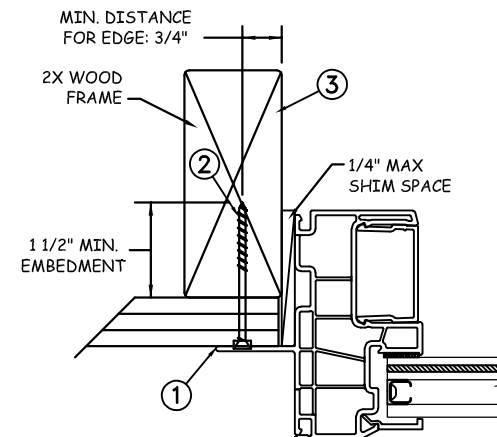


NAIL FIN INSTALLATION



JAMB SECTION (TYP)
HORIZONTAL SECTION

NOTE: Caulk between Nailing Flange & Wood Opening.

| Max Frame | DP RATING | IMPACT |
|-----------|-----------|--------|
| 72 x 72 | +50/-55 | YES |

WIND ZONE 3

Installation Notes:

1. Seal flange/frame to substrate. Sill shall be set on a continuous serpentine bead of structural grade silicone caulk when no fastener is used to anchor the sill (typical).
2. Use #8 PH or greater fastener through the nail fin with sufficient length to penetrate a minimum of 1 1/2" into the wood framing. For 2X wood frame substrate (min. S.G. = 0.42).
3. Host structure (wood buck, masonry, steel) to be designed and anchored to properly transfer all loads to the structure. The host structure is the responsibility of the architect or engineer of record for the project of installation.

This schedule addresses only the fasteners required to anchor the window to achieve the rated design pressure up to the size limitations noted. It is not intended as a guide to the installation process and does not address the sealing consideration that may arise in different wall conditions. For the complete installation procedure, see the instructions packaged with the window or go to www.jeld-wen.com.

DISCLAIMER:

This drawing and its contents are confidential and are not to be reproduced or copied in whole or in part or used or disclosed to others except as authorized by JELD-WEN Inc.

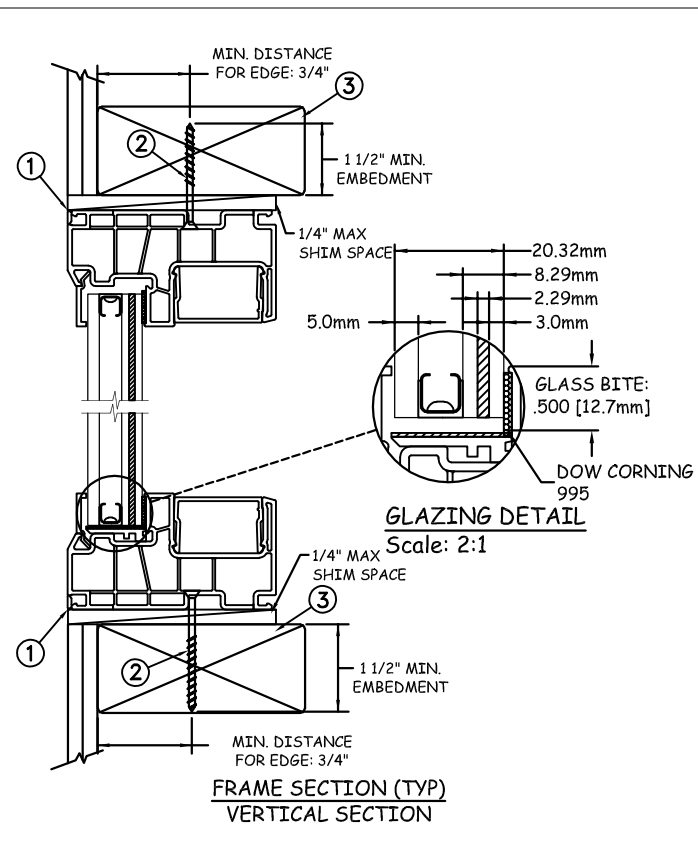
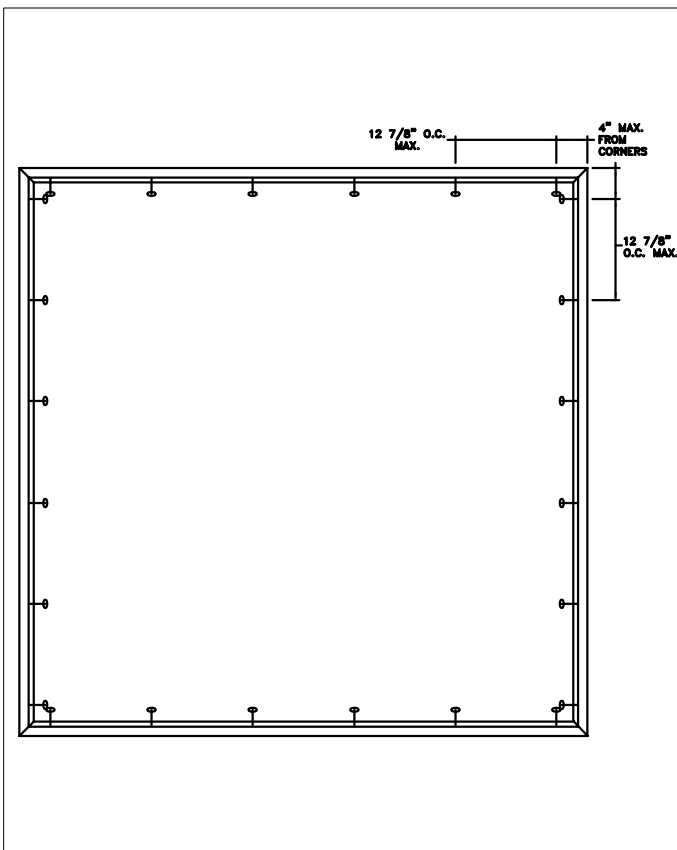
General Notes:

1. The product shown herein is designed, tested and manufactured to comply with the wind load criteria of the adopted International Building Code(IBC), the International Residential Code(IRC), the Texas Revisions and the industry requirement for the stated conditions.
2. All glazing shall conform to ASTM E1300.
3. At minimum, glazing shall be 5.0mm annealed - 7.09mm airspace - 3.0mm annealed - 2.29mm SGP Interlayer by Kurraray - 3.0mm annealed insulating glass.
4. Use structural or composite shims where required.

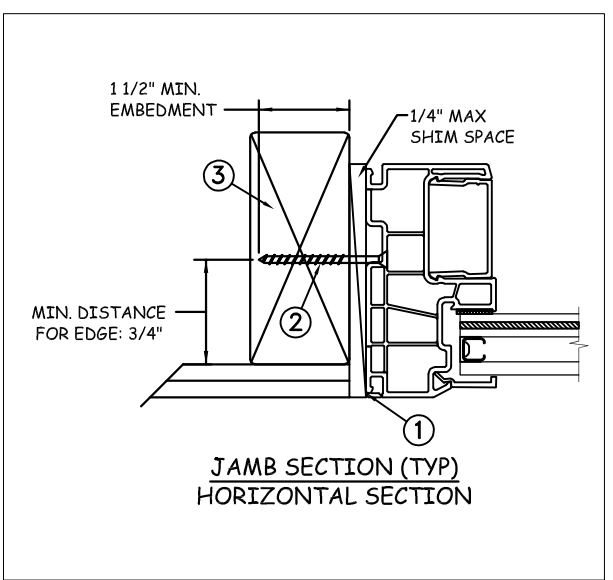


Hermes F. Norero, P.E.
398 East Dania Beach Blvd, Suite 338
Dania Beach, FL 33004

| | | | | | |
|----------------------------|--|--|--|--|---------------------|
| PROJECT ENGINEER: -- | | DATE: 7/12/18 | | <div>JELD-WEN</div> <div>3737 Lakeport Blvd Klamath Falls, OR. 97601 Phone: (800) 535-3936</div> | |
| DRAWN BY: A. MCMILLAN | | SCALE: NTS | | | |
| CHECKED BY: J. GOOSSEN | | TITLE: Premium Vinyl Fixed Track Filler Impact Window - WZ3 | | | |
| APPROVED BY: J. GOOSSEN | | | | | |
| RECORD No.: D014558 | | | | | |
| REPORT No.: 110-17-030 | | PLANT NAME AND LOCATION: | | CAD DWG. No.: | REV: A SHEET 1 OF 4 |



THROUGH FRAME INSTALLATION



| Max Frame | DP RATING | IMPACT |
|-----------|-----------|--------|
| 72 x 72 | +50/-55 | YES |

WIND ZONE 3

Installation Notes:

1. Seal flange/frame to substrate. Sill shall be set on a continuous serpentine bead of structural grade silicone caulk when no fastener is used to anchor the sill (typical).
2. Use #8 PH or greater fastener through the frame with sufficient length to penetrate a minimum of 1 1/2" into the wood framing. For 2X wood frame substrate (min. S.G. = 0.42).
3. Host structure (wood buck, masonry, steel) to be designed and anchored to properly transfer all loads to the structure. The host structure is the responsibility of the architect or engineer of record for the project of installation.

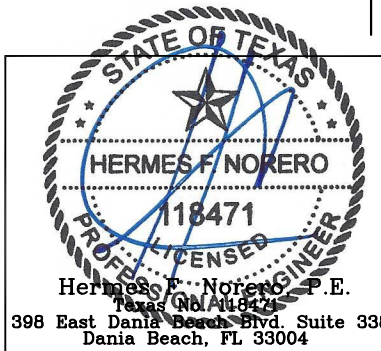
This schedule addresses only the fasteners required to anchor the window to achieve the rated design pressure up to the size limitations noted. It is not intended as a guide to the installation process and does not address the sealing consideration that may arise in different wall conditions. For the complete installation procedure, see the instructions packaged with the window or go to www.jeld-wen.com.

DISCLAIMER:

This drawing and its contents are confidential and are not to be reproduced or copied in whole or in part or used or disclosed to others except as authorized by JELD-WEN Inc.

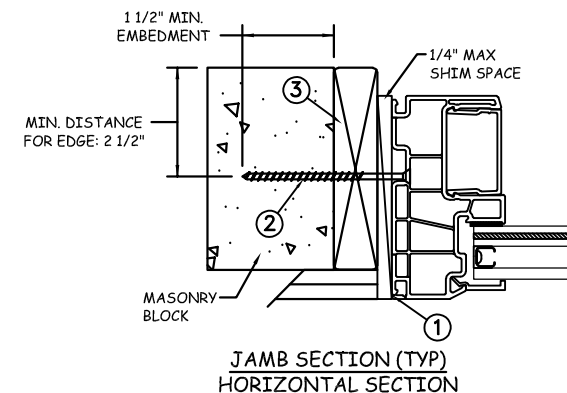
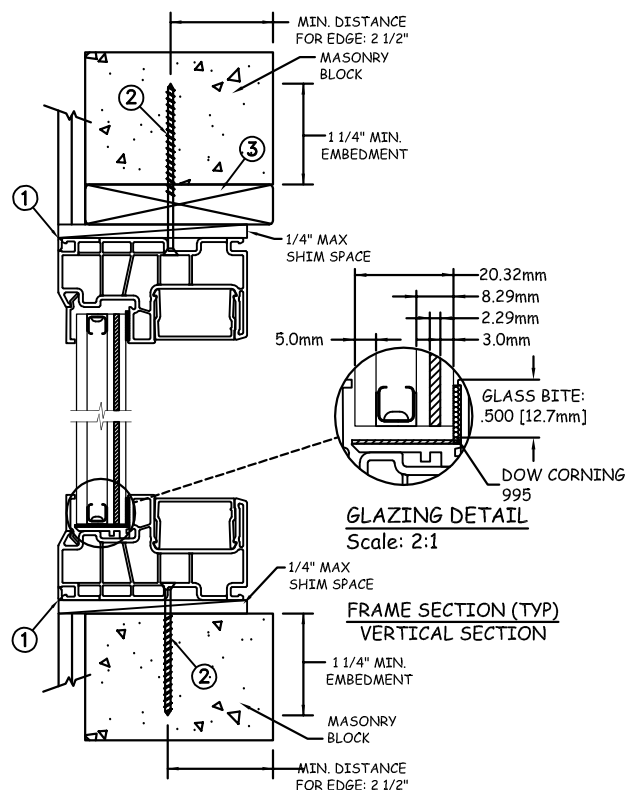
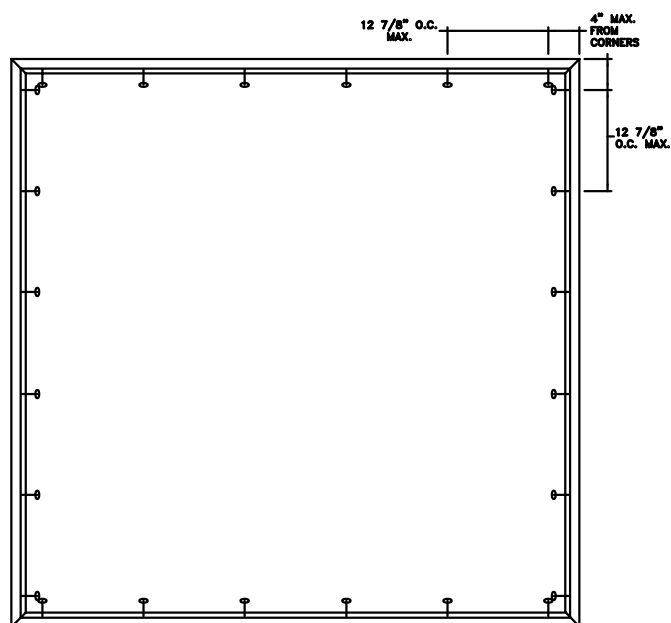
General Notes:

1. The product shown herein is designed, tested and manufactured to comply with the wind load criteria of the adopted International Building Code(IBC), the International Residential Code(IRC), the Texas Revisions and the industry requirement for the stated conditions.
2. All glazing shall conform to ASTM E1300.
3. At minimum, glazing shall be 5.0mm annealed - 7.09mm airspace - 3.0mm annealed - 2.29mm SGP Interlayer by Kurraray - 3.0mm annealed insulating glass.
4. Use structural or composite shims where required.



| | | | | | |
|----------------------------|--|--|-----------|-----------------|--|
| PROJECT ENGINEER: -- | DATE: 7/12/18 | <div>JELD-WEN</div> <div>3737 Lakeport Blvd Klamath Falls, OR. 97601 Phone: (800) 535-3936</div> | | | |
| DRAWN BY: A. MCMILLAN | SCALE: NTS | | | | |
| CHECKED BY: J. GOOSSEN | TITLE: Premium Vinyl Fixed Track Filler Impact Window - WZ3 | | | | |
| APPROVED BY: J. GOOSSEN | | | | | |
| RECORD No.: D014558 | | | | | |
| REPORT No.: 110-17-030 | PLANT NAME AND LOCATION: | CAD DWG. No.: | REV: A | SHEET 2 OF 4 | |

MASONRY INSTALLATION



| Max Frame | DP RATING | IMPACT |
|-----------|-----------|--------|
| 72 x 72 | +50/-55 | YES |

WIND ZONE 3

Installation Notes:

1. Seal flange/frame to substrate. Sill shall be set on a continuous serpentine bead of structural grade silicone caulk when no fastener is used to anchor the sill (typical).
2. Use 3/16" Tapcon or equivalent fasteners through frame with sufficient length to penetrate a minimum of 1 1/4" into concrete or masonry at each location with a 2 1/2" min from edge distance. For concrete (min. = 3000psi) or masonry (min. = 2000psi) (CMU shall conform to ASTM C90).
3. Host structure (wood buck, masonry, steel) to be designed and anchored to properly transfer all loads to the structure. The host structure is the responsibility of the architect or engineer of record for the project of installation.

This schedule addresses only the fasteners required to anchor the window to achieve the rated design pressure up to the size limitations noted. It is not intended as a guide to the installation process and does not address the sealing consideration that may arise in different wall conditions. For the complete installation procedure, see the instructions packaged with the window or go to www.jeld-wen.com.

DISCLAIMER:

This drawing and its contents are confidential and are not to be reproduced or copied in whole or in part or used or disclosed to others except as authorized by JELD-WEN Inc.

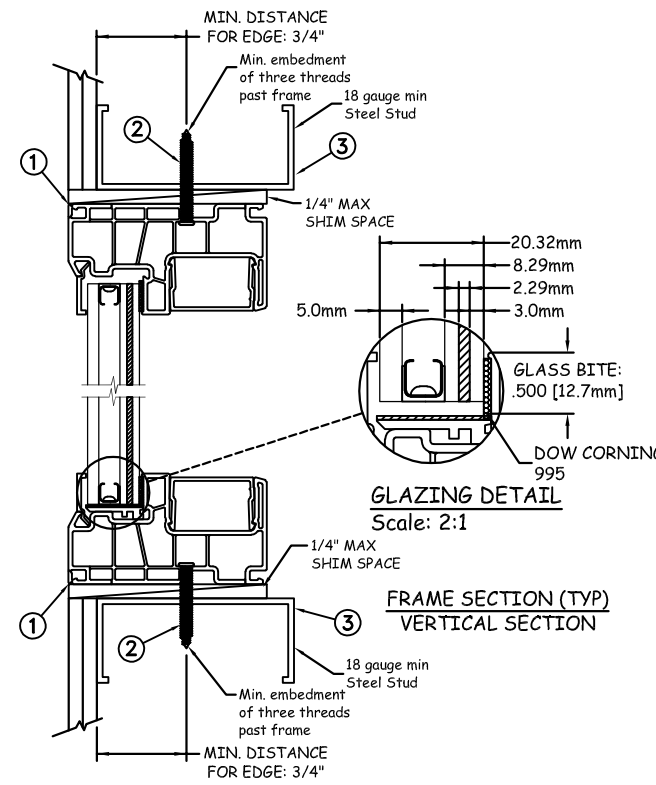
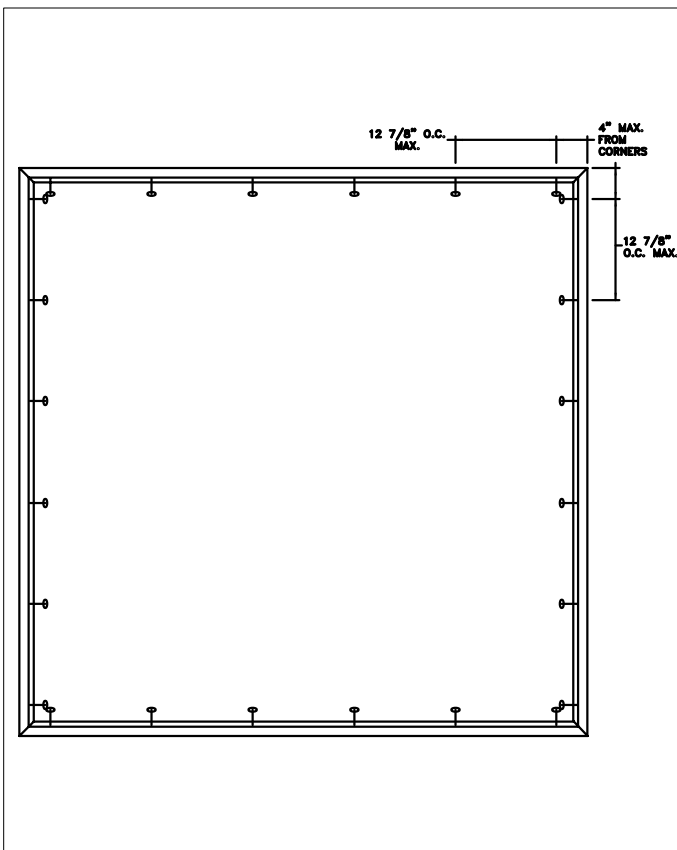
General Notes:

1. The product shown herein is designed, tested and manufactured to comply with the wind load criteria of the adopted International Building Code(IBC), the International Residential Code(IRC), the Texas Revisions and the industry requirement for the stated conditions.
2. All glazing shall conform to ASTM E1300.
3. At minimum, glazing shall be 5.0mm annealed - 7.09mm airspace - 3.0mm annealed - 2.29mm SGP Interlayer by Kurraray - 3.0mm annealed insulating glass.
4. Use structural or composite shims where required.

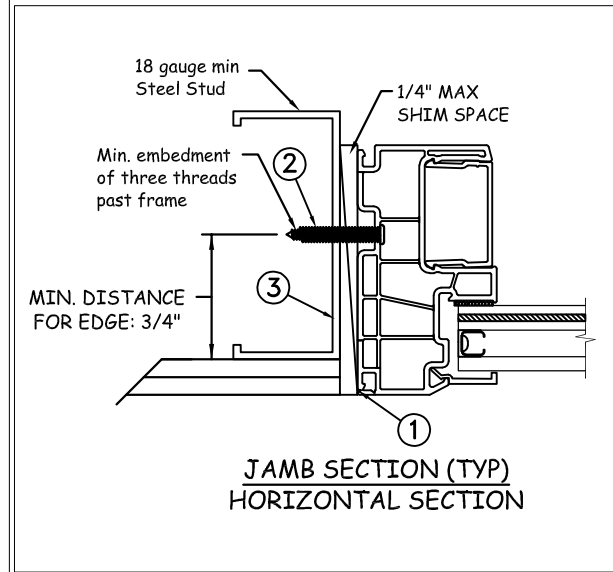


Hermes F. Norero, P.E.
398 East Dania Beach Blvd. Suite 338
Dania Beach, FL 33004

| | | | | | |
|----------------------------|--|--|--|--|---------------------|
| PROJECT ENGINEER: -- | | DATE: 7/12/18 | | <div>JELD-WEN</div> <div>3737 Lakeport Blvd Klamath Falls, OR. 97601 Phone: (800) 535-3936</div> | |
| DRAWN BY: A. MCMILLAN | | SCALE: NTS | | | |
| CHECKED BY: J. GOOSSEN | | TITLE: Premium Vinyl Fixed Track Filler Impact Window - WZ3 | | | |
| APPROVED BY: J. GOOSSEN | | | | | |
| RECORD No.: D014558 | | | | | |
| REPORT No.: 110-17-030 | | PLANT NAME AND LOCATION: | | CAD DWG. No.: | REV: A SHEET 3 OF 4 |



STEEL INSTALLATION



| Max Frame | DP RATING | IMPACT |
|-----------|-----------|--------|
| 72 x 72 | +50/-55 | YES |

WIND ZONE 3

Installation Notes:

1. Seal flange/frame to substrate. Sill shall be set on a continuous serpentine bead of structural grade silicone caulk when no fastener is used to anchor the sill (typical).
2. For anchoring into metal framing, use #8 TEK Self Tapping screws with sufficient length to achieve a minimum penetration of three threads past the frame thickness. Locate anchors as shown in elevations and installation details. Steel substrate min. 18ga., fy = 33 ksi.
3. Host structure (wood buck, masonry, steel) to be designed and anchored to properly transfer all loads to the structure. The host structure is the responsibility of the architect or engineer of record for the project of installation.

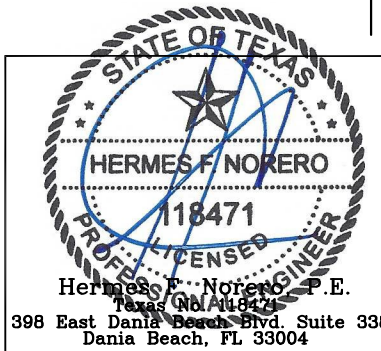
This schedule addresses only the fasteners required to anchor the window to achieve the rated design pressure up to the size limitations noted. It is not intended as a guide to the installation process and does not address the sealing consideration that may arise in different wall conditions. For the complete installation procedure, see the instructions packaged with the window or go to www.jeld-wen.com.


DISCLAIMER:

This drawing and its contents are confidential and are not to be reproduced or copied in whole or in part or used or disclosed to others except as authorized by JELD-WEN Inc.

General Notes:

1. The product shown herein is designed, tested and manufactured to comply with the wind load criteria of the adopted International Building Code(IBC), the International Residential Code(IRC), the Texas Revisions and the industry requirement for the stated conditions.
2. All glazing shall conform to ASTM E1300.
3. At minimum, glazing shall be 5.0mm annealed - 7.09mm airspace - 3.0mm annealed - 2.29mm SGP Interlayer by Kurraray - 3.0mm annealed insulating glass.
4. Use structural or composite shims where required.



| | | | | |
|----------------------------|--|--|-----------|-----------------|
| PROJECT ENGINEER: --- | DATE: 7/12/18 |  <div>3737 Lakeport Blvd Klamath Falls, OR. 97601 Phone: (800) 535-3936</div> | | |
| DRAWN BY: A. MCMILLAN | SCALE: NTS | | | |
| CHECKED BY: J. GOOSSEN | TITLE: Premium Vinyl Fixed Track Filler Impact Window - WZ3 | | | |
| APPROVED BY: J. GOOSSEN | | | | |
| RECORD No.: D014558 | | | | |
| REPORT No.: 110-17-030 | PLANT NAME AND LOCATION: | CAD DWG. No.: | REV: A | SHEET 4 OF 4 |