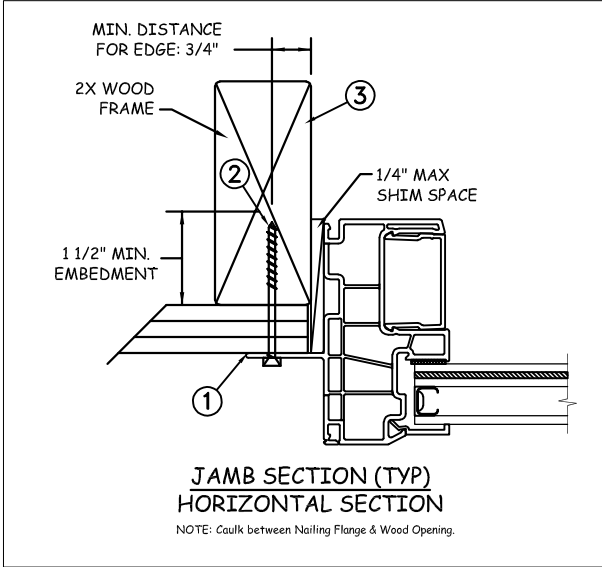


NAIL FIN INSTALLATION



Max Frame	DP RATING	IMPACT
108 x 72	+50/-55	YES
WIND ZONE 3		

Installation Notes:

1. Seal flange/frame to substrate.
2. Use #8 PH or greater fastener through the nail fin with sufficient length to penetrate a minimum of 1 1/2" into the wood framing. For 2X wood frame substrate (min. S.G. = 0.42).
3. Host structure (wood buck, masonry, steel) to be designed and anchored to properly transfer all loads to the structure. The host structure is the responsibility of the architect or engineer of record for the project of installation.

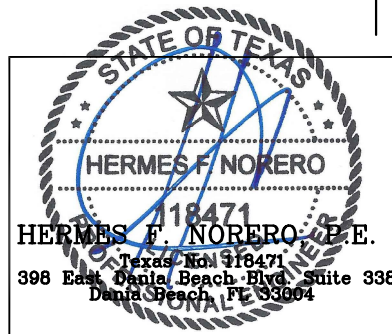
General Notes:

1. The product shown herein is designed, tested and manufactured to comply with the wind load criteria of the adopted International Building Code(IBC), the International Residential Code(IRC), the Texas Revisions excluding HVHZ and the industry requirement for the stated conditions.
2. All glazing shall conform to ASTM E1300.
3. At minimum, glazing shall be 3.0mm annealed - 11.05mm airspace - 3.0mm annealed - 2.29mm PVB Interlayer by Kurraray - 3.0mm annealed insulated glass.
4. Use structural or composite shims where required.

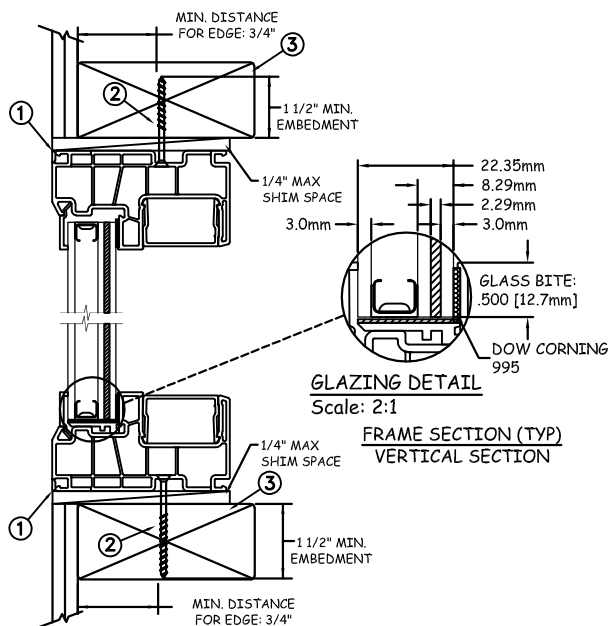
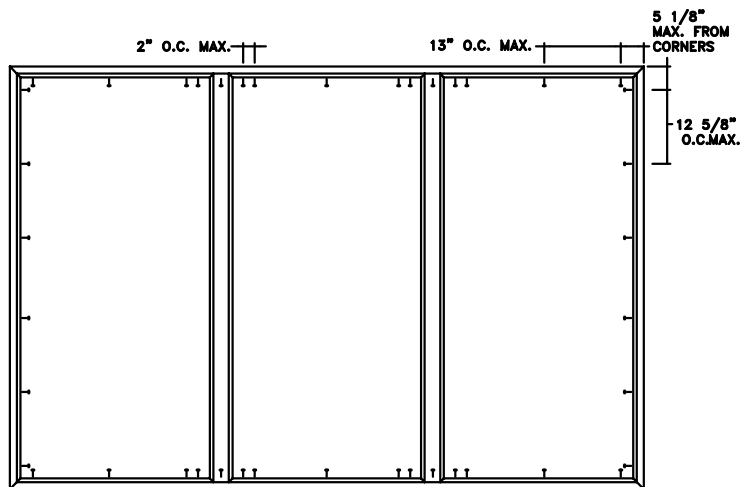
This schedule addresses only the fasteners required to anchor the window to achieve the rated design pressure up to the size limitations noted. It is not intended as a guide to the installation process and does not address the sealing consideration that may arise in different wall conditions. For the complete installation procedure, see the instructions packaged with the window or go to www.jeld-wen.com.

DISCLAIMER:

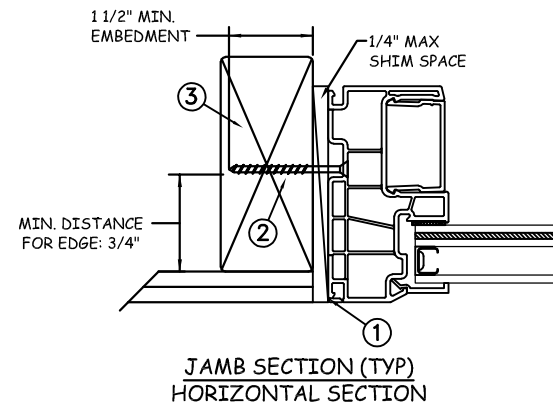
This drawing and its contents are confidential and are not to be reproduced or copied in whole or in part or used or disclosed to others except as authorized by JELD-WEN Inc.



PROJECT ENGINEER: --	DATE: 01/29/18	JELD-WEN		3737 Lakeport Blvd	
DRAWN BY: A. MCMILLAN	SCALE: NTS			Klamath Falls, OR. 97601 Phone: (800) 535-3936	
CHECKED BY: J. GOOSSEN	TITLE: Premium Vinyl Fixed Track Filler Impact Window 000 - WZ3				
APPROVED BY: J. GOOSSEN					
PART/PROJECT No.: D014608					
IDENTIFIER No. 110-17-024	PLANT NAME AND LOCATION:	CAD DWG. No.: PremVinylFixPFMull Cert	REV: A	SHEET 1 OF 4	



THROUGH FRAME INSTALLATION



Max Frame	DP RATING	IMPACT
108 x 72	+50/-55	YES
WIND ZONE 3		

Installation Notes:

1. Seal flange/frame to substrate.
2. Use #14 PH or greater fastener through the nail fin with sufficient length to penetrate a minimum of 1 1/2" into the wood framing. For 2X wood frame substrate (min. S.G. = 0.42).
3. Host structure (wood buck, masonry, steel) to be designed and anchored to properly transfer all loads to the structure. The host structure is the responsibility of the architect or engineer of record for the project of installation.

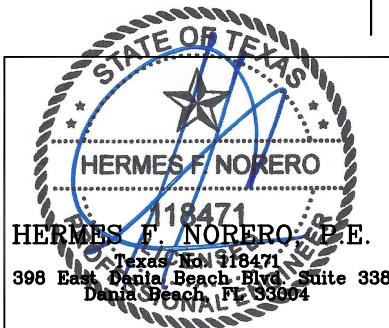
General Notes:

1. The product shown herein is designed, tested and manufactured to comply with the wind load criteria of the adopted International Building Code(IBC), the International Residential Code(IRC), the Texas Revisions excluding HVHZ and the industry requirement for the stated conditions.
2. All glazing shall conform to ASTM E1300.
3. At minimum, glazing shall be 3.0mm annealed - 11.05mm airspace - 3.0mm annealed - 2.29mm PVB Interlayer by Kurraray - 3.0mm annealed insulated glass.
4. Use structural or composite shims where required.

This schedule addresses only the fasteners required to anchor the window to achieve the rated design pressure up to the size limitations noted. It is not intended as a guide to the installation process and does not address the sealing consideration that may arise in different wall conditions. For the complete installation procedure, see the instructions packaged with the window or go to www.jeld-wen.com.

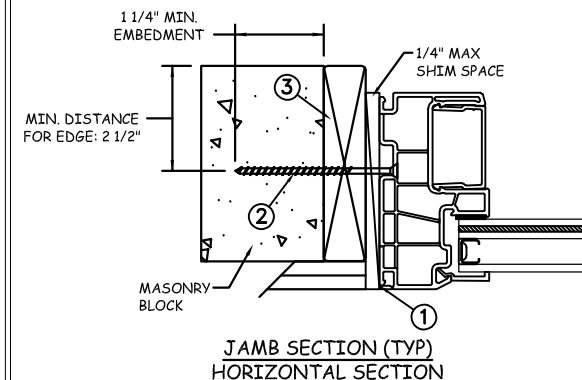
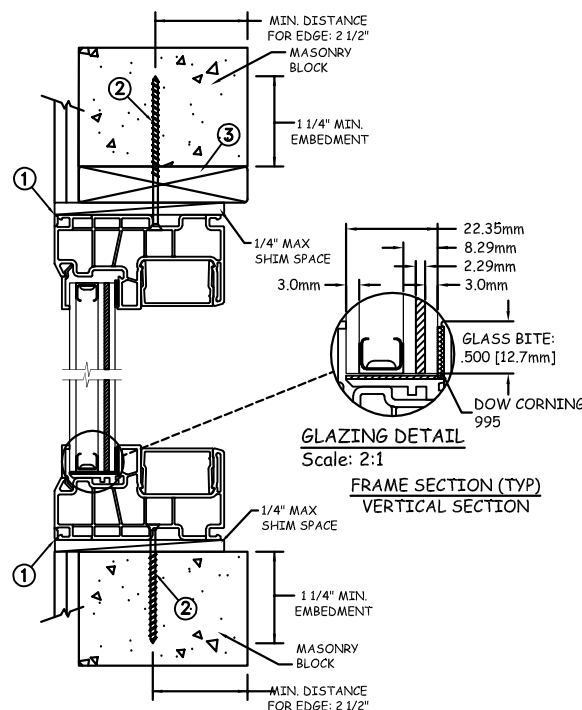
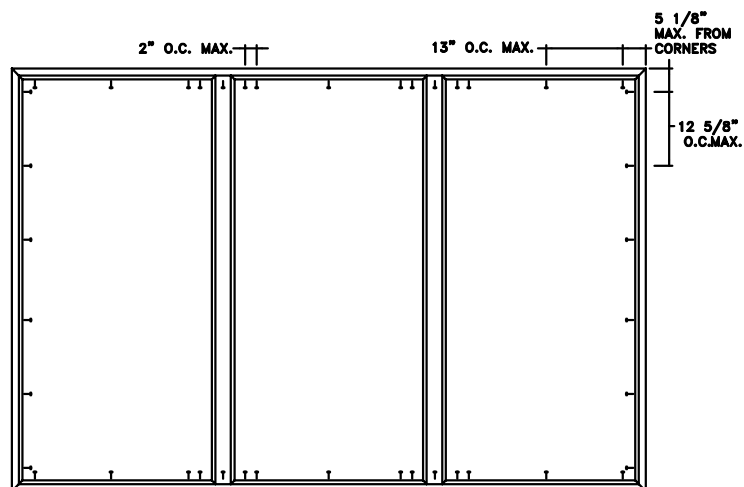
DISCLAIMER:

This drawing and its contents are confidential and are not to be reproduced or copied in whole or in part or used or disclosed to others except as authorized by JELD-WEN Inc.



PROJECT ENGINEER: --	DATE: 01/29/18	<div>JELD-WEN</div> <div>3737 Lakeport Blvd Klamath Falls, OR. 97601 Phone: (800) 535-3936</div>				
DRAWN BY: A. MCMILLAN	SCALE: NTS					
CHECKED BY: J. GOOSSEN	TITLE: Premium Vinyl Fixed Track Filler Impact Window 000 - WZ3					
APPROVED BY: J. GOOSSEN						
PART/PROJECT No.: D014608						
IDENTIFIER No. 110-17-024	PLANT NAME AND LOCATION:		CAD DWG. No.: PremVinylFixPFMull Cert	REV: A	SHEET 2 OF 4	

MASONRY INSTALLATION



Max Frame	DP RATING	IMPACT
108 x 72	+50/-55	YES

WIND ZONE 3

Installation Notes:

1. Seal flange/frame to substrate.
2. Use 3/16" Elco Tapcon or equivalent fasteners through frame with sufficient length to penetrate a minimum of 1 1/4" into concrete or masonry at each location with a 2 1/2" min from edge distance. For concrete (min. = 3000psi) or masonry (min. = 2000psi) (CMU shall conform to ASTM C90).
3. Host structure (wood buck, masonry, steel) to be designed and anchored to properly transfer all loads to the structure. The host structure is the responsibility of the architect or engineer of record for the project of installation.

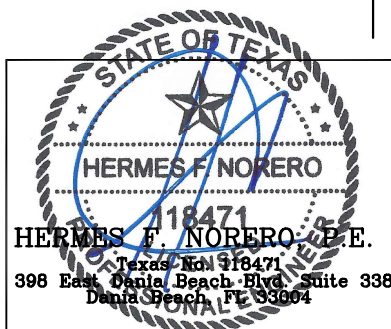
General Notes:

1. The product shown herein is designed, tested and manufactured to comply with the wind load criteria of the adopted International Building Code(IBC), the International Residential Code(IRC), the Texas Revisions excluding HVHZ and the industry requirement for the stated conditions.
2. All glazing shall conform to ASTM E1300.
3. At minimum, glazing shall be 3.0mm annealed - 11.05mm airspace - 3.0mm annealed - 2.29mm PVB Interlayer by Kurraray - 3.0mm annealed insulated glass.
4. Use structural or composite shims where required.

This schedule addresses only the fasteners required to anchor the window to achieve the rated design pressure up to the size limitations noted. It is not intended as a guide to the installation process and does not address the sealing consideration that may arise in different wall conditions. For the complete installation procedure, see the instructions packaged with the window or go to www.jeld-wen.com.

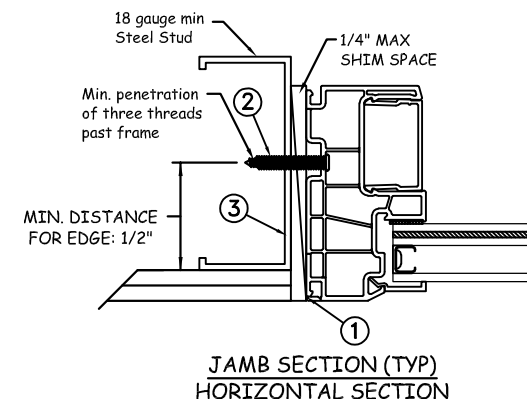
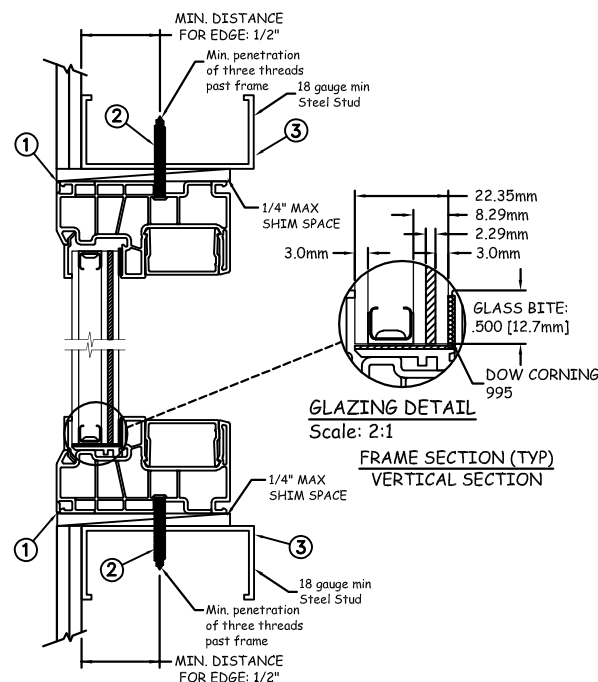
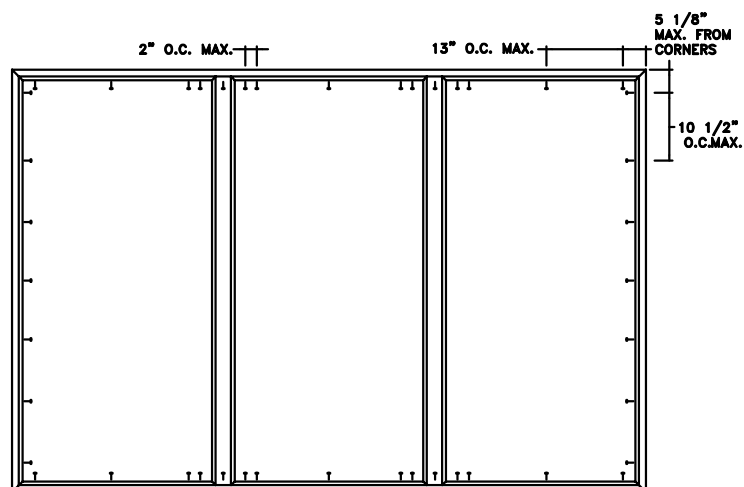
DISCLAIMER:

This drawing and its contents are confidential and are not to be reproduced or copied in whole or in part or used or disclosed to others except as authorized by JELD-WEN Inc.



PROJECT ENGINEER: --		DATE: 01/29/18		<div>JELD-WEN</div> <div>3737 Lakeport Blvd Klamath Falls, OR. 97601 Phone: (800) 535-3936</div>	
DRAWN BY: A. MCMILLAN		SCALE: NTS			
CHECKED BY: J. GOOSSEN		TITLE: Premium Vinyl Fixed Track Filler Impact Window 000 - WZ3			
APPROVED BY: J. GOOSSEN					
PART/PROJECT No.: D014608					
IDENTIFIER No. 110-17-024		PLANT NAME AND LOCATION:		CAD DWG. No.: PremVinylFixPFMull Cert	REV: A SHEET 3 OF 4

STEEL INSTALLATION



Max Frame	DP RATING	IMPACT
108 x 72	+50/-55	YES

WIND ZONE 3

Installation Notes:

1. Seal flange/frame to substrate.
2. For anchoring into metal framing, use #10 TEK Self Tapping screws with sufficient length to achieve a minimum penetration of three threads past the frame thickness. Locate anchors as shown in elevations and installation details. Steel substrate min. 18ga., fy = 33 ksi.
3. Host structure (wood buck, masonry, steel) to be designed and anchored to properly transfer all loads to the structure. The host structure is the responsibility of the architect or engineer of record for the project of installation.

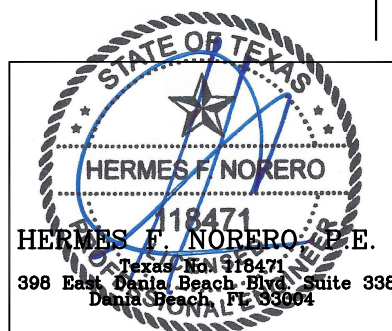
General Notes:

1. The product shown herein is designed, tested and manufactured to comply with the wind load criteria of the adopted International Building Code(IBC), the International Residential Code(IRC), the Texas Revisions excluding HVHZ and the industry requirement for the stated conditions.
2. All glazing shall conform to ASTM E1300.
3. At minimum, glazing shall be 3.0mm annealed - 11.05mm airspace - 3.0mm annealed - 2.29mm PVB Interlayer by Kurraray - 3.0mm annealed insulated glass.
4. Use structural or composite shims where required.

This schedule addresses only the fasteners required to anchor the window to achieve the rated design pressure up to the size limitations noted. It is not intended as a guide to the installation process and does not address the sealing consideration that may arise in different wall conditions. For the complete installation procedure, see the instructions packaged with the window or go to www.jeld-wen.com.

DISCLAIMER:

This drawing and its contents are confidential and are not to be reproduced or copied in whole or in part or used or disclosed to others except as authorized by JELD-WEN Inc.



PROJECT ENGINEER: --		DATE: 01/29/18	<div>JELD-WEN</div> <div>3737 Lakeport Blvd Klamath Falls, OR. 97601 Phone: (800) 535-3936</div>		
DRAWN BY: A. MCMILLAN		SCALE: NTS			
CHECKED BY: J. GOOSSEN		TITLE: Premium Vinyl Fixed Track Filler Impact Window 000 - WZ3			
APPROVED BY: J. GOOSSEN					
PART/PROJECT No.: D014608					
IDENTIFIER No. 110-17-024		PLANT NAME AND LOCATION:	CAD DWG. No.: PremVinylFixPFMull Cert	REV: A	SHEET 4 OF 4