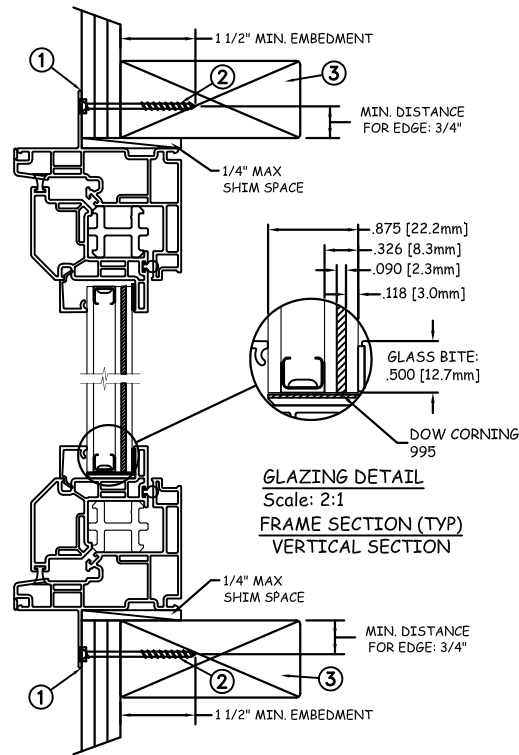
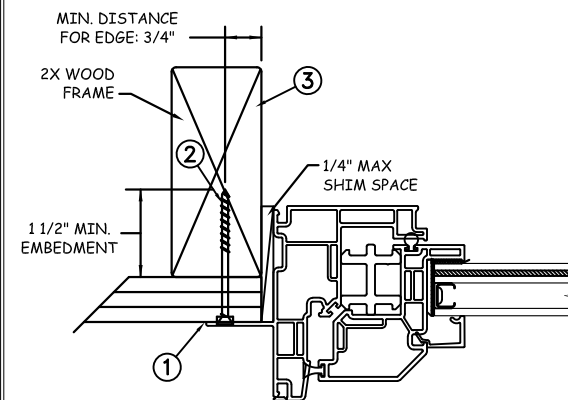


TYPICAL ELEVATION WITH FASTENER SPACING



NAIL FIN INSTALLATION



JAMB SECTION (TYP)
HORIZONTAL SECTION

Max Frame	DP RATING	IMPACT
36 x 72	+50/-55	YES

MISSILE LEVEL D - WZ3

Installation Notes:

1. Seal flange/frame to substrate. Sill shall be set on a continuous serpentine bead of structural grade silicone caulk when no fastener is used to anchor the sill (typical).
2. Use #8 PH or greater fastener through the nail fin with sufficient length to penetrate a minimum of 1 1/2" into the wood framing. For 2X wood frame substrate (min. S.G. = 0.42).
3. Host structure (wood buck, masonry, steel) to be designed and anchored to properly transfer all loads to the structure. The host structure is the responsibility of the architect or engineer of record for the project of installation.

General Notes:

1. The product shown herein is designed, tested and manufactured to comply with the wind load criteria of the 2018 International Residential Code (IRC), the 2018 International Building Code (IBC).
2. All glazing shall conform to ASTM E1300.
3. At minimum, glazing shall be 3.2mm annealed - 10.8mm airspace - 3.0mm annealed - 2.3mm PVB Interlayer by Kuraray - 3.0mm annealed insulating glass.
4. Use structural or composite shims where required.

This schedule addresses only the fasteners required to anchor the window to achieve the rated design pressure up to the size limitations noted. It is not intended as a guide to the installation process and does not address the sealing consideration that may arise in different wall conditions. For the complete installation procedure, see the instructions packaged with the window or go to www.jeld-wen.com.

DISCLAIMER:

This drawing and its contents are confidential and are not to be reproduced or copied in whole or in part or used or disclosed to others except as authorized by JELD-WEN Inc.



Joseph A. Reed

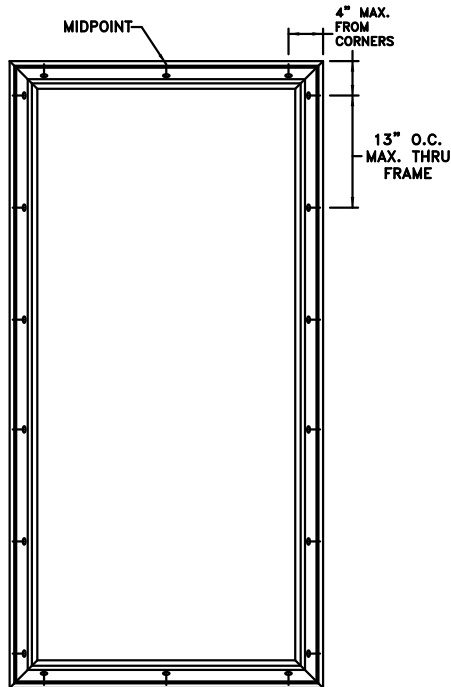
2021.05.13 13:56:39 -04'00'

JOSEPH A. REED, P.E.

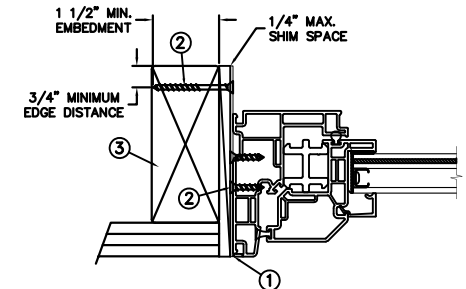
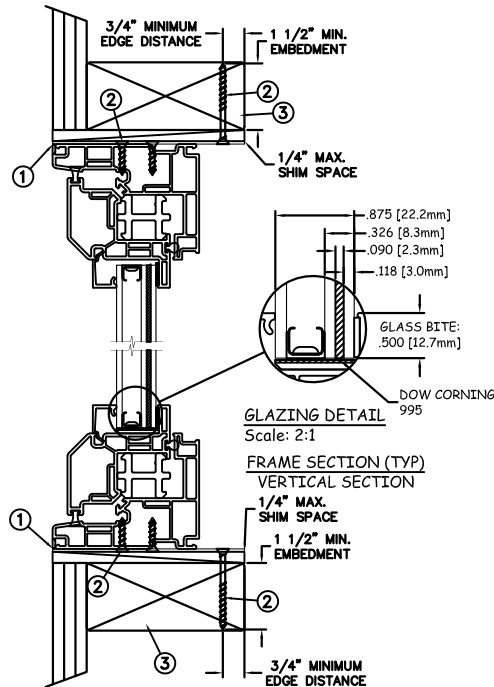
Texas No. 100777
5 LEIGH DRIVE
YORK, PA. 17406
(717) 846-1200

	DATE: 05/07/2021	JELD-WEN	3737 Lakeport Blvd	
DRAWN BY: M.HAM	SCALE: NTS		Klamath Falls, OR. 97601 Phone: (800) 535-3936	
CHECKED BY: J.GOOSSEN	TITLE: Premium Vinyl Stationary Casement Window - Impact			
APPROVED BY: J.GOOSSEN				
RECORD No.: D014556				
REPORT No.: 110-17-006	CAD DWG. No.: PremVinylFixedCsmt Cert		REV: A	SHEET 1 OF 4

MASONRY STRAP WOOD INSTALLATION



TYPICAL ELEVATION WITH FASTENER SPACING



JAMB SECTION (TYP)
HORIZONTAL SECTION

Max Frame	DP RATING	IMPACT
36 x 72	+50/-55	YES

MISSILE LEVEL D - WZ3

Installation Notes:

1. Seal flange/frame to substrate. Sill shall be set on a continuous serpentine bead of structural grade silicone caulk when no fastener is used to anchor the sill (typical).
2. Install masonry straps to vinyl frame using (4) #8 x 1/2" PH corrosion resistant fasteners. Secure straps to buck with (2) #8 fastener thru masonry strap into wood buck. Fasteners must be long enough to penetrate at least 1 1/2" into framing members. For 2X wood frame substrate (min. S.G. = 0.42)
3. Host structure (wood buck, masonry, steel) to be designed and anchored to properly transfer all loads to the structure. The host structure is the responsibility of the architect or engineer of record for the project of installation.

General Notes:

1. The product shown herein is designed, tested and manufactured to comply with the wind load criteria of the 2018 International Residential Code (IRC), the 2018 International Building Code (IBC).
2. All glazing shall conform to ASTM E1300.
3. At minimum, glazing shall be 3.2mm annealed - 10.8mm airspace - 3.0mm annealed - 2.3mm PVB Interlayer by Kuraray - 3.0mm annealed insulating glass.
4. Use structural or composite shims where required.

This schedule addresses only the fasteners required to anchor the window to achieve the rated design pressure up to the size limitations noted. It is not intended as a guide to the installation process and does not address the sealing consideration that may arise in different wall conditions. For the complete installation procedure, see the instructions packaged with the window or go to www.jeld-wen.com.

DISCLAIMER:

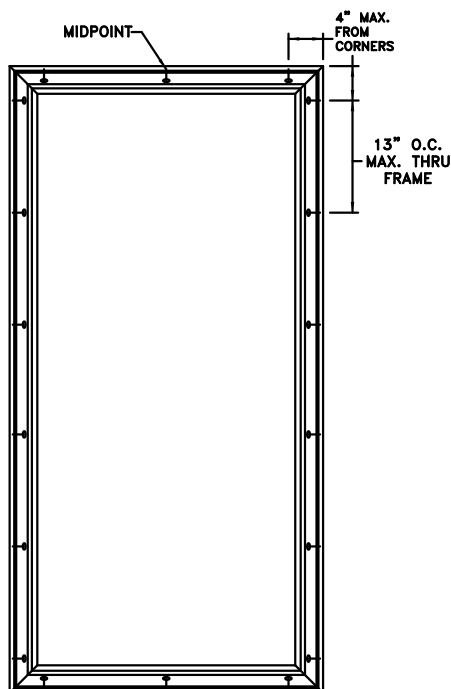
This drawing and its contents are confidential and are not to be reproduced or copied in whole or in part or used or disclosed to others except as authorized by JELD-WEN Inc.



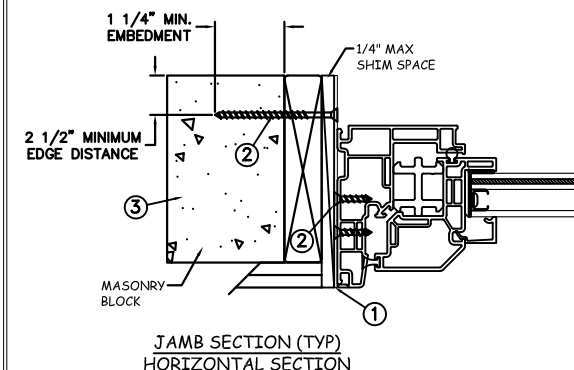
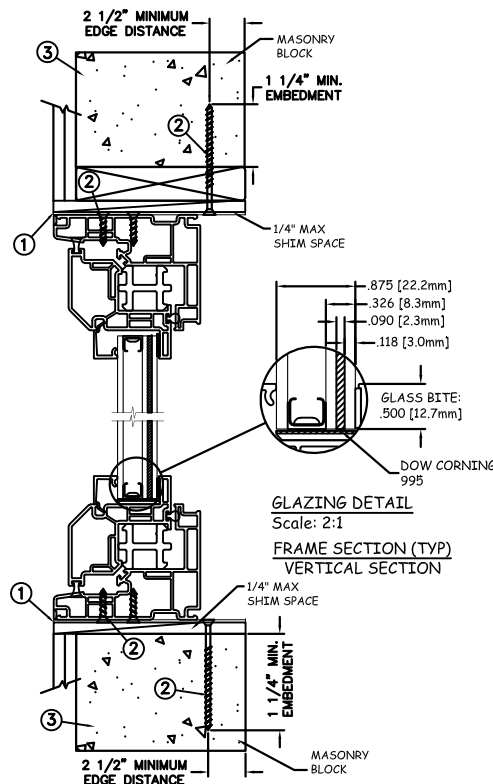
2021.05.13 13:56:39 -0400
JOSEPH A. REED, P.E.
Texas No. 100777
5 LEIGH DRIVE
YORK, PA. 17406
(717) 846-1200

	DATE: 05/07/2021	JELD-WEN 3737 Lakeport Blvd Klamath Falls, OR. 97601 Phone: (800) 535-3936
DRAWN BY: M.HAM	SCALE: NTS	
CHECKED BY: J.GOOSEN	TITLE: Premium Vinyl Stationary Casement Window - Impact	
APPROVED BY: J.GOOSEN		
RECORD No.: D014556		
REPORT No.: 110-17-006	CAD DWG. No.: PremVinylFixedCsmCert	REV: A
		SHEET 2 OF 4

MASONRY STRAP CONCRETE INSTALLATION



TYPICAL ELEVATION WITH FASTENER SPACING



Max Frame	DP RATING	IMPACT
36 x 72	+50/-55	YES
MISSILE LEVEL D - WZ3		

Installation Notes:

1. Seal flange/frame to substrate. Sill shall be set on a continuous serpentine bead of structural grade silicone caulk when no fastener is used to anchor the sill (typical).
2. Install masonry straps to vinyl frame using (4) #8 x 1/2" PH corrosion resistant fasteners. Secure straps with (2) 3/16" Tapcon fastener through masonry strap into concrete or masonry. Fasteners must be long enough to penetrate at least 1 1/2" into concrete or masonry with min edge distance of 2 1/2". For concrete (min. = 3000psi) or masonry (min. = 2000psi) (CMU shall conform to ASTM C90).
3. Host structure (wood buck, masonry, steel) to be designed and anchored to properly transfer all loads to the structure. The host structure is the responsibility of the architect or engineer of record for the project of installation.

General Notes:

1. The product shown herein is designed, tested and manufactured to comply with the wind load criteria of the 2018 International Residential Code (IRC), the 2018 International Building Code (IBC).
2. All glazing shall conform to ASTM E1300.
3. At minimum, glazing shall be 3.2mm annealed - 10.8mm airspace - 3.0mm annealed - 2.3mm PVB Interlayer by Kuraray - 3.0mm annealed insulating glass.
4. Use structural or composite shims where required.

This schedule addresses only the fasteners required to anchor the window to achieve the rated design pressure up to the size limitations noted. It is not intended as a guide to the installation process and does not address the sealing consideration that may arise in different wall conditions. For the complete installation procedure, see the instructions packaged with the window or go to www.jeld-wen.com.

DISCLAIMER:

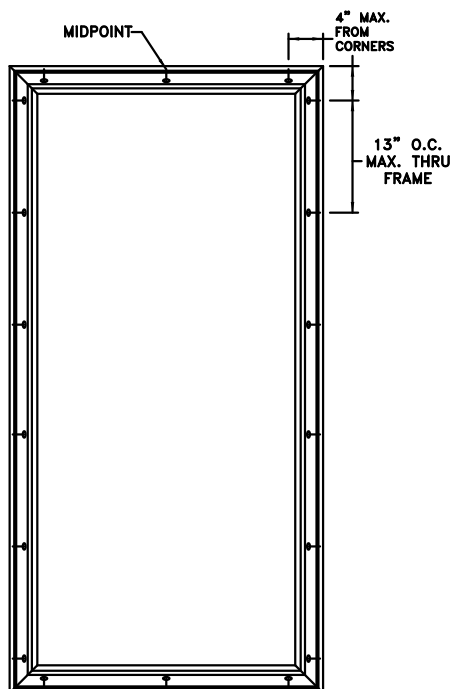
This drawing and its contents are confidential and are not to be reproduced or copied in whole or in part or used or disclosed to others except as authorized by JELD-WEN Inc.



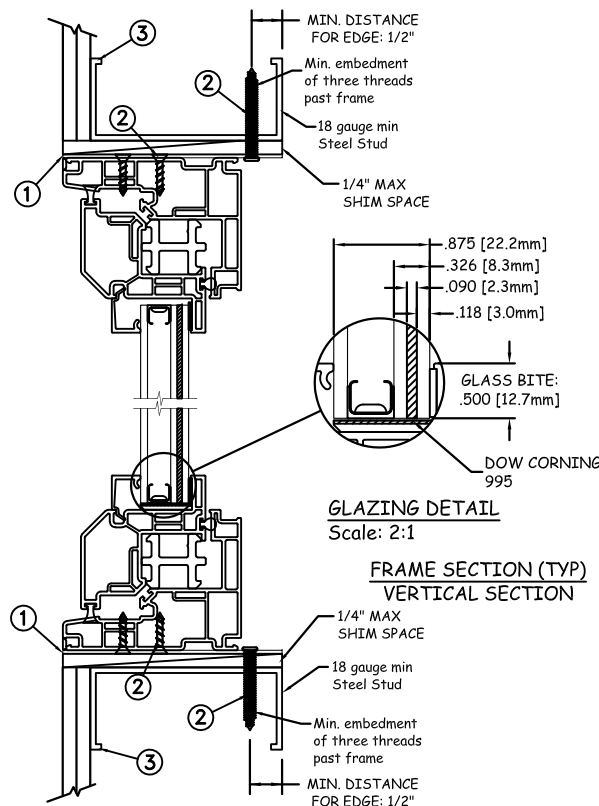
2021.05.13 13:56:39 -04'00'
JOSEPH A. REED, P.E.
Texas No. 100777
5 LEIGH DRIVE
YORK, PA. 17406
(717) 846-1200

	DATE: 05/07/2021	JELD-WEN 3737 Lakeport Blvd Klamath Falls, OR. 97601 Phone: (800) 535-3936	
DRAWN BY: M.HAM	SCALE: NTS		
CHECKED BY: J.GOOSSEN	TITLE: Premium Vinyl Stationary Casement Window - Impact		
APPROVED BY: J.GOOSSEN			
RECORD No.: D014556			
REPORT No.: 110-17-006	CAD DWG. No.: PremVinylFixedCsmt Cert	REV: A	SHEET 3 OF 4

MASONRY STRAP STEEL INSTALLATION

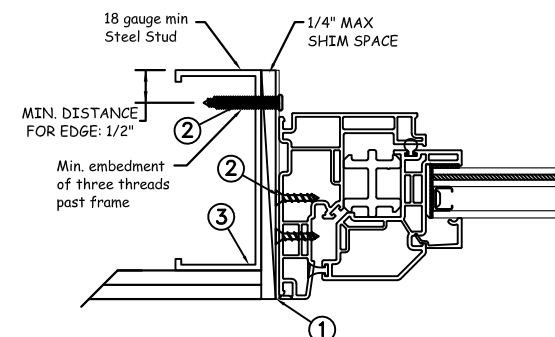


TYPICAL ELEVATION WITH FASTENER SPACING



GLAZING DETAIL
Scale: 2:1

FRAME SECTION (TYP)
VERTICAL SECTION



JAMB SECTION (TYP)
HORIZONTAL SECTION

Max Frame	DP RATING	IMPACT
36 x 72	+50/-55	YES

MISSILE LEVEL D - WZ3

Installation Notes:

1. Seal flange/frame to substrate. Sill shall be set on a continuous serpentine bead of structural grade silicone caulk when no fastener is used to anchor the sill (typical).
2. Install masonry straps to vinyl frame using (4)#8 x 1/2" PH corrosion resistant fasteners. Secure straps with (2) #10 TEK self Tapping screws fastener into steel. Fasteners must be long enough to achieve minimum penetration of three threads past frame thickness. Steel substrate min. 18 ga., fy = 33ksi.
3. Host structure (wood buck, masonry, steel) to be designed and anchored to properly transfer all loads to the structure. The host structure is the responsibility of the architect or engineer of record for the project of installation.

General Notes:

1. The product shown herein is designed, tested and manufactured to comply with the wind load criteria of the 2018 International Residential Code (IRC), the 2018 International Building Code (IBC).
2. All glazing shall conform to ASTM E1300.
3. At minimum, glazing shall be 3.2mm annealed - 10.8mm airspace - 3.0mm annealed - 2.3mm PVB Interlayer by Kuraray - 3.0mm annealed insulating glass.
4. Use structural or composite shims where required.

This schedule addresses only the fasteners required to anchor the window to achieve the rated design pressure up to the size limitations noted. It is not intended as a guide to the installation process and does not address the sealing consideration that may arise in different wall conditions. For the complete installation procedure, see the instructions packaged with the window or go to www.jeld-wen.com.

DISCLAIMER:

This drawing and its contents are confidential and are not to be reproduced or copied in whole or in part or used or disclosed to others except as authorized by JELD-WEN Inc.



2021.05.13 13:56:39 -04'00'
JOSEPH A. REED, P.E.
Texas No. 100777
5 LEIGH DRIVE
YORK, PA. 17406
(717) 846-1200

	DATE: 05/07/2021	JELD-WEN 3737 Lakeport Blvd Klamath Falls, OR. 97601 Phone: (800) 535-3936
DRAWN BY: M.HAM	SCALE: NTS	
CHECKED BY: J.GOOSEN	TITLE: Premium Vinyl Stationary Casement Window - Impact	
APPROVED BY: J.GOOSEN		
RECORD No.: D014556		
REPORT No.: 110-17-006	CAD DWG. No.: PremVinylFixedCsmt Cert	REV: A
		SHEET 4 OF 4