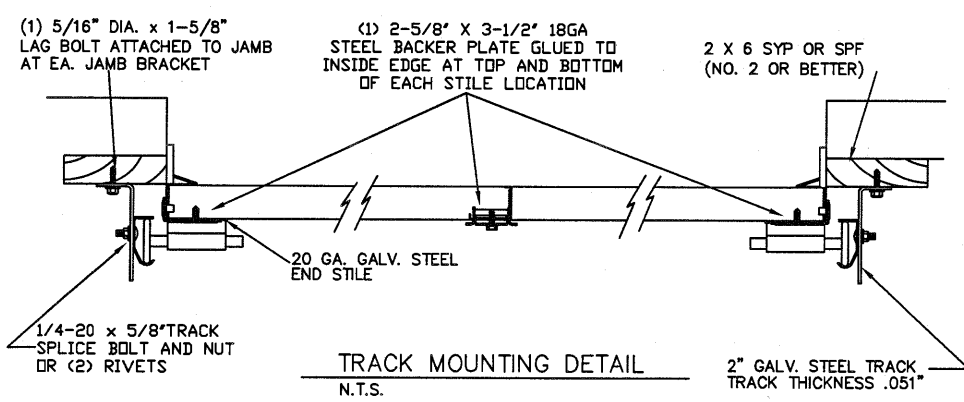


LARGE MISSILE IMPACT RESISTANT

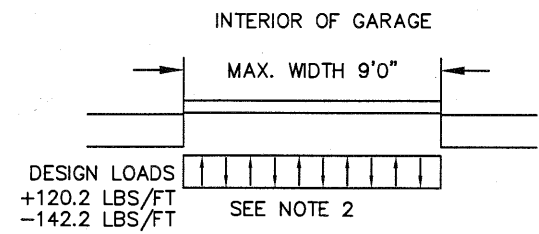
SPECIFICATIONS AND NOTES

1. ALL THE LOAD FROM THE DOOR IS TRANSFERRED TO THE VERTICAL TRACK, FROM THE TRACK THE LOAD IS TRANSFERRED TO THE VERTICAL JAMBS. THE HORIZONTAL JAMB OR HEADER RECEIVES NO PORTION OF THE LOAD
2. EACH VERTICAL JAMBS RECEIVES MAXIMUM DESIGN LOADS OF: +120.2 LBS/FT & -142.2 LBS/FT
3. DOOR AND HARDWARE WILL BE DESIGNED, MANUFACTURED AND INSTALLED WITH STANDARDS AS SET FORTH BY DASMA.
4. DOOR SECTIONS SHALL BE 24 GA. (.0216) MIN. EXTERIOR SKIN ROLLED FORMED, W/ BAKED ON POLYESTER FINISH
5. DOORS OVER (4) SECTIONS REFER TO TABLES 1 AND 2
6. SUPPORTING STRUCTURAL ELEMENTS SHALL BE DESIGNED BY A REGISTERED PROFESSIONAL ENGINEER FOR WIND LOADS



THE METHOD OF TESTING WAS IN SUBSTANTIAL CONFORMANCE WITH THE PROCEDURE DESCRIBED IN DASMA 108 & 115, ASTM E330, E1886, E1996, & F588. THE PRESSURES SHOWN ON THE DRAWINGS WERE CALCULATED USING ASCE 7-98/02/05 WITH THE FOLLOWING PARAMETERS (5 FEET OF DOOR WIDTH IN THE END ZONE, ROOF AT ANY SLOPE I=1.0):

| WIND SPEED (MPH) | 130 | 118 | 112 | 107 | 103 |
|------------------|-----|-----|-----|-----|-----|
| EXPOSURE LEVEL | B | C | C | D | D |
| MEAN ROOF HEIGHT | 30' | 15' | 25' | 15' | 25' |



| REV | DESCRIPTION OF REVISIONS | DATE | BY |
|-----|--|---------|-----|
| A | ADDED SHORT PANEL POLYCARBONATE GLZ OPTION | 1/13/20 | DLJ |

MAX SIZE
9' WIDTH
14' HEIGHT

DESIGN LOADS
+26.7 PSF
-31.6 PSF

TEST LOADS
(1.5 x DESIGN LOADS)
+40.1 PSF
-47.4 PSF

LARGE MISSILE IMPACT RESISTANCE

Thomas L. Shelmerdine, PE (TX PE #85829)
Structural Solutions, PA (TX Firm #F-004063)

STATE OF TEXAS
THOMAS L. SHELMERDINE
85829
PROFESSIONAL ENGINEER
TX

5921-G W. Friendly Ave., Greensboro, NC 27410

Amarr
ENTREMATIC
165 CARRIAGE COURT WINSTON-SALEM, N.C. 27105

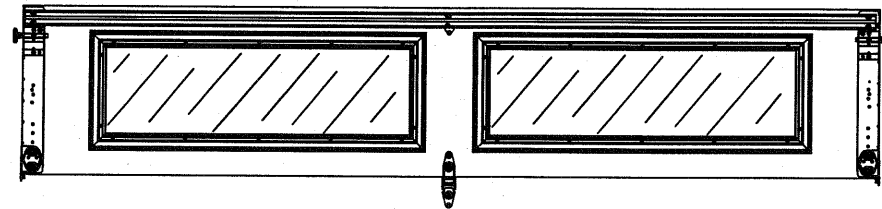
MODEL #1200 HERITAGE 3000
MODEL #1200 OAK SUMMIT 3000
SHORT, LONG, FLUSH & OAK SUMMIT PANELS

| SIZE | DRAWN BY | RLR | DATE | 07/28/14 | DRAWING NUMBER |
|------|------------|-----|------|----------|-------------------|
| B | CHECKED BY | | DATE | | IRC-1209-130-11-1 |

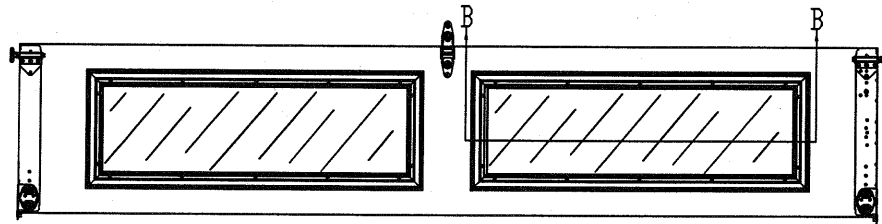
SHEET 1 OF 3

OPTIONAL SHORT AND LONG PANEL GLAZING LAYOUTS
GLAZING MEETS ASTM E1300-04

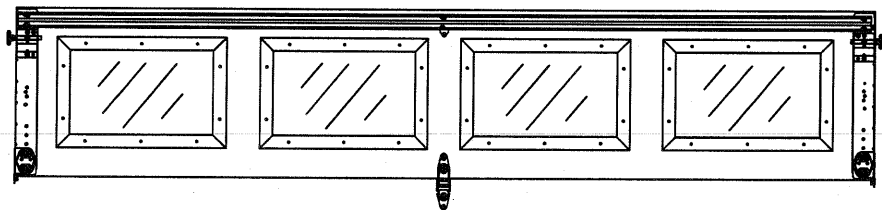
TOP SECTION



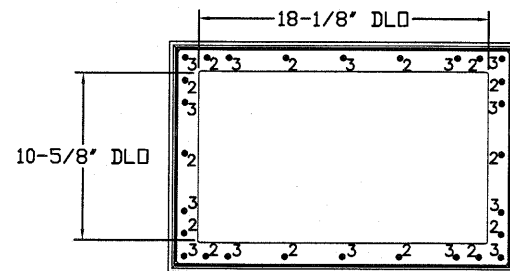
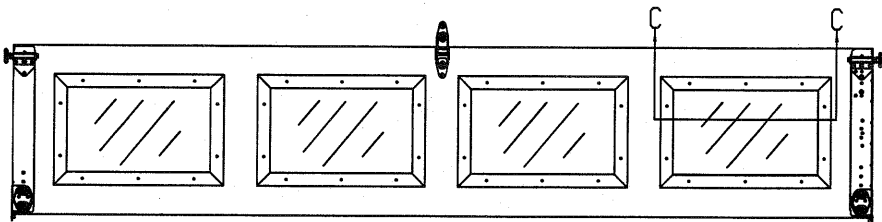
INTERMEDIATE SECTION



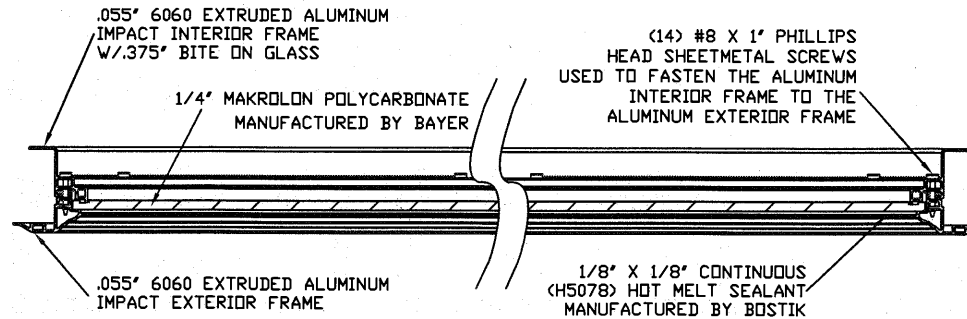
TOP SECTION



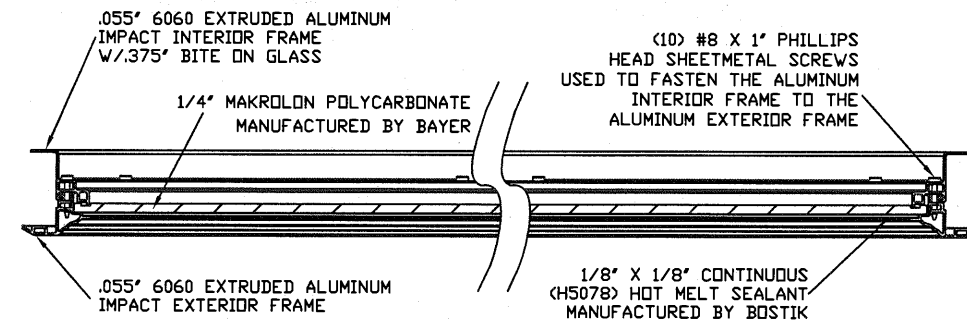
INTERMEDIATE SECTION



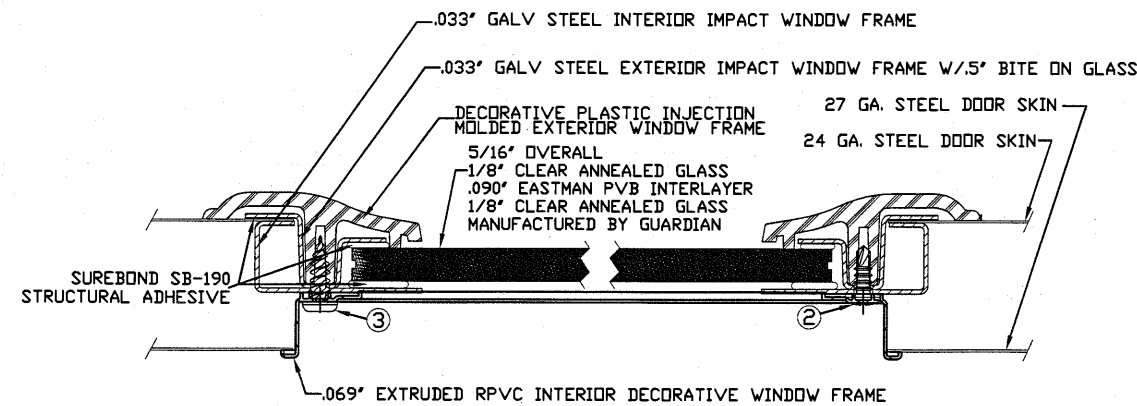
ALTERNATE IMPACT GLAZING FASTENER DETAIL
N.T.S.
GLAZING MEETS ASTM E1300-04



SECTION B-B LONG PANEL IMPACT WINDOW DETAIL
N.T.S.

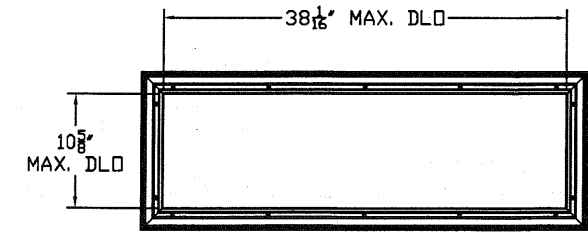


SECTION C-C SHORT PANEL IMPACT WINDOW DETAIL
N.T.S.

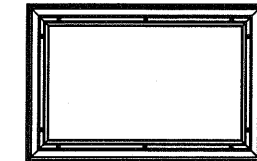


2. 3/16" X 1/2" SCREW - USED TO FASTEN THE STEEL EXTERIOR IMPACT WINDOW FRAME TO THE STEEL INTERIOR IMPACT WINDOW FRAME.
3. 11/64" X 1/2" SCREW - USED TO FASTEN DECORATIVE PLASTIC MOLDED WINDOW FRAME TO THE ASSEMBLY

SECTION C-C ALTERNATE IMPACT WINDOW DETAIL
N.T.S.



LONG PANEL IMPACT GLAZING FASTENER DETAIL
N.T.S.



SHORT PANEL IMPACT GLAZING FASTENER DETAIL
N.T.S.

| REV | DESCRIPTION OF REVISIONS | DATE | BY |
|-----|--|---------|-----|
| A | ADDED SHORT PANEL POLYCARBONATE GLZ OPTION | 1/13/20 | DLJ |

| | | |
|--|--|--|
| MAX SIZE 9' WIDTH 14' HEIGHT | | DESIGN LOADS +26.7 PSF -31.6 PSF |
| TEST LOADS (1.5 x DESIGN LOADS) +40.1 PSF -47.4 PSF | | |
| LARGE MISSILE IMPACT RESISTANCE | | |
| TX | | |

Amarr
ENTRE/MATIC
165 CARRIAGE COURT WINSTON-SALEM, N.C. 27105

MODEL #1200 HERITAGE 3000
MODEL #1200 OAK SUMMIT 3000
SHORT, LONG, FLUSH & OAK SUMMIT PANELS

| | | | |
|-----------|-----------------|------------------|-------------------------------------|
| SIZE B | DRAWN BY RLR | DATE 07/28/14 | DRAWING NUMBER IRC-1209-130-11-1 |
| | CHECKED BY | DATE | |

SHEET 2 OF 3

5921-G W. Friendly Ave., Greensboro, NC 27410

WOOD JAMB ATTACHMENT TO STRUCTURE

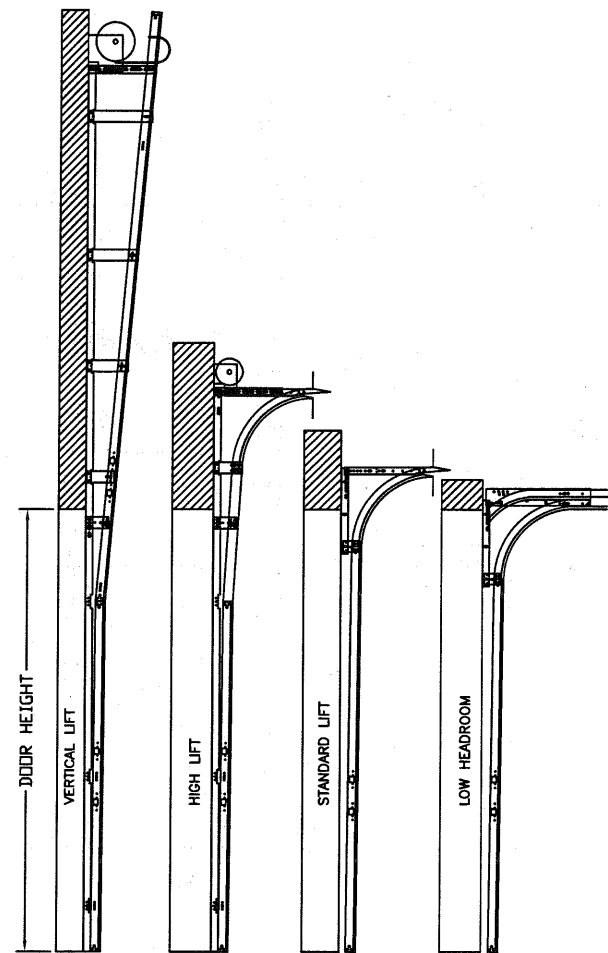
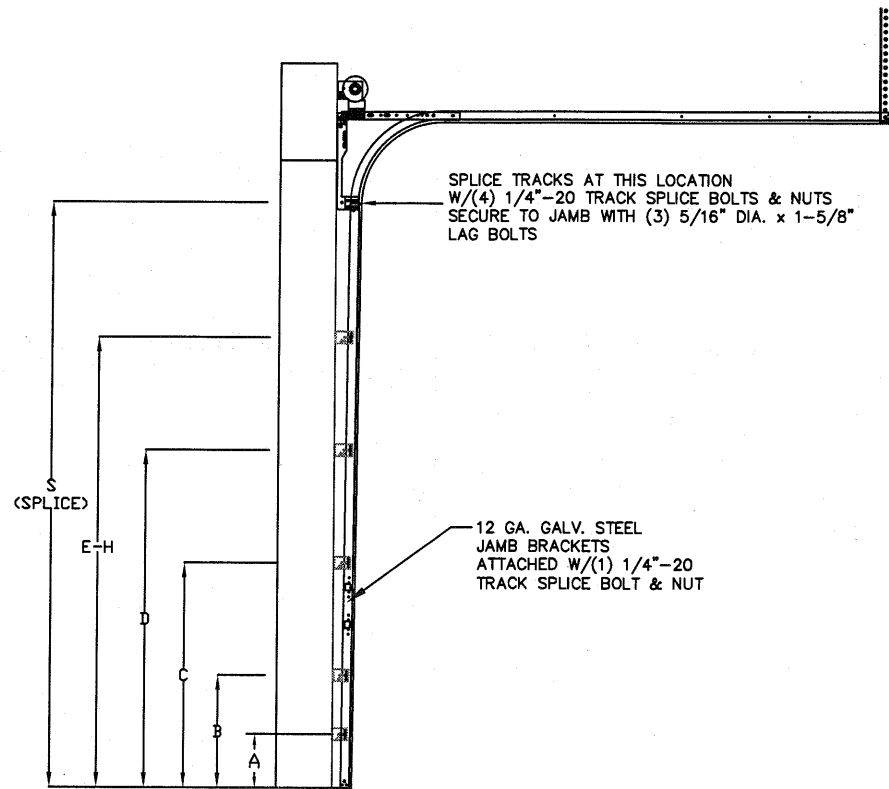
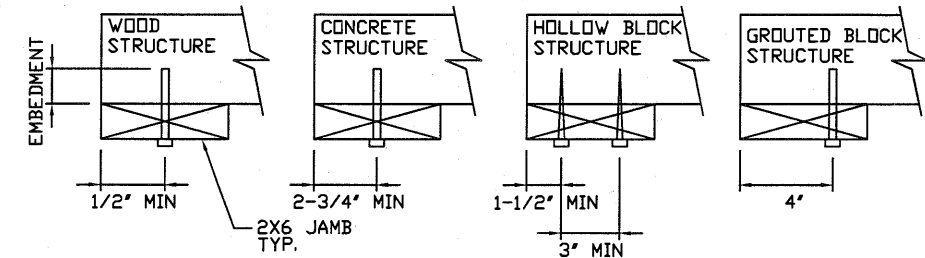
2 X 6 VERTICAL JAMB ATTACHMENT TO WOOD FRAME STRUCTURE
 5/16" X 3" LAG SCREWS STARTING 6" FROM ENDS THEN 24" O.C. (1 1/2" EMBEDMENT)

2 X 6 VERTICAL JAMB ATTACHMENT TO 2,000 PSI CONCRETE
 HILTI KWIK BOLT 3/8" X 4" STARTING 6" FROM ENDS THEN 24" O.C. (2 1/2" EMBEDMENT)
 HILTI SLEEVE ANCHOR 3/8" X 2-3/4" STARTING 6" FROM ENDS THEN 24" O.C. (1 1/4" EMBEDMENT)
 ITW/RAMSET REDHEAD (TRU-BOLT) 3/8" X 4" STARTING 6" FROM ENDS THEN 24" O.C. (2 1/2" EMBEDMENT)

2 X 6 VERTICAL JAMB ATTACHMENT TO HOLLOW C-90 BLOCK
 SIMPSON 1/4" X 3" TITEN SCREWS STARTING 6" FROM ENDS, USE PAIRS OF FASTENERS (3" APART) AT 24" O.C. (1 1/2" EMBEDMENT)
 HILTI 1/4" X 2-3/4" KWIK-CON II+ SCREWS STARTING 6" FROM ENDS, USE PAIRS OF FASTENERS (3" APART) AT 24" O.C. (1 1/4" EMBEDMENT)

2 X 6 VERTICAL JAMB ATTACHMENT TO GROUTED C-90 BLOCK (2000 PSI GROUT)
 HILTI SLEEVE ANCHOR 3/8" X 2-3/4" STARTING 6" FROM ENDS THEN 24" O.C. (1 1/4" EMBEDMENT) (OR, USE FASTENERS FOR HOLLOW C-90 BLOCK)

*LAGS AND BOLTS CAN BE COUNTERSUNK TO PROVIDE A FLUSH MOUNTING SURFACE.
 *PREPARATION OF WOOD JAMBS BY OTHERS



AVAILABLE TRACK CONFIGURATIONS
N.T.S.

TRACK CONFIGURATION FOR 6'6" UP TO 14' TALL DOORS (SEE TABLE 1)
N.T.S.

TABLE 1

| DOOR HEIGHT | TRACK ATTACHMENT | | | | | | | | SPLICE S |
|-------------|------------------|-----|-----|-----|-----|------|------|------|----------|
| | A | B | C | D | E | F | G | H | |
| 6' 6" | 10" | 21" | 42" | 63" | | | | | 70" |
| 7' | 10" | 21" | 42" | 63" | | | | | 76" |
| 7' 6" | 10" | 21" | 42" | 63" | | | | | 82" |
| 8' | 10" | 21" | 42" | 63" | | | | | 88" |
| 8' 6" | 10" | 21" | 42" | 63" | 84" | | | | 94" |
| 9' | 10" | 21" | 42" | 63" | 84" | | | | 100" |
| 9' 6" | 10" | 21" | 42" | 63" | 84" | | | | 106" |
| 10' | 10" | 21" | 42" | 63" | 84" | 105" | | | 112" |
| 10' 6" | 10" | 21" | 42" | 63" | 84" | 105" | | | 118" |
| 11' | 10" | 21" | 42" | 63" | 84" | 105" | | | 124" |
| 11' 6" | 10" | 21" | 42" | 63" | 84" | 105" | | | 130" |
| 12' | 10" | 21" | 42" | 63" | 84" | 105" | 126" | | 136" |
| 12' 6" | 10" | 21" | 42" | 63" | 84" | 105" | 126" | | 142" |
| 13' | 10" | 21" | 42" | 63" | 84" | 105" | 126" | | 148" |
| 13' 6" | 10" | 21" | 42" | 63" | 84" | 105" | 126" | 147" | 154" |
| 14' | 10" | 21" | 42" | 63" | 84" | 105" | 126" | 147" | 160" |

ALL TRACK ATTACHMENT SPACING +/-2" ALLOWED WITH SYP OR SPF NO. 2 OR BETTER ONLY

TABLE 2

| DOOR HEIGHT | SECTION HEIGHTS | | | | | | | |
|-------------|-----------------|-----|-----|-----|-----|-----|-----|-----|
| | Btm | #2 | #3 | #4 | #5 | #6 | #7 | #8 |
| 14' 0" | 21" | 21" | 21" | 21" | 21" | 21" | 21" | 21" |
| 13' 6" | 21" | 21" | 21" | 21" | 21" | 18" | 18" | 21" |
| 13' 0" | 21" | 21" | 21" | 18" | 18" | 18" | 18" | 21" |
| 12' 6" | 21" | 18" | 18" | 18" | 18" | 18" | 18" | 21" |
| 12' 0" | 21" | 21" | 21" | 21" | 21" | 18" | 21" | |
| 11' 6" | 21" | 21" | 21" | 18" | 18" | 18" | 21" | |
| 11' 0" | 21" | 18" | 18" | 18" | 18" | 18" | 21" | |
| 10' 6" | 21" | 21" | 21" | 21" | 21" | 21" | | |
| 10' 0" | 21" | 21" | 21" | 18" | 18" | 21" | | |
| 9' 6" | 21" | 18" | 18" | 18" | 18" | 21" | | |
| 9' 0" | 18" | 18" | 18" | 18" | 18" | 18" | | |
| 8' 6" | 21" | 21" | 21" | 18" | 21" | | | |
| 8' 0" | 21" | 18" | 18" | 18" | 21" | | | |
| 7' 6" | 18" | 18" | 18" | 18" | 18" | | | |
| 7' 0" | 21" | 21" | 21" | 21" | | | | |
| 6' 6" | 21" | 18" | 18" | 21" | | | | |

TABLE 3

| Section Width (ft) | Panel Type | Center Stile Location (Measured from Left Edge) |
|--------------------|------------|---|
| 8' 0" | Short | 48.000 |
| 8' 0" | Long | 48.000 |
| 8' 2" | Short | 49.000 |
| 8' 2" | Long | 49.000 |
| 8' 4" | Short | 50.000 |
| 8' 4" | Long | 50.000 |
| 8' 6" | Short | 51.000 |
| 8' 6" | Long | 51.000 |
| 8' 8" | Short | 52.000 |
| 8' 8" | Long | 52.000 |
| 8' 10" | Short | 53.000 |
| 8' 10" | Long | 53.000 |
| 9' 0" | Short | 54.000 |
| 9' 0" | Long | 54.000 |

| REV | DESCRIPTION OF REVISIONS | DATE | BY |
|-----|--|---------|-----|
| A | ADDED SHORT PANEL POLYCARBONATE GLZ OPTION | 1/13/20 | DLJ |

MAX SIZE
9' WIDTH
14' HEIGHT

DESIGN LOADS
+26.7 PSF
-31.6 PSF

TEST LOADS
(1.5 x DESIGN LOADS)
+40.1 PSF
-47.4 PSF

LARGE MISSILE
IMPACT
RESISTANCE

THOMAS L. SHELMERDINE
85829
LICENSED PROFESSIONAL ENGINEER
TX

Thomas L. Shelmerdine, PE (TX PE #85829)
Structural Solutions, PA (TX Firm #F-004063)

5921-G W. Friendly Ave., Greensboro, NC 27410

ENTREMATIC
165 CARRIAGE COURT WINSTON-SALEM, N.C. 27105

MODEL #1200 HERITAGE 3000
MODEL #1200 OAK SUMMIT 3000
 SHORT, LONG, FLUSH & OAK SUMMIT PANELS

| SIZE | DRAWN BY | RLR | DATE | 07/28/14 | DRAWING NUMBER |
|------|------------|-----|------|----------|-------------------|
| B | CHECKED BY | | DATE | | IRC-1209-130-11-1 |

SHEET 3 OF 3