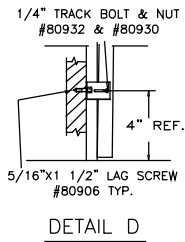


NOTES:

- REGAL SHOWN, CELEBRITY, AMERICAN 100, CS, XL, CSX, CSL OR VANTAGE SERIES MAY BE SUBSTITUTED.
- STRUTS ATTACHED WITH 2 SELF DRILLING SCREWS 1/4"-20 x 3/4" AT EACH STILE LOCATION
- 4 SECTION HIGH DOOR SHOWN (7FT). TALLER DOOR CONFIGURATIONS MAY BE CONSTRUCTED UP TO A MAXIMUM OF 14FT HIGH, USING SAME PANEL CONSTRUCTION AS SHOWN (MAXIMUM SECTION HEIGHT OF 21").
- SECTIONS EMBOSSED 14.00"x20.375", 16" X20.375", 14"x41", 16"x40" OR SECTIONS WITHOUT EMBOSSEMENT MAY ALSO BE USED. (LOCATION AND QUANTITY OF CENTER STILES MUST BE THE SAME).
- MINIMUM STEEL THICKNESS FOR SECTION IS 25 GA. (.0185").
- TORSION SPRINGS OR EXTENSION SPRINGS AVAILABLE.
- A LOCK MUST BE ATTACHED EITHER SIDE OF DOOR. CAM & BAR LOCKS OR AN OPENER MAY BE SUBSTITUTED.
- WOOD MOUNT SHOWN, STEEL AND MASONRY ANGLE AND REVERSE ANGLE MOUNT AVAILABLE. NUMBER OF JAMB BRACKET ANCHOR LOCATIONS MUST BE THE SAME.
- JAMB DETAIL IN ACCORDANCE WITH DWG. # RCWL-0001
- THIS DOOR HAS NOT BEEN TESTED FOR WIND-BORNE DEBRIS.
- USE THIS DRAWING IN CONJUNCTION WITH INSTALLATION INSTRUCTIONS. WHERE THE DRAWING CONFLICTS WITH OTHER INSTALLATION INSTRUCTIONS, THIS DRAWING GOVERNS.
- AVAILABLE NON-IMPACT WINDOWS: MOLDED PLASTIC FRAMES INSIDE AND OUTSIDE. THE FRAMES CLAMP THE PAN STEEL AND GLASS. GLASS IS ANNEALED SSB (3/32" THICK) WITH CLEAR OPENING UP TO 41-1/4" WIDE x 13-3/8" TALL. FRAMES ARE ASSEMBLED WITH #8 PAN-HEAD PHILLIPS SCREWS, USING 10" OR LESS SPACING BETWEEN SCREWS.

Strut Requirements

# sections	# Struts
	2-1/4"
4	4
5	5
6	6
7	7
8	8



Track Bracket Locations

DOOR HEIGHT	"A"	"B"	"C"
6'-6" thru 7'-0"	4"	42"	X
7'-6" Thru 8'-9"	4"	42"	60"

For Doors over 9' high one Jamb bracket per section must be added and positioned within 3" of the roller.

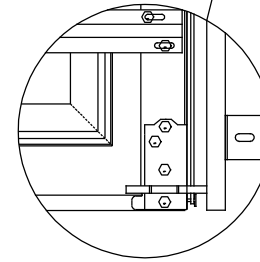
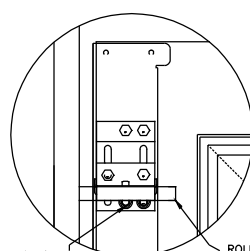
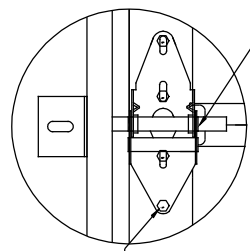
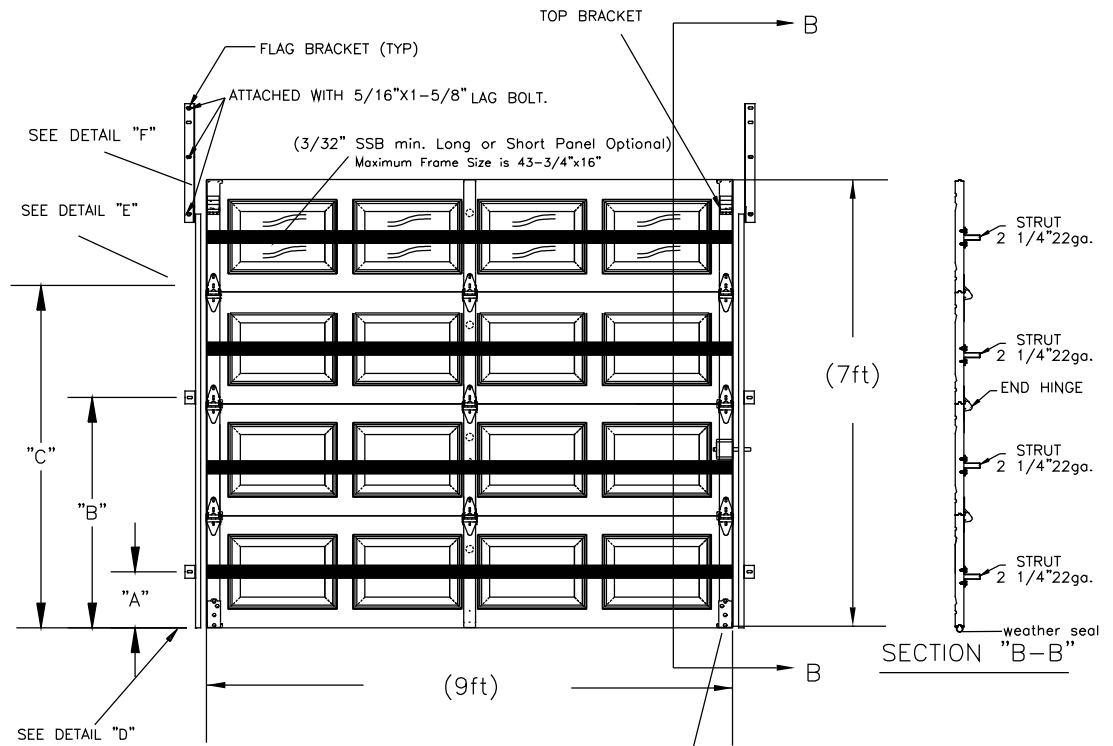
Approved Pressures

DOOR WIDTH	DESIGN PRESSURE	CENTER STILES
8'-00"	+ 18.1 PSF / -20.4 PSF	1
9'-00"	+ 16.1 PSF / -18.2 PSF	1
10'-00"	+ 13.0 PSF / -14.7 PSF	2
11'-00"	+ 10.7 PSF / -12.1 PSF	2

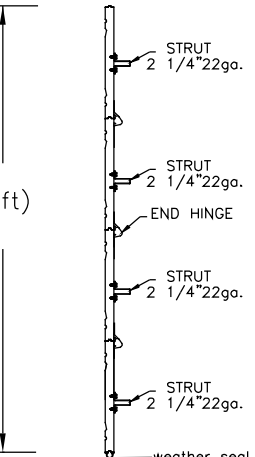
COMPLIES WITH IBC/IRC 2018

This product was tested/evaluated in accordance with ANSI/DASMA 108

NOTES: THIS DRAWING AND / OR TECHNICAL INFORMATION ON THIS SHEET IS THE PROPERTY OF MID-AMERICA DOOR COMPANY AND IS LOANED IN CONFIDENCE FOR ENGINEERING AND MUTUAL ASSISTANCE PURPOSES ONLY, AND MAY NOT BE REPRODUCED OR USED TO MANUFACTURE ANYTHING DISCLOSED HEREON WITHOUT THE EXPRESSED PERMISSION OF MID-AMERICA DOOR COMPANY.



SECTION "B-B"



Rev.	By	Date	Description	Rev.	By	Date	Description	SCALE	N.T.S.	DATE
0		1/15/18	NEW DRAWING	0				DRAWN BY	BJR	01-15-18
1		1/24/18	NEW R. REVISION	9				INITIAL CHK.	BJR	-
2				10				FINAL CHK.		-
3				11				ENGR.		-
4				12				APPR. BY		-
5				13						-
6				14						-
7				15						-

PROFESSIONAL ENGINEER'S SEAL PROVIDED ONLY FOR VERIFICATION OF WINDLOAD CONSTRUCTION DETAILS

JOHN E. SCATES, P.E.
2550 King Arthur Blvd #124-24
Lewisville, TX 75056
TX P.E. # 51757
TX P.E. # 96508, F-2203

Mid-America Door Company PONCA CITY, OK

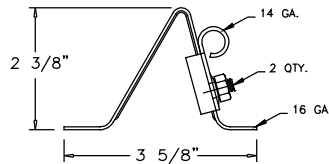
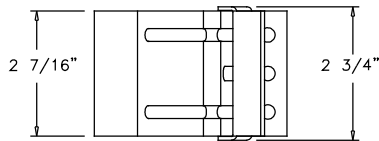
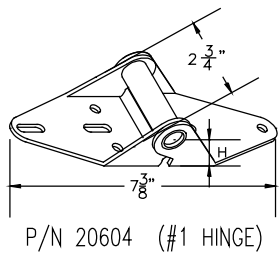
DESCRIPTION: REGAL/ CELEBRITY WINDLOAD SERIES

TITLE: WINDLOAD CONSTRUCTION DETAILS

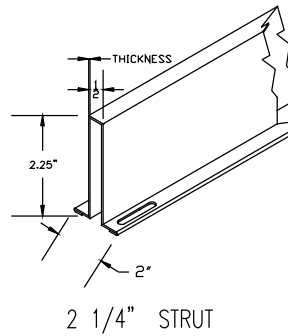
DWG. NO. RC-FWL3-0907

SHT. OF 2

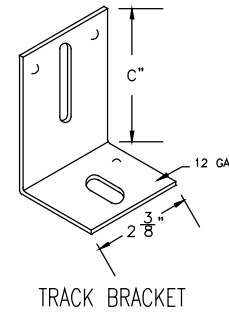
REV. 2



P/N 20356 TOP FIXTURE



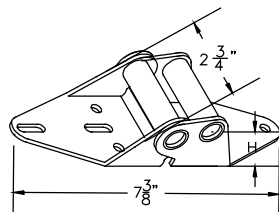
THICKNESS OF STRUTS ARE AS STATED BELOW	
2.25"	.028" MIN.



BRACKET #	"C"	PART NUMBER
4	3"	20368
5	3 1/4"	20370
6	3 1/2"	20372
7	3 3/4"	20374
8	4"	20376
9	4 3/4"	20378

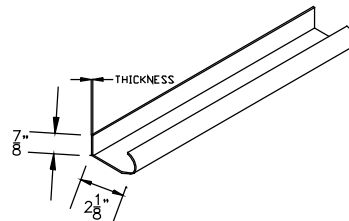
NOTES:

1. STRUTS ARE NOT MORE THAN 1 1/2" SHORTER THAN SECTION.
2. USE IN CONJUNCTION WITH INSTALLATION INSTRUCTIONS. WHERE THE DRAWING CONFLICTS WITH OTHER INSTALLATION INSTRUCTIONS, THIS DRAWING GOVERNS.



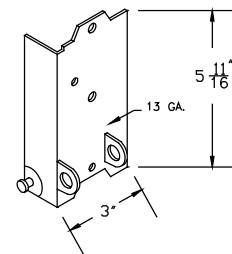
END HINGE

HINGE #	GAGE #	"H"	PART NUMBER
1	14	3/4"	20602
2	14	1"	20606
3	14	1 1/4"	20610
4	14	1 1/2"	20614
5	14	1 3/4"	20616
6	13	2"	20618

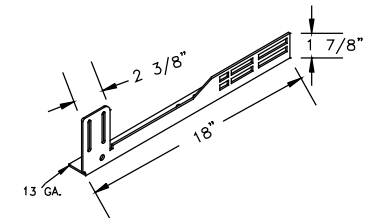


WINDLOAD TRACK

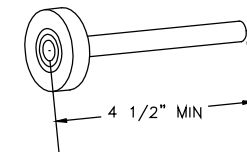
THICKNESS OF TRACK IS AS STATED BELOW	
VERTICAL TRACK IS MIN. 18 GA.	.045" MIN.
HORIZONTAL TRACK IS MIN. 18 GA.	.045" MIN.



P/N 20334&5 BOTTOM BRKT.



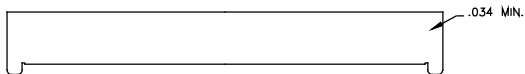
20366 & 7 FLAG BRACKET



P/N 20812
SHORT STEM 11 BALL NYLON COATED STEEL ROLLER



P/N 10455 & 10465 (21" & 18") CENTER STILE



P/N 10450 & 10460 (21" & 18") END STILE

PROFESSIONAL ENGINEER'S
SEAL PROVIDED ONLY FOR
VERIFICATION OF WINDLOAD
CONSTRUCTION DETAILS

JOHN E. SCATES, P.E.
2560 King Arthur Blvd #124-24
Lewisville, TX 75056
FL. P.E. # 51737
TX. P.E. # 56308, F-2203

NOTES: THIS DRAWING AND / OR TECHNICAL INFORMATION ON THIS SHEET IS THE PROPERTY OF MID-AMERICA DOOR COMPANY AND IS LOANED IN CONFIDENCE FOR ENGINEERING AND MUTUAL ASSISTANCE PURPOSES ONLY, AND MAY NOT BE REPRODUCED OR USED TO MANUFACTURE ANYTHING DISCLOSED HEREON WITHOUT THE EXPRESSED PERMISSION OF MID-AMERICA DOOR COMPANY.

Rev.	By	Date	Description	Rev.	By	Date	Description	SCALE	N.T.S.	DATE
0	BJR	1/15/18	NEW DESIGN	8				DRAWN BY	BJR	1-15-18
1	JAR	1/22/18	NEW P.N. NUMBER	9				INITIAL CHK.	BJR	-
2				10				FINAL CHK.	JAR	-
3				11				ENGR.		-
4				12				APPR. BY	JAR	-
5				13						
6				14						
7				15						

		PONCA CITY, OK
DESCRIPTION		
WINDLOAD SERIES HARDWARE		
TITLE	DWG. NO.	SHR. REV.
WINDLOAD CONSTRUCTION DETAILS	RC-FW13-0907	2/2