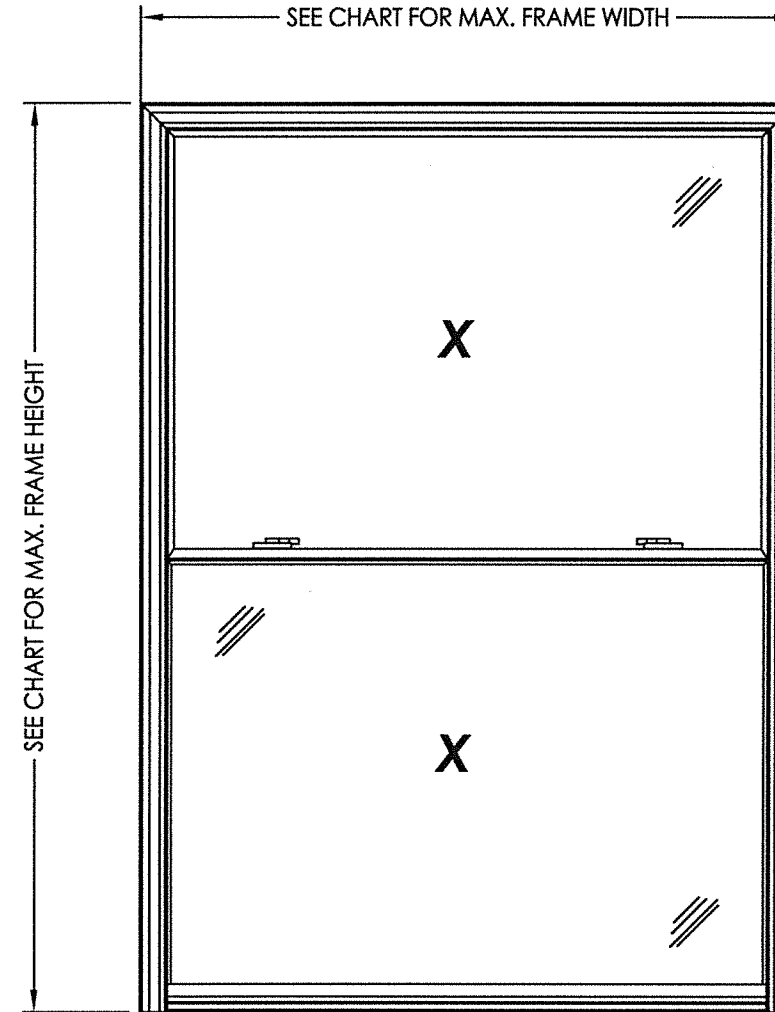


**MODEL "I" 201
EXTRUDED VINYL
DOUBLE HUNG WINDOW
"IMPACT"**



EVALUATED FOR USE IN THE STATE OF TEXAS

TDI WIN-887

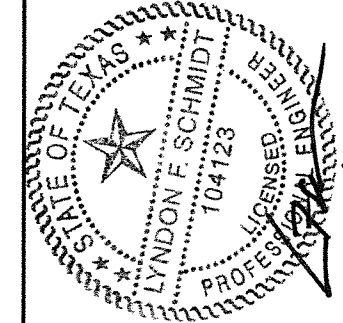
The Double Hung Window described herein complies with the 2018 International Residential Code (IRC), Sections R301 & R609 and the 2018 International Building Code (IBC), Sections 1404.13, 1609, 1709.5, 2403 and 2404 subject to the following conditions:

1. Anchors shall be as listed and spaced as shown in the details. Anchor embedment to base material shall be beyond roof covering.
2. When used in areas requiring wind-borne debris protection, this product complies with Section R301.2.1.2 of the IRC and Section 1609.2 of the IBC and does not require impact protection. This product meets missile level "D" and includes Wind Zone 3 as defined in ASTM E 1996.
3. Allowable design pressure requirements must be equal to or less than the design pressure rating shown in the design pressure chart, sheet 1 of this drawing.
4. Conditions not covered by this drawing are subject to further engineering analysis.

TABLE OF CONTENTS

SHEET#	DESCRIPTION
1	Typical elevations, design pressures & general notes
2	Vertical & horizontal cross sections & frame anchoring
3	Bill of materials, glazing detail and components

OVERALL FRAME DIMENSION	OVERALL D.L.O. (TOP)	OVERALL D.L.O. (BOTTOM)	GLASS TYPE	DESIGN PRESSURE (PSF)	
				POSITIVE	NEGATIVE
36.0" x 72.0"	30.12" x 31.75"	31.12" x 32.75"	G1	+55.0	-55.0
36.0" x 84.0"	30.12" x 37.75"	31.12" x 38.75"	G1	+50.0	-50.0
52.0" x 72.0"	46.0" x 31.75"	47.0" x 32.75"	G1	+50.0	-50.0

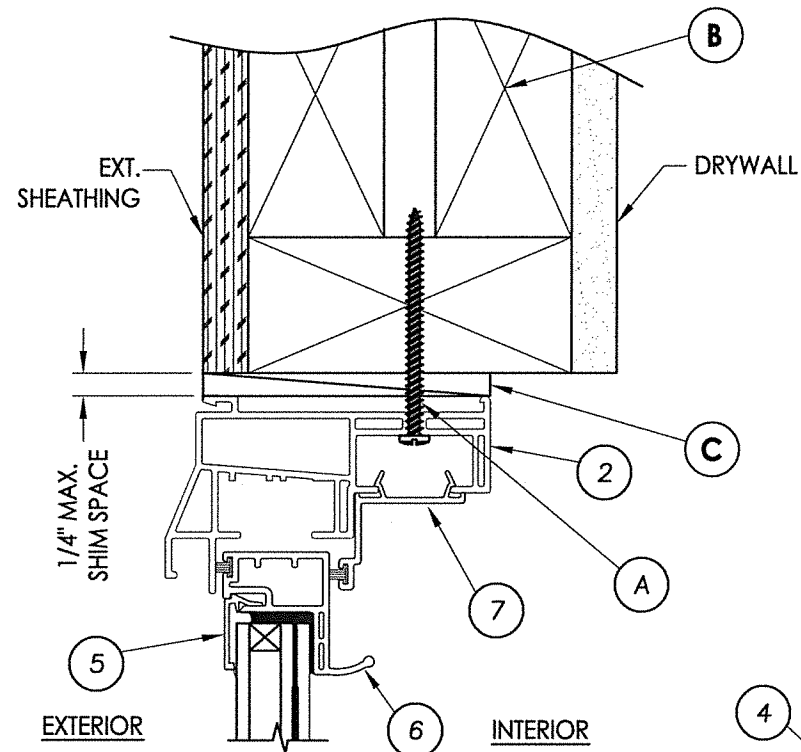
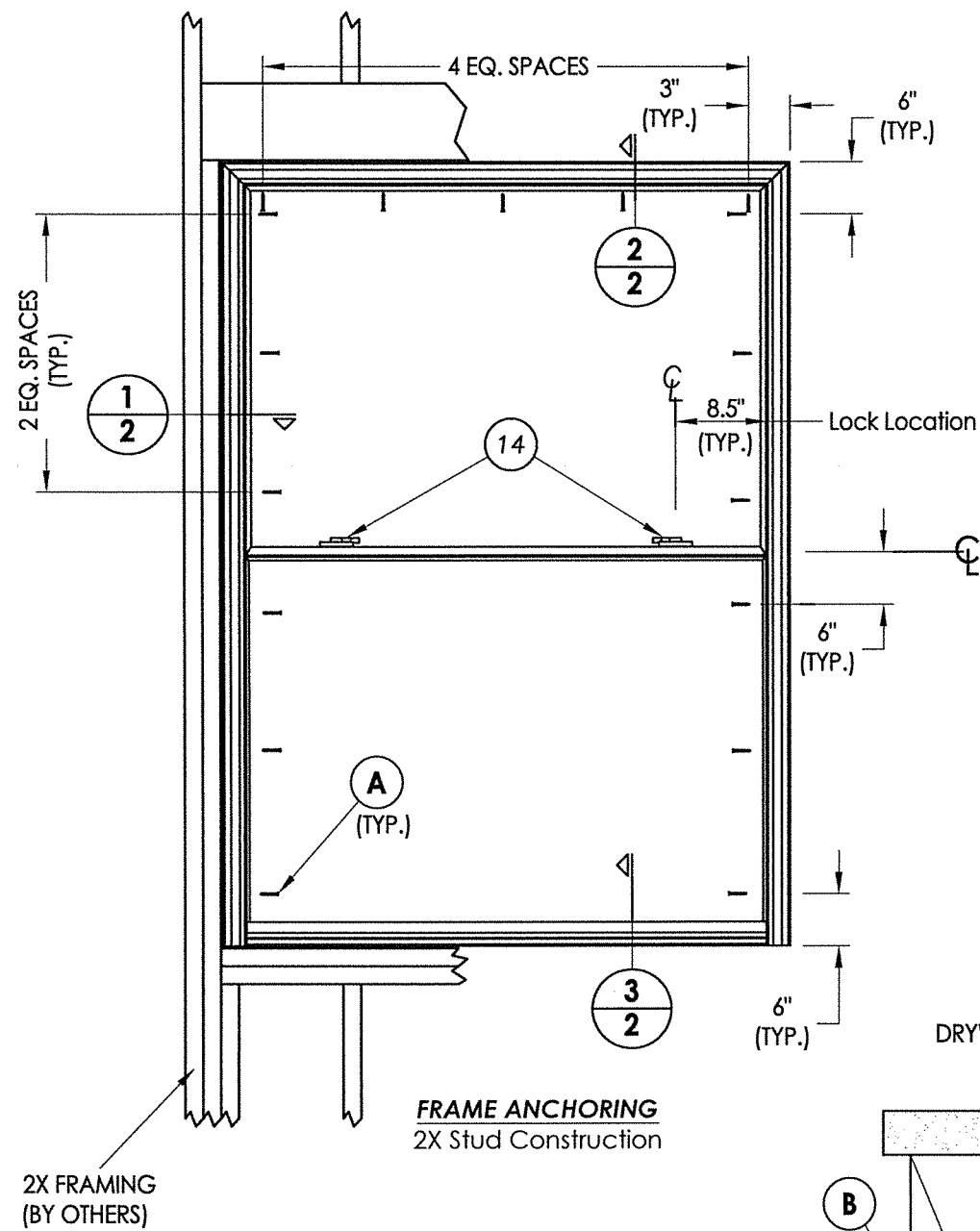


Documents Prepared By: Lyndon F. Schmidt, P.E.
TEXAS P.E. #104123
RW BUILDING CONSULTANTS, INC.
P.O. Box 230 Valrico FL 33595
Phone No.: 813.659.9197
TEXAS BOARD OF PROFESSIONAL ENGINEERS
CERTIFICATE OF REGISTRATION # F-11852

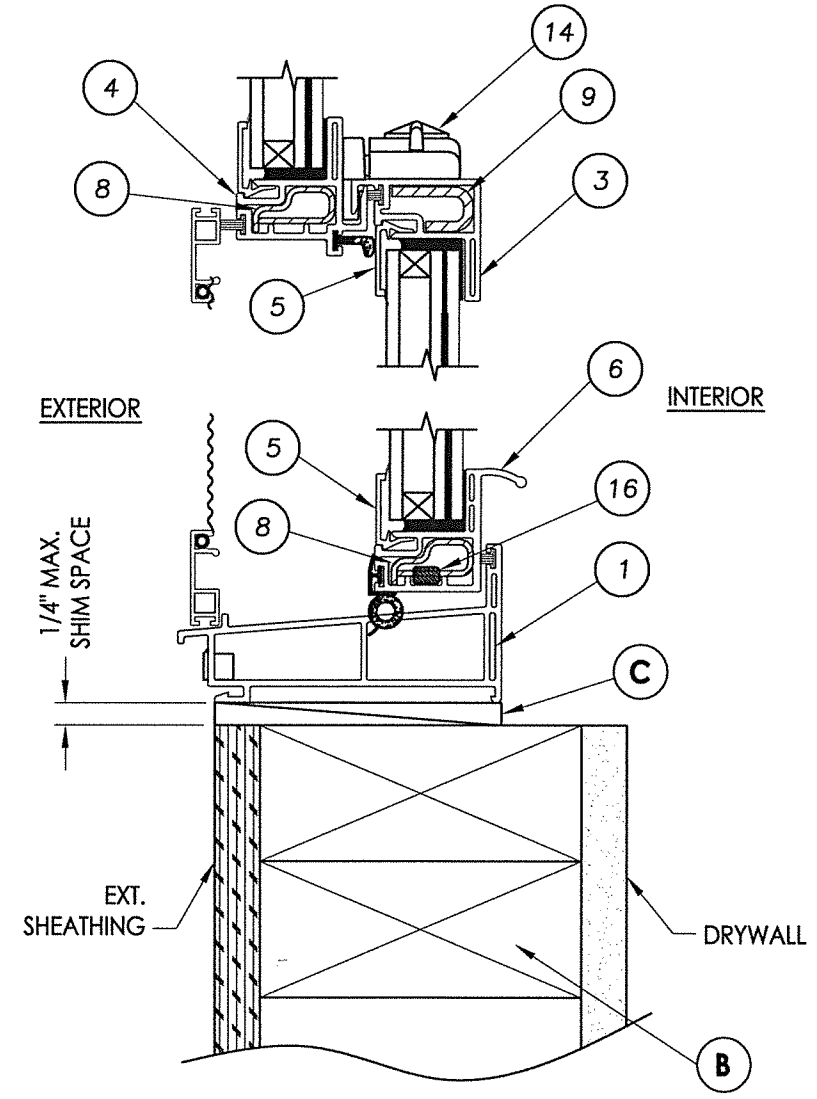
PRODUCT: DOUBLE HUNG WINDOW
PART OR ASSEMBLY: TYPICAL ELEVATION, DESIGN PRESSURES & GENERAL NOTES

NO.	DATE	BY	REVISIONS
1	6/09/21	LFS	UPDATE TO 2018 IBC/IRC

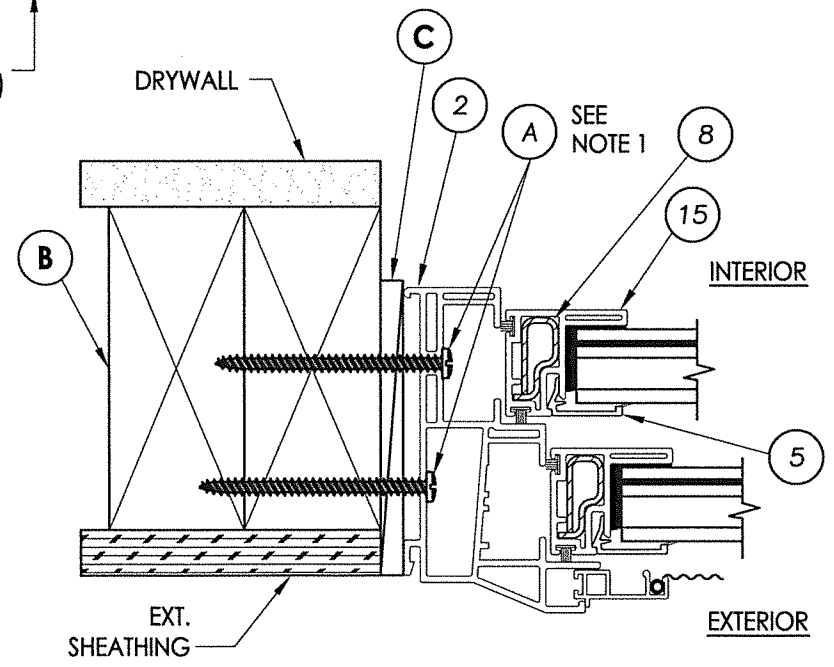
DATE: 1/06/15
SCALE: N.T.S.
DWG. BY: JK/LS
CHK. BY: LFS
DRAWING NO.: TX-4342
SHEET 1 OF 3



2 VERTICAL CROSS SECTION

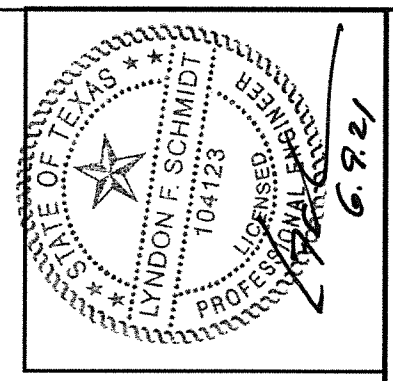


3 VERTICAL CROSS SECTION



1 HORIZONTAL CROSS SECTION

- NOTES:**
1. Anchors located above the meeting rail are in the interior track and anchors located below the meeting rail are in the exterior track.
 2. For widths <= 24" only two (2) head anchor screws are required, one 4" from each end.
 3. (2) #8 x 2-1/2" PH screws are installed through the tilt latch hooks into each jamb above the meeting rail.



Documents Prepared By: Lyndon F. Schmidt, P.E.
 TEXAS P.E. #104123

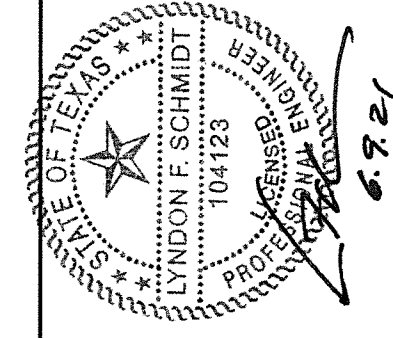
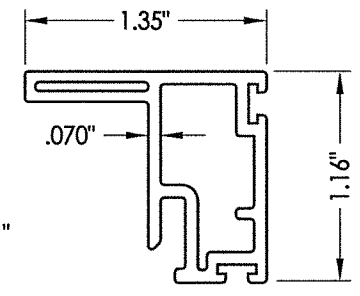
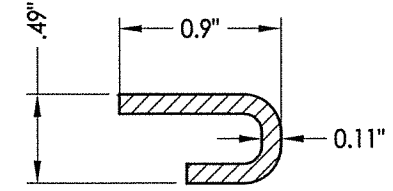
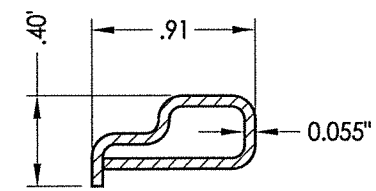
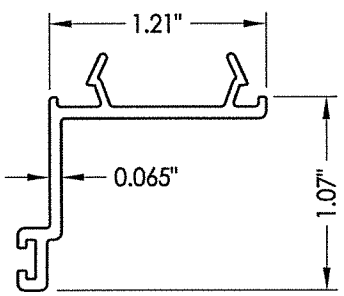
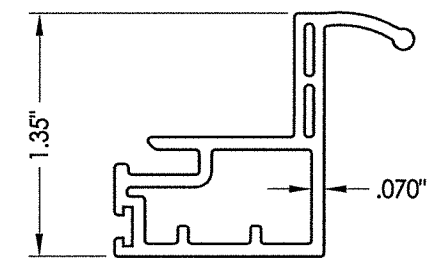
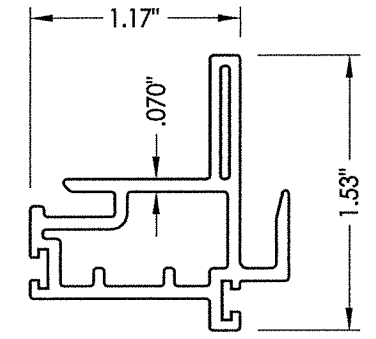
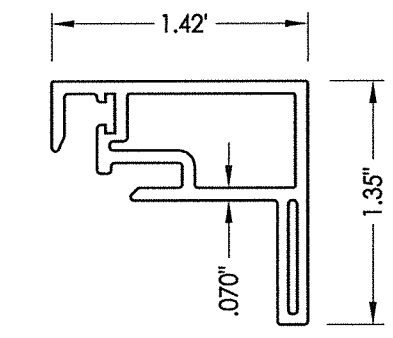
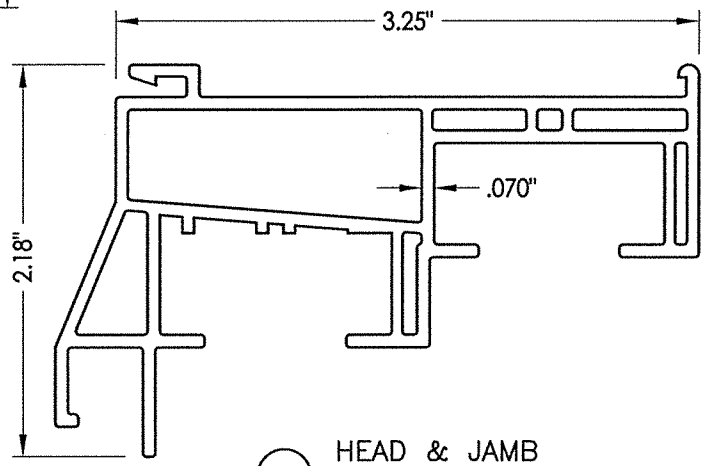
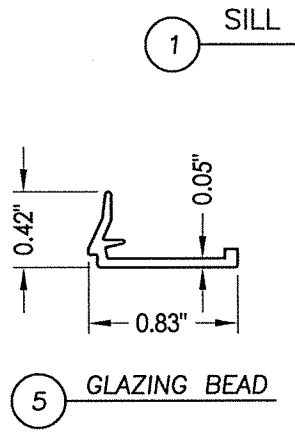
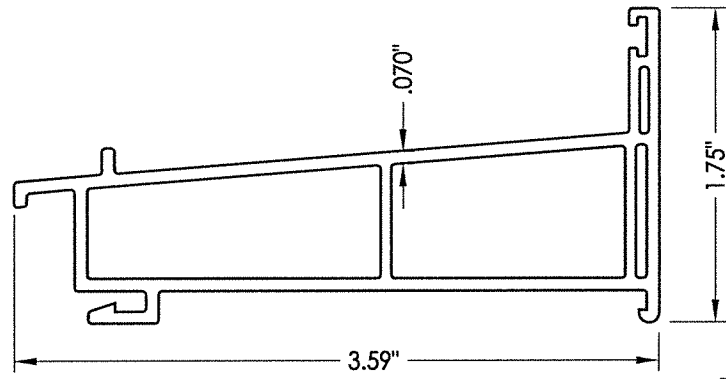
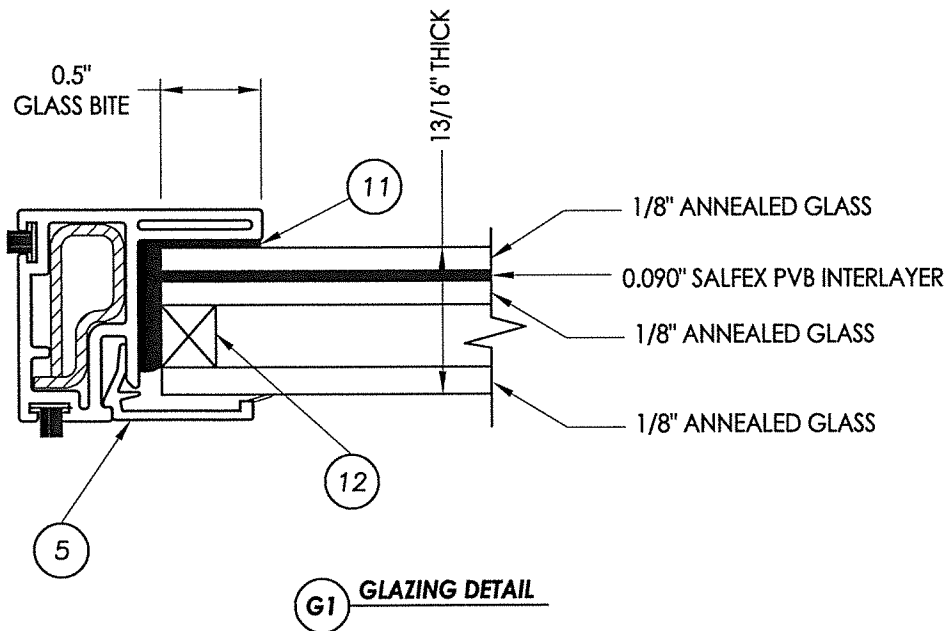
RW BUILDING CONSULTANTS, INC.
 P.O. Box 230 Valrico FL 33595
 Phone No.: 813.659.9197

TEXAS BOARD OF PROFESSIONAL ENGINEERS
 CERTIFICATE OF REGISTRATION # F-11852

PRODUCT:	DOUBLE HUNG WINDOW	
PART OR ASSEMBLY:	VERTICAL & HORIZONTAL CROSS SECTIONS & FRAME ANCHORING	
DATE:	1/06/15	
SCALE:	N.T.S.	
DWG. BY:	JK/LS	
CHK. BY:	LFS	
DRAWING NO.:	TX-4342	
SHEET	2 OF 3	
NO.	DATE	BY
1	6/09/21	UPDATE TO 2018 IBC/IRC
REVISIONS		

BILL OF MATERIALS		
ITEM #	DESCRIPTION	MATERIAL
A	#10 X 2-1/2" PPH WS (1-5/8" MIN. PENETRATION)	STEEL
B	2X FRAMING (G >= 0.42)	WOOD
C	1/4" MAX. SHIM SPACE	-
1	EXTRUDED VINYL SILL *	RIGID PVC
2	EXTRUDED VINYL HEAD & JAMB*	RIGID PVC
3	EXTRUDED VINYL LOCK RAIL *	RIGID PVC
4	EXTRUDED VINYL KEEPER RAIL *	RIGID PVC
5	EXTRUDED VINYL GLAZING BEAD *	RIGID PVC
6	EXTRUDED VINYL HANDLE RAIL *	RIGID PVC
7	EXTRUDED VINYL SASH STOP *	RIGID PVC
8	SASH STILE AND RAIL REINFORCEMENT	STEEL
9	LOCK RAIL REINFORCEMENT	STEEL
11	STRUCTURAL SEALANT (DOW 995)	SILCONE
12	STEEL INTERCEPT SPACER	STEEL
14	METAL BUTTON CAM LOCK (ASHLAND)	-
15	EXTRUDED VINYL SASH STILE *	RIGID PVC
16	PIVOTTRUE PIVOT BAR	-

* THE APPROVED WHITE RIGID PVC EXTERIOR EXTRUSIONS FOR WINDOWS ARE TO BE PRODUCED BY EXTRUDERS LICENSEES IN "AAMA CERTIFICATION PROGRAMS FOR RIGID PVC EXTRUSIONS".



Documents Prepared By: Lyndon F. Schmidt, P.E.
TEXAS P.E. #104123

RW BUILDING CONSULTANTS, INC.
P.O. Box 230 Valrico FL 33595
Phone No.: 813.659.9197

TEXAS BOARD OF PROFESSIONAL ENGINEERS
CERTIFICATE OF REGISTRATION # F-11852

PRODUCT: DOUBLE HUNG WINDOW

PART OR ASSEMBLY: BILL OF MATERIALS, GLAZING DETAIL & COMPONENTS

REVISIONS	
NO.	DATE
1	6/09/21
	UPDATE TO 2018 IBC/IRC
	LFS
	BY

DATE: 1/06/15

SCALE: N.T.S.

DWG. BY: JK/LS

CHK. BY: LFS

DRAWING NO.: TX-4342

SHEET 3 OF 3