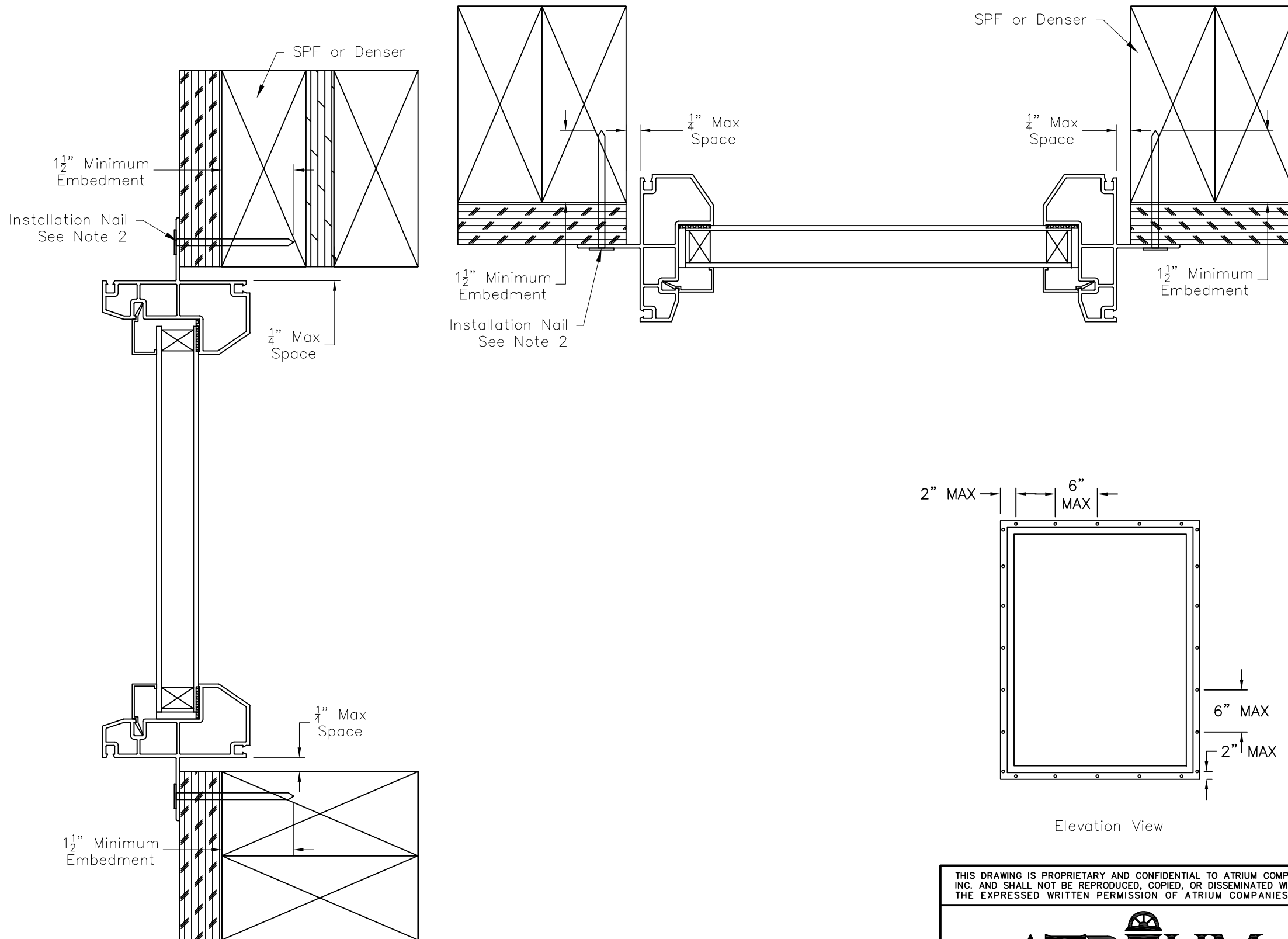
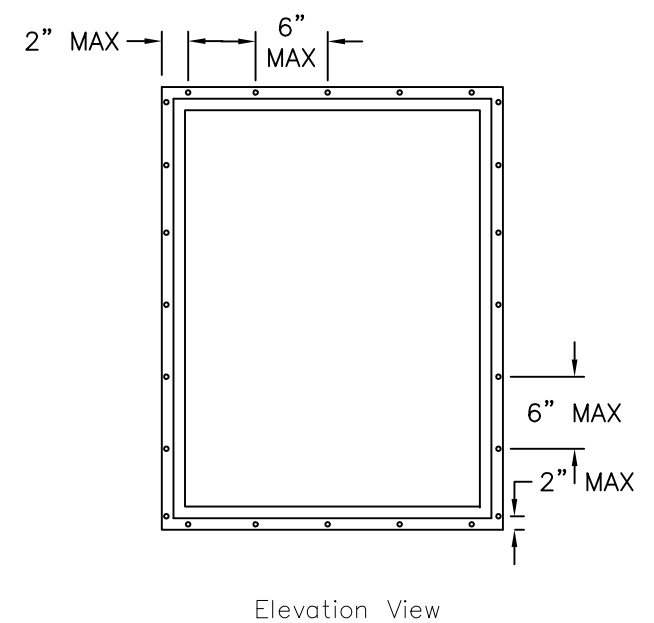


Table 1 – Verified Installations		
DP (psf)	Width (in)	Height (in)
+/- 50.0	82	72



- NOTES:
- INSTALLATIONS SHOWN ON THIS DRAWING HAVE BEEN VERIFIED AS THE AS-TESTED INSTALLATION FOR THE PERFORMANCE LEVEL SHOWN. VERIFIED PRODUCTS ARE LISTED IN TABLE 1. THIS DRAWING APPLIES ONLY TO THOSE PRODUCTS.
 - INSTALLATION ANCHORS SHALL BE NAILS (MIN. 0.113" SHANK DIAMETER) OR EQUIVALENT OF SUFFICIENT LENGTH TO ACHIEVE MINIMUM EMBEDMENT OF 1-1/2" INTO WOOD FRAMING MEMBER. SCREWS SHALL SATISFY NATIONAL DESIGN SPECIFICATION FOR MATERIAL PROPERTIES AND DIMENSIONS. PER NDS-2005 11.1.4.7, EDGE DISTANCES SHALL BE SUFFICIENT TO PREVENT SPLITTING.
 - WOOD FRAMING SHALL BE SPRUCE-PINE-FIR (G=0.42) OR DENSER.
 - INSTALLATION ANCHORS SHALL BE LOCATED WITHIN 1/2" OF THE SPECIFIED LOCATION.
 - MAXIMUM SHIM SPACE SHALL BE 1/4". SPACES GREATER THAN 1/16" REQUIRE LOAD BEARING SHIMS.
 - INSTALLATION ANCHORS ARE SHOWN GOING THROUGH EXTERIOR FINISH. ANCHORS MAY BE INSTALLED DIRECTLY INTO WOOD FRAMING MEMBER WITH 1-1/2" MINIMUM EMBEDMENT STILL REQUIRED.
 - INSTALLATION ANCHORS SHALL BE LOCATED 2" FROM CORNERS AND 6" MAXIMUM ON CENTER SPACING.
 - THESE INSTRUCTIONS ADDRESS STRUCTURAL REQUIREMENTS ONLY. WINDOWS SHALL BE INSTALLED PER ASTM E2112 OR FMA/AAMA 100.
 - SMALLER WINDOWS OF THE SAME CONSTRUCTION AND EQUAL OR LESSER DESIGN PRESSURES ARE COVERED BY THIS DRAWING.
 - GLAZING TYPE, GLASS TYPE, AND GLASS THICKNESS ARE ESTABLISHED BY THE CERTIFICATION AND SHALL SATISFY ASTM E1300. GLAZING TYPE MAY BE INSULATING GLASS OR SINGLE PANE GLASS.
 - PRODUCTS LISTED IN TABLE 1 ARE NOT IMPACT RESISTANT. IF USED IN WIND-BORNE DEBRIS REGIONS, APPROVED PROTECTION DEVICES ARE REQUIRED.
 - PRODUCT OR INSTALLATION IS NOT APPROVED FOR HIGH VELOCITY HURRICANE ZONE (HVHZ)



THIS DRAWING IS PROPRIETARY AND CONFIDENTIAL TO ATRIUM COMPANIES, INC. AND SHALL NOT BE REPRODUCED, COPIED, OR DISSEMINATED WITHOUT THE EXPRESSED WRITTEN PERMISSION OF ATRIUM COMPANIES, INC.

ATRIUM
COMPANIES, INC.

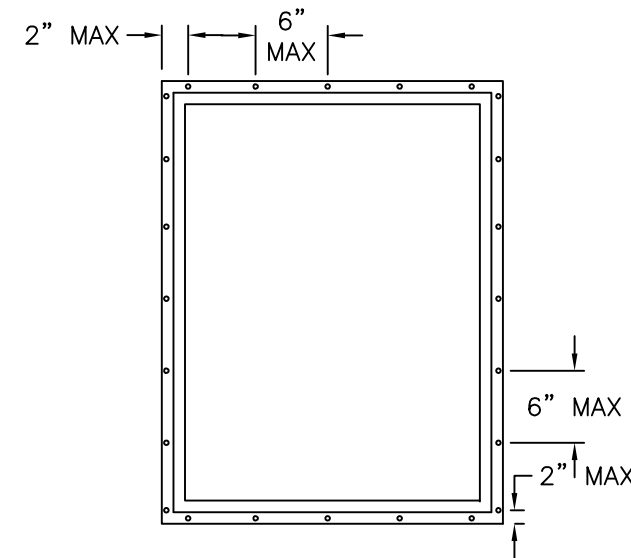
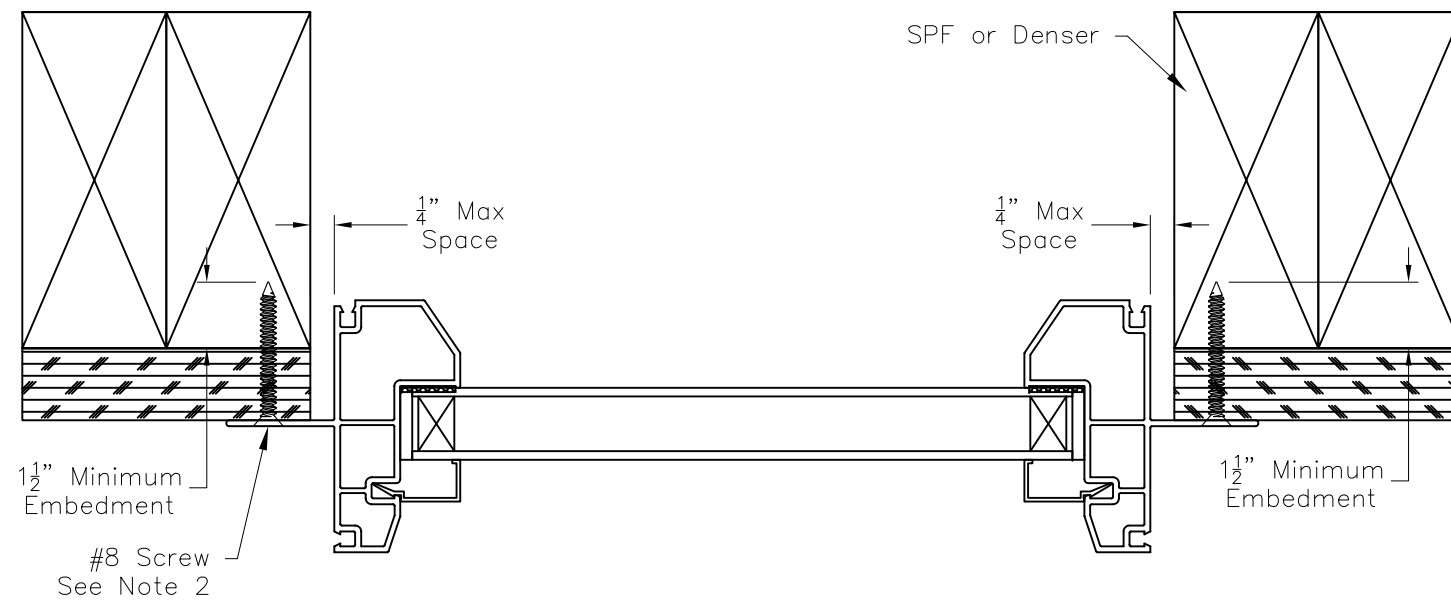
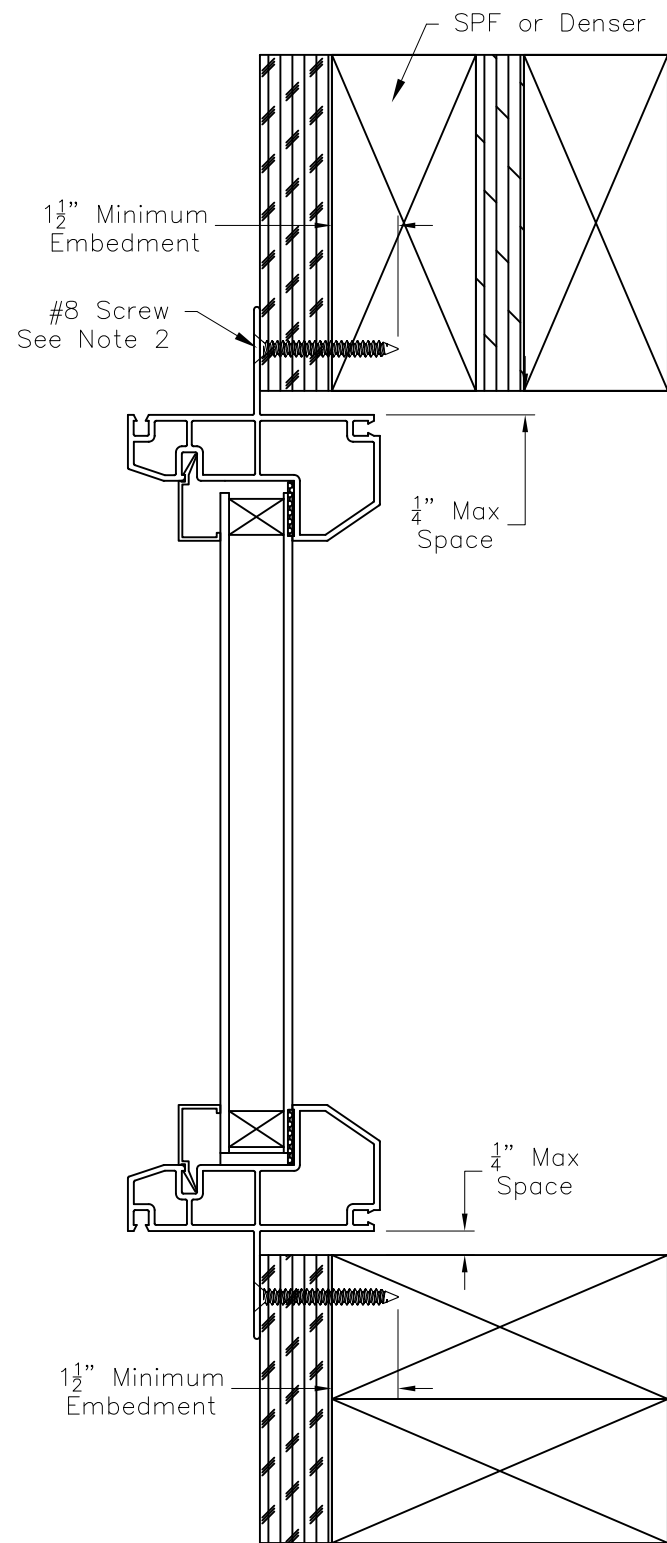
Title: Atrium Series 5700 Picture Window Fin Nail Installation Drawing

No.	Date	Revision Description	By	ECN #
1	1-12-07	Glass deduct changed from 0.812 to 0.875.	JPP	2007-1072
2	2-27-09	Added 3/4" OA IG detail.	DJC	2009-1536
3	3-2-10	Updated CAD format and corrected profile geometry. Updated glass size to match production. Completely redraw drawing.	CRA	2009-1690

Material (Type-Alloy-Temper):	Est. Area (in ²): NA	Tolerances: X.XX = ±X.XX
-----	Est. Weight (lb/ft): NA	X.XXX = ±X.XXX
		X.X' = ±X.X'

Drawn By: RI	Approved By: DEH	Date: 2-24-2006	Scale: 1:2	Sheet Size: ANSI B
ECN# (Initial Issue): Not Issued	File Name: ADW-01 5700 8050 PW ASSY			Sheet 3/5

Table 1 – Verified Installations		
DP (psf)	Width (in)	Height (in)
+/- 50.0	82	72
+/- 50.0	48	84



Elevation View

NOTES:

- INSTALLATIONS SHOWN ON THIS DRAWING HAVE BEEN VERIFIED AS THE AS-TESTED INSTALLATION FOR THE PERFORMANCE LEVEL SHOWN. VERIFIED PRODUCTS ARE LISTED IN TABLE 1. THIS DRAWING APPLIES ONLY TO THOSE PRODUCTS.
- INSTALLATION ANCHORS SHALL BE #8 SCREWS OF SUFFICIENT LENGTH TO ACHIEVE MINIMUM EMBEDMENT OF 1-1/2" INTO WOOD FRAMING MEMBER. SCREWS SHALL SATISFY NATIONAL DESIGN SPECIFICATION FOR MATERIAL PROPERTIES AND DIMENSIONS. PER NDS-2005 11.1.4.7, EDGE DISTANCES SHALL BE SUFFICIENT TO PREVENT SPLITTING.
- WOOD FRAMING SHALL BE SPRUCE-PINE-FIR (G=0.42) OR DENSER.
- INSTALLATION ANCHORS SHALL BE LOCATED WITHIN 1/2" OF THE SPECIFIED LOCATION.
- MAXIMUM SHIM SPACE SHALL BE 1/4". SPACES GREATER THAN 1/16" REQUIRE LOAD BEARING SHIMS.
- INSTALLATION ANCHORS ARE SHOWN GOING THROUGH EXTERIOR FINISH. ANCHORS MAY BE INSTALLED DIRECTLY INTO WOOD FRAMING MEMBER WITH 1-1/2" MINIMUM EMBEDMENT STILL REQUIRED.
- INSTALLATION ANCHORS SHALL BE LOCATED 2" FROM CORNERS AND 8" MAXIMUM ON CENTER SPACING.
- THESE INSTRUCTIONS ADDRESS STRUCTURAL REQUIREMENTS ONLY. WINDOWS SHALL BE INSTALLED PER ASTM E2112 OR FMA/AAMA 100.
- SMALLER WINDOWS OF THE SAME CONSTRUCTION AND EQUAL OR LESSER DESIGN PRESSURES ARE COVERED BY THIS DRAWING.
- GLAZING TYPE, GLASS TYPE, AND GLASS THICKNESS ARE ESTABLISHED BY THE CERTIFICATION AND SHALL SATISFY ASTM E1300. GLAZING TYPE MAY BE INSULATING GLASS OR SINGLE PANE GLASS.
- PRODUCTS LISTED IN TABLE 1 ARE NOT IMPACT RESISTANT. IF USED IN WIND-BORNE DEBRIS REGIONS, APPROVED PROTECTION DEVICES ARE REQUIRED.
- PRODUCT OR INSTALLATION IS NOT APPROVED FOR HIGH VELOCITY HURRICANE ZONE (HVHZ)

THIS DRAWING IS PROPRIETARY AND CONFIDENTIAL TO ATRIUM COMPANIES, INC. AND SHALL NOT BE REPRODUCED, COPIED, OR DISSEMINATED WITHOUT THE EXPRESSED WRITTEN PERMISSION OF ATRIUM COMPANIES, INC.



Title: Atrium Series 5700 Picture Window Fin Installation Drawing

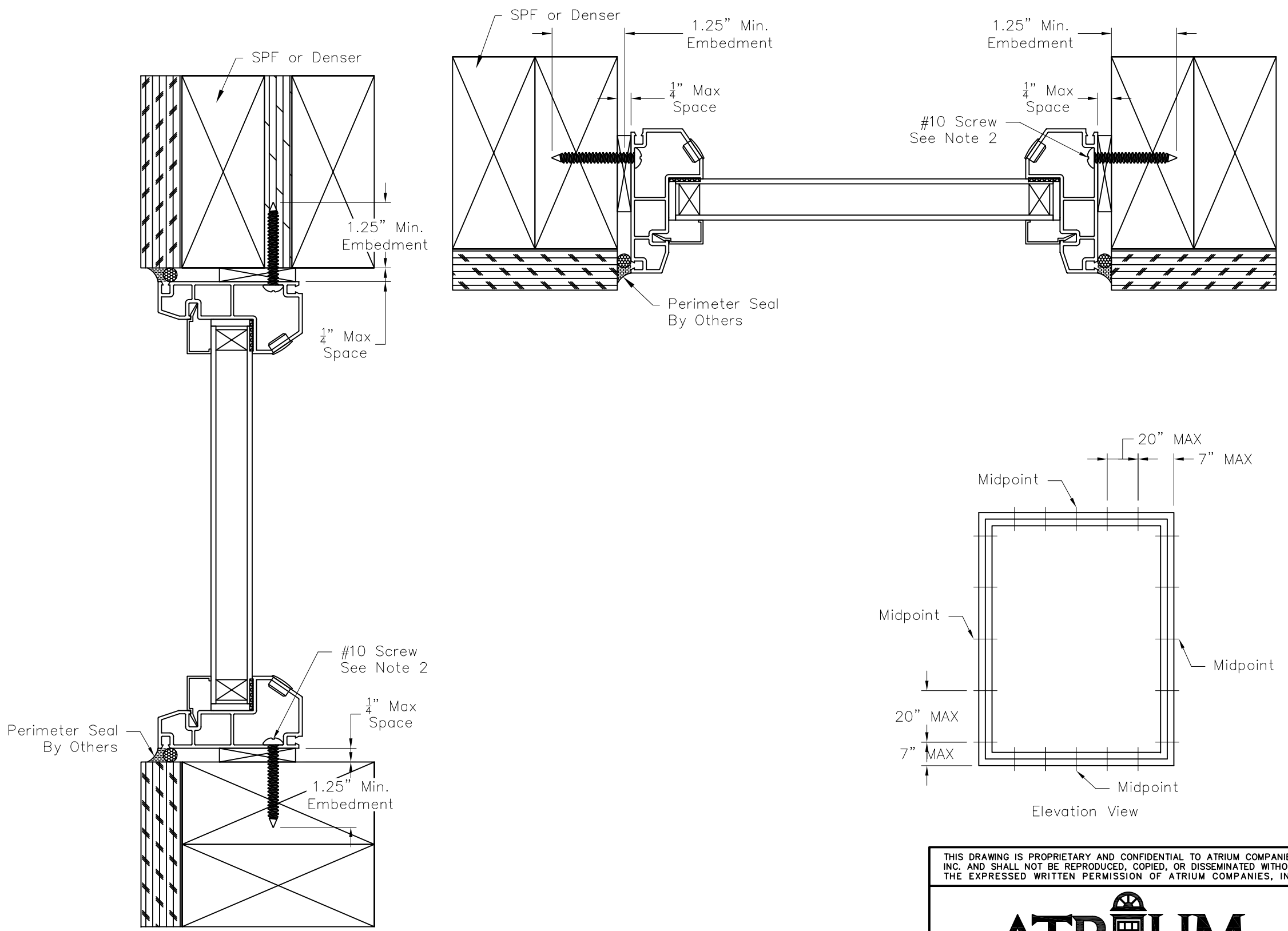
No.	Date	Revision Description	By	ECN #
1	1-12-07	Glass deduct changed from 0.812 to 0.875.	JPP	2007-1072
2	2-27-09	Added 3/4" OA IG detail.	DJC	2009-1536
3	3-2-10	Updated CAD format and corrected profile geometry. Updated glass size to match production. Completely redrew drawing.	CRA	2009-1690

Material (Type-Alloy-Temper):	Est. Area (in ²): NA	Tolerances: X.XX = ±X.XX
-----	Est. Weight (lb/ft): NA	X.XXX = ±X.XXX
		X.X' = ±X.X'

Drawn By: RI	Approved By: DEH	Date: 2-24-2006	Scale: 1:2	Sheet Size: ANSI B
ECN# (Initial Issue): Not Issued	File Name: ADW-01 5700 8050 PW ASSY			Sheet 3/5

Table 1 - Verified Installations

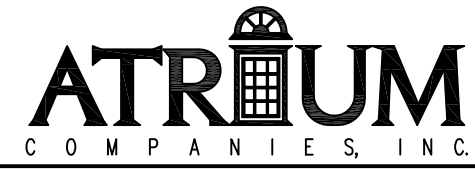
DP (psf)	WIDTH (in)	HEIGHT (in)
+/- 50.0	82	72
+/- 50.0	48	84



NOTES:

- INSTALLATIONS SHOWN ON THIS DRAWING HAVE BEEN VERIFIED AS THE AS-TESTED INSTALLATION FOR THE PERFORMANCE LEVEL SHOWN. INSTALLATION ANCHOR CAPACITY HAS ALSO BEEN VERIFIED FOR THE ANCHOR SIZE, SUBSTRATE AND INSTALLED CONDITION. VERIFIED PRODUCTS ARE LISTED IN TABLE 1. THIS DRAWING APPLIES ONLY TO THOSE PRODUCTS.
- INSTALLATION ANCHORS SHALL BE #10 SCREWS OF SUFFICIENT LENGTH TO ACHIEVE MINIMUM EMBEDMENT OF 1.25" INTO WOOD FRAMING MEMBER. WOOD SCREWS SHALL SATISFY NATIONAL DESIGN SPECIFICATION FOR MATERIAL PROPERTIES AND DIMENSIONS. PER NDS-2005 11.1.4.7, EDGE DISTANCES SHALL BE SUFFICIENT TO PREVENT SPLITTING.
- WOOD FRAMING SHALL BE SPRUCE-PINE-FIR (G=0.42) OR DENSER.
- INSTALLATION ANCHORS SHALL BE LOCATED AT THE MIDPOINT OF EACH MEMBER IN ADDITION TO BEING LOCATED 7" MAX FROM THE CORNERS AND 20" MAX ON-CENTER.
- ANCHORS SHALL BE LOCATED WITHIN 1/2" OF THE INDICATED LOCATION. SHIM AS REQUIRED AT EACH ANCHOR LOCATION WITH LOAD BEARING SHIMS. MAXIMUM ALLOWABLE SHIM SPACE IS 1/4".
- THESE INSTRUCTIONS ADDRESS STRUCTURAL REQUIREMENTS ONLY. WINDOWS SHALL BE INSTALLED PER ASTM E2112 OR FMA/AAMA 100.
- SMALLER WINDOWS OF THE SAME CONSTRUCTION AND EQUAL OR LESSER DESIGN PRESSURES ARE COVERED BY THIS DRAWING.
- GLAZING TYPE, GLASS TYPE, AND GLASS THICKNESS ARE ESTABLISHED BY THE CERTIFICATION AND SHALL SATISFY ASTM E1300. GLAZING TYPE SHALL BE INSULATING GLASS.
- PRODUCTS LISTED IN TABLE 1 ARE NOT IMPACT RESISTANT. IF USED IN WIND-BORNE DEBRIS REGION THEN APPROVED IMPACT PROTECTIVE SYSTEM IS REQUIRED.
- PRODUCT OR INSTALLATION IS NOT APPROVED FOR HIGH VELOCITY HURRICANE ZONE (HVHZ)

THIS DRAWING IS PROPRIETARY AND CONFIDENTIAL TO ATRIUM COMPANIES, INC. AND SHALL NOT BE REPRODUCED, COPIED, OR DISSEMINATED WITHOUT THE EXPRESSED WRITTEN PERMISSION OF ATRIUM COMPANIES, INC.



Title: Atrium Series 8050 Picture Window Finless Installation Drawing

No.	Date	Revision Description	By	ECN #
1	1-12-07	Glass deduct changed from 0.812 to 0.875.	JPP	2007-1072
2	2-27-09	Added 3" OA IG detail.	DJC	2009-1536
3	3-2-10	Updated CAD format and corrected profile geometry. Updated glass size to match production. Completely redraw drawing.	CRA	2009-1690

Material (Type-Alloy-Temper):	Est. Area (in ²): NA	Tolerances: X.XX = ±X.XX
-----	Est. Weight (lb/ft): NA	X.XXX = ±X.XXX
		X.X' = ±X.X'

Drawn By: RI	Approved By: DEH	Date: 2-24-2006	Scale: 1:2	Sheet Size: ANSI B
ECN# (Initial Issue): Not Issued	File Name: ADW-01 5700 8050 PW ASSY			Sheet 4/5