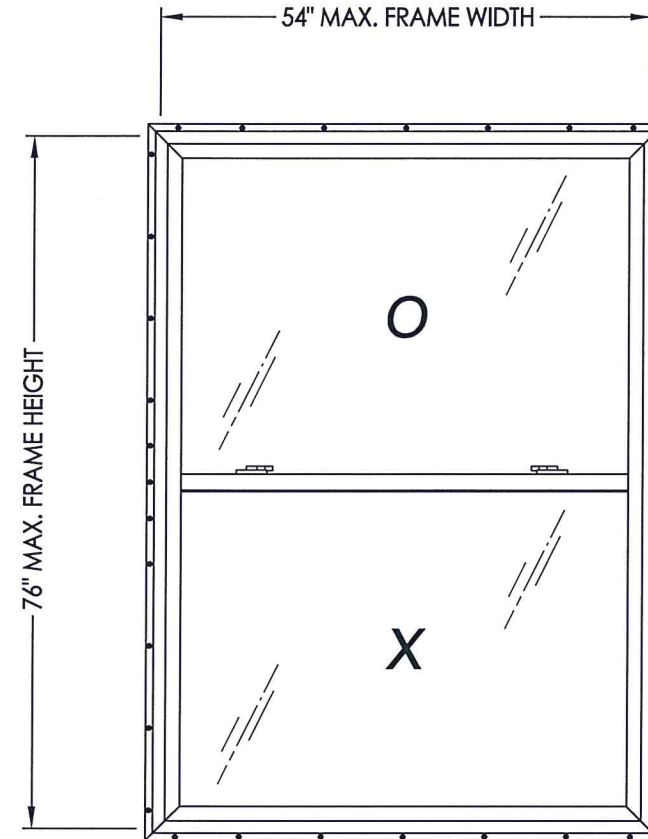


MODEL 3100
SINGLE HUNG WINDOW
w/ NAILING FIN
"IMPACT"



EVALUATED FOR USE IN THE STATE OF TEXAS

TDI WIN-680

The Single Hung Window described herein complies with the 2018 International Residential Code (IRC), Sections R301 & R609 and the 2018 International Building Code (IBC), Sections 1404.13, 1609, 1709.5, 2403 and 2404 subject to the following conditions:

1. Anchors shall be as listed and spaced as shown in the details. Anchor embedment to base material shall be beyond roof covering.
2. When used in areas requiring wind-borne debris protection, this product complies with Section R301.2.1.2 of the IRC and Section 1609.2 of the IBC and does not require impact protection. This product meets missile level "D" and includes Wind Zone 3 as defined in ASTM E 1996.
3. Allowable design pressure requirements must be equal to or less than the design pressure rating shown in the design pressure chart, sheet 1 of this drawing.
4. Conditions not covered by this drawing are subject to further engineering analysis.

TABLE OF CONTENTS	
SHEET#	DESCRIPTION
1	Typical elevations, design pressures & general notes
2	Vertical & horizontal cross sections & frame anchoring
3	Bill of materials, glazing details and components

OVERALL FRAME DIMENSION	OVERALL (O) D.L.O. DIMENSION	OVERALL (X) D.L.O. DIMENSION	GLASS TYPE	DESIGN PRESSURE (PSF)	
				POSITIVE	NEGATIVE
54.0" x 76.0"	48.87" x 33.87"	48.12" x 33.87"	G1	+50.0	-50.0



Documents Prepared By: Lyndon F. Schmidt, P.E.
TEXAS P.E. #104123

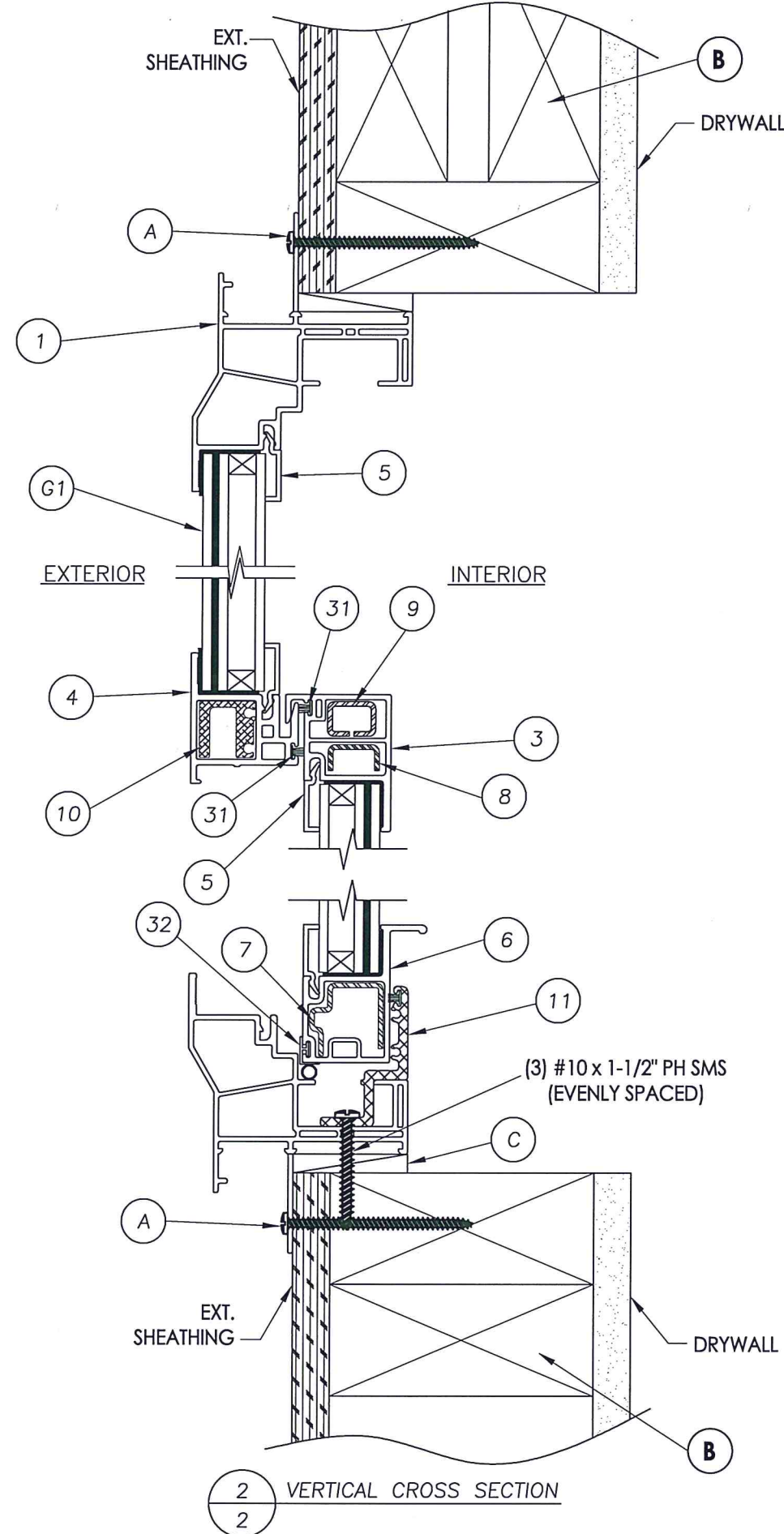
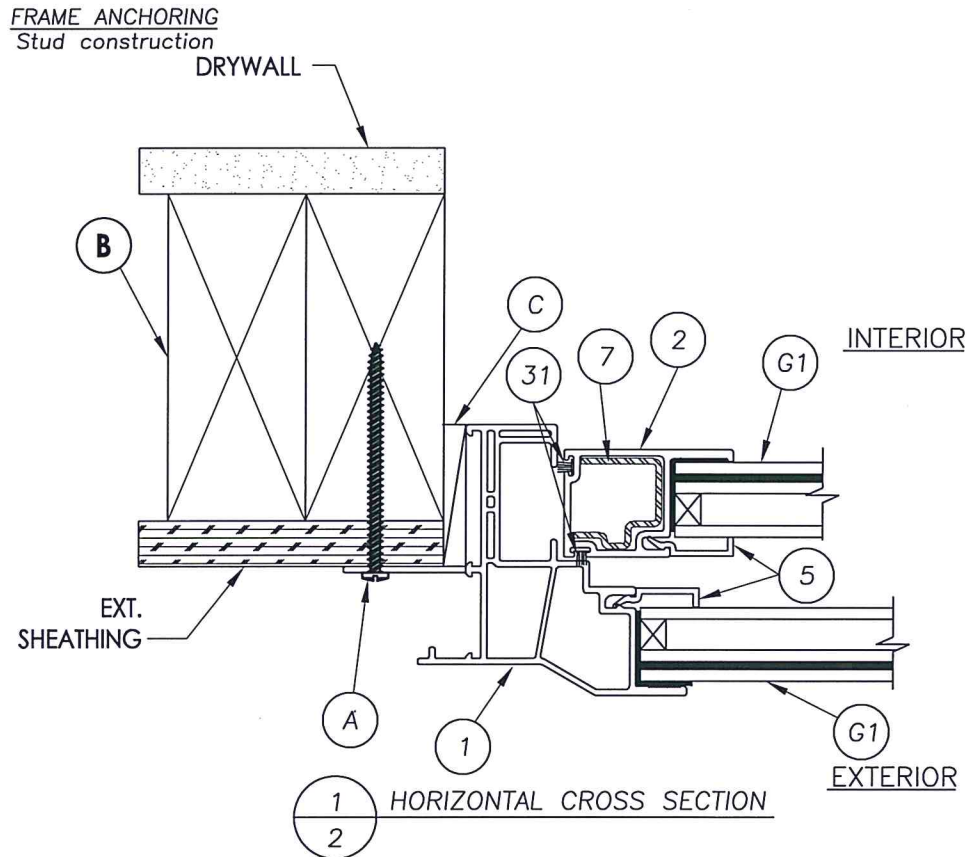
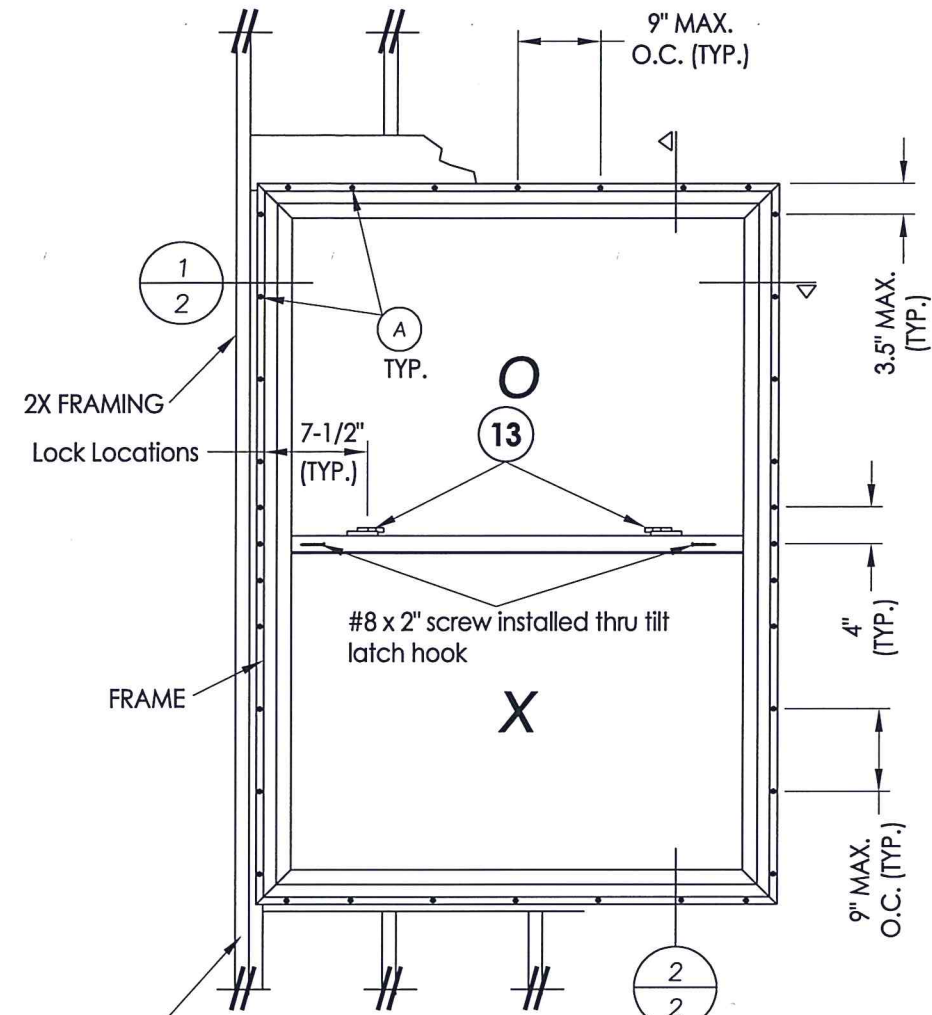
RW BUILDING CONSULTANTS, INC.
P.O. Box 230 Valrico FL 33595
Phone No.: 813.659.9197
TEXAS BOARD OF PROFESSIONAL ENGINEERS
CERTIFICATE OF REGISTRATION # F-11852

PRODUCT: SINGLE HUNG WINDOW
PART OR ASSEMBLY: TYPICAL ELEVATION, DESIGN PRESSURES & GENERAL NOTES

NO.	DATE	BY	REVISIONS

DATE: 6/09/20
SCALE: N.T.S.
DWG. BY: RW
CHK. BY: LFS
DRAWING NO.: TX-5060
SHEET 1 OF 3

R:\Clients\Associated PERMANENT\B - Texas Dept of Ins\Single Hung\WIN 680 - (SUB ID# 7145) Model 3100 IMP Single Hung\C - Drawings\TX-5059.5060.dwg, 2-2



Documents Prepared By: Lyndon F. Schmidt, P.E.
 TEXAS P.E. #104123

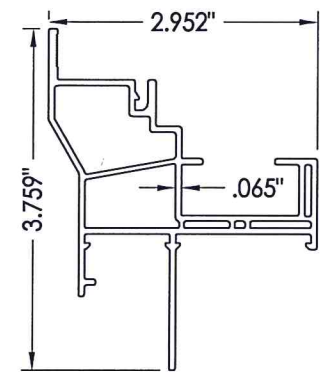
RW BUILDING CONSULTANTS, INC.
 P.O. Box 230 Valrico FL, 33595
 Phone No.: 813.659.9197

TEXAS BOARD OF PROFESSIONAL ENGINEERS
 CERTIFICATE OF REGISTRATION # F-11852

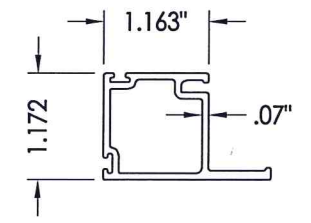
PRODUCT:	SINGLE HUNG WINDOW	
PART OR ASSEMBLY:	VERTICAL & HORIZONTAL CROSS SECTIONS & FRAME ANCHORING	
NO.	DATE	BY
		REVISIONS
DATE:	6/09/20	
SCALE:	N.T.S.	
DWG. BY:	RW	
CHK. BY:	LFS	
DRAWING NO.:	TX-5060	
SHEET	2	OF 3

BILL OF MATERIALS		
ITEM #	DESCRIPTION	MATERIAL
A	#8 X 2-1/2" PH WOOD SCREW (1-3/4" MIN. EMBEDMENT)	STEEL
B	2X FRAMING (G >= 0.42)	WOOD
C	1/4" MAX. SHIM SPACE	-
1	EXTRUDED VINYL HEAD, SILL & JAMB *	RIGID PVC
2	EXTRUDED VINYL STILE/RAIL SASH *	RIGID PVC
3	EXTRUDED VINYL SASH INTERLOCK *	RIGID PVC
4	EXTRUDED VINYL FIXED INTERLOCK *	RIGID PVC
5	EXTRUDED VINYL GLAZING BEAD *	RIGID PVC
6	EXTRUDED VINYL PULL RAIL *	RIGID PVC
8	SASH INTERLOCK REINFORCEMENT	STEEL
9	SASH INTERLOCK REINFORCEMENT	STEEL
10	KEEPER RAIL REINFORCEMENT	ALUM
11	SILL INSERT REINFORCEMENT	ALUM
12	SASH REINFORCEMENT	STEEL
13	SWEEP LATCH & KEEPER (TRUTH)	METAL
31	WEATHER PILE	STEEL
32	FOAM BULB SEAL	STEEL

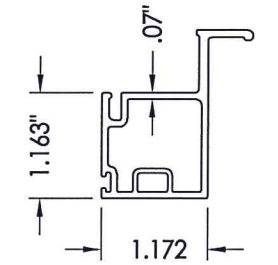
* THE APPROVED WHITE RIGID PVC EXTERIOR EXTRUSIONS FOR WINDOWS ARE TO BE PRODUCED BY EXTRUDERS LICENSEES IN "AAMA CERTIFICATION PROGRAMS FOR RIGID PVC EXTRUSIONS".



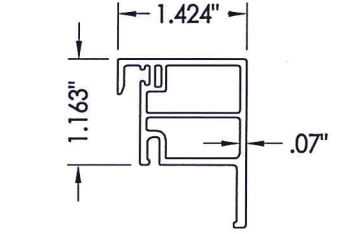
1 HEAD / SILL / JAMB



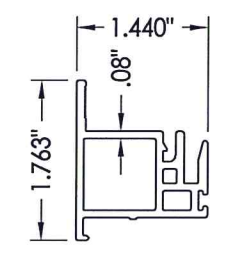
2 STILE / RAIL



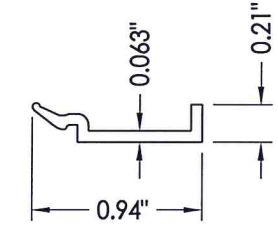
6 PULL RAIL



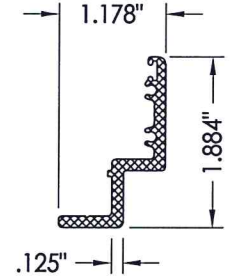
3 SASH INTERLOCK



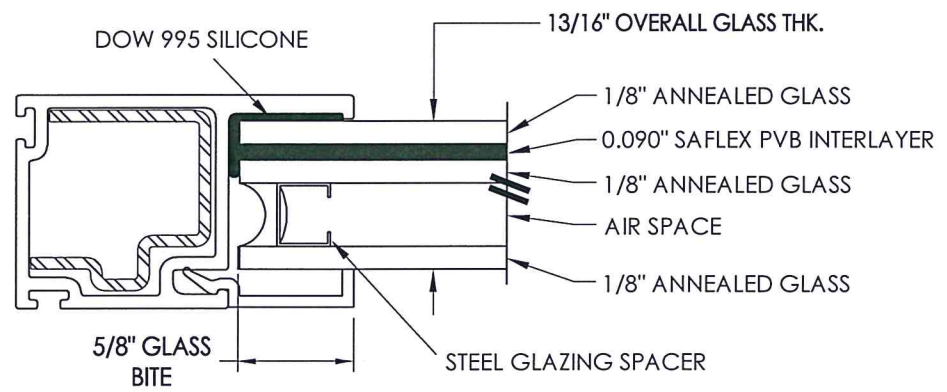
4 FIXED INTERLOCK



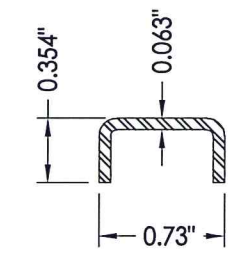
5 GLAZING BEAD



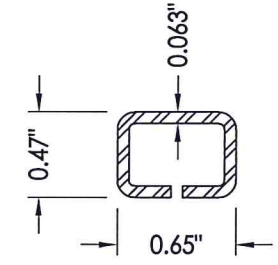
11 SILL INSERT



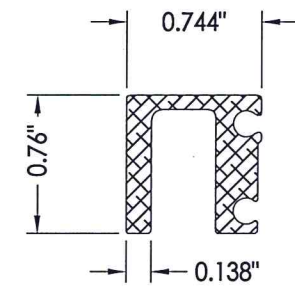
G1 GLAZING DETAIL



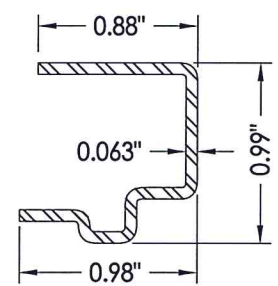
8 REINFORCEMENT



9 REINFORCEMENT



10 REINFORCEMENT



7 REINFORCEMENT



Documents Prepared By: Lyndon F. Schmidt, P.E.
TEXAS P.E. #104123

RW BUILDING CONSULTANTS, INC.
P.O. Box 230 Vairico FL 33595
Phone No.: 813.659.9197
TEXAS BOARD OF PROFESSIONAL ENGINEERS
CERTIFICATE OF REGISTRATION # F-11852

PRODUCT: SINGLE HUNG WINDOW
PART OR ASSEMBLY: BILL OF MATERIALS, COMPONENTS AND GLAZING DETAIL

NO.	DATE	BY	REVISIONS

DATE: 6/09/20
SCALE: N.T.S.
DWG. BY: RW
CHK. BY: LFS
DRAWING NO.: TX-5060
SHEET 3 OF 3