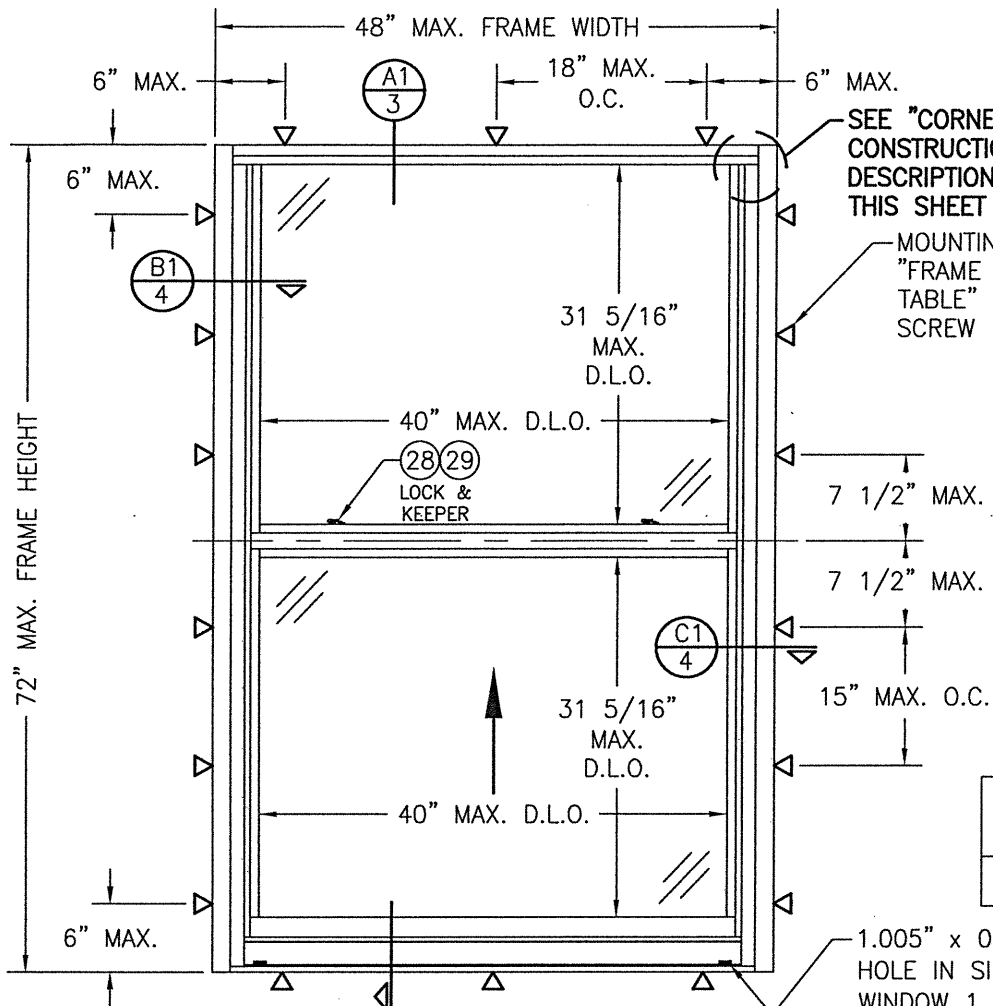


THESE DRAWINGS ARE APPLICABLE ONLY TO THE PRODUCT SPECIFIED. THEY MAY NOT BE USED FOR THE ASSEMBLY AND/OR INSTALLATION OF ANY OTHER PRODUCT NOR MAY THEY BE USED FOR RATIONAL AND/OR LOCAL APPROVAL OF ANY PRODUCT NOT PRODUCED BY THE MANUFACTURER STATED ON THESE DRAWINGS.



EXTERIOR ELEVATION
SINGLE HUNG WINDOW ANCHORED WITH MOUNTING CLIPS
 (NO RECEPTOR)
 SCALE: 3/4"=1'-0"

EVALUATION OF THIS PRODUCT IS BASED ON APPLICABLE STANDARDS AND/OR INFORMATION & RESULTS FROM APPLICABLE TEST REPORTS. THE BUILDING CODE VERSION CONSIDERED WITH THIS EVALUATION WAS THAT IN FORCE AT THE TIME OF THE EVALUATION. IN THE EVENT OF CODE VERSION CHANGES/UPDATES OR IN THE EVENT THAT NEW OR ADDITIONAL TESTING IS COMPLETED ON THIS PRODUCT, PRIOR TO STATING CODE COMPLIANCE, THE MANUFACTURER SHALL CONFIRM WITH THE EVALUATION ENGINEER OF RECORD THAT EVERYTHING SPECIFIED HERE-IN IS CURRENT WITH ALL CURRENT TESTING, CODES AND APPLICABLE STANDARDS.

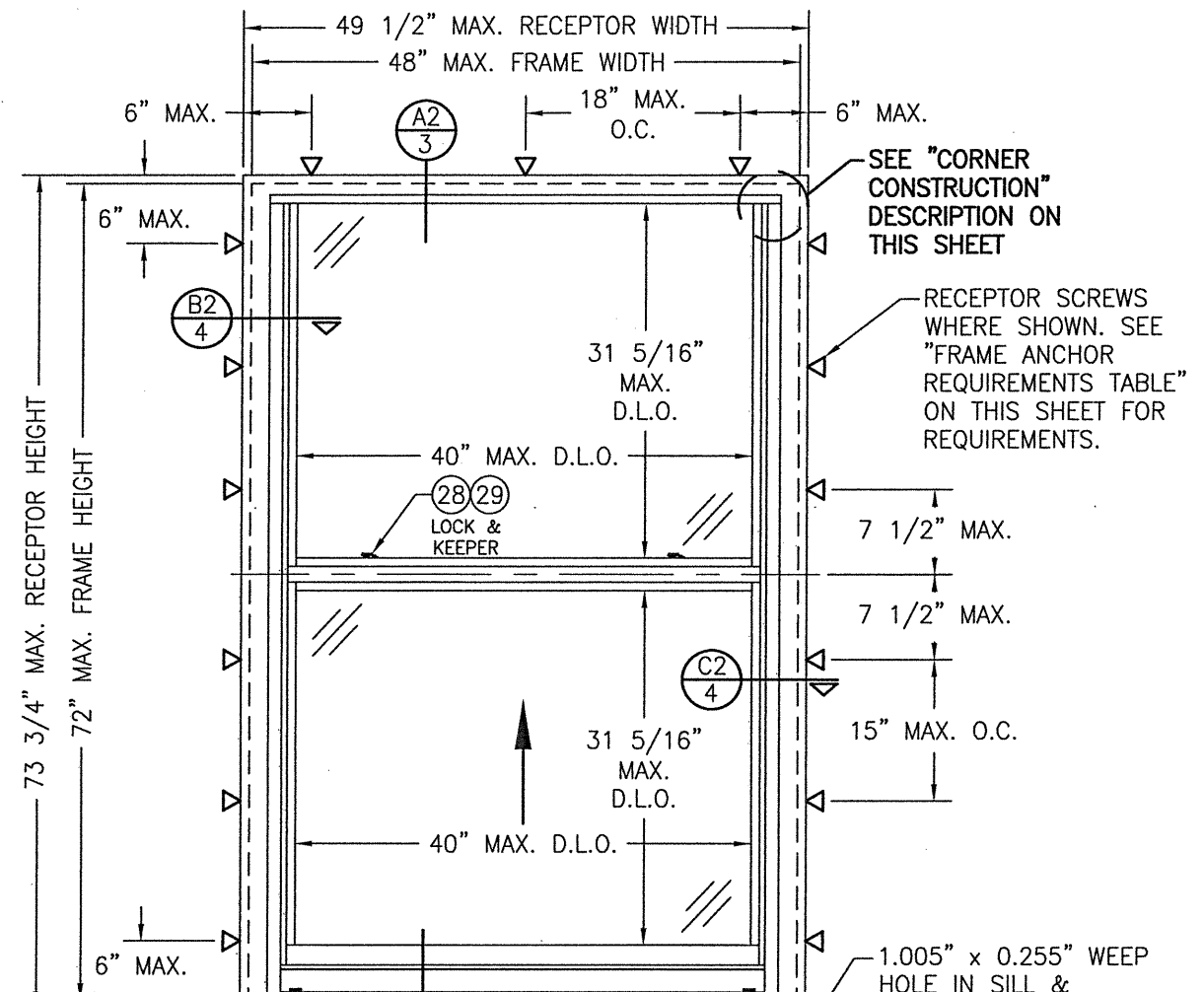
| |
|---|
| ALLOWABLE DESIGN PRESSURE (ALL WINDOWS) |
| +/-90 PSF |

GENERAL NOTES:

1. THIS PRODUCT HAS BEEN TESTED, ANALYZED & APPROVED FOR DESIGN PRESSURES NOT TO EXCEED THOSE SHOWN IN THE "ALLOWABLE DESIGN PRESSURE TABLE(S)".
2. OPENINGS, BUCKING & BUCKING FASTENERS MUST BE PROPERLY DESIGNED & INSTALLED TO TRANSFER WIND LOADS TO THE STRUCTURE.
3. ALL HARDWARE & FASTENERS SHALL BE IN ACCORDANCE WITH THESE DRAWINGS & SHALL NOT VARY UNLESS SPECIFICALLY MENTIONED ON THE DRAWINGS. SPECIFIED ANCHOR EMBED TO BASE MATERIAL SHALL BE BEYOND WALL FINISH OR STUCCO.
4. THE DETAILS & SPECIFICATIONS SHOWN HEREIN REPRESENT THE PRODUCTS TESTED & PROPOSED FOR WATER, AIR, IMPACT, CYCLIC & UNIFORM STATIC AIR PRESSURE TESTING IN CONFORMANCE WITH 2018 IBC REFERENCED STANDARDS ASTM E330, E283, E331, F588, E1886 & E1996 FOR LARGE & SMALL MISSILE IMPACT PRODUCTS. ALL TESTING OF THIS PRODUCT TO STANDARDS LESS CURRENT THAN THOSE SPECIFIED IN THE 2018 IBC HAS BEEN DETERMINED EQUIVALENT TO THE MORE CURRENT VERSIONS OF THOSE STANDARDS REFERENCED IN THE 2018 IBC.
5. THIS PRODUCT HAS BEEN DESIGNED IN ACCORDANCE WITH AND MEET THE REQUIREMENTS OF THE 2018 INTERNATIONAL BUILDING CODE (IBC).
6. WHEN GLAZED FOR SMALL MISSILE IMPACT, THIS PRODUCT MAY NOT BE INSTALLED AT ELEVATIONS BELOW 30 FT. ABOVE GRADE OR AT ANY CODE DESIGNATED LARGE MISSILE IMPACT LOCATION WITHOUT AN APPROVED SHUTTER.
7. IMPACT SHUTTERS ARE NOT REQUIRED WITH THIS PRODUCT.
8. ALL ANCHORS SECURING PRODUCT FRAMES TO PRESSURE TREATED BUCKS OR WOOD FRAMING SHALL BE CAPABLE OF RESISTING CORROSION CAUSED BY THE PRESSURE TREATING CHEMICALS IN THE WOOD.
9. DETERMINE THE POSITIVE & NEGATIVE DESIGN LOADS TO USE WHEN REFERENCING THESE DOCUMENTS IN ACCORDANCE WITH THE GOVERNING CODE AND GOVERNING WIND VELOCITY. FOR WIND LOAD CALCULATIONS IN ACCORDANCE WITH THE INTERNATIONAL BUILDING CODE, A DIRECTIONALITY FACTOR OF KD = 0.85 MAY BE APPLIED PER THE ASCE-7 STANDARD.
10. MATERIALS, INCLUDING BUT NOT LIMITED TO STEEL SCREWS, THAT COME INTO CONTACT WITH OTHER DISSIMILAR MATERIALS SHALL BE SEPARATED OR COATED AS REQUIRED TO AVOID CORROSION OF EITHER MATERIAL.
11. TO THE BEST OF OUR KNOWLEDGE, THE PRODUCT SHOWN HEREIN ARE QUALITY ASSURED BY AN APPROVED CERTIFICATION/QA ENTITY & SHALL BE LABELED IN ACCORDANCE WITH APPLICABLE STANDARDS. THESE DRAWINGS SHOW ALL APPLICABLE ELEVATION, COMBINATION, INSTALLATION & COMPARATIVE ANALYSIS CONDITIONS AS DETERMINED THROUGH TESTING & ENGINEERING RATIONAL ANALYSIS. PRODUCT ASSEMBLY SHALL BE IN ACCORDANCE WITH THESE DRAWINGS, THE MANUFACTURER'S QUALITY ASSURANCE SPECIFICATIONS & TESTING REPORTS.
12. CERTIFICATION OF THIS PRODUCT SHALL BE CONSIDERED VOID IF THEY ARE INSTALLED WITHOUT A BUILDING PERMIT FROM THE APPLICABLE LOCAL BUILDING DEPARTMENT OR IF THEY ARE INSTALLED BY ANYONE OTHER THAN A LICENSED CONTRACTOR EXPERIENCED WITH INSTALLATIONS OF THIS TYPE OF PRODUCT.

SEE "CORNER CONSTRUCTION" DESCRIPTION ON THIS SHEET

MOUNTING CLIP WHERE SHOWN. SEE "FRAME ANCHOR REQUIREMENTS TABLE" ON THIS SHEET FOR CLIP SCREW REQUIREMENTS.



EXTERIOR ELEVATION
SINGLE HUNG WINDOW ANCHORED WITH RECEPTOR
 SCALE: 3/4"=1'-0"

SEE "CORNER CONSTRUCTION" DESCRIPTION ON THIS SHEET

RECEPTOR SCREWS WHERE SHOWN. SEE "FRAME ANCHOR REQUIREMENTS TABLE" ON THIS SHEET FOR REQUIREMENTS.

JAMB CORNERS:

COPED, SECURED WITH TWO (2) NO. 8 X 1 1/4" S.S. SCREWS PER CORNER AND SEALED WITH TREMCO-TREMSIL 600 SEALANT.

SASH CORNERS:

COPED, SECURED WITH TWO (2) NO. 8 X 1 1/4" S.S. SCREWS PER CORNER AND SEALED WITH TREMCO-TREMSIL 600 SEALANT.

LOCK REQUIREMENTS

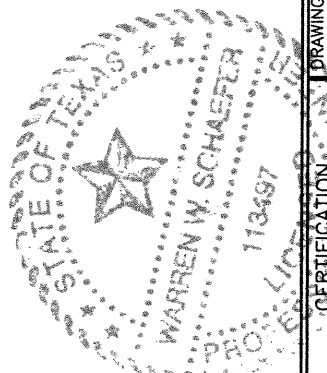
| MAX. FRAME WIDTH | NO. OF LOCKS REQUIRED |
|------------------|-----------------------|
| 48" | 2 |
| 24" | 1 |

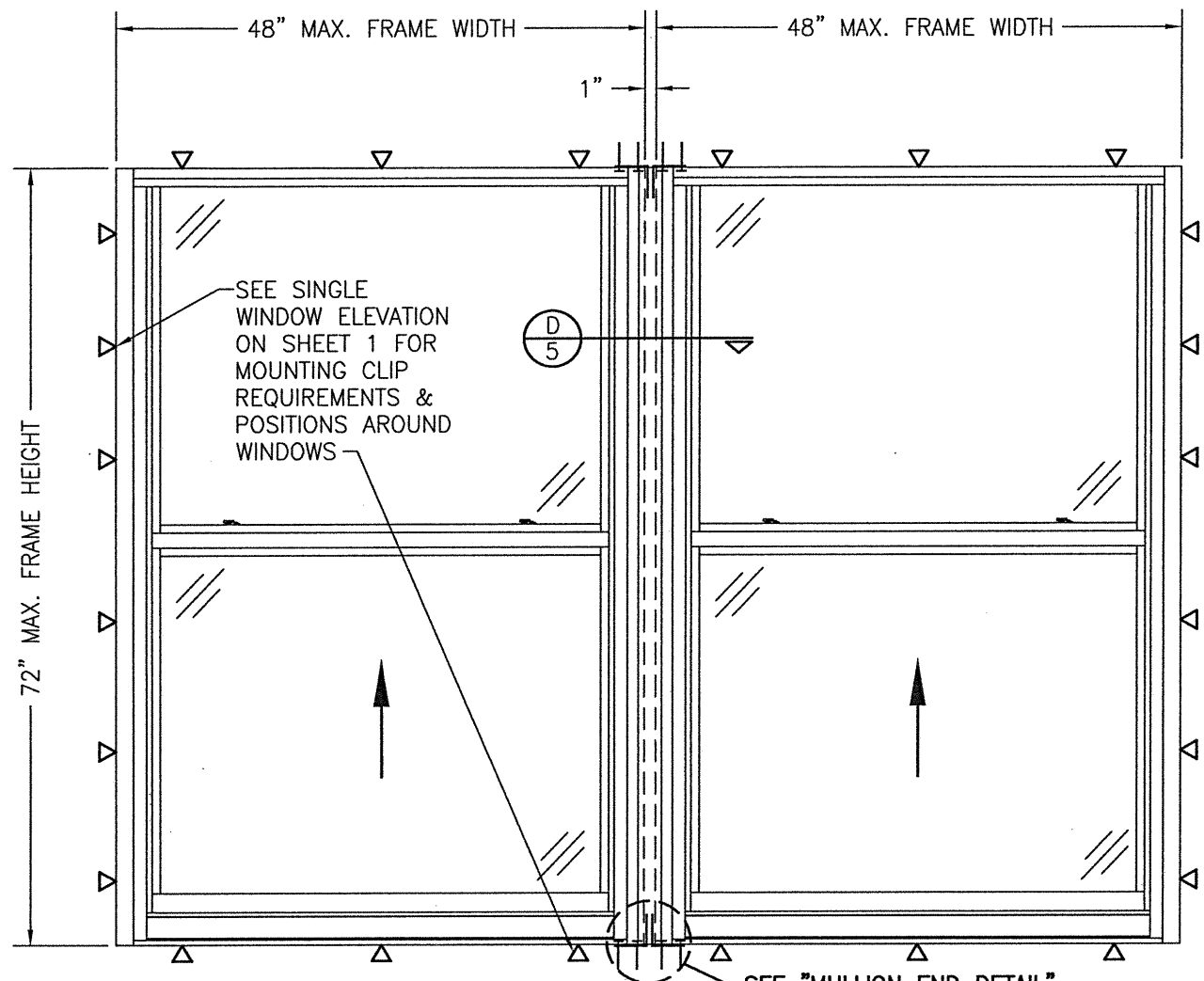
FRAME ANCHOR REQUIREMENTS TABLE

| RECEPTOR & MOUNTING CLIP SCREWS | | | |
|---|-------------------------------------|---------------|--------------------|
| OPENING TYPE (SUBSTRATE) | FRAME/CLIP TO OPENING FASTENER TYPE | MINIMUM EMBED | MINIMUM EDGE DIST. |
| MIN. 2X4 WOOD FRAME OR BUCK (MIN. GR. 3 & G=0.55) | NO. 12 SMS OR WOOD SCREW | 1 1/4" | 1" |
| MIN. 18 GA. 33 KSI METAL STUD | NO. 12 GR. 5 SELF TAP/DRILL SCREW | FULL | 1/2" |
| MIN. 1/8" THK A36 STEEL | NO. 12 GR. 5 SELF TAP/DRILL SCREW | FULL | 1/2" |
| MIN. 0.10" THK 6063-T5 ALUM. | NO. 12 GR. 5 SELF TAP/DRILL SCREW | FULL | 1/2" |
| MIN. C-90 CMU | (1) 1/4" CONCRETE SCREW | 1 1/4" | 2" |
| MIN. 2500 PSI CONCRETE | (1) 1/4" CONCRETE SCREW | 1 1/2" | 2" |

(1) CONCRETE SCREWS SHALL BE ELCO ULTRACONS (C.S.), ELCO CRETE-FLEX (S.S.), ITW RAMSET/RED HEAD TAPCONS (C.S. OR S.S.) OR HILTI KWIK-CON II (C.S. OR S.S.).

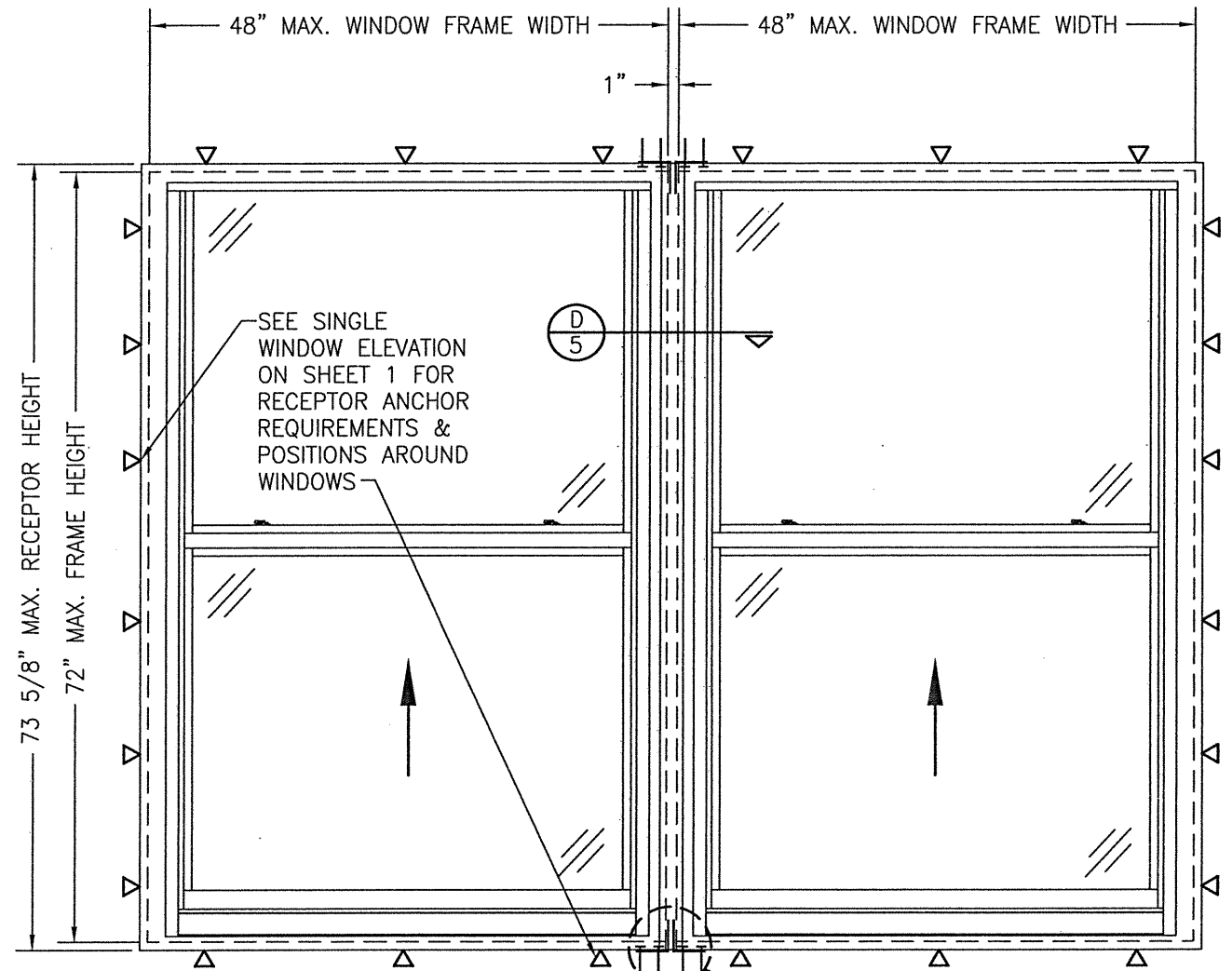
| | |
|--|-----------------------|
| DRAWN BY: W.W.S. | CHECKED BY: W.W.S. |
| PLOT: 1-16 | DATE: 03/04/21 |
| DATE | BY |
| REVISION DESCRIPTION | NO. |
| JOB INFORMATION: 8430TL SINGLE HUNG WINDOW (SMALL & LARGE MISSILE IMPACT) | |
| KAWNEER COMPANY, INC. 555 GUTHRIDGE COURT NORCROSS, GA 30092 770-449-5555 | |
| CONSULTANTS: W. W. SCHAEFER ENGINEERING & CONSULTING, P.A. (REG. NO. F-14980) 7480 150TH COURT NORTH PALM BEACH GARDENS, FL 33418 PHONE: 561-744-3424 | |
| DRAWING TITLE: 8430TL SINGLE HUNG WINDOW (SMALL & LARGE MISSILE IMPACT) | |
| DATE: MAR 04 2021 | |
| DRAWING NO. 1897T | |
| SHEET NO. 1 OF 6 | |





EXTERIOR ELEVATION
MULTIPLE WINDOWS ANCHORED WITH MOUNTING CLIPS
(NO RECEPTOR)

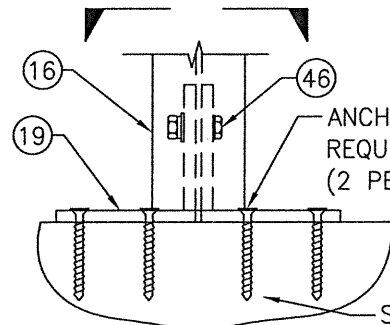
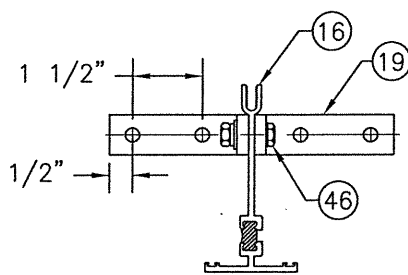
SCALE: 3/4"=1'-0"
 FOR WINDOW INFORMATION NOT SHOWN, SEE SINGLE WINDOW ELEVATION ON SHEET 1.



EXTERIOR ELEVATION
MULTIPLE WINDOWS ANCHORED WITH RECEPTOR

SCALE: 3/4"=1'-0"
 FOR WINDOW INFORMATION NOT SHOWN, SEE SINGLE WINDOW ELEVATION ON SHEET 1.

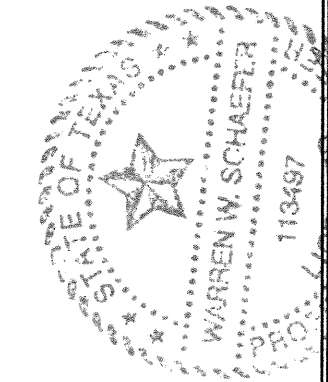
- MULTIPLE UNIT NOTES:**
1. FOR ALL DETAIL NOT SHOWN, SEE SINGLE WINDOW ELEVATION.
 2. THERE IS NO LIMIT ON THE NUMBER OF WINDOWS THAT MAY BE COMBINED HORIZONTALLY INTO ONE OPENING PROVIDING THE OPENING IS DESIGNED TO SUPPORT ALL LOADS TRANSFERRED FROM THE WINDOWS & THEIR MULLIONS.

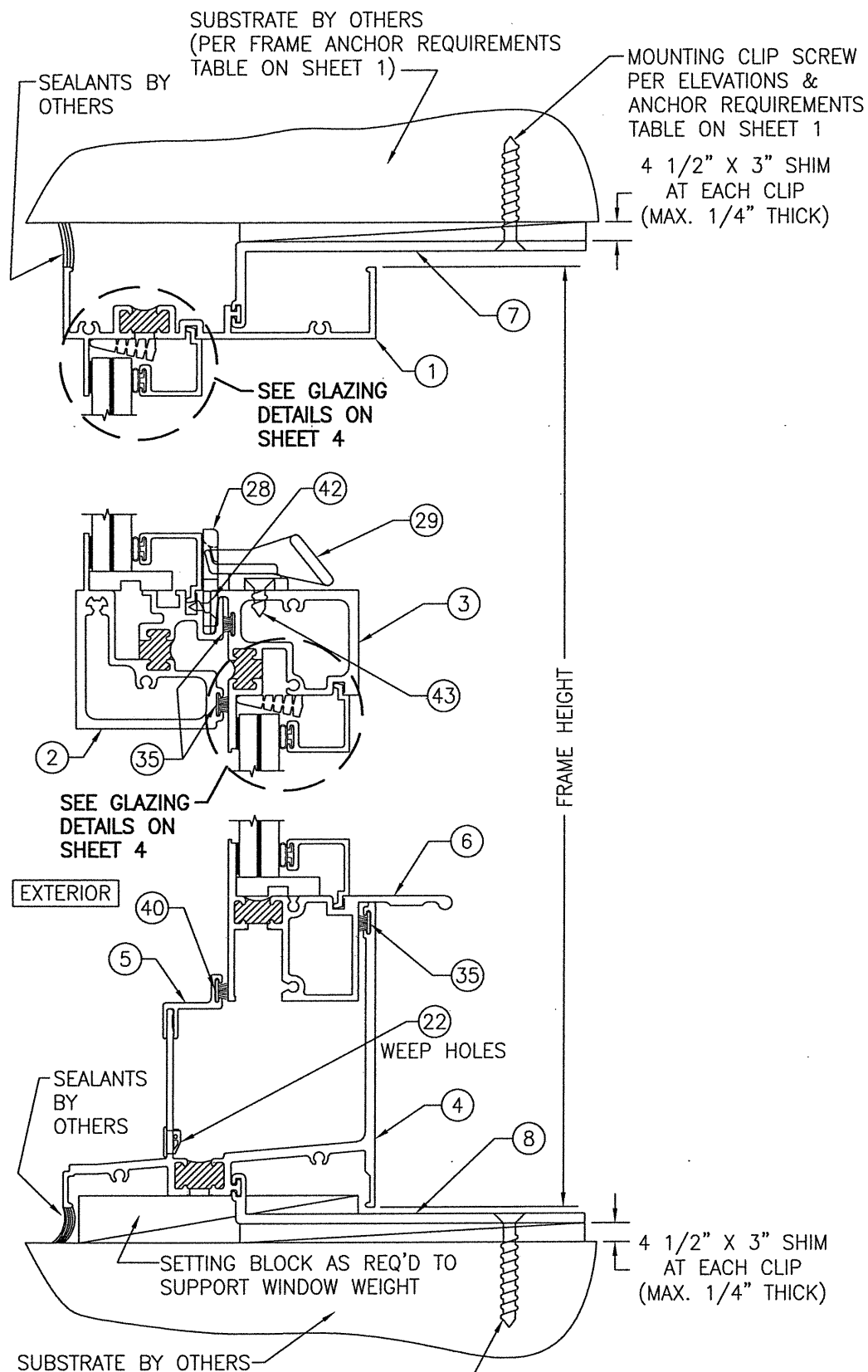


MULLION END DETAIL
 (WINDOW FRAMES NOT SHOWN FOR CLARITY)
 SCALE: N.T.S.

ANCHORS PER "FRAME ANCHOR REQUIREMENTS TABLE" ON SHEET 1
 (2 PER CLIP; 2 CLIPS)

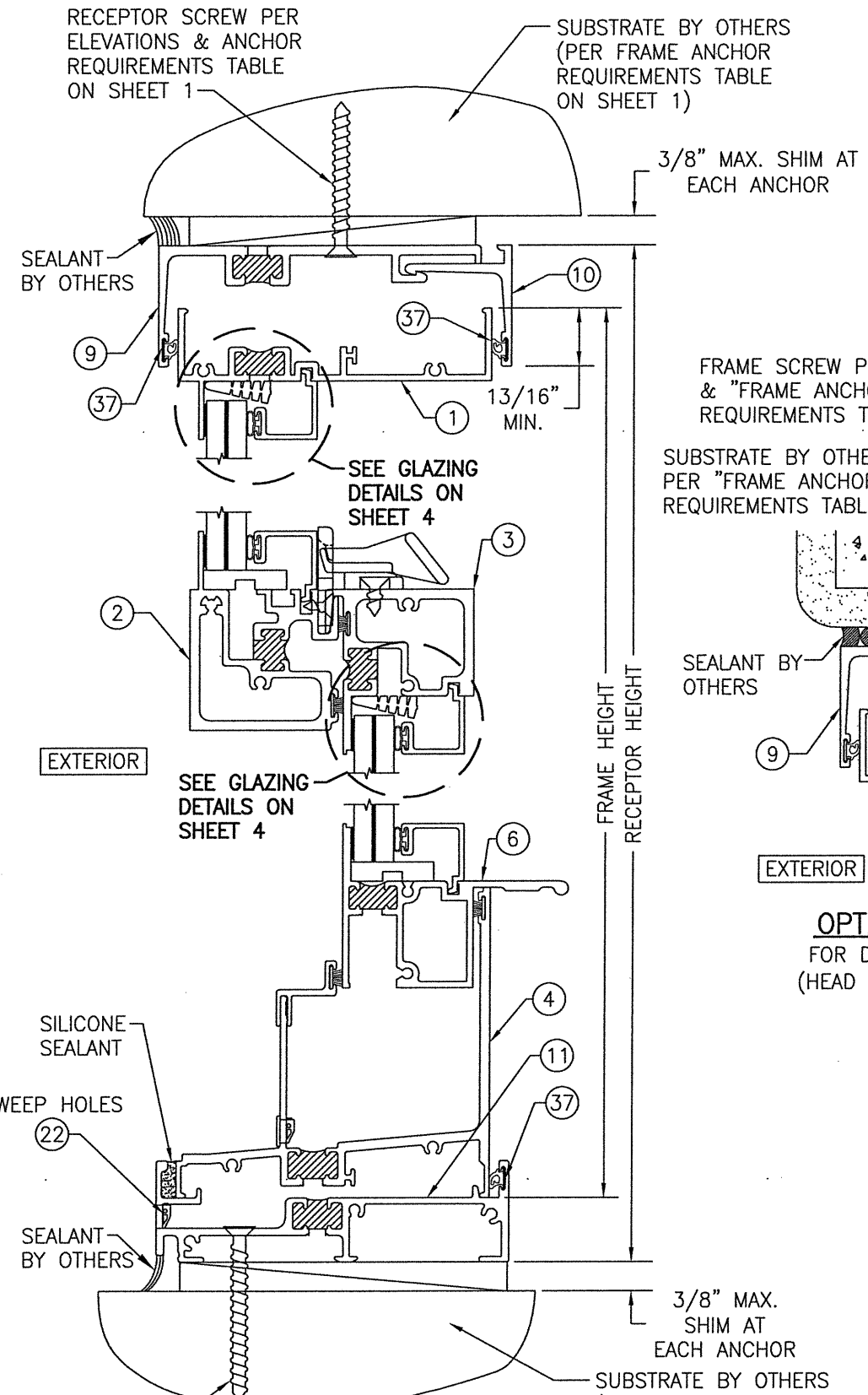
SUBSTRATE BY OTHERS PER FRAME ANCHOR REQUIREMENTS TABLE

| | |
|---|-----------------------|
| DRAWN BY: W.W.S. | CHECKED BY: W.W.S. |
| PLOT: 1=16 | DATE: 03/04/21 |
| DATE | |
| BY | |
| REVISION DESCRIPTION | |
| NO. | |
| DRAWING TITLE 84-30TL SINGLE HUNG WINDOW (SMALL & LARGE MISSILE IMPACT) | |
| JOB INFORMATION: KAWNEER COMPANY, INC. 555 GUTHRIDGE COURT NORCROSS, GA 30092 770-449-5555 | |
| CONSULTANTS W. W. SCHAEFER ENGINEERING & CONSULTING, P.A. (REG. NO. F-14980) 7480 150TH COURT NORTH PALM BEACH GARDENS, FL 33418 PHONE: 561-744-3424 | |
|  | |
| MAR 04 2021 WARREN W. SCHAEFER, P.E. P.E. NO. 113497 | |
| DRAWING NO. 1897T | REV. |
| SHEET NO. 2 | OF 6 |



SECTION A1
SCALE: 1/2 FULL

MOUNTING CLIP SCREW PER ELEVATIONS & ANCHOR REQUIREMENTS TABLE ON SHEET 1



SECTION A2
SCALE: 1/2 FULL

RECEPTOR SCREW PER ELEVATIONS & ANCHOR REQUIREMENTS TABLE ON SHEET 1

SUBSTRATE BY OTHERS (PER FRAME ANCHOR REQUIREMENTS TABLE ON SHEET 1)

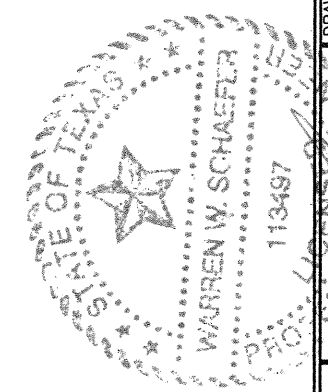
FOR DETAIL NOT SHOWN, SEE SECTION A1

FRAME SCREW PER ELEVATION & "FRAME ANCHOR REQUIREMENTS TABLE"

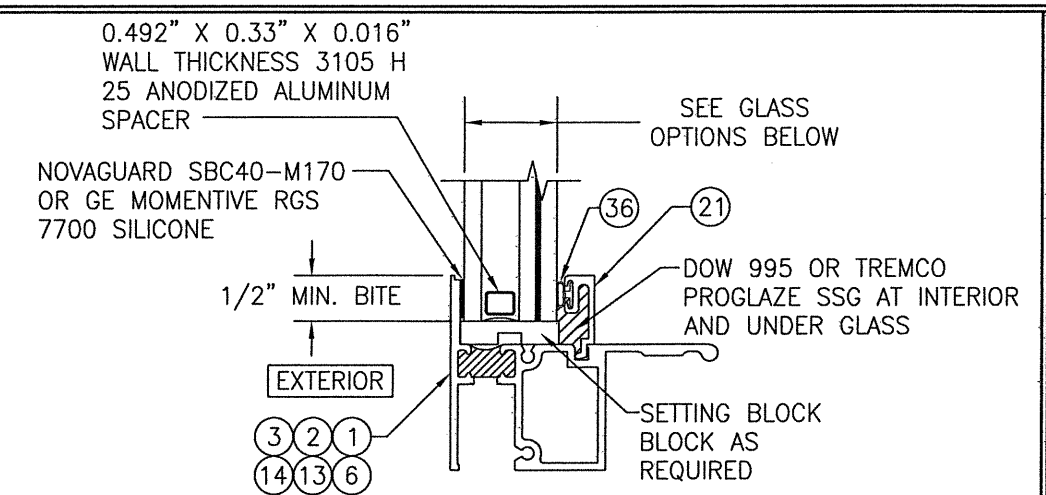
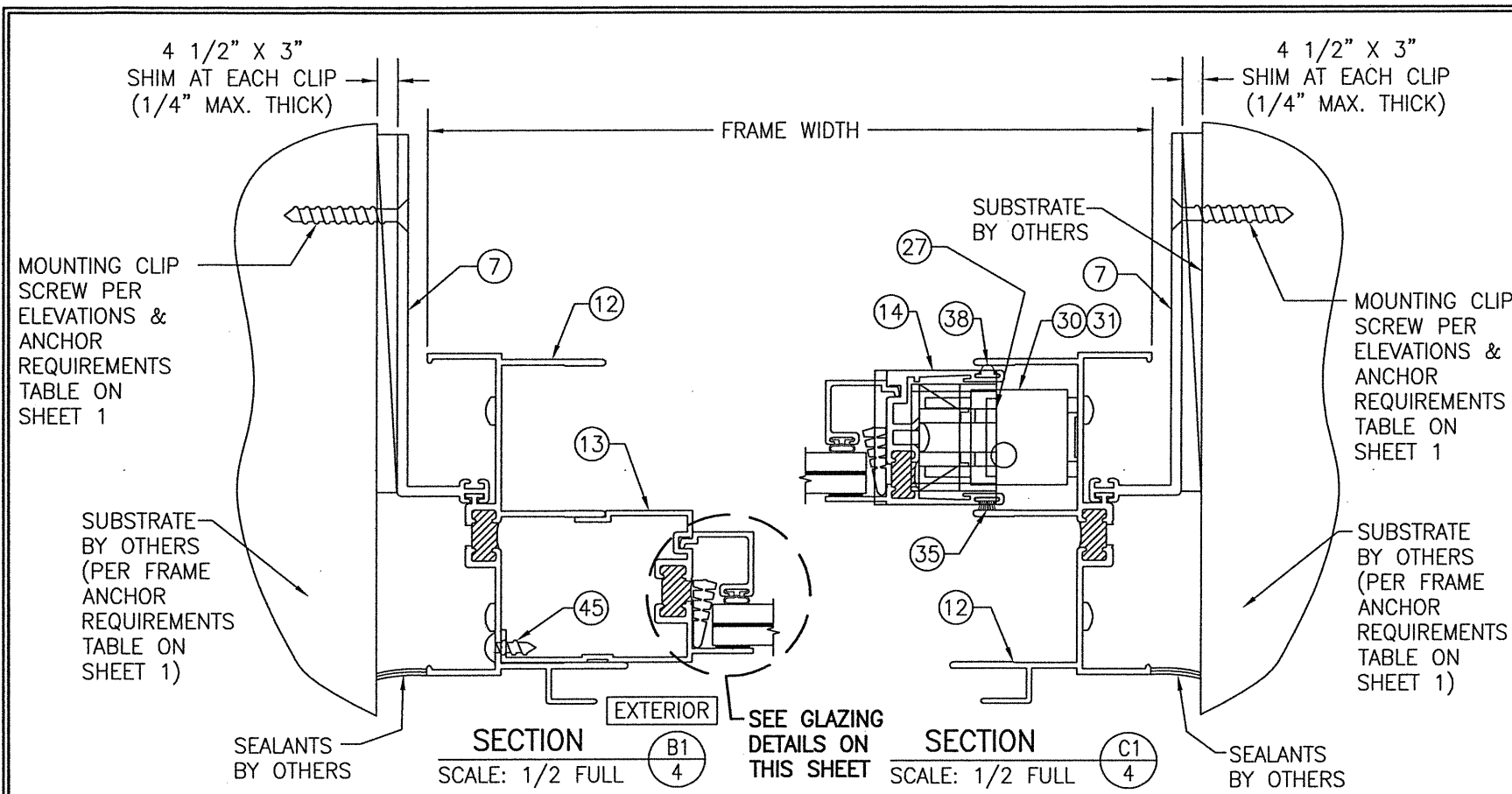
SUBSTRATE BY OTHERS PER "FRAME ANCHOR REQUIREMENTS TABLE"

CONTINUOUS WOOD MEMBER BY OTHERS LESS IN SIZE THAN A 2X BUCK TO BE MIN. 3 1/2" DEEP. NOT REQUIRED WHEN 3/8" OR LESS SHIM SPACE EXISTS (USE SHIMS AT EACH ANCHOR ONLY).

OPTIONAL DIRECT MOUNT DETAIL
FOR DETAIL NOT SHOWN, SEE OTHER SECTIONS (HEAD SECTION SHOWN, SIDES AND SILL SIMILAR)

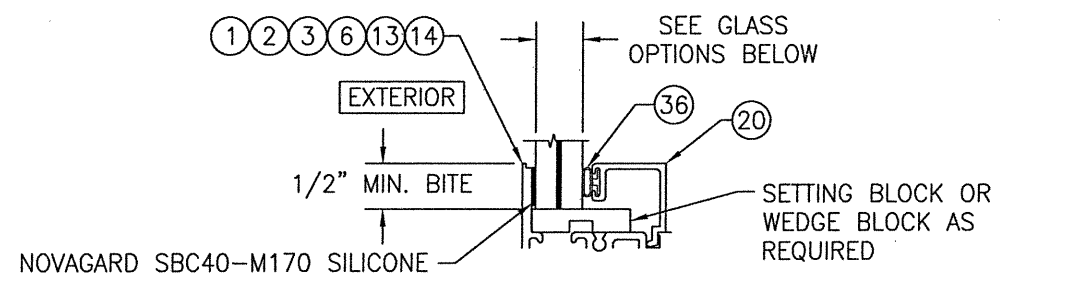
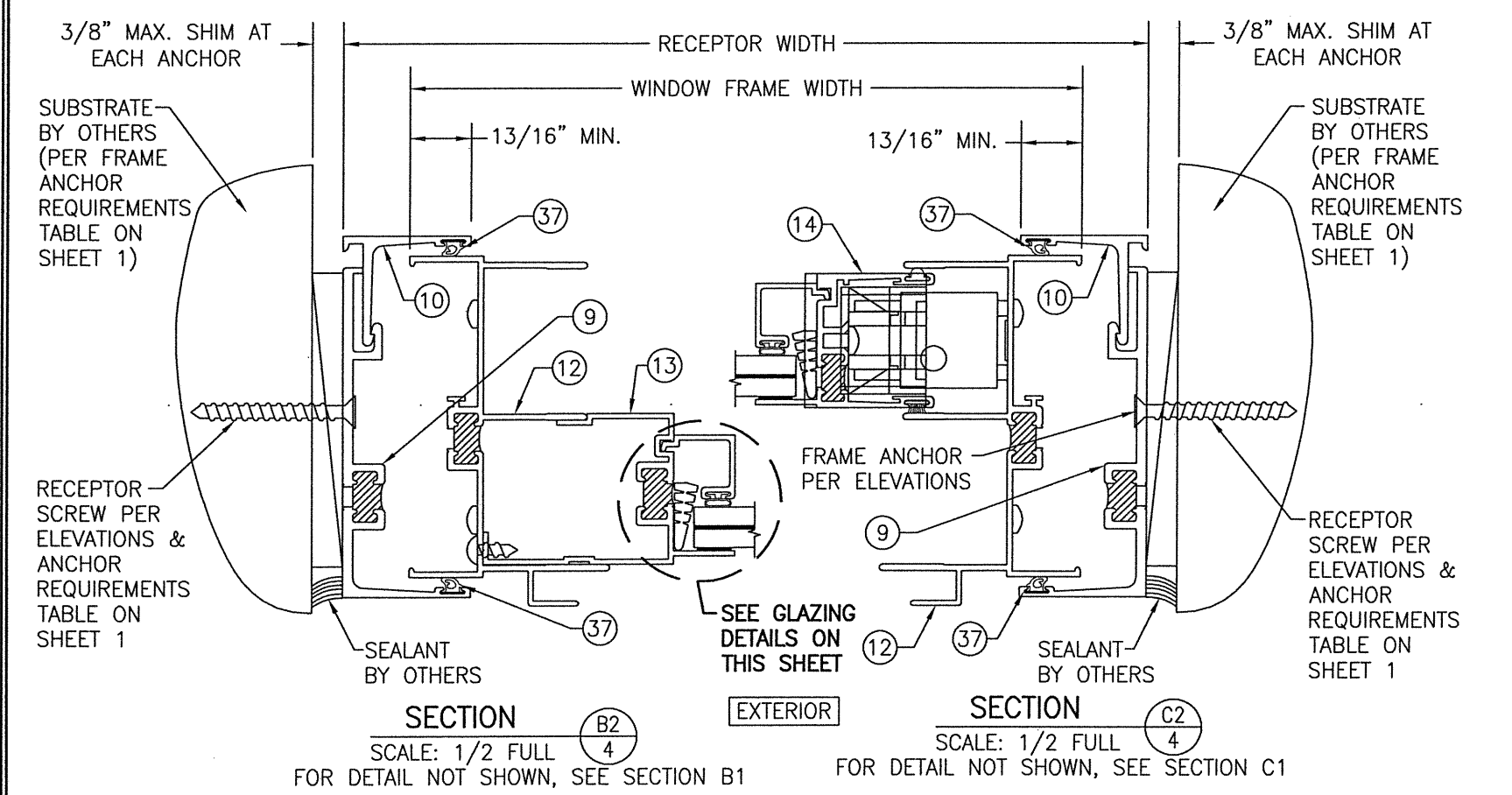


| | | | |
|--|----------------------|--------------------|------|
| DRAWN BY: W.W.S. | | CHECKED BY: W.W.S. | |
| PLOT: 1=2 | | DATE: 03/04/21 | |
| NO. | REVISION DESCRIPTION | BY | DATE |
| | | | |
| DRAWING TITLE: 8430TL SINGLE HUNG WINDOW (SMALL & LARGE MISSILE IMPACT) | | | |
| JOB INFORMATION: KAWNEER COMPANY, INC. 555 GUTHRIDGE COURT NORCROSS, GA 30092 770-449-5555 | | | |
| CONSULTANTS: W. W. SCHAEFER ENGINEERING & CONSULTING, P.A. (REG. NO. F-14980) 7480 150TH COURT NORTH PALM BEACH GARDENS, FL 33418 PHONE: 561-744-3424 | | | |
| DRAWING NO. 1897T | | REV. | |
| SHEET NO. 3 | | OF 6 | |



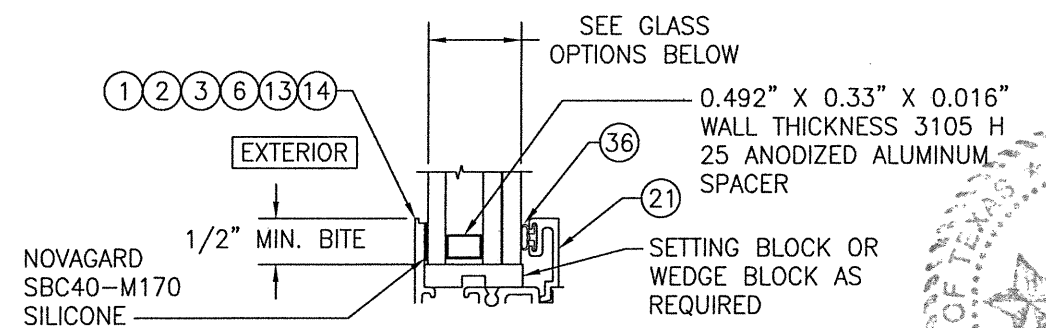
I.G. GLAZING DETAIL (LARGE MISSILE IMPACT WINDOWS)
SCALE: 1/2 FULL

- LMI GLASS OPTION 1: 1" LAMINATED I.G. (3/16" HT.ST./0.075" EASTMAN CHEM. CO. SAFLEX STORM/3/16" HT.ST. INTERIOR; 3/8" AIR SPACE; 3/16" HT.ST. EXTERIOR)
- LMI GLASS OPTION 2: 1" LAMINATED I.G. (3/16" HT.ST./0.100" EASTMAN CHEM. CO. SAFLEX HP/3/16" HT.ST. INTERIOR; 3/8" AIR SPACE; 3/16" HT.ST. EXTERIOR)
- LMI GLASS OPTION 3: 1" LAMINATED I.G. (3/16" HT.ST./0.090" KURARAY SG/3/16" HT.ST. INTERIOR; 3/8" AIR SPACE; 3/16" HT.ST. EXTERIOR)
- LMI GLASS OPTION 4: 1" LAMINATED I.G. (3/16" HT.ST./0.090" EASTMAN CHEM. CO. SAFLEX/3/16" HT.ST. INTERIOR; 3/8" AIR SPACE; 3/16" HT.ST. EXTERIOR)
- LMI GLASS OPTION 5: 1" LAMINATED I.G. (3/16" HT.ST./0.090" KURARAY BUTICITE PVB/3/16" HT.ST. INTERIOR; 3/8" AIR SPACE; 3/16" HT.ST. EXTERIOR)



NON-IG GLAZING DETAIL (SMALL MISSILE IMPACT WINDOWS)
SCALE: 1/2 FULL

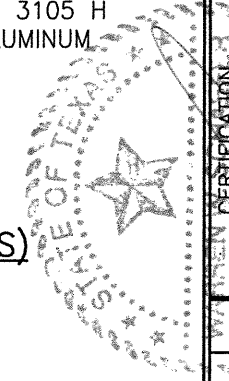
- SMI GLASS OPTION 1: 9/16" LAMINATED GLASS (1/4" HT. ST./0.06 KURARAY BUTICITE PVB/1/4" HT. ST.)
- SMI GLASS OPTION 2: 9/16" LAMINATED GLASS (1/4" HT. ST./0.06 EASTMAN CHEM. CO. SAFLEX/1/4" HT. ST.)

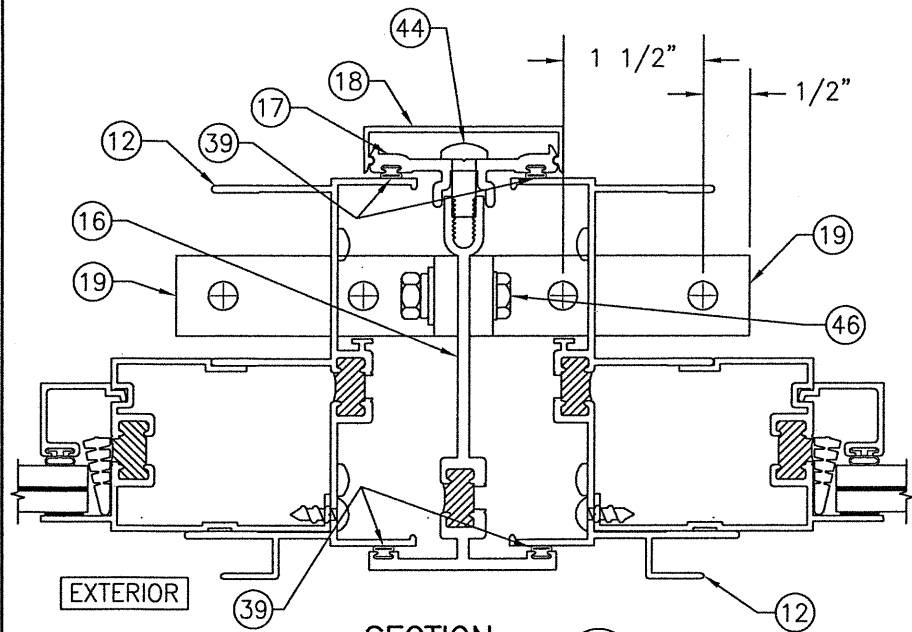


IG GLAZING DETAIL (SMALL MISSILE IMPACT WINDOWS)
SCALE: 1/2 FULL

- SMI GLASS OPTION 3: 1" LAMINATED I.G. (3/16" HT.ST./0.03" EASTMAN CHEM. CO. SAFLEX/3/16" HT.ST. INTERIOR; 3/8" AIR SPACE; 3/16" HT.ST. EXTERIOR)

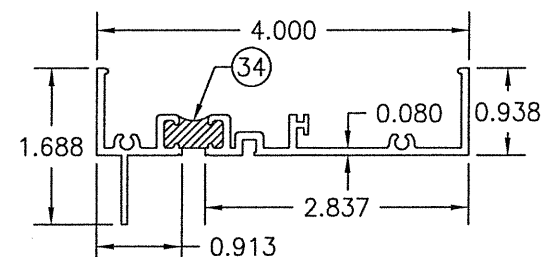
| | |
|--|-----------------------|
| DRAWN BY: W.W.S. | CHECKED BY: W.W.S. |
| PLOT: 1-2 | DATE: 03/04/21 |
| DATE | |
| BY | |
| REVISION DESCRIPTION | |
| NO. | |
| DRAWING TITLE 84-30TL SINGLE HUNG WINDOW (SMALL & LARGE MISSILE IMPACT) | |
| JOB INFORMATION: KAWNEER COMPANY, INC. 555 GUTHRIDGE COURT NORCROSS, GA 30092 770-449-5555 | |
| CONSULTANTS: W. W. SCHAEFER ENGINEERING & CONSULTING, P.A. (REG. NO. F-14980) 7480 150TH COURT NORTH, 33418 PALM BEACH GARDENS, FL PHONE: 561-744-3424 | |
| DRAWING NO. 1897T | |
| REV. | |
| SHEET NO. 4 OF 6 | |



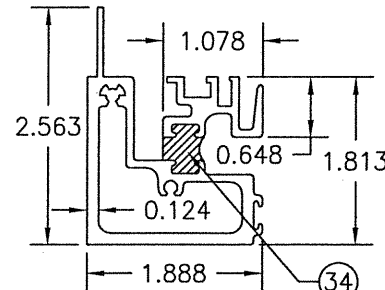


SECTION D-3

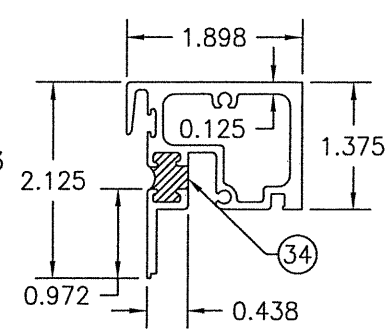
SCALE: 1/2 FULL
FOR DETAIL NOT SHOWN, SEE OTHER SECTIONS



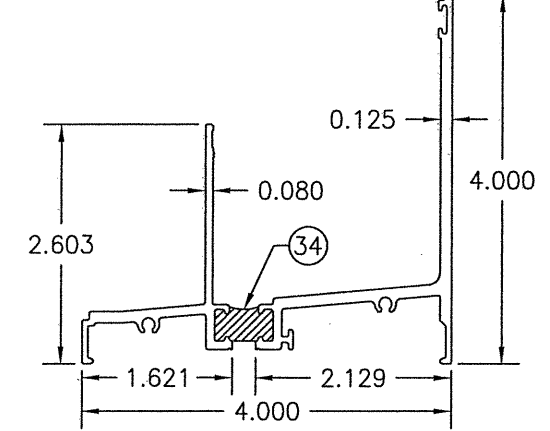
1 FRAME HEAD



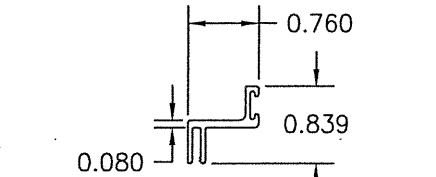
2 KEEPER RAIL



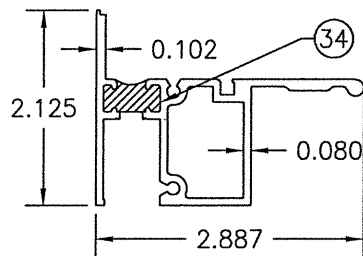
3 LOCK RAIL



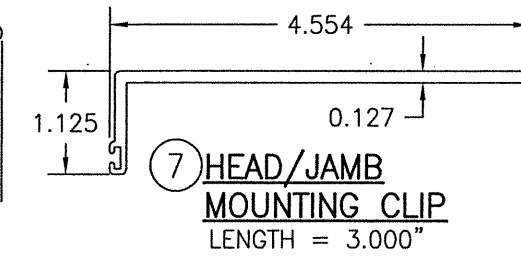
4 SILL



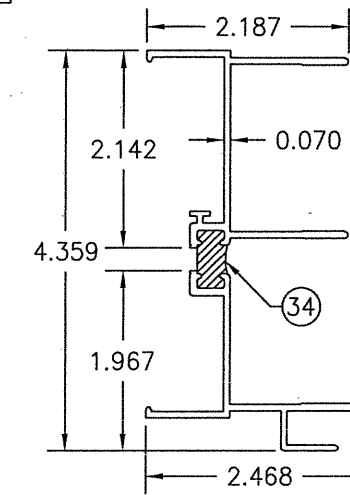
5 SILL WEATHERING SNAP



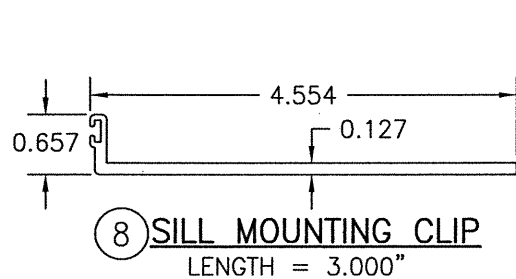
6 HANDLE RAIL



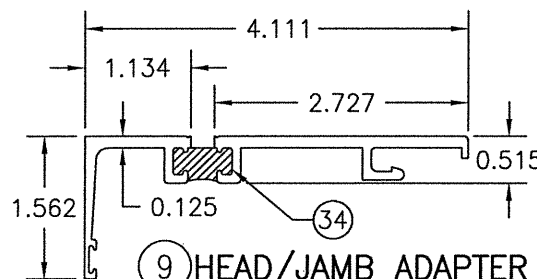
7 HEAD/JAMB MOUNTING CLIP
LENGTH = 3.000"



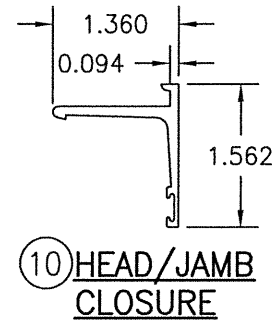
12 FRAME JAMB



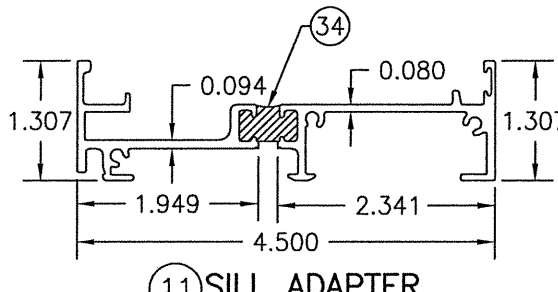
8 SILL MOUNTING CLIP
LENGTH = 3.000"



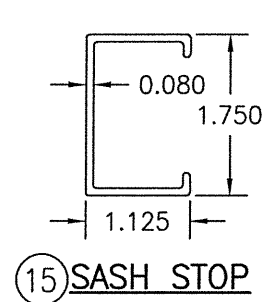
9 HEAD/JAMB ADAPTER



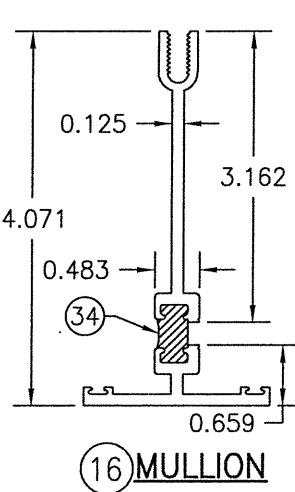
10 HEAD/JAMB CLOSURE



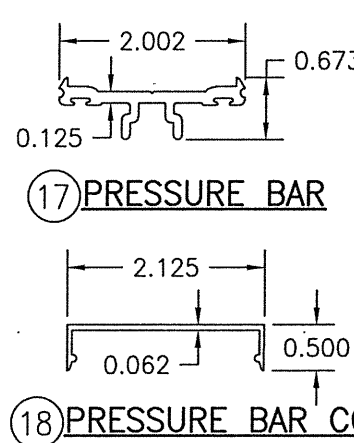
11 SILL ADAPTER



15 SASH STOP

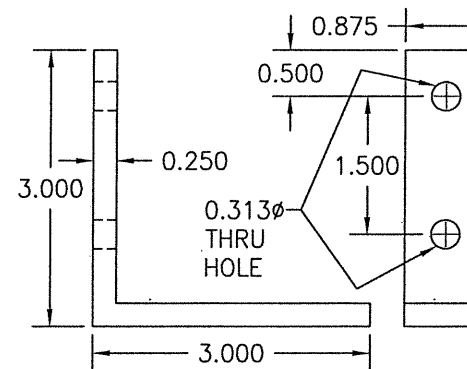


16 MULLION

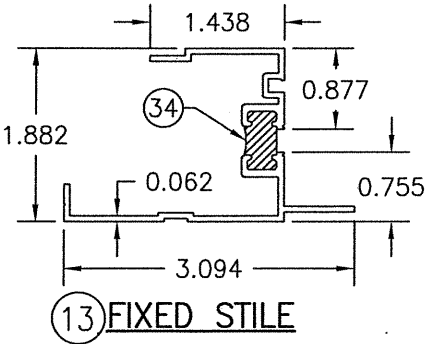


17 PRESSURE BAR

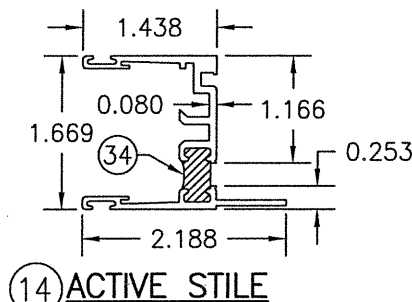
18 PRESSURE BAR COVER



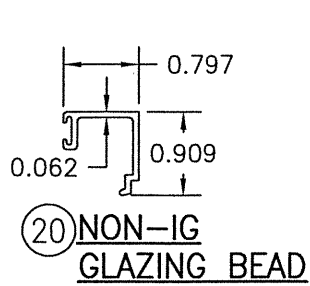
19 MULLION ANCHOR CLIP



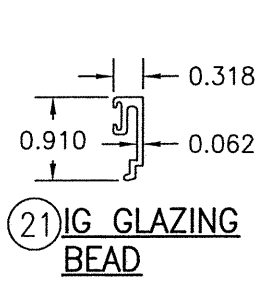
13 FIXED STILE



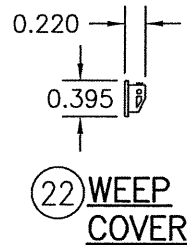
14 ACTIVE STILE



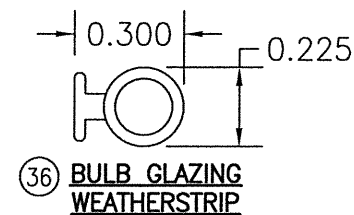
20 NON-IG GLAZING BEAD



21 IG GLAZING BEAD

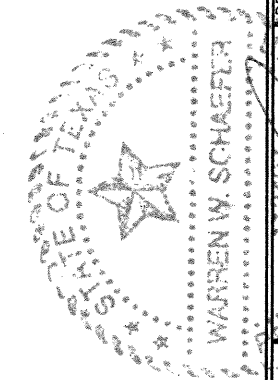


22 WEEP COVER



36 BULB GLAZING WEATHERSTRIP

| | |
|---|--|
| DRAWN BY: W.W.S. | CHECKED BY: W.W.S. |
| PLOT: 1=2 | DATE: 03/04/21 |
| DATE | BY |
| REVISION DESCRIPTION | NO. |
| DRAWING TITLE 84-30TL SINGLE HUNG WINDOW (SMALL & LARGE MISSILE IMPACT) | |
| JOB INFORMATION: KAWNEER COMPANY, INC. 555 GUTHRIDGE COURT NORCROSS, GA 30092 770-449-5555 | |
| CONSULTANTS: W. W. SCHAEFER ENGINEERING & CONSULTING, P.A. (REG. NO. F-14980) 7480 150TH COURT NORTH PALM BEACH GARDENS, FL 33418 PHONE: 561-744-3424 | |
| CERTIFICATION LICENSED PROFESSIONAL ENGINEER WARREN W. SCHAEFER | MAR 04 2021 WARREN W. SCHAEFER, P.E. P.E. NO. 113497 |
| DRAWING NO. 1897T | REV. |
| SHEET NO. 5 | OF 6 |



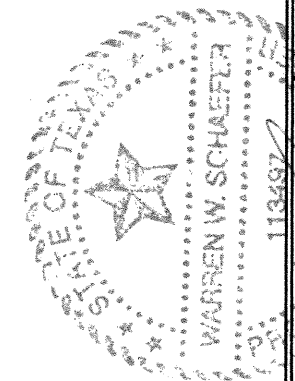
| ITEM # | PART # | ITEM DESCRIPTION | MANUFACTURER/NOTES |
|--------------------|---------|---|------------------------------------|
| PARTS | | | |
| 1 | 966-294 | FRAME HEAD | 6063-T6 ALUMINUM |
| 2 | 986-966 | KEEPER RAIL | 6063-T6 ALUMINUM |
| 3 | 986-974 | LOCK RAIL | 6063-T6 ALUMINUM |
| 4 | 245-207 | SILL | 6063-T6 ALUMINUM |
| 5 | 245-005 | SILL WEATHERING SNAP | 6063-T6 ALUMINUM |
| 6 | 245-389 | HANDLE RAIL | 6063-T6 ALUMINUM |
| 7 | 245-458 | HEAD/JAMB MOUNTING CLIP | 6063-T6 ALUMINUM |
| 8 | 245-459 | SILL MOUNTING CLIP | 6063-T6 ALUMINUM |
| 9 | 966-231 | HEAD/JAMB ADAPTER | 6063-T6 ALUMINUM |
| 10 | 966-232 | HEAD/JAMB CLOSURE | 6063-T6 ALUMINUM |
| 11 | 245-201 | SILL ADAPTER | 6063-T6 ALUMINUM |
| 12 | 245-239 | FRAME JAMB | 6063-T6 ALUMINUM |
| 13 | 966-296 | FIXED STILE | 6063-T6 ALUMINUM |
| 14 | 966-298 | ACTIVE STILE | 6063-T6 ALUMINUM |
| 15 | 245-407 | SASH STOP | 6063-T6 ALUMINUM |
| 16 | 245-287 | MULLION | 6063-T6 ALUMINUM |
| 17 | 245-490 | PRESSURE BAR | 6063-T6 ALUMINUM |
| 18 | 243-088 | PRESSURE BAR COVER | 6063-T6 ALUMINUM |
| 19 | 245-428 | MULLION ANCHOR CLIP | 6063-T6 ALUMINUM |
| 20 | 245-195 | NON-IG GLAZING BEAD | 6063-T6 ALUMINUM |
| 21 | 245-194 | IG GLAZING BEAD | 6063-T6 ALUMINUM |
| 22 | 245-521 | WEEP COVER | PVC |
| HARDWARE | | | |
| 27 | 245-421 | SASH CAM | KAWNEER - GLASS FILLED NYLON |
| 28 | 245-400 | LOCK KEEPER | KAWNEER - WHITE BRONZE |
| 29 | 245-460 | SWEEP LOCK | KAWNEER - WHITE BRONZE |
| 30 | 245-505 | BALANCE | KAWNEER SERIES 401 |
| 31 | 245-515 | BALANCE CLIP | KAWNEER - ZINC PLATED STEEL |
| SEALS AND SEALANTS | | | |
| 34 | - | DEBRIDGING | 2-PART POLYURETHANE |
| 35 | 127-080 | PILE WEATHERSTRIP | POLYPROPYLENE |
| 36 | 127-077 | BULB WEATHERSTRIP | TPE/POLYPROPYLENE (DUROMETER = 65) |
| 37 | 027-915 | GASKET | SANTOPRENE/POLYPROPYLENE |
| 38 | 127-076 | VINYL SPACER | RIGID PVC |
| 39 | 027-874 | BULB WEATHERSTRIP | VISTA PLEX/POLYPROPYLENE |
| 40 | 127-108 | PILE WEATHERSTRIP | POLYPROPYLENE |
| MISC. FASTENERS | | | |
| 42 | - | NO. 6 X 3/8" S.S. SCREW | 2 PER LOCK KEEPER |
| 43 | - | NO. 10 X 1/2" S.S. SCREW | 2 PER SWEEP LOCK |
| 44 | - | 1/4-20 X S.S. SCREW | 3" FROM ENDS & 3" O.C. |
| 45 | - | NO. 8 X 1/2" S.S. SCREW | 2 EACH SIDE OF FIXED STILE |
| 46 | - | 1/4-20 X 1" S.S. BOLT WITH NUT, FLAT WASHER & SPLIT WASHER | 1 PER MULLION ANCHOR |

| | |
|----------------------|-----------------------|
| DRAWN BY: W.W.S. | CHECKED BY: W.W.S. |
| PLOT: 1=2 | DATE: 03/04/21 |
| NO. | DATE |
| BY | BY |
| REVISION DESCRIPTION | REVISION DESCRIPTION |

DRAWING TITLE
84-30TL SINGLE HUNG WINDOW (SMALL & LARGE MISSILE IMPACT)

JOB INFORMATION:
KAWNEER COMPANY, INC.
555 GUTHRIDGE COURT
NORCROSS, GA 30092
770-449-5555

CONSULTANTS
W. W. SCHAEFER ENGINEERING &
CONSULTING, P.A. (REG. NO. F-14980)
7480 150TH COURT NORTH
PALM BEACH GARDENS, FL 33418
PHONE: 561-744-3424



CERTIFICATION
113497
MAR 04 2021
WARREN W. SCHAEFER, P.E.
P.E. NO. 113497

| | |
|----------------------|---------|
| DRAWING NO. 1897T | REV. |
| SHEET NO. 6 | OF 6 |