

REVISIONS			
REV	DESCRIPTION	DATE	APPROVED

NOTES:

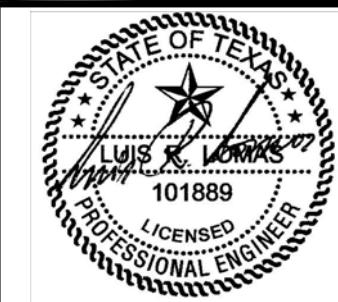
1. THE PRODUCT SHOWN HEREIN IS DESIGNED AND MANUFACTURED TO COMPLY WITH REQUIREMENTS OF THE 2018 IBC AND 2018 IRC.
2. WOOD FRAMING AND MASONRY OPENING TO BE DESIGNED AND ANCHORED TO PROPERLY TRANSFER ALL LOADS TO STRUCTURE. FRAMING AND MASONRY OPENING IS THE RESPONSIBILITY OF THE ARCHITECT OR ENGINEER OF RECORD.
3. 1X BUCK OVER MASONRY/CONCRETE IS OPTIONAL.
4. WHERE SHIM OR BUCK THICKNESS IS LESS THAN 1-1/2" UNITS MUST BE ANCHORED THROUGH THE FRAME IN ACCORDANCE WITH MANUFACTURER'S PUBLISHED INSTALLATION INSTRUCTIONS. ANCHORS SHALL BE SECURELY FASTENED DIRECTLY INTO MASONRY, CONCRETE OR OTHER STRUCTURAL SUBSTRATE MATERIAL.
5. WHERE WOOD BUCK THICKNESS IS 1-1/2" OR GREATER, BUCK SHALL BE SECURELY FASTENED TO MASONRY, CONCRETE OR OTHER STRUCTURAL SUBSTRATE. UNITS MAY BE ANCHORED THROUGH FRAME TO SECURED WOOD BUCK IN ACCORDANCE WITH MANUFACTURER'S PUBLISHED INSTALLATION INSTRUCTIONS.
6. WHERE 1X BUCK IS NOT USED DISSIMILAR MATERIALS MUST BE SEPARATED WITH APPROVED COATING OR MEMBRANE. SELECTION OF COATING OR MEMBRANE IS THE RESPONSIBILITY OF THE ARCHITECT OR ENGINEER OF RECORD.
7. BUCKS SHALL EXTEND BEYOND UNIT FRAME INTERIOR FACE SO THAT FULL FRAME SUPPORT IS PROVIDED.
8. FOR FIN INSTALLATION SHIM AS NEEDED. FOR FRAME INSTALLATION SHIM AS REQUIRED AT EACH ANCHOR LOCATION WITH LOAD BEARING SHIM. SHIM WHERE SPACE OF 1/16" OR GREATER OCCURS. MAXIMUM ALLOWABLE SHIM STACK TO BE 1/4".
9. SHIMS SHALL BE LOCATED, APPLIED AND MADE FROM MATERIALS AND THICKNESS CAPABLE OF SUSTAINING APPLICABLE LOADS.
10. WIND LOAD DURATION FACTOR Cd=1.6 WAS USED FOR WOOD ANCHOR CALCULATIONS.
11. FRAME MATERIAL: EXTRUDED RIGID PVC.
12. UNITS MUST BE GLAZED PER ASTM E1300.
13. APPROVED IMPACT PROTECTIVE SYSTEM IS REQUIRED FOR THIS PRODUCT IN WIND BORNE DEBRIS REGIONS.
14. FOR ANCHORING THROUGH FIN INTO WOOD FRAMING OR 2X BUCK USE #8 WOOD SCREWS WITH SUFFICIENT LENGTH TO ACHIEVE A 1 1/4" MINIMUM EMBEDMENT INTO SUBSTRATE. LOCATE ANCHORS AS SHOWN IN ELEVATIONS AND INSTALLATION DETAILS.

15. FOR ANCHORING THROUGH FRAME INTO WOOD FRAMING OR 2X BUCK USE #8 WOOD SCREWS WITH SUFFICIENT LENGTH TO ACHIEVE A 1 1/4" MINIMUM EMBEDMENT INTO SUBSTRATE. LOCATE ANCHORS AS SHOWN IN ELEVATIONS AND INSTALLATION DETAILS.
16. FOR ANCHORING THROUGH FRAME INTO MASONRY/CONCRETE USE 3/16" TAPCONS WITH SUFFICIENT LENGTH TO ACHIEVE A 1 1/4" MINIMUM EMBEDMENT INTO SUBSTRATE WITH 2" MINIMUM EDGE DISTANCE. LOCATE ANCHORS AS SHOWN IN ELEVATIONS AND INSTALLATION DETAILS.
17. FOR ANCHORING THROUGH FRAME INTO METAL STRUCTURE USE #8 SMS OR SELF DRILLING SCREWS WITH SUFFICIENT LENGTH TO ACHIEVE 3 THREADS MINIMUM BEYOND STRUCTURE INTERIOR WALL. LOCATE ANCHORS AS SHOWN IN ELEVATIONS AND INSTALLATION DETAILS.
18. ALL FASTENERS TO BE CORROSION RESISTANT.
19. INSTALLATION ANCHORS SHALL BE INSTALLED IN ACCORDANCE WITH ANCHOR MANUFACTURER'S INSTALLATION INSTRUCTIONS AND ANCHORS SHALL NOT BE USED IN SUBSTRATES WITH STRENGTHS LESS THAN THE MINIMUM STRENGTH SPECIFIED BELOW:
  - A. WOOD: MINIMUM SPECIFIC GRAVITY OF G=0.42
  - B. CONCRETE: MINIMUM COMPRESSIVE STRENGTH OF 2,000 PSI.
  - C. MASONRY: HOLLOW/FILLED BLOCK PER ASTM C90 WITH Fm=2,000PSI MINIMUM.
  - D. METAL STRUCTURE: STEEL 18GA (.048") FY=33KSI/FU=52KSI OR ALUMINUM 6063-T5 FU=30KSI .125" THICK MINIMUM

SIGNED: 03/15/2021

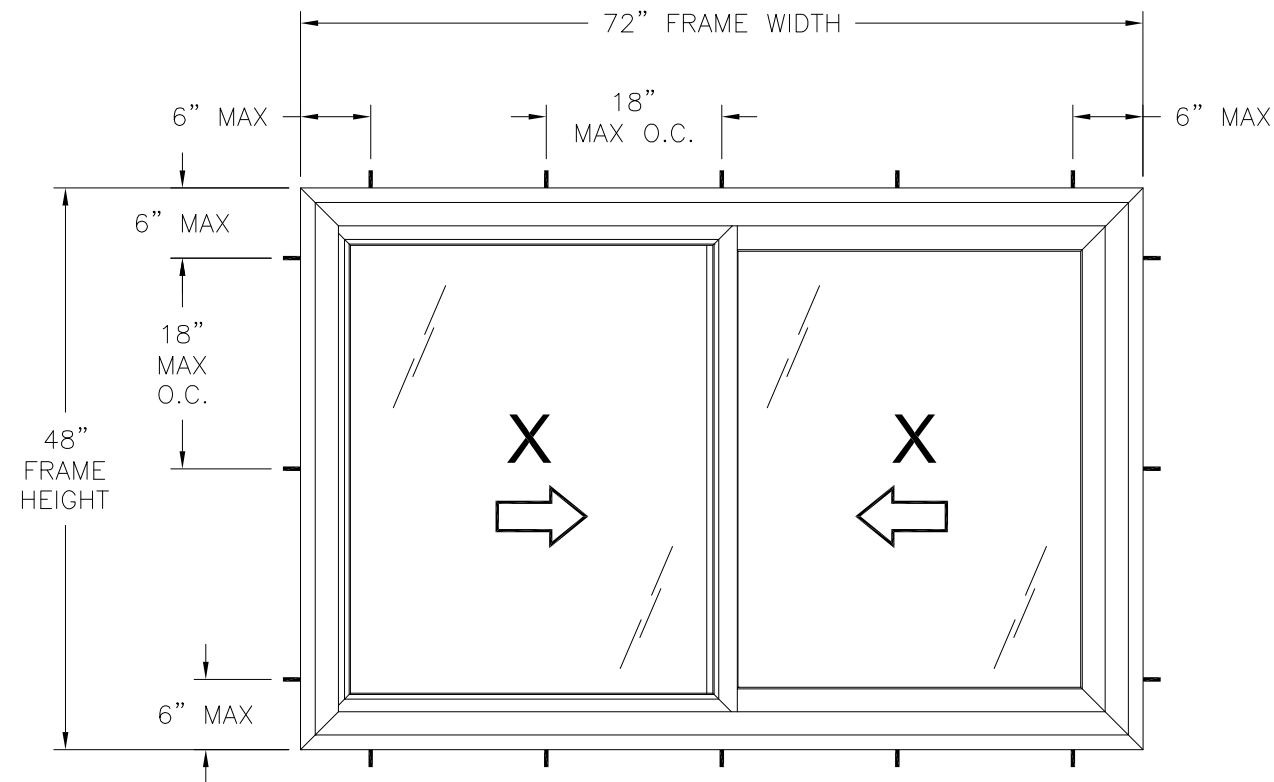
TABLE OF CONTENTS	
SHEET NO.	DESCRIPTION
1	NOTES
2	ELEVATIONS
3 - 7	INSTALLATION DETAILS
8	COMPONENTS

WINDOW MART MFG. LLC. 5760 ALBERT PIKE, PO BOX 570 ROYAL, AR 71968		
SERIES 7400 HORIZONTAL SLIDER REINFORCED WINDOW XX NON-IMPACT NOTES		
DRAWN: A.R.	DWG NO. 08-03692	REV -
SCALE NTS	DATE 03/10/2021	SHEET 1 OF 8
L. ROBERTO LOMAS P.E. 1432 WOODFORD RD LEWISVILLE, NC 27023 434-688-0609 rllomas@rlomaspe.com		

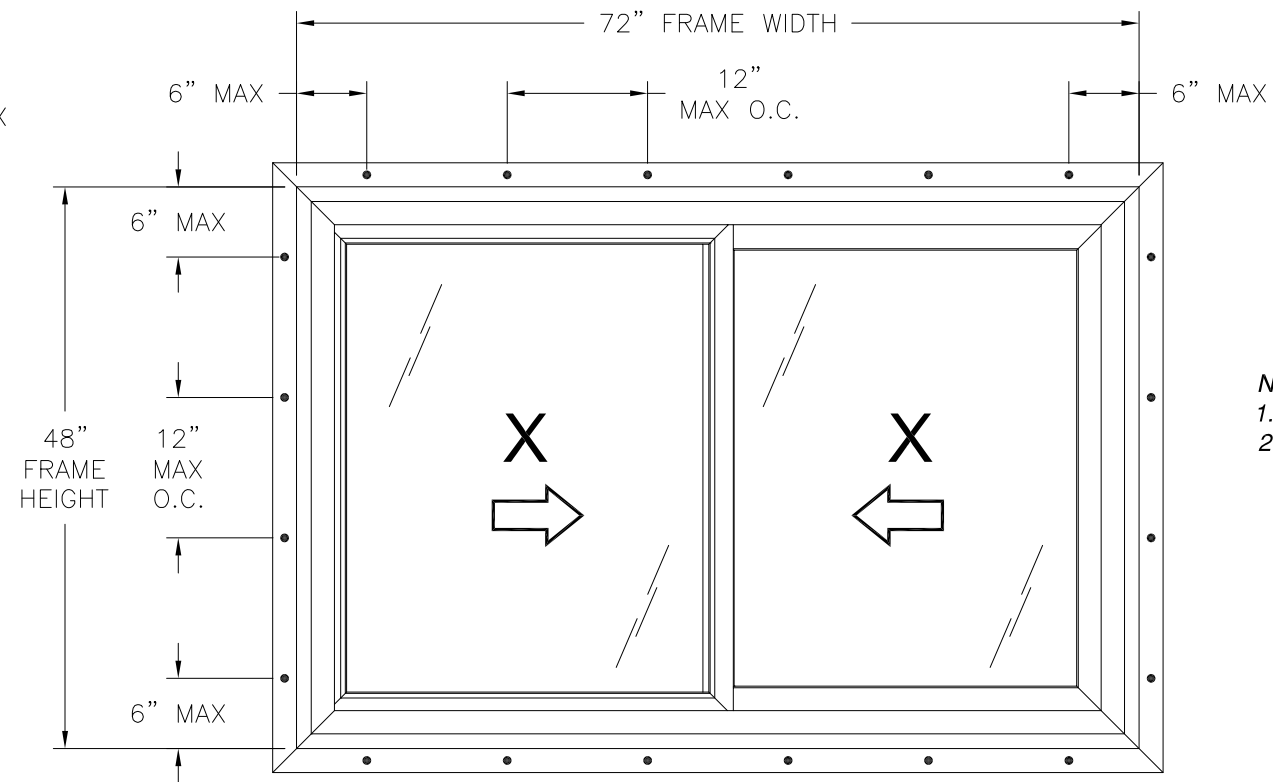


Luis R. Lomas P.E.  
TX No.: 101889

REVISIONS			
REV	DESCRIPTION	DATE	APPROVED



**SERIES 7400 HORIZONTAL SLIDER WINDOW**  
EXTERIOR VIEW  
FRAME INSTALLATION



**SERIES 7400 HORIZONTAL SLIDER WINDOW**  
EXTERIOR VIEW  
FIN INSTALLATION

- NOTES:**
- SASH SIZE: 34 3/4" X 44 1/4"
  - D.L.O.: 32 1/8" X 41 11/16"

DESIGN PRESSURE RATING	IMPACT RATING
±25.0PSF	NONE

SIGNED: 03/15/2021

WINDOW MART MFG. LLC.  
5760 ALBERT PIKE, PO BOX 570  
ROYAL, AR 71968

SERIES 7400 HORIZONTAL SLIDER REINFORCED WINDOW XX NON-IMPACT ELEVATIONS

DRAWN: A.R.	DWG NO. 08-03692	REV -
SCALE NTS	DATE 03/10/2021	SHEET 2 OF 8

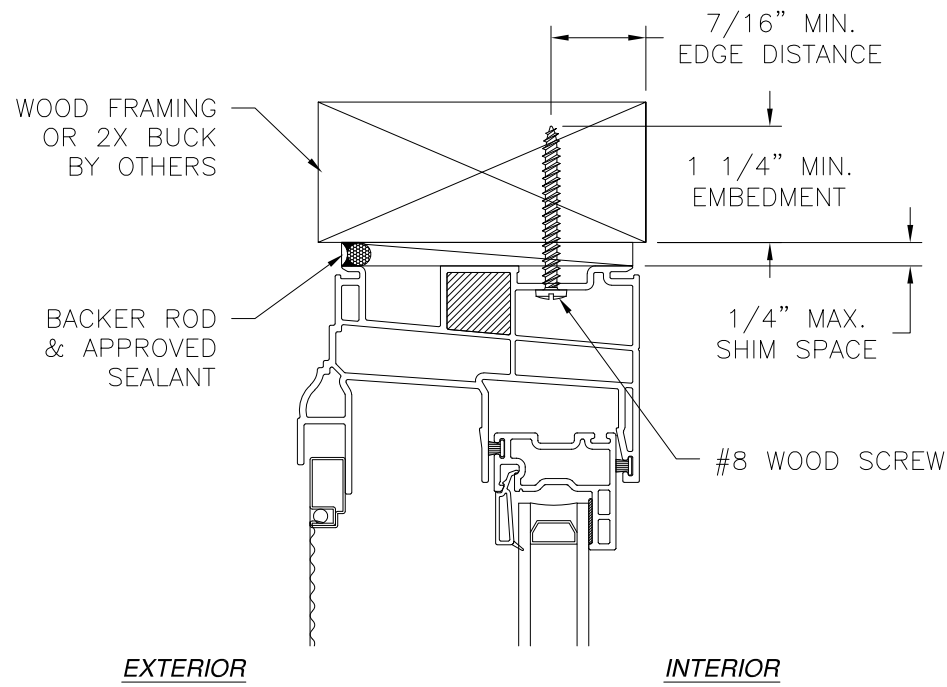
L. ROBERTO LOMAS P.E.  
1432 WOODFORD RD LEWISVILLE, NC 27023  
434-688-0609 rllomas@rlomaspe.com



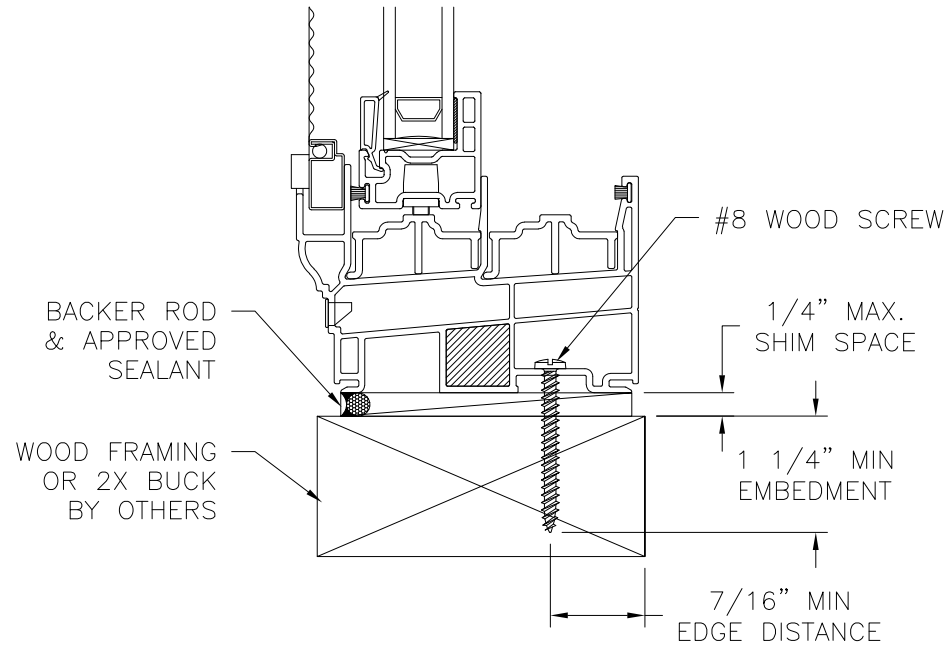
Luis R. Lomas P.E.  
TX No.: 101889

HARDWARE SCHEDULE	
A.	(2) METAL CAM LOCK WITH KEEPER AT LOCK STILE, 8" FROM EACH END
B.	(4) SINGLE METAL ROLLER WITH PLASTIC HOUSING AT EACH END OF BOTTOM RAILS
C.	ALUMINUM REINFORCEMENT (A6202/10006202) AT MEETING STILES

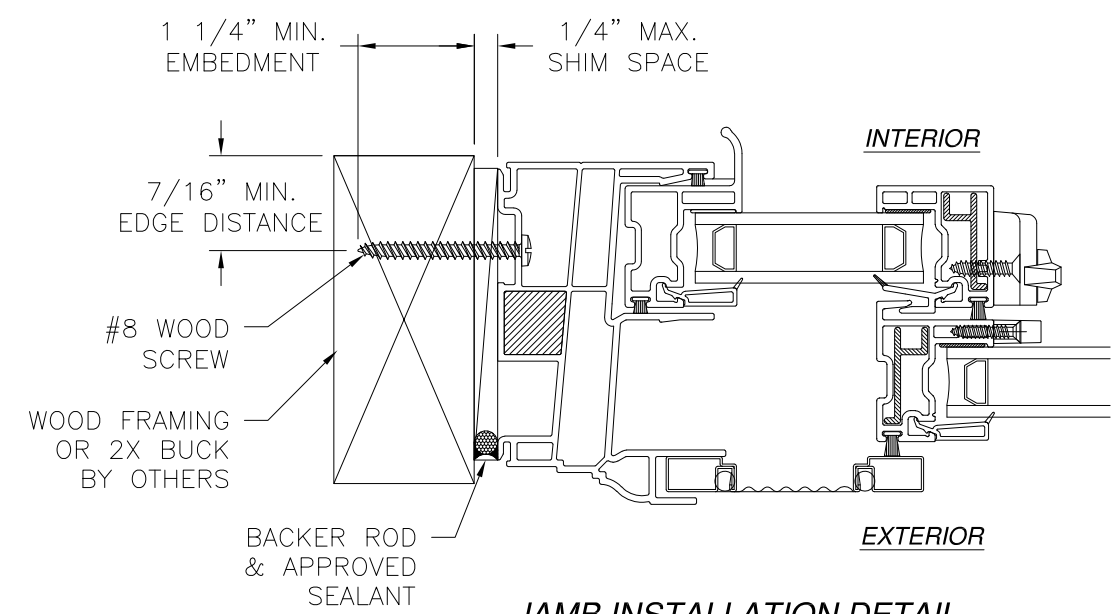
REVISIONS			
REV	DESCRIPTION	DATE	APPROVED



**EXTERIOR**                      **INTERIOR**



**VERTICAL CROSS SECTION**  
WOOD FRAMING OR 2X BUCK INSTALLATION



**JAMB INSTALLATION DETAIL**  
WOOD FRAMING OR 2X BUCK INSTALLATION

- NOTES:**
1. INTERIOR AND EXTERIOR FINISHES, BY OTHERS, NOT SHOWN FOR CLARITY.
  2. PERIMETER AND JOINT SEALANT BY OTHERS TO BE DESIGNED IN ACCORDANCE WITH ASTM E2112

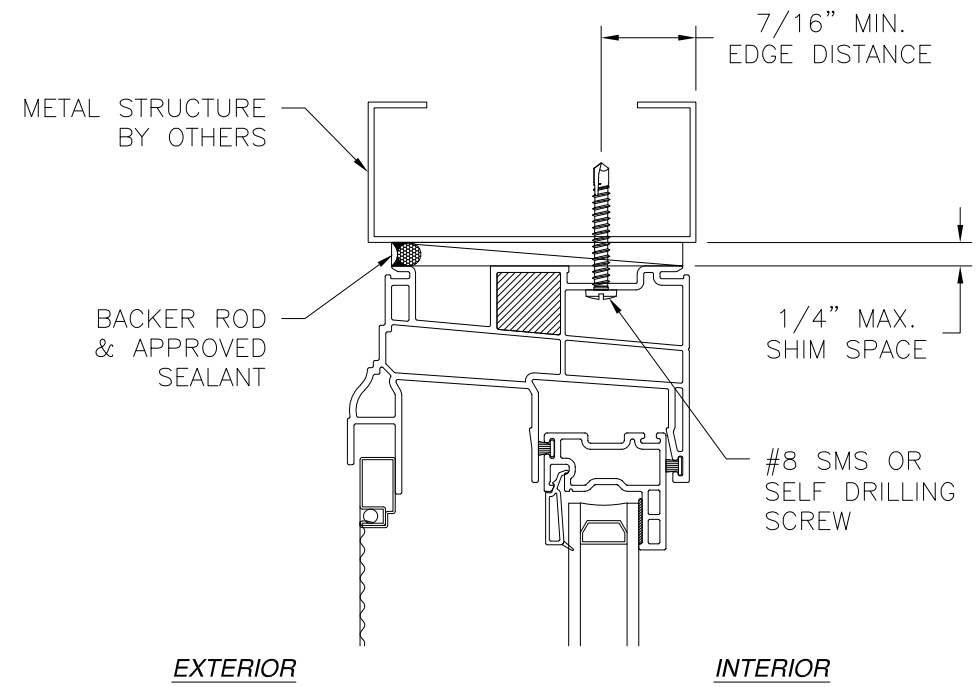
SIGNED: 03/15/2021

WINDOW MART MFG. LLC. 5760 ALBERT PIKE, PO BOX 570 ROYAL, AR 71968		
SERIES 7400 HORIZONTAL SLIDER REINFORCED WINDOW XX NON-IMPACT INSTALLATION DETAILS		
DRAWN: A.R.	DWG NO. 08-03692	REV -
SCALE NTS	DATE 03/10/2021	SHEET 3 OF 8
L. ROBERTO LOMAS P.E. 1432 WOODFORD RD LEWISVILLE, NC 27023 434-688-0609 rllomas@rlomaspe.com		

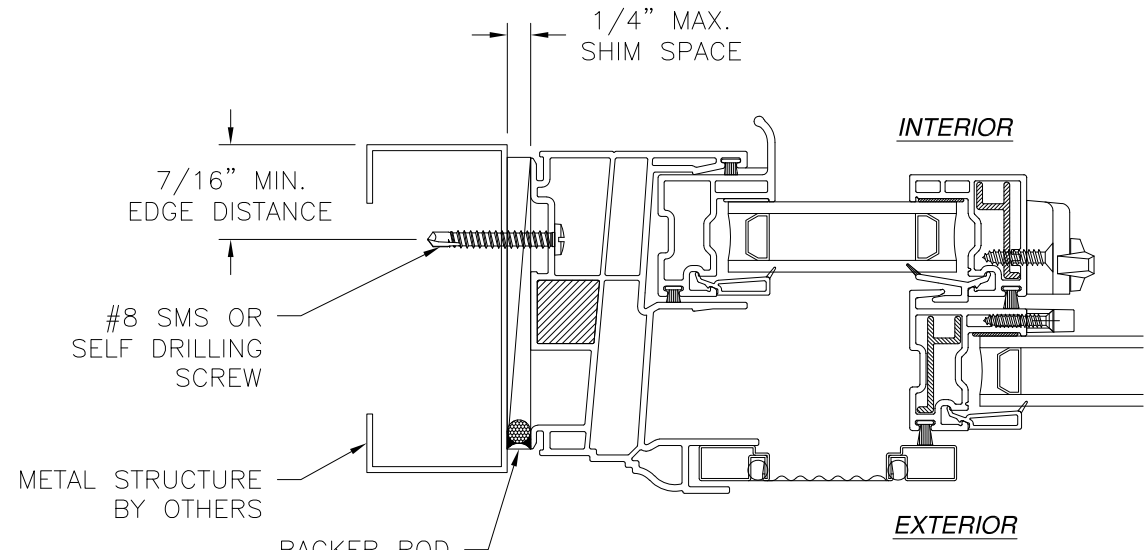


Luis R. Lomas P.E.  
TX No.: 101889

REVISIONS			
REV	DESCRIPTION	DATE	APPROVED



**VERTICAL CROSS SECTION**  
METAL STRUCTURE INSTALLATION



**JAMB INSTALLATION DETAIL**  
METAL STRUCTURE INSTALLATION

- NOTES:**
1. INTERIOR AND EXTERIOR FINISHES, BY OTHERS, NOT SHOWN FOR CLARITY.
  2. PERIMETER AND JOINT SEALANT BY OTHERS TO BE DESIGNED IN ACCORDANCE WITH ASTM E2112

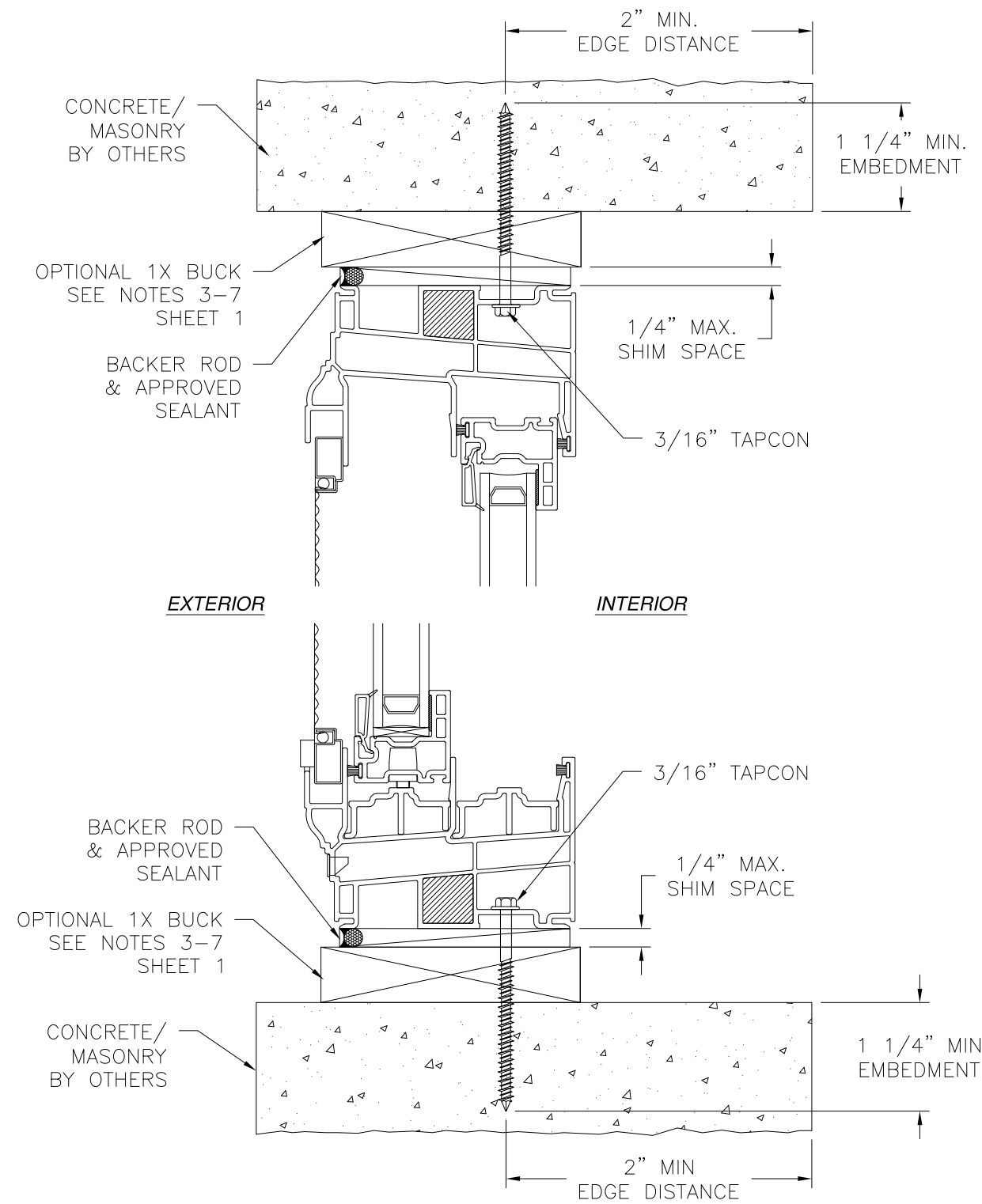
SIGNED: 03/15/2021

WINDOW MART MFG. LLC. 5760 ALBERT PIKE, PO BOX 570 ROYAL, AR 71968		
SERIES 7400 HORIZONTAL SLIDER REINFORCED WINDOW XX NON-IMPACT INSTALLATION DETAILS		
DRAWN: A.R.	DWG NO. 08-03692	REV -
SCALE NTS	DATE 03/10/2021	SHEET 4 OF 8
L. ROBERTO LOMAS P.E. 1432 WOODFORD RD LEWISVILLE, NC 27023 434-688-0609 rllomas@rlomaspe.com		

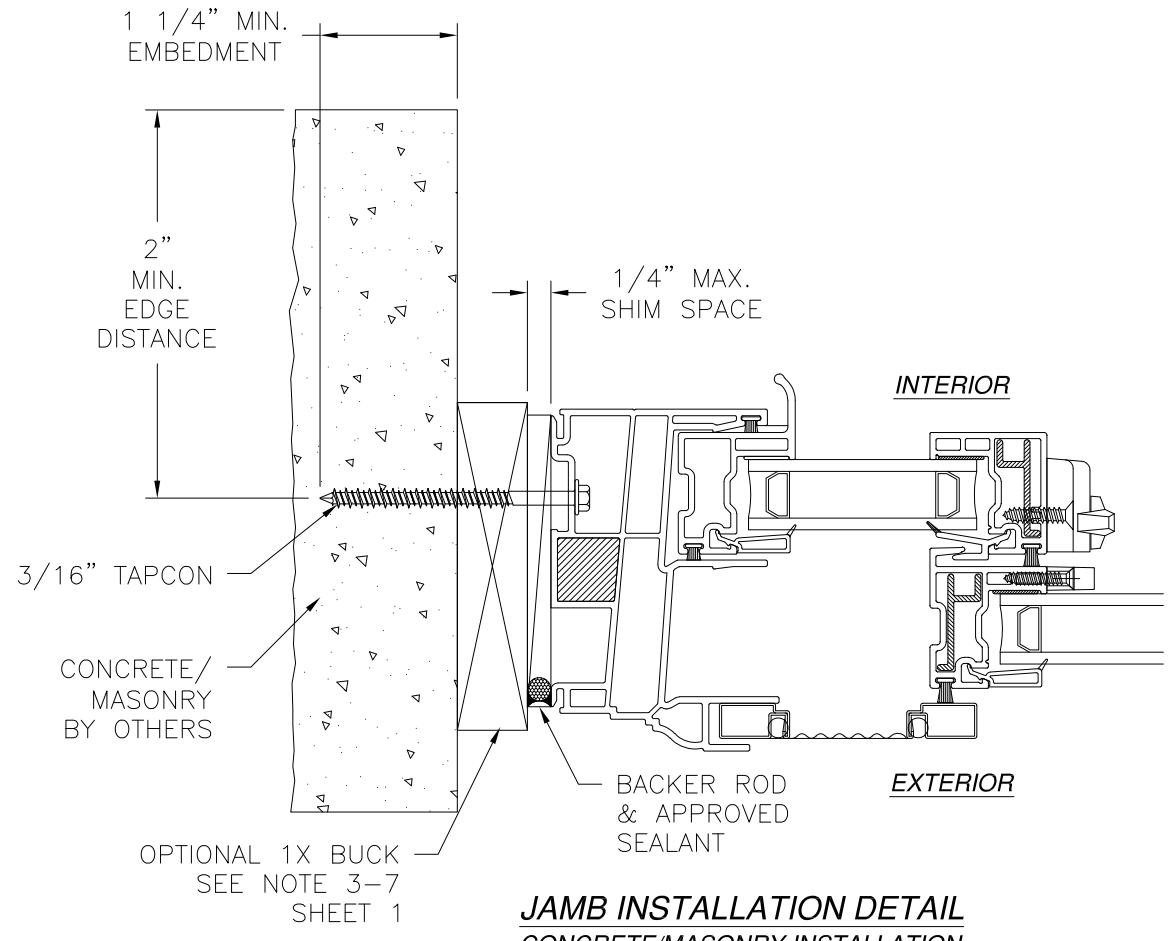


Luis R. Lomas P.E.  
TX No.: 101889

REVISIONS			
REV	DESCRIPTION	DATE	APPROVED



**VERTICAL CROSS SECTION**  
CONCRETE/MASONRY INSTALLATION



**JAMB INSTALLATION DETAIL**  
CONCRETE/MASONRY INSTALLATION

- NOTES:**
1. INTERIOR AND EXTERIOR FINISHES, BY OTHERS, NOT SHOWN FOR CLARITY.
  2. PERIMETER AND JOINT SEALANT BY OTHERS TO BE DESIGNED IN ACCORDANCE WITH ASTM E2112

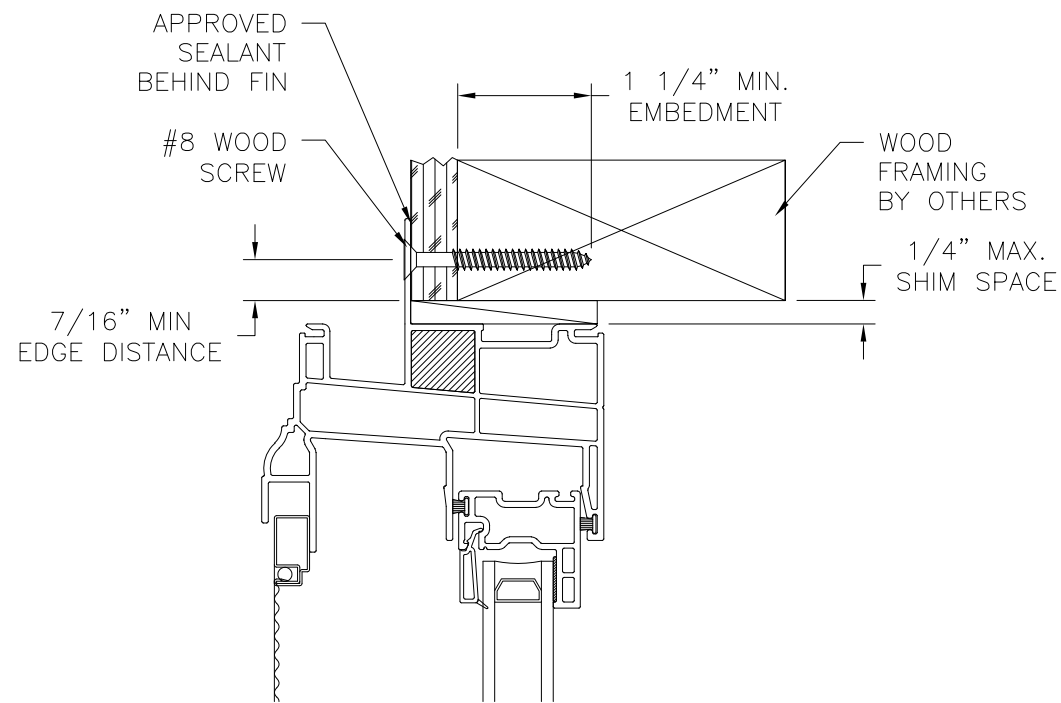
SIGNED: 03/15/2021

WINDOW MART MFG. LLC. 5760 ALBERT PIKE, PO BOX 570 ROYAL, AR 71968		
SERIES 7400 HORIZONTAL SLIDER REINFORCED WINDOW XX NON-IMPACT INSTALLATION DETAILS		
DRAWN: A.R.	DWG NO. 08-03692	REV -
SCALE NTS	DATE 03/10/2021	SHEET 5 OF 8
L. ROBERTO LOMAS P.E. 1432 WOODFORD RD LEWISVILLE, NC 27023 434-688-0609 rllomas@rlomaspe.com		



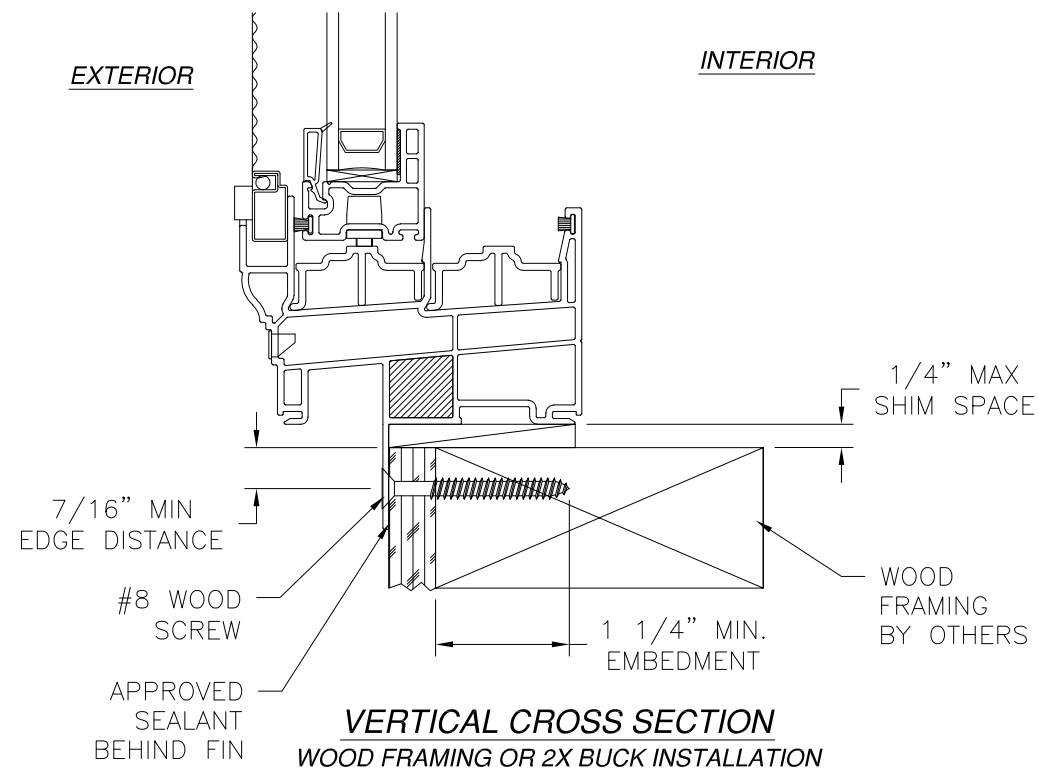
Luis R. Lomas P.E.  
TX No.: 101889

REVISIONS			
REV	DESCRIPTION	DATE	APPROVED

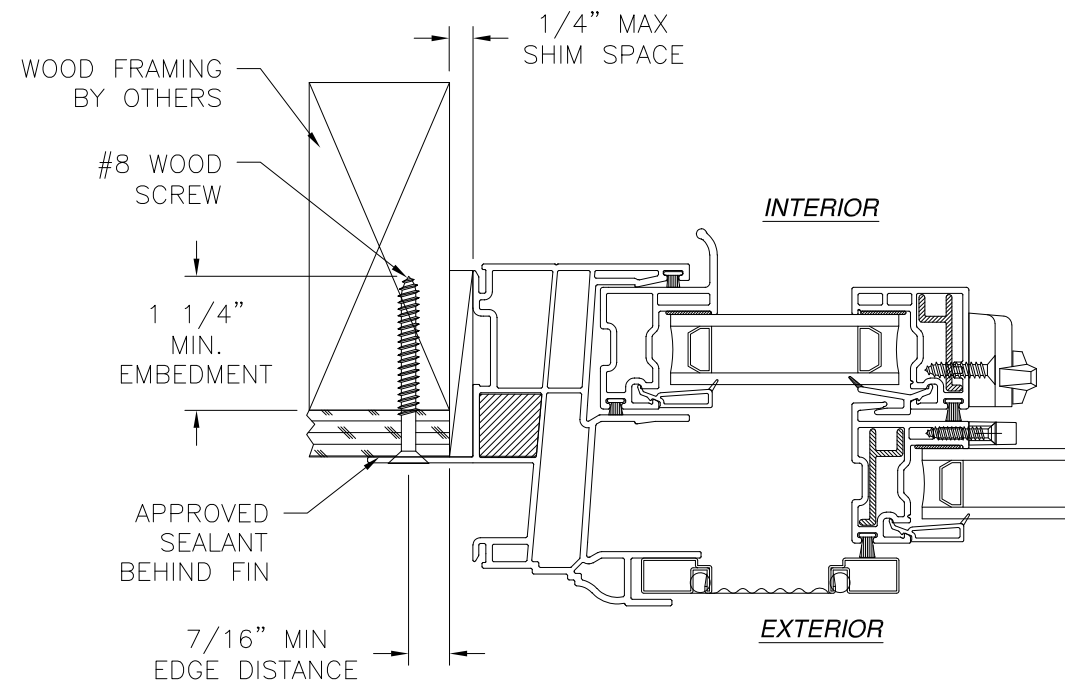


EXTERIOR

INTERIOR



**VERTICAL CROSS SECTION**  
WOOD FRAMING OR 2X BUCK INSTALLATION



**JAMB INSTALLATION DETAIL**  
WOOD FRAMING OR 2X BUCK INSTALLATION

**NOTES:**

1. INTERIOR AND EXTERIOR FINISHES, BY OTHERS, NOT SHOWN FOR CLARITY.
2. PERIMETER AND JOINT SEALANT BY OTHERS TO BE DESIGNED IN ACCORDANCE WITH ASTM E2112

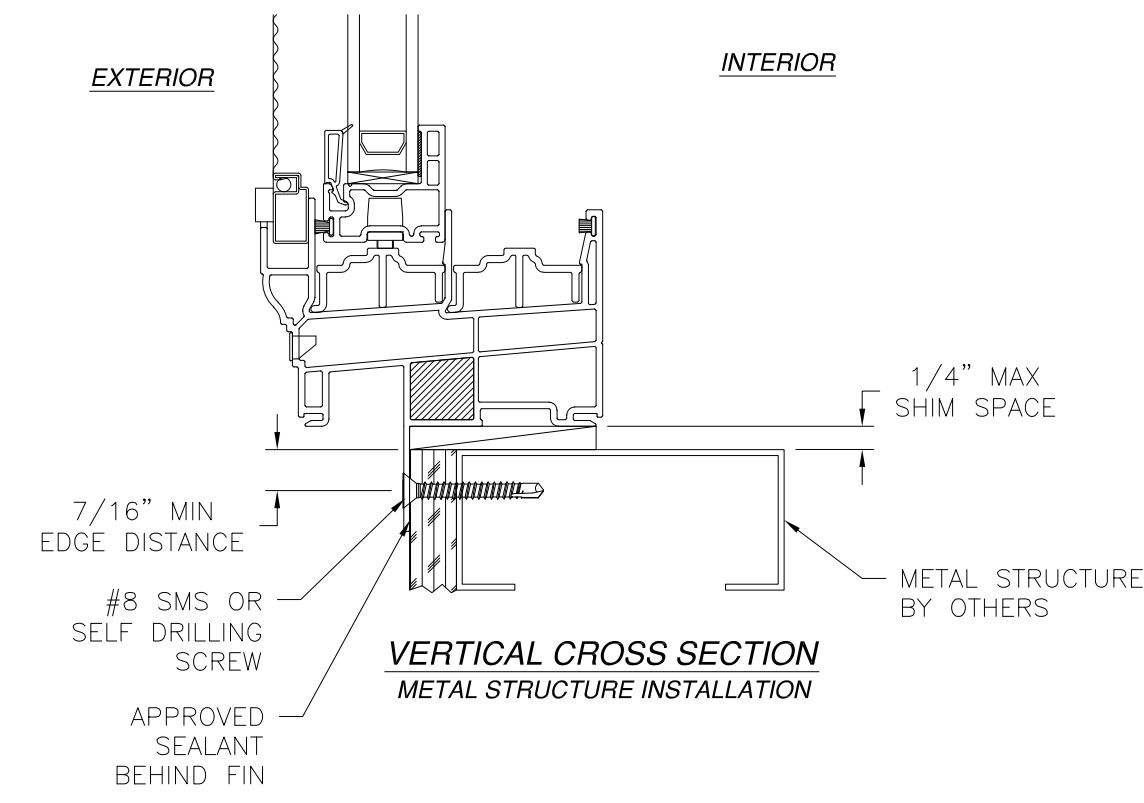
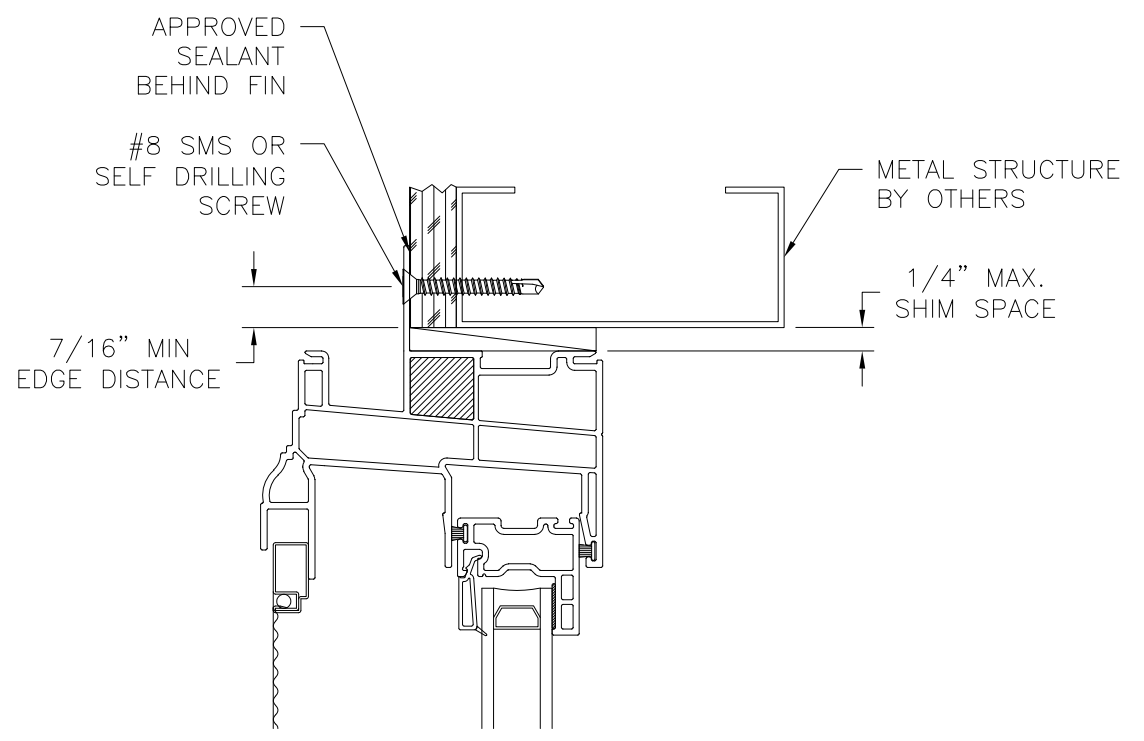
SIGNED: 03/15/2021

<p>WINDOW MART MFG. LLC. 5760 ALBERT PIKE, PO BOX 570 ROYAL, AR 71968</p>		
<p>SERIES 7400 HORIZONTAL SLIDER REINFORCED WINDOW XX NON-IMPACT FIN INSTALLATION DETAILS</p>		
<p>DRAWN: A.R.</p>	<p>DWG NO. 08-03692</p>	<p>REV -</p>
<p>SCALE NTS</p>	<p>DATE 03/10/2021</p>	<p>SHEET 6 OF 8</p>
<p>L. ROBERTO LOMAS P.E. 1432 WOODFORD RD LEWISVILLE, NC 27023 434-688-0609 rllomas@rlomaspe.com</p>		

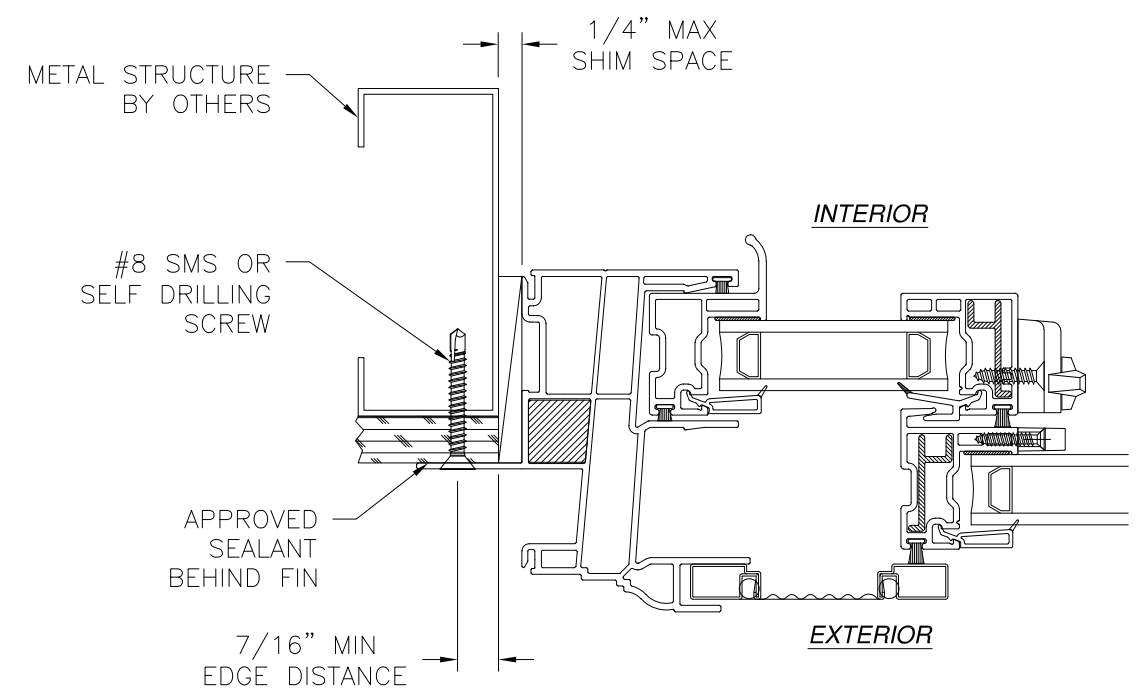


Luis R. Lomas P.E.  
TX No.: 101889

REVISIONS			
REV	DESCRIPTION	DATE	APPROVED



**VERTICAL CROSS SECTION**  
METAL STRUCTURE INSTALLATION



**JAMB INSTALLATION DETAIL**  
METAL STRUCTURE INSTALLATION

- NOTES:**
1. INTERIOR AND EXTERIOR FINISHES, BY OTHERS, NOT SHOWN FOR CLARITY.
  2. PERIMETER AND JOINT SEALANT BY OTHERS TO BE DESIGNED IN ACCORDANCE WITH ASTM E2112

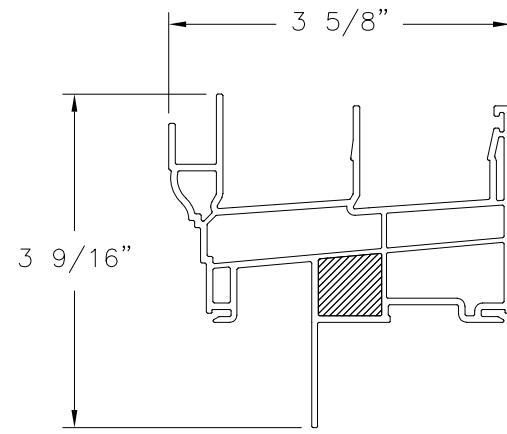
SIGNED: 03/15/2021

WINDOW MART MFG. LLC. 5760 ALBERT PIKE, PO BOX 570 ROYAL, AR 71968		
SERIES 7400 HORIZONTAL SLIDER REINFORCED WINDOW XX NON-IMPACT FIN INSTALLATION DETAILS		
DRAWN: A.R.	DWG NO. 08-03692	REV -
SCALE NTS	DATE 03/10/2021	SHEET 7 OF 8
L. ROBERTO LOMAS P.E. 1432 WOODFORD RD LEWISVILLE, NC 27023 434-688-0609 rllomas@rlomaspe.com		

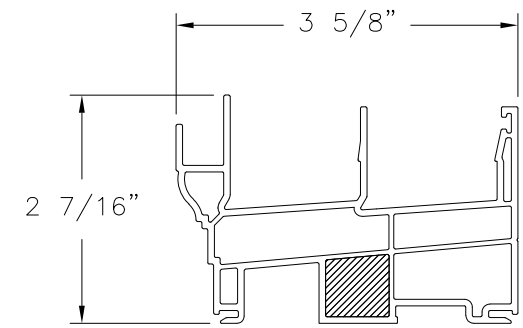


Luis R. Lomas P.E.  
TX No.: 101889

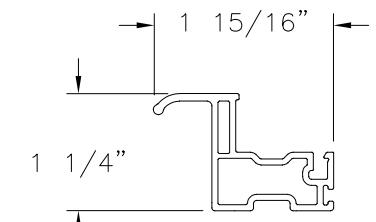
REVISIONS			
REV	DESCRIPTION	DATE	APPROVED



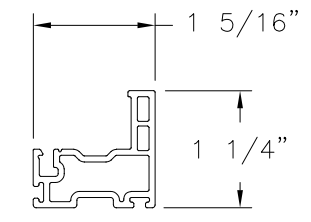
**MAIN FRAME (10008678)**  
**FIN INSTALLATION**  
EXTRUDED PVC



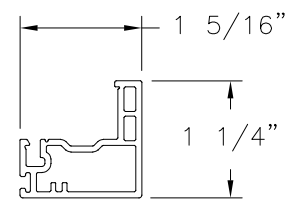
**MAIN FRAME (10008678)**  
**FRAME INSTALLATION**  
EXTRUDED PVC



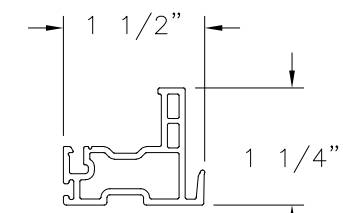
**PULL STILE (10008894)**  
EXTRUDED PVC



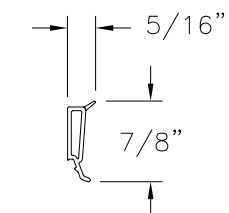
**TOP/BOTTOM RAIL (10008875)**  
EXTRUDED PVC



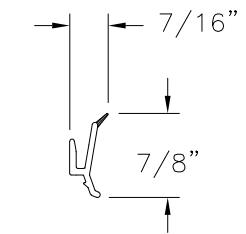
**LOCK RAIL (10008885)**  
EXTRUDED PVC



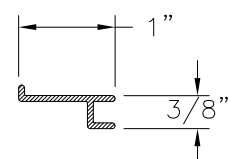
**KEEPER STILE (10008890)**  
EXTRUDED PVC



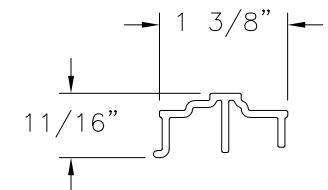
**GLAZING BEAD (10005473)**  
EXTRUDED PVC



**INTERLOCK GLAZING BEAD (10005551)**  
EXTRUDED PVC



**REINFORCEMENT**  
ALUMINUM 6063-T5



**SLIDER TRACK INSERT (10008466)**  
EXTRUDED PVC

SIGNED: 03/15/2021

WINDOW MART MFG. LLC. 5760 ALBERT PIKE, PO BOX 570 ROYAL, AR 71968		
SERIES 7400 HORIZONTAL SLIDER REINFORCED WINDOW XX NON-IMPACT COMPONENTS		
DRAWN: A.R.	DWG NO. 08-03692	REV -
SCALE NTS	DATE 03/10/2021	SHEET 8 OF 8
L. ROBERTO LOMAS P.E. 1432 WOODFORD RD LEWISVILLE, NC 27023 434-688-0609 rllomas@lrlomaspe.com		



Luis R. Lomas P.E.  
TX No.: 101889