



"Restorations" Series Single Hung Window "NON-IMPACT"

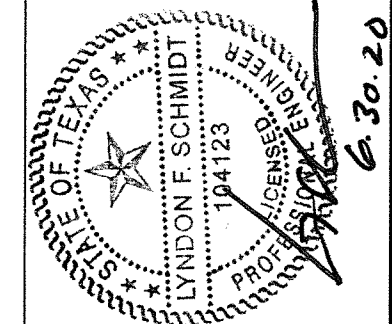
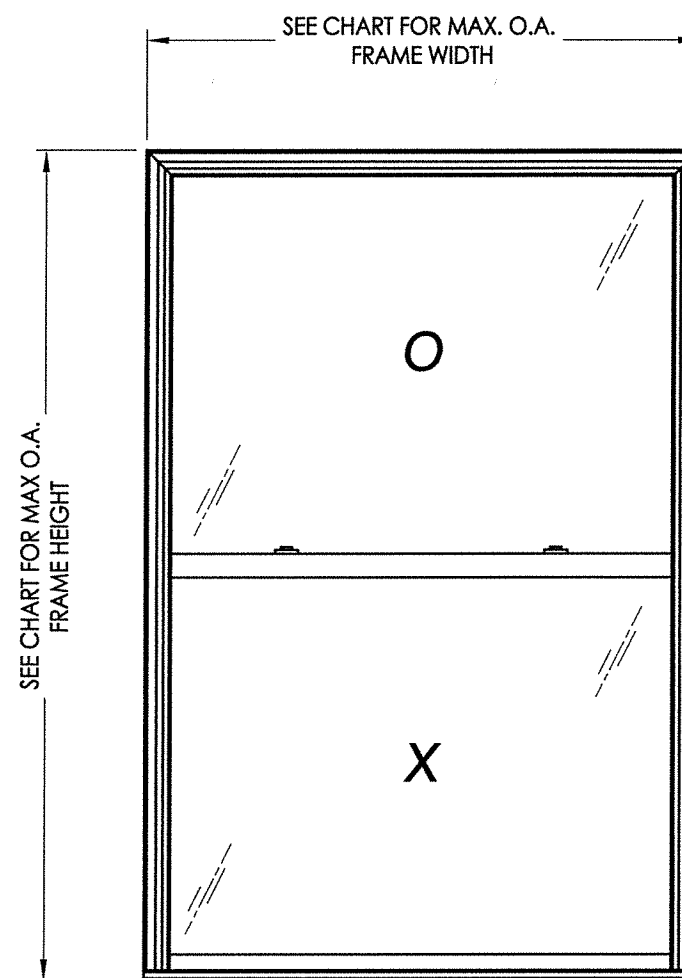
EVALUATED FOR USE IN THE STATE OF TEXAS

The Single Hung Window described herein complies with the 2018 International Residential Code (IRC), Sections R301 & R609 and the 2018 International Building Code (IBC), Sections 1404.13, 1609, 1709.5, 2403 and 2404 subject to the following conditions:

1. Anchors shall be as listed and spaced as shown in the details. Anchor embedment to base material shall be beyond roof covering.
2. When used in areas requiring wind-borne debris protection this product is required to be protected with an impact resistant covering that complies with Section R301.2.1.2 of the IRC and Section 1609.2 of the IBC.
3. Allowable design pressure requirements must be equal to or less than the design pressure rating shown in the design pressure chart, sheet 1 of this drawing.
4. Conditions not covered by this drawing are subject to further engineering analysis.

TABLE OF CONTENTS

SHEET #	DESCRIPTION
1	Typical Elevations, Design Pressures & General Notes
2	Frame Anchoring & Cross Section
3	Bill of Materials, Components & Glazing Details



Documents Prepared By: Lyndon F. Schmidt, P.E.
TEXAS P.E. #104123

RW BUILDING CONSULTANTS, INC.
P.O. Box 230 Vairico FL 33595
Phone No.: 813.659.9197

TEXAS BOARD OF PROFESSIONAL ENGINEERS
CERTIFICATE OF REGISTRATION # F-11852

PRODUCT: SINGLE HUNG WINDOW

PART OR ASSEMBLY:
TYPICAL ELEVATION, DESIGN PRESSURES & GENERAL NOTES

NO.	DATE	BY	REVISIONS

DATE: 6/30/20

SCALE: N.T.S.

DWG. BY: RW

CHK. BY: LFS

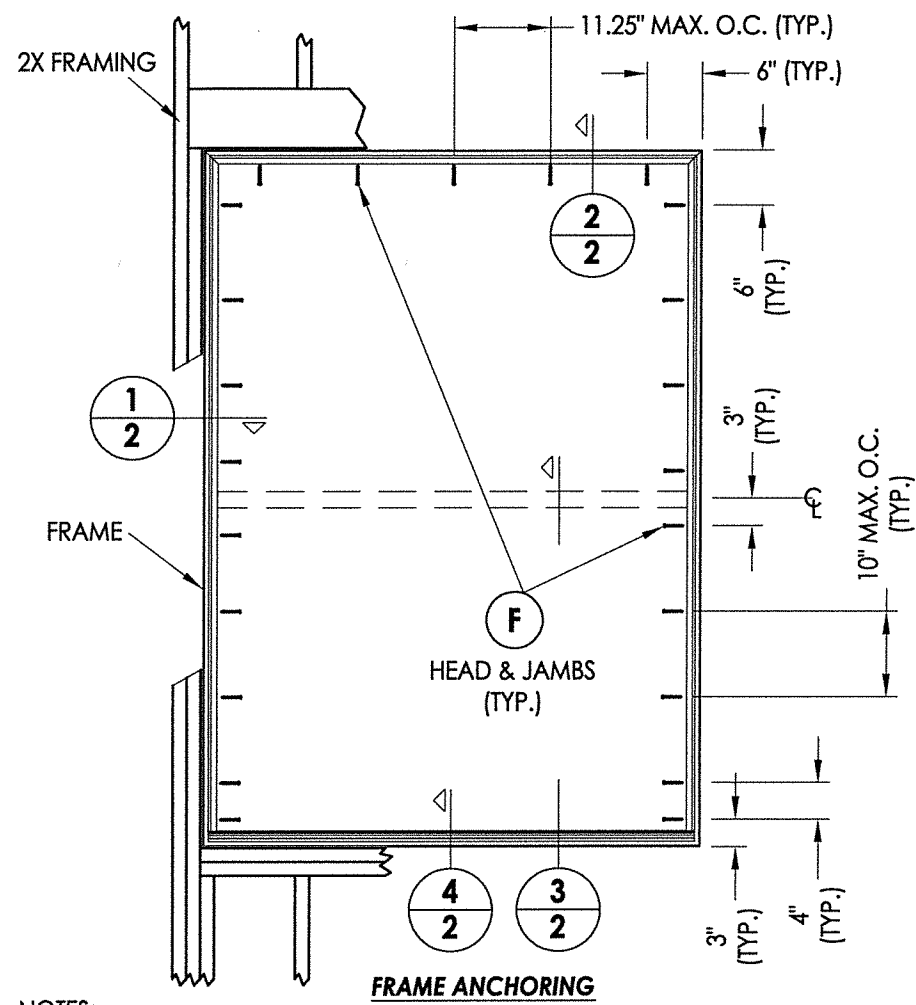
DRAWING NO.:

TX-5079

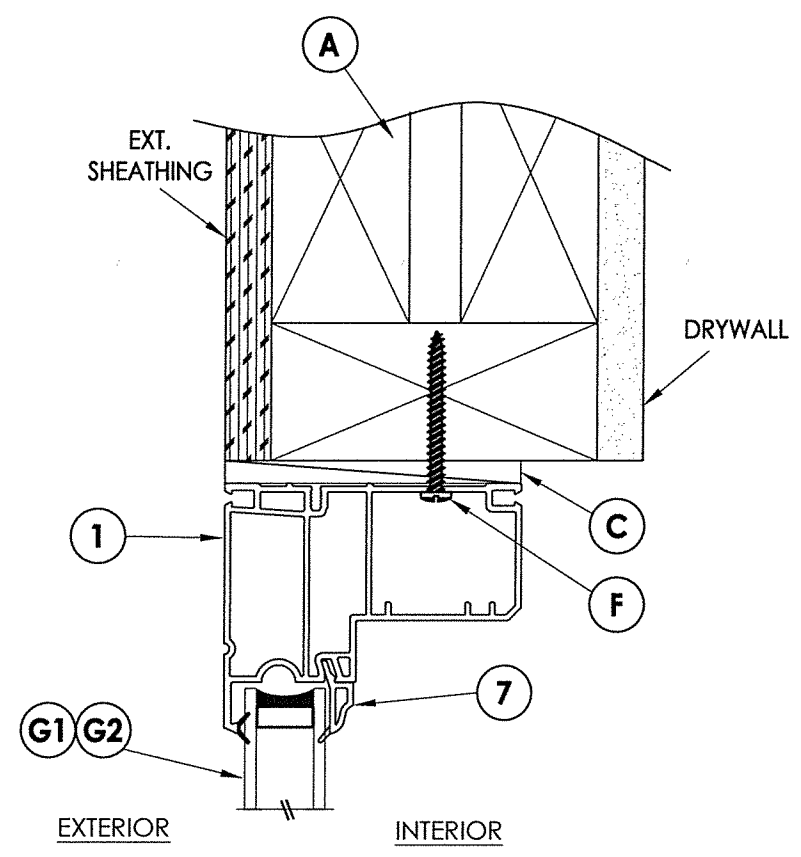
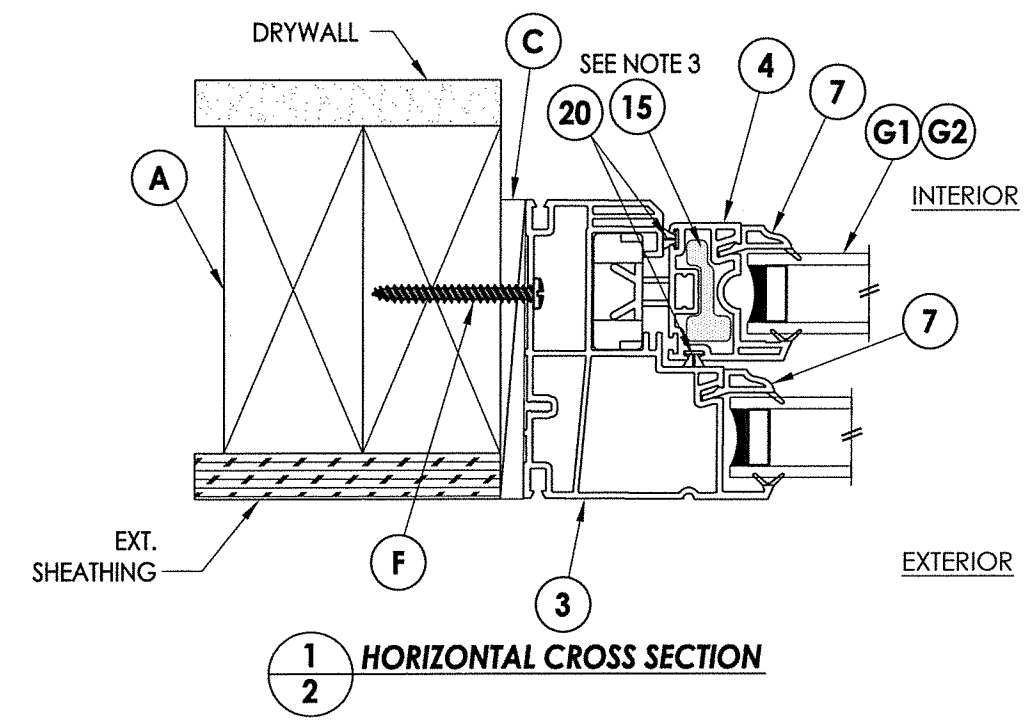
SHEET 1 OF 3

MAX. OVERALL FRAME DIMENSION	MAX DAY LITE DIMENSION (FIXED)	GLASS TYPE	DESIGN PRESSURE (PSF) w/out SILL RISER		DESIGN PRESSURE (PSF) w/ SILL RISER	
			POS.	NEG.	POS.	NEG.
49.0" X 93.0"	43.5" x 43.38"	G1	+25.0	-35.0	+25.0	-35.0
44.0" X 100.0"	38.56" x 46.88"	G1	+25.0	-35.0	+25.0	-35.0
53.0" X 83.0"	47.56" x 38.31"	G1	+25.0	-40.0	+30.0	-40.0
48.0" X 75.0"	42.56" x 34.31"	G2	+25.0	-45.0	+35.0	-45.0
40.0" X 63.0"	34.5" x 28.38"	G2	+25.0	-50.0	+50.0	-50.0

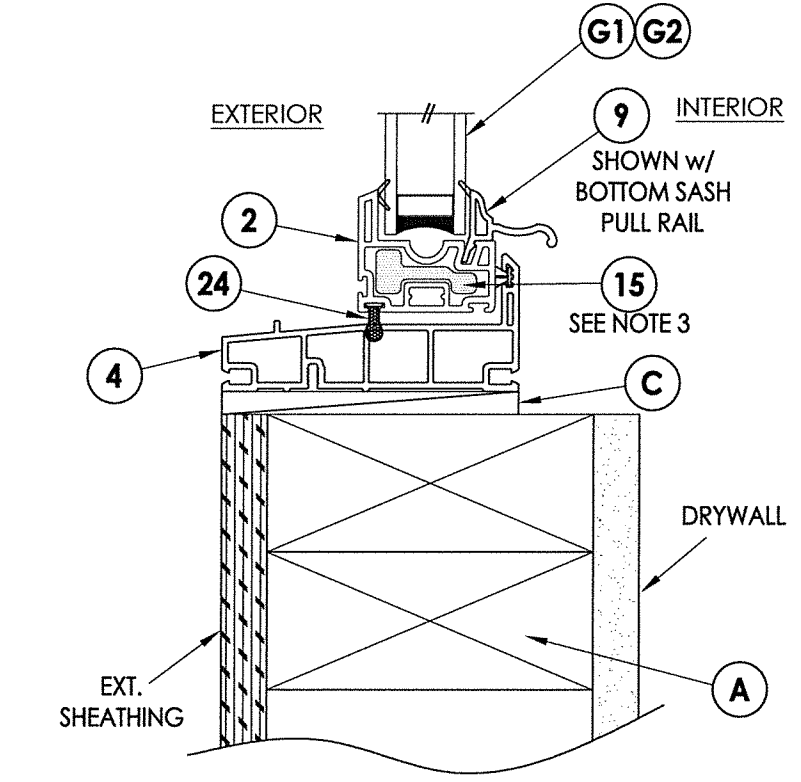
R:\Clients\Sunrise Windows\B - Texas Dept of Ins\TDI - XXX SH Restorations Series\C - Drawings\TX-5079.dwg, 2



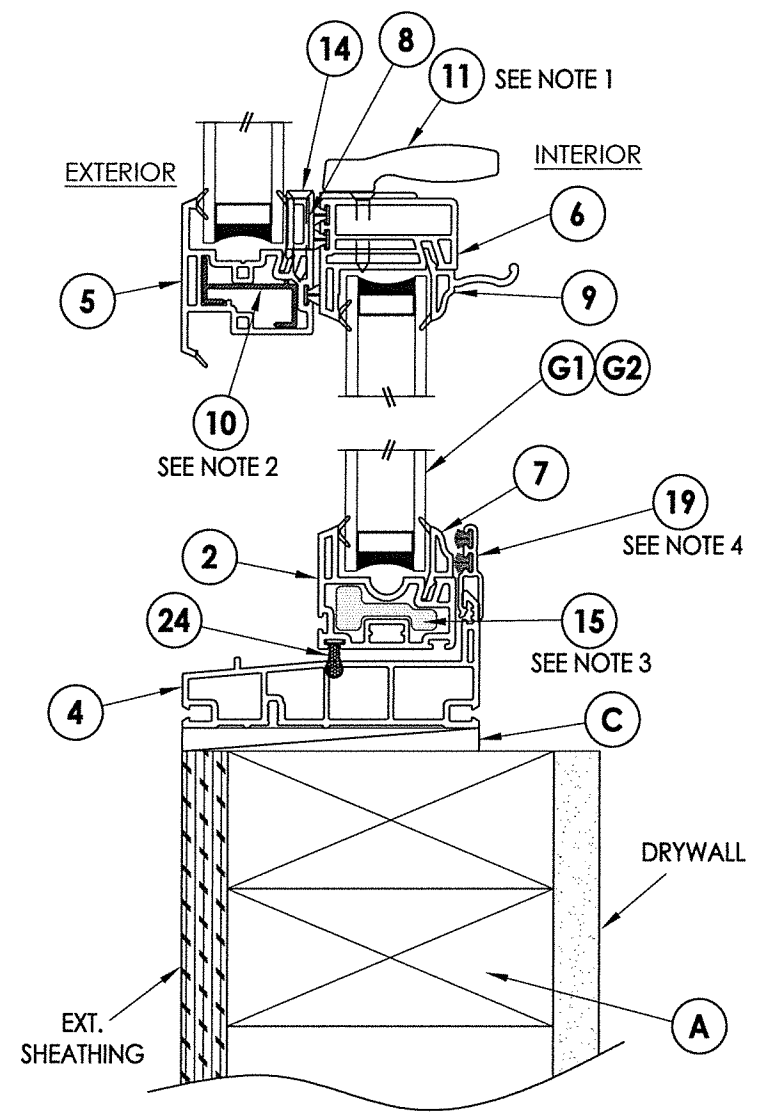
- NOTES:
1. LOCK & KEEPER LOCATED 11" FROM EACH END OF LOCK/MEETING RAIL.
 2. KEEPER RAIL REINFORCEMENT REQUIRED IN ALL SIZES.
 3. SASH STILE & BOTTOM RAIL REINFORCEMENT REQUIRED IN ALL SIZES EXCEPT 40" X 63" FRAME SIZE.
 4. SILL RISER REQUIRED FOR ALL POSITIVE DESIGN PRESSURES > 25 PSF.



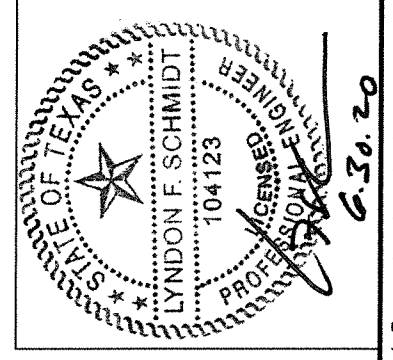
2 VERTICAL CROSS SECTION



4 VERTICAL CROSS SECTION



3 VERTICAL CROSS SECTION



Documents Prepared By: Lyndon F. Schmidt, P.E.
TEXAS P.E. #104123

RW BUILDING CONSULTANTS, INC.
P.O. Box 230 Valrico FL 33595
Phone No.: 813.659.9197

TEXAS BOARD OF PROFESSIONAL ENGINEERS
CERTIFICATE OF REGISTRATION # F-11852

PRODUCT: SINGLE HUNG WINDOW

PART OR ASSEMBLY: FRAME ANCHORING & CROSS SECTION

NO.	DATE	BY

DATE: 6/30/20

SCALE: N.T.S.

DWG. BY: RW

CHK. BY: LFS

DRAWING NO.: TX-5079

SHEET 2 OF 3

