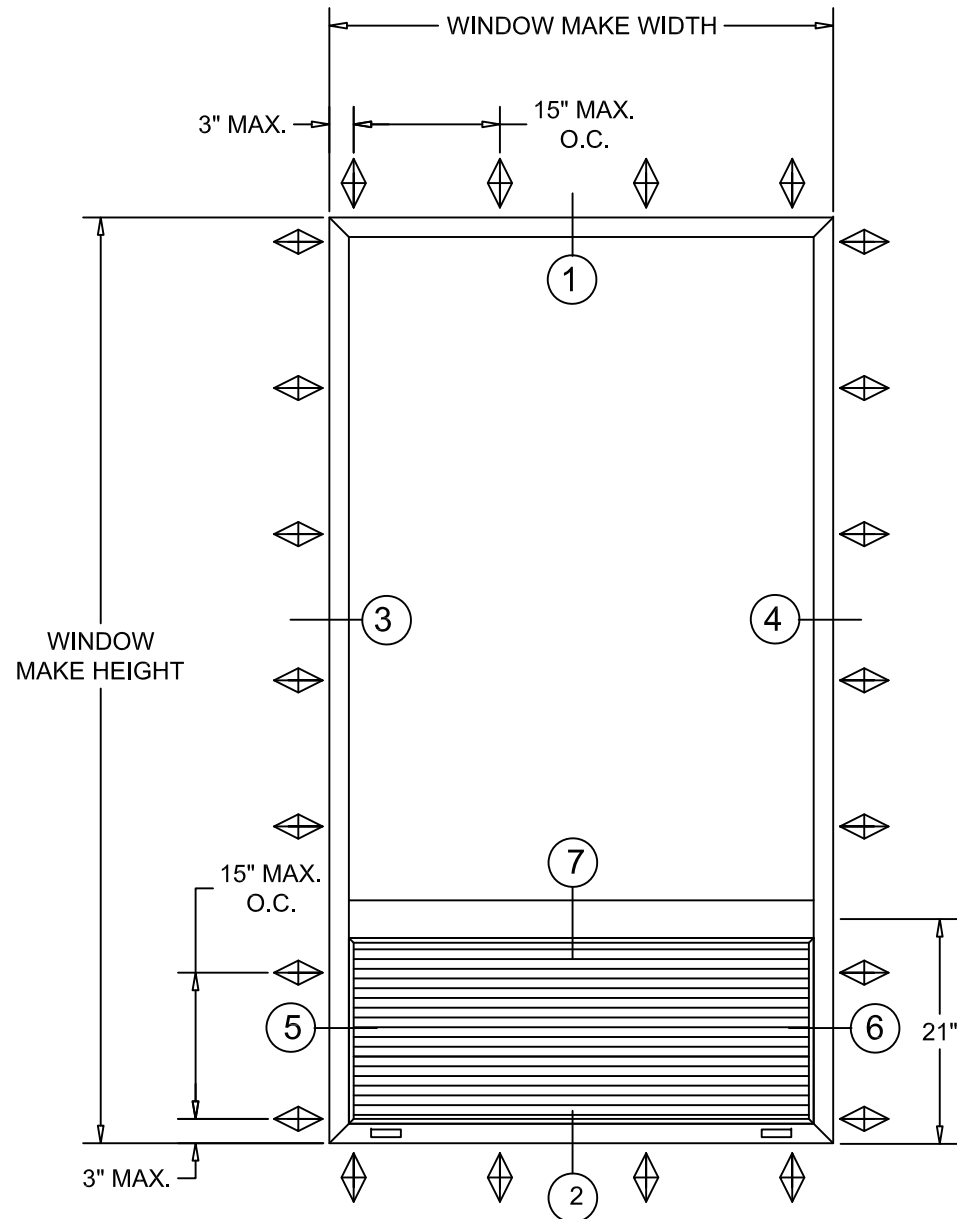


**NOTES:**

1. Installations depicted satisfy the requirements of the 2018 International Building Code for design wind pressures and overall sizes noted.
2. Wood bucks, wood framing, steel stud framing, concrete and concrete masonry are by others and shall be designed by the architect or engineer of record to resist the loads imparted to them.
3. Wood buck strips and wood frames are assumed S-P-F (G=0.42) or denser. Buck width shall be greater than the frame width. Tapered or partial width buck strips are not allowed.
4. Metal stud frames are assumed to be a minimum 18 gauge 33 KSI steel.
5. Wood screws shall be corrosion resistant and meet the requirements of ANSI/ASME B18.6.1
6. TEKS screws shall be corrosion resistant and shall be ASTM A510 Grade 1018 or equivalent.
7. Maximum permitted shim thickness is 1/4". Shims shall be non-compressible and load bearing type.
8. Products are impact resistant and do not require approved protection devices if used in wind-borne debris regions.



Maximum Dimensions and Design Pressure				
FW	FH	DLO-W	DLO-H	Pressure
60"	94"	56-1/4"	69-1/4"	Glass Area ≤ 22 ft <sup>2</sup> ± 65 PSF Missile D Wind Zone 4
				Glass Area > 22 ft <sup>2</sup> ± 57 PSF Missile D Wind Zone 4

ANCHOR SEE SHEETS 2/4 to 3/4

Minimum Glazing  
 1" Insulating Glass  
 EXT - 3/16" Annealed Glass  
 INT - 1/4" Laminated Glass  
 See Glazing Detail Sheet 4/4

SEE REPORT NCTL-110-23279-1  
 FOR SUPPORTING CALCULATIONS.

Louver  
 For use with PTAC units only  
 Maximum Opening Width: 56-1/4"  
 Maximum Opening Height: 17-1/2"



*Joseph A. Reed*

2020.05.06 08:47:01 -04'00'

Contents

- |              |                           |
|--------------|---------------------------|
| Sheet 1 of 4 | Elevations and Notes      |
| Sheet 2 of 4 | Fin Install to Wood       |
| Sheet 3 of 4 | Fin Install to Steel Stud |
| Sheet 4 of 4 | Components                |

Joseph A. Reed, PE  
 TX PE 100777  
 5 Leigh Drive  
 York, PA 17406  
 717-846-1200  
 Project No. 23279-1  
 Drawing No. 23279-1-1003

Project Name:  
**M700 FIXED OVER LOUVER**  
**PVB INTERLAYER**  
**INSTALLATION INSTRUCTIONS**

**ELEVATIONS AND NOTES**  
 QUAKER WINDOW PRODUCTS  
 WILL NOT BE RESPONSIBLE  
 FOR FIELD MEASUREMENT,  
 QUANTITIES, & INSTALLATION  
 DESIGN. CONTRACTOR MUST  
 VERIFY ALL DIMENSIONS.

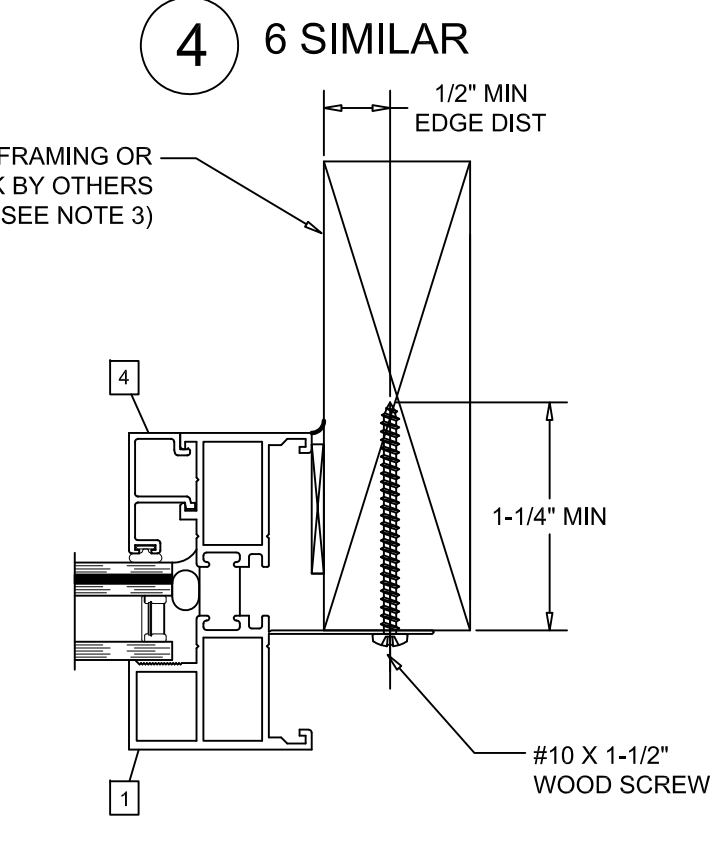
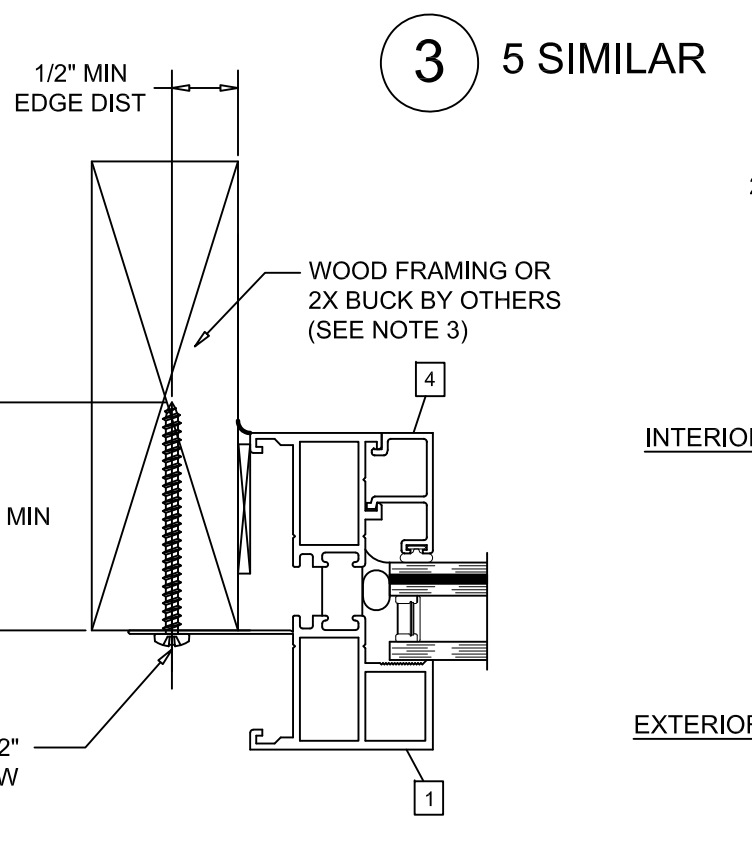
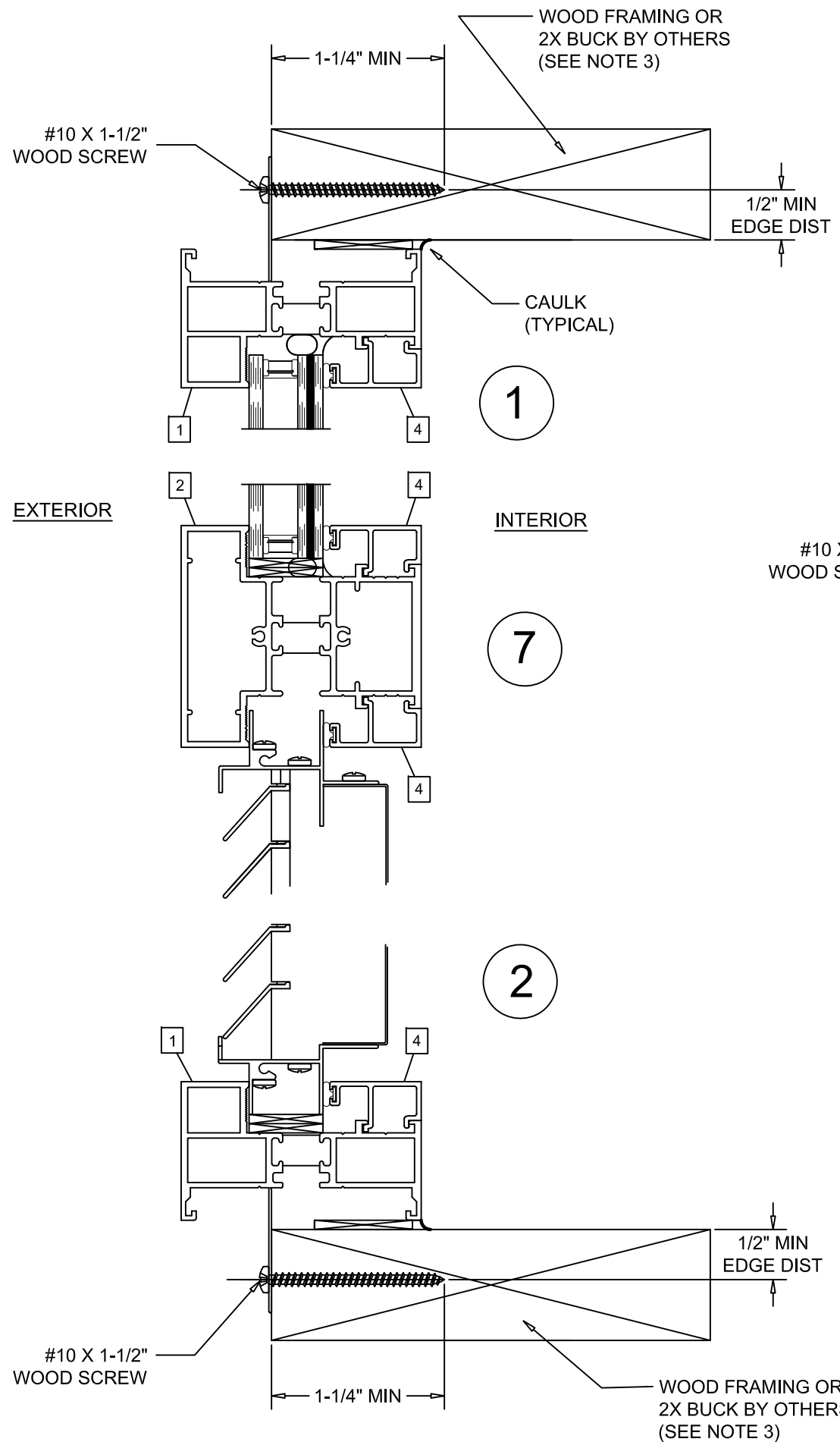
PHONE (573)-744-5211  
 FAX (573)-744-5586  
 COMMERCIAL  
 FAX (573)-744-5822  
 www.quakerwindows.com

Scale: NONE  
 Sheet #: 1 of 4

Drawn By: JAR  
 Date: 04-16-20

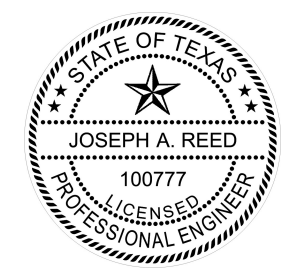
504 Highway 63 South  
 Freeburg, MO 65035  
 drafting@quakerwindows.com





HORIZONTAL SECTION DETAIL  
WOOD FRAMING INSTALLATION

VERTICAL SECTION DETAIL  
WOOD FRAMING INSTALLATION

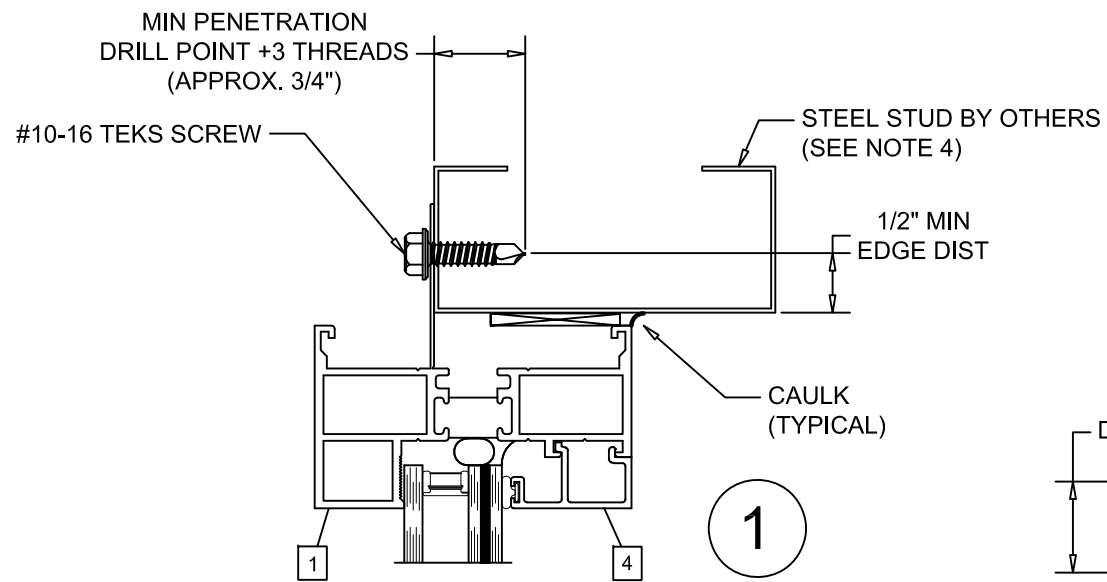


*Joseph A. Reed*

2020.05.06 08:47:01 -04'00'

Joseph A. Reed, PE  
TX PE 100777  
5 Leigh Drive  
York, PA 17406  
717-846-1200  
Project No. 23279-1  
Drawing No. 23279-1-1003

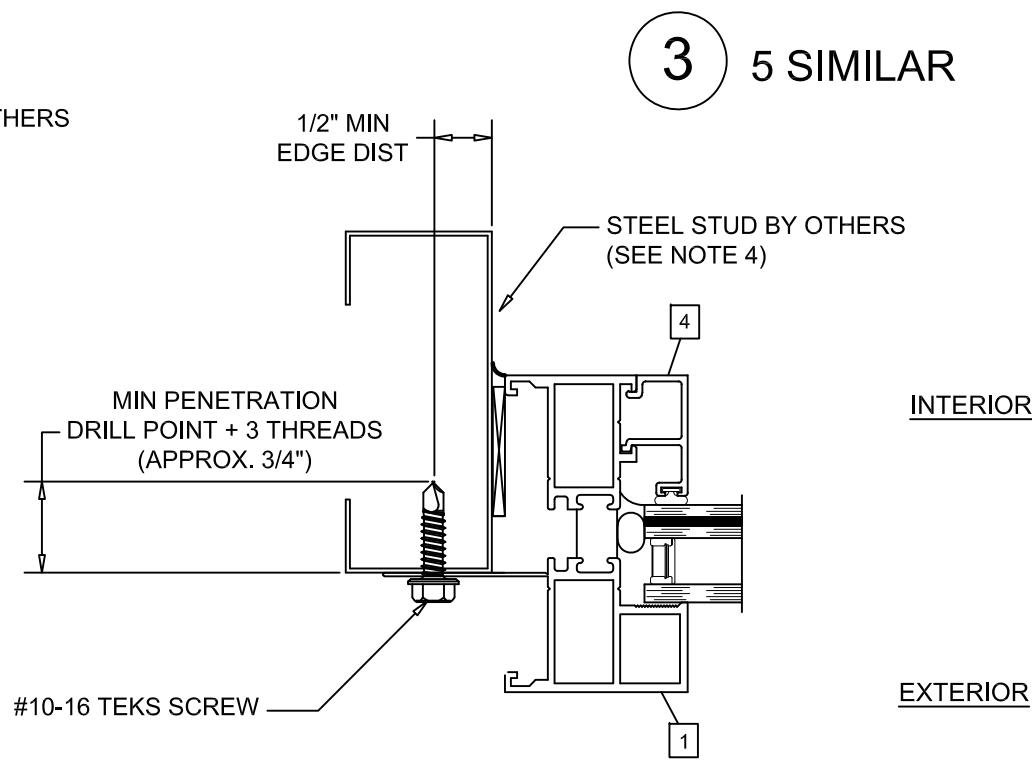
Project Name: <b>M700 FIXED OVER LOUVER PVB INTERLAYER</b>		INSTALLATION INSTRUCTIONS	
Description: <b>FIN INSTALL TO WOOD</b>		QUAKER WINDOW PRODUCTS WILL NOT BE RESPONSIBLE FOR FIELD MEASUREMENT, QUANTITIES, & INSTALLATION DESIGN. CONTRACTOR MUST VERIFY ALL DIMENSIONS.	
PHONE (573)-744-5211 FAX (573)-744-5586 COMMERCIAL FAX (573)-744-5822 www.quakerwindows.com	Scale: NONE	Sheet #: 2 of 4	
Drawn By: JAR	504 Highway 63 South Freeburg, MO 65035 drafting@quakerwindows.com		
Date: 04-16-20			



EXTERIOR

INTERIOR

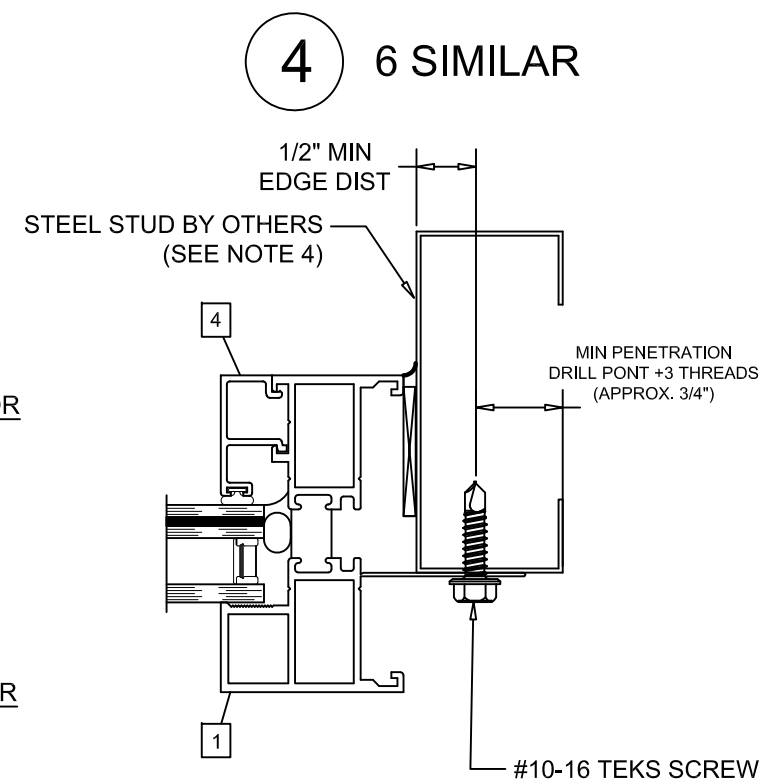
1



INTERIOR

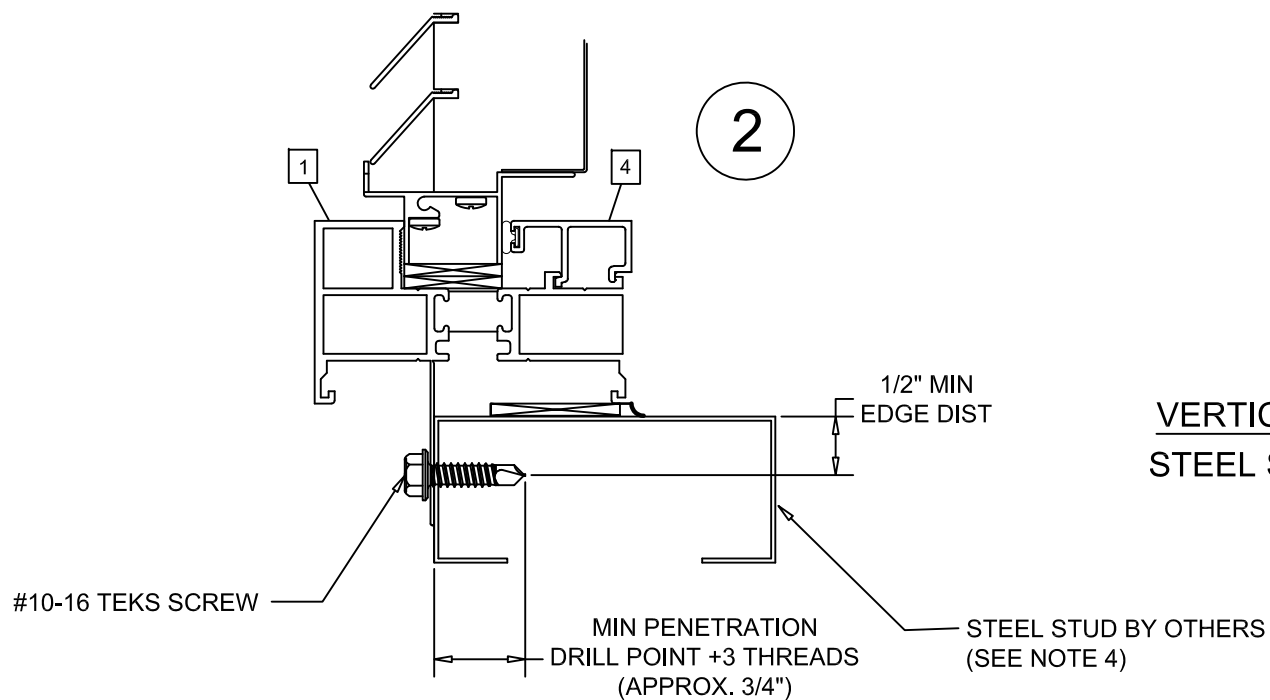
EXTERIOR

3 5 SIMILAR



4 6 SIMILAR

HORIZONTAL SECTION DETAIL  
STEEL STUD INSTALLATION



VERTICAL SECTION DETAIL  
STEEL STUD INSTALLATION

2



*Joseph A. Reed*

2020.05.06 08:47:01 -04'00'

Joseph A. Reed, PE  
TX PE 100777  
5 Leigh Drive  
York, PA 17406  
717-846-1200  
Project No. 23279-1  
Drawing No. 23279-1-1003

Project Name:  
**M700 FIXED OVER LOUVER  
PVB INTERLAYER**  
INSTALLATION INSTRUCTIONS

Description:  
**FIN INSTALL TO STEEL**

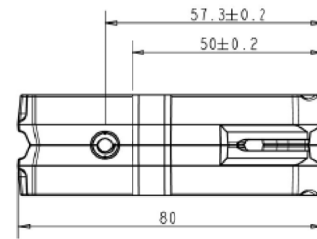
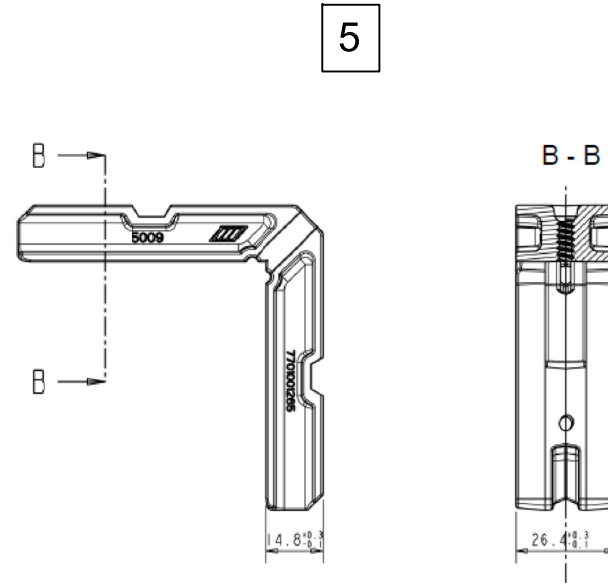
QUAKER WINDOW PRODUCTS  
WILL NOT BE RESPONSIBLE  
FOR FIELD MEASUREMENT,  
QUANTITIES, & INSTALLATION  
DESIGN. CONTRACTOR MUST  
VERIFY ALL DIMENSIONS.

PHONE (573)-744-5211  
FAX (573)-744-5586  
COMMERCIAL  
FAX (573)-744-5822  
www.quakerwindows.com

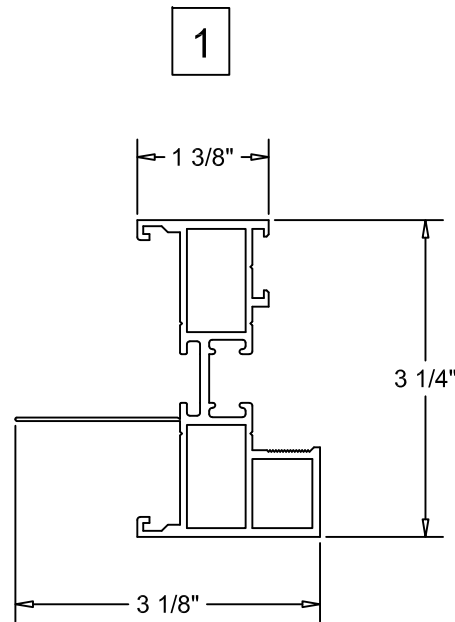


Scale: NONE  
Sheet #: 3 of 4  
Drawn By: JAR  
Date: 04-16-20  
504 Highway 63 South  
Freeburg, MO 65035  
drafting@quakerwindows.com

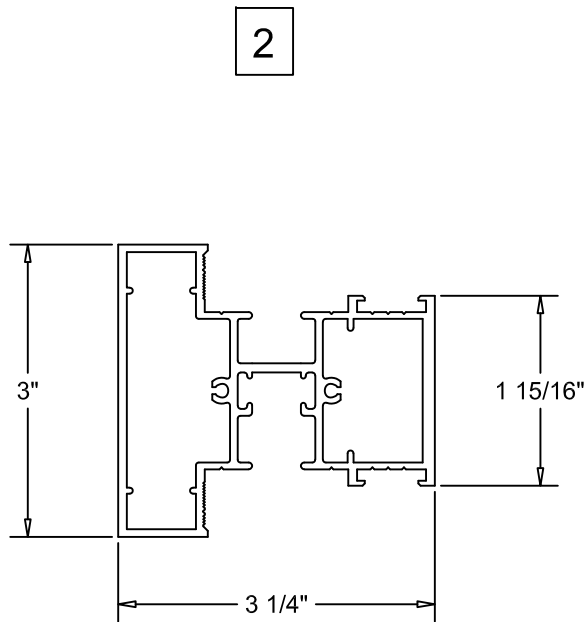
Bill of Materials				
Item	Description	Part No.	Material	Manufacturer
1	Fixed Window Frame	M52730	Alum. 6063-T6	Quaker
2	Horizontal Mullion	M56681	Alum. 6063-T6	Quaker
3				
4	Glazing Stop	M21195	Alum. 6063-T6	Quaker
5	Corner Key	5009 / 200	Die Cast Alum.	Monticelli
6	Corner Sealant	896TB	Silicone	Pecora
7	Backbedding	RGS7700	Silicone	GE
8	Structural Sealant	Dow Corning 995	Silicone	Dow Corning



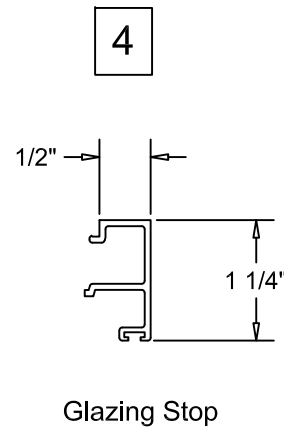
Corner Key  
(Cast Aluminum)  
(Metric Dimensions, Not to Scale)



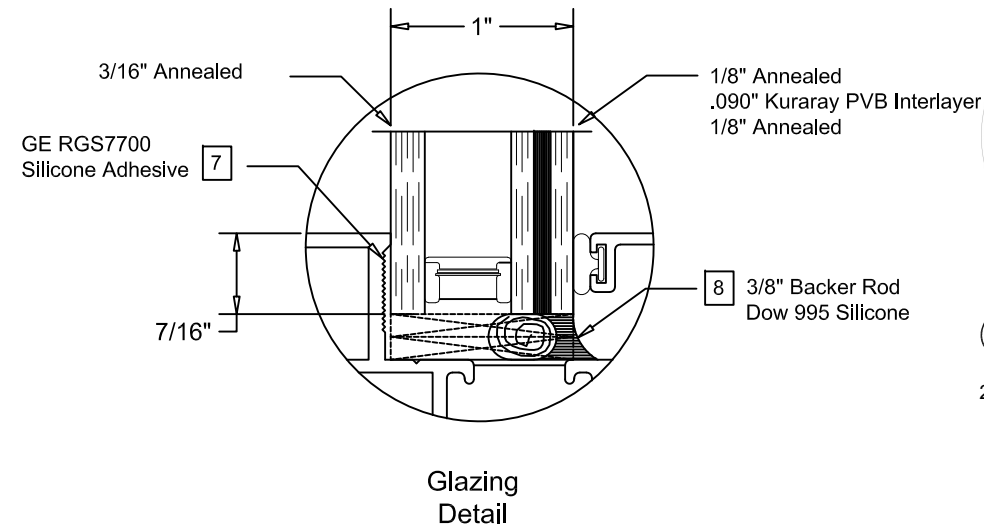
Fixed Window Frame



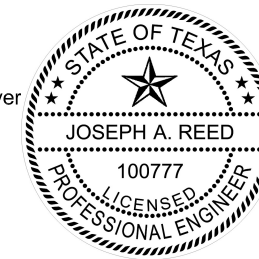
Horizontal Mullion



Glazing Stop



Glazing Detail



*Joseph A. Reed*

2020.05.06 08:47:01 -04'00'

Joseph A. Reed, PE  
TX PE 100777  
5 Leigh Drive  
York, PA 17406  
717-846-1200  
Project No. 23279-1  
Drawing No. 23279-1-1003

Project Name:  
**M700 FIXED OVER LOUVER  
PVB INTERLAYER  
INSTALLATION INSTRUCTIONS**

**COMPONENTS**

Description:

QUAKER WINDOW PRODUCTS  
WILL NOT BE RESPONSIBLE  
FOR FIELD MEASUREMENT,  
QUANTITIES, & INSTALLATION  
DESIGN. CONTRACTOR MUST  
VERIFY ALL DIMENSIONS.

	PHONE (573)-744-5211 FAX (573)-744-5586 COMMERCIAL FAX (573)-744-5822 www.quakerwindows.com	Scale: NONE Sheet #: 4 of 4
	504 Highway 63 South Freeburg, MO 65035 drafting@quakerwindows.com	Drawn By: JAR Date: 04-16-20