

WINTECH - WINDOW TECHNOLOGY, INC.

SERIES 225 SINGLE HUNG WINDOW NON-IMPACT

WINTECH

WINDOW TECHNOLOGY, INC.

201 INDUSTRIAL DRIVE
MONETT, MO 65708
WWW.WINTECHINC.COM

PH: (417) 235-7821 FX: (417) 737-7140

TITLE:
SERIES 225 SINGLE HUNG
WINDOW (NON IMPACT)
GENERAL, INSTALLATION NOTES
AND GLAZING DETAILS

PREPARED BY:
BUILDING DROPS, INC.

398 E. DANIA BEACH BLVD., STE. 338
DANIA BEACH, FL 33004
PH: (954) 999-8478
FAX: (954) 744-4738
WEB: www.buildingdrops.com



TABLE OF CONTENTS		
SHEET	REVISION	SECTION DESCRIPTION
1	-	GENERAL NOTES & GLAZING DETAILS
2	-	ELEVATIONS AND ANCHOR LAYOUTS
3	-	VERTICAL SECTIONS
4	-	HORIZONTAL SECTIONS
5	-	COMPONENTS & BILL OF MATERIALS

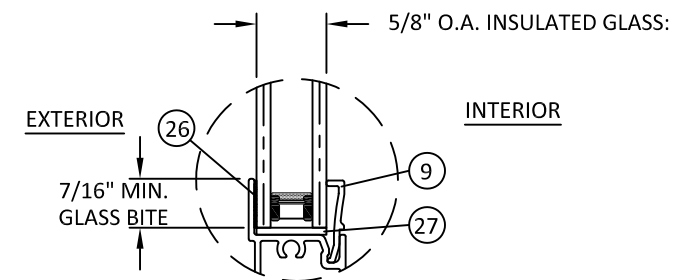
INSTALLATION NOTES:

- ONE (1) INSTALLATION ANCHOR IS REQUIRED AT EACH ANCHOR LOCATION SHOWN, UNLESS OTHERWISE STATED.
- THE NUMBER OF INSTALLATION ANCHORS DEPICTED IS THE MINIMUM NUMBER OF ANCHORS TO BE USED FOR PRODUCT INSTALLATION.
- INSTALL INDIVIDUAL INSTALLATION ANCHORS WITHIN A TOLERANCE OF ±1/2 INCH OF THE DEPICTED LOCATION IN THE ANCHOR LAYOUT DETAIL (I.E., WITHOUT CONSIDERATION OF TOLERANCES). TOLERANCES ARE NOT CUMULATIVE FROM ONE INSTALLATION ANCHOR TO THE NEXT.
- NAILING FIN:** FOR INSTALLATION THROUGH 2X WOOD FRAME USE ONE (1) #8 PAN HEAD WOOD SCREW PER LOCATION OF SUFFICIENT LENGTH TO ACHIEVE 1 1/2 INCH MINIMUM EMBEDMENT INTO WOOD SUBSTRATE.
- NAILING FIN:** FOR INSTALLATION THROUGH METAL STUD USE ONE (1) #8 SELF-TAPPING HWH SCREW OF SUFFICIENT LENGTH TO ACHIEVE 3 THREADS MINIMUM PENETRATION BEYOND METAL STRUCTURE.
- MINIMUM EMBEDMENT AND EDGE DISTANCE EXCLUDE WALL FINISHES, INCLUDING BUT NOT LIMITED TO STUCCO, FOAM, BRICK VENEER, AND SIDING.
- INSTALLATION ANCHORS AND ASSOCIATED HARDWARE MUST BE MADE OF CORROSION RESISTANT MATERIAL OR HAVE A CORROSION RESISTANT COATING.
- FOR GROUT FILLED BLOCK, DO NOT INSTALL INSTALLATION ANCHORS INTO MORTAR JOINTS. EDGE DISTANCE IS MEASURED FROM FREE EDGE OF BLOCK OR EDGE OF MORTAR JOINT INTO FACE SHELL OF BLOCK.
- INSTALLATION ANCHORS SHALL BE INSTALLED IN ACCORDANCE WITH ANCHOR MANUFACTURER'S INSTALLATION INSTRUCTIONS, AND ANCHORS SHALL NOT BE USED IN SUBSTRATES WITH STRENGTHS LESS THAN THE MINIMUM STRENGTH SPECIFIED BY THE ANCHOR MANUFACTURER.
- INSTALLATION ANCHOR CAPACITIES FOR PRODUCTS HEREIN ARE BASED ON SUBSTRATE MATERIALS WITH THE FOLLOWING PROPERTIES:
 - WOOD - MINIMUM SPECIFIC GRAVITY OF 0.42
 - STEEL - MINIMUM YIELD STRENGTH OF 33 KSI. MINIMUM WALL THICKNESS OF 33 MILS. (20 GAUGE)
 - ALUMINUM - 1/8" MINIMUM THICKNESS (6063-T5).

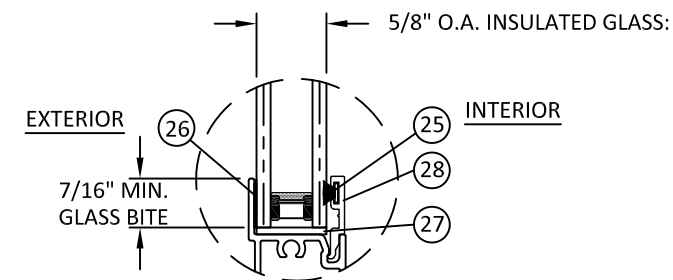
GENERAL NOTES:

- THE PRODUCT SHOWN HEREIN IS DESIGNED AND MANUFACTURED TO COMPLY WITH THE 2018 INTERNATIONAL BUILDING CODE (IBC) AND 2018 INTERNATIONAL RESIDENTIAL CODE (IRC) HAS BEEN EVALUATED ACCORDING TO THE FOLLOWING:
 - AAMA/WDMA/CSA 101/I.S.2/A440-11
- ADEQUACY OF THE EXISTING STRUCTURAL CONCRETE/MASONRY, 2X AND METAL STUD FRAMING AS A MAIN WIND FORCE RESISTING SYSTEM CAPABLE OF WITHSTANDING AND TRANSFERRING APPLIED PRODUCT LOADS TO THE FOUNDATION IS THE RESPONSIBILITY OF THE ENGINEER OR ARCHITECT OF RECORD FOR THE PROJECT OF INSTALLATION.
- 1X AND 2X BUCKS (WHEN USED) SHALL BE DESIGNED AND ANCHORED TO PROPERLY TRANSFER ALL LOADS TO THE STRUCTURE. BUCK DESIGN AND INSTALLATION IS THE RESPONSIBILITY OF THE ENGINEER OR ARCHITECT OF RECORD FOR THE PROJECT OF INSTALLATION.
- THE INSTALLATION DETAILS DESCRIBED HEREIN ARE GENERIC AND MAY NOT REFLECT ACTUAL CONDITIONS FOR A SPECIFIC SITE. IF SITE CONDITIONS CAUSE INSTALLATION TO DEVIATE FROM THE REQUIREMENTS DETAILED HEREIN, A LICENSED ENGINEER OR ARCHITECT SHALL PREPARE SITE SPECIFIC DOCUMENTS FOR USE WITH THIS DOCUMENT.
- APPROVED IMPACT PROTECTIVE SYSTEM IS REQUIRED TO PROTECT THIS PRODUCT IN AREAS REQUIRING IMPACT RESISTANCE.
- WINDOW FRAME MATERIAL: ALUMINUM 6063-T6.
- GLASS SHALL MEET THE REQUIREMENTS OF ASTM E1300-04 GLASS CHARTS. SEE SHEET 1 FOR GLAZING DETAILS.
- DESIGNATIONS "X" AND "O" STAND FOR THE FOLLOWING:
X: OPERABLE PANEL
O: FIXED PANEL
- CUSTOM SIZES AVAILABLE UPON REQUEST.

DESIGN PRESSURE			
MAX. OVERALL SIZE		DESIGN PRESSURE	IMPACT RATING
WIDTH	HEIGHT		
44.0"	75.0"	±30 PSF	NON-IMPACT RATED
36.0"	60.0"	±50 PSF	



GLAZING DETAIL 1
FOR UNITS ABOVE 30 PSF



GLAZING DETAIL 2

GLAZING NOTES:

- GLASS TYPE SHALL COMPLY WITH ASTM E1300 REQUIREMENTS AS WELL AS APPLICABLE SAFETY GLAZING REQUIREMENTS PER THE IBC. TEMPER AND SAFETY GLAZING REQUIREMENTS SHALL BE REVIEWED ON A SITE SPECIFIC BASIS.

THE INSTALLATION DETAILS DESCRIBED HEREIN ARE GENERIC AND MAY NOT REFLECT ACTUAL CONDITIONS FOR A SPECIFIC SITE. IF SITE CONDITIONS CAUSE INSTALLATION TO DEVIATE FROM THE REQUIREMENTS DETAILED HEREIN, A LICENSED ENGINEER OR ARCHITECT SHALL PREPARE SITE SPECIFIC DOCUMENTS FOR USE WITH THIS DOCUMENT.



HERMES F. NORERO, P.E.
TEXAS P.E. No 118471
BUILDING DROPS, INC
398 E. DANIA BEACH BLVD. # 338
DANIA BEACH, FL 33004
TBPE CERT. OF AUTHORIZATION No. 13734

DATE: 10.28.2019

DWG. BY: RV CHK. BY: HFN

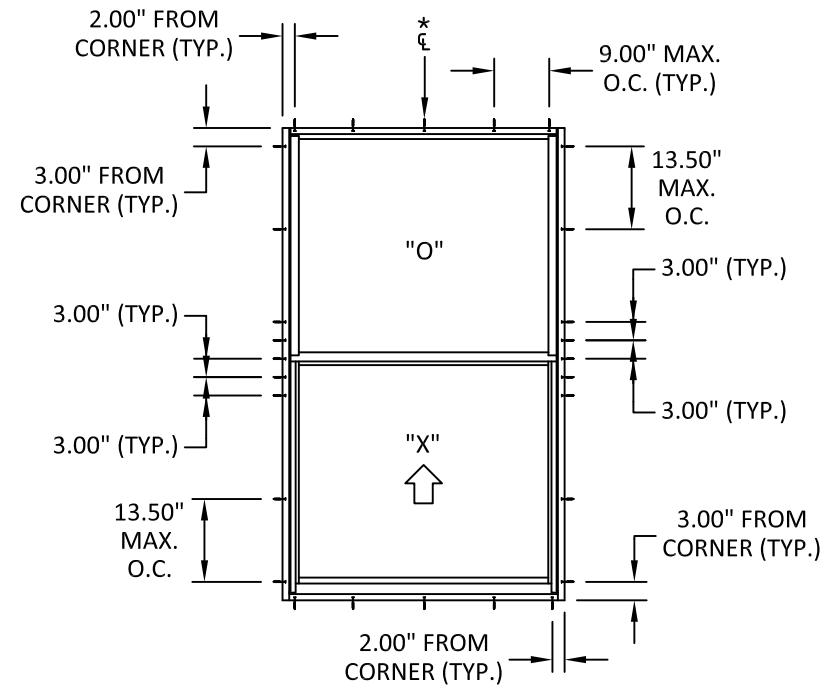
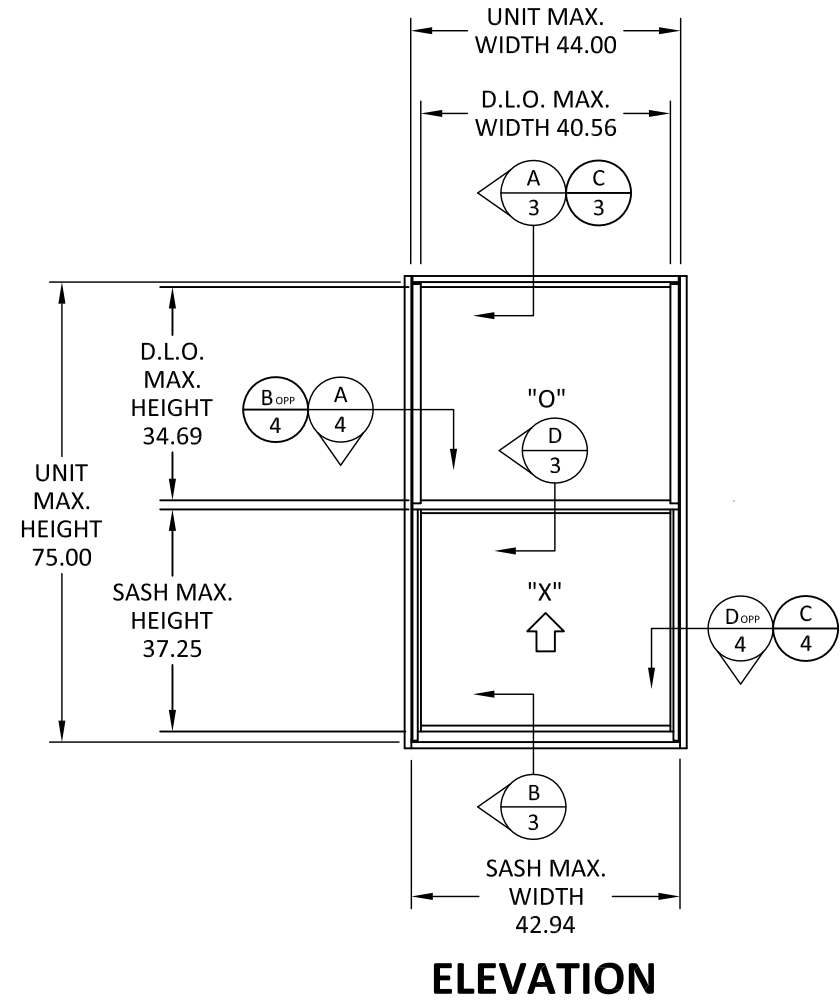
SCALE: NTS

DWG. #: WNT002

SHEET:

1

OF 5



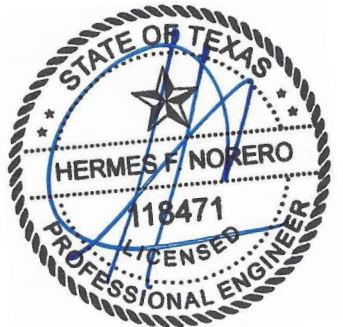
NOTE:
* USE ANCHORS AT ϵ OF HEAD AND SILL OF WINDOWS WIDER THAN 31".

TITLE: SERIES 225 SINGLE HUNG WINDOW (NON IMPACT)
ELEVATIONS AND ANCHORS LAYOUT

PREPARED BY: BUILDING DROPS, INC.
398 E. DANIA BEACH BLVD., STE. 338
DANIA BEACH, FL 33004
PH: (954) 999-8478
FAX: (954) 744-4738
WEB: www.buildingdrops.com

REMARKS	BY	DATE

THE INSTALLATION DETAILS DESCRIBED HEREIN ARE GENERIC AND MAY NOT REFLECT ACTUAL CONDITIONS FOR A SPECIFIC SITE. IF SITE CONDITIONS CAUSE INSTALLATION TO DEVIATE FROM THE REQUIREMENTS DETAILED HEREIN, A LICENSED ENGINEER OR ARCHITECT SHALL PREPARE SITE SPECIFIC DOCUMENTS FOR USE WITH THIS DOCUMENT.



HERMES F. NORERO, P.E.
TEXAS P.E. No 118471
BUILDING DROPS, INC
398 E. DANIA BEACH BLVD. # 338
DANIA BEACH, FL 33004
TBPE CERT. OF AUTHORIZATION No. 13734

DATE: 10.28.2019	
DWG. BY: RV	CHK. BY: HFN
SCALE: NTS	
DWG. #: WNT002	
SHEET:	

s:\projects\wintech\tdi-19-1048 - rdi submittal - series 225 single hung window\dwgs\wnt002-225-sh.dwg 6/11/2020 8:39 AM

TITLE: SERIES 225 SINGLE HUNG WINDOW (NON IMPACT)

VERTICAL SECTIONS

PREPARED BY: **BUILDING DROPS, INC.**
398 E. DANIA BEACH BLVD., STE. 338
DANIA BEACH, FL 33004
PH: (954) 999-8478
FAX: (954) 744-4738
WEB: www.buildingdrops.com



REMARKS	BY	DATE

THE INSTALLATION DETAILS DESCRIBED HEREIN ARE GENERIC AND MAY NOT REFLECT ACTUAL CONDITIONS FOR A SPECIFIC SITE. IF SITE CONDITIONS CAUSE INSTALLATION TO DEVIATE FROM THE REQUIREMENTS DETAILED HEREIN, A LICENSED ENGINEER OR ARCHITECT SHALL PREPARE SITE SPECIFIC DOCUMENTS FOR USE WITH THIS DOCUMENT.



HERMES F. NORERO, P.E.
TEXAS P.E. No 118471
BUILDING DROPS, INC
398 E. DANIA BEACH BLVD. # 338
DANIA BEACH, FL 33004
TBPE CERT. OF AUTHORIZATION No. 13734

DATE: 10.28.2019

DWG. BY: RV CHK. BY: HFN

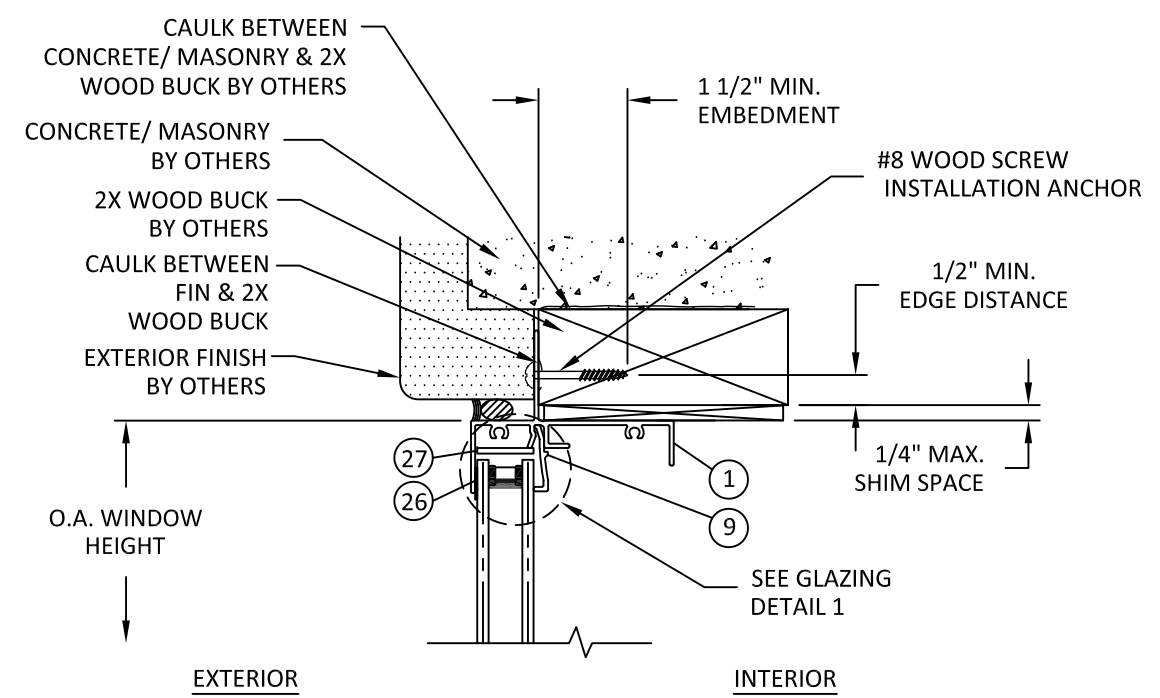
SCALE: NTS

DWG. #: WNT002

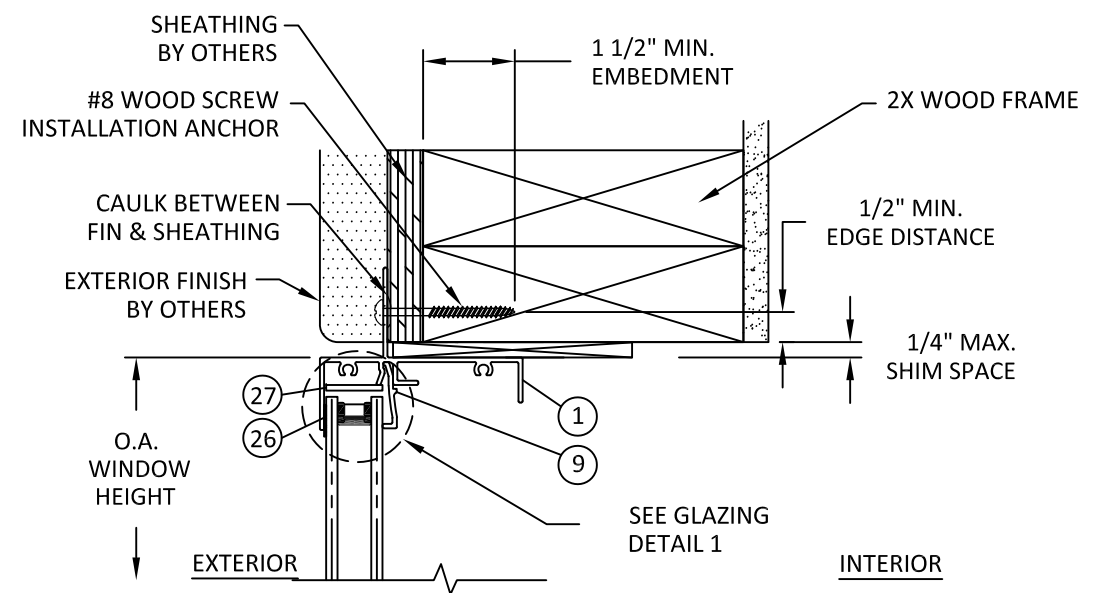
SHEET:

3

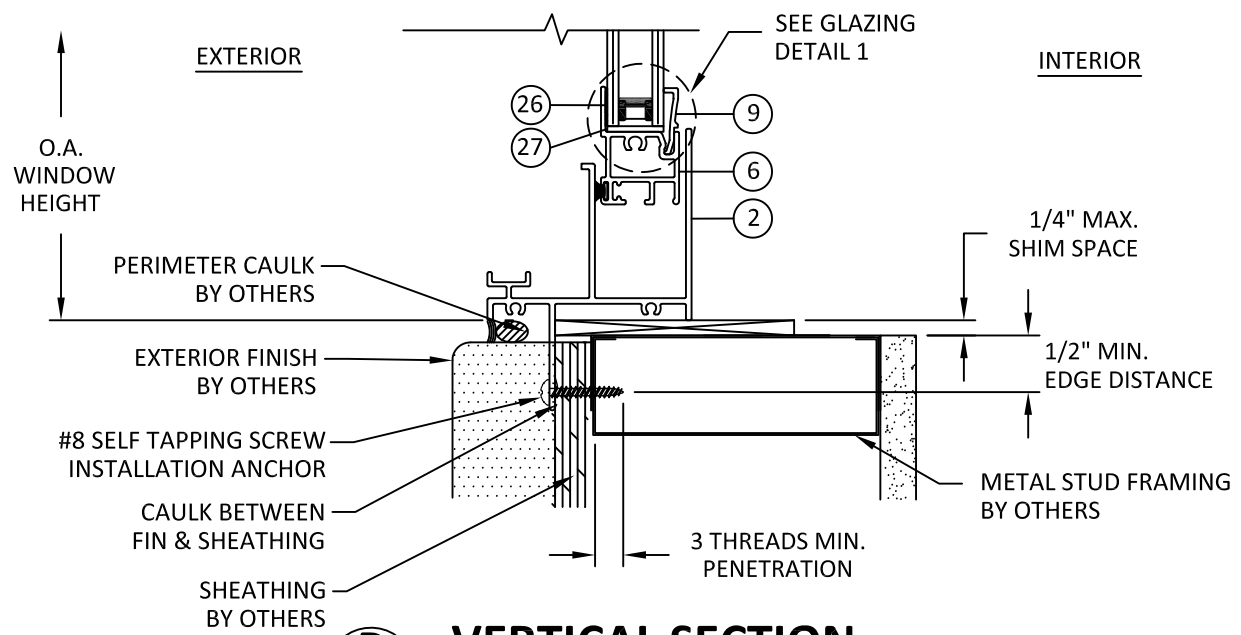
OF 5



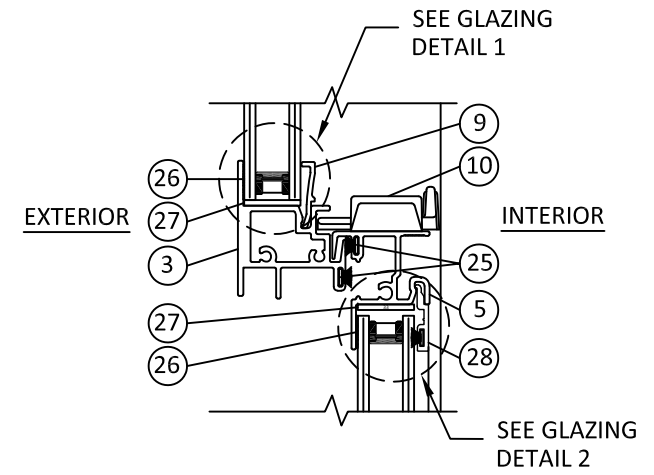
A
3 VERTICAL SECTION
HEAD - 2X WOOD BUCK
NAIL FIN INSTALLATION



C
3 VERTICAL SECTION
HEAD - 2X WOOD FRAME
NAIL FIN INSTALLATION



B
3 VERTICAL SECTION
SILL - METAL STUD FRAME
NAIL FIN INSTALLATION



D
3 VERTICAL SECTION
MEETING RAIL

6/11/2020 8:39 AM s:\projects\wintech\tdi-19-1048 - rdi submittal - series 225 single hung window\dwgs\wnt002-225-sh.dwg

TITLE: SERIES 225 SINGLE HUNG WINDOW (NON IMPACT) HORIZONTAL SECTIONS

PREPARED BY: BUILDING DROPS, INC.
398 E. DANIA BEACH BLVD., STE. 338
DANIA BEACH, FL 33004
PH: (954) 999-8478
FAX: (954) 744-4738
WEB: www.buildingdrops.com



REMARKS	BY	DATE

THE INSTALLATION DETAILS DESCRIBED HEREIN ARE GENERIC AND MAY NOT REFLECT ACTUAL CONDITIONS FOR A SPECIFIC SITE. IF SITE CONDITIONS CAUSE INSTALLATION TO DEVIATE FROM THE REQUIREMENTS DETAILED HEREIN, A LICENSED ENGINEER OR ARCHITECT SHALL PREPARE SITE SPECIFIC DOCUMENTS FOR USE WITH THIS DOCUMENT.



HERMES F. NORERO, P.E.
TEXAS P.E. No 118471
BUILDING DROPS, INC
398 E. DANIA BEACH BLVD. # 338
DANIA BEACH, FL 33004
TBPE CERT. OF AUTHORIZATION No. 13734

DATE: 10.28.2019

DWG. BY: RV CHK. BY: HFN

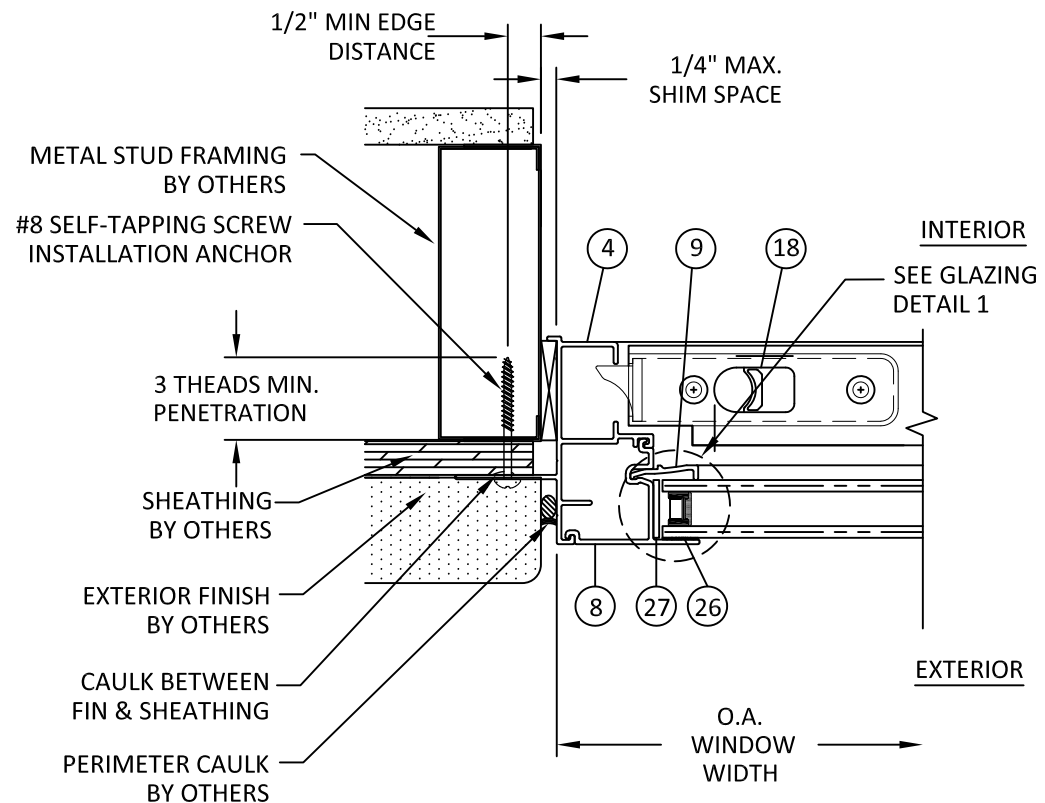
SCALE: NTS

DWG. #: WNT002

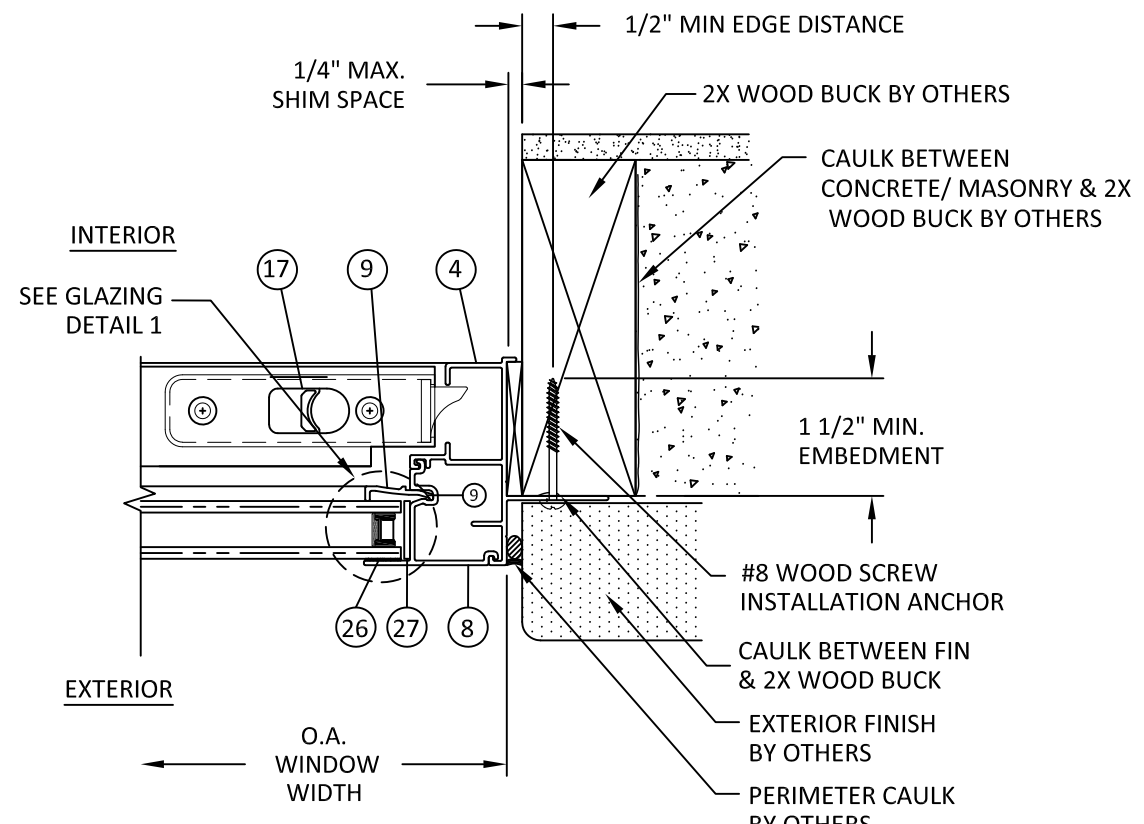
SHEET:

4

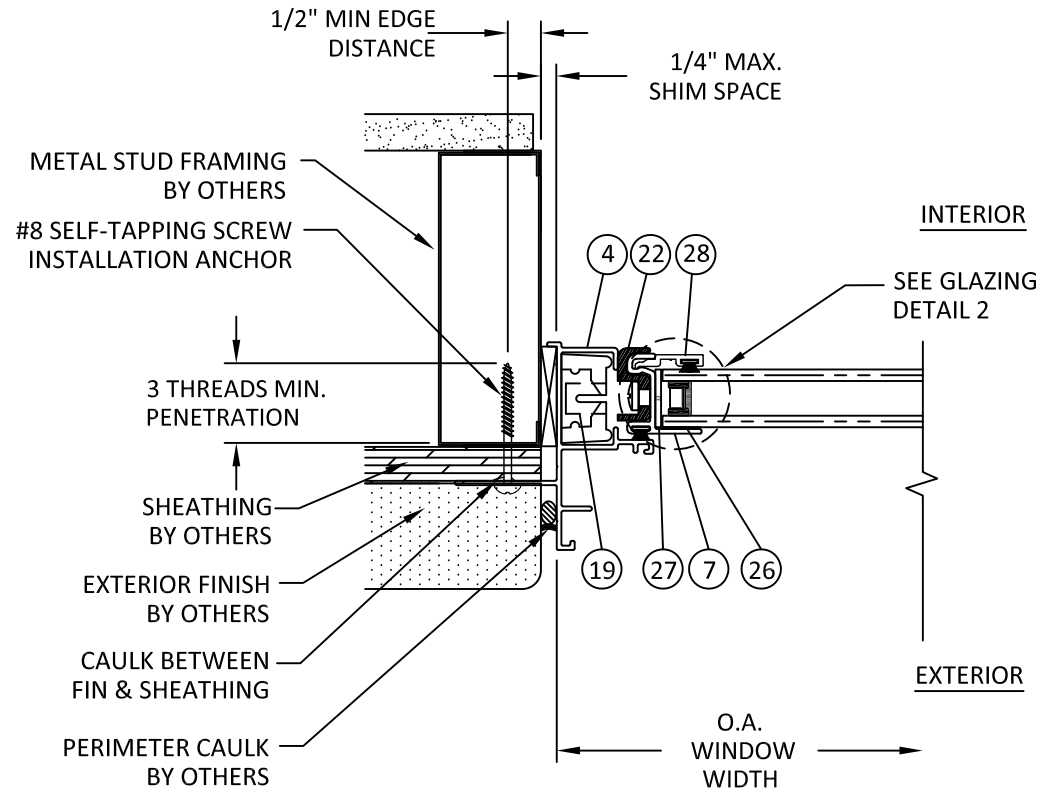
OF 5



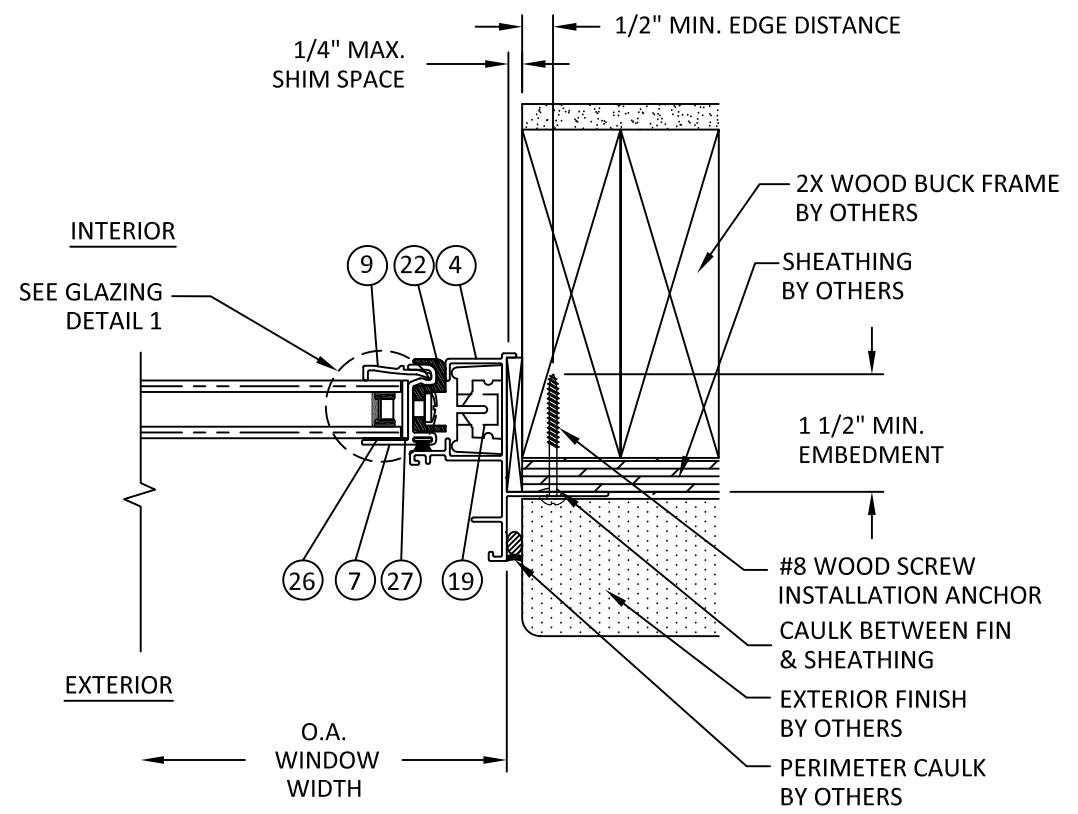
A
4 HORIZONTAL SECTION
FX JAMB - METAL STUD FRAME
NAIL FIN INSTALLATION



B
4 HORIZONTAL SECTION
FX JAMB - 2X WOOD BUCK
NAIL FIN INSTALLATION



C
4 HORIZONTAL SECTION
OP JAMB - METAL STUD FRAME
NAIL FIN INSTALLATION

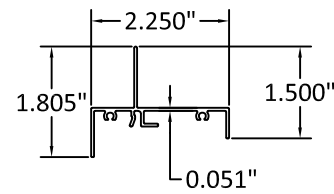


D
4 HORIZONTAL SECTION
OP JAMB - 2X WOOD FRAME
NAIL FIN INSTALLATION

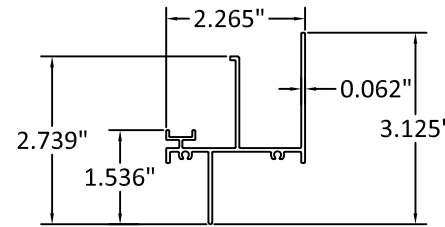
6/11/2020 8:39 AM s:\projects\wintech\tdi-19-1048 - ddi submittal - series 225 single hung window\dwgs\wnt002-225.sh.dwg

BILL OF MATERIAL			
NO.	PART NUMBER	DESCRIPTION	MANUFACTURER
1	E186	FRAME HEAD	PLY GEM / ALENCO
2	E756	FRAME SILL	PLY GEM / ALENCO
3	E787	FIXED MTG RAIL	PLY GEM / ALENCO
4	E788	FRAME JAMB	PLY GEM / ALENCO
5	E103	SASH HANDLE RAIL	PLY GEM / ALENCO
6	E125	SASH BOTTOM RAIL	PLY GEM / ALENCO
7	E102	SASH RAIL	PLY GEM / ALENCO
8	E100	UPPER FRAME ADAPTOR	PLY GEM / ALENCO
9	V01	VINYL GLAZING BEAD	QUALPRO
10	610	SWEEP LOCK	ROYAL
11	SL02	SASH ASSEMBLY SCREW	ALLOY
12	SL01	FRAME ASSEMBLY SCREW	ALLOY
13	95	TILT LATCH SCREW	ALLOY
14	96	LOCK SCREW	ALLOY
15	AT27-R	SASH BALANCE	CALDWELL
16	796	BALANCE SCREW	ALLOY
17	67805	LH TILT LATCH	HILL
18	67806	RH TILT LATCH	HILL
19	16T225	PIVOT SHOES	CALDWELL
20	16T19	PIVOT BAR W/SCREWS	CALDWELL
21	797	HEAD AND SILL GASKET	SECON
22	877	SASH GUIDES	FOSHAN
23	SMSL007	SEAM SEALANT	PECORA
24	613	SASH STOPS	WINTECH
25	72	SASH WEATHERSTRIP	AMESTEX
26	8FT	GLAZING SEALANT	PECORA
27	33	EDGE BLOCK	SECON
28	E519	SASH ALUM. GLAZING BEAD	GATEWAY

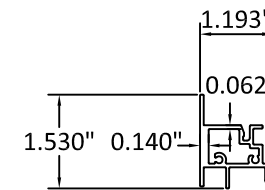
1 FRAME HEAD



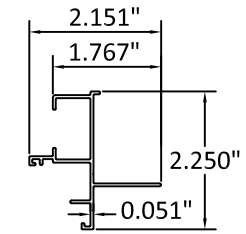
2 FRAME SILL



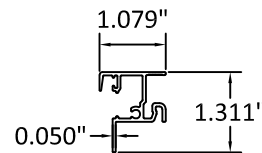
3 FIXED MTG RAIL



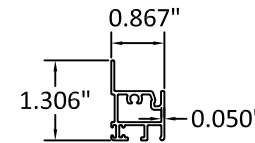
4 FRAME JAMB



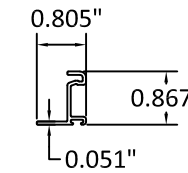
5 SASH HANDLE RAIL



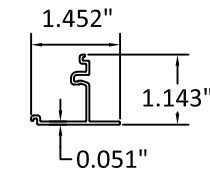
6 SASH BOTTOM RAIL



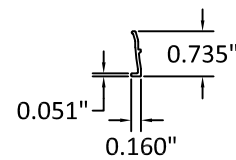
7 SASH RAIL



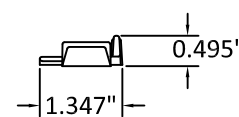
8 UPPER FRAME ADAPTOR



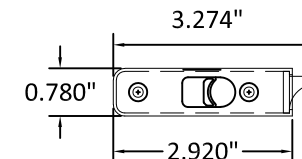
9 VINYL GLAZING BEAD



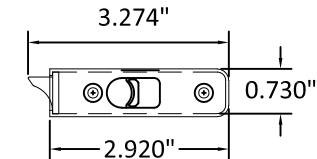
10 SWEEP LOCK



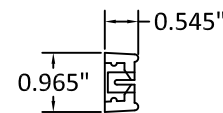
17 LH TILT LATCH



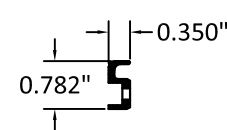
18 RH TILT LATCH



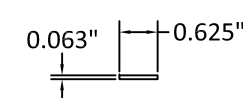
19 PIVOT SHOES



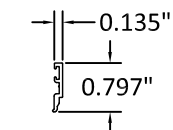
22 SASH GUIDES



27 EDGE BLOCK



28 SASH ALUMINUM GLAZING BEAD



TITLE: SERIES 225 SINGLE HUNG WINDOW (NON IMPACT) COMPONENTS AND BILL OF MATERIALS

PREPARED BY: BUILDING DROPS, INC.
398 E. DANIA BEACH BLVD., STE. 338
DANIA BEACH, FL 33004
PH: (954) 959-8478
FAX: (954) 744-4738
WEB: www.buildingdrops.com

REMARKS	BY	DATE

THE INSTALLATION DETAILS DESCRIBED HEREIN ARE GENERIC AND MAY NOT REFLECT ACTUAL CONDITIONS FOR A SPECIFIC SITE. IF SITE CONDITIONS CAUSE INSTALLATION TO DEVIATE FROM THE REQUIREMENTS DETAILED HEREIN, A LICENSED ENGINEER OR ARCHITECT SHALL PREPARE SITE SPECIFIC DOCUMENTS FOR USE WITH THIS DOCUMENT.



HERMES F. NORERO, P.E.
TEXAS P.E. No. 118471
BUILDING DROPS, INC
398 E. DANIA BEACH BLVD. # 338
DANIA BEACH, FL 33004
TBPE CERT. OF AUTHORIZATION No. 13734

DATE: 10.28.2019	
DWG. BY: RV	CHK. BY: HFN
SCALE: NTS	
DWG. #: WNT002	
SHEET:	

s:\projects\wintech\tdi-19-1048 - ddi submittal - series 225 single hung window\dwgs\wnt002-225-sh.dwg 6/11/2020 8:39 AM