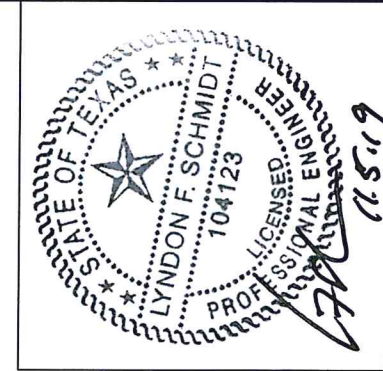


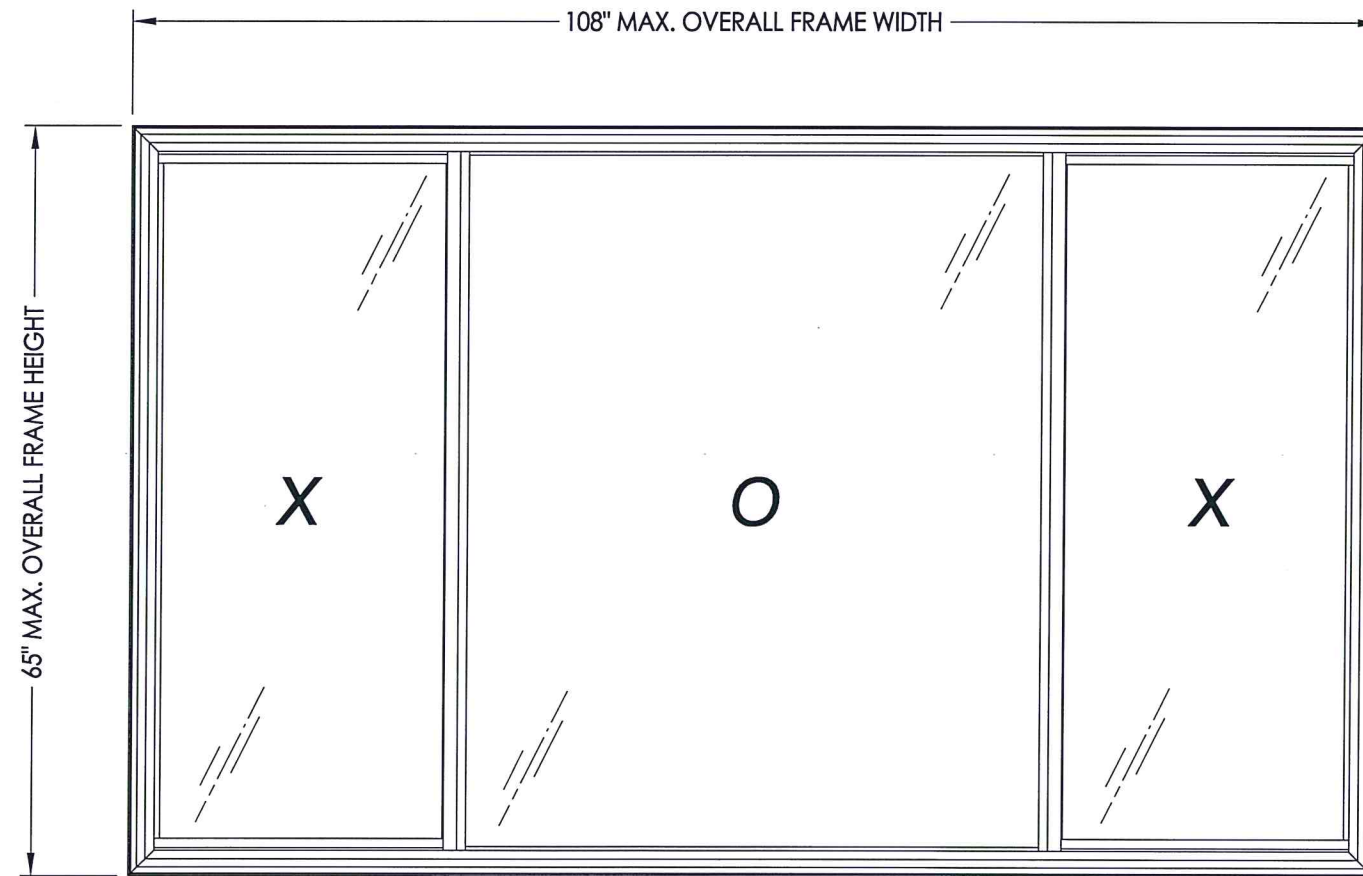
**COASTAL PERFORMANCE**  
by Sunrise Windows, LTD.



Documents Prepared By: Lyndon F. Schmidt, P.E.  
TEXAS P.E. #104123

**RW** BUILDING CONSULTANTS, INC.  
P.O. Box 230 Vairico FL, 33595  
Phone No.: 813.659.9197  
TEXAS BOARD OF PROFESSIONAL ENGINEERS  
CERTIFICATE OF REGISTRATION # F-11852

# Coastal Performance Horizontal Sliding Window "IMPACT"



**EVALUATED FOR USE IN THE STATE OF TEXAS**

The Horizontal Sliding Window described herein complies with the 2018 International Residential Code (IRC), Sections R301 & R609 and the 2018 International Building Code (IBC), Sections 1404.13, 1609, 1709.5, 2403 and 2404 subject to the following conditions:

1. Anchors shall be as listed and spaced as shown in the details. Anchor embedment to base material shall be beyond roof covering.
2. When used in areas requiring wind-borne debris protection (Seaward and Inland I areas), this product complies with Section R301.2.1.2 of the IRC and Section 1609.2 of the IBC and does not require impact protection. This product meets missile-level "D" and includes Wind Zone 3 as defined in ASTM E 1996.
3. Allowable design pressure requirements must be equal to or less than the design pressure rating shown in the design pressure chart, sheet 1 of this drawing.
4. Conditions not covered by this drawing are subject to further engineering analysis.

**TABLE OF CONTENTS**

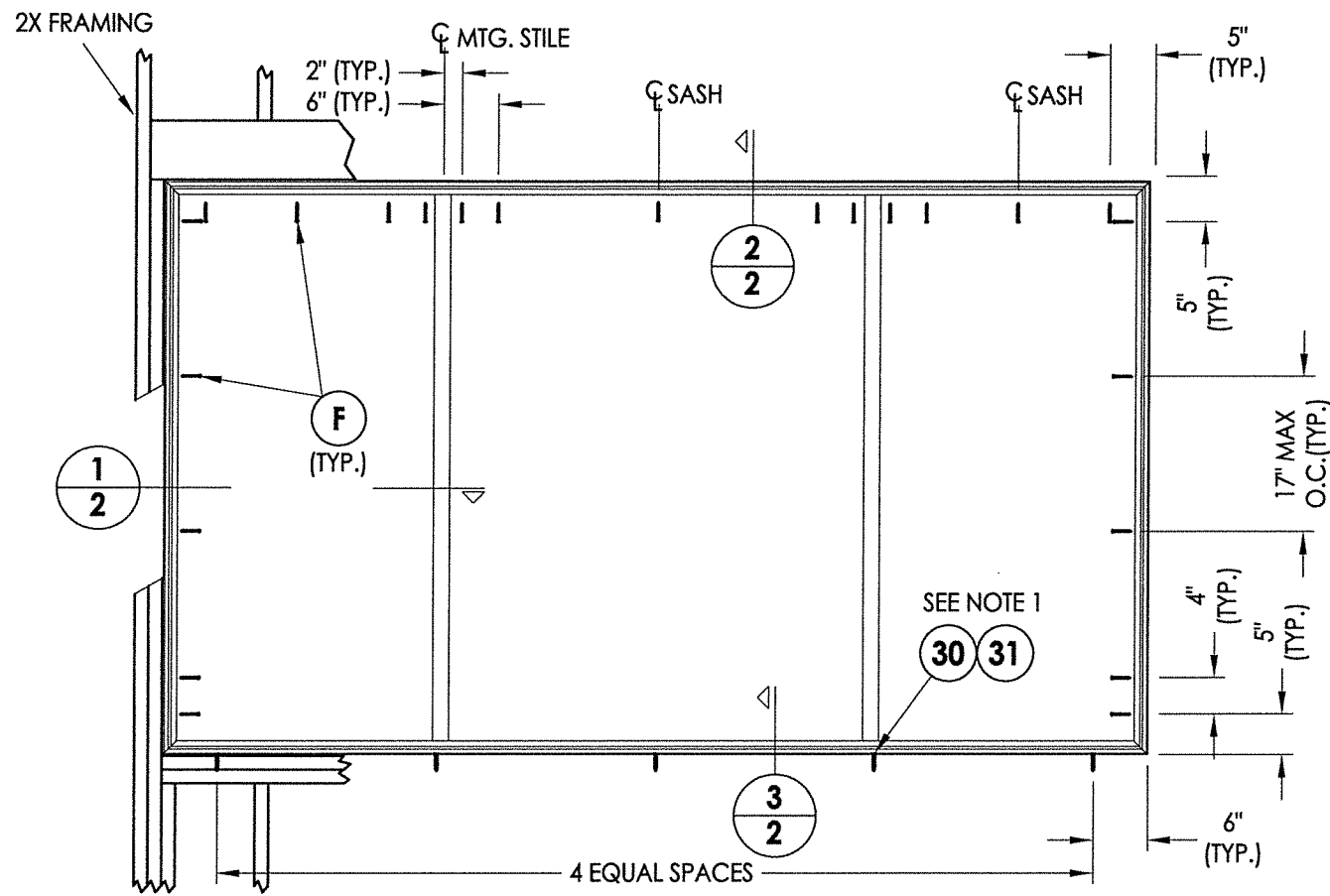
SHEET #	DESCRIPTION
1	Typical Elevations, Design Pressures & General Notes
2	Frame Anchoring & Cross Sections
3	Components
4	Bill of Materials & Glazing Details

MAX. OVERALL FRAME DIMENSION	MAX DAY LITE DIMENSION (OPERABLE)	MAX DAY LITE DIMENSION (FIXED)	GLASS TYPE	DESIGN PRESSURE (PSF)	
				POS.	NEG.
108.0" X 65.0"	24.38" X 58.5"	49.63" X 60.5"	G1	+50.0	-50.0

PRODUCT: HORIZONTAL SLIDING WINDOW  
PART OR ASSEMBLY: TYPICAL ELEVATION, DESIGN PRESSURES & GENERAL NOTES

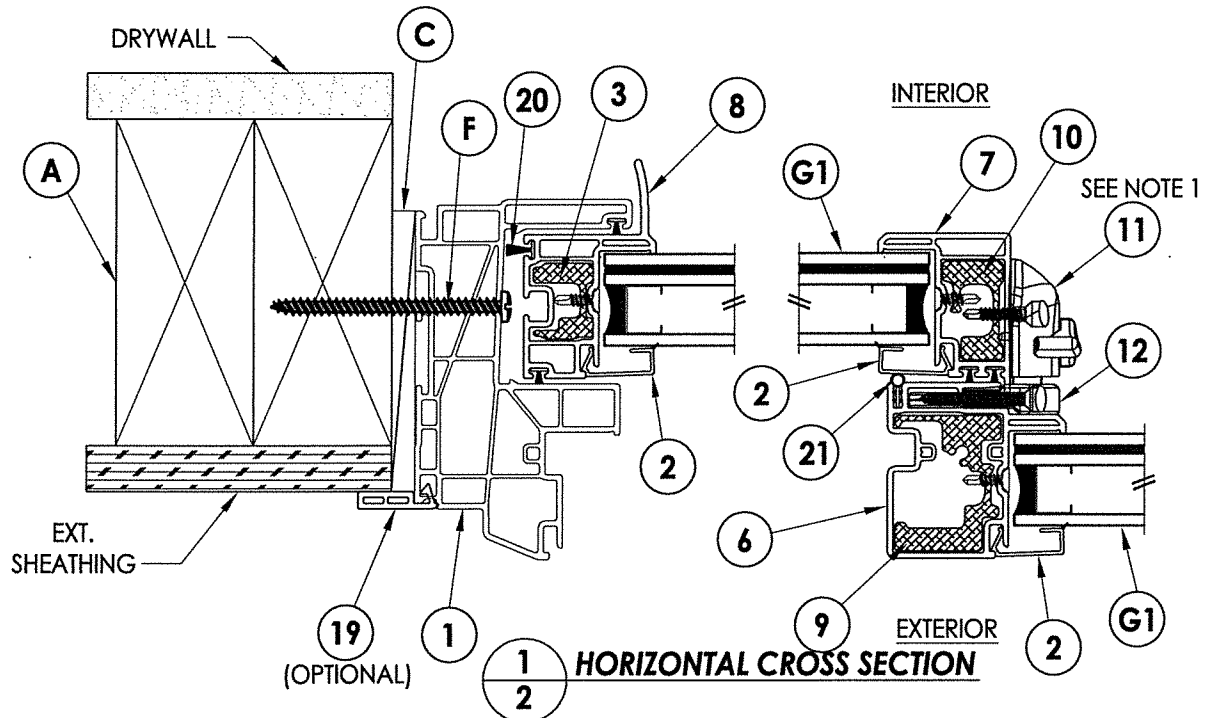
NO.	DATE	BY	REVISIONS

DATE: 11/05/19  
SCALE: N.T.S.  
DWG. BY: TRJ  
CHK. BY: LFS  
DRAWING NO.: TX-4851  
SHEET 1 OF 4

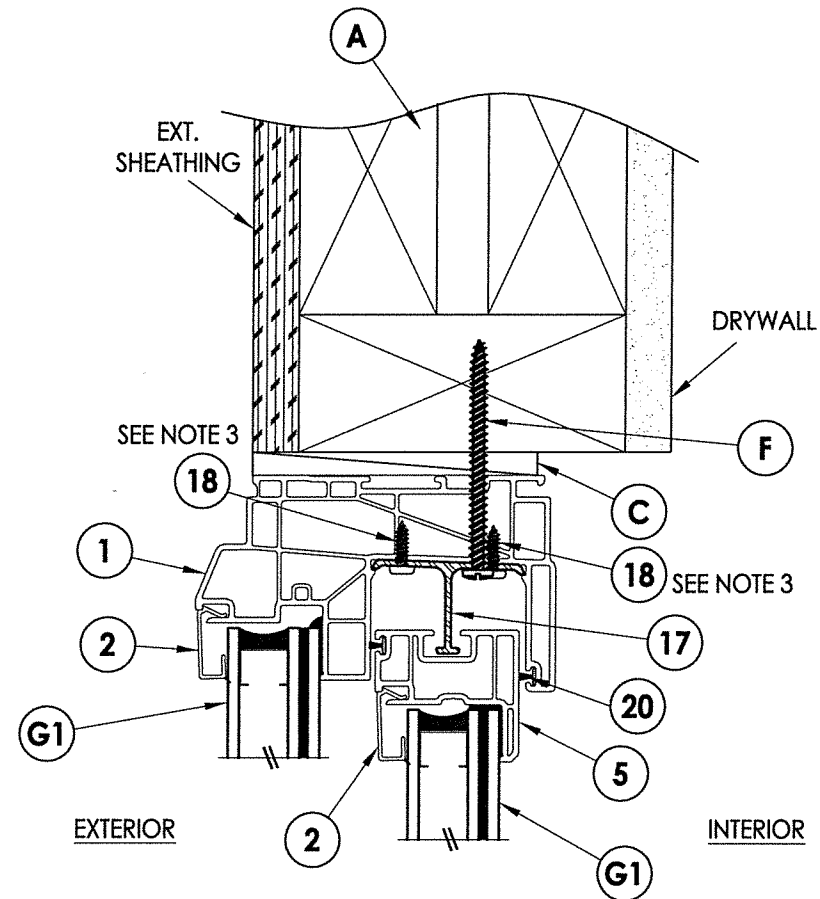


**FRAME ANCHORING**

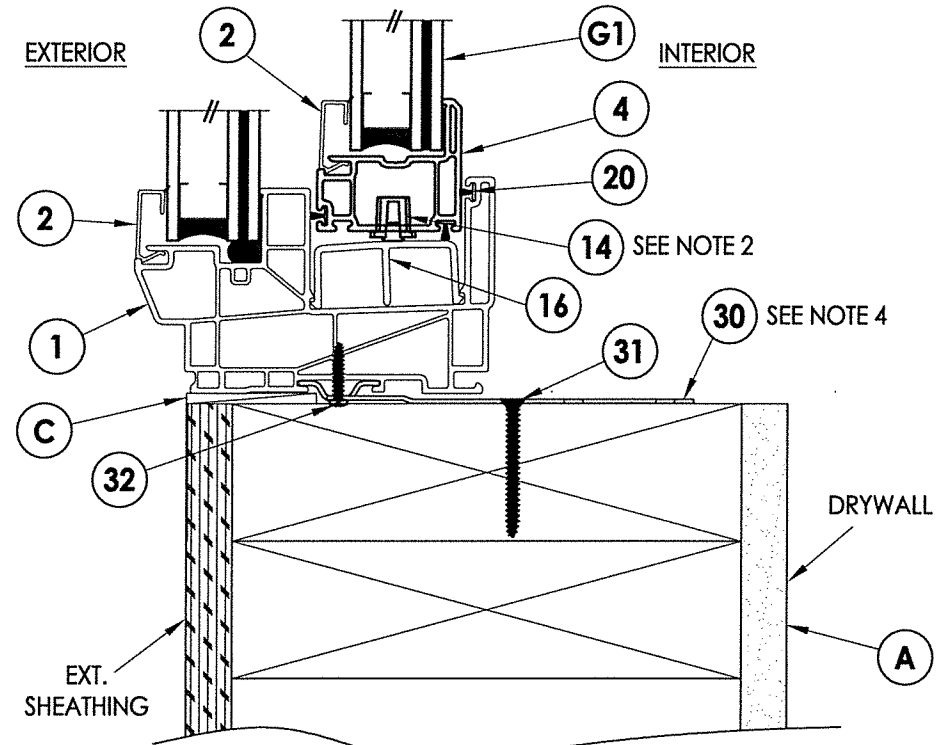
- NOTES:**
1. Lock and keeper located 7" from each end of lock/meeting stile.
  2. Metal roller assembly located 2" from each end of the bottom rail.
  3. Anti-lift (26" long) secured to head with (2) #10 X 2-1/2" PH SMS & (4) #8 X 1" PPH SMS.
  4. Installation tie straps required as follows (in addition to nail fin anchors):  
 Jamb: 6" from each corner & at centerline (3 total).  
 Head & Sill: 6" from each corner & 3 more equally spaced (5 total).



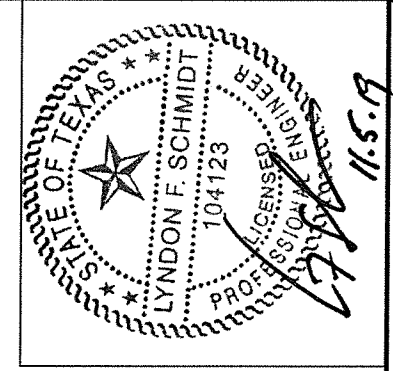
**1**  
**2** HORIZONTAL CROSS SECTION



**2**  
**2** VERTICAL CROSS SECTION



**3**  
**2** VERTICAL CROSS SECTION



Documents Prepared By: Lyndon F. Schmidt, P.E.  
 TEXAS P.E. #104123

**RW** BUILDING CONSULTANTS, INC.  
 P.O. Box 230 Valrico FL 33595  
 Phone No.: 813.659.9197

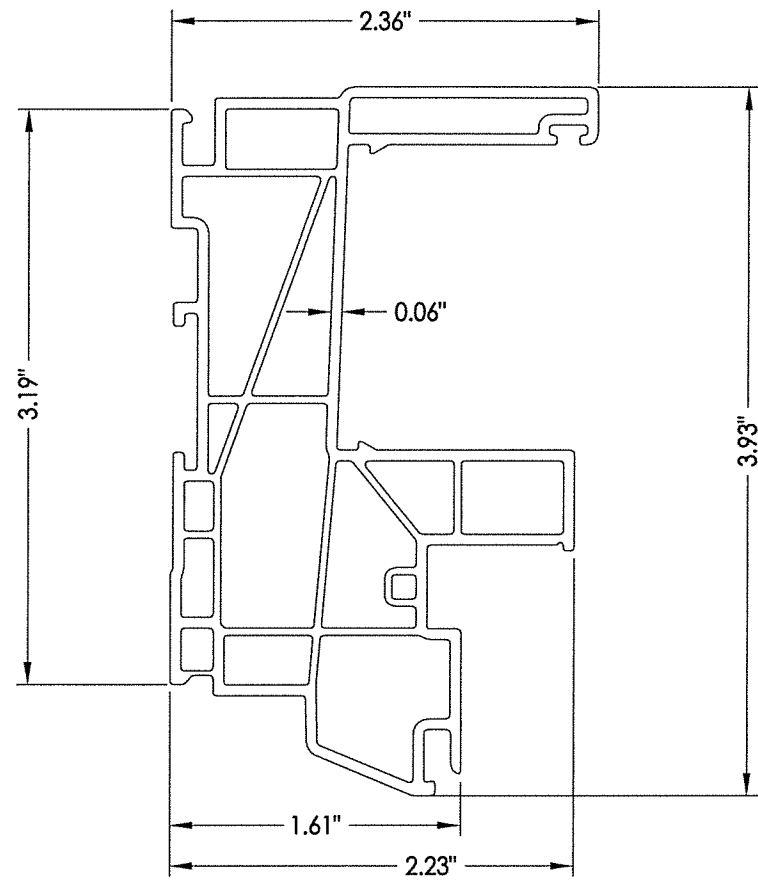
TEXAS BOARD OF PROFESSIONAL ENGINEERS  
 CERTIFICATE OF REGISTRATION # F-11852

PRODUCT: HORIZONTAL SLIDING WINDOW

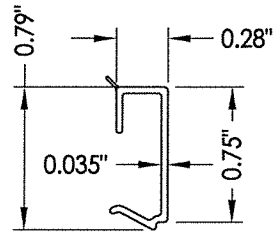
PART OR ASSEMBLY: FRAME ANCHORING & CROSS SECTIONS

NO.	DATE	BY	REVISIONS

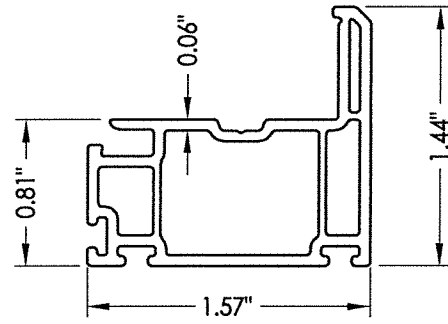
DATE: 11/05/19  
 SCALE: N.T.S.  
 DWG. BY: TRJ  
 CHK. BY: LFS  
 DRAWING NO.: TX-4851  
 SHEET 2 OF 4



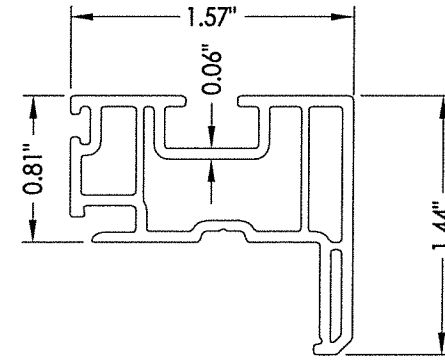
1 FRAME



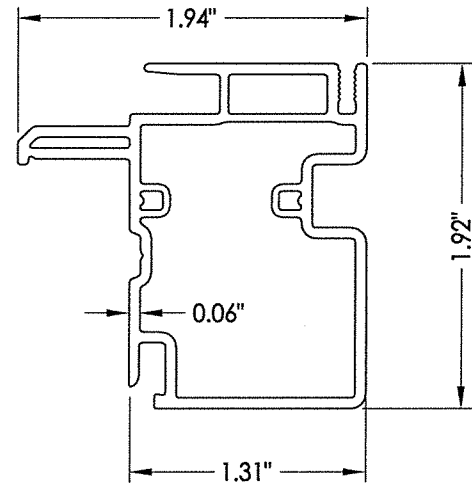
2 GLAZING BEAD



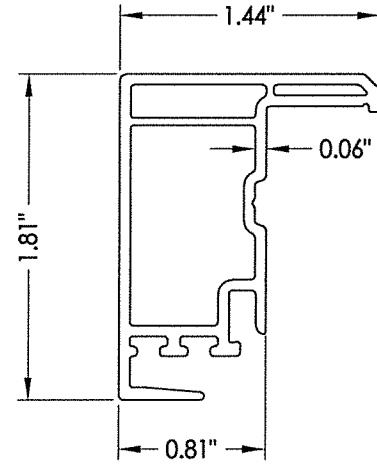
4 BOTTOM RAIL



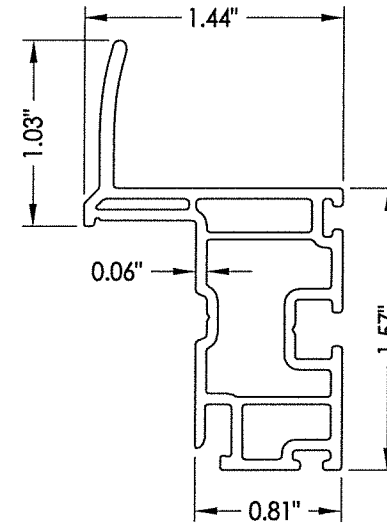
5 TOP RAIL



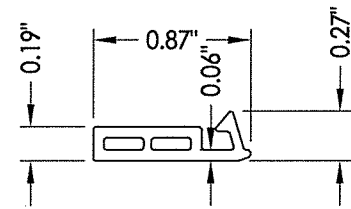
6 MEETING STILE



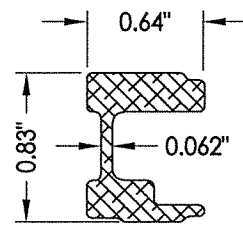
7 LOCK STILE



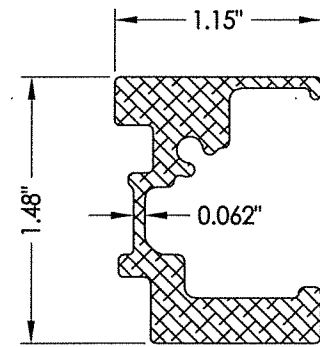
8 HANDLE STILE



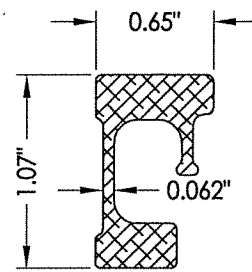
19 FLORIDA FLANGE (Optional)



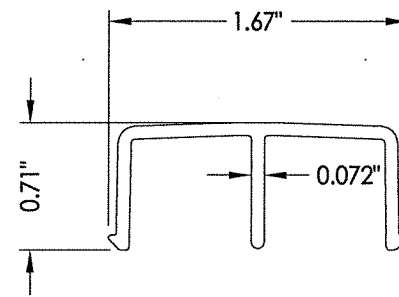
3 HANDLE STILE REINFORCEMENT



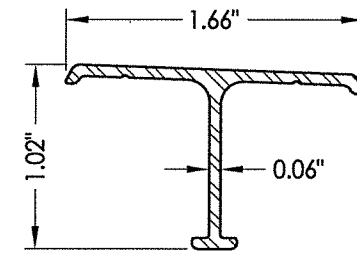
9 MEETING STILE REINFORCEMENT



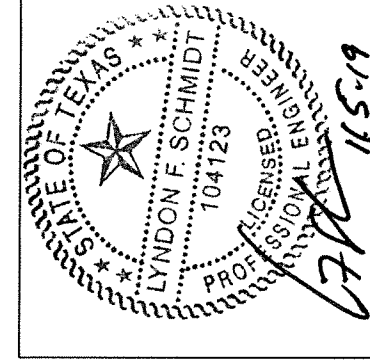
10 LOCK STILE REINFORCEMENT



16 ROLLER TRACK



17 ANTI-LIFT



Documents Prepared By: Lyndon F. Schmidt, P.E.  
TEXAS P.E. #104123

RW BUILDING CONSULTANTS, INC.  
P.O. Box 230 Valrico FL 33595  
Phone No.: 813.659.9197

TEXAS BOARD OF PROFESSIONAL ENGINEERS  
CERTIFICATE OF REGISTRATION # F-11852

PRODUCT: HORIZONTAL SLIDING WINDOW

PART OR ASSEMBLY: COMPONENTS

NO.	DATE	BY

DATE: 11/05/19

SCALE: N.T.S.

DWG. BY: TRJ

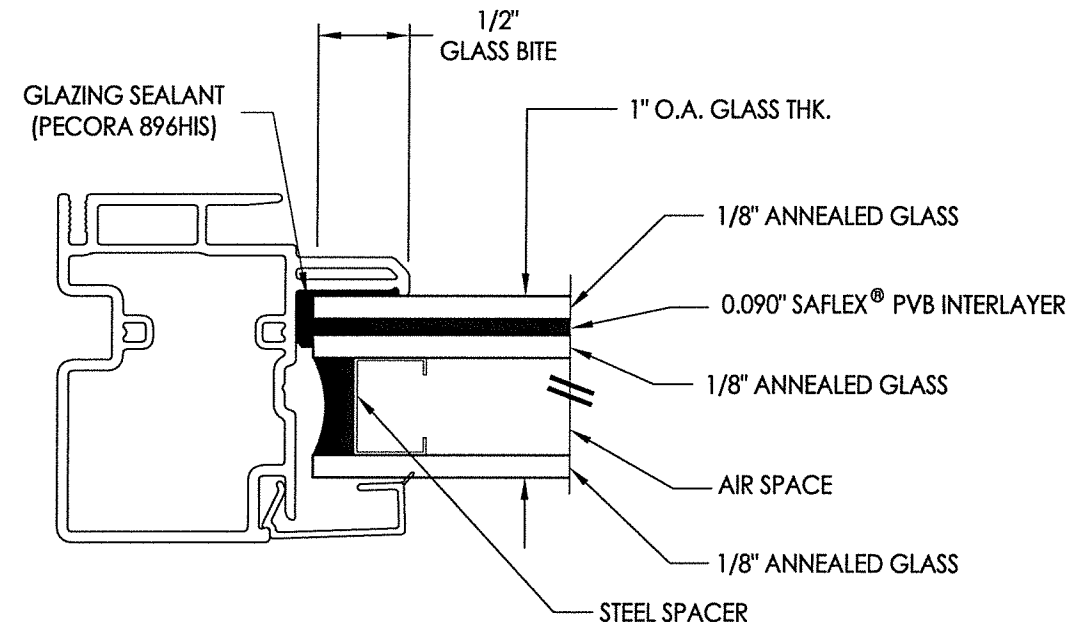
CHK. BY: LFS

DRAWING NO.: TX-4851

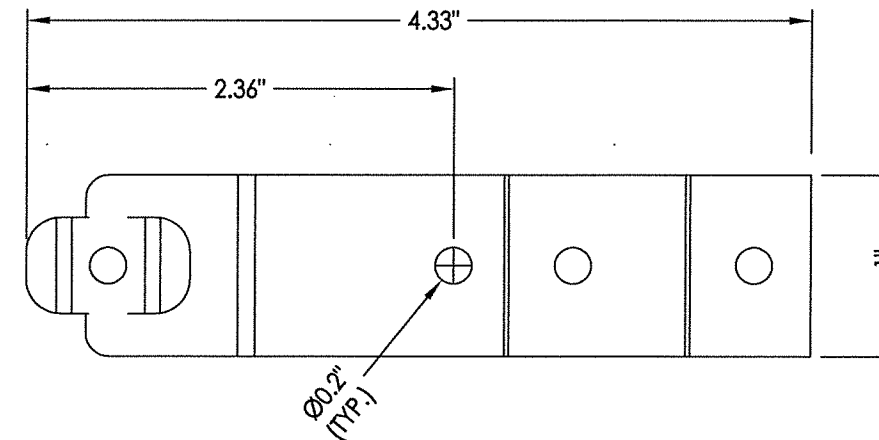
SHEET 3 OF 4

BILL OF MATERIALS		
ITEM #	DESCRIPTION	MATERIAL
A	2X FRAMING (SG >= 0.42)	WOOD
C	1/4" MAX. SHIM SPACE	-
F	#10 X 2-1/2" PPH SMS (1-1/4" MIN. EMBEDMENT)	STEEL
1	EXTRUDED VINYL FRAME (1834)*	RIGID PVC
2	EXTRUDED VINYL GLAZING BEAD (836B)*	RIGID PVC
3	HANDLE STILE REINFORCEMENT (16579)	6063 - T5 ALUM
4	BOTTOM RAIL (1808)*	RIGID PVC
5	TOP RAIL (1879)*	RIGID PVC
6	MEETING STILE (1837)*	RIGID PVC
7	LOCK STILE (1806)*	RIGID PVC
8	HANDLE STILE (1805)*	RIGID PVC
9	MEETING STILE REINFORCEMENT (16943)	6063 - T5 ALUM
10	LOCK STILE REINFORCEMENT (16582)	6063 - T5 ALUM
11	SASH LOCK	-
12	KEEPER	-
14	ROLLER (VISION #1147)	-
16	ROLLER TRACK	6063 - T5 ALUM
17	ANTI-LIFT ALUMINUM	6063 - T5 ALUM
19	FLORIDA FLANGE (1859)*	RIGID PVC
20	WEATHERSTRIP	-
21	INTERLOCK SEAL	-
30	INSTALLATION TIE STRAP	STEEL
31	#6 X 1-1/4" PFH WOOD SCREW (1-3/16" MIN. EMBEDMENT)	STEEL
32	#8 X 1" PPH SMS	STEEL

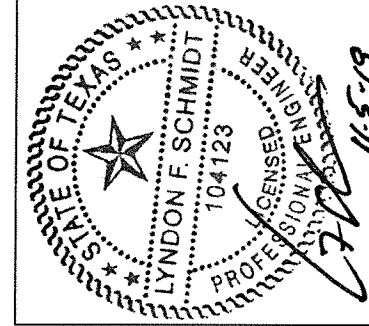
\* THE APPROVED WHITE RIGID PVC EXTERIOR EXTRUSIONS FOR WINDOWS ARE TO BE PRODUCED BY EXTRUDERS LICENSEES IN "AAMA CERTIFICATION PROGRAMS FOR RIGID PVC EXTRUSIONS".



**G1** GLAZING DETAIL



**30** INSTALLATION TIE STRAP  
18 GA. STEEL (0.048")



Documents Prepared By: Lyndon F. Schmidt, P.E.  
TEXAS P.E. #104123

**RW** BUILDING CONSULTANTS, INC.  
P.O. Box 230 Valrico FL 33595  
Phone No.: 813.659.9197  
TEXAS BOARD OF PROFESSIONAL ENGINEERS  
CERTIFICATE OF REGISTRATION # F-11852

PRODUCT: HORIZONTAL SLIDING WINDOW

PART OR ASSEMBLY: BILL OF MATERIALS, & GLAZING DETAILS

NO.	DATE	BY	REVISIONS

DATE: 11/05/19  
SCALE: N.T.S.  
DWG. BY: TRJ  
CHK. BY: LFS  
DRAWING NO.: TX-4851  
SHEET 4 OF 4