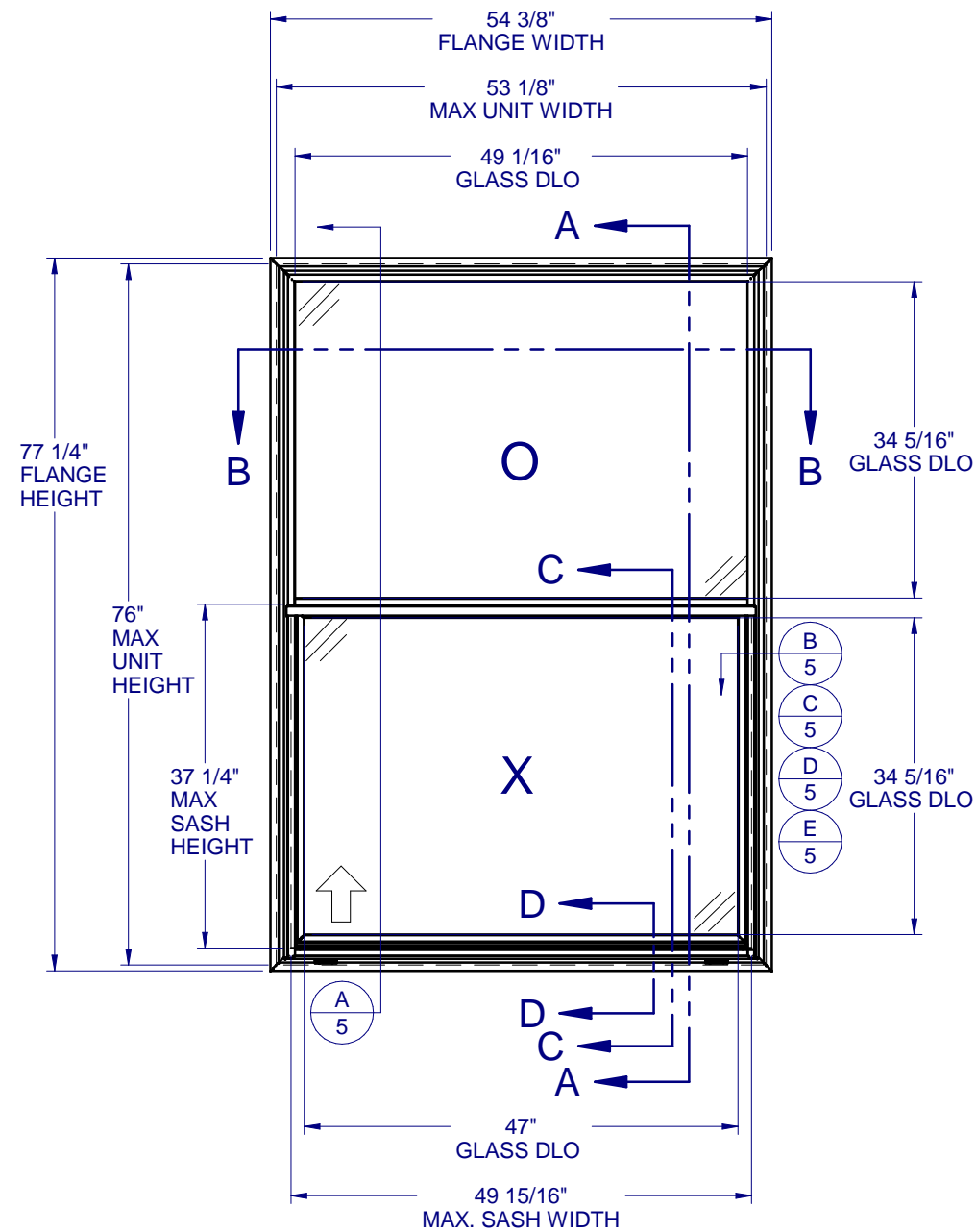


MODEL 6100 SYSTEM 2 SINGLE HUNG - LARGE MISSILE IMPACT

(SHOWN w/DIFFERENT OPTIONS)



SYSTEM 2
(CAR 138-561/138-1356)
MAXIMUM ALLOWABLE DESIGN PRESSURE: +50/-50 PSF

TABLE OF CONTENTS

GENERAL NOTES & ELEVATIONS.....1
SECTION VIEWS & GLAZING.....2
EXTRUSIONS & B.O.M.....3
ANCHOR SCHEDULE & NOTES.....4
INSTALLATION DETAIL.....5

GENERAL NOTES:

1. THE PRODUCT SHOWN HEREIN IS DESIGNED AND MANUFACTURED TO COMPLY WITH THE REQUIREMENTS OF THE 2018 INTERNATIONAL BUILDING CODE (IBC) AND 2018 INTERNATIONAL RESIDENTIAL CODE (IRC).
2. GLAZING OPTIONS: (SEE SHEET 2)
3. CONFIGURATIONS: "O/X".
4. ANCHORAGE: THE 33 1/3% STRESS INCREASE HAS NOT BEEN USED IN THE DESIGN OF THIS PRODUCT. SEE SHEET 6 FOR ANCHOR DETAILS. WINDLOAD DURATION FACTOR Cd=1.6 WAS USED FOR WOOD ANCHOR CALCULATIONS.
5. PRODUCT APPROVED FOR IMPACT RESISTANCE. SHUTTERS ARE NOT REQUIRED.
6. ALL FRAMES AND VENTS FULLY WELDED. SMALL JOINT SEAM SEALANT USED AT FIXED MEETING RAIL AND JAMB.
7. SERIES / MODEL DESIGNATION SH-6100.
8. THE DESIGNATION X AND O STAND FOR THE FOLLOWING: X = OPERABLE SASH, O = FIXED SASH
9. SECTION CALLOUTS APPLY TO ALL ELEVATIONS IN A SIMILAR LOCATION.
10. EXTERNAL WEEP SLOT = 1/4 x 1-1/2" LOCATED 5" FROM BOTH ENDS.

Custom
WINDOW SYSTEMS
1900 SW 44TH AVE.
OCALA, FLORIDA 34474
WWW.CWS.CC

6100 PVC SINGLE HUNG IMPACT

NO.:	DESCRIPTION:	BY:	DATE:
C	GENERAL NOTE 1	MS	06/13/22
B	REVISED TO TDI REQUEST	MS	03/24/22
A	REVISED TO TDI REQUEST	JML	3/21/17



6/30/2022

LUCAS A. TURNER, P.E.
TX PE # 115094
2428 OLD NATCHEZ TRC TRL
CAMDEN, TN 38320
PH. 941-380-1574

SHEET DESCRIPTION:
GENERAL NOTES AND ELEVATIONS

DRAWN BY: EMK	DATE: 12/17/15
DWG #: TDI-1068	REV.: C
SCALE: 1:20	SHEET 1 OF 5

**6100 PVC
SINGLE HUNG
IMPACT**

NO.:	DESCRIPTION:	BY:	DATE:
C	GENERAL NOTE 1	MS	06/13/22
B	REVISED TO TDI REQUEST	MS	03/24/22
A	REVISED TO TDI REQUEST	JML	3/21/17

REVISIONS



6/30/2022

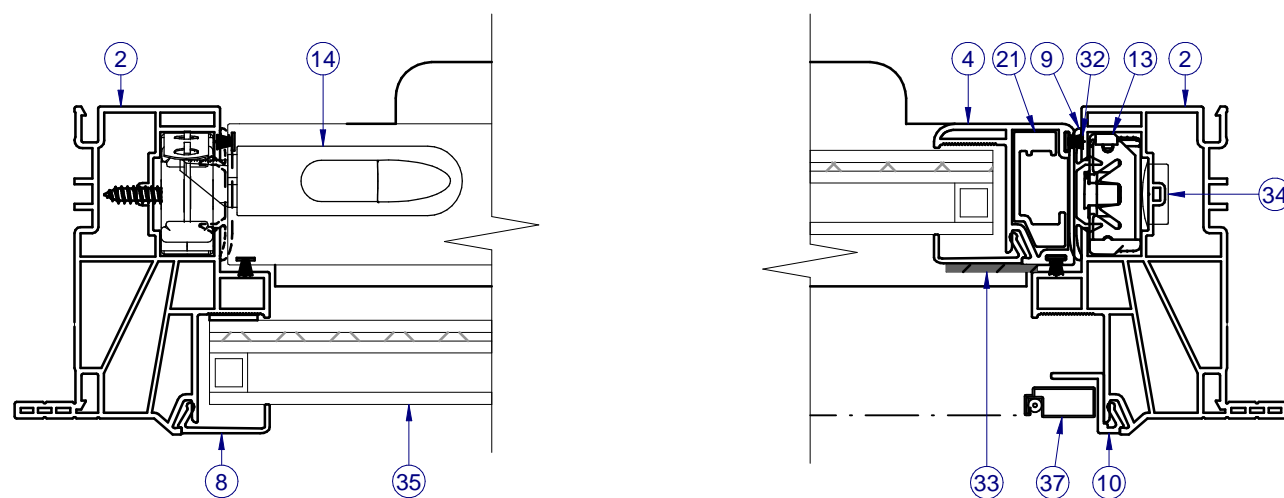
LUCAS A. TURNER, P.E.
TX PE # 115094
2428 OLD NATCHEZ TRC TRL
CAMDEN, TN 38320
PH. 941-380-1574

SHEET DESCRIPTION:

**SECTION VIEWS AND
GLAZING DETAIL**

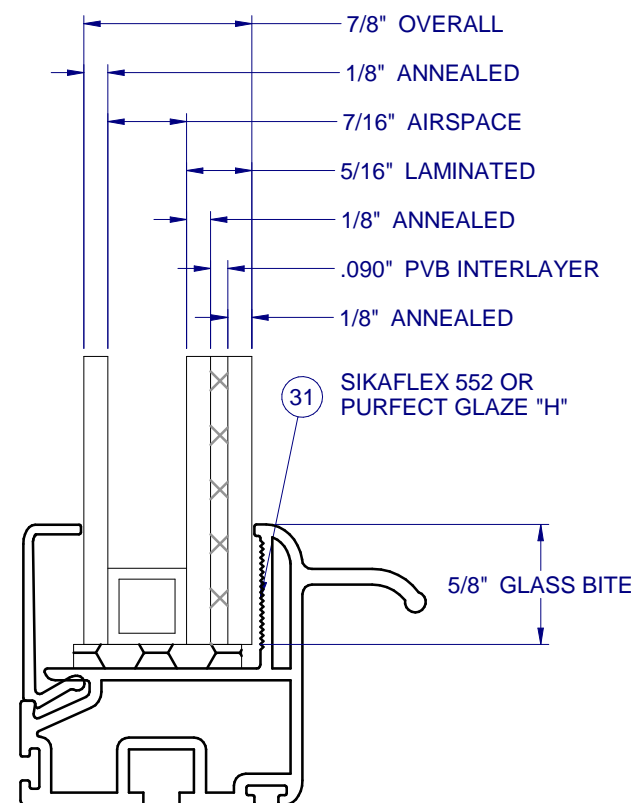
DRAWN BY:	DATE:
EMK	12/17/15
DWG #:	REV.:
TDI-1068	C
SCALE:	SHEET
1:2	2 OF 5

INTERIOR

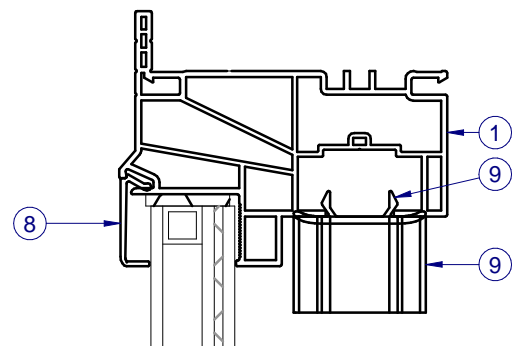


SECTION B-B

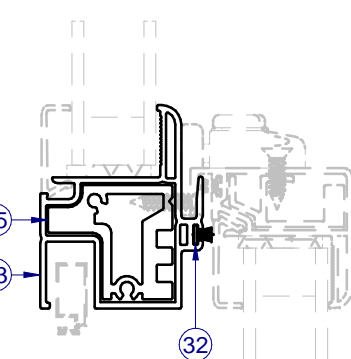
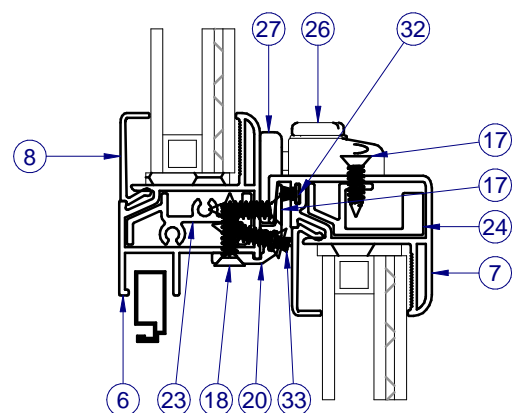
NOTE: LEFT SIDE SHOWS FIXED SECTION VIEW,
RIGHT SIDE SHOWS SASH SECTION VIEW.



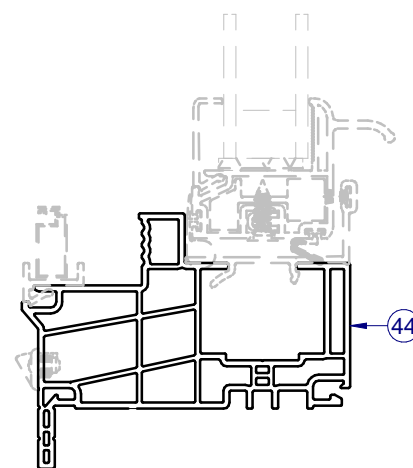
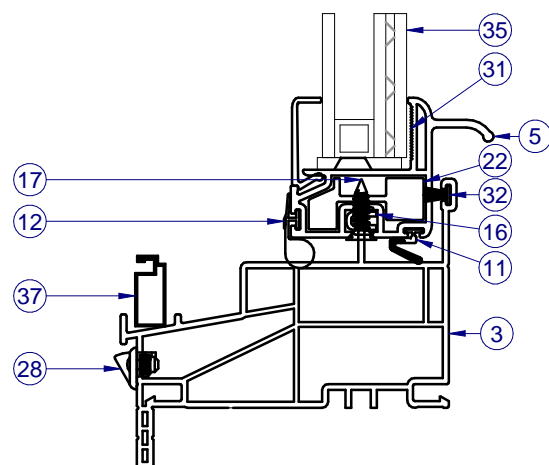
SYSTEM 2
SASH & FIXED



SECTION A-A



SECTION C-C
ALTERNATE HD MEETING RAIL
AND UNI-FRAME

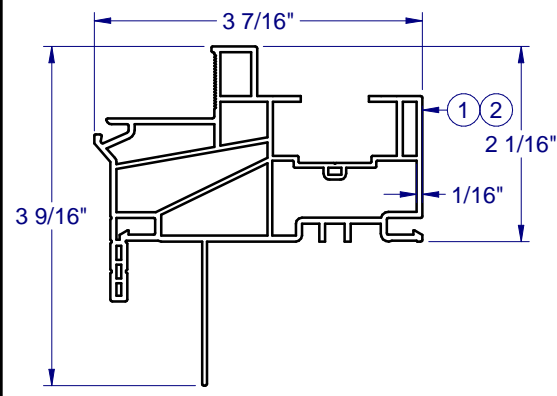


SECTION D-D
DEEP POCKET UNI-FRAME

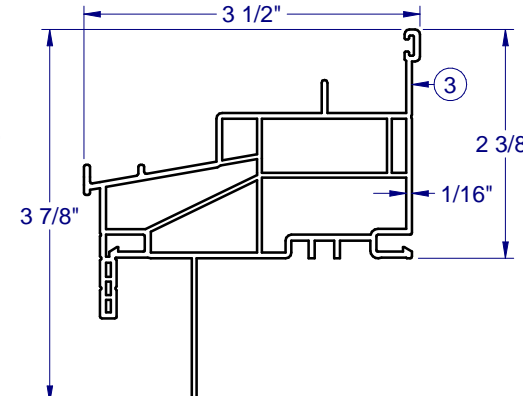
NOTES:
- FIN FRAME AVAILABLE FOR BOTH UNI-FRAME
AND STANDARD FRAME TYPES.
- 880 BALANCERS AND DEEP POCKET UNI-FRAME
(H-6193) REQUIRED FOR LARGER SASHES. (NOT
SHOWN IN SECTION B-B)

NOTE: ITEMS NOT SHOWN FOR CLARITY: 38-41

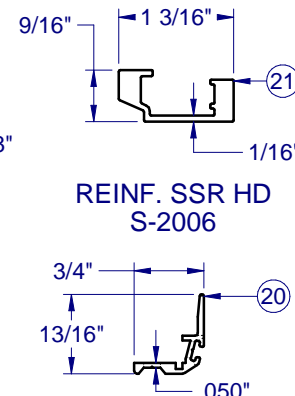
ITEM	PART	DESCRIPTION	MATERIAL	VENDOR
1	H-6125	HEAD, OUTERFRAME	PVC	ATN
2	H-6125	JAMBS, OUTERFRAME	PVC	ATN
3	H-6126	SILL, OUTERFRAME	PVC	ATN
4	H-6132	SASH SIDE RAIL	PVC	ATN
5	H-6136	SASH BOTTOM RAIL	PVC	ATN
6	H-6137	FIXED MEETING RAIL.	PVC	ATN
7	H-6138	SASH TOP RAIL	PVC	ATN
8	S-6141	GLAZING BEAD	PVC	ATN
9	S-6142	SASH STOP	PVC	ATN
10	S-6143	SCREEN ADAPTOR	PVC	ATN
11	P-5085	WSTP, QLON BULB VINYL		AMESBURY
12	P-5471	WSTP, QLON BULB VINYL		AMESBURY
13		BALANCERS - CONSTANT FORCE RT 562		CALDWELL
14	P-5392	SASH TILT LATCH	NYLON	CALDWELL
16	P-5396	PIVOT BAR	SS	CALDWELL
17	P-3515	#8 x 5/8 PHIL FLAT WHITE SMS	STEEL	FASTENAL
18	P-4146	#8 X 3/4 PHIL FLAT tek	STEEL	FASTENAL
19	P-3028	SETTING BLOCK	RUBBER	FRANK LOWE
20	S-2001	INTERLOCK RAIL	ALUM	ASCEND
21	S-2006	REINF, SASH SIDE RAIL, HD	ALUM	ASCEND
22	S-2007	REINF, BOTTOM RAIL	ALUM	ASCEND
23	S-2008	REINF, FMR	ALUM	ASCEND
24	S-2009	REINF, TOP RAIL	ALUM	ASCEND
26	P-3783	IMPACT LOCKS	NYLON	LAWRENCE
27	P-3784	IMPACT KEEPERS	NYLON	LAWRENCE
28	P-5420	WEEP COVER	NYLON	M&M
31		HOTMELT	SILICONE	TRUSEAL
32	P-3305	WSTP, .270 X 187, SOFT TOUCH FIN		ULTRAFAB
33	P-5425	WSTP, .200 X 5/8" X 5/8" DUST PLUG		ULTRAFAB
34	P-5421	HOLE PLUG	NYLON	
35	GLASS	SEE SHEET 2		
36	P-4638	#8 X 2-1/2 PHIL TRUSS tek	STEEL	FASTENAL
37	P-3218	SCREEN FRAME	ALUM	FLA SCREEN
38	P-4754	SCREEN CORNER KEY	NYLON	FLA SCREEN
39	P-3228	SCREEN SPLINE		DAPA
40	P-3029	SCREEN LIFTS		SUMMIT
41	P-3033	SCREEN SPRINGS		FLA SCREEN
42		BALANCERS - CONSTANT FORCE RT 880		
43	H-6157	HD FIXED MEETRING RAIL	PVC	VISION
44	H-6193	UNI-FRAME, 880 BALANCERS	PVC	VISION
45	H-2115	REINF, HD FMR	ALUM	KEYMARK
46	S-6216	UNI-FRAME SILL POCKET INSERT	PVC	VISION
47	S-6217	UNI-FRAME SCREEN RETAINER	PVC	VISION



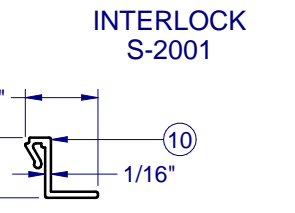
PVC FRAME HEAD & JAMB
H-6125



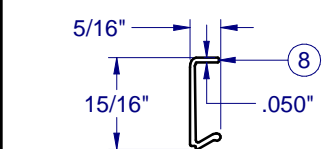
PVC FRAME SILL
H-6126



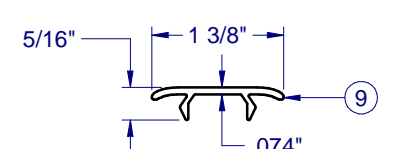
REINF. SSR HD
S-2006



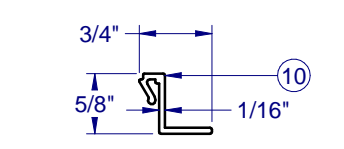
INTERLOCK
S-2001



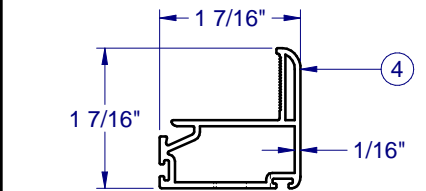
PVC GLAZING BEAD
S-6141



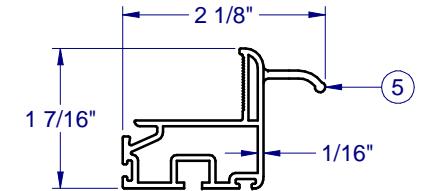
PVC SASH STOP
S-6138



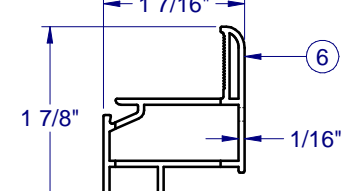
PVC SCREEN ADAPTOR
S-6143



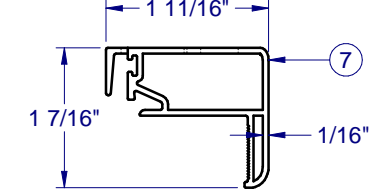
PVC SIDE RAIL
H-6132



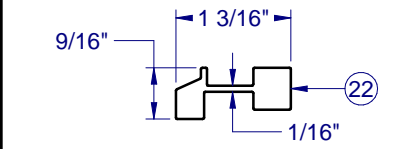
PVC SASH BTM RAIL
H-6136



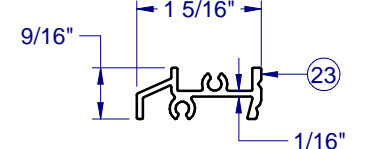
PVC SASH FMR
H-6137



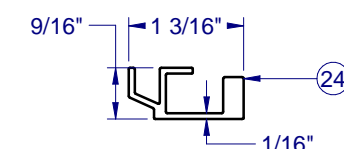
PVC SASH TOP RAIL
H-6138



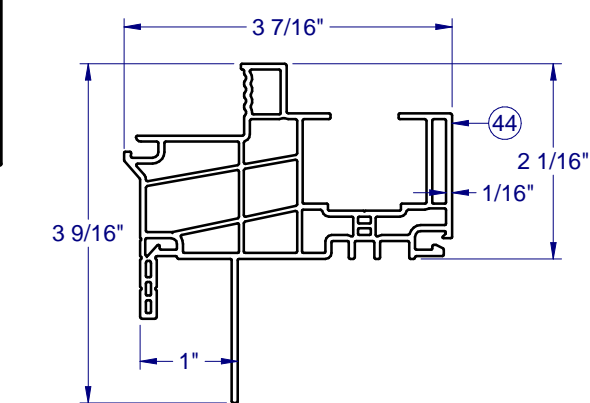
REINF. BTM RAIL
S-2007



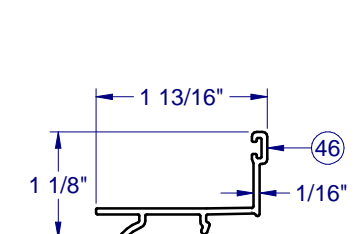
REINF. FMR
S-2008



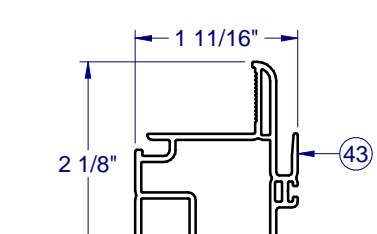
REINF. TOP RAIL
S-2009



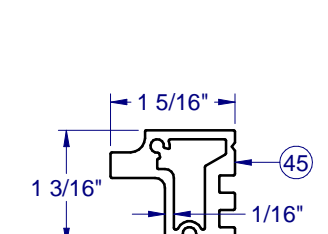
PVC FRAME
H-6193



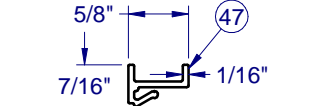
PVC SILL POCKET INSERT
S-6216



PVC HD FMR
H-6157



REINF. HD FMR
H-2115
6005A-T5



PVC SCREEN RETAINER
S-6217

FRAME CORNER CONSTRUCTION

CORNER WELD (ALL SIDES)
1:8

FIXED MEETING RAIL
SCREWED TOGETHER WITH
OUTERFRAME
1:8

Custom
WINDOW SYSTEMS

1900 SW 44TH AVE.
OCALA, FLORIDA 34474
WWW.CWS.CC

**6100 PVC
SINGLE HUNG
IMPACT**

NO.	DESCRIPTION:	BY:	DATE:
C	GENERAL NOTE 1	MS	06/13/22
B	REVISED TO TDI REQUEST	MS	03/24/22
A	REVISED TO TDI REQUEST	JML	3/21/17



6/30/2022

LUCAS A. TURNER, P.E.
TX PE # 115094
2428 OLD NATCHEZ TRC TRL
CAMDEN, TN 38320
PH. 941-380-1574

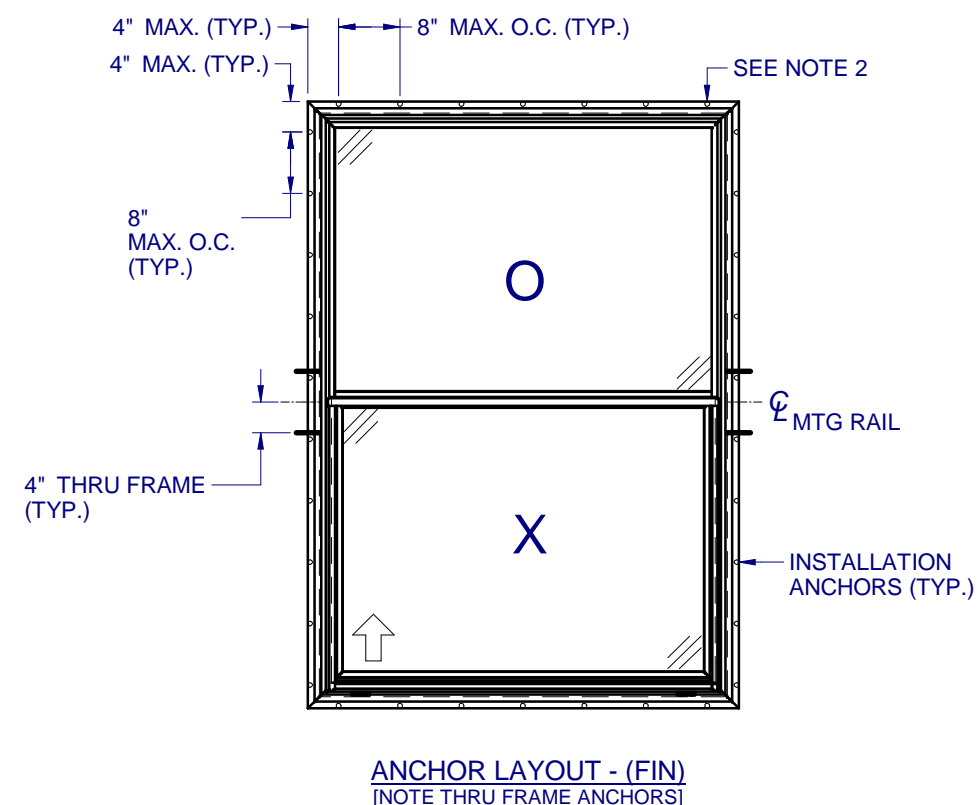
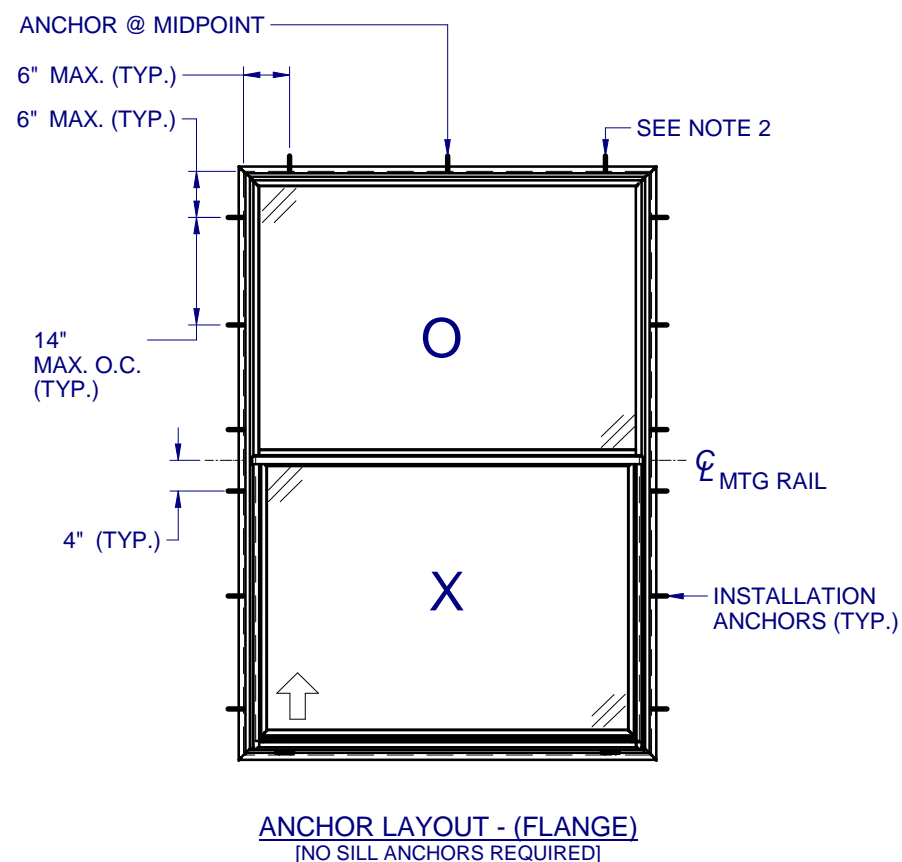
SHEET DESCRIPTION:
BOM AND EXTRUSIONS

DRAWN BY: EMK	DATE: 12/17/15
DWG #: TDI-1068	REV.: C
SCALE: 1:2	SHEET 3 OF 5

LINE ITEMS NOT USED:
15, 25, 29-30

NOTE: ALL EXTRUSIONS ARE ALUM. 6063-T6 UNLESS OTHERWISE NOTED.

**6100 PVC
SINGLE HUNG
IMPACT**



NOTES:

1. INSTALL ONE ANCHOR AT EACH INSTALLATION LOCATION.
2. SHIM AS REQ AT EACH INSTALLATION ANCHOR USING LOAD BEARING SHIMS. MAX. ALLOWABLE SHIM STACK TO BE 1/4". USE SHIMS WHERE SPACE GREATER THAN 1/16" IS PRESENT. LOAD BEARING SHIMS SHALL BE CONSTRUCTED OF HIGH DENSITY PLASTIC OR BETTER. WOOD SHIMS ARE NOT ALLOWED.
3. ANCHOR TYPE, SIZE, SPACING AND EMBEDMENT SHALL BE AS SPECIFIED IN THESE DRAWINGS, SEE TABLE 1, SHEET 5.
4. ALL INSTALLATION ANCHORS MUST BE MADE OF OR PROTECTED WITH A CORROSION RESISTANT MATERIAL OR COATING. DISSIMILAR METALS OR MATERIALS IN CONTACT WITH PRESSURE TREATED WOOD MUST BE PROTECTED TO PREVENT REACTION.
5. INSTALLATION ANCHORS SHALL BE IN ACCORDANCE WITH ANCHOR MANUFACTURER'S INSTALLATION INSTRUCTIONS, AND ANCHORS SHALL NOT BE USED IN SUBSTRATES WITH STRENGTHS LESS THAN THE MINIMUM SPECIFIED IN TABLE 1, SHEET 5.
6. ANCHOR EMBEDMENT TO SUBSTRATE SHALL BE BEYOND WALL DRESSING OR STUCCO. FOR CONCRETE/CMU OPENINGS, EMBEDMENT SHALL BE BEYOND WOOD BUCKS, IF USED, INTO SUBSTRATE. INSTALLATIONS INTO SOLID CONCRETE OR GROUT-FILLED CMU MAY INCLUDE BUT DO NOT REQUIRE 1X WOOD BUCKS BETWEEN THE PRODUCT AND SUBSTRATE. INSTALLATIONS INTO HOLLOW CMU REQUIRE THE USE OF 1X WOOD BUCKS BETWEEN THE PRODUCT AND SUBSTRATE.
7. A MINIMUM CENTER-TO-CENTER SPACING SHALL BE MAINTAINED BETWEEN ALL FASTENERS: 3-9/16" FOR MASONRY, 1" FOR WOOD AND METAL.
8. WOOD OR MASONRY OPENINGS, BUCKS AND BUCK FASTENERS SHALL BE PROPERLY DESIGNED BY THE ARCHITECT OR ENGINEER OF RECORD AND INSTALLED TO TRANSFER WIND LOADS TO THE STRUCTURE. SUBSTRATES SHALL MEET THE MINIMUM STRENGTH REQUIREMENTS AS SHOWN IN TABLE 1, SHEET 5. CONCRETE AND MASONRY SUBSTRATES MAY NOT BE CRACKED.
9. SEALING AND FLASHING STRATEGIES FOR OVERALL WATER RESISTANCE OF INSTALLATION SHALL BE DONE BY OTHERS FOLLOWING THE CURRENT VERSION OF THE REFERENCE DOCUMENTS: FMA/AAMA 100(FIN WINDOWS), FMA/AAMA 200(FLANGE WINDOWS), FMA/WDMA 250(BOX WINDOWS), FMA/AAMA/WDMA 300(EXTERIOR DOORS)

REVISIONS		NO.:	DESCRIPTION:	BY:	DATE:
C	GENERAL NOTE 1	MS	06/13/22		
B	REVISED TO TDI REQUEST	MS	03/24/22		
A	REVISED TO TDI REQUEST	JML	3/21/17		



6/30/2022

LUCAS A. TURNER, P.E.
TX PE # 115094
2428 OLD NATCHEZ TRC TRL
CAMDEN, TN 38320
PH. 941-380-1574

SHEET DESCRIPTION:
ANCHOR SCHEDULE AND NOTES

DRAWN BY: EMK	DATE: 12/17/15
DWG #: TDI-1068	REV.: C
SCALE: 1:25	SHEET 4 OF 5

