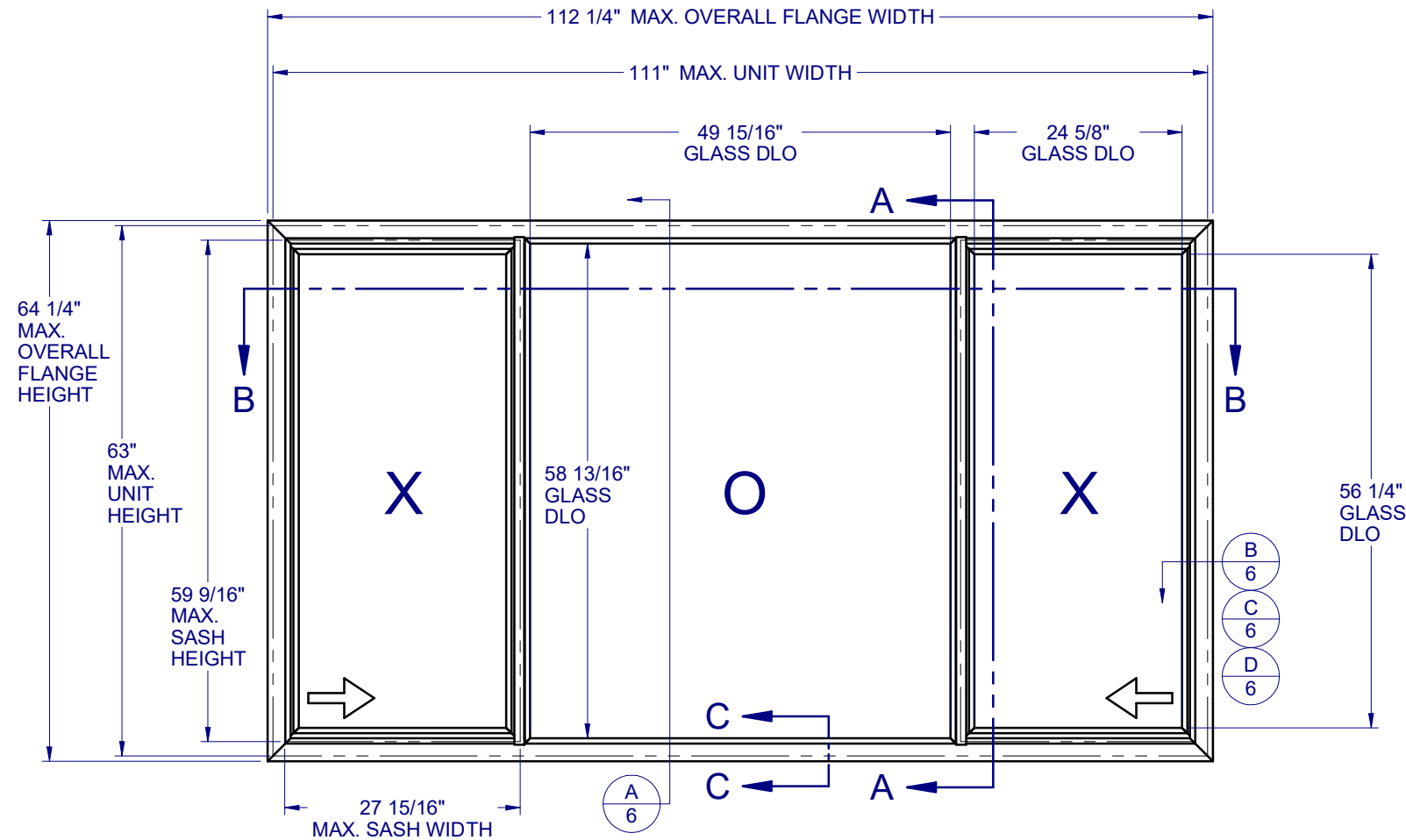


MODEL 8200 SYSTEM 3 HORIZONTAL SLIDER - LARGE MISSILE IMPACT



SYSTEM 3 (CAR 138-526/138-1087)
MAXIMUM ALLOWABLE DESIGN PRESSURE: +50/-50 PSF

GENERAL NOTES:

1. THE PRODUCT SHOWN HEREIN IS DESIGNED AND MANUFACTURED TO COMPLY WITH THE REQUIREMENTS OF THE 2018 INTERNATIONAL BUILDING CODE (IBC) AND 2018 INTERNATIONAL RESIDENTIAL CODE (IRC).
2. GLAZING OPTIONS: (SEE SHEET 2)
3. CONFIGURATIONS: "XOX".
4. ANCHORAGE: THE 33 1/3% STRESS INCREASE HAS NOT BEEN USED IN THE DESIGN OF THIS PRODUCT. SEE SHEET 6 FOR ANCHOR DETAILS. WINDLOAD DURATION FACTOR Cd=1.6 WAS USED FOR WOOD ANCHOR CALCULATIONS.
5. PRODUCT APPROVED FOR IMPACT RESISTANCE. SHUTTERS ARE NOT REQUIRED.
6. ALL FRAMES AND VENTS FULLY WELDED. SMALL JOINT SEAM SEALANT USED AT FIXED MEETING RAIL AND HEAD/SILL.
7. SERIES / MODEL DESIGNATION HS-8200.
8. THE DESIGNATION X AND O STAND FOR THE FOLLOWING:
X = OPERABLE SASH, O = FIXED SASH
9. SECTION CALLOUTS APPLY TO ALL ELEVATIONS IN A SIMILAR LOCATION.
10. EXTERNAL WEEP SLOT = 1/4" x 1" LOCATED 4" FROM BOTH ENDS.

Custom
WINDOW SYSTEMS
1900 SW 44TH AVE.
OCALA, FLORIDA 34474
WWW.CWS.CC

8200 PVC HORZ SLIDER IMPACT

NO.	DESCRIPTION:	BY:	DATE:
B	IBC/IRC REF. 2018 UPDATE	JLD	4/29/20
A	REVISED TO TDI REQUEST	JML	3/27/17



5/28/2020

LUCAS A. TURNER, P.E.
TX PE # 115094
TBPE REG. #F-18075
2428 OLD NATCHEZ TRC TRL
CAMDEN, TN 38320
PH. 941-380-1574

SHEET DESCRIPTION:

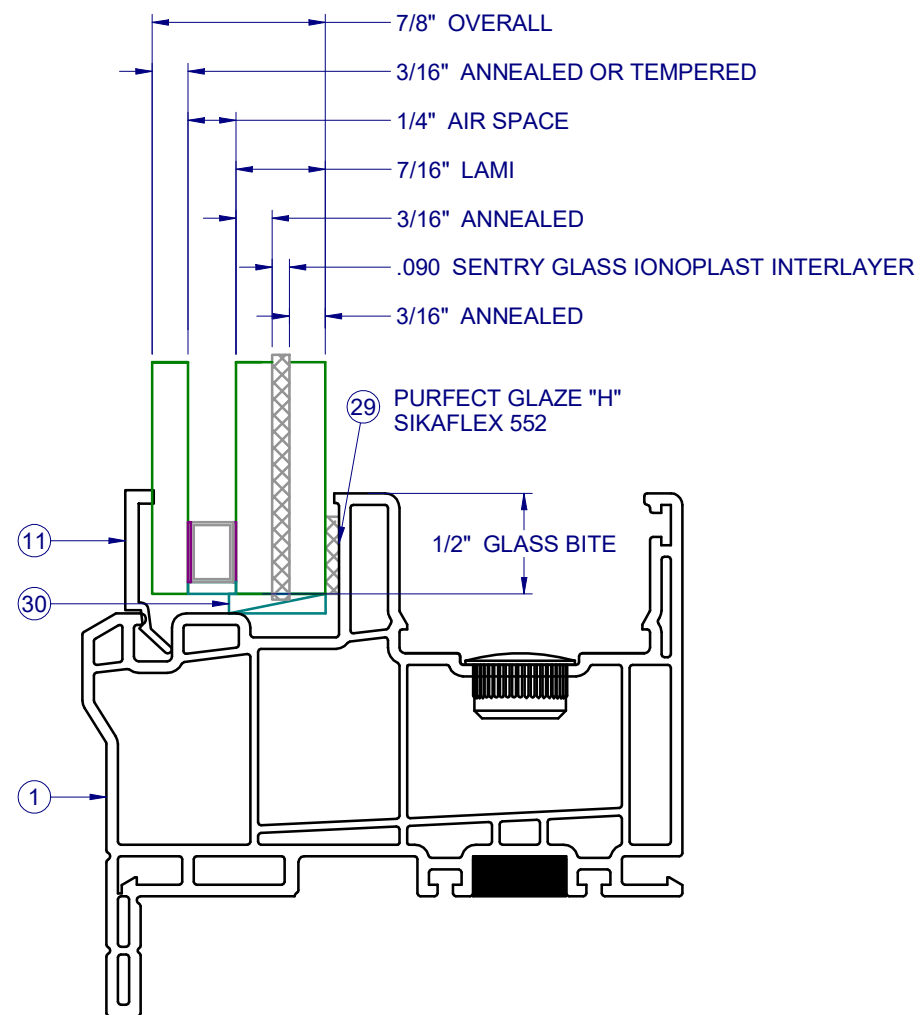
GENERAL NOTES AND ELEVATIONS

DRAWN BY:	DATE:
EMK	11/12/15
DWG #:	REV.:
TDI-868	B
SCALE:	SHEET
1:20	1 OF 6

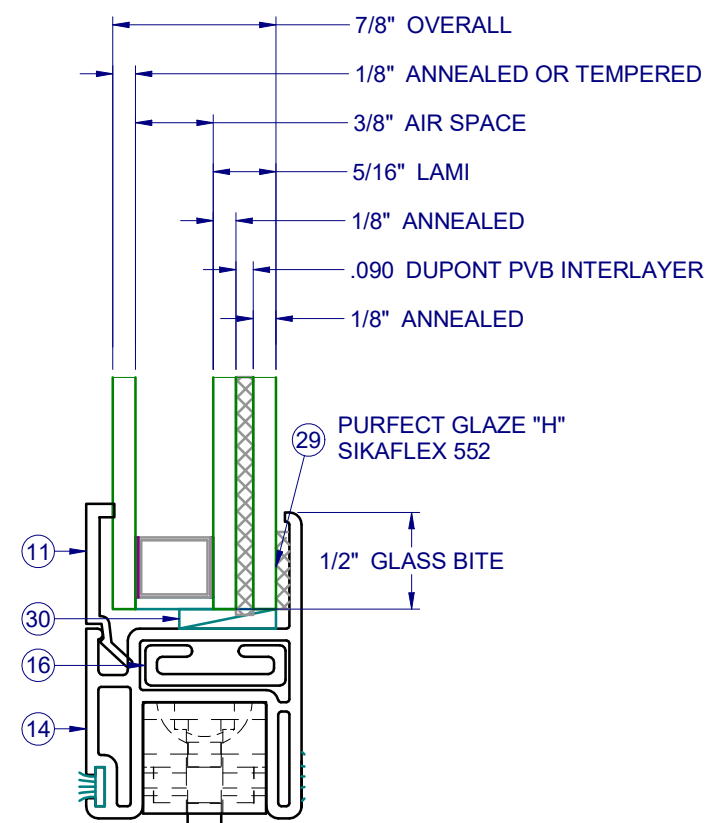
TABLE OF CONTENTS

GENERAL NOTES & ELEVATIONS.....	1
GLAZING DETAILS.....	2
SECTION VIEWS & GLAZING DETAILS....	3
EXTRUSIONS & B.O.M.....	4
ANCHOR SCHEDULE & NOTES.....	5
INSTALLATION DETAILS.....	6

**8200 PVC
HORZ SLIDER
IMPACT**



SYSTEM 3
FIXED GLASS



SYSTEM 3
SASH GLASS

NO.:	DESCRIPTION:	BY:	DATE:
B	IBC/IRC REF. 2018 UPDATE	JLD	4/29/20
A	REVISED TO TDI REQUEST	JML	3/27/17



5/28/2020

LUCAS A. TURNER, P.E.
TX PE # 115094
TBPE REG. #F-18075
2428 OLD NATCHEZ TRC TRL
CAMDEN, TN 38320
PH. 941-380-1574

SHEET DESCRIPTION:

GLAZING DETAILS

DRAWN BY: EMK	DATE: 11/12/15
DWG #: TDI-868	REV.: B
SCALE: 1:1	SHEET 2 OF 6

**8200 PVC
HORZ SLIDER
IMPACT**

NO.:	DESCRIPTION:	BY:	DATE:
B	IBC/IRC REF. 2018 UPDATE	JLD	4/29/20
A	REVISED TO TDI REQUEST	JML	3/27/17

REVISIONS



5/28/2020

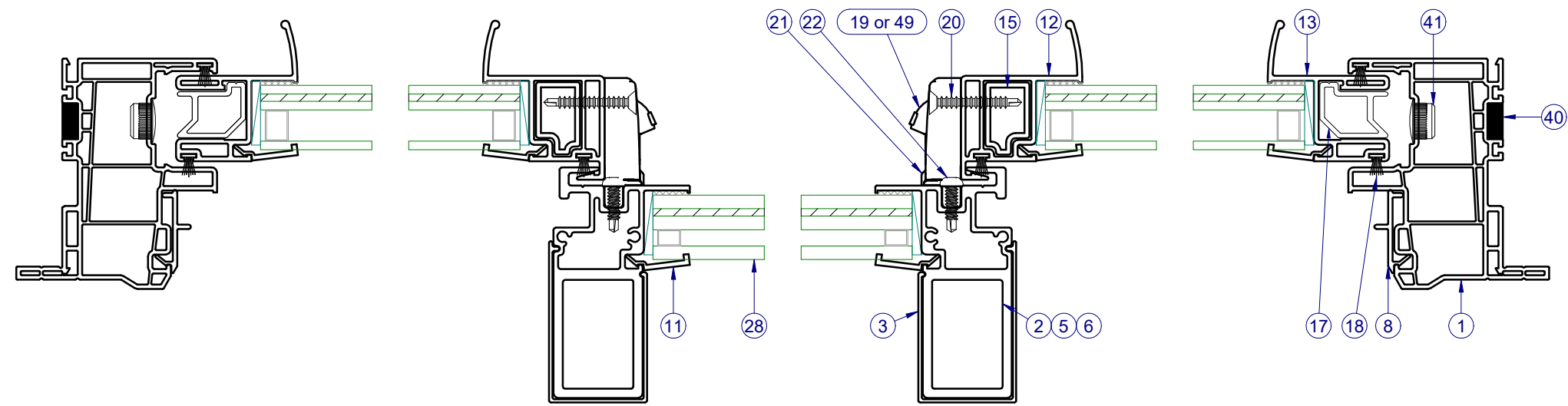
LUCAS A. TURNER, P.E.
TX PE # 115094
TBPE REG. #F-18075
2428 OLD NATCHEZ TRC TRL
CAMDEN, TN 38320
PH. 941-380-1574

SHEET DESCRIPTION:

SECTION VIEWS

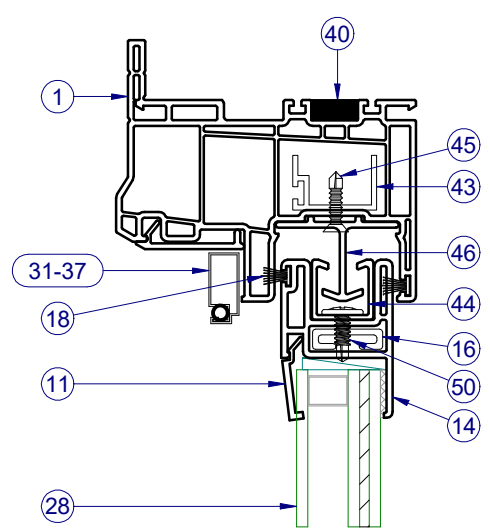
DRAWN BY:	DATE:
EMK	11/12/15
DWG #:	REV.:
TDI-868	B
SCALE:	SHEET
1:2	3 OF 6

INTERIOR

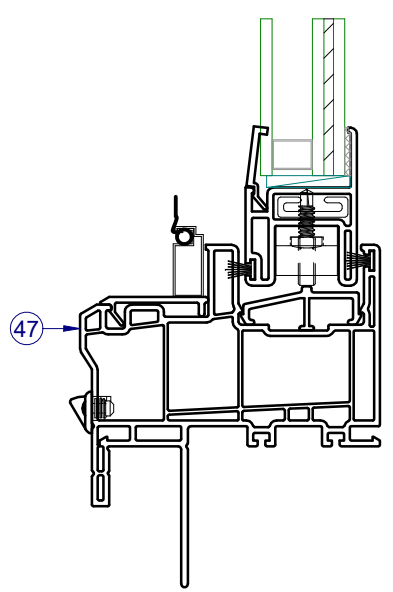


SECTION VIEW B-B

INTERIOR

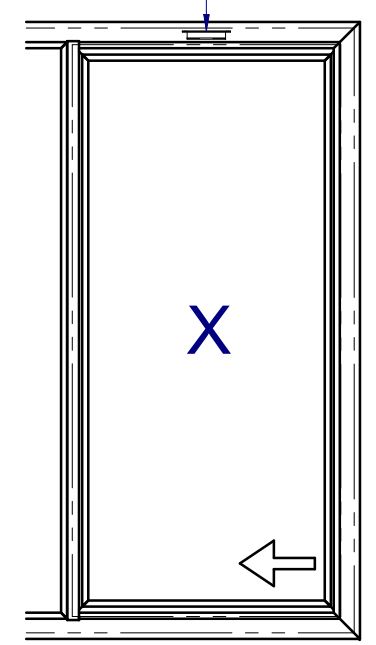


SECTION VIEW A-A



SECTION VIEW C-C
ALTERNATE FIN FRAME

HEAD IMPACT HOOK (TYP.)
MIDSPAN OF SASHES
(ITEMS 44 & 46)

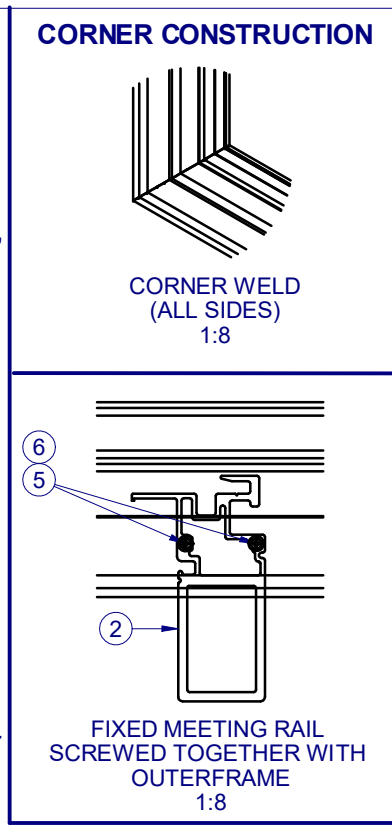
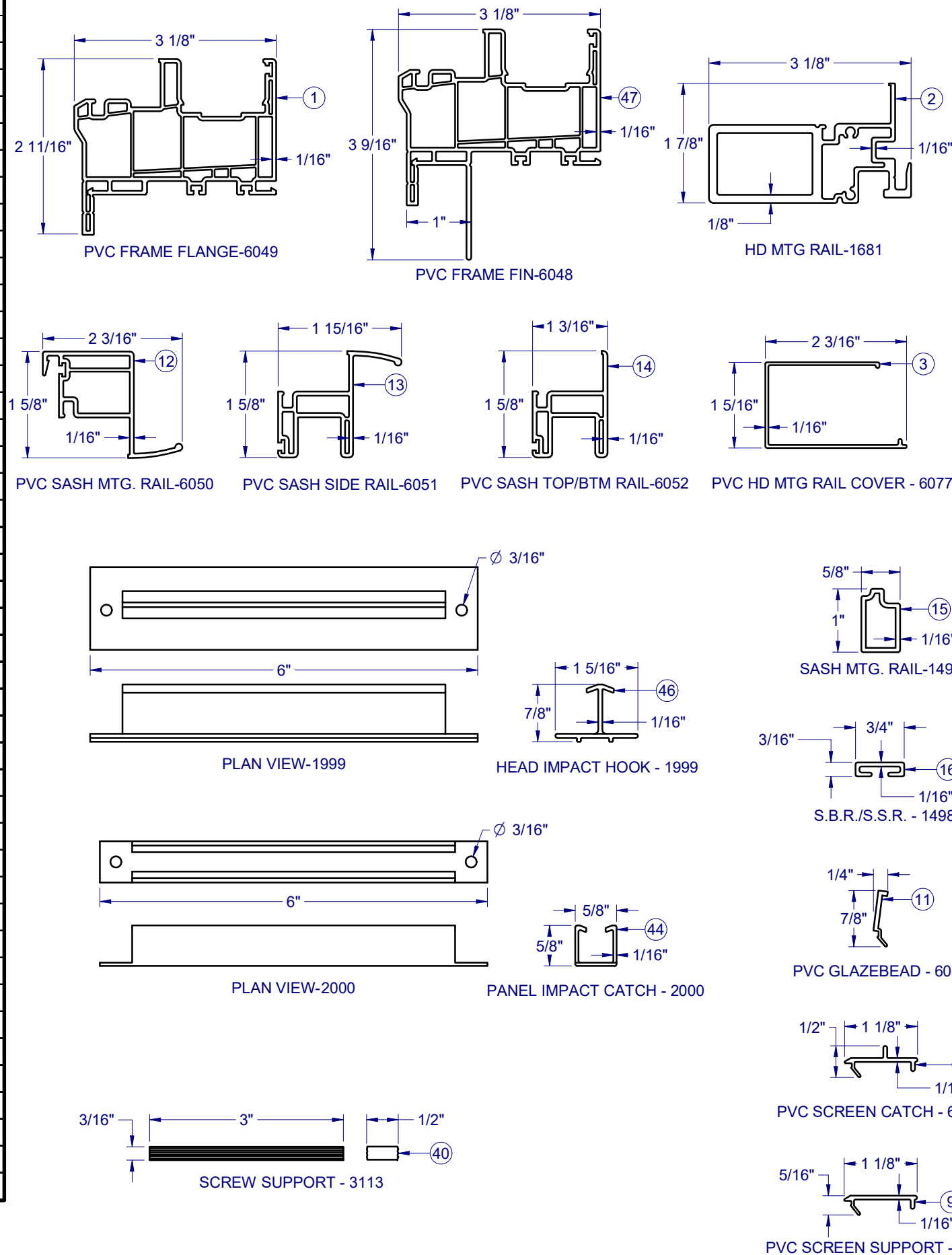


HEAD IMPACT HOOK LOCATIONS
1:20

PARTS LIST				
ITEM	PART #	DESCRIPTION	VENDOR	MATERIAL
1	H-6049	Main Frame, SH/HS, Flange, PVC	Mikron	PVC
2	H-1681	Fixed Rail, Heavy Duty, Aluminum	Keymark	Alum
3	S-6077	Cover, HD Fixed Rail, PVC	Mikron	PVC
5	P-4638	#8 x 2 1/2" Ph Mod Truss Type A TEK	Ajax	Steel
6	P-3342	Seam Sealer, SM-5504	Schnee	Silicone
7	S-1776	Roller Track	Keymark	Alum
8	S-6013	Screen Adapter, Jamb, PVC	Mikron	PVC
9	S-6014	Screen Adapter, Head & Sill, PVC	Mikron	PVC
10	P-4479	Weep Cover w/ Flap	M&M	Nylon
11	S-6064	Glazing Bead	Mikron	PVC
12	H-6050	Sash Meeting Rail, PVC	Mikron	PVC
13	H-6051	Sash Pull Rail, PVC	Mikron	PVC
14	H-6052	Sash Top/Bot. Rail, PVC	Mikron	PVC
15	H-1497	Reinf. Sash Meet. Rail	Keymark	Alum
16	H-1498	Reinforcement, Sash, Side Rail	Keymark	Alum
17	H-1699	Reinforcement, Sash Pull Rail	Keymark	Alum
18	P-3429	Wstp., 0.270 x .187 back FinSeal, Gra	Ultrafab	
19	P-3783	Lock, Impact, PVC	Interlock	
20	P-4051	#8 x 1 1/4" Ph Flat Tek, Wht.	Fastenal	Steel
21	P-4069	Keeper, Impact, PVC	Interlock	
22	P-3539	#8 x 3/4" Square PH Tek, Wht.	Fastenal	Steel
26	P-4779	Roller, Tandem	M&M	Nylon
27	P-3541	#8 x 1/2" Quad PH TEK 2 Zinc	Fastenal	Steel
28	GLASS	SEE SHEET 2	CARDINAL	GLASS
29		Purfect Glaze "H" or Sikaflex 552	Henkel/Sika	Silicone
30	P-3028	Set. Blk., 85 Dur., 1/8" x 7/8" x 2" Lg.	Frank Lowe	Rubber
31	P-3218	Screen Frame	Allmetal	RollForm
32	P-4754	Screen Corner Key	Allmetal	Nylon
33	P-4755	Screen Corner Key w/Safety Tab	Allmetal	Nylon
34	P-3029	Screen Pull tab	Summit	
35	P-3033	Screen Spring	Fla. Spring	SS
36	P-3228	Screen Spline	Dapa	
37	P-4772	Screen Cloth, Fiberglass		
40	P-3113	Screw Support, PVC	Team Plastics	Rubber
41	P-3752	Cap Plug, 1/2" Hole	M&M	Nylon
43	S-1112	Reinforcement, Head, Jamb	Keymark	Alum
44	S-2000	Impact Channel, Sash	Keymark	Alum
45	P-3748	#6 X 5/8 Ph FH TEK, Zinc, Painted	Ajax	Steel
46	S-1999	Impact Hook, Frame, Head	Keymark	Alum
47	H-6048	Main Frame, SH/HS, Fin, PVC	Mikron	PVC
48	S-6055	Roller Track, PVC, (Anti-lift)	Mikron	PVC
49	P-5250	Lock, Impact, PVC, w/Flipper	Interlock	
50	P-4730	#8 x 1/2" Ph Mod Truss TEK	Fastenal	Steel

LINE ITEMS NOT USED:
4, 23-25, 38-39, 42

NOTE: ALL EXTRUSIONS ARE ALUMINUM 6063-T6 UNLESS OTHERWISE NOTED.



Custom WINDOW SYSTEMS
1900 SW 44TH AVE.
OCALA, FLORIDA 34474
WWW.CWS.CC

8200 PVC HORZ SLIDER IMPACT

NO.	DESCRIPTION	BY	DATE
B	IBC/IRC REF. 2018 UPDATE	JLD	4/29/20
A	REVISED TO TDI REQUEST	JML	3/27/17

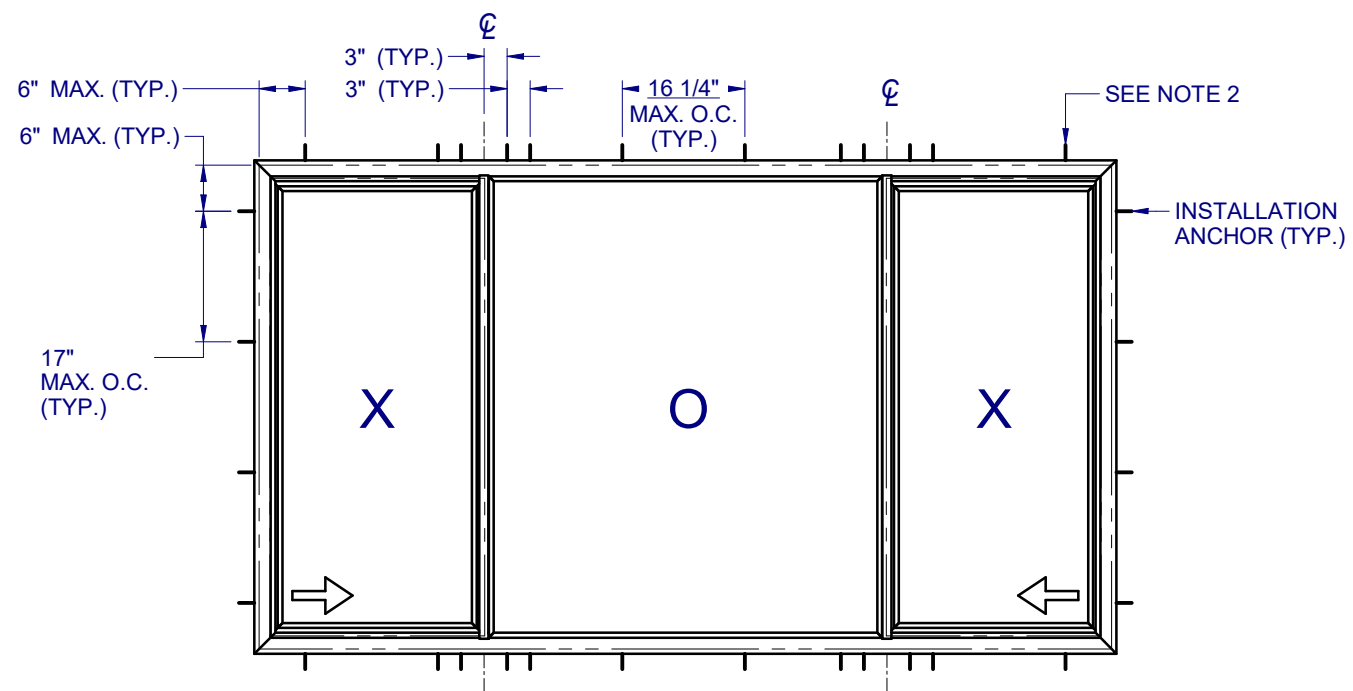
5/28/2020

LUCAS A. TURNER, P.E.
TX PE # 115094
TBPE REG. #F-18075
2428 OLD NATCHEZ TRC TRL
CAMDEN, TN 38320
PH. 941-380-1574

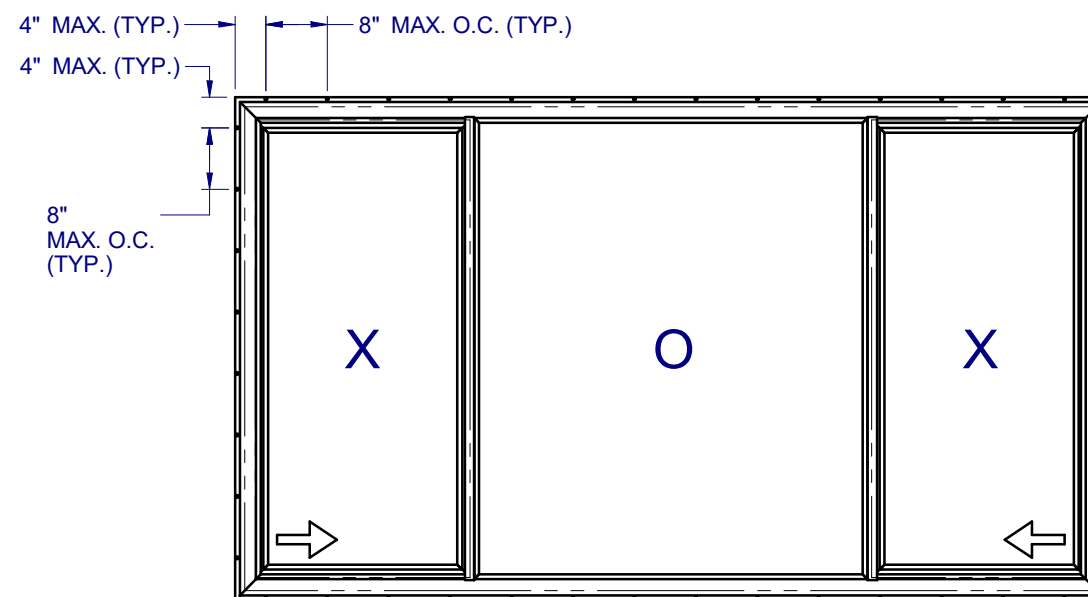
BOM AND EXTRUSIONS

DRAWN BY:	DATE:
EMK	11/12/15
DWG #:	REV.:
TDI-868	B
SCALE:	SHEET
1:2	4 OF 6

**8200 PVC
HORZ SLIDER
IMPACT**



ANCHOR LAYOUT - (FLANGE)



ANCHOR LAYOUT - (FIN)

NOTES:

1. INSTALL ONE ANCHOR AT EACH INSTALLATION LOCATION. SILL ANCHOR SPACING SAME AS HEAD.
2. SHIM AS REQ AT EACH INSTALLATION ANCHOR USING LOAD BEARING SHIMS. MAX. ALLOWABLE SHIM STACK TO BE 1/4". USE SHIMS WHERE SPACE GREATER THAN 1/16" IS PRESENT. LOAD BEARING SHIMS SHALL BE CONSTRUCTED OF HIGH DENSITY PLASTIC OR BETTER. WOOD SHIMS ARE NOT ALLOWED.
3. ANCHOR TYPE, SIZE, SPACING AND EMBEDMENT SHALL BE AS SPECIFIED IN THESE DRAWINGS, SEE TABLE 1, SHEET 6.
4. ALL INSTALLATION ANCHORS MUST BE MADE OF OR PROTECTED WITH A CORROSION RESISTANT MATERIAL OR COATING. DISSIMILAR METALS OR MATERIALS IN CONTACT WITH PRESSURE TREATED WOOD MUST BE PROTECTED TO PREVENT REACTION.
5. INSTALLATION ANCHORS SHALL BE IN ACCORDANCE WITH ANCHOR MANUFACTURER'S INSTALLATION INSTRUCTIONS, AND ANCHORS SHALL NOT BE USED IN SUBSTRATES WITH STRENGTHS LESS THAN THE MINIMUM SPECIFIED IN TABLE 1, SHEET 6.
6. ANCHOR EMBEDMENT TO SUBSTRATE SHALL BE BEYOND WALL DRESSING OR STUCCO. FOR CONCRETE/CMU OPENINGS, EMBEDMENT SHALL BE BEYOND WOOD BUCKS, IF USED, INTO SUBSTRATE. INSTALLATIONS TO SOLID CONCRETE OR GROUT-FILLED CMU MAY INCLUDE BUT DO NOT REQUIRE 1X WOOD BUCKS BETWEEN THE PRODUCT AND SUBSTRATE. INSTALLATIONS TO HOLLOW CMU REQUIRE THE USE OF 1X BUCKS BETWEEN THE PRODUCT AND SUBSTRATE.
7. A MINIMUM CENTER-TO-CENTER SPACING SHALL BE MAINTAINED BETWEEN ALL FASTENERS: 3" FOR MASONRY, 1" FOR WOOD AND METAL.
8. WOOD OR MASONRY OPENINGS, BUCKS AND BUCK FASTENERS SHALL BE PROPERLY DESIGNED BY THE ARCHITECT OR ENGINEER OF RECORD AND INSTALLED TO TRANSFER WIND LOADS TO THE STRUCTURE. SUBSTRATES SHALL MEET THE MINIMUM STRENGTH REQUIREMENTS AS SHOWN IN TABLE 1, SHEET 6. CONCRETE AND MASONRY SUBSTRATES MAY NOT BE CRACKED.
9. SEALING AND FLASHING STRATEGIES FOR OVERALL WATER RESISTANCE OF INSTALLATION SHALL BE DONE BY OTHERS FOLLOWING THE CURRENT VERSION OF THE REFERENCE DOCUMENTS: FMA/AAMA 100(FIN WINDOWS), FMA/AAMA 200(FLANGE WINDOWS), FMA/WDMA 250(BOX WINDOWS), FMA/AAMA/WDMA 300(EXTERIOR DOORS)

NO.	DESCRIPTION:	BY:	DATE:
B	IBC/IRC REF. 2018 UPDATE	JLD	4/29/20
A	REVISED TO TDI REQUEST	JML	3/27/17



5/28/2020

LUCAS A. TURNER, P.E.
TX PE # 115094
TBPE REG. #F-18075
2428 OLD NATCHEZ TRC TRL
CAMDEN, TN 38320
PH. 941-380-1574

SHEET DESCRIPTION:
ANCHOR SCHEDULE AND NOTES

DRAWN BY:	DATE:
EMK	11/12/15
DWG #:	REV.:
TDI-868	B
SCALE:	SHEET
1:25	5 OF 6

**8200 PVC
HORZ SLIDER
IMPACT**

NO.	DESCRIPTION	BY	DATE
B	IBC/IRC REF. 2018 UPDATE	JLD	4/29/20
A	REVISED TO TDI REQUEST	JML	3/27/17

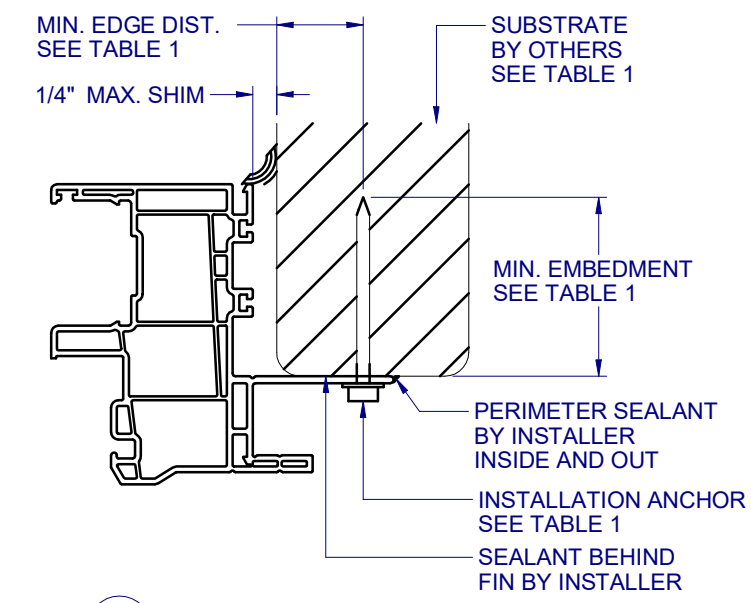
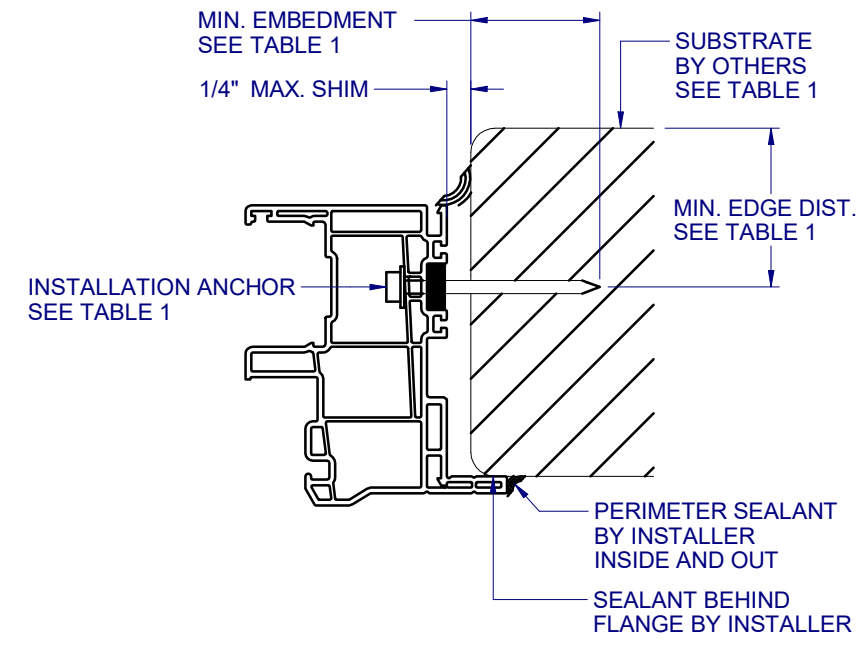
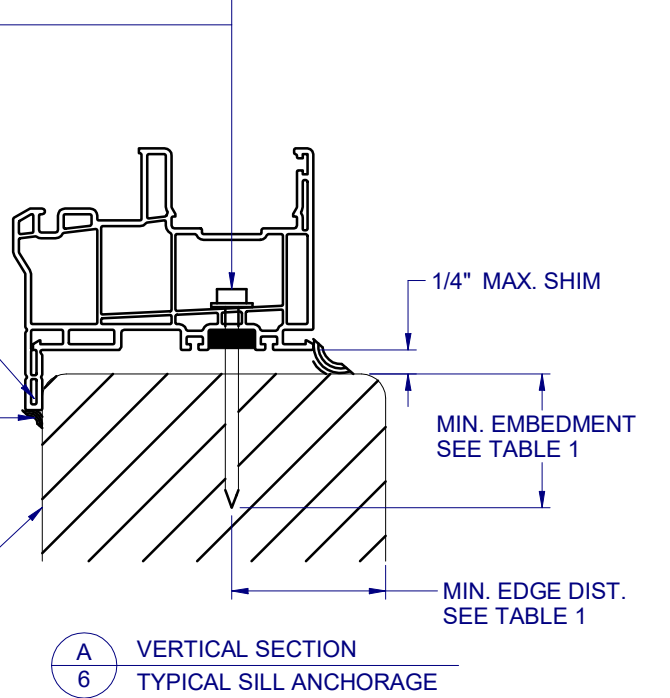
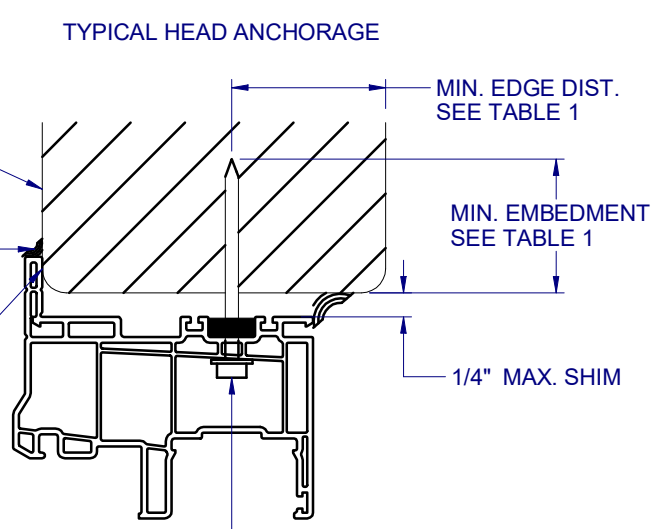


5/28/2020

LUCAS A. TURNER, P.E.
TX PE # 115094
TBPE REG. #F-18075
2428 OLD NATCHEZ TRC TRL
CAMDEN, TN 38320
PH. 941-380-1574

INSTALLATION DETAILS

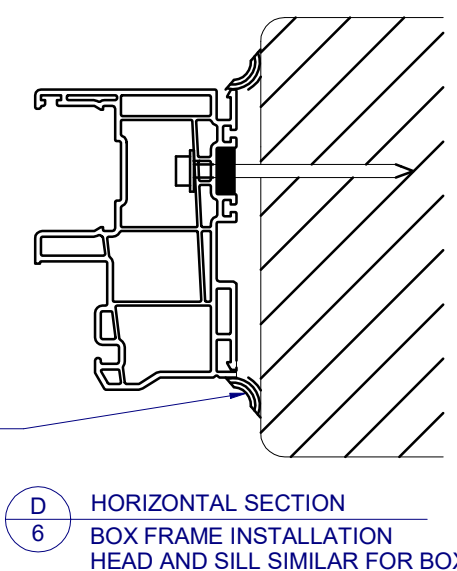
DRAWN BY:	DATE:
EMK	11/12/15
DWG #:	REV.:
TDI-868	B
SCALE:	SHEET
1:2	6 OF 6



A
6 VERTICAL SECTION
TYPICAL SILL ANCHORAGE

B
6 HORIZONTAL SECTION
TYPICAL JAMB ANCHORAGE

C
6 HORIZONTAL SECTION
TYPICAL FIN ANCHORAGE
HEAD AND SILL SIMILAR FOR FIN INSTALLATION



D
6 HORIZONTAL SECTION
BOX FRAME INSTALLATION
HEAD AND SILL SIMILAR FOR BOX INSTALLATION

FLANGE REMOVAL NOTE: PARTIALLY OR FULLY REMOVING THE FLANGE, UP TO AND INCLUDING A BOX-FRAME APPLICATION IS ACCEPTABLE PROVIDED:

- MIN. 1/4" FILLET OF CONSTRUCTION-GRADE ADHESIVE CAULK IS APPLIED INSIDE AND OUT, FULL PERIMETER, BY INSTALLER.
- PRODUCT ANCHORAGE IS IN ACCORDANCE WITH REQUIREMENTS AS SHOWN FOR FLANGE WINDOWS.

TABLE 1: APPROVED INSTALLATION FASTENERS

FRAME TYPE	SUBSTRATE TYPE	ANCHOR TYPE	MIN. EMBEDMENT	MIN. EDGE DIST.
FLANGE	CONCRETE (2.0 KSI MIN.)	3/16" ITW TAPCON	1-1/2"	1-1/8"
FLANGE	HOLLOW OR GROUT-FILLED CMU (117 PCF MIN.)	3/16" ITW TAPCON	1"	2"
FLANGE	CONCRETE (2.85 KSI MIN.)	3/16" ELCO ULTRACON	1"	1"
FLANGE	GROUT-FILLED CMU (ASTM C-90)	3/16" ELCO ULTRACON	1-1/4"	2-1/2"
FLANGE	2X MIN. SOUTHERN PINE (G=0.55)	3/16" ITW TAPCON OR ELCO ULTRACON	1-3/8"	7/8"
FLANGE	2X MIN. SOUTHERN PINE (G=0.55)	#10 PHILLIPS PH SHEET METAL SCREW W/ WASHER COMBO	2"	7/8"
FLANGE	16 GAUGE (0.060") MIN. STEEL STUD (33 KSI YIELD MIN)	#10-16 HILTI KWIK-FLEX OR ITW TEKS SELF-DRILLING SCREW	FULL THREAD THRU 0.060"	7/16"
FLANGE	1/8" ALUM. (6063-T5 MIN.) OR 1/8" STEEL (33 KSI MIN.)	#10 GRADE 5 SELF-TAPPING / DRILLING SCREW	FULL THREAD THRU 0.125"	7/16"
FIN	2X MIN. SOUTHERN PINE (G=0.55)	#8 PHILLIPS PH SHEET METAL SCREW W/ WASHER COMBO	1-1/2"	1/2"