

REVISIONS			
REV	DESCRIPTION	DATE	APPROVED
A	REVISED PER NEW REQUIREMENTS	08/05/19	R.L.

NOTES:

1. THE PRODUCT SHOWN HEREIN IS DESIGNED AND MANUFACTURED TO COMPLY WITH REQUIREMENTS OF THE 2006 IBC & 2006 IRC WITH STATE OF TEXAS MODIFICATIONS AND WITH THE 2009 IBC, 2009 IRC, 2012 IBC, 2012 IRC, 2015 IBC AND 2015 IRC.
2. WOOD FRAMING AND MASONRY OPENING TO BE DESIGNED AND ANCHORED TO PROPERLY TRANSFER ALL LOADS TO STRUCTURE. FRAMING AND MASONRY OPENING IS THE RESPONSIBILITY OF THE ARCHITECT OR ENGINEER OF RECORD.
3. 1X BUCK OVER MASONRY/CONCRETE IS OPTIONAL.
4. WHERE SHIM OR BUCK THICKNESS IS LESS THAN 1-1/2" WINDOW UNITS MUST BE ANCHORED THROUGH THE FRAME IN ACCORDANCE WITH MANUFACTURER'S PUBLISHED INSTALLATION INSTRUCTIONS. ANCHORS SHALL BE SECURELY FASTENED DIRECTLY INTO MASONRY, CONCRETE OR OTHER STRUCTURAL SUBSTRATE MATERIAL.
5. WHERE WOOD BUCK THICKNESS IS 1-1/2" OR GREATER, BUCK SHALL BE SECURELY FASTENED TO MASONRY, CONCRETE OR OTHER STRUCTURAL SUBSTRATE. WINDOW UNITS MAY BE ANCHORED THROUGH FRAME TO SECURED WOOD BUCK IN ACCORDANCE WITH MANUFACTURER'S PUBLISHED INSTALLATION INSTRUCTIONS.
6. WHERE 1X BUCK IS NOT USED DISSIMILAR MATERIALS MUST BE SEPARATED WITH APPROVED COATING OR MEMBRANE. SELECTION OF COATING OR MEMBRANE IS THE RESPONSIBILITY OF THE ARCHITECT OR ENGINEER OF RECORD.
7. BUCKS SHALL EXTEND BEYOND WINDOW INTERIOR FACE SO THAT FULL FRAME SUPPORT IS PROVIDED.
8. FOR FIN INSTALLATION SHIM AS NEEDED. FOR FRAME INSTALLATION SHIM AS REQUIRED AT EACH ANCHOR LOCATION WITH LOAD BEARING SHIM. SHIM WHERE SPACE OF 1/16" OR GREATER OCCURS. MAXIMUM ALLOWABLE SHIM STACK TO BE 1/4".
9. SHIMS SHALL BE LOCATED, APPLIED AND MADE FROM MATERIALS AND THICKNESS CAPABLE OF SUSTAINING APPLICABLE LOADS.
10. WIND LOAD DURATION FACTOR Cd=1.6 WAS USED FOR WOOD ANCHOR CALCULATIONS.
11. FRAME MATERIAL: EXTRUDED RIGID PVC.
12. UNITS MUST BE GLAZED PER ASTM E1300-04/09.
13. APPROVED IMPACT PROTECTIVE SYSTEM IS REQUIRED FOR THIS PRODUCT IN WIND BORNE DEBRIS REGIONS.
14. FOR ANCHORING THROUGH FIN INTO WOOD FRAMING OR 2X BUCK USE #8 WOOD SCREWS WITH SUFFICIENT LENGTH TO ACHIEVE A 1 1/4" MINIMUM EMBEDMENT INTO SUBSTRATE. LOCATE ANCHORS AS SHOWN IN ELEVATIONS AND INSTALLATION DETAILS.

15. FOR ANCHORING THROUGH FRAME INTO WOOD FRAMING OR 2X BUCK USE #8 WOOD SCREWS WITH SUFFICIENT LENGTH TO ACHIEVE A 1 1/4" MINIMUM EMBEDMENT INTO SUBSTRATE. LOCATE ANCHORS AS SHOWN IN ELEVATIONS AND INSTALLATION DETAILS.
16. FOR ANCHORING THROUGH FRAME INTO MASONRY/CONCRETE USE 3/16" TAPCONS WITH SUFFICIENT LENGTH TO ACHIEVE A 1 1/4" MINIMUM EMBEDMENT INTO SUBSTRATE WITH 2" MINIMUM EDGE DISTANCE. LOCATE ANCHORS AS SHOWN IN ELEVATIONS AND INSTALLATION DETAILS.
17. FOR ANCHORING THROUGH FRAME INTO METAL STRUCTURE USE #8 SMS OR SELF DRILLING SCREWS WITH SUFFICIENT LENGTH TO ACHIEVE 3 THREADS MINIMUM BEYOND STRUCTURE INTERIOR WALL. LOCATE ANCHORS AS SHOWN IN ELEVATIONS AND INSTALLATION DETAILS.
18. ALL FASTENERS TO BE CORROSION RESISTANT.
19. INSTALLATION ANCHORS SHALL BE INSTALLED IN ACCORDANCE WITH ANCHOR MANUFACTURER'S INSTALLATION INSTRUCTIONS AND ANCHORS SHALL NOT BE USED IN SUBSTRATES WITH STRENGTHS LESS THAN THE MINIMUM STRENGTH SPECIFIED BELOW:
 - A. WOOD - MINIMUM SPECIFIC GRAVITY OF G=0.42
 - B. CONCRETE - MINIMUM COMPRESSIVE STRENGTH OF 3,192 PSI.
 - C. MASONRY - STRENGTH CONFORMANCE TO ASTM C-90, GRADE N, TYPE 1 (OR GREATER).
 - D. METAL STRUCTURE: STEEL 18GA, 33KSI OR ALUMINUM 6063-T5 .048" THICK MINIMUM

TABLE OF CONTENTS	
SHEET NO.	DESCRIPTION
1	NOTES
2	ELEVATIONS
3 - 6	INSTALLATION DETAILS
7	COMPONENTS

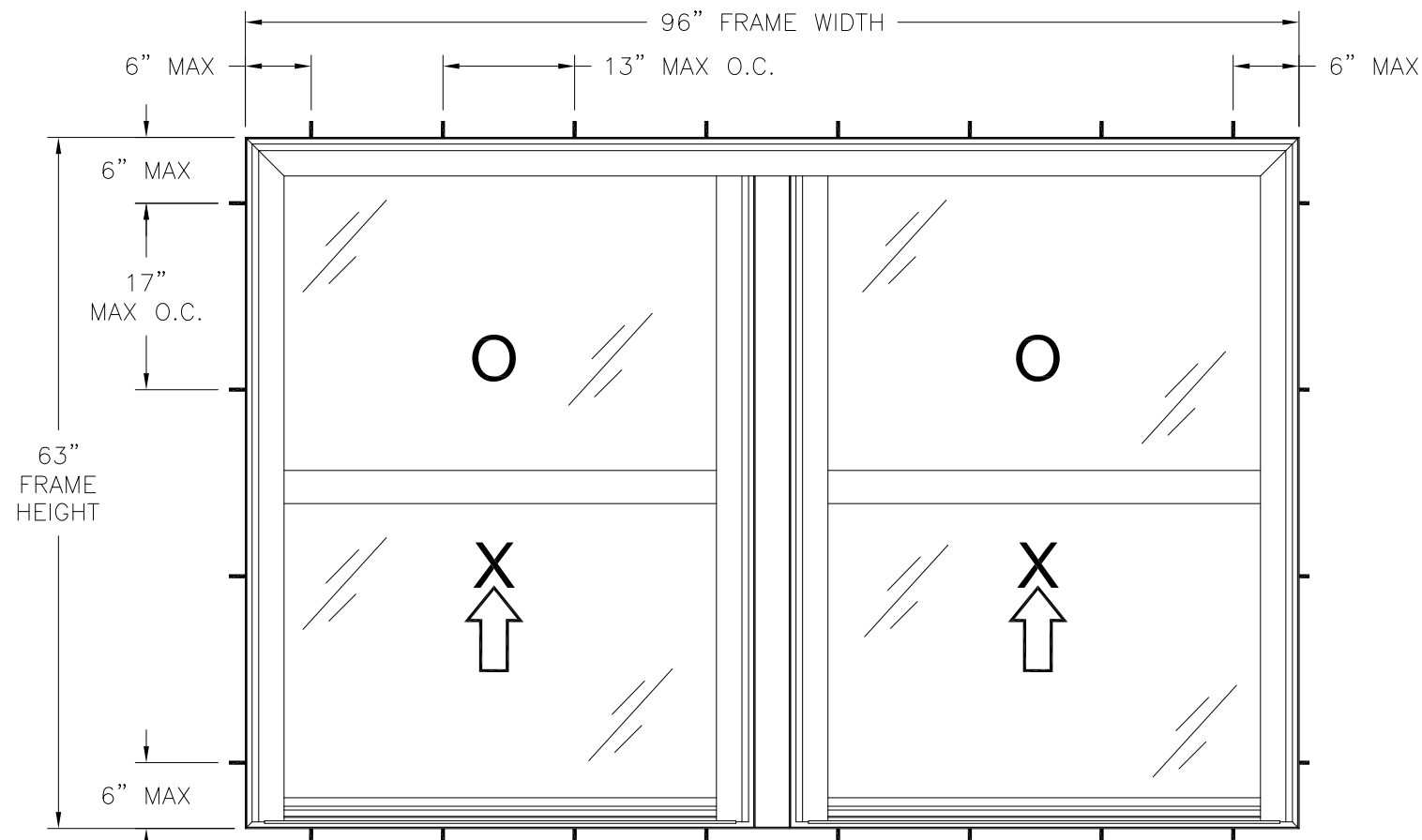
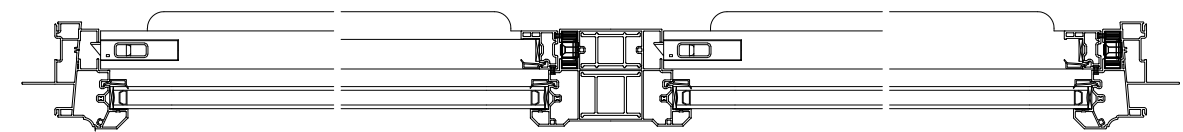
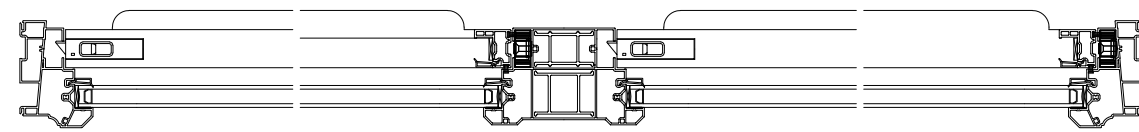
WINDOW MART 5760 ALBERT PIKE ROYAL, AR 71968		
7122 UNIFRAME TWIN SINGLE HUNG WINDOW 96" X 63" NON-IMPACT NOTES		
DRAWN: N.G.	DWG NO. 08-02687	REV A
SCALE NTS	DATE 05/04/15	SHEET 1 OF 7
L. ROBERTO LOMAS P.E. 1432 WOODFORD RD LEWISVILLE, NC 27023 434-688-0609 rllomas@lrlomaspe.com		

SIGNED: 08/07/2019

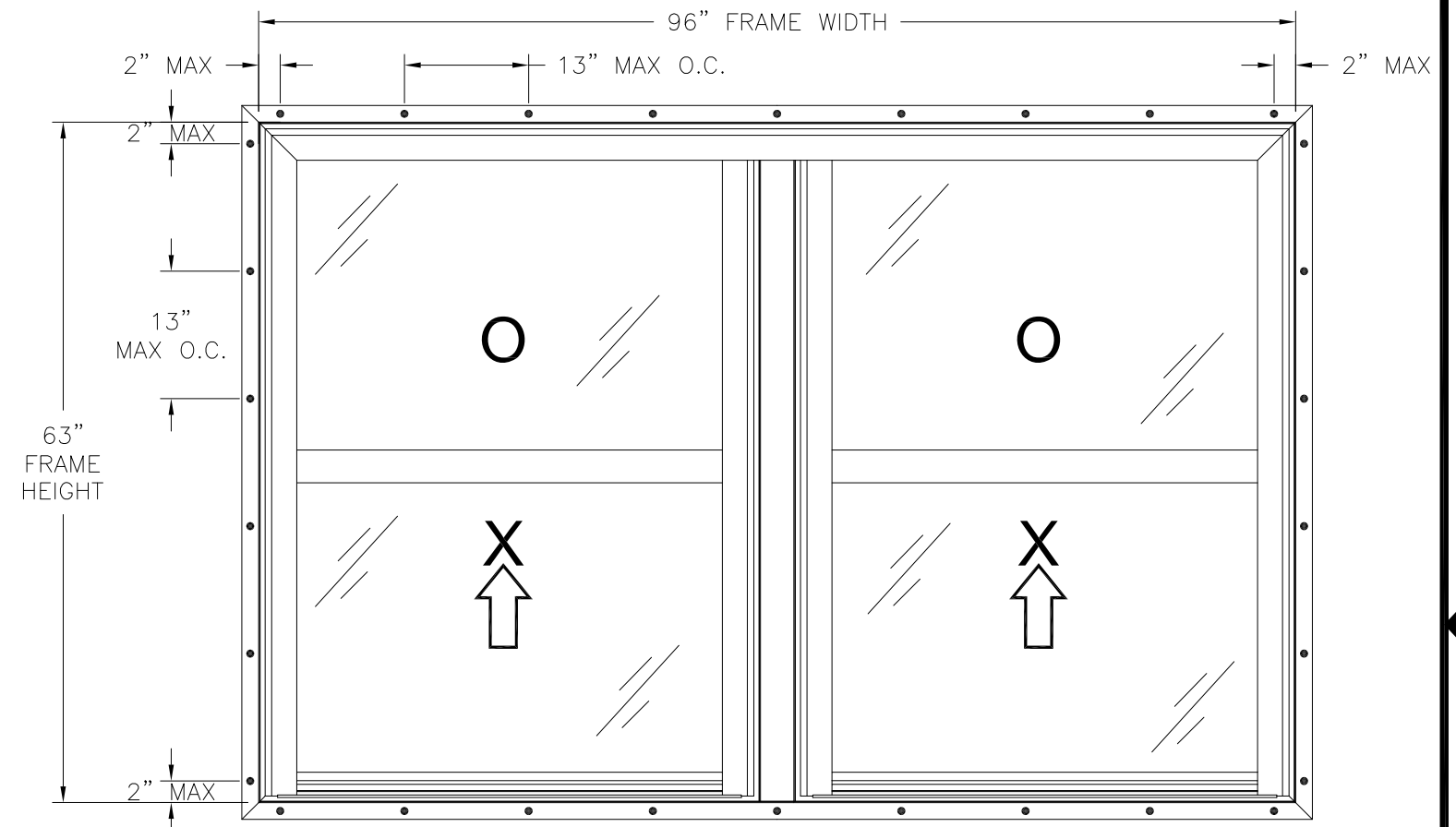


Luis R. Lomas P.E.
TX No.: 101889

REVISIONS			
REV	DESCRIPTION	DATE	APPROVED
A	REVISED PER NEW REQUIREMENTS	08/05/19	R.L.



7122 UNIFRAME TWIN SINGLE HUNG
EXTERIOR VIEW
FRAME INSTALLATION



7122 UNIFRAME TWIN SINGLE HUNG
EXTERIOR VIEW
FIN INSTALLATION

DESIGN PRESSURE RATING	IMPACT RATING
±35.0PSF	NONE

96" X 63" UNIT SHOWN. OTHER SIZES APPROVED AS LONG AS
FRAME AREA DOES NOT EXCEED 42.0 FT²

NOTES:

1. MAXIMUM SASH SIZE: 44 5/8" X 30 5/8"
2. MAXIMUM D.L.O.: 42 13/16" X 28 1/16"
3. (4) 3/8" X 3/16" WEEP SLOT AT BOTTOM RAIL GLAZING POCKET THROUGH BOTTOM SURFACE, ONE AT EACH END.
4. (4) 1 1/8" WEEP NOTCH AT SILL SCREEN RETENTION LEG, ONE AT EACH JAMB/MULLION.
5. (4) 1 3/4" WEEP NOTCH AT SILL SCREEN RETENTION LEG, ONE AT EACH JAMB/MULLION
6. (4) 3/16" WEEP SLOT AT FIXED MEETING RAIL GLAZING POCKET THROUGH BOTTOM SURFACE, ONE AT EACH END.
7. (4) 3/16" X 3/16" WEEP SLOT AT FIXED MEETING RAIL BOTTOM SURFACE OF SHEAR BLOCK, ONE PER BLOCK.

HARDWARE SCHEDULE

A.	(4) COMPOSITE CAM LOCK WITH KEEPER (2802) 8" FROM EACH END OF LOCK RAIL
B.	(4) CONSTANT FORCE BALANCE WITH TILT LOCKING SHOE, ONE PER JAMB/MULLION
C.	(4) METAL PIVOT BARS, ONE AT EACH END OF BOTTOM RAILS
D.	(4) PLASTIC FLUSH MOUNT TILT LATCH, ONE AT EACH END OF LOCK RAILS
E.	EXTRUDED ALUMINUM REINFORCEMENT (10300076) ON MULLION
F.	EXTRUDED ALUMINUM REINFORCEMENT (10300077) ON MULLION
G.	FIBERGLASS REINFORCEMENT (10000670) ON FIXED MEETING RAILS

SIGNED: 08/07/2019

WINDOW MART

5760 ALBERT PIKE
ROYAL, AR 71968

7122 UNIFRAME TWIN SINGLE HUNG WINDOW
96" X 63" NON-IMPACT
ELEVATIONS

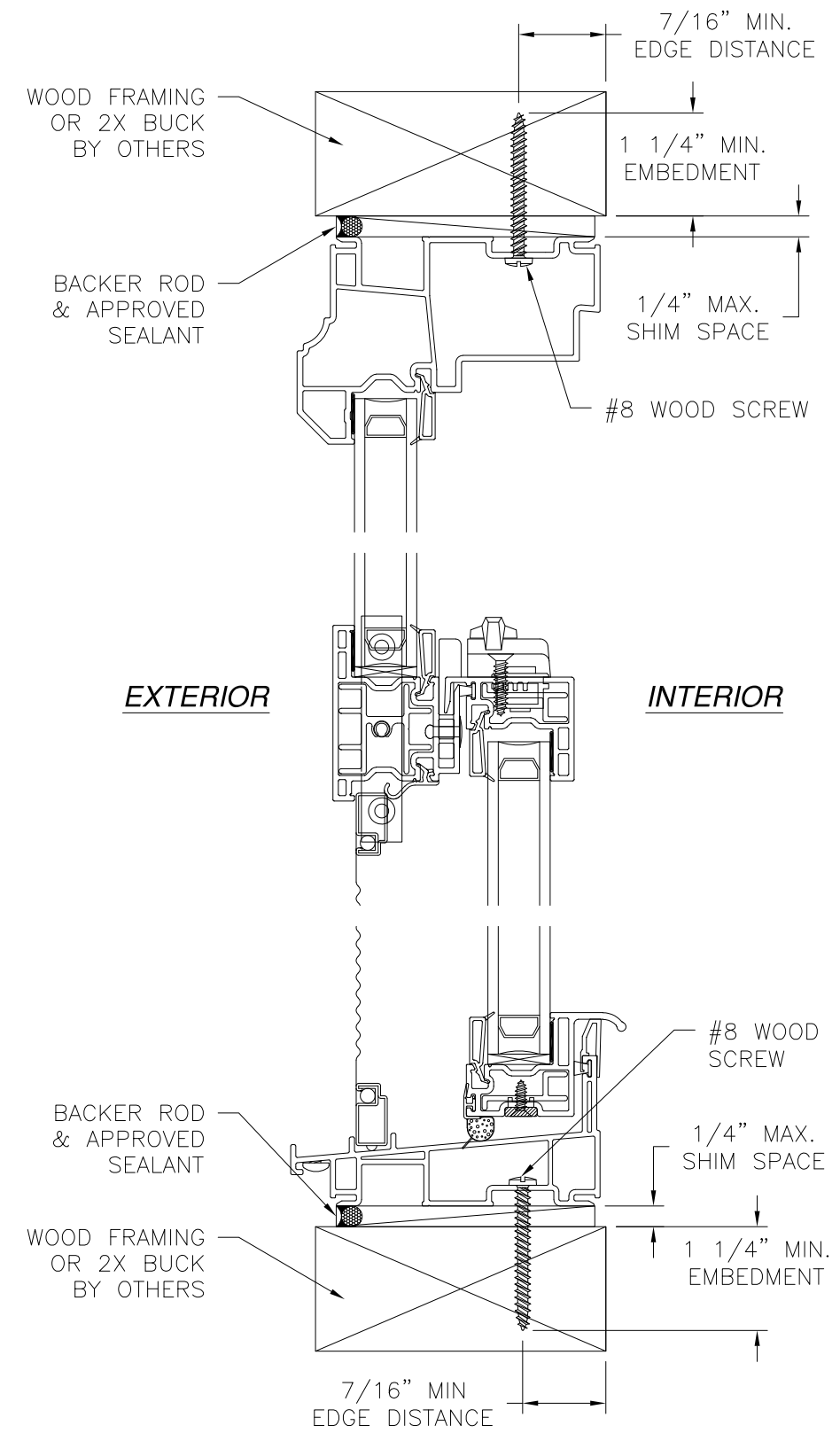
DRAWN: N.G.	DWG NO. 08-02687	REV A
SCALE NTS	DATE 05/04/15	SHEET 2 OF 7

L. ROBERTO LOMAS P.E.
1432 WOODFORD RD LEWISVILLE, NC 27023
434-688-0609 rllomas@rlomaspe.com



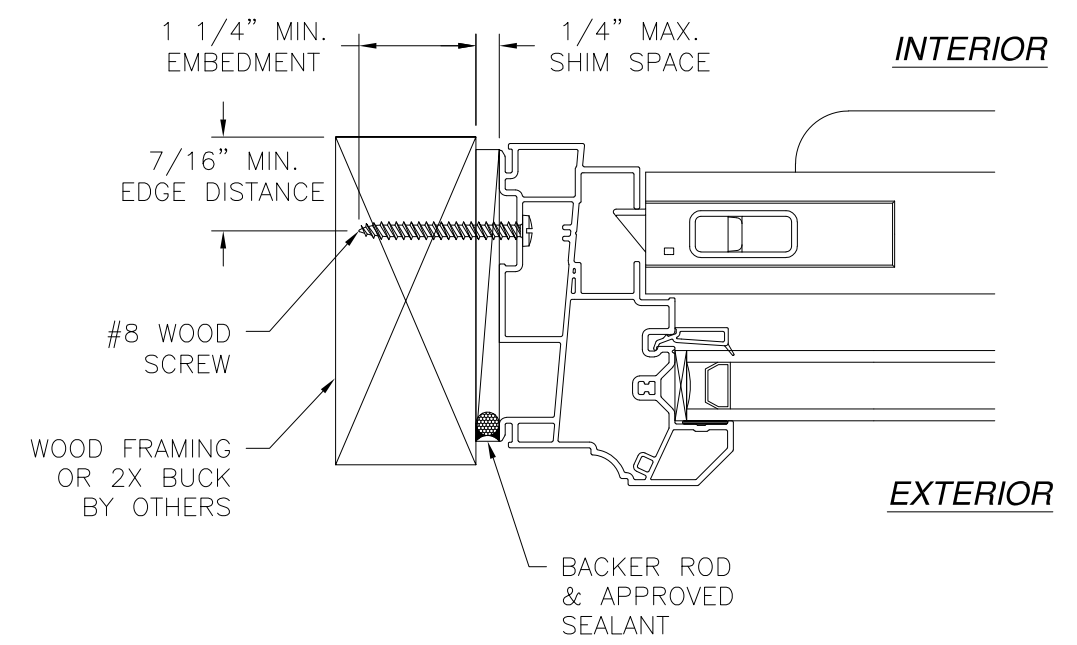
Luis R. Lomas P.E.
TX No.: 101889

REVISIONS			
REV	DESCRIPTION	DATE	APPROVED
A	REVISED PER NEW REQUIREMENTS	08/05/19	R.L.



VERTICAL CROSS SECTION
WOOD FRAMING OR 2X BUCK INSTALLATION

NOTES:
1. INTERIOR AND EXTERIOR FINISHES, BY OTHERS, NOT SHOWN FOR CLARITY.
2. PERIMETER AND JOINT SEALANT BY OTHERS TO BE DESIGNED IN ACCORDANCE WITH ASTM E2112



JAMB INSTALLATION DETAIL
WOOD FRAMING OR 2X BUCK INSTALLATION

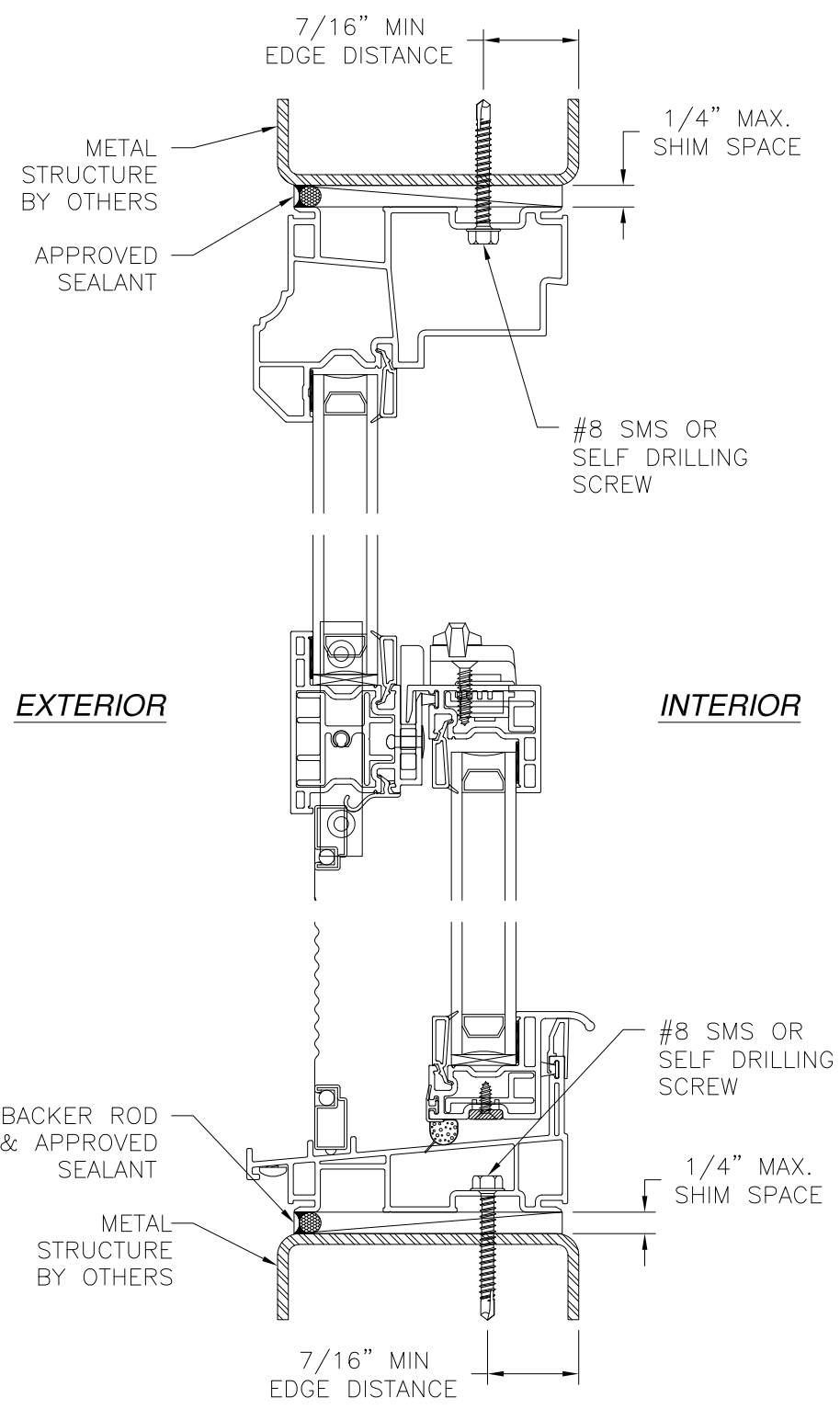
WINDOW MART 5760 ALBERT PIKE ROYAL, AR 71968		
7122 UNIFRAME TWIN SINGLE HUNG WINDOW 96" X 63" NON-IMPACT INSTALLATION DETAILS		
DRAWN: N.G.	DWG NO. 08-02687	REV A
SCALE NTS	DATE 05/04/15	SHEET 3 OF 7
L. ROBERTO LOMAS P.E. 1432 WOODFORD RD LEWISVILLE, NC 27023 434-688-0609 rllomas@lrlomaspe.com		

SIGNED: 08/07/2019



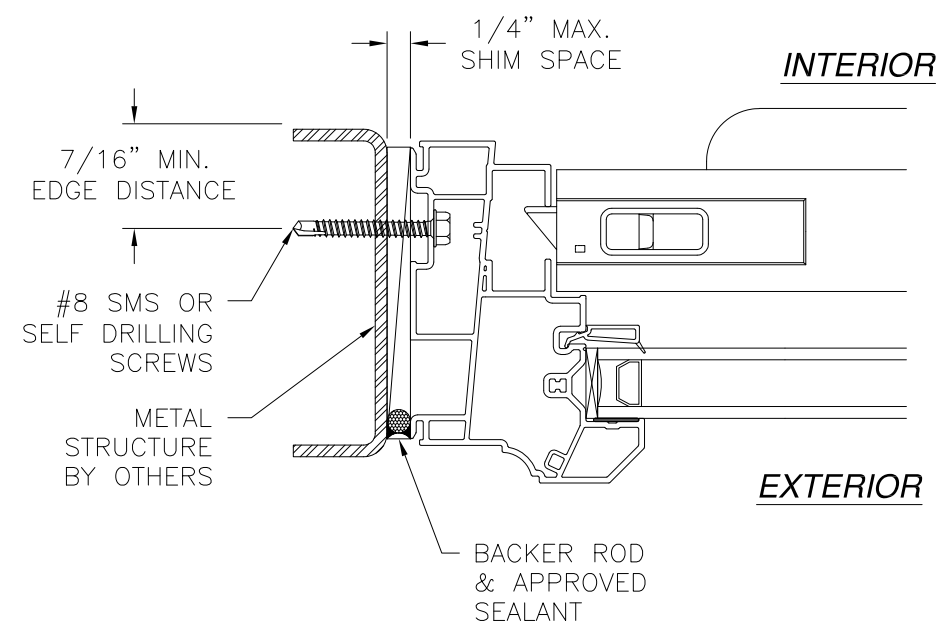
Luis R. Lomas P.E.
TX No.: 101889

REVISIONS			
REV	DESCRIPTION	DATE	APPROVED
A	REVISED PER NEW REQUIREMENTS	08/05/19	R.L.



VERTICAL CROSS SECTION
METAL STRUCTURE INSTALLATION

NOTES:
 1. INTERIOR AND EXTERIOR FINISHES, BY OTHERS, NOT SHOWN FOR CLARITY.
 2. PERIMETER AND JOINT SEALANT BY OTHERS TO BE DESIGNED IN ACCORDANCE WITH ASTM E2112



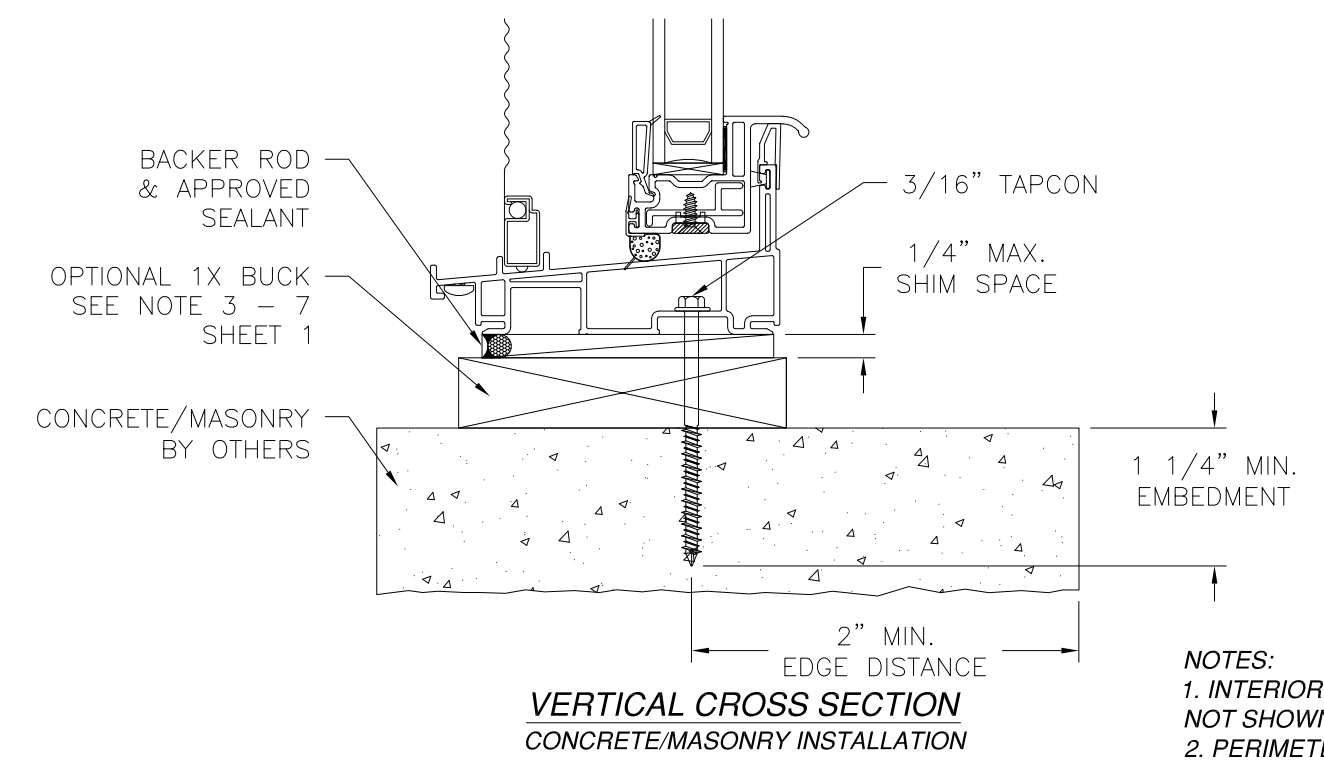
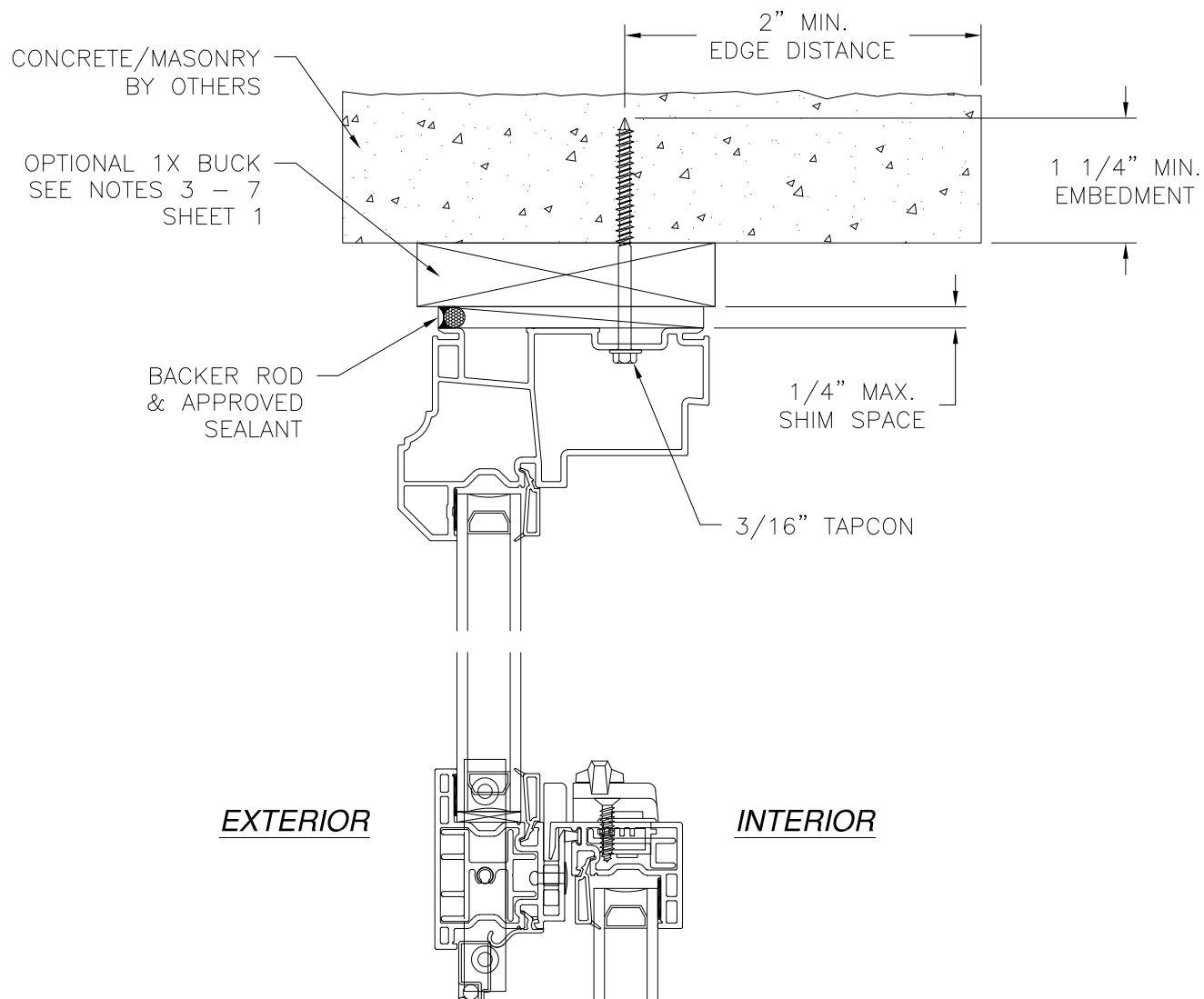
JAMB INSTALLATION DETAIL
METAL STRUCTURE INSTALLATION

WINDOW MART 5760 ALBERT PIKE ROYAL, AR 71968		
7122 UNIFRAME TWIN SINGLE HUNG WINDOW 96" X 63" NON-IMPACT INSTALLATION DETAILS		
DRAWN: N.G.	DWG NO. 08-02687	REV A
SCALE NTS	DATE 05/04/15	SHEET 4 OF 7
L. ROBERTO LOMAS P.E. 1432 WOODFORD RD LEWISVILLE, NC 27023 434-688-0609 rllomas@rlomaspe.com		

SIGNED: 08/07/2019



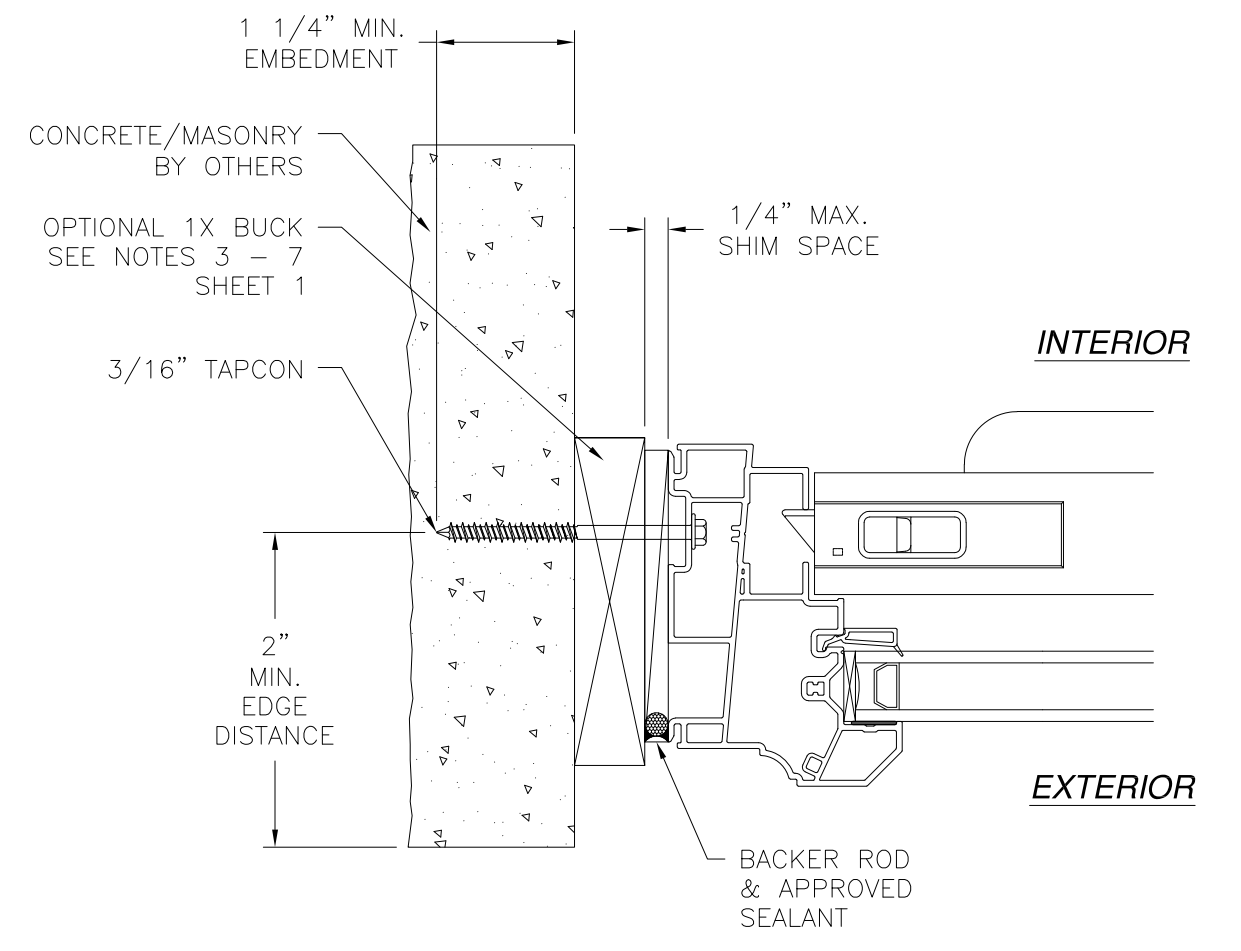
Luis R. Lomas P.E.
TX No.: 101889



**VERTICAL CROSS SECTION
CONCRETE/MASONRY INSTALLATION**

NOTES:
 1. INTERIOR AND EXTERIOR FINISHES, BY OTHERS, NOT SHOWN FOR CLARITY.
 2. PERIMETER AND JOINT SEALANT BY OTHERS TO BE DESIGNED IN ACCORDANCE WITH ASTM E2112

REVISIONS			
REV	DESCRIPTION	DATE	APPROVED
A	REVISED PER NEW REQUIREMENTS	08/05/19	R.L.



**JAMB INSTALLATION DETAIL
CONCRETE/MASONRY INSTALLATION**

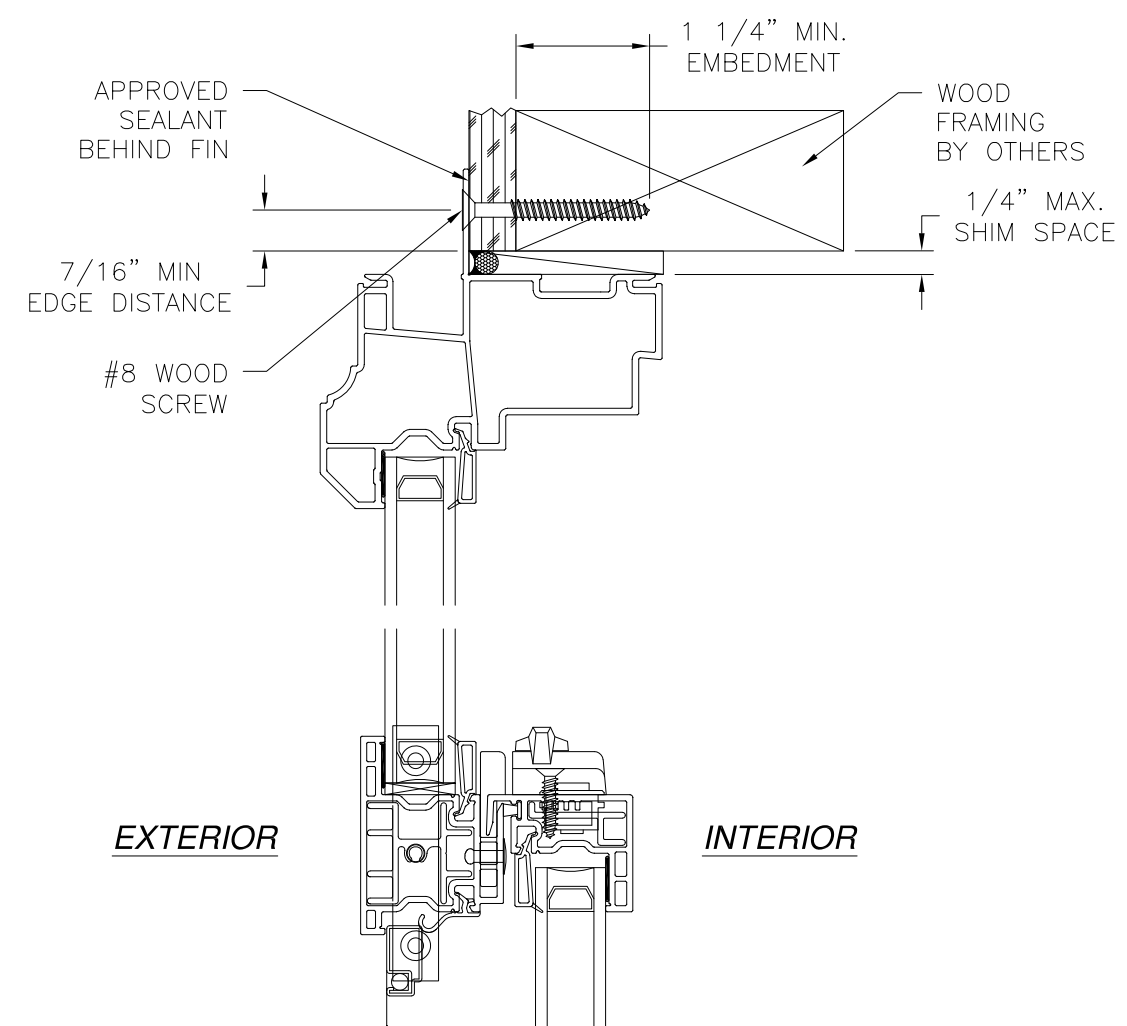
WINDOW MART 5760 ALBERT PIKE ROYAL, AR 71968		
7122 UNIFRAME TWIN SINGLE HUNG WINDOW 96" X 63" NON-IMPACT INSTALLATION DETAILS		
DRAWN: N.G.	DWG NO. 08-02687	REV A
SCALE NTS	DATE 05/04/15	SHEET 5 OF 7
L. ROBERTO LOMAS P.E. 1432 WOODFORD RD LEWISVILLE, NC 27023 434-688-0609 rllomas@lrlomaspe.com		

SIGNED: 08/07/2019

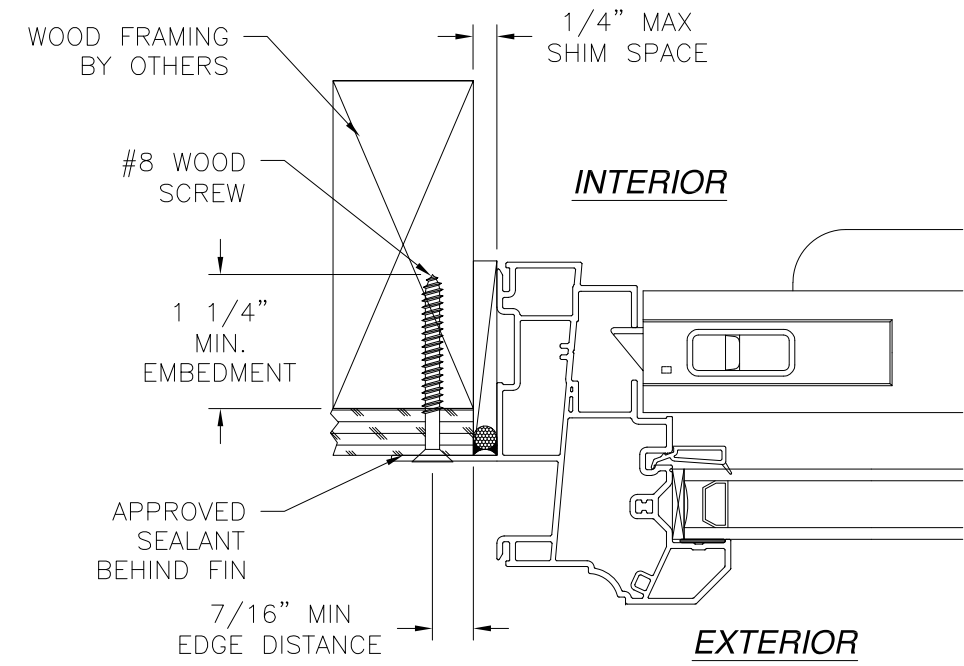


Luis R. Lomas P.E.
TX No.: 101889

REVISIONS			
REV	DESCRIPTION	DATE	APPROVED
A	REVISED PER NEW REQUIREMENTS	08/05/19	R.L.



VERTICAL CROSS SECTION
WOOD FRAMING OR 2X BUCK INSTALLATION



JAMB INSTALLATION DETAIL
WOOD FRAMING OR 2X BUCK INSTALLATION

- NOTES:**
1. INTERIOR AND EXTERIOR FINISHES, BY OTHERS, NOT SHOWN FOR CLARITY.
 2. PERIMETER AND JOINT SEALANT BY OTHERS TO BE DESIGNED IN ACCORDANCE WITH ASTM E2112

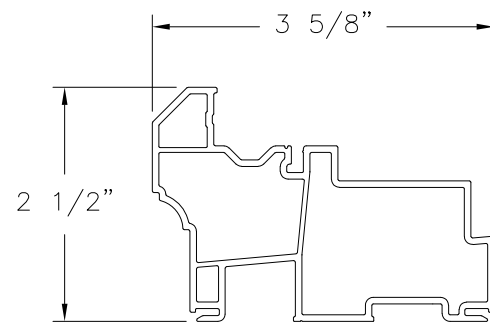
SIGNED: 08/07/2019

WINDOW MART 5760 ALBERT PIKE ROYAL, AR 71968		
7122 UNIFRAME TWIN SINGLE HUNG WINDOW 96" X 63" NON-IMPACT FIN INSTALLATION DETAILS		
DRAWN: N.G.	DWG NO. 08-02687	REV A
SCALE NTS	DATE 05/04/15	SHEET 6 OF 7
L. ROBERTO LOMAS P.E. 1432 WOODFORD RD LEWISVILLE, NC 27023 434-688-0609 rllomas@rlomaspe.com		

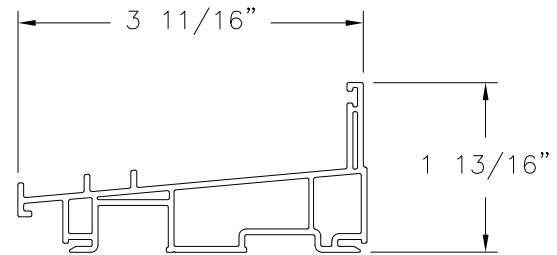


Luis R. Lomas P.E.
TX No.: 101889

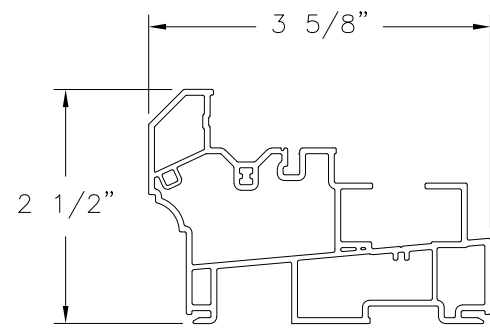
REVISIONS			
REV	DESCRIPTION	DATE	APPROVED
A	REVISED PER NEW REQUIREMENTS	08/05/19	R.L.



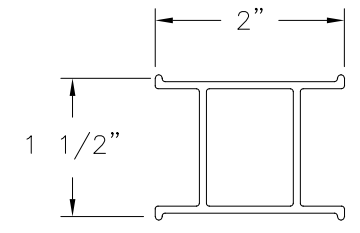
HEAD FRAME
EXTRUDED PVC (10008687)



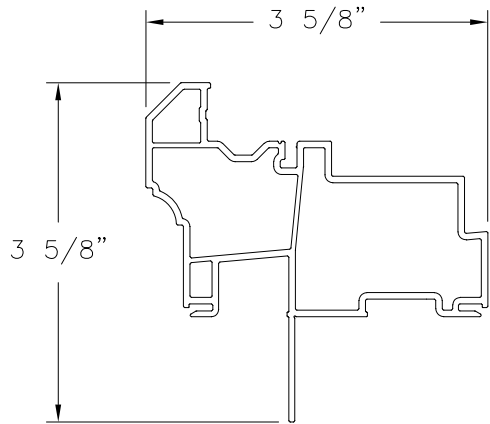
SILL FRAME
EXTRUDED PVC (10008673)



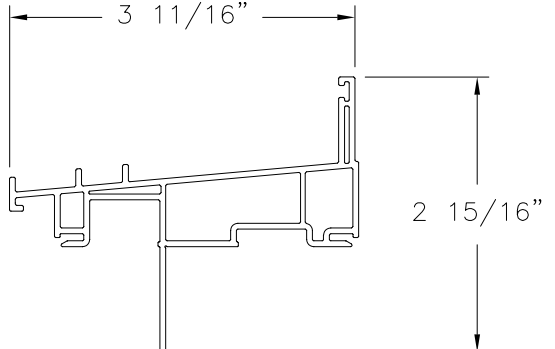
JAMB FRAME
EXTRUDED PVC (10008686)



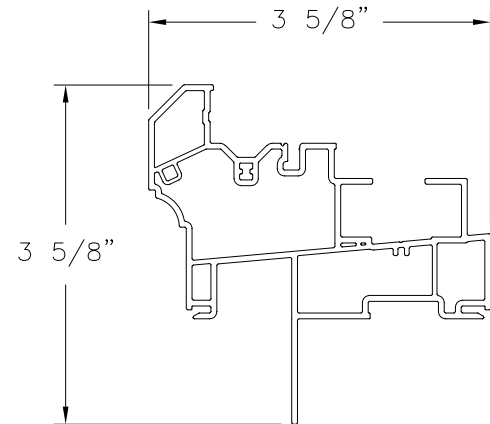
MULLION REINFORCEMENT
EXTRUDED ALUMINUM 6063-T5 (10300077)



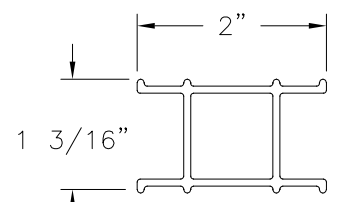
**HEAD FRAME
FIN INSTALLATION**
EXTRUDED PVC (10008687)



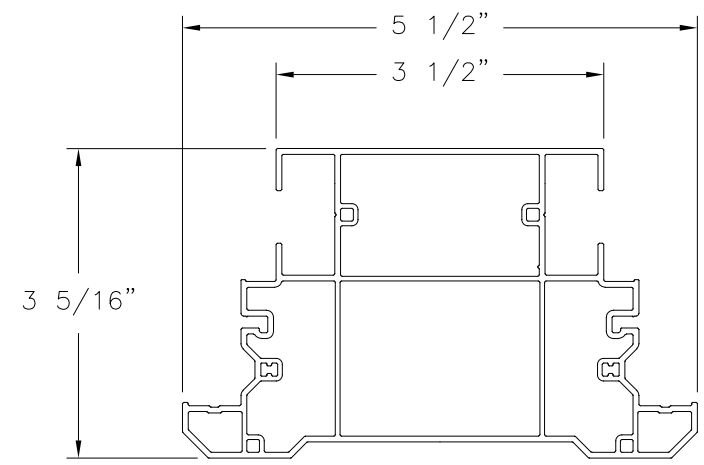
**SILL FRAME
FIN INSTALLATION**
EXTRUDED PVC (10008673)



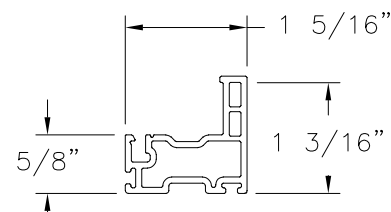
**JAMB FRAME
FIN INSTALLATION**
EXTRUDED PVC (10008686)



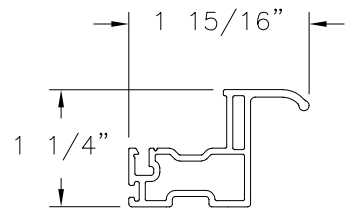
MULLION REINFORCEMENT
EXTRUDED ALUMINUM 6063-T5 (10300076)



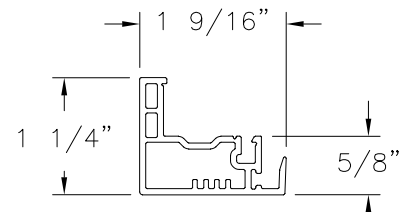
MULLION
EXTRUDED ALUMINUM



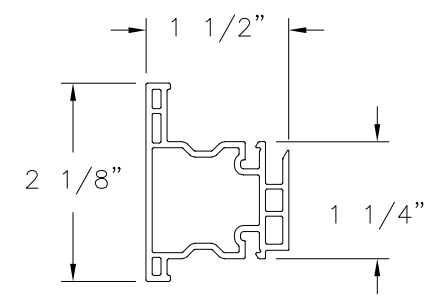
STILE
EXTRUDED PVC (10008875)



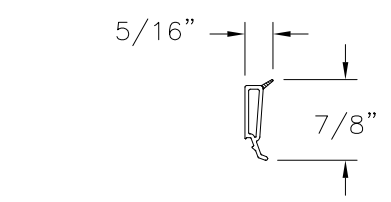
PULL STILE
EXTRUDED PVC (10008882)



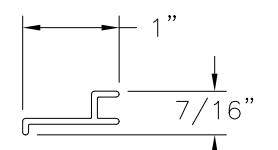
LOCK STILE
EXTRUDED PVC (10008895)



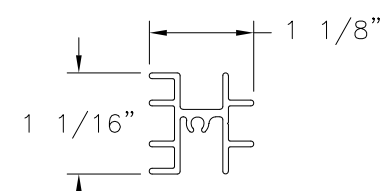
MEETING RAIL
EXTRUDED PVC



GLAZING BEAD
EXTRUDED PVC (10005470)



SASH REINFORCEMENT
FIBERGLASS



**MEETING RAIL
REINFORCEMENT**
FIBERGLASS

SIGNED: 08/07/2019

WINDOW MART
5760 ALBERT PIKE
ROYAL, AR 71968

7122 UNIFRAME TWIN SINGLE HUNG WINDOW
96" X 63" NON-IMPACT
COMPONENTS

DRAWN: N.G.	DWG NO. 08-02687	REV A
SCALE NTS	DATE 05/04/15	SHEET 7 OF 7

L. ROBERTO LOMAS P.E.
1432 WOODFORD RD LEWISVILLE, NC 27023
434-688-0609 rllomas@rlomaspe.com



Luis R. Lomas P.E.
TX No.: 101889