

REVISIONS			
REV	DESCRIPTION	DATE	APPROVED
A	REVISED COMPLIANCE	02/18/16	R.L.
B	REVISED PER NEW REQUIREMENTS	05/30/19	R.L.

NOTES:

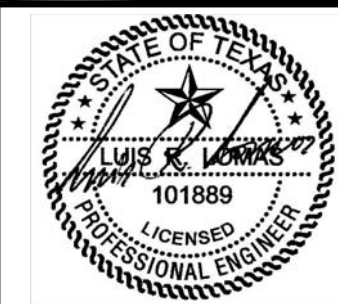
1. THE PRODUCT SHOWN HEREIN IS DESIGNED AND MANUFACTURED TO COMPLY WITH REQUIREMENTS OF THE 2006 IBC AND 2006 IRC WITH STATE OF TEXAS MODIFICATIONS AND THE 2009 IBC, 2009 IRC, 2012 IBC, 2012 IRC, 2015 IBC AND 2015 IRC.
2. WOOD FRAMING AND MASONRY OPENING TO BE DESIGNED AND ANCHORED TO PROPERLY TRANSFER ALL LOADS TO STRUCTURE. FRAMING AND MASONRY OPENING IS THE RESPONSIBILITY OF THE ARCHITECT OR ENGINEER OF RECORD.
3. 1X BUCK OVER MASONRY/CONCRETE IS OPTIONAL.
4. WHERE SHIM OR BUCK THICKNESS IS LESS THAN 1-1/2" WINDOW UNITS MUST BE ANCHORED THROUGH THE FRAME IN ACCORDANCE WITH MANUFACTURER'S PUBLISHED INSTALLATION INSTRUCTIONS. ANCHORS SHALL BE SECURELY FASTENED DIRECTLY INTO MASONRY, CONCRETE OR OTHER STRUCTURAL SUBSTRATE MATERIAL.
5. WHERE WOOD BUCK THICKNESS IS 1-1/2" OR GREATER, BUCK SHALL BE SECURELY FASTENED TO MASONRY, CONCRETE OR OTHER STRUCTURAL SUBSTRATE. WINDOW UNITS MAY BE ANCHORED THROUGH FRAME TO SECURED WOOD BUCK IN ACCORDANCE WITH MANUFACTURER'S PUBLISHED INSTALLATION INSTRUCTIONS.
6. WHERE 1X BUCK IS NOT USED DISSIMILAR MATERIALS MUST BE SEPARATED WITH APPROVED COATING OR MEMBRANE. SELECTION OF COATING OR MEMBRANE IS THE RESPONSIBILITY OF THE ARCHITECT OR ENGINEER OF RECORD.
7. BUCKS SHALL EXTEND BEYOND WINDOW INTERIOR FACE SO THAT FULL FRAME SUPPORT IS PROVIDED.
8. SHIM AS REQUIRED AT EACH ANCHOR LOCATION WITH LOAD BEARING SHIM. SHIM WHERE SPACE OF 1/16" OR GREATER OCCURS. MAXIMUM ALLOWABLE SHIM STACK TO BE 1/4".
9. SHIMS SHALL BE LOCATED, APPLIED AND MADE FROM MATERIALS AND THICKNESS CAPABLE OF SUSTAINING APPLICABLE LOADS.
10. WIND LOAD DURATION FACTOR Cd=1.6 WAS USED FOR WOOD ANCHOR CALCULATIONS.
11. FRAME MATERIAL: EXTRUDED RIGID PVC.
12. UNITS MUST BE GLAZED PER ASTM E1300-04/09, SEE SHEET 2 FOR GLASS DETAIL.
13. APPROVED IMPACT PROTECTIVE SYSTEM IS NOT REQUIRED FOR THIS PRODUCT IN WIND BORNE DEBRIS REGIONS.
14. FOR ANCHORING INTO WOOD FRAMING OR 2X BUCK USE #10 WOOD SCREWS WITH SUFFICIENT LENGTH TO ACHIEVE A 1 3/8" MINIMUM EMBEDMENT INTO SUBSTRATE. LOCATE ANCHORS AS SHOWN IN ELEVATIONS AND INSTALLATION DETAILS.

15. FOR ANCHORING INTO MASONRY/CONCRETE USE 3/16" TAPCONS WITH SUFFICIENT LENGTH TO ACHIEVE A 1 1/2" MINIMUM EMBEDMENT INTO SUBSTRATE WITH 2" MINIMUM EDGE DISTANCE. LOCATE ANCHORS AS SHOWN IN ELEVATIONS AND INSTALLATION DETAILS.
16. FOR ANCHORING INTO METAL STRUCTURE USE #10 SMS OR SELF DRILLING SCREWS WITH SUFFICIENT LENGTH TO ACHIEVE 3 THREADS MINIMUM BEYOND STRUCTURE INTERIOR WALL. LOCATE ANCHORS AS SHOWN IN ELEVATIONS AND INSTALLATION DETAILS.
17. ALL FASTENERS TO BE CORROSION RESISTANT.
18. INSTALLATION ANCHORS SHALL BE INSTALLED IN ACCORDANCE WITH ANCHOR MANUFACTURER'S INSTALLATION INSTRUCTIONS AND ANCHORS SHALL NOT BE USED IN SUBSTRATES WITH STRENGTHS LESS THAN THE MINIMUM STRENGTH SPECIFIED BELOW:
 - A. WOOD - MINIMUM SPECIFIC GRAVITY OF G=0.42
 - B. CONCRETE - MINIMUM COMPRESSIVE STRENGTH OF 3,192 PSI.
 - C. MASONRY - STRENGTH CONFORMANCE TO ASTM C-90, GRADE N, TYPE 1 (OR GREATER).
 - D. METAL STRUCTURE: STEEL 18GA (.048") FY=33KSI/FU=52KSI OR ALUMINUM 6063-T5 FU=30KSI .048" THICK MINIMUM.

TABLE OF CONTENTS	
SHEET NO.	DESCRIPTION
1	NOTES
2	ELEVATION AND GLAZING DETAIL
3 - 4	INSTALLATION DETAILS
5	COMPONENTS

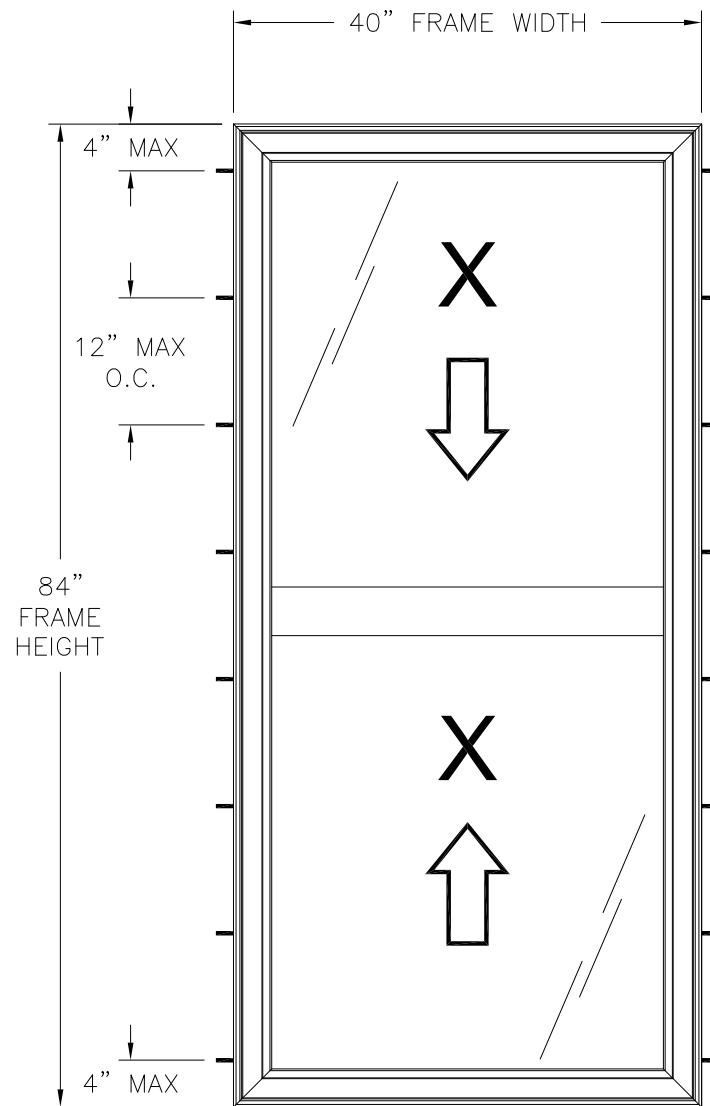
REGENCY PLUS, INC. 2000 LOCUST GAP HIGHWAY MT. CARMEL, PA 17851		
SERIES 6824 VINYL TILT DOUBLE HUNG WINDOW IMPACT 40" X 84" NOTES		
DRAWN: N.G.	DWG NO. 08-02524	REV B
SCALE NTS	DATE 11/04/14	SHEET 1 OF 5
L. ROBERTO LOMAS P.E. 1432 WOODFORD RD LEWISVILLE, NC 27023 434-688-0609 rllomas@rlomaspe.com		

SIGNED: 05/30/2019



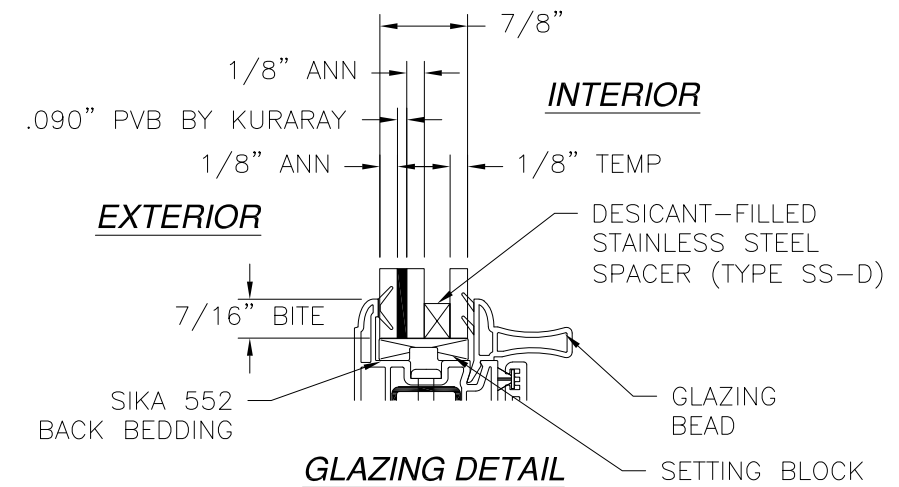
Luis R. Lomas P.E.
TX No.: 101889

REVISIONS			
REV	DESCRIPTION	DATE	APPROVED
A	REVISED COMPLIANCE	02/18/16	R.L.
B	REVISED PER NEW REQUIREMENTS	05/30/19	R.L.



NOTES:

1. PANEL SIZE: 37 3/16" X 40 15/16"
2. D.L.O.: 33 3/4" X 36 7/8"
3. 1" X 1/4" WEEP HOLES LOCATED AT SILL FACE 1 1/2" FROM EACH END.
4. 1 1/4" X 5/16" WEEP HOLE WITH PLASTIC COVER LOCATED AT EXTERIOR SILL FACE 3 1/2" FROM EACH END.



SERIES 6814 VINYL TILT DOUBLE HUNG WINDOW
EXTERIOR VIEW

DESIGN PRESSURE RATING	IMPACT RATING
±50.0PSF	LARGE AND SMALL MISSILE IMPACT

MISSILE LEVEL D, WIND ZONE 4
40" X 84" UNIT SHOWN. OTHER SIZES APPROVED AS LONG AS FRAME AREA DOES NOT EXCEED 23.33 FT²

HARDWARE SCHEDULE

A.	(2) METAL CAM-TYPE SWEEP LOCK 11 1/4" FROM EACH END INTERIOR MEETING RAIL
B.	(2) METAL KEEPER IN EXTERIOR MEETING RAIL AT LOCK POSITIONS
C.	(1) 4-COIL SPRING BALANCE SYSTEM AT EACH JAMB TRACK
D.	(1) DIE-CAST PIVOT BAR AT EACH END OF BOTTOM RAIL
E.	(1) STEEL BAR REINFORCEMENT (SFB01410) AT STILES
F.	(1) GALVANIZED STEEL TUBE (ST-226) AT RAILS

SIGNED: 05/30/2019

REGENCY PLUS, INC.

2000 LOCUST GAP HIGHWAY
MT. CARMEL, PA 17851

SERIES 6824 VINYL TILT DOUBLE HUNG WINDOW
IMPACT 40" X 84"
ELEVATION AND GLAZING DETAIL

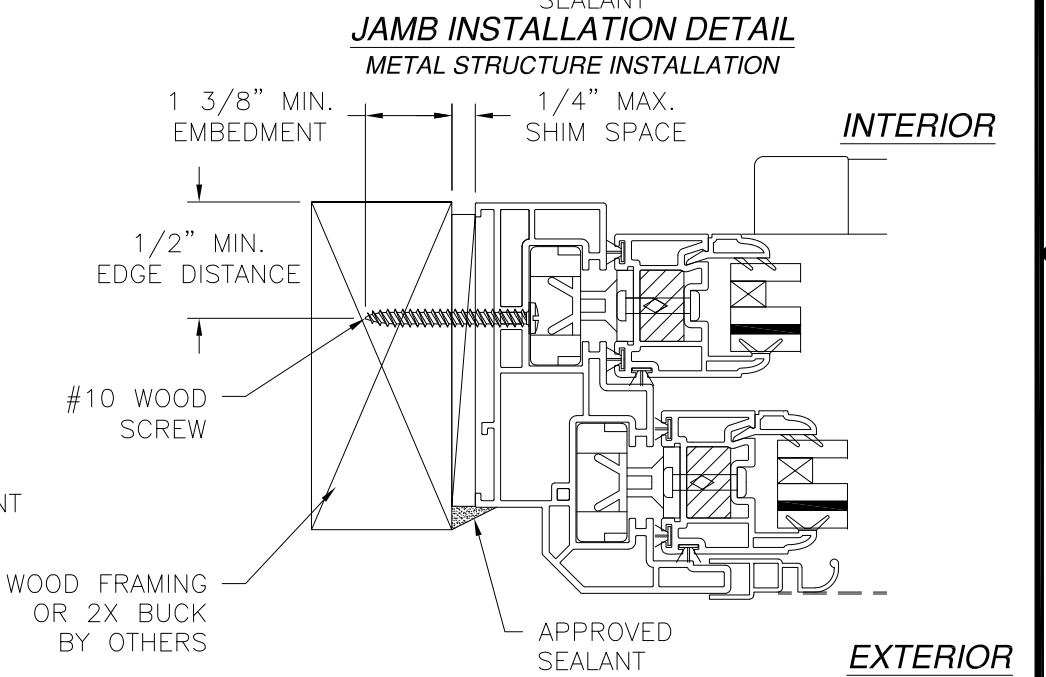
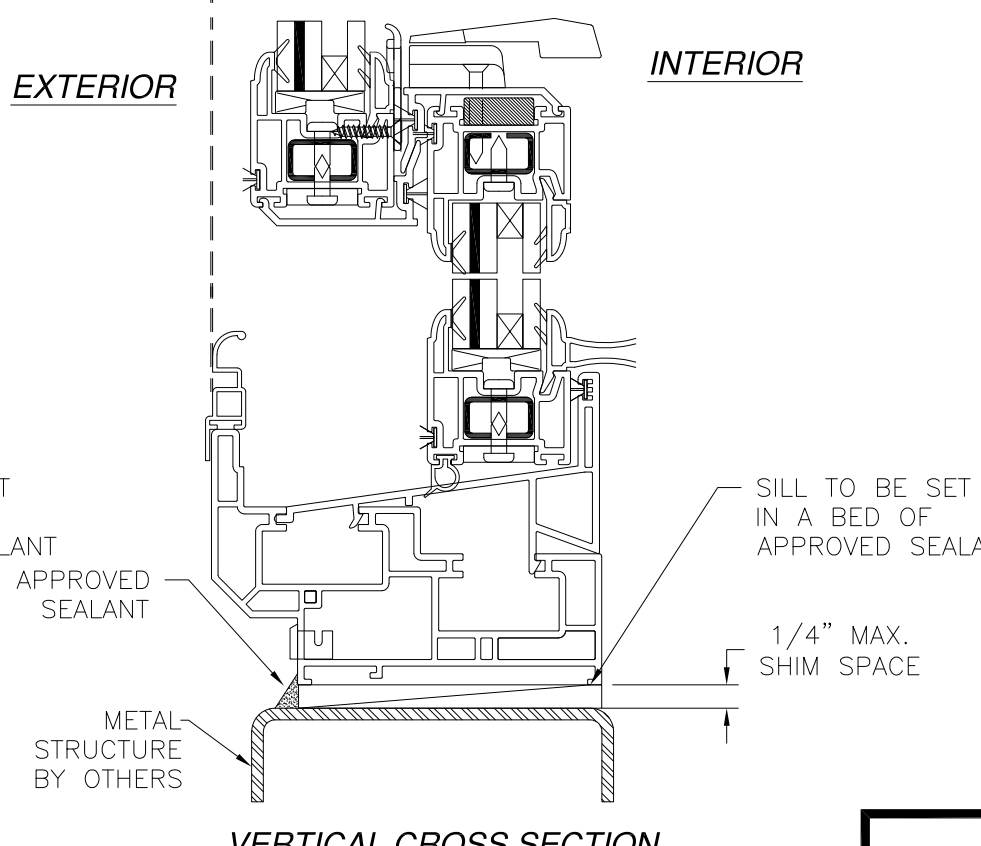
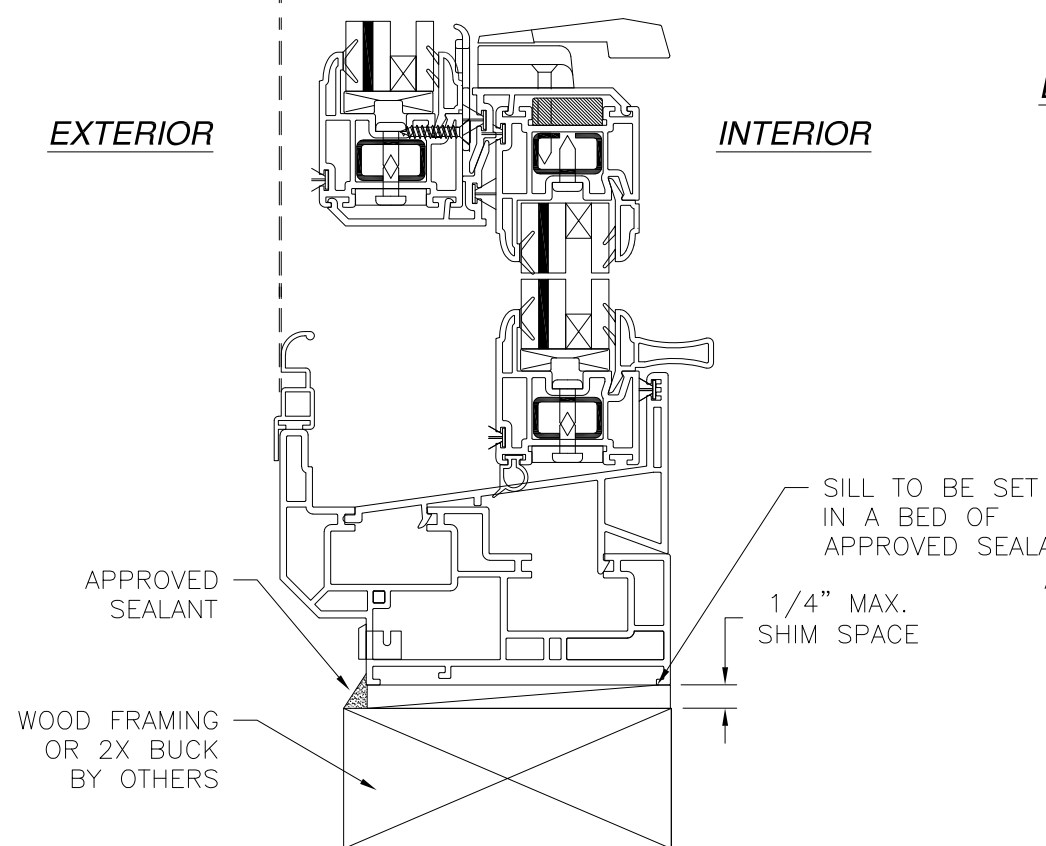
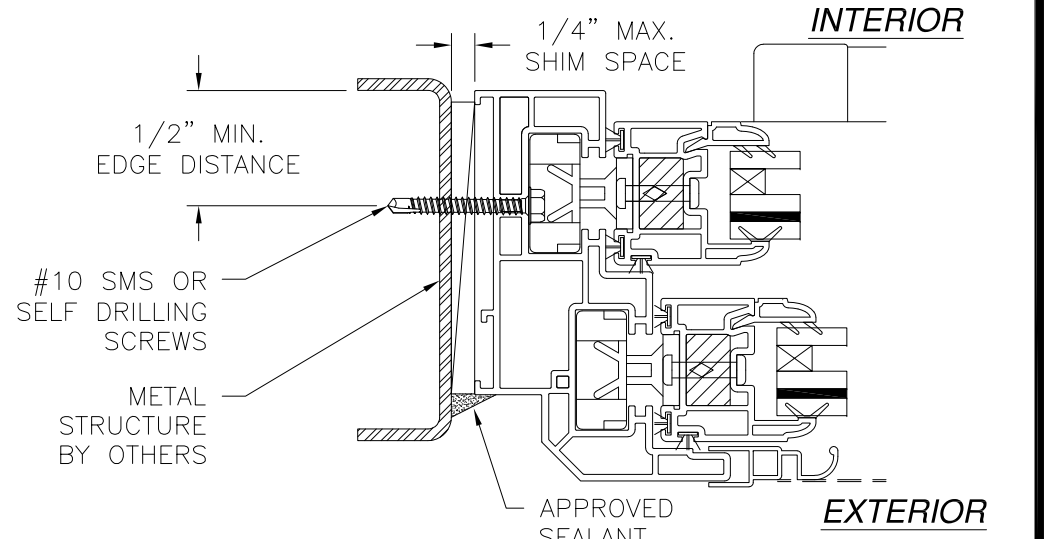
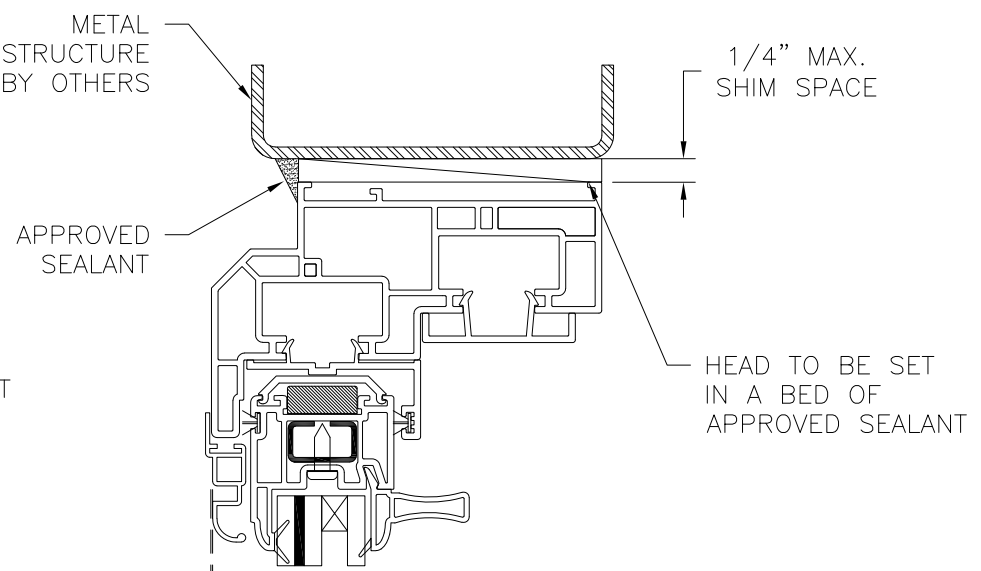
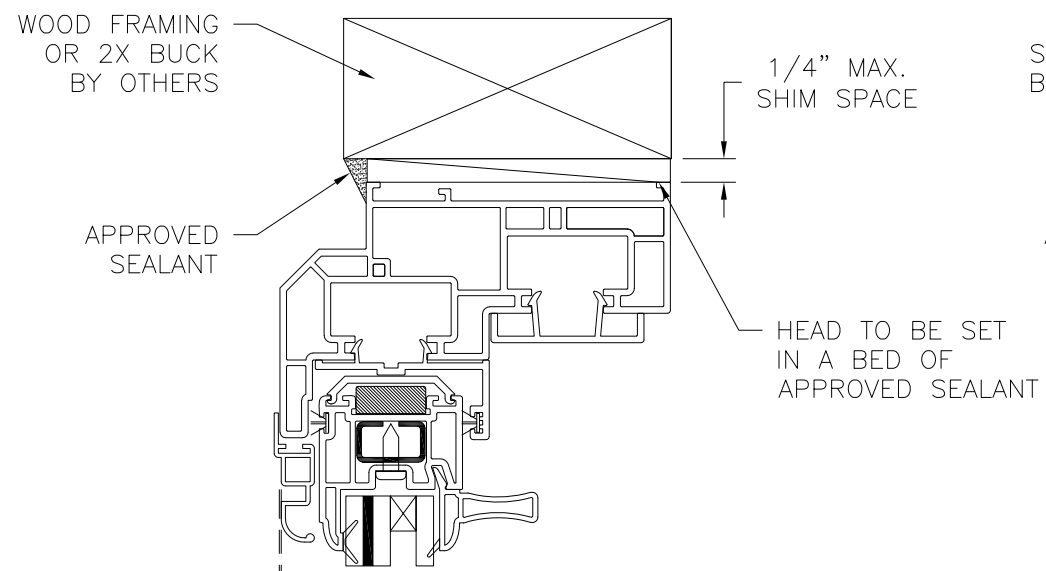
DRAWN: N.G.	DWG NO. 08-02524	REV B
SCALE NTS	DATE 11/04/14	SHEET 2 OF 5

L. ROBERTO LOMAS P.E.
1432 WOODFORD RD LEWISVILLE, NC 27023
434-688-0609 rllomas@rlomaspe.com



Luis R. Lomas P.E.
TX No.: 101889

REVISIONS			
REV	DESCRIPTION	DATE	APPROVED
A	REVISED COMPLIANCE	02/18/16	R.L.
B	REVISED PER NEW REQUIREMENTS	05/30/19	R.L.



VERTICAL CROSS SECTION
WOOD FRAMING OR 2X BUCK INSTALLATION

VERTICAL CROSS SECTION
METAL STRUCTURE INSTALLATION

JAMB INSTALLATION DETAIL
WOOD FRAMING OR 2X BUCK INSTALLATION **SIGNED: 05/30/2019**

NOTES:
 1. INTERIOR AND EXTERIOR FINISHES, BY OTHERS, NOT SHOWN FOR CLARITY.
 2. PERIMETER AND JOINT SEALANT BY OTHERS TO BE DESIGNED IN ACCORDANCE WITH ASTM E2112

REGENCY PLUS, INC.
 2000 LOCUST GAP HIGHWAY
 MT. CARMEL, PA 17851

SERIES 6824 VINYL TILT DOUBLE HUNG WINDOW
 IMPACT 40" X 84"
 INSTALLATION DETAILS

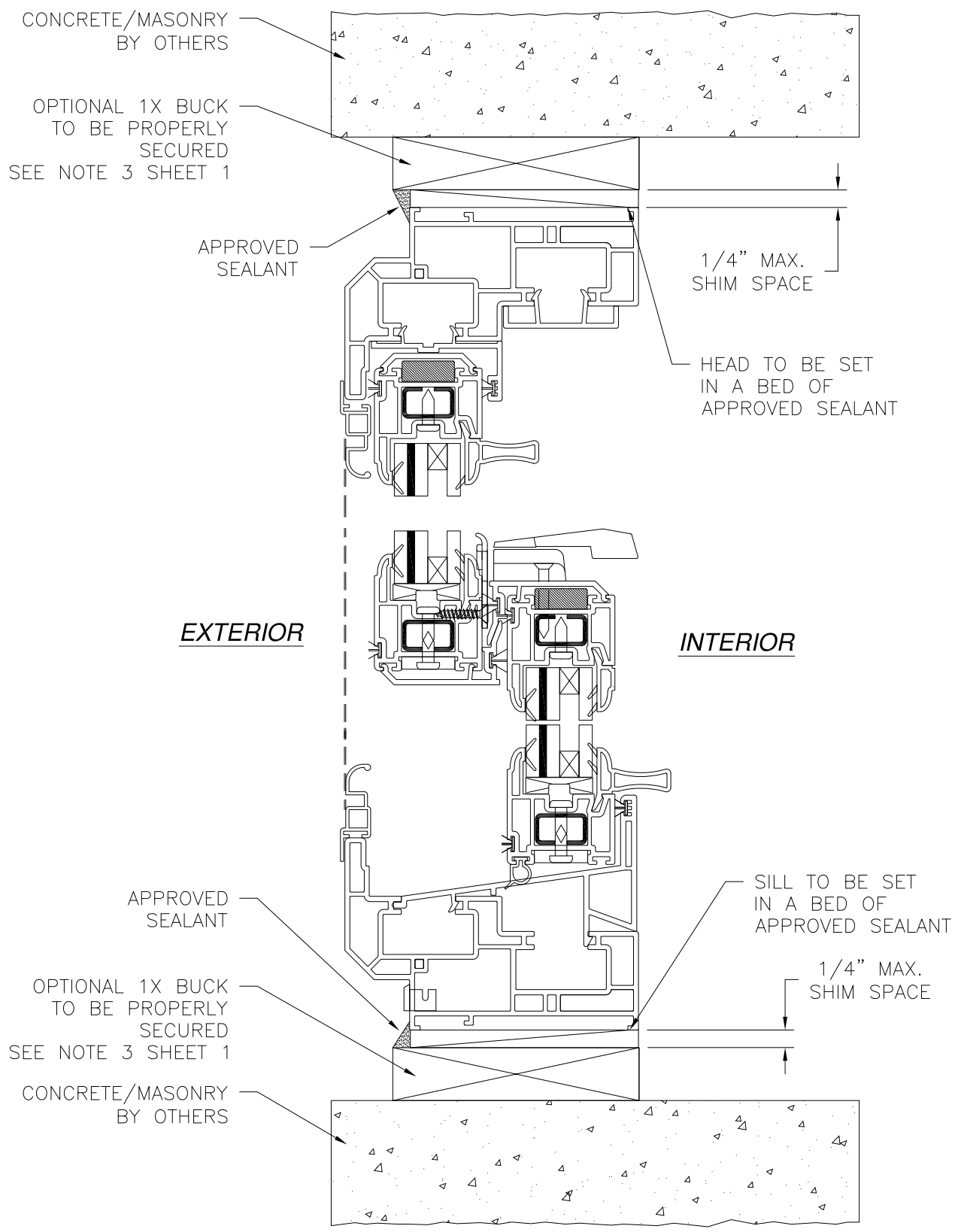
DRAWN: N.G.	DWG NO. 08-02524	REV B
SCALE NTS	DATE 11/04/14	SHEET 3 OF 5

L. ROBERTO LOMAS P.E.
 1432 WOODFORD RD LEWISVILLE, NC 27023
 434-688-0609 rllomas@rlomaspe.com

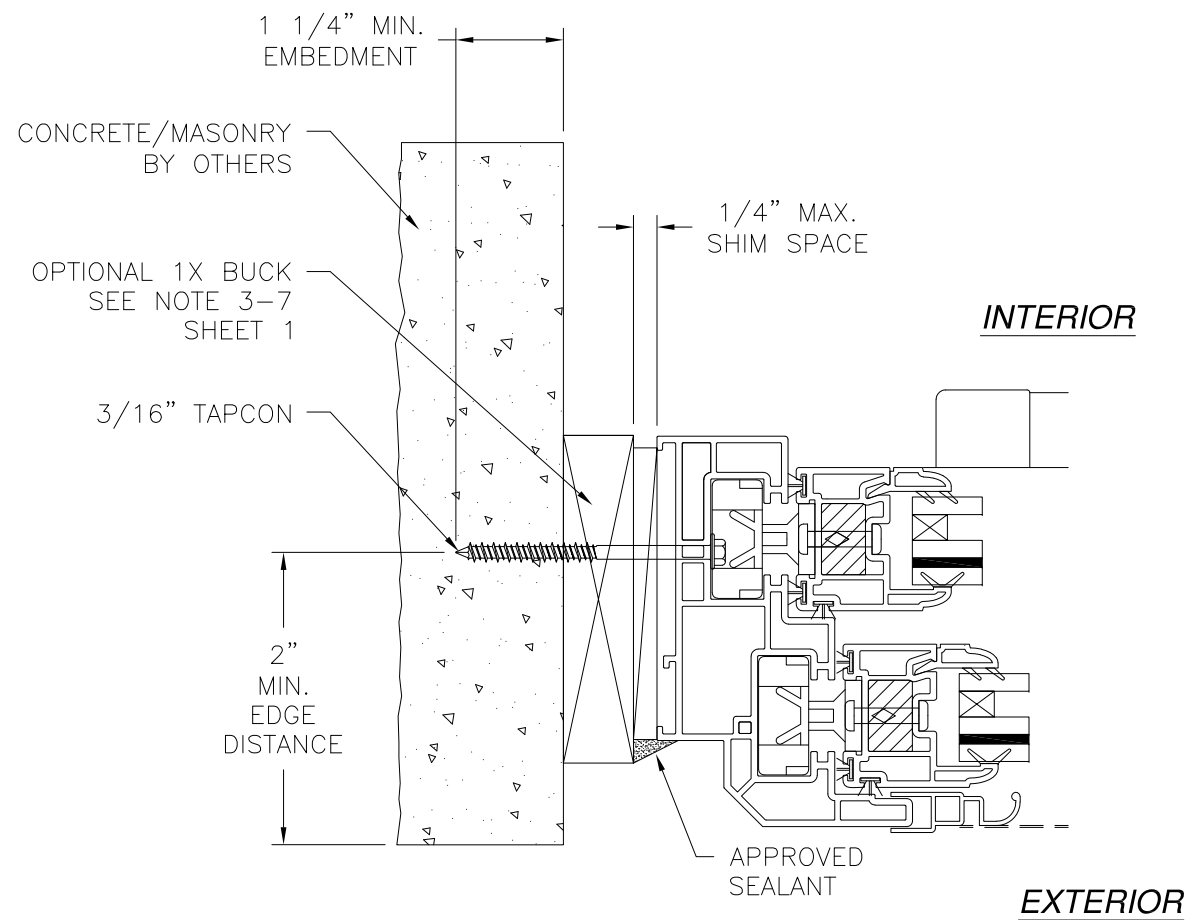


Luis R. Lomas P.E.
 TX No.: 101889

REVISIONS			
REV	DESCRIPTION	DATE	APPROVED
A	REVISED COMPLIANCE	02/18/16	R.L.
B	REVISED PER NEW REQUIREMENTS	05/30/19	R.L.



VERTICAL CROSS SECTION
CONCRETE/MASONRY INSTALLATION



JAMB INSTALLATION DETAIL
CONCRETE/MASONRY INSTALLATION

- NOTES:**
1. INTERIOR AND EXTERIOR FINISHES, BY OTHERS, NOT SHOWN FOR CLARITY.
 2. PERIMETER AND JOINT SEALANT BY OTHERS TO BE DESIGNED IN ACCORDANCE WITH ASTM E2112

SIGNED: 05/30/2019

REGENCY PLUS, INC.
2000 LOCUST GAP HIGHWAY
MT. CARMEL, PA 17851

SERIES 6824 VINYL TILT DOUBLE HUNG WINDOW
IMPACT 40" X 84"
INSTALLATION DETAILS

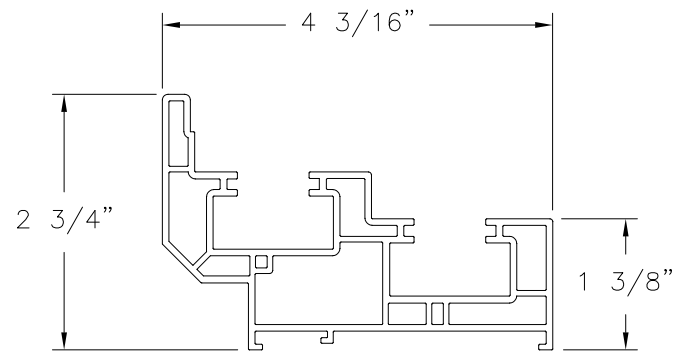
DRAWN: N.G.	DWG NO. 08-02524	REV B
SCALE NTS	DATE 11/04/14	SHEET 4 OF 5

L. ROBERTO LOMAS P.E.
1432 WOODFORD RD LEWISVILLE, NC 27023
434-688-0609 rllomas@rlomaspe.com

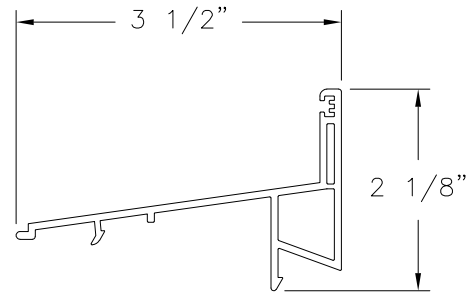


Luis R. Lomas P.E.
TX No.: 101889

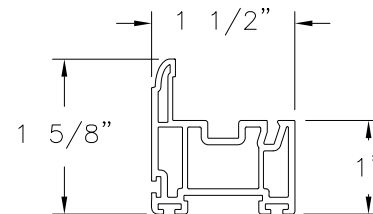
REVISIONS			
REV	DESCRIPTION	DATE	APPROVED
A	REVISED COMPLIANCE	02/18/16	R.L.
B	REVISED PER NEW REQUIREMENTS	05/30/19	R.L.



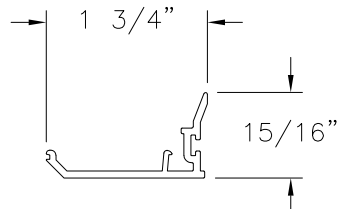
MAIN FRAME
RIGID PVC (1060)



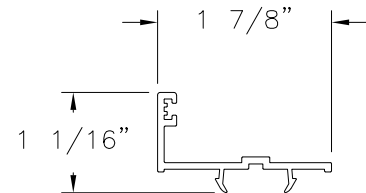
SLOPED SILL COVER
RIGID PVC (1181)



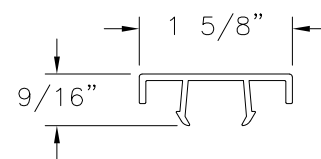
SASH PROFILE
RIGID/FLEXIBLE PVC (1282)



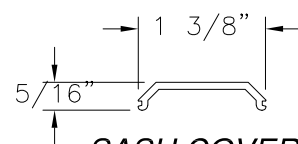
INTERLOCK COVER
RIGID PVC (1180)



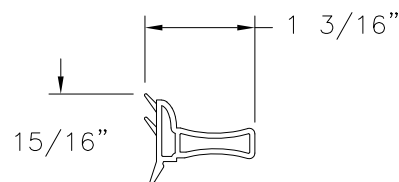
POCKET COVER
RIGID PVC (1073)



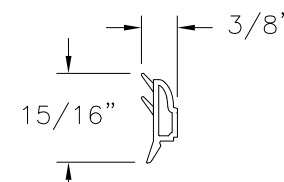
**PANEL STOP/
FRAME COVER**
RIGID PVC (1070)



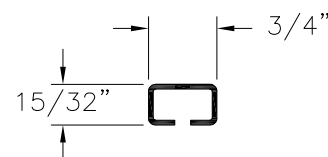
SASH COVER
RIGID PVC (1078)



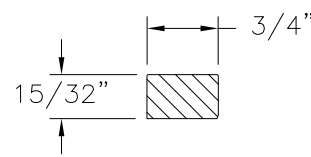
GLAZING STOP
RIGID PVC (X0033)



GLAZING STOP
RIGID PVC (X0035)



RAILS REINFORCEMENT
GALVANIZED STEEL, .060" THICKNESS (ST-226)



STILE BAR REINFORCEMENT
STEEL (SFB01410)

SIGNED: 05/30/2019

REGENCY PLUS, INC.

2000 LOCUST GAP HIGHWAY
MT. CARMEL, PA 17851

SERIES 6824 VINYL TILT DOUBLE HUNG WINDOW
IMPACT 40" X 84"
COMPONENTS

DRAWN: N.G.	DWG NO. 08-02524	REV B
SCALE NTS	DATE 11/04/14	SHEET 5 OF 5

L. ROBERTO LOMAS P.E.
1432 WOODFORD RD LEWISVILLE, NC 27023
434-688-0609 rllomas@rlomaspe.com



Luis R. Lomas P.E.
TX No.: 101889