

REVISIONS			
REV	DESCRIPTION	DATE	APPROVED

NOTES:

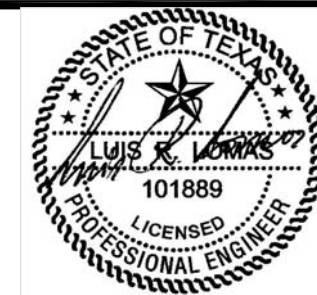
1. THE PRODUCT SHOWN HEREIN IS DESIGNED AND MANUFACTURED TO COMPLY WITH REQUIREMENTS OF THE 2006 IBC AND THE 2006 IRC WITH STATE OF TEXAS MODIFICATIONS AND WITH THE 2009 IBC, 2009 IRC, 2012 IBC AND 2012 IRC.
2. WOOD FRAMING AND MASONRY OPENING TO BE DESIGNED AND ANCHORED TO PROPERLY TRANSFER ALL LOADS TO STRUCTURE. FRAMING AND MASONRY OPENING IS THE RESPONSIBILITY OF THE ARCHITECT OR ENGINEER OF RECORD.
3. 1X BUCK OVER MASONRY/CONCRETE IS OPTIONAL. WHERE 1X BUCK IS NOT USED DISSIMILAR MATERIALS MUST BE SEPARATED WITH APPROVED COATING OR MEMBRANE. SELECTION OF COATING OR MEMBRANE IS THE RESPONSIBILITY OF THE ARCHITECT OR ENGINEER OF RECORD.
4. ALLOWABLE STRESS INCREASE OF 1/3 WAS NOT USED IN THE DESIGN OF THE PRODUCT SHOWN HEREIN. WIND LOAD DURATION FACTOR Cd=1.6 WAS USED FOR WOOD ANCHOR CALCULATIONS.
5. FRAME MATERIAL: EXTRUDED RIGID PVC.
6. UNITS MUST BE GLAZED PER ASTM E1300-04/09, SEE SHEET 2 FOR GLASS DETAILS.
7. APPROVED IMPACT PROTECTIVE SYSTEM IS NOT REQUIRED FOR THIS PRODUCT IN WIND BORNE DEBRIS REGIONS.
8. SHIM AS REQUIRED AT EACH INSTALLATION ANCHOR WITH LOAD BEARING SHIM. SHIM WHERE SPACE OF 1/16" OR GREATER OCCURS. MAXIMUM ALLOWABLE SHIM STACK TO BE 1/4".
9. FOR ANCHORING THROUGH FIN INTO WOOD FRAMING OR 2X BUCK USE #8 WOOD SCREWS WITH SUFFICIENT LENGTH TO ACHIEVE A 1 1/4" MINIMUM EMBEDMENT INTO SUBSTRATE. LOCATE ANCHORS AS SHOWN IN ELEVATIONS AND INSTALLATION DETAILS.
10. FOR ANCHORING THROUGH FIN INTO WOOD FRAMING OR 2X BUCK USE 6D COMMON NAILS WITH SUFFICIENT LENGTH TO ACHIEVE A 1 1/2" MINIMUM EMBEDMENT INTO SUBSTRATE.  
LOCATE ANCHORS AS SHOWN IN ELEVATIONS AND INSTALLATION DETAILS.
11. FOR ANCHORING THROUGH FRAME INTO WOOD FRAMING OR 2X BUCK USE #10 WOOD SCREWS WITH SUFFICIENT LENGTH TO ACHIEVE A 1 1/4" MINIMUM EMBEDMENT INTO SUBSTRATE. LOCATE ANCHORS AS SHOWN IN ELEVATIONS AND INSTALLATION DETAILS.
12. FOR ANCHORING THROUGH FRAME INTO MASONRY/CONCRETE USE 3/16" TAPCONS WITH SUFFICIENT LENGTH TO ACHIEVE A 1 1/4" MINIMUM EMBEDMENT INTO SUBSTRATE WITH 2 1/2" MINIMUM EDGE DISTANCE. LOCATE ANCHORS AS SHOWN IN ELEVATIONS AND INSTALLATION DETAILS.

13. FOR ANCHORING INTO THROUGH FRAME METAL STRUCTURE USE #10 SMS OR SELF DRILLING SCREWS WITH SUFFICIENT LENGTH TO ACHIEVE 3 THREADS MINIMUM BEYOND STRUCTURE INTERIOR WALL. LOCATE ANCHORS AS SHOWN IN ELEVATIONS AND INSTALLATION DETAILS.
14. ALL FASTENERS TO BE CORROSION RESISTANT.
15. INSTALLATION ANCHORS SHALL BE INSTALLED IN ACCORDANCE WITH ANCHOR MANUFACTURER'S INSTALLATION INSTRUCTIONS AND ANCHORS SHALL NOT BE USED IN SUBSTRATES WITH STRENGTHS LESS THAN THE MINIMUM STRENGTH SPECIFIED BELOW:
  - A. WOOD – MINIMUM SPECIFIC GRAVITY OF G=0.42
  - B. CONCRETE – MINIMUM COMPRESSIVE STRENGTH OF 3,192 PSI.
  - C. MASONRY – STRENGTH CONFORMANCE TO ASTM C-90, GRADE N, TYPE 1 (OR GREATER).
  - D. METAL STRUCTURE: STEEL 18GA, 33KSI OR ALUMINUM 6063-T5 .048" THICK MINIMUM

SIGNED: 05/02/2017

TABLE OF CONTENTS	
SHEET NO.	DESCRIPTION
1	NOTES
2	ELEVATIONS
3 - 7	INSTALLATION DETAILS

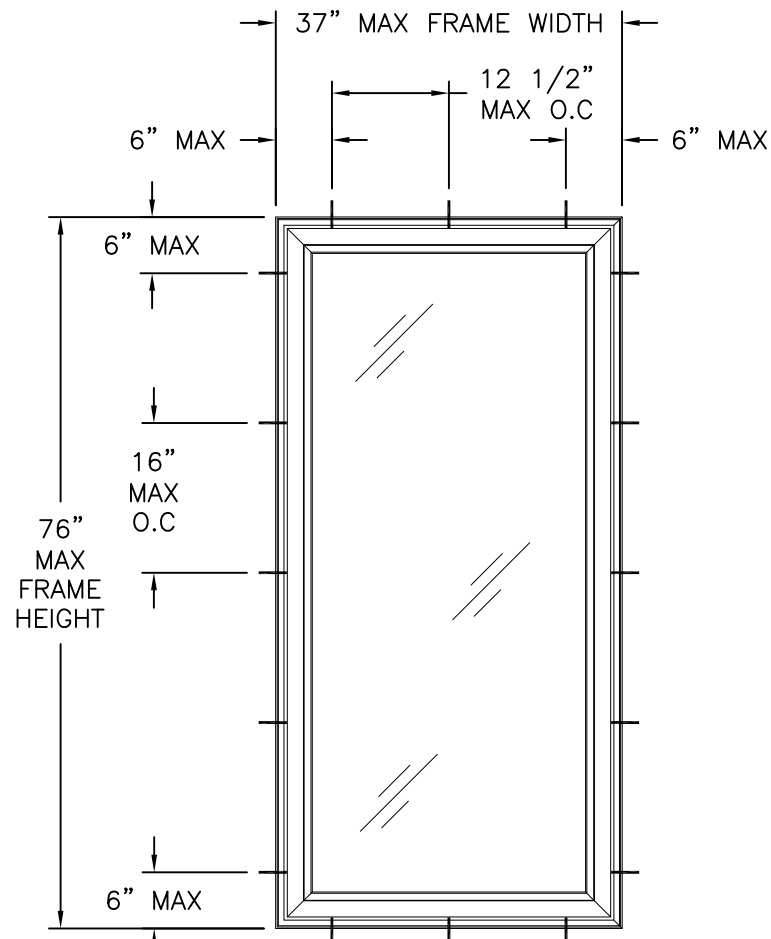
EARTHWISE GROUP LLC, MANUFACTURED BY: SHOWCASE CUSTOM VINYL WINDOWS AND DOORS 1702 CULLEN, BLVD. HOUSTON, TX 77023		
MODEL 143.191 CA REP/NC VINYL CASEMENT WINDOW, IMPACT 37" X 76" NOTES		
DRAWN: A.R.	DWG NO. 08-03103	REV -
SCALE NTS	DATE 05/01/17	SHEET 1 OF 7
L. ROBERTO LOMAS P.E. 1432 WOODFORD RD LEWISVILLE, NC 27023 434-688-0609 rllomas@rlomaspe.com		



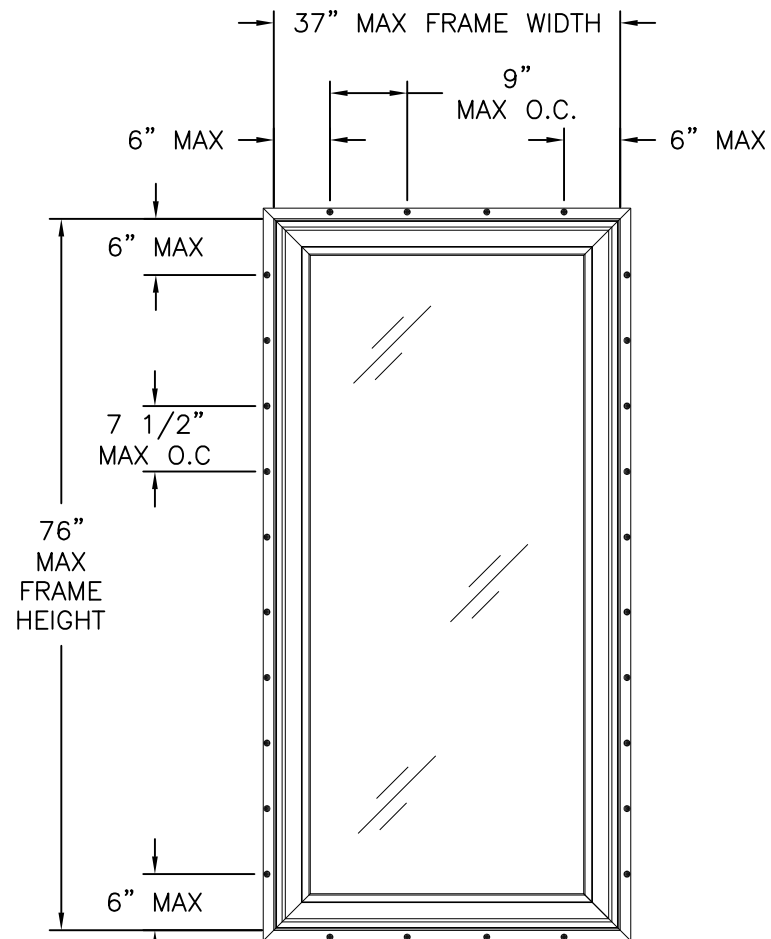
Luis R. Lomas P.E.  
TX No.: 101889

REVISIONS			
REV	DESCRIPTION	DATE	APPROVED

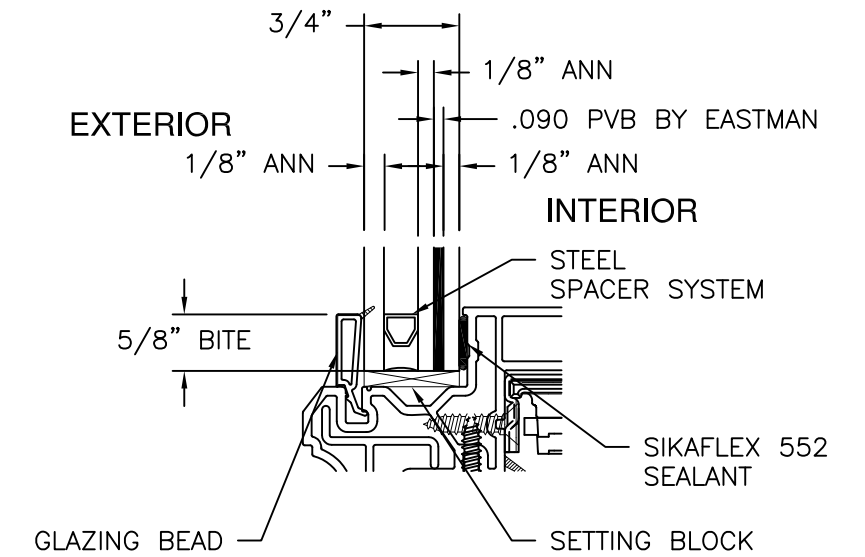
- NOTES:  
 1. MAXIMUM SASH SIZE: 35 3/8" x 73 1/8"  
 2. MAXIMUM D.L.O.: 32 1/16" x 71 1/16"



**MODEL 143.191 CA REP VINYL CASEMENT WINDOW**  
 EXTERIOR VIEW  
 FRAME INSTALLATION



**MODEL 143.191 CA NC VINYL CASEMENT WINDOW**  
 EXTERIOR VIEW  
 FIN INSTALLATION



**GLAZING DETAIL**

DESIGN PRESSURE RATING	IMPACT RATING
±50.0PSF	LARGE AND SMALL MISSILE IMPACT

MISSILE LEVEL D, WIND ZONE 4

SIGNED: 05/02/2017

EARTHWISE GROUP LLC, MANUFACTURED BY:  
 SHOWCASE CUSTOM VINYL WINDOWS AND DOORS  
 1702 CULLEN, BLVD. HOUSTON, TX 77023

MODEL 143.191 CA REP/NC  
 VINYL CASEMENT WINDOW, IMPACT 37" X 76"  
 ELEVATIONS

DRAWN: A.R.	DWG NO. 08-03103	REV -
SCALE NTS	DATE 05/01/17	SHEET 2 OF 7

L. ROBERTO LOMAS P.E.  
 1432 WOODFORD RD LEWISVILLE, NC 27023  
 434-688-0609 rllomas@rlomaspe.com

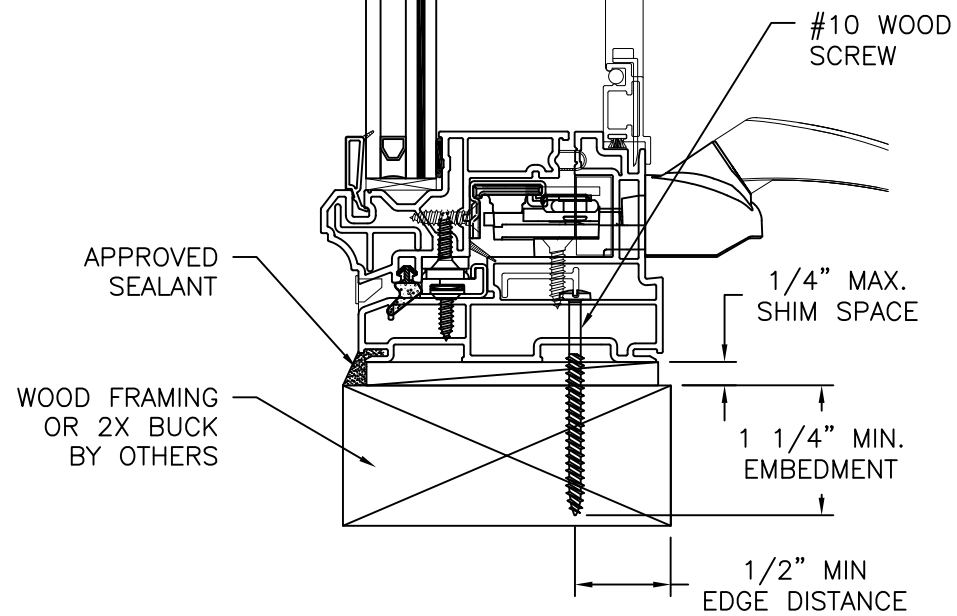
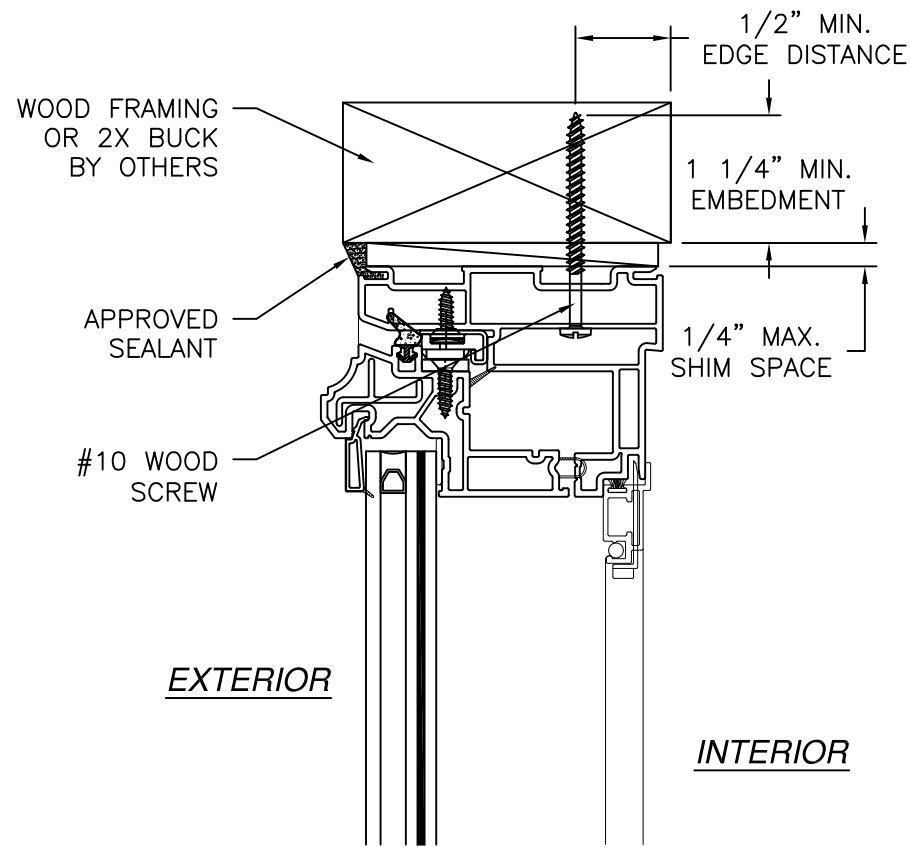


Luis R. Lomas P.E.  
 TX No.: 101889

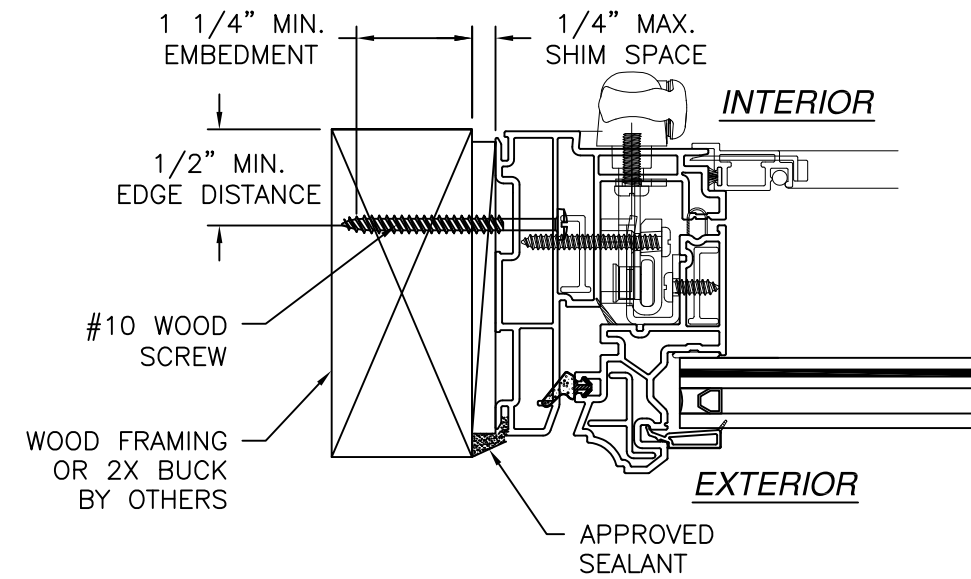
**HARDWARE SCHEDULE**

A.	(1) MAXIM HINGED DUAL ARM OPERATOR AT 9" FROM CORNER OF FRAME SILL
B.	(1) MAXIM MULTI-POINT LOCK BAR WITH KEEPERS AT 9" FROM CORNER OF FRAME LOCK JAMB
C.	(4) KEEPER LOCKING POINT ON SASH LOCK STILE AT 4", 24", 45" & 65" FROM SASH BOTTOM RAIL
D.	(4) LONG ALUMINUM IMPACT SNUBBERS AT 14", 29", 45" & 60" ON FRAME HINGE JAMB
E.	(1) EXTRUDED ALUMINUM REINFORCEMENT (10500006-A) AT EXTERIOR LEG OF SASH STILES AND RAILS
F.	(2) EXTRUDED ALUMINUM REINFORCEMENT (10300091) AT INTERIOR LEG OF SASH STILES AND EACH FRAME JAMB

REVISIONS			
REV	DESCRIPTION	DATE	APPROVED



**VERTICAL CROSS SECTION**  
WOOD FRAMING OR 2X BUCK INSTALLATION



**JAMB INSTALLATION DETAIL**  
WOOD FRAMING OR 2X BUCK INSTALLATION

**NOTES:**

1. INTERIOR AND EXTERIOR FINISHES, BY OTHERS, NOT SHOWN FOR CLARITY.
2. PERIMETER AND JOINT SEALANT BY OTHERS TO BE DESIGNED IN ACCORDANCE WITH ASTM E2112

SIGNED: 05/02/2017

**EARTHWISE GROUP LLC, MANUFACTURED BY:**  
SHOWCASE CUSTOM VINYL WINDOWS AND DOORS  
1702 CULLEN, BLVD. HOUSTON, TX 77023

MODEL 143.191 CA REP/NC  
VINYL CASEMENT WINDOW, IMPACT 37" X 76"  
INSTALLATION DETAILS

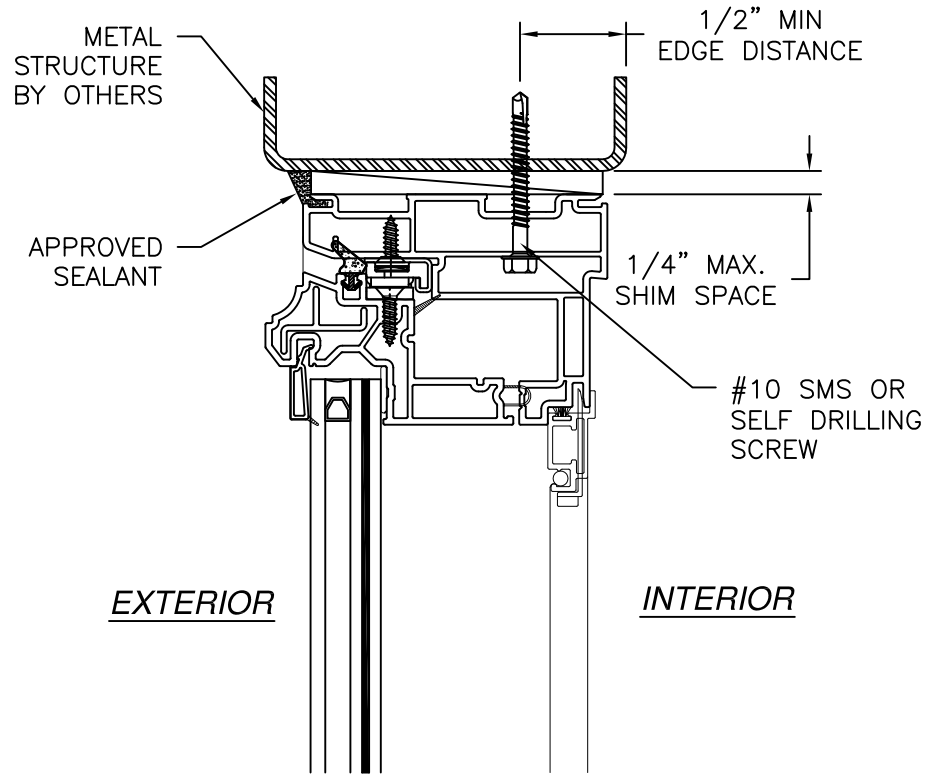
DRAWN: A.R.	DWG NO. 08-03103	REV -
SCALE NTS	DATE 05/01/17	SHEET 3 OF 7

L. ROBERTO LOMAS P.E.  
1432 WOODFORD RD LEWISVILLE, NC 27023  
434-688-0609 rllomas@rlomaspe.com



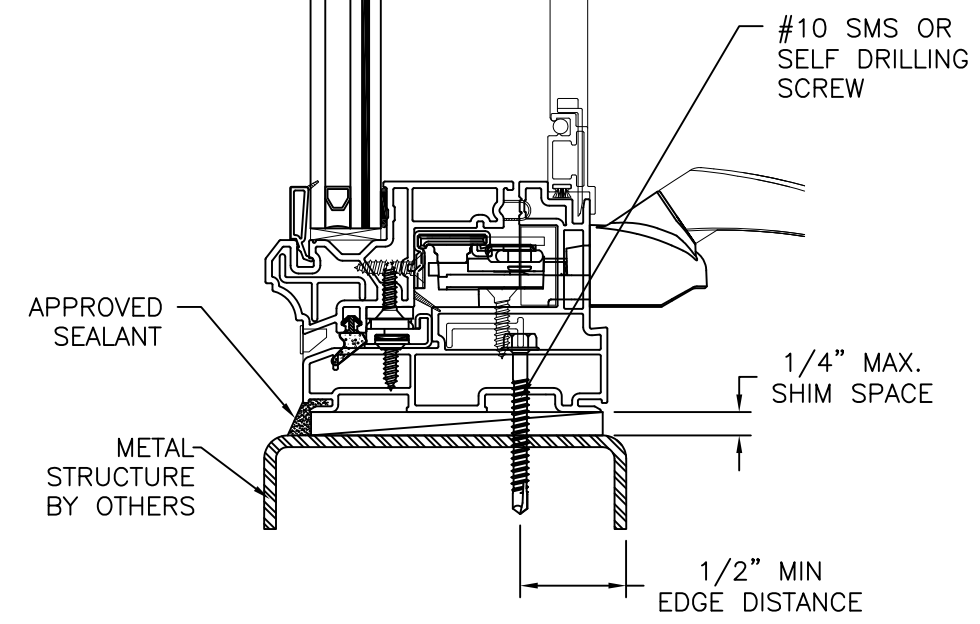
Luis R. Lomas P.E.  
TX No.: 101889

REVISIONS			
REV	DESCRIPTION	DATE	APPROVED

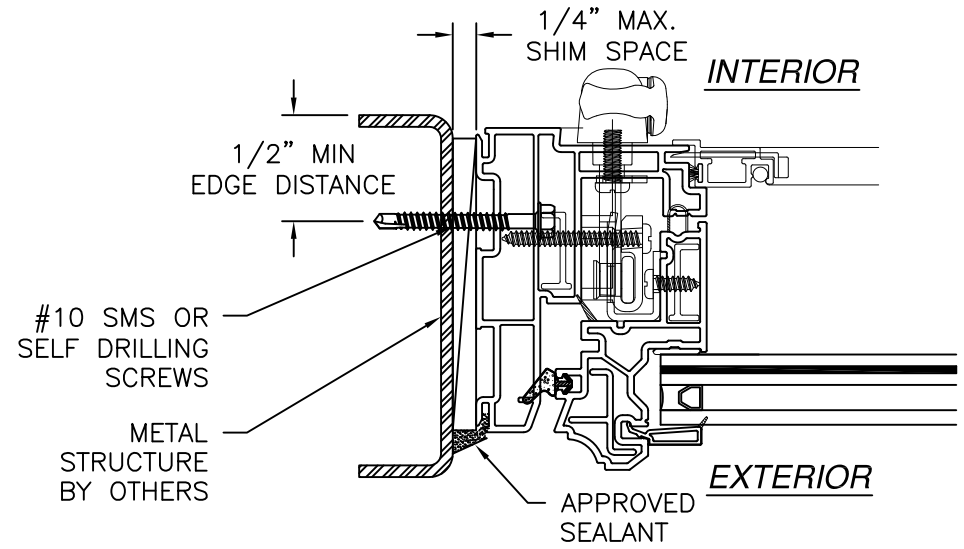


EXTERIOR

INTERIOR



**VERTICAL CROSS SECTION**  
METAL STRUCTURE INSTALLATION



**JAMB INSTALLATION DETAIL**  
METAL STRUCTURE INSTALLATION

- NOTES:
1. INTERIOR AND EXTERIOR FINISHES, BY OTHERS, NOT SHOWN FOR CLARITY.
  2. PERIMETER AND JOINT SEALANT BY OTHERS TO BE DESIGNED IN ACCORDANCE WITH ASTM E2112

SIGNED: 05/02/2017

EARTHWISE GROUP LLC, MANUFACTURED BY:  
SHOWCASE CUSTOM VINYL WINDOWS AND DOORS  
1702 CULLEN, BLVD. HOUSTON, TX 77023

MODEL 143.191 CA REP/NC  
VINYL CASEMENT WINDOW, IMPACT 37" X 76"  
INSTALLATION DETAILS

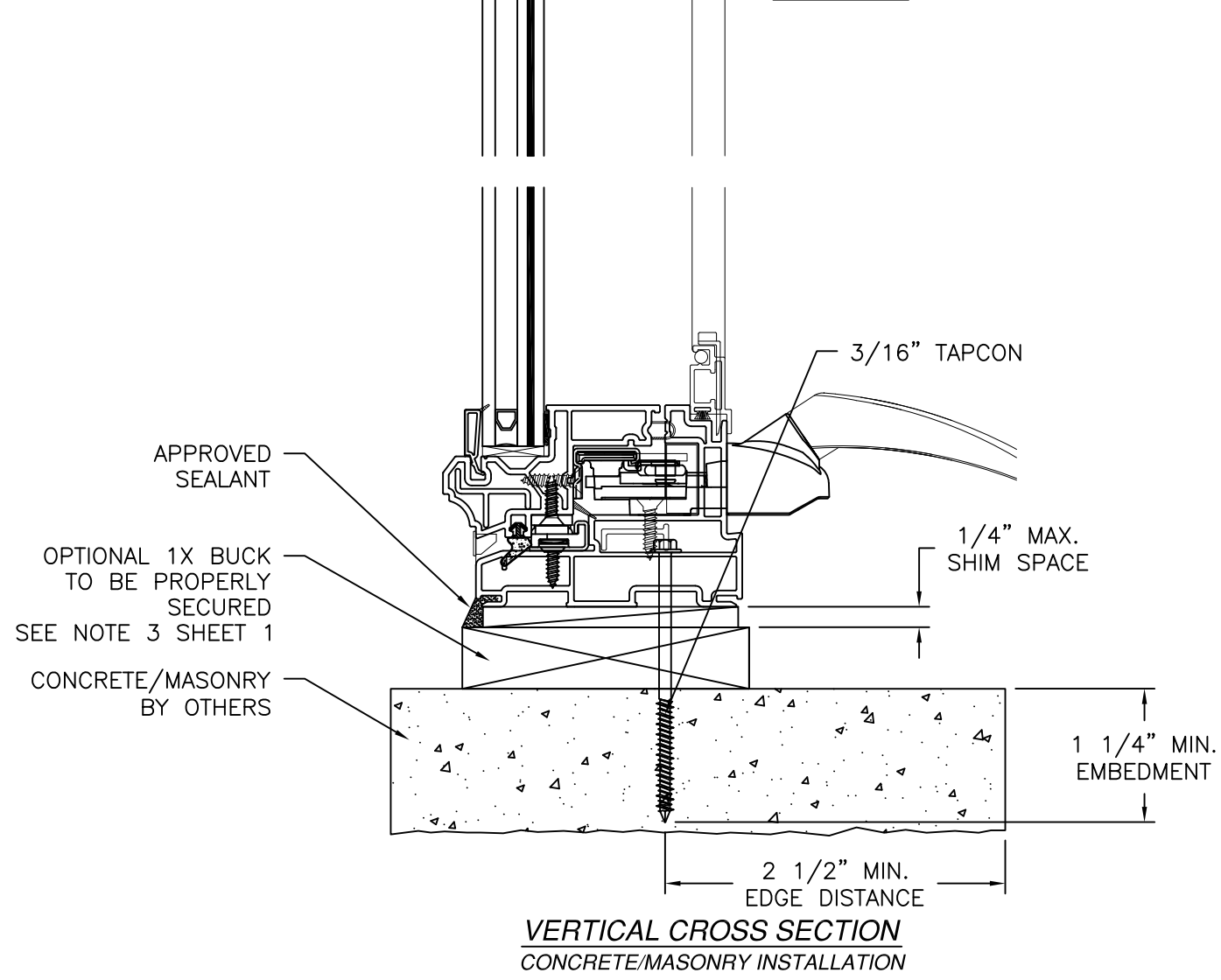
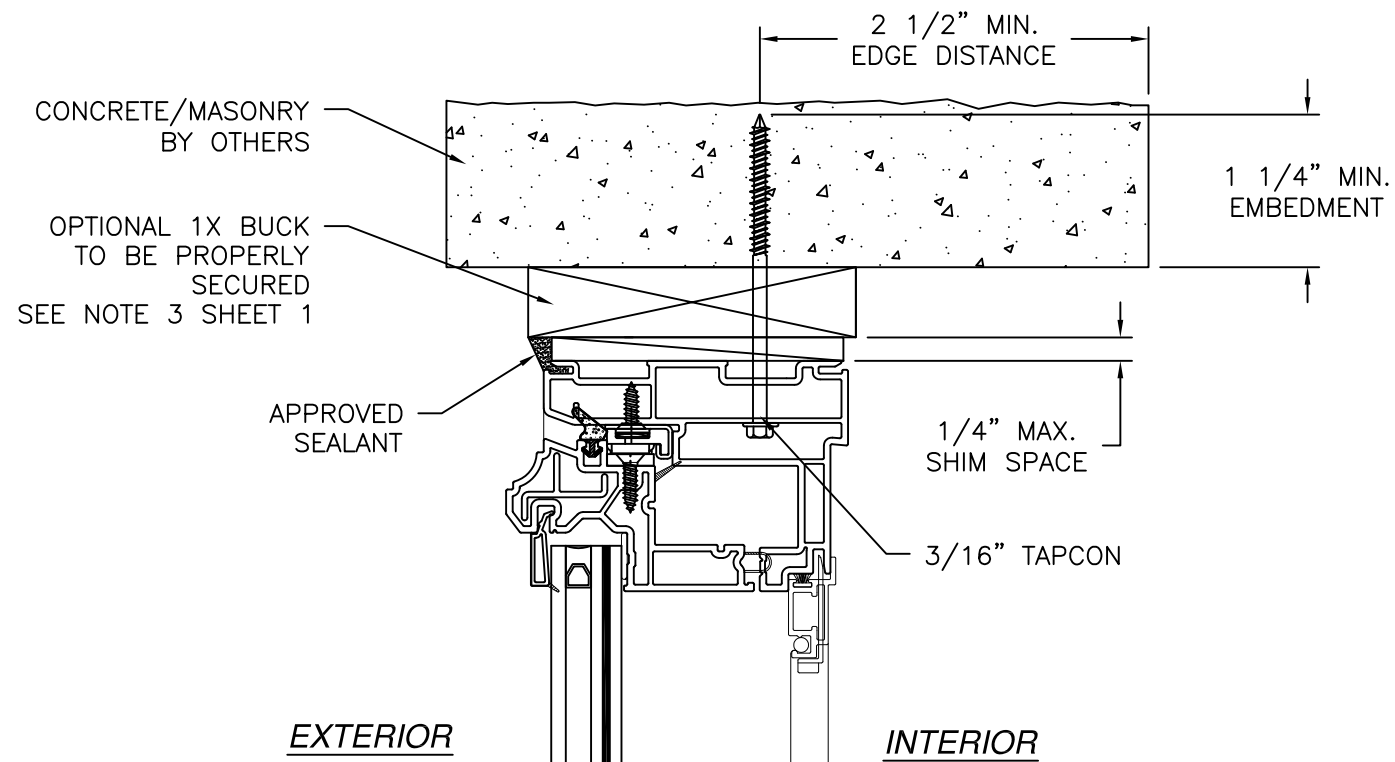
DRAWN: A.R.	DWG NO. 08-03103	REV -
SCALE NTS	DATE 05/01/17	SHEET 4 OF 7

L. ROBERTO LOMAS P.E.  
1432 WOODFORD RD LEWISVILLE, NC 27023  
434-688-0609 rllomas@rlomaspe.com

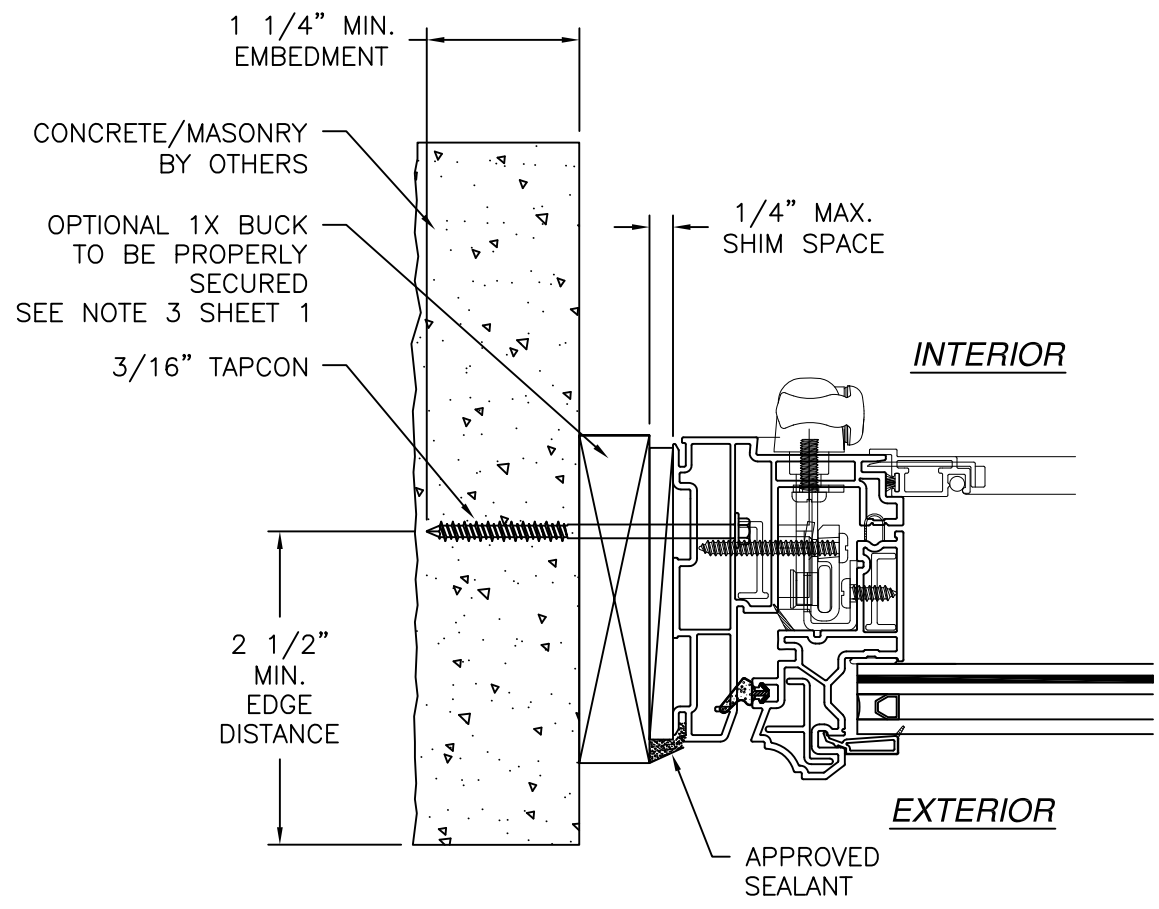


Luis R. Lomas P.E.  
TX No.: 101889

REVISIONS			
REV	DESCRIPTION	DATE	APPROVED



**VERTICAL CROSS SECTION**  
CONCRETE/MASONRY INSTALLATION



**JAMB INSTALLATION DETAIL**  
CONCRETE/MASONRY INSTALLATION

- NOTES:
1. INTERIOR AND EXTERIOR FINISHES, BY OTHERS, NOT SHOWN FOR CLARITY.
  2. PERIMETER AND JOINT SEALANT BY OTHERS TO BE DESIGNED IN ACCORDANCE WITH ASTM E2112

SIGNED: 05/02/2017

**EARTHWISE GROUP LLC, MANUFACTURED BY:**  
SHOWCASE CUSTOM VINYL WINDOWS AND DOORS  
1702 CULLEN, BLVD. HOUSTON, TX 77023

MODEL 143.191 CA REP/NC  
VINYL CASEMENT WINDOW, IMPACT 37" X 76"  
INSTALLATION DETAILS

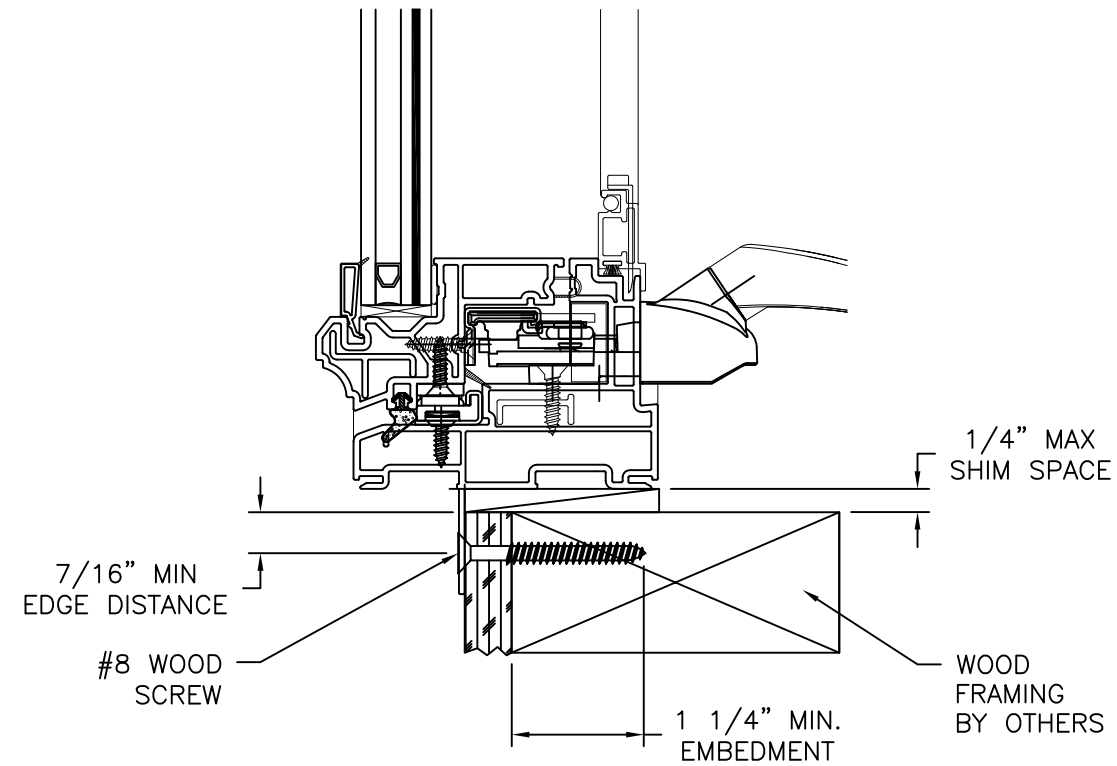
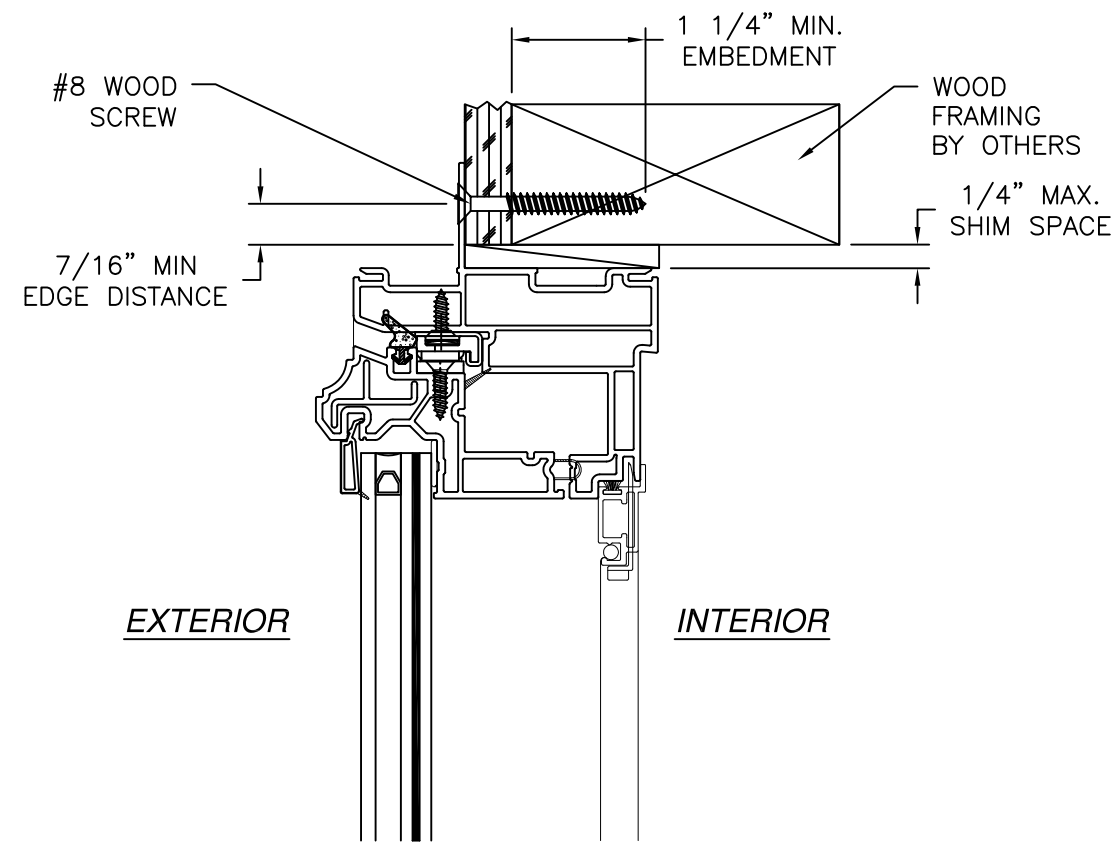
DRAWN: A.R.	DWG NO. 08-03103	REV -
SCALE NTS	DATE 05/01/17	SHEET 5 OF 7

L. ROBERTO LOMAS P.E.  
1432 WOODFORD RD LEWISVILLE, NC 27023  
434-688-0609 rllomas@rlomaspe.com

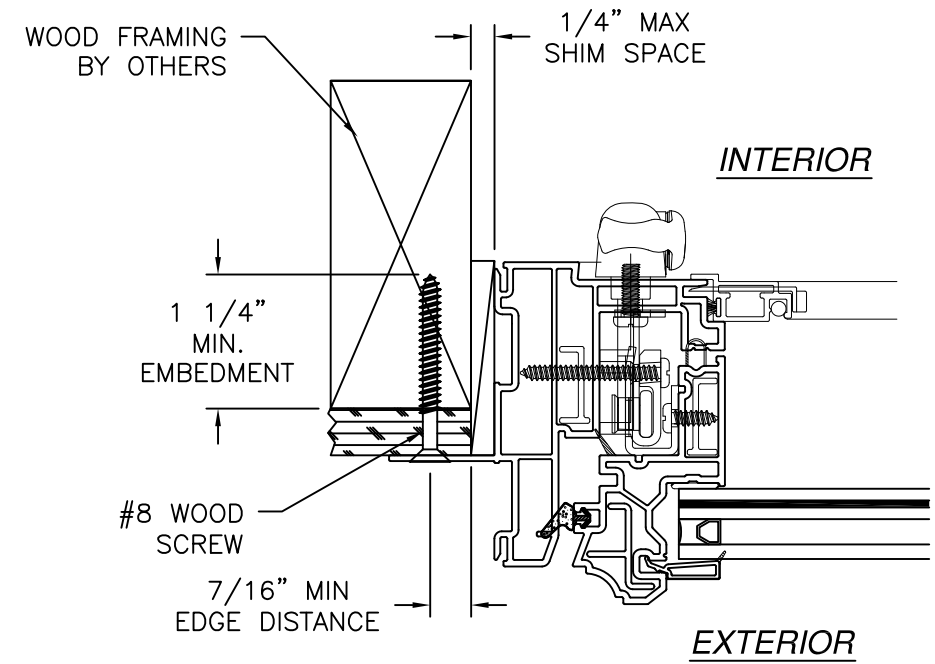


Luis R. Lomas P.E.  
TX No.: 101889

REVISIONS			
REV	DESCRIPTION	DATE	APPROVED



**VERTICAL CROSS SECTION**  
WOOD FRAMING OR 2X BUCK INSTALLATION



**JAMB INSTALLATION DETAIL**  
WOOD FRAMING OR 2X BUCK INSTALLATION

**NOTES:**

1. INTERIOR AND EXTERIOR FINISHES, BY OTHERS, NOT SHOWN FOR CLARITY.
2. PERIMETER AND JOINT SEALANT BY OTHERS TO BE DESIGNED IN ACCORDANCE WITH ASTM E2112

SIGNED: 05/02/2017

**EARTHWISE GROUP LLC, MANUFACTURED BY:**  
SHOWCASE CUSTOM VINYL WINDOWS AND DOORS  
1702 CULLEN, BLVD. HOUSTON, TX 77023

MODEL 143.191 CA REP/NC  
VINYL CASEMENT WINDOW, IMPACT 37" X 76"  
INSTALLATION DETAILS

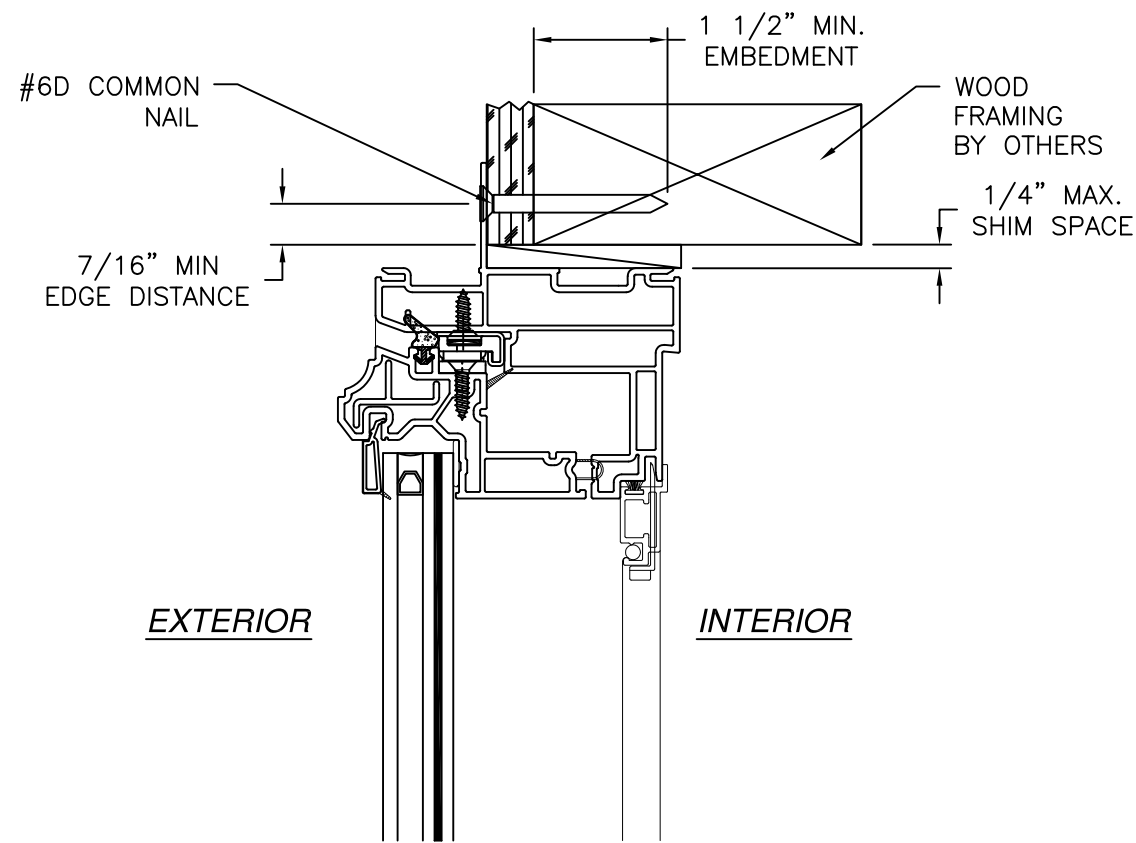
DRAWN: A.R.	DWG NO. 08-03103	REV -
SCALE NTS	DATE 05/01/17	SHEET 6 OF 7

L. ROBERTO LOMAS P.E.  
1432 WOODFORD RD LEWISVILLE, NC 27023  
434-688-0609 rllomas@rlomaspe.com

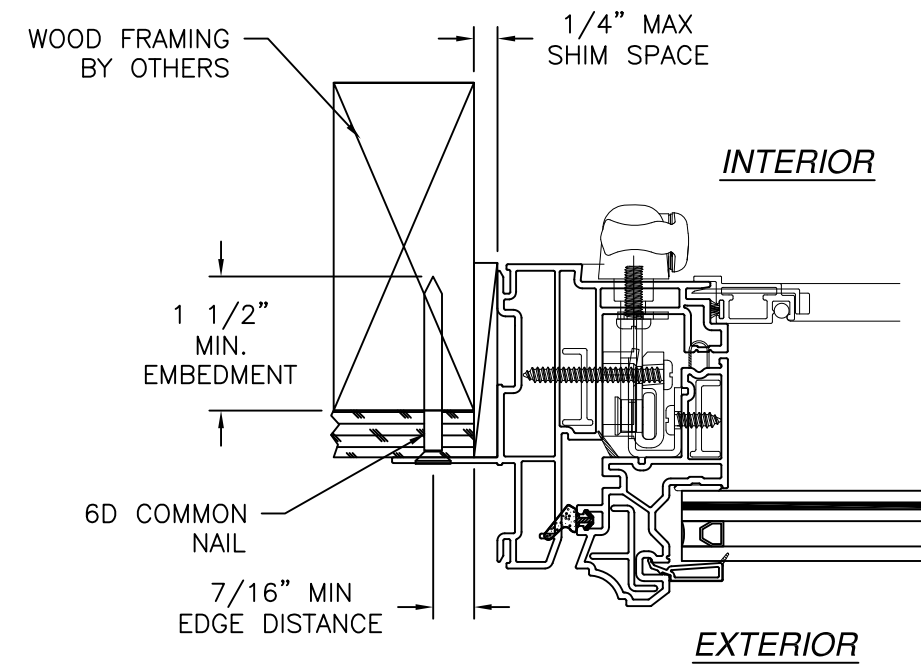


Luis R. Lomas P.E.  
TX No.: 101889

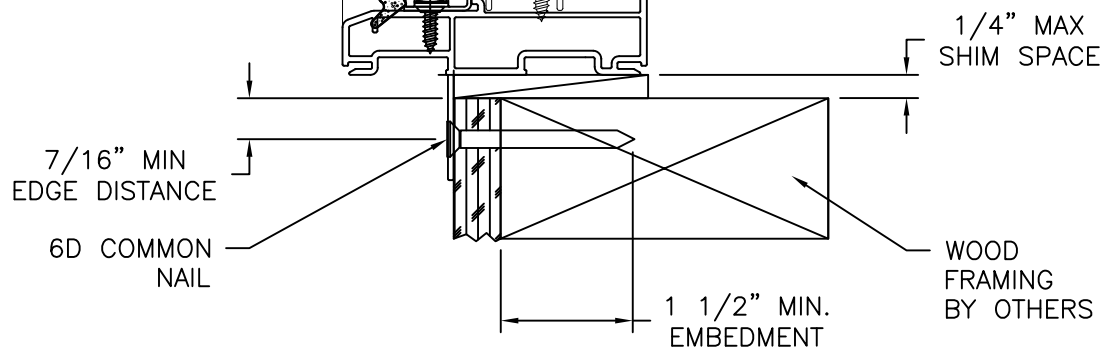
REVISIONS			
REV	DESCRIPTION	DATE	APPROVED



**VERTICAL CROSS SECTION**  
WOOD FRAMING OR 2X BUCK INSTALLATION



**JAMB INSTALLATION DETAIL**  
WOOD FRAMING OR 2X BUCK INSTALLATION



**NOTES:**

1. INTERIOR AND EXTERIOR FINISHES, BY OTHERS, NOT SHOWN FOR CLARITY.
2. PERIMETER AND JOINT SEALANT BY OTHERS TO BE DESIGNED IN ACCORDANCE WITH ASTM E2112

SIGNED: 05/02/2017

**EARTHWISE GROUP LLC, MANUFACTURED BY:**  
SHOWCASE CUSTOM VINYL WINDOWS AND DOORS  
1702 CULLEN, BLVD. HOUSTON, TX 77023

MODEL 143.191 CA REP/NC  
VINYL CASEMENT WINDOW, IMPACT 37" X 76"  
INSTALLATION DETAILS

DRAWN: A.R.	DWG NO. 08-03103	REV -
SCALE NTS	DATE 05/01/17	SHEET 7 OF 7

L. ROBERTO LOMAS P.E.  
1432 WOODFORD RD LEWISVILLE, NC 27023  
434-688-0609 rllomas@rlomaspe.com



Luis R. Lomas P.E.  
TX No.: 101889