

# WINCORE™

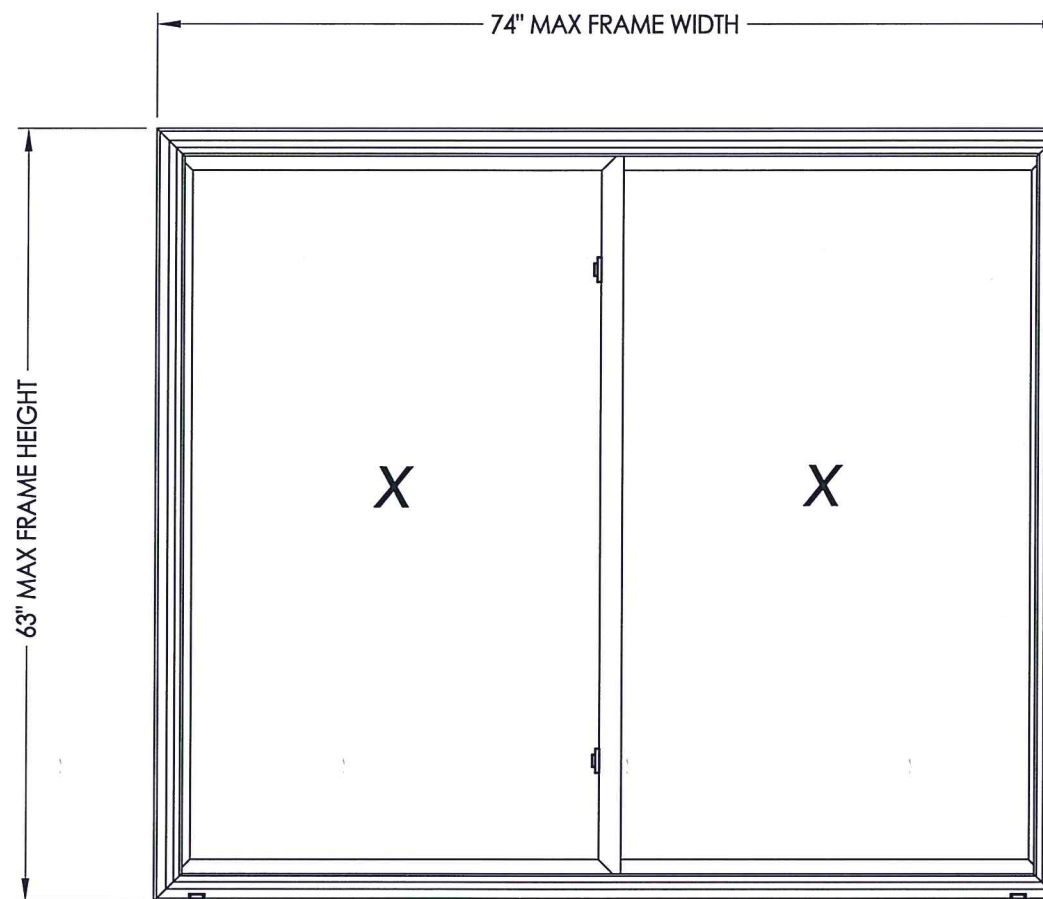
## WINDOWS & DOORS

250 Staunton Turnpike, Parkersburg, WV 26104

### 5400/5400S SERIES

## Vinyl Horizontal Sliding Window

### "NON-IMPACT"



EVALUATED FOR USE IN THE STATE OF TEXAS

**TDI WIN-1934**

The Wincore Horizontal Sliding Window described herein complies with the 2018 International Residential Code (IRC), Sections R301 & R609 and the 2018 International Building Code (IBC), Sections 1404.13, 1609, 1709.5, 2403 and 2404 subject to the following conditions:

1. Anchors shall be as listed and spaced as shown in the details. Anchor embedment to base material shall be beyond wall dressing or stucco.
2. When used in areas requiring wind-borne debris protection this product is required to be protected with an impact resistant covering that complies with Section R301.2.1.2 of the IRC and Section 1609.1.2 of the IBC.
3. Allowable design pressure requirements must be equal to or less than the design pressure rating shown in the design pressure chart, sheet 1 of this drawing.
4. Conditions not covered by this drawing are subject to further engineering analysis.

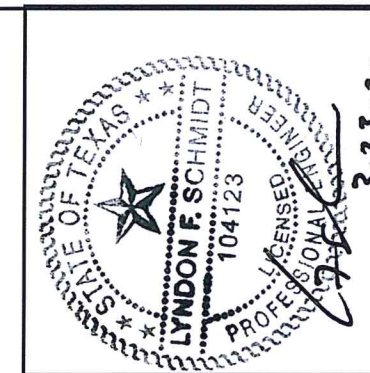
**TABLE OF CONTENTS**

SHEET#	DESCRIPTION
1	Typical elevations, design pressures and general notes
2	Horizontal & vertical cross sections & frame anchoring
3	Bill of materials, components & glazing details

XX SHOWN  
OX, XO ALSO APPROVED

MAX. FRAME DIMENSION	MAX. D.L.O. DIMENSION	GLASS TYPE	DESIGN PRESSURE (PSF)	
			POSITIVE	NEGATIVE
74.0" X 63.0"	33.13" X 56.06"	G1	+25.0	-25.0
63.0" X 44.0"	27.63" X 37.06"	G2	+30.0	-30.0
72.0" X 48.0"	32.13" X 41.06"	G1	+45.0	-45.0

\*\* Meeting stile reinforcement is not required



Documents Prepared By: Lyndon F. Schmidt, P.E.  
TEXAS P.E. #104123

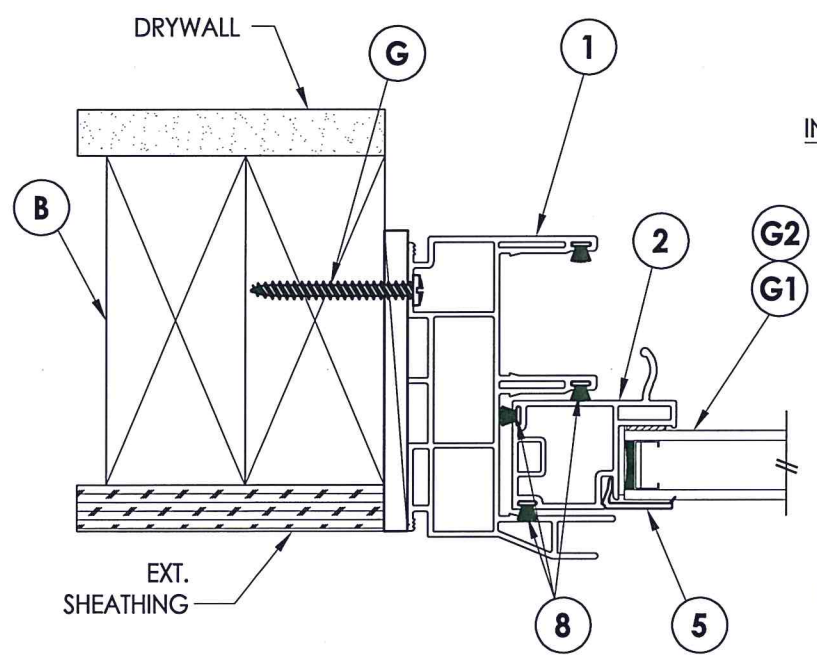
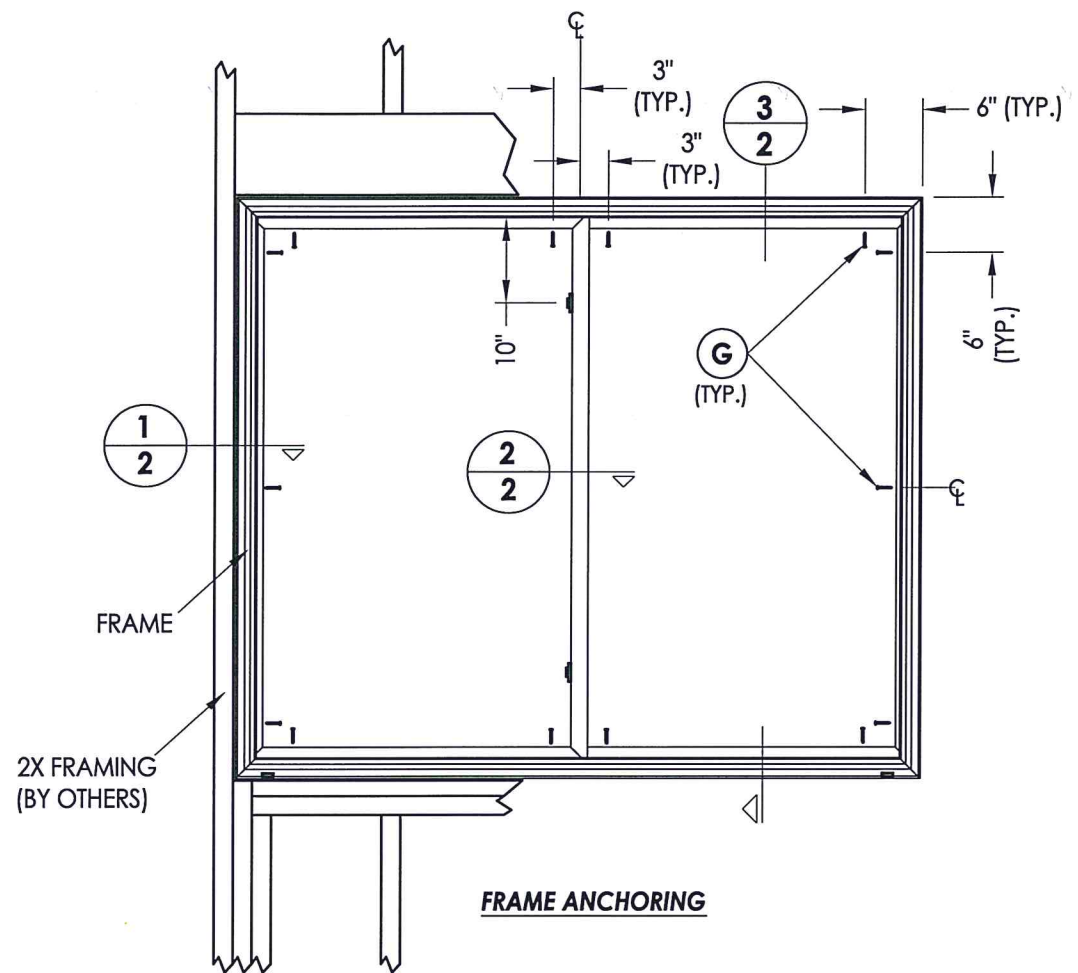
**RW** BUILDING CONSULTANTS, INC.  
P.O. Box 230 Valrico FL 33595  
Phone No.: 813.659.9197  
TEXAS BOARD OF PROFESSIONAL ENGINEERS  
CERTIFICATE OF REGISTRATION # F-11852

PRODUCT: 5400/5400S SERIES  
PART OR ASSEMBLY: TYPICAL ELEVATION, DESIGN PRESSURES & GENERAL NOTES

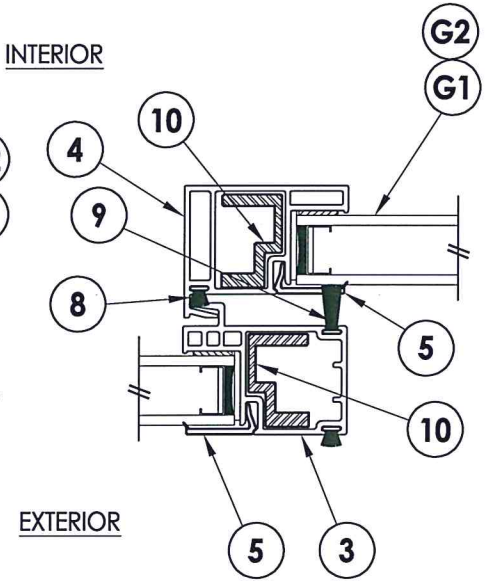
NO.	DATE	REVISIONS
2	3/19/20	UPDATE TO 2018 IBC/IRC
1	3/19/19	REVISE ANCHOR DIMENSIONS
		BY

DATE: 10/4/13  
SCALE: N.T.S.  
DWG. BY: JK  
CHK. BY: LFS  
DRAWING NO.: TX-4403  
SHEET 1 OF 3

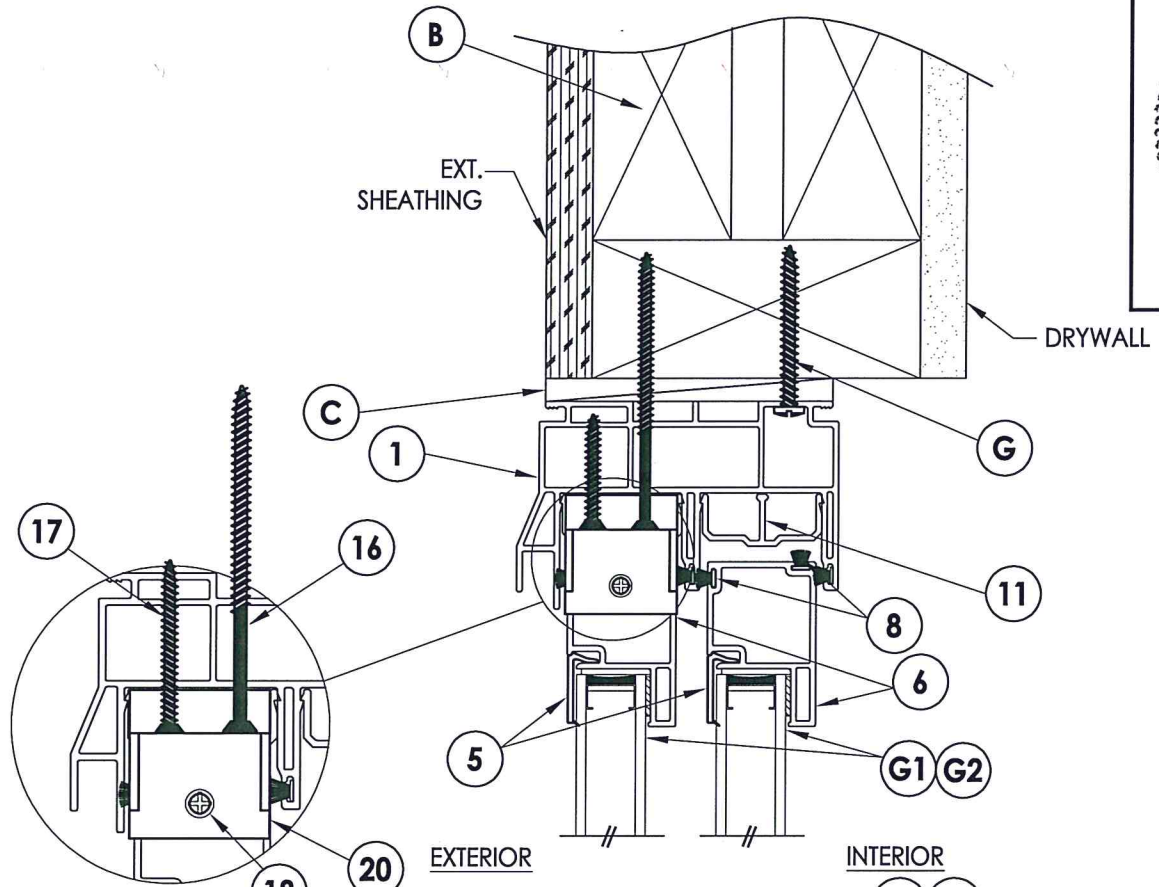




**1**  
**2** HORIZONTAL CROSS SECTION



**2**  
**2** HORIZONTAL CROSS SECTION



**3**  
**2** HORIZONTAL CROSS SECTION



Documents Prepared By: Lyndon F. Schmidt, P.E.  
TEXAS P.E. #104123

**RW** BUILDING CONSULTANTS, INC.  
P.O. Box 230 Valrico FL 33595  
Phone No.: 813.659.9197

TEXAS BOARD OF PROFESSIONAL ENGINEERS  
CERTIFICATE OF REGISTRATION # F-11852

PRODUCT: 5400/5400S SERIES

PART OR ASSEMBLY: HORIZONTAL & VERTICAL CROSS SECTIONS & FRAME ANCHORING

NO.	DATE	REVISIONS
2	3/19/20	UPDATE TO 2018 IBC/IRC
1	3/19/19	REVISE ANCHOR DIMENSIONS
		LFS
		BY

DATE: 10/4/13

SCALE: N.T.S.

DWG. BY: JK

CHK. BY: LFS

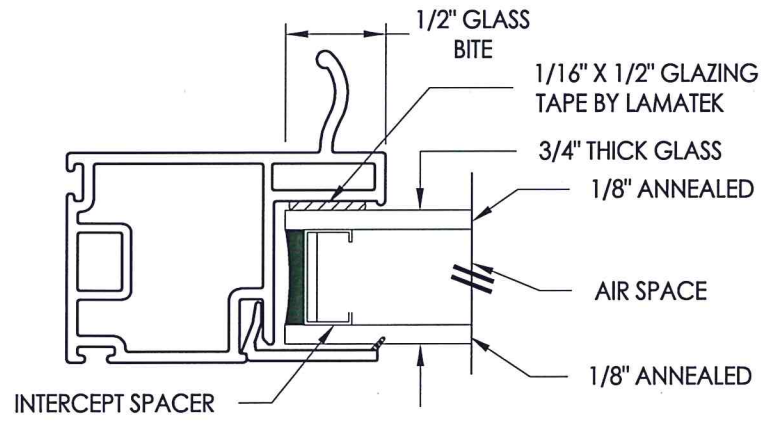
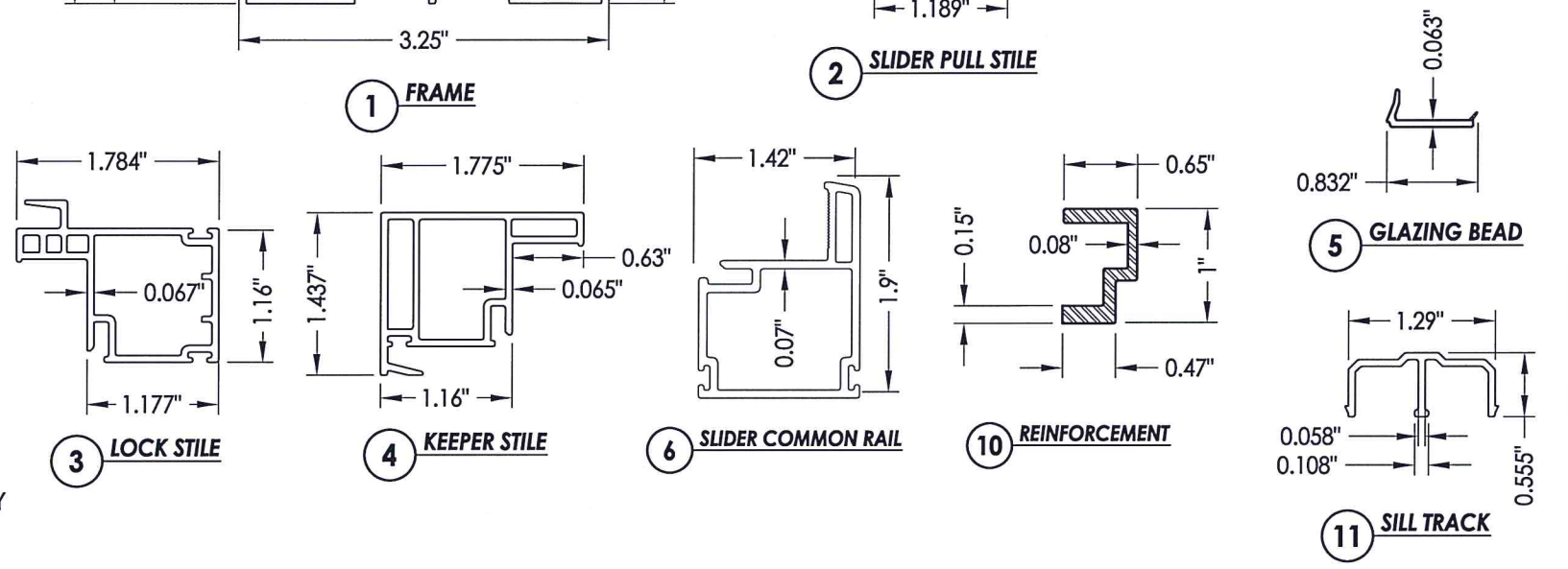
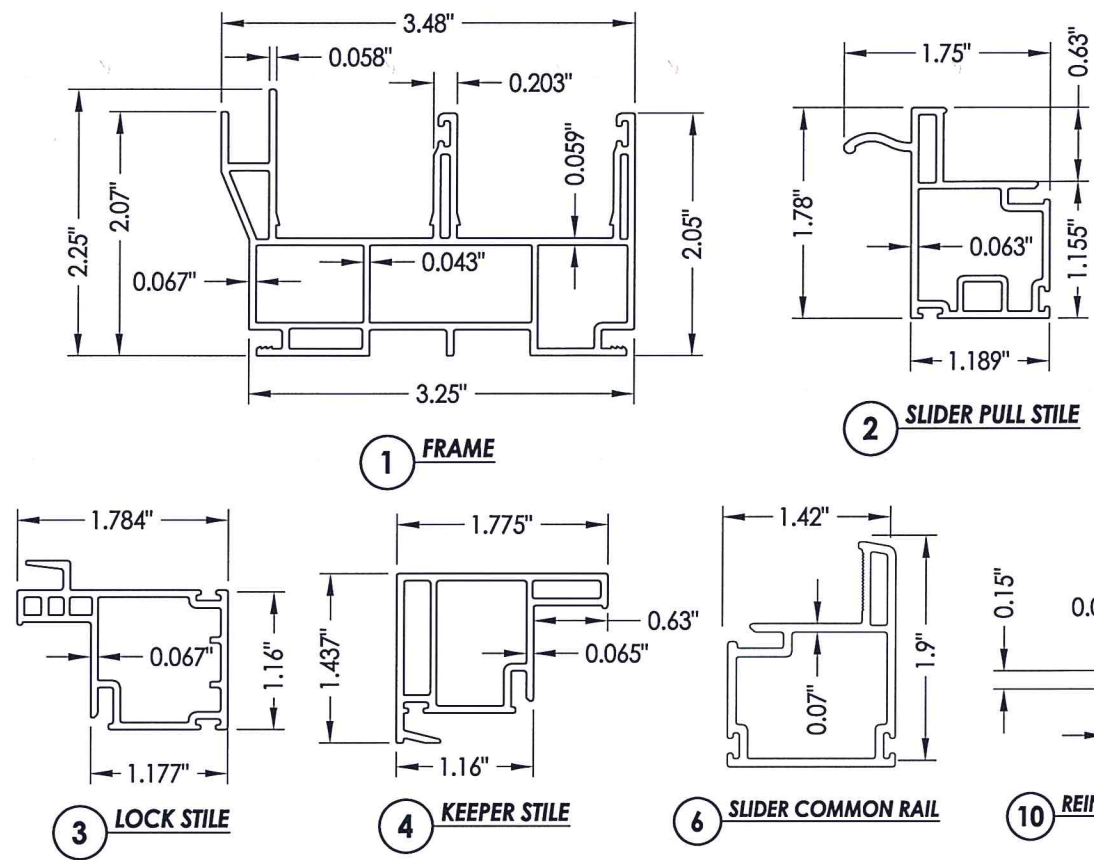
DRAWING NO.: TX-4403

SHEET 2 OF 3

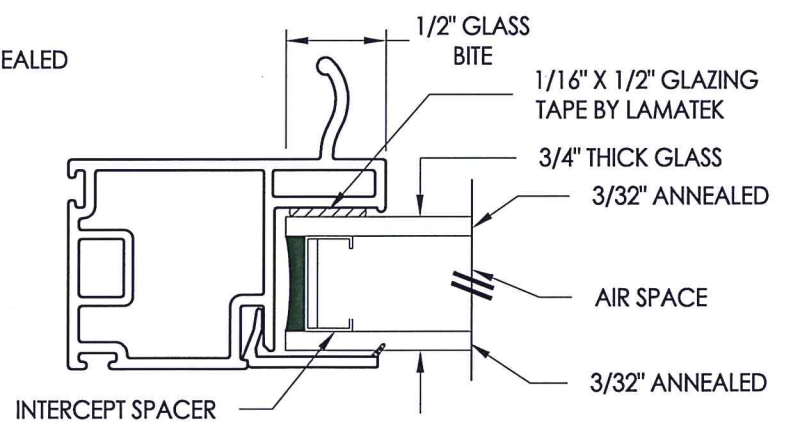


BILL OF MATERIALS		
ITEM #	DESCRIPTION	MATERIAL
B	2X FRAMING (SG >= 0.42)	WOOD
C	1/4" MAX. SHIM SPACE	-
G	#10 X 1-3/4" PPH WOOD SCREW (1-3/8" MIN. EMBEDMENT)	STEEL
1	FRAME*	PVC
2	SLIDER PULL STILE*	PVC
3	LOCK STILE*	PVC
4	KEEPER STILE*	PVC
5	GLAZING BEAD*	PVC
6	SLIDER COMMON RAIL*	PVC
7	BALL BEARING ROLLER	-
8	WEATHERSTRIP (0.230")	-
9	WEATHERSTRIP (0.380")	-
10	REINFORCEMENT	ALUM
11	SILL TRACK*	PVC
15	WEEPHOLE CAP*	PVC
16	#8 X 3" PFH SMS	STEEL
17	#8 X 1-1/4" PFH SMS	ALUM
18	#8 X 3/4" PFH WOOD SCREW	STEEL
19	LOWER FLANKER STOP	NYLON
20	UPPER FLANKER STOP	NYLON

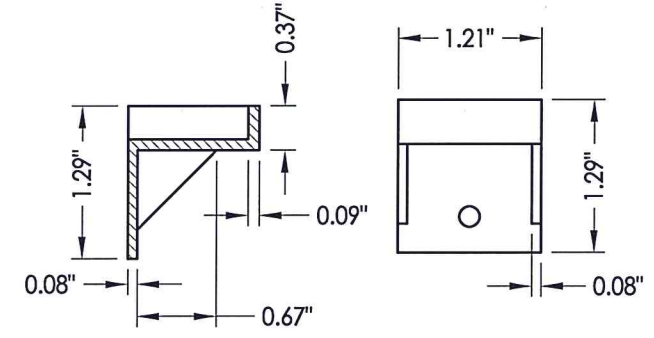
\* THE APPROVED WHITE RIGID PVC EXTERIOR EXTRUSIONS FOR WINDOWS ARE TO BE PRODUCED BY EXTRUDERS LICENSEES IN "AAMA CERTIFICATION PROGRAMS FOR RIGID PVC EXTRUSIONS".



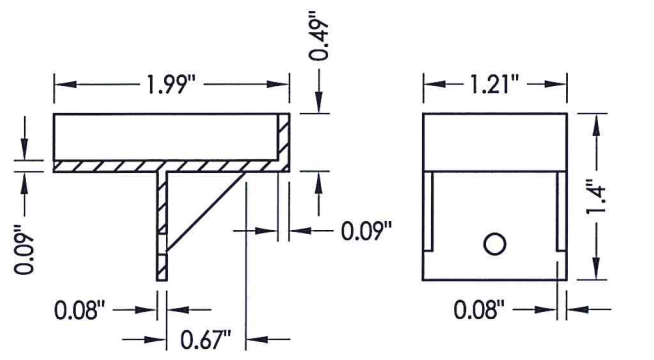
G1 GLAZING DETAIL



G2 GLAZING DETAIL



19 LOWER FLANKER STOP



20 UPPER FLANKER STOP

Documents Prepared By: Lyndon F. Schmidt, P.E. TEXAS P.E. #104123

**RW** BUILDING CONSULTANTS, INC.  
P.O. Box 230 Valrico FL 33585  
Phone No.: 813.659.9197

TEXAS BOARD OF PROFESSIONAL ENGINEERS  
CERTIFICATE OF REGISTRATION # F-11852

PRODUCT:	5400/5400S SERIES	
PART OR ASSEMBLY:	BILL OF MATERIALS, COMPONENTS & GLAZING DETAILS	
NO.	DATE	BY
2	3/19/20	LFS
1	3/19/19	LFS
REVISIONS		
DATE:	10/4/13	
SCALE:	N.T.S.	
DWG. BY:	JK	
CHK. BY:	LFS	
DRAWING NO.:	TX-4403	
SHEET	3	OF 3

© 2013 R.W. BUILDING CONSULTANTS INC.