

GENERAL NOTES:

- ALL FASTENERS SHALL BE IN ACCORDANCE WITH THESE DRAWINGS. SPECIFIED ANCHOR EMBED TO BASE MATERIAL SHALL BE BEYOND WALL FINISH OR STUCCO.
- OPENINGS, BUCKING & BUCKING FASTENERS MUST BE PROPERLY DESIGNED & INSTALLED TO TRANSFER WIND LOADS TO THE STRUCTURE.
- THESE NON-IMPACT RATED PRODUCT INSTALLATIONS ARE IN ACCORDANCE WITH AND MEET THE REQUIREMENTS OF THE 2018 INTERNATIONAL BUILDING CODE (IBC).
- ALL ANCHORS SECURING PRODUCT FRAME TO PRESSURE TREATED BUCKS OR WOOD FRAMING SHALL BE CAPABLE OF RESISTING CORROSION CAUSED BY THE PRESSURE TREATING CHEMICALS IN THE WOOD.
- TO THE BEST OF OUR KNOWLEDGE, THE PRODUCT SHOWN HEREIN IS CERTIFIED & QUALITY ASSURED BY A NATIONALLY ACCREDITED CERTIFICATION/QA ENTITY & SHALL BE LABELED IN ACCORDANCE WITH CERTIFICATION/QA ENTITIES SPECIFICATIONS. PRODUCT ASSEMBLY IS NOT PART OF THIS DRAWING AND SHALL BE IN ACCORDANCE WITH THE MANUFACTURER'S QUALITY ASSURANCE SPECIFICATIONS & TESTING REPORTS.
- CERTIFICATION OF THESE PRODUCT INSTALLATIONS SHALL BE CONSIDERED VOID IF ANY OF THE FOLLOWING APPLY: 1) THEY ARE INSTALLED WITHOUT A BUILDING PERMIT FROM THE APPLICABLE LOCAL BUILDING DEPARTMENT. 2) IF THEY ARE INSTALLED BY ANYONE OTHER THAN A LICENSED CONTRACTOR EXPERIENCED WITH WINDOW/DOOR INSTALLATIONS. 3) IF CHANGES HAVE OCCURRED TO THE PRODUCT'S CERTIFICATION ENTITY'S CERTIFICATE THAT CAUSE THESE INSTALLATIONS TO BE INCORRECT OR INCONSISTENT WITH WHAT HAS BEEN TESTED.
- THE LEAST DESIGN PRESSURE SPECIFIED EITHER IN THIS DRAWING OR IN THE PRODUCTS CERTIFICATION SHALL CONTROL FOR THE INSTALLED PRODUCT.
- THESE DRAWINGS CERTIFY THE PRODUCT INSTALLATION ONLY. WATER PROOFING OF THE INSTALLED PRODUCT IS NOT PART OF THIS INSTALLATION CERTIFICATION. THAT RESPONSIBILITY SHALL BE THAT OF THE MANUFACTURER &/OR INSTALLER.

ALLOWABLE SINGLE WINDOW SIZE/PRESSURE TABLE

| MAXIMUM FRAME WIDTH (IN.) | MAXIMUM FRAME HEIGHT (IN.) | ALLOWABLE PRESSURE (+/- PSF) |
|---------------------------|----------------------------|------------------------------|
| 41 | 77 | 40 |
| 35 | 96 | 50 |
| 37 1/2 | 75 | 50 |

CONDITIONS SHOWN IN THIS DRAWING ARE GOVERNED BY INSTALLATION REQUIREMENTS ONLY. THE GOVERNING CONDITIONS ON ANY SPECIFIC WINDOW UNIT SHALL BE THE LESSER OF THOSE SPECIFIED IN THE WINDOWS STATE APPROVAL OR THAT SHOWN IN THESE DRAWINGS.

FRAME ANCHOR REQUIREMENTS TABLE

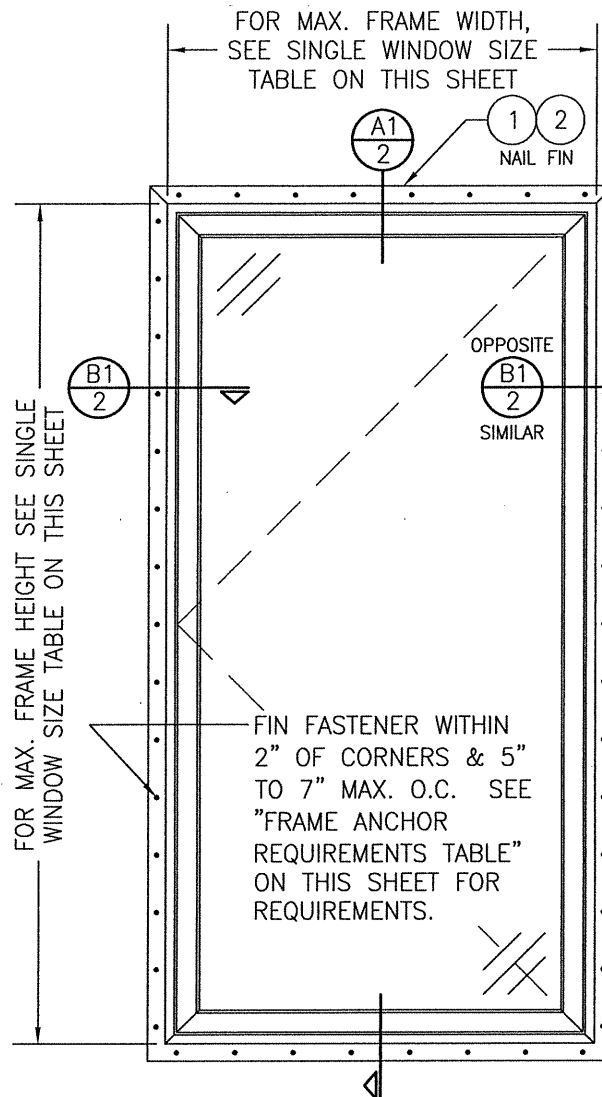
| OPENING TYPE (SUBSTRATE) | FRAME/CLIP/NAIL FIN TO OPENING FASTENER TYPE | MINIMUM EMBED | MINIMUM EDGE DIST. |
|--|--|---------------|--------------------|
| FRAME SCREWS | | | |
| MIN. 2X4 WOOD FRAME OR BUCK (MIN. GR. 3 & G=0.55) | NO. 10 SMS OR WOOD SCREW | 1 1/4" | 3/4" |
| MIN. 18 GA. 33 KSI METAL STUD | NO. 10 GR. 5 SELF TAP/DRILL SCREW | FULL | 1/2" |
| MIN. 1/8" THK A36 STEEL | NO. 10 GR. 5 SELF TAP/DRILL SCREW | FULL | 1/2" |
| MIN. 1/8" THK 6063-T5 ALUM. | NO. 10 GR. 5 SELF TAP/DRILL SCREW | FULL | 1/2" |
| C-90 CMU/2500 PSI CONCRETE | (1) 1/4" CONCRETE SCREW | 1 1/4" | 2" |
| (2) INSTALLATION CLIP SCREWS (STANDARD BENT CONDITION) | | | |
| MIN. 2X4 WOOD FRAME OR BUCK (MIN. GR. 3 & G=0.55) | NO. 8 X 1 1/2" SMS | 1 3/8" | (2) N/A |
| MIN. 1/8" THK A36 STEEL | NO. 8 GR. 5 SELF TAP/DRILL SCREW | FULL | (2) N/A |
| MIN. 1/8" THK 6063-T5 ALUM. | NO. 8 GR. 5 SELF TAP/DRILL SCREW | FULL | (2) N/A |
| INSTALLATION CLIP SCREWS (ALTERNATE STRAIGHT CONDITION) | | | |
| MIN. 2X6 WOOD FRAME OR BUCK (MIN. GR. 3 & G=0.55) | NO. 8 X 1 1/2" SMS | 1 3/8" | 3/4" |
| MIN. 18 GA. 33 KSI METAL STUD | NO. 8 GR. 5 SELF TAP/DRILL SCREW | FULL | 1/2" |
| MIN. 1/8" THK A36 STEEL | NO. 8 GR. 5 SELF TAP/DRILL SCREW | FULL | 1/2" |
| MIN. 1/8" THK 6063-T5 ALUM. | NO. 8 GR. 5 SELF TAP/DRILL SCREW | FULL | 1/2" |
| (3) NAILING FIN FASTENERS | | | |
| MIN. 2X4 WOOD FRAME OR BUCK (MIN. GR. 3 & G=0.55) | NO. 8 X 1 1/2" SMS | 1 3/8" | 1/2" |
| MIN. 2X4 WOOD FRAME OR BUCK (MIN. GR. 3 & G=0.55) | 11 GA. ROOFING NAIL | 1 3/8" | 1/2" |
| MIN. 1/8" THK A36 STEEL | NO. 8 GR. 5 SELF TAP/DRILL SCREW | FULL | 1/2" |
| MIN. 1/8" THK 6063-T5 ALUM. | NO. 8 GR. 5 SELF TAP/DRILL SCREW | FULL | 1/2" |

- CONCRETE SCREWS SHALL BE ELCO ULTRACONS (C.S.), ELCO CRETE-FLEX (S.S.), ITW RAMSET/RED HEAD TAPCONS (C.S. OR S.S.) OR HILTI KWIK-CON II (C.S OR S.S.).
- STANDARD BENT CLIP INSTALLATION SCREWS SHALL BE POSITIONED WITHIN 1/4" OF THE BUCK/SUBSTRATE EDGE AND, IF INTO WOOD, ANGLED 20 TO 30 DEGREES INTO THE BUCK.
- WHEN SCREWS ARE USED WITH THE NAIL FIN, THEY MUST BE A WAFFLE HEAD SCREW OR HAVE A FLAT WASHER AT THE SCREW HEAD.

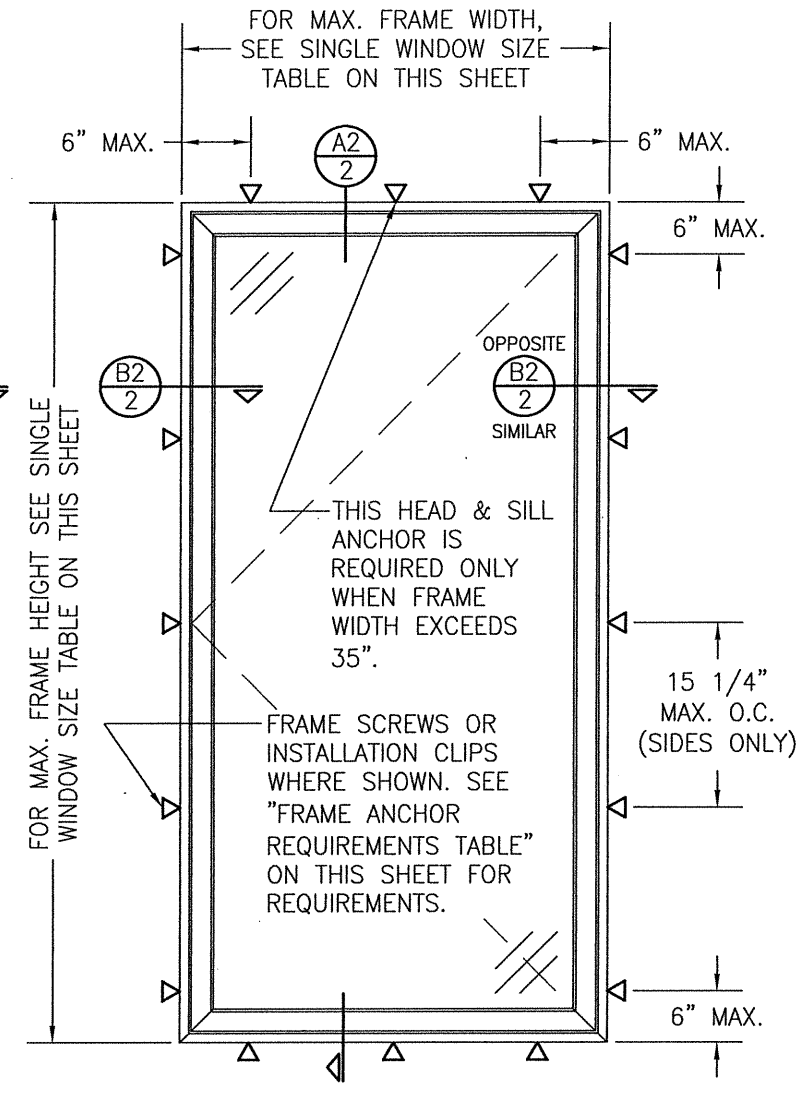
EDGE DISTANCE MAY BE DECREASED TO 1/2" IF SCREWS ARE ANGLED 15 TO 20 DEGREES AWAY FROM THE EDGE.

ANCHOR/SUBSTRATE EVALUATION NOTE:
ALL ANCHORS IN THEIR SPECIFIED SUBSTRATES HAVE BEEN ANALYZED IN ACCORDANCE WITH THEIR APPLICABLE STANDARD(S) AND ARE FOUND TO BE CAPABLE OF SUPPORTING ALL LOADS IMPOSED ON THEM UNDER THE GUIDELINES OF THIS DOCUMENT. ANY SUBSTRATES OR CONDITIONS OUTSIDE OF WHAT IS SHOWN HERE-IN SHALL BE SUBJECT TO JOB SPECIFIC ENGINEER'S REVIEW & CERTIFICATION.

INSTALLATION EVALUATION IS BASED ON APPLICABLE ANCHOR STANDARDS AND/OR INFORMATION & RESULTS FROM APPLICABLE TEST REPORTS. THE BUILDING CODE VERSION CONSIDERED WITH THE EVALUATION WAS THAT IN FORCE AT THE TIME OF THE EVALUATION. IN THE EVENT OF CODE VERSION CHANGES/UPDATES OR IN THE EVENT THAT NEW OR ADDITIONAL TESTING IS COMPLETED ON THE REFERENCED PRODUCT, PRIOR TO STATING CODE COMPLIANCE, THE MANUFACTURER SHALL CONFIRM WITH THE INSTALLATION EVALUATION ENGINEER OF RECORD THAT THE INSTALLATIONS SPECIFIED HERE-IN ARE CURRENT WITH THE THEN CURRENT TESTING, CODE AND APPLICABLE STANDARDS.



EXTERIOR ELEVATION: SINGLE WINDOW
SCALE: 3/4" = 1'-0"
(NAIL FIN MOUNT CONDITION)

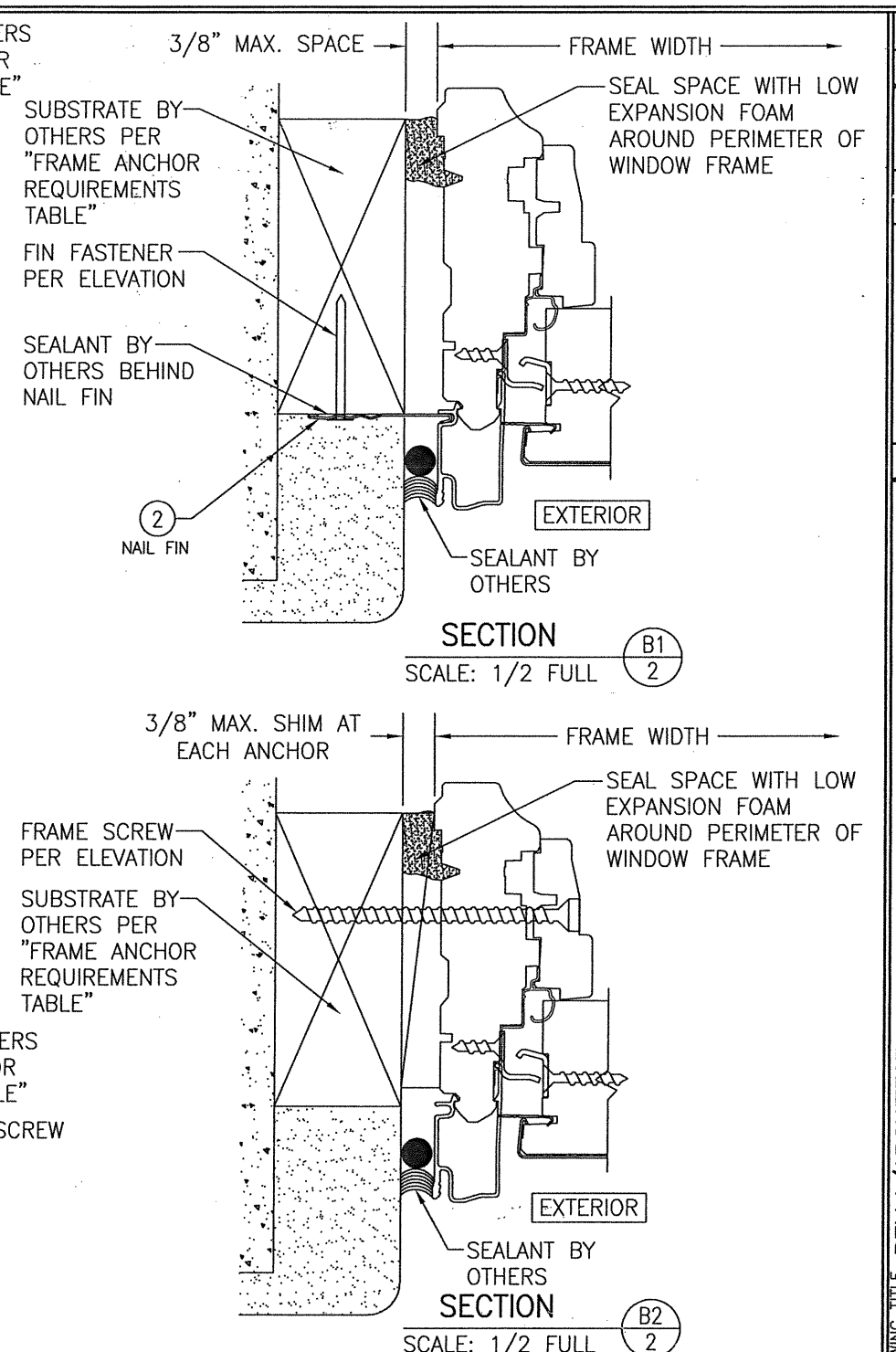
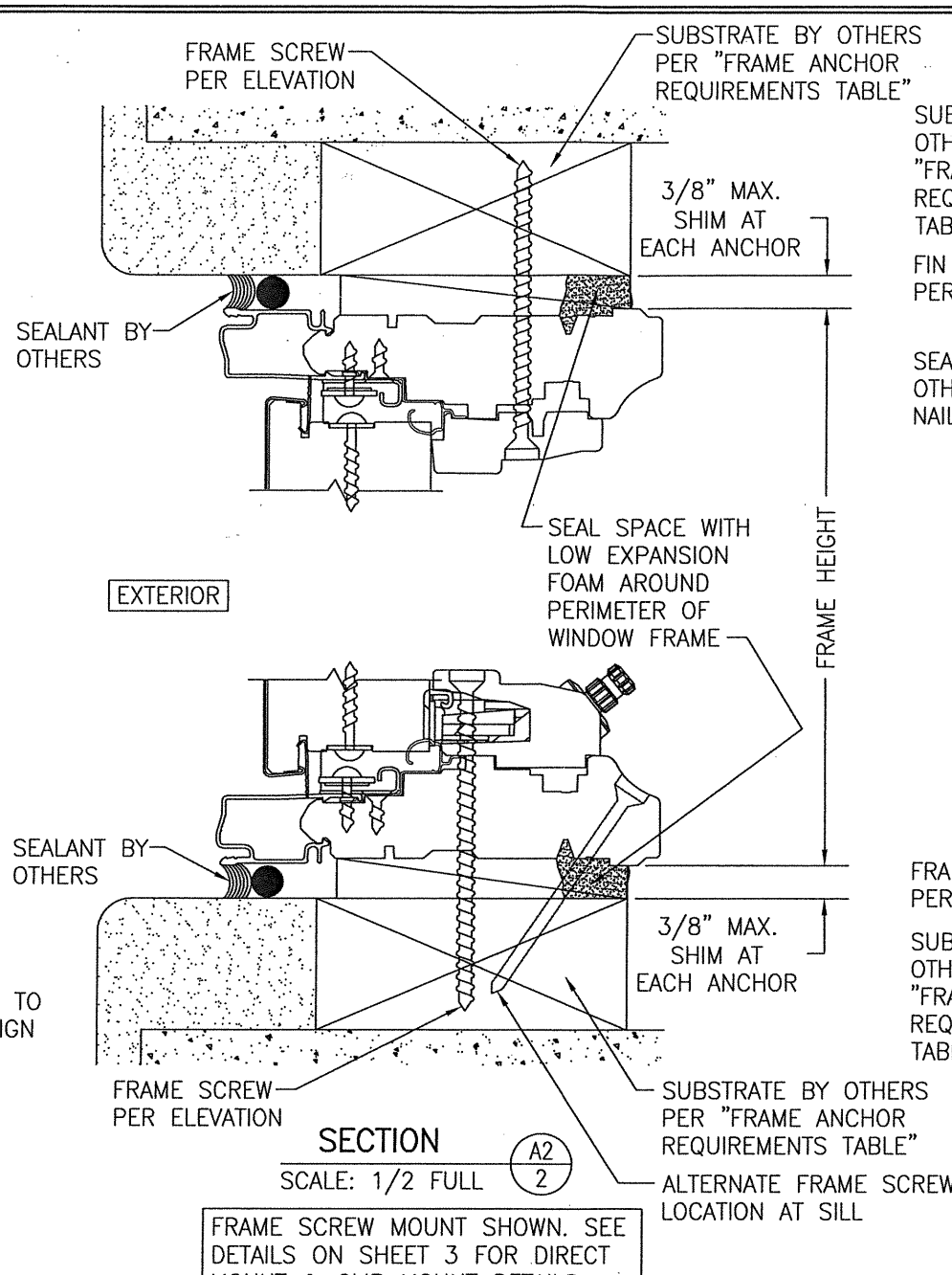
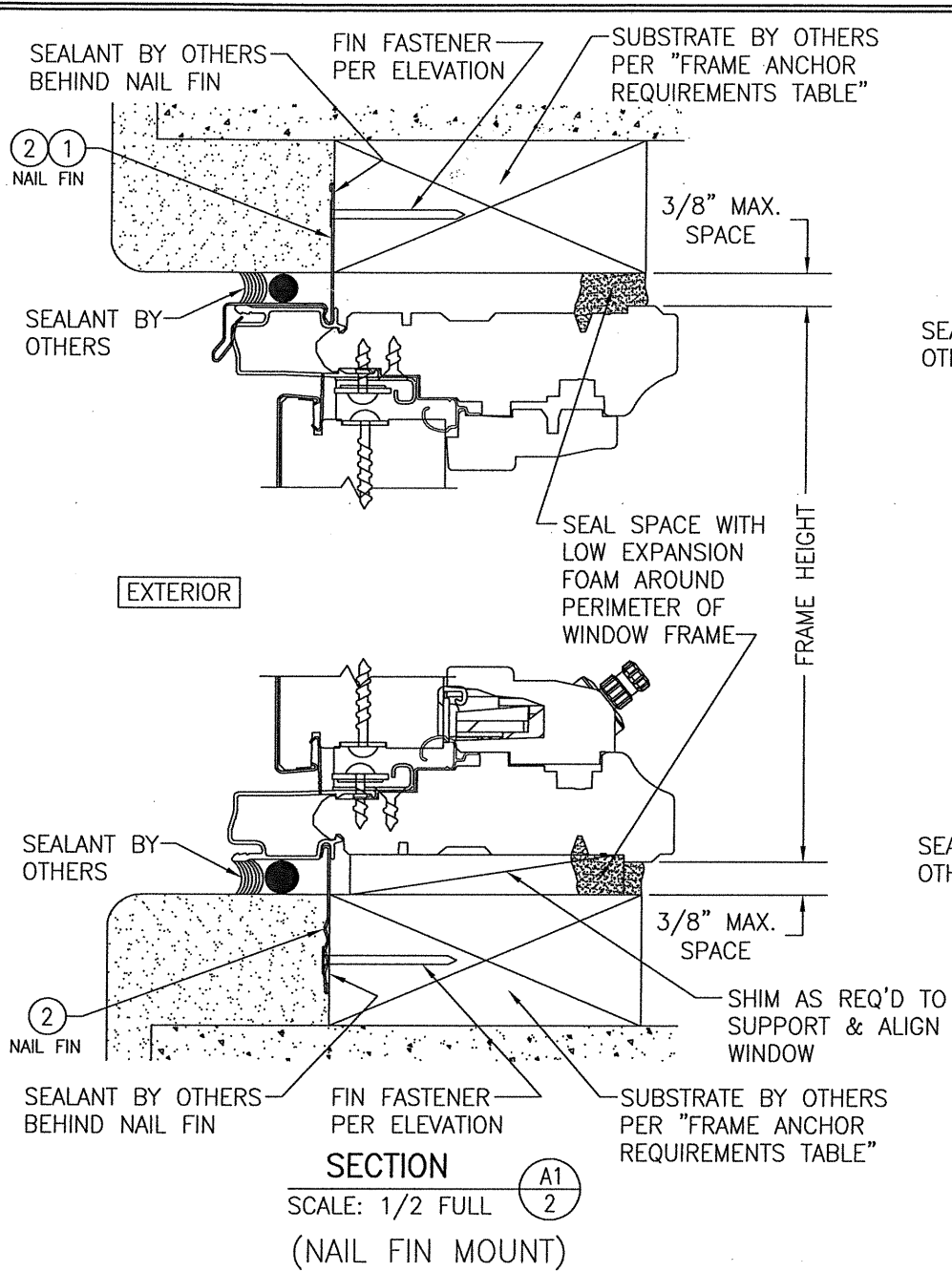


EXTERIOR ELEVATION: SINGLE WINDOW
SCALE: 3/4" = 1'-0"
(FRAME SCREW AND CLIP MOUNT CONDITION)

INSTALLATION NOTE:
WHEN NECESSARY, INSTALLATION METHODS MAY BE MIXED WITH ANY ONE WINDOW SUCH THAT INDIVIDUAL SIDES OF THE WINDOW MAY USE ONE OR THE OTHER ANCHOR METHOD (EXAMPLE: SILL MAY USE FRAME SCREWS METHOD WHILE OTHER SIDES USE FIN)

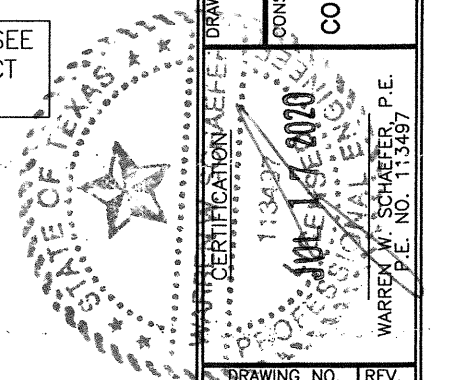
| | | | |
|---|-----------------------|------------------|-------------------|
| DRAWN BY: W.W.S. | CHECKED BY: W.W.S. | PLOT: 1=16 | DATE: 02/05/15 |
| DATE 01/06/20 | DATE 03/09/20 | BY W.W.S. | BY W.W.S. |
| REVISION DESCRIPTION | NO. | | |
| A1 UPDATE FOR NEW TESTING | | | |
| B1 ADD NEW WINDOW SIZE | | | |
| DRAWING TITLE: PELLA/ARCHITECT NON-IMPACT CLAD RECTANGULAR VENT CASEMENT WINDOWS | | | |
| JOB INFORMATION: PELLA CORPORATION 102 MAIN STREET PELLA, IA 50219 641-621-1000 | | | |
| CONSULTANTS: W. W. SCHAEFER ENGINEERING & CONSULTING, P.A. (REG. NO. F-14980) 7480 150TH COURT NORTH PALM BEACH GARDENS, FL 33418 PHONE: 561-744-3424 | | | |
| STATE OF TEXAS PROFESSIONAL ENGINEER W. W. SCHAEFER, P.E. P.E. NO. 113469 | | | |
| DRAWING NO. 1604T | | REV. B | |
| SHEET NO. 1 | | OF 3 | |

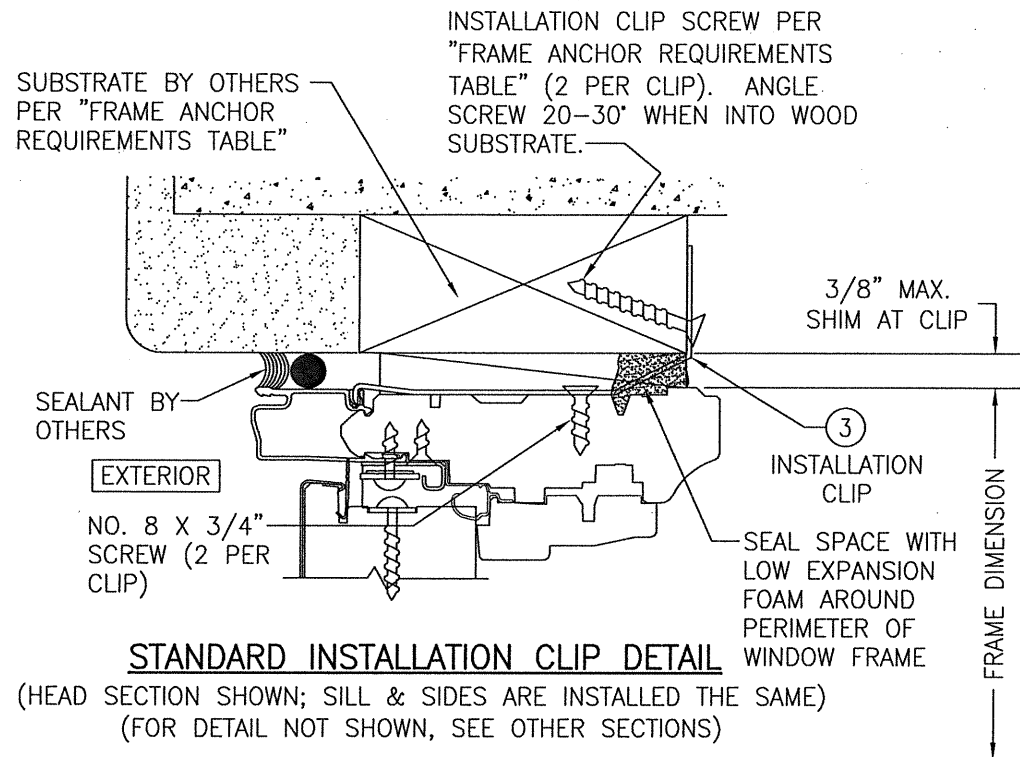
THESE DRAWINGS ARE APPLICABLE ONLY TO THE PRODUCT SPECIFIED. THEY MAY NOT BE USED FOR THE ASSEMBLY AND/OR INSTALLATION OF ANY OTHER PRODUCT NOR MAY THEY BE USED FOR RATIONAL AND/OR LOCAL APPROVAL OF ANY PRODUCT NOT PRODUCED BY THE MANUFACTURER STATED ON THESE DRAWINGS.



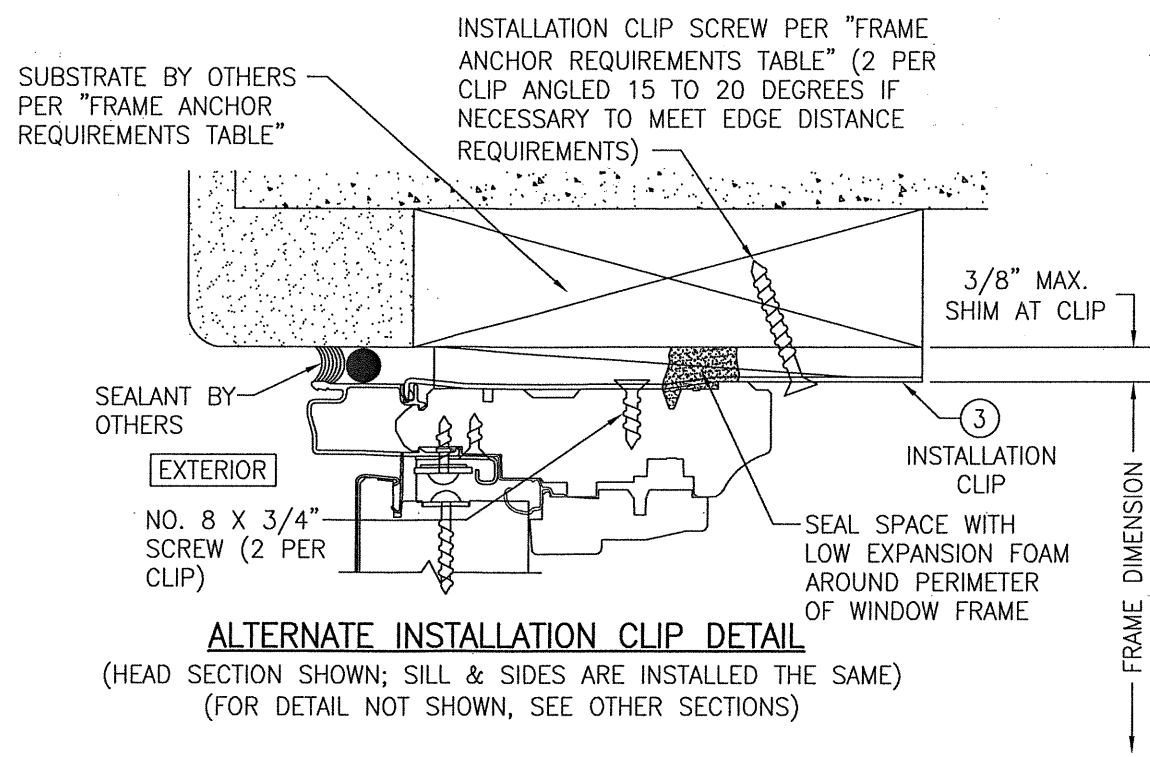
NOTE: FRAME AND SASH PROFILES SHOWN IN THESE SECTIONS ARE APPLICABLE TO PELLA'S "TRADITIONAL" WINDOW OFFERING. PELLA'S "CONTEMPORARY" WINDOW OFFERING PROFILES ALSO APPLY TO THIS WINDOW APPROVAL & ARE INSTALLED THE SAME.

| | | | |
|--|----------------------|--------------------|------|
| DRAWN BY: W.W.S. | | CHECKED BY: W.W.S. | |
| PLOT: 1-2 | | DATE: 02/05/15 | |
| NO. | REVISION DESCRIPTION | BY | DATE |
| | | | |
| DRAWING TITLE: PELLA/ARCHITECT NON-IMPACT CLAD RECTANGULAR VENT CASEMENT WINDOWS | | | |
| JOB INFORMATION: PELLA CORPORATION 102 MAIN STREET PELLA, IA 50219 641-621-1000 | | | |
| CONSULTANTS: W. W. SCHAEFER ENGINEERING & CONSULTING, P.A. (REG. NO. F-14980) 7480 150TH COURT NORTH PALM BEACH GARDENS, FL 33418 PHONE: 561-744-3424 | | | |
| DRAWING NO. 1604T | | | |
| SHEET NO. 2 OF 3 | | | |
| REV. B | | | |

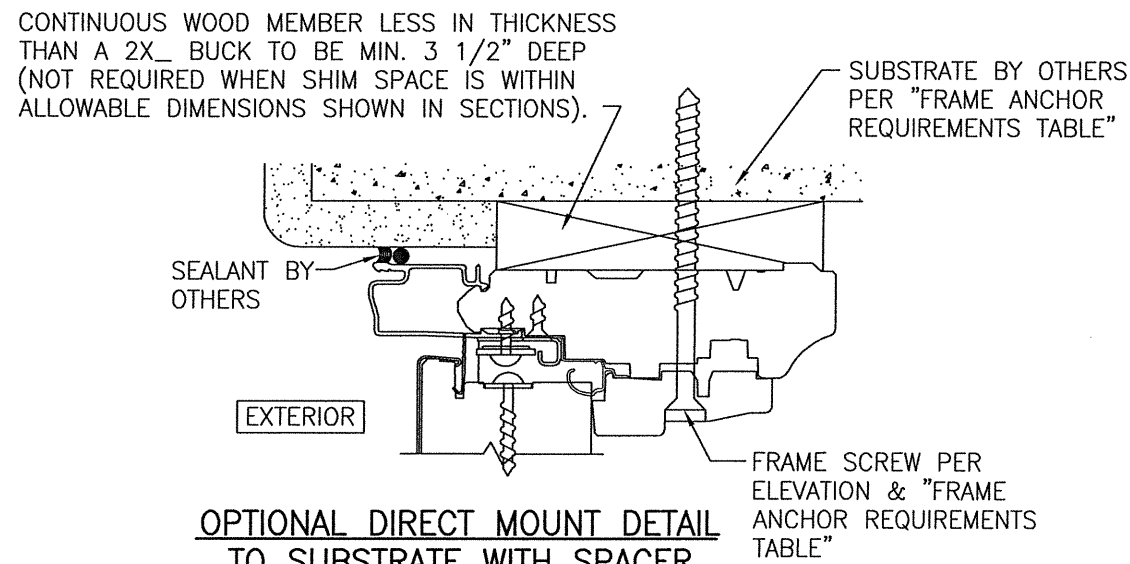




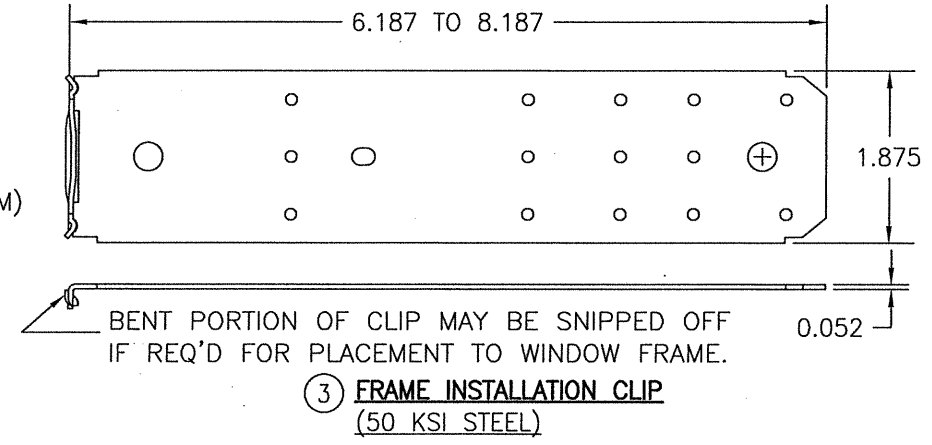
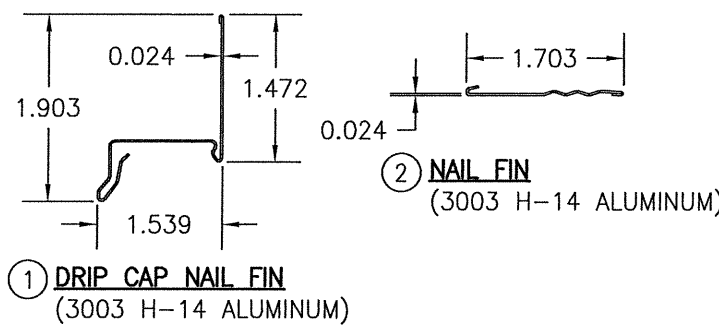
STANDARD INSTALLATION CLIP DETAIL
 (HEAD SECTION SHOWN; SILL & SIDES ARE INSTALLED THE SAME)
 (FOR DETAIL NOT SHOWN, SEE OTHER SECTIONS)



ALTERNATE INSTALLATION CLIP DETAIL
 (HEAD SECTION SHOWN; SILL & SIDES ARE INSTALLED THE SAME)
 (FOR DETAIL NOT SHOWN, SEE OTHER SECTIONS)



OPTIONAL DIRECT MOUNT DETAIL TO SUBSTRATE WITH SPACER
 (HEAD SECTION SHOWN; SILL & SIDES ARE INSTALLED THE SAME)
 (FOR DETAIL NOT SHOWN, SEE OTHER SECTIONS)



| | | | |
|--|----|----------------------|-----|
| DRAWN BY: W.W.S. | | CHECKED BY: W.W.S. | |
| PLOT: 1-2 | | DATE: 02/05/15 | |
| DATE | BY | REVISION DESCRIPTION | NO. |
| | | | |
| | | | |
| | | | |
| DRAWING TITLE: PELLA/ARCHITECT NON-IMPACT CLAD RECTANGULAR VENT CASEMENT WINDOWS CONSULTANTS: W. W. SCHAEFER ENGINEERING & CONSULTING, P.A. (REG. NO. F-14980) 7480 150TH COURT NORTH, PALM BEACH GARDENS, FL 33418, PHONE: 561-744-3424 JOB INFORMATION: PELLA CORPORATION, 102 MAIN STREET, PELLA, IA 50219, 641-621-1000 | | | |
| CERTIFICATION: WARREN W. SCHAEFER, P.E. LICENSE NO. 113497 JUL 17 2020 | | | |
| DRAWING NO. 1604T | | REV. B | |
| SHEET NO. 3 OF 3 | | | |

