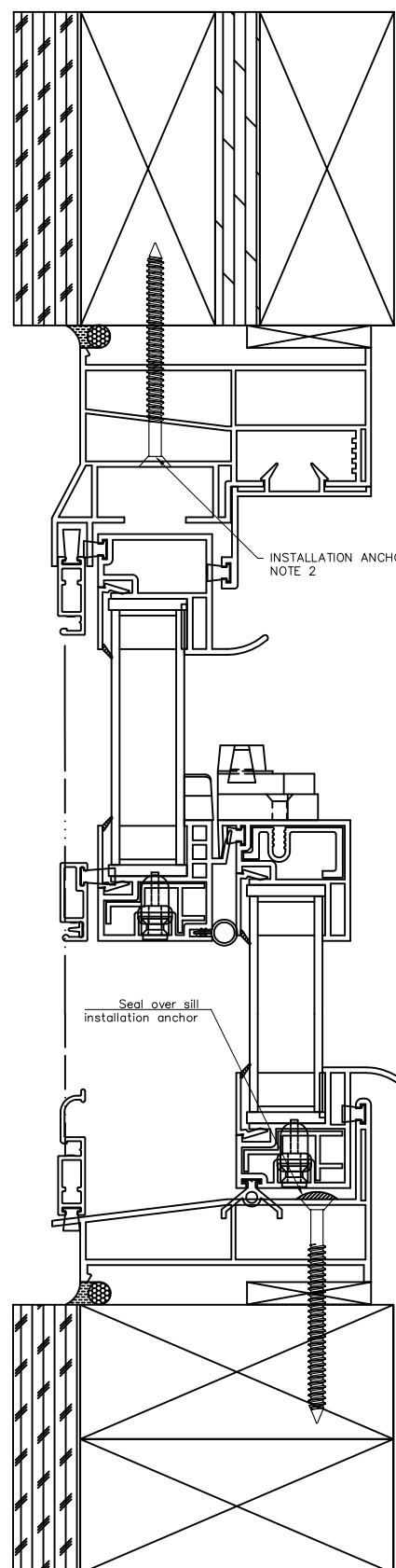
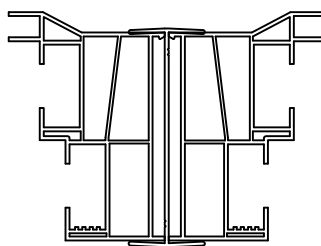


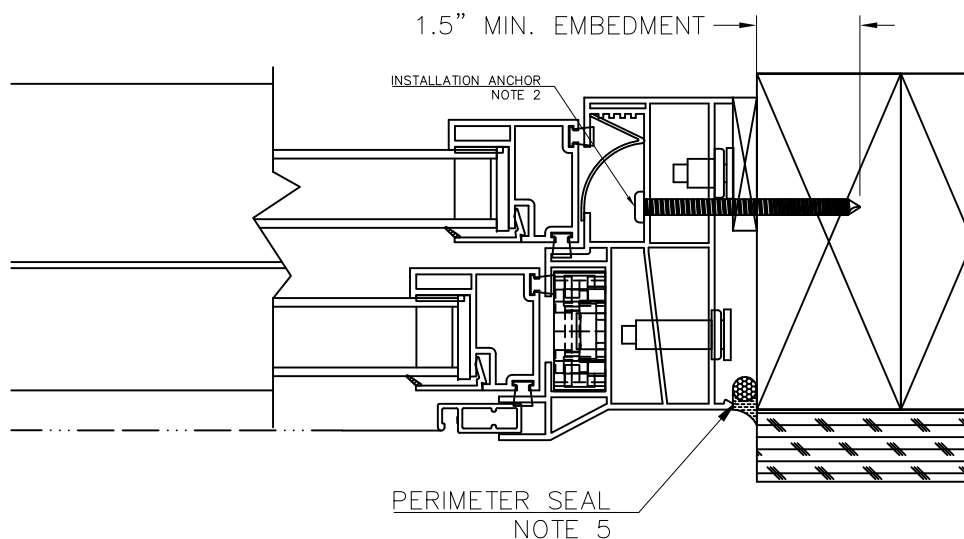
Head and Sill Detail
Single Unit



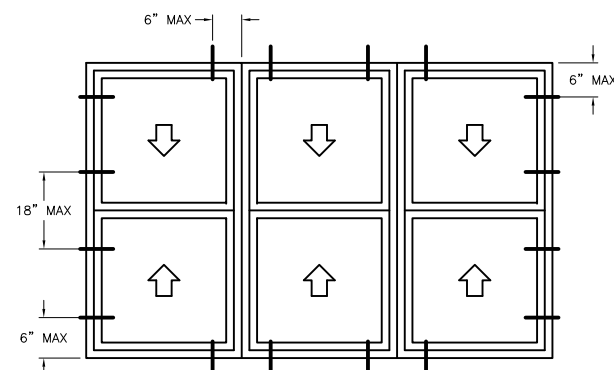
Head and Sill Detail
Mullied Twin and
Triple



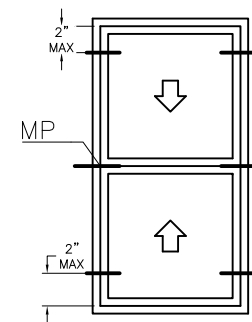
STANDARD MULLION
DETAIL
Scale- 1:3



Jamb Detail
All Windows



Elevation View



Elevation View

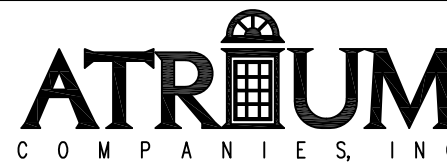
Table 1 – Verified Installations

Configuration	DP (psf)	WIDTH (in)	HEIGHT (in)
Single Unit	+/- 25.0	48	78
Single Unit	+/- 35.0	36	74
Twin Unit	+/- 35.0	72.5	74
Triple Unit	+/- 35.0	109	74

NOTES:

- INSTALLATIONS SHOWN ON THIS DRAWING HAVE BEEN VERIFIED AS THE AS-TESTED INSTALLATION FOR THE PERFORMANCE LEVEL SHOWN. VERIFIED PRODUCTS ARE LISTED IN TABLE 1. THIS DRAWING APPLIES ONLY TO THOSE PRODUCTS.
- INSTALLATION ANCHORS SHALL BE #10 SCREWS OF SUFFICIENT LENGTH TO ACHIEVE MINIMUM EMBEDMENT OF 1.5" INTO WOOD FRAMING MEMBER. SCREWS SHALL SATISFY NATIONAL DESIGN SPECIFICATION FOR MATERIAL PROPERTIES AND DIMENSIONS. PER NDS-2005 11.1.4.7, EDGE DISTANCES SHALL BE SUFFICIENT TO PREVENT SPLITTING.
- WOOD FRAMING SHALL BE SPRUCE-PINE-FIR (G=0.42) OR DENSER.
- INSTALLATION ANCHORS:
 - SINGLE UNITS: ANCHORS SHALL BE LOCATED THROUGH THE JAMBS 2" FROM HEAD AND SILL THROUGH THE PRE-DRILLED HOLES, AND AT THE MIDPOINT.
 - MULLIED UNITS: ANCHORS SHALL BE LOCATED THROUGH THE JAMBS 6" FROM THE TOP AND BOTTOM CORNERS AND 18" MAX ON CENTER SPACING THEREAFTER; AND THROUGH THE HEAD AND SILL 6" ON EITHER SIDE OF EACH MULLION. SEAL OVER SILL ANCHOR AFTER INSTALLATION.
- THESE INSTRUCTIONS ADDRESS STRUCTURAL REQUIREMENTS ONLY. WINDOWS SHALL BE INSTALLED PER ASTM E2112 OR FMA/AAMA 100.
- SMALLER WINDOWS OF THE SAME CONSTRUCTION AND EQUAL OR LESSER DESIGN PRESSURES ARE COVERED BY THIS DRAWING.
- GLAZING TYPE, GLASS TYPE, AND GLASS THICKNESS ARE ESTABLISHED BY THE CERTIFICATION AND SHALL SATISFY ASTM E1300. GLAZING TYPE SHALL BE INSULATING GLASS.
- PRODUCTS LISTED IN TABLE 1 ARE NOT IMPACT RESISTANT. IF USED IN WIND-BORNE DEBRIS REGIONS, APPROVED PROTECTION DEVICES ARE REQUIRED.
- PRODUCT OR INSTALLATION IS NOT APPROVED FOR FLORIDA HIGH VELOCITY HURRICANE ZONE (HVHZ)

THIS DRAWING IS PROPRIETARY AND CONFIDENTIAL TO ATRIUM COMPANIES, INC. AND SHALL NOT BE REPRODUCED, COPIED, OR DISSEMINATED WITHOUT THE EXPRESSED WRITTEN PERMISSION OF ATRIUM COMPANIES, INC.



Title: ADW-08 8300/1300/3201/3000
DOUBLE HUNG SINGLE, TWIN, AND TRIPLE
FINLESS INSTALLATION INSTRUCTIONS

No.	Date	Revision Description	By	ECN #
--	----	-----	---	-----

Material (Type-Alloy-Temper): ----	Est. Area (in ²): NA	Tolerances: X.XX = ±X.XX X.XXX = ±X.XXX X.X' = ±X.X'	
Drawn By: JTS	Approved By: ---	Date: 30 OCTOBER 2008	Scale: 1:2
ECN# (Initial Issue): ECN-2008-1395DD	File Name: ADW-09 8300 DH INSTALLATION INSTRUCTIONS	Sheet Size: ANSI B	Sheet 1/1