

REVISIONS			
REV	DESCRIPTION	DATE	APPROVED
A	REVISED PER NEW REQUIREMENTS	03/18/2020	R.L.

NOTES:

1. THE PRODUCT SHOWN HEREIN IS DESIGNED AND MANUFACTURED TO COMPLY WITH REQUIREMENTS OF THE 2018 IBC AND 2018 IRC.
2. WOOD FRAMING AND MASONRY OPENING TO BE DESIGNED AND ANCHORED TO PROPERLY TRANSFER ALL LOADS TO STRUCTURE. FRAMING AND MASONRY OPENING IS THE RESPONSIBILITY OF THE ARCHITECT OR ENGINEER OF RECORD.
3. 1X BUCK OVER MASONRY/CONCRETE IS OPTIONAL.
4. WHERE SHIM OR BUCK THICKNESS IS LESS THAN 1-1/2" UNITS MUST BE ANCHORED THROUGH THE FRAME IN ACCORDANCE WITH MANUFACTURER'S PUBLISHED INSTALLATION INSTRUCTIONS. ANCHORS SHALL BE SECURELY FASTENED DIRECTLY INTO MASONRY, CONCRETE OR OTHER STRUCTURAL SUBSTRATE MATERIAL.
5. WHERE WOOD BUCK THICKNESS IS 1-1/2" OR GREATER, BUCK SHALL BE SECURELY FASTENED TO MASONRY, CONCRETE OR OTHER STRUCTURAL SUBSTRATE. UNITS MAY BE ANCHORED THROUGH FRAME TO SECURED WOOD BUCK IN ACCORDANCE WITH MANUFACTURER'S PUBLISHED INSTALLATION INSTRUCTIONS.
6. WHERE 1X BUCK IS NOT USED DISSIMILAR MATERIALS MUST BE SEPARATED WITH APPROVED COATING OR MEMBRANE. SELECTION OF COATING OR MEMBRANE IS THE RESPONSIBILITY OF THE ARCHITECT OR ENGINEER OF RECORD.
7. BUCKS SHALL EXTEND BEYOND UNIT FRAME INTERIOR FACE SO THAT FULL FRAME SUPPORT IS PROVIDED.
8. SHIM AS REQUIRED AT EACH ANCHOR LOCATION WITH LOAD BEARING SHIM. SHIM WHERE SPACE OF 1/16" OR GREATER OCCURS. MAXIMUM ALLOWABLE SHIM STACK TO BE 1/4".
9. SHIMS SHALL BE LOCATED, APPLIED AND MADE FROM MATERIALS AND THICKNESS CAPABLE OF SUSTAINING APPLICABLE LOADS.
10. WIND LOAD DURATION FACTOR Cd=1.6 WAS USED FOR WOOD ANCHOR CALCULATIONS.
11. FRAME MATERIAL: EXTRUDED ALUMINUM 6063-T5.
12. UNITS MUST BE GLAZED PER ASTM E1300-04/09, SEE SHEET 2 FOR GLASS DETAILS.
13. APPROVED IMPACT PROTECTIVE SYSTEM IS NOT REQUIRED FOR THIS PRODUCT IN WIND BORNE DEBRIS REGIONS.
14. FOR ANCHORING THROUGH FRAME INTO WOOD FRAMING OR 2X BUCK USE #10 WOOD SCREWS WITH SUFFICIENT LENGTH TO ACHIEVE A 1 1/4" MINIMUM EMBEDMENT INTO SUBSTRATE. LOCATE ANCHORS AS SHOWN IN ELEVATIONS AND INSTALLATION DETAILS.

15. FOR ANCHORING THROUGH FRAME INTO MASONRY/CONCRETE USE 3/16" TAPCONS WITH SUFFICIENT LENGTH TO ACHIEVE A 1 1/4" MINIMUM EMBEDMENT INTO SUBSTRATE WITH 2" MINIMUM EDGE DISTANCE. LOCATE ANCHORS AS SHOWN IN ELEVATIONS AND INSTALLATION DETAILS.
16. FOR ANCHORING THROUGH FRAME INTO METAL STRUCTURE USE #10 SMS OR SELF DRILLING SCREWS WITH SUFFICIENT LENGTH TO ACHIEVE 3 THREADS MINIMUM BEYOND STRUCTURE INTERIOR WALL. LOCATE ANCHORS AS SHOWN IN ELEVATIONS AND INSTALLATION DETAILS.
17. ALL FASTENERS TO BE CORROSION RESISTANT.
18. INSTALLATION ANCHORS SHALL BE INSTALLED IN ACCORDANCE WITH ANCHOR MANUFACTURER'S INSTALLATION INSTRUCTIONS AND ANCHORS SHALL NOT BE USED IN SUBSTRATES WITH STRENGTHS LESS THAN THE MINIMUM STRENGTH SPECIFIED BELOW:
  - A. WOOD: MINIMUM SPECIFIC GRAVITY OF G=0.42
  - B. CONCRETE: MINIMUM COMPRESSIVE STRENGTH OF 2,000 PSI.
  - C. MASONRY: HOLLOW/FILLED BLOCK PER ASTM C90 WITH Fm=2,000PSI MINIMUM.
  - D. METAL STRUCTURE: STEEL 18GA (.048") FY=33KSI/FU=52KSI OR ALUMINUM 6063-T5 FU=30KSI .125" THICK MINIMUM

SIGNED: 04/06/2020

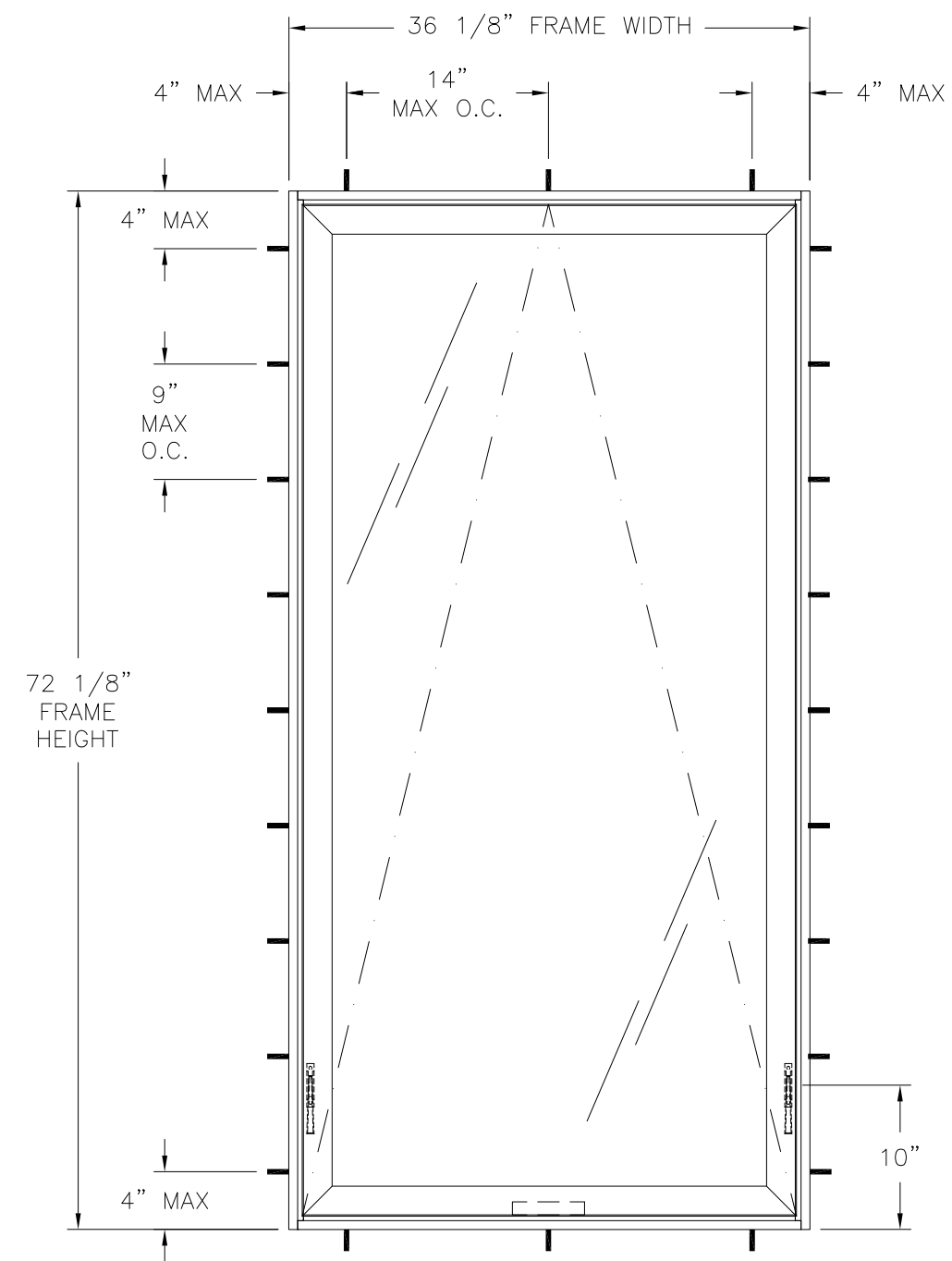
TABLE OF CONTENTS	
SHEET NO.	DESCRIPTION
1	NOTES
2	ELEVATION, GLAZING DETAIL AND COMPONENTS
3	CROSS SECTIONS
4 - 6	INSTALLATION DETAILS

<b>SOLAR INNOVATIONS, INC.</b> 31 ROBERTS RD. PINE GROVE, PA 17963		
G-2 INTERNATIONAL AWNING PROJECT OUT AT THE BOTTOM WINDOW IMPACT NOTES		
DRAWN: N.G.	DWG NO. 08-02663	REV A
SCALE NTS	DATE 03/26/15	SHEET 1 OF 6
L. ROBERTO LOMAS P.E. 1432 WOODFORD RD LEWISVILLE, NC 27023 434-688-0609 rllomas@lrlomaspe.com		

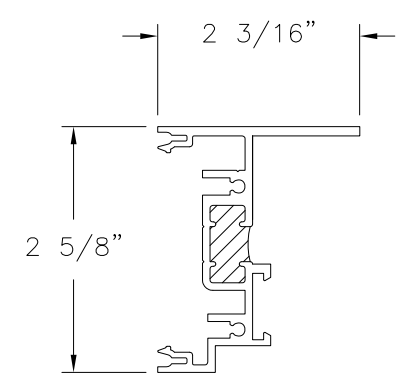
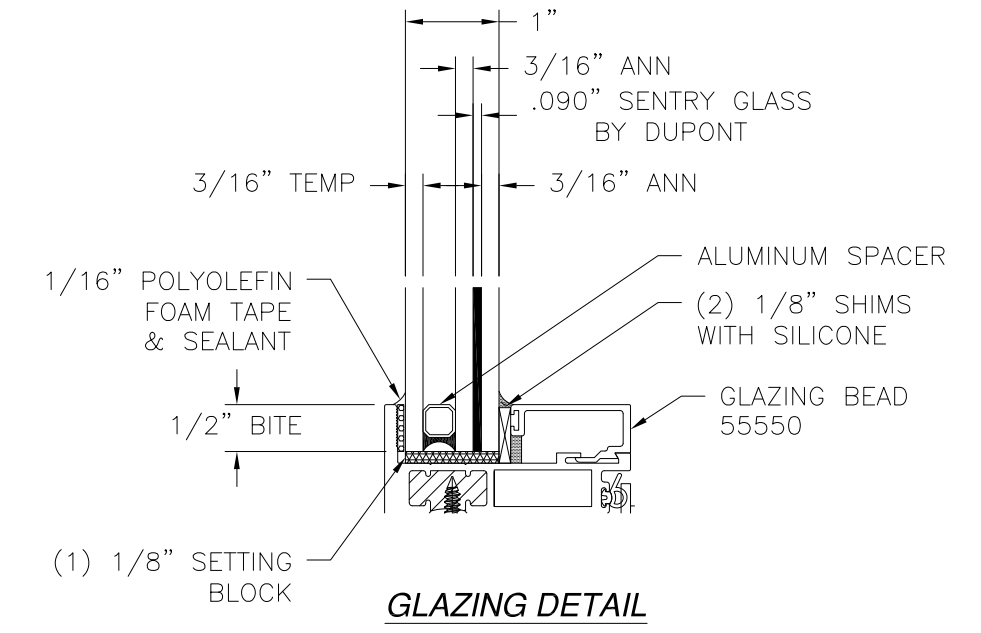


Luis R. Lomas P.E.  
TX No.: 101889

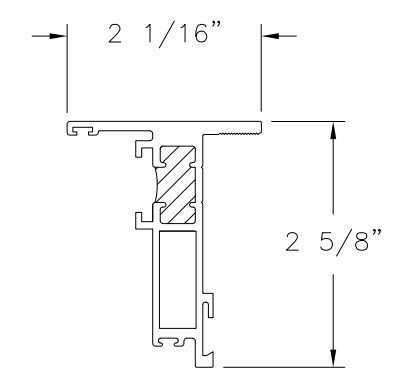
REVISIONS			
REV	DESCRIPTION	DATE	APPROVED
A	REVISED PER NEW REQUIREMENTS	03/18/2020	R.L.



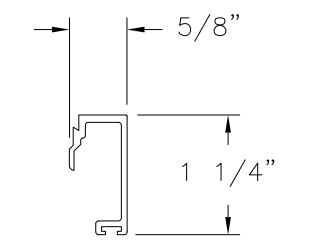
- NOTES:
1. SASH SIZE: 34 5/16" X 70 5/16"
  2. D.L.O.: 29 3/4" X 66"
  3. 1/2" X 1/4" WEEP HOLE LOCATED 6 1/2" AND 13 1/2" FROM SASH END AND 14 3/4" FROM RIGHT JAMB AT EXTERIOR SILL LEG.
  4. 1/4" DIAMETER WEEP HOLE LOCATED 7 1/2" FROM EACH END OF BOTTOM RAIL
  5. SINGLE HANDLE MULTI-POINT INTEGRATED LOCK SYSTEM



**FRAME**  
ALUMINUM 6063-T5 .100" THICK (S55548)



**SASH**  
ALUMINUM 6063-T5 .100" THICK (H14324)



**GLAZING BEAD**  
ALUMINUM 6063-T5 .062" THICK (S55550)

**G2 INTERNATIONAL AWNING WINDOW**  
EXTERIOR VIEW

DESIGN PRESSURE RATING	IMPACT RATING
±65.0PSF	LARGE AND SMALL MISSILE IMPACT

MISSILE LEVEL D, WIND ZONE 4

36 1/8" X 72 1/8" UNIT SHOWN. OTHER SIZES APPROVED AS LONG AS FRAME AREA DOES NOT EXCEED 18.09 FT<sup>2</sup>

**HARDWARE SCHEDULE**

A.	(1) SINGLE-HANDLE 3-POINT INTEGRATED LOCK SYSTEM, 10" FROM BOTTOM OF JAMBS
B.	METAL KEEPER AT STILES AT LOCK LOCATIONS
C.	SCISSORS WITH CLOSED CELL FOAM GASKET ROTO OPERATOR AT MIDSPAN OF SILL
D.	(4)-BAR HINGE AT TOP OF STILES/JAMBS

SIGNED: 04/06/2020

SOLAR INNOVATIONS, INC.  
31 ROBERTS RD.  
PINE GROVE, PA 17963

G-2 INTERNATIONAL AWNING  
PROJECT OUT AT THE BOTTOM WINDOW IMPACT  
ELEVATION, GLAZING DETAIL AND COMPONENTS

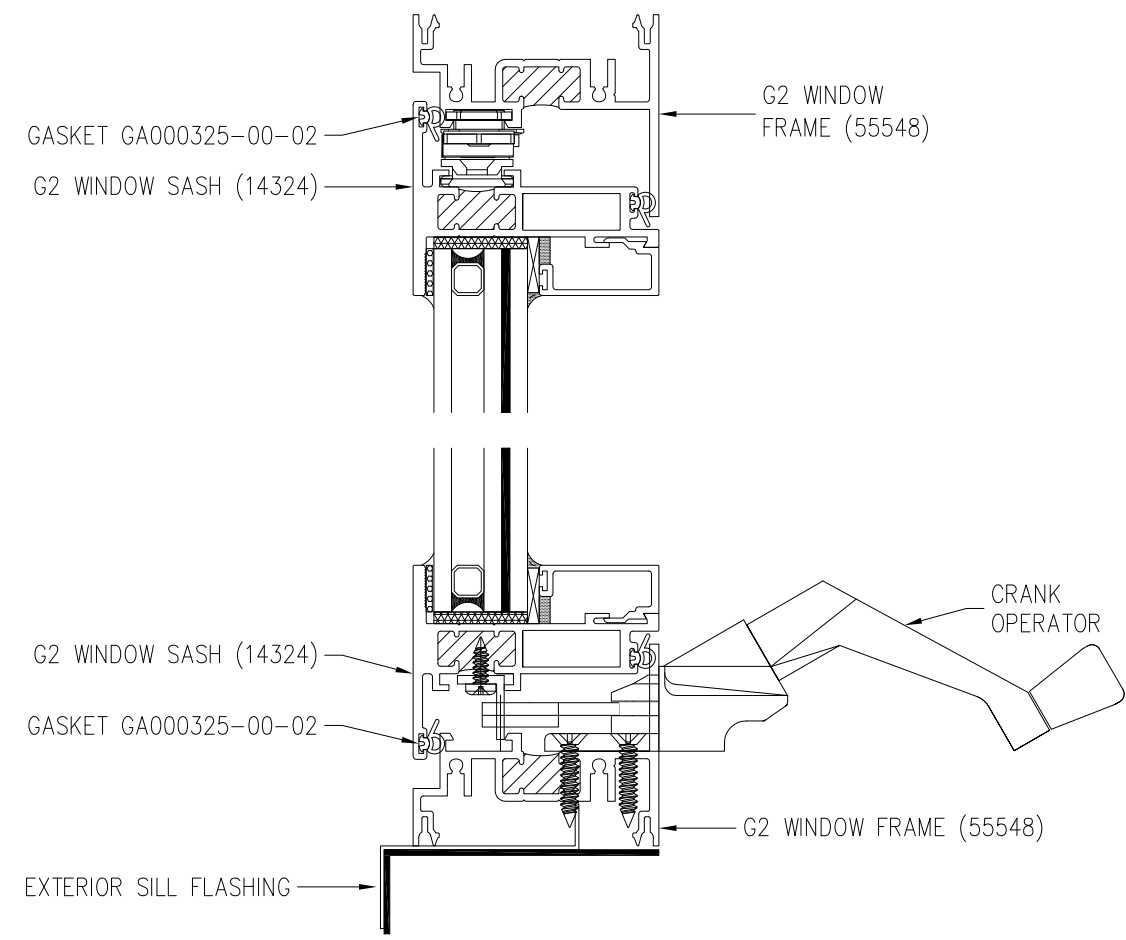
DRAWN: N.G.	DWG NO. 08-02663	REV A
SCALE NTS	DATE 03/26/15	SHEET 2 OF 6

L. ROBERTO LOMAS P.E.  
1432 WOODFORD RD LEWISVILLE, NC 27023  
434-688-0609 rllomas@rlomaspe.com

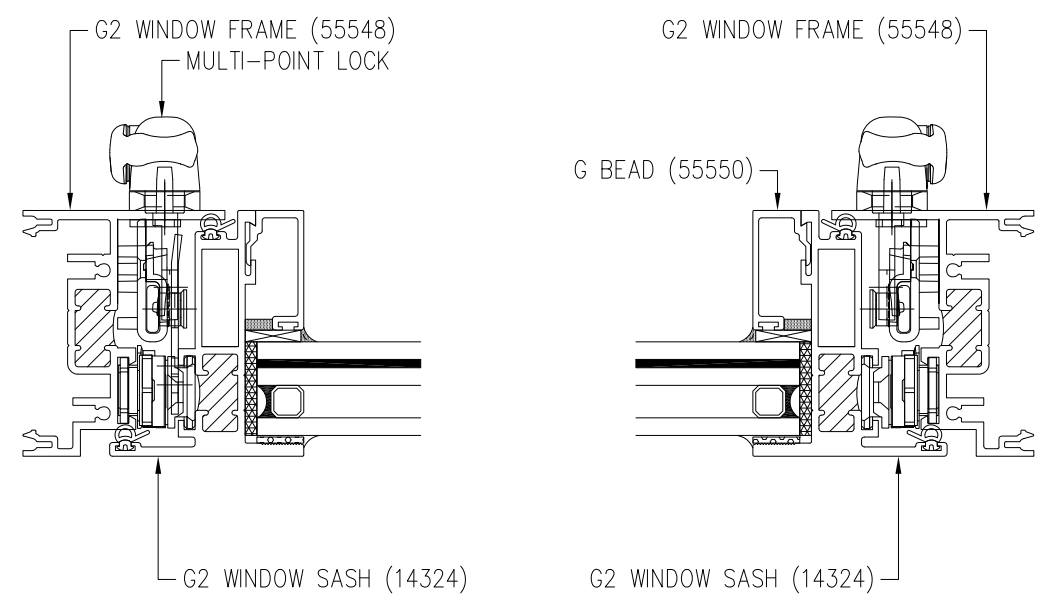


Luis R. Lomas P.E.  
TX No.: 101889

REVISIONS			
REV	DESCRIPTION	DATE	APPROVED
A	REVISED PER NEW REQUIREMENTS	03/18/2020	R.L.



VERTICAL CROSS SECTION



HORIZONTAL CROSS SECTION

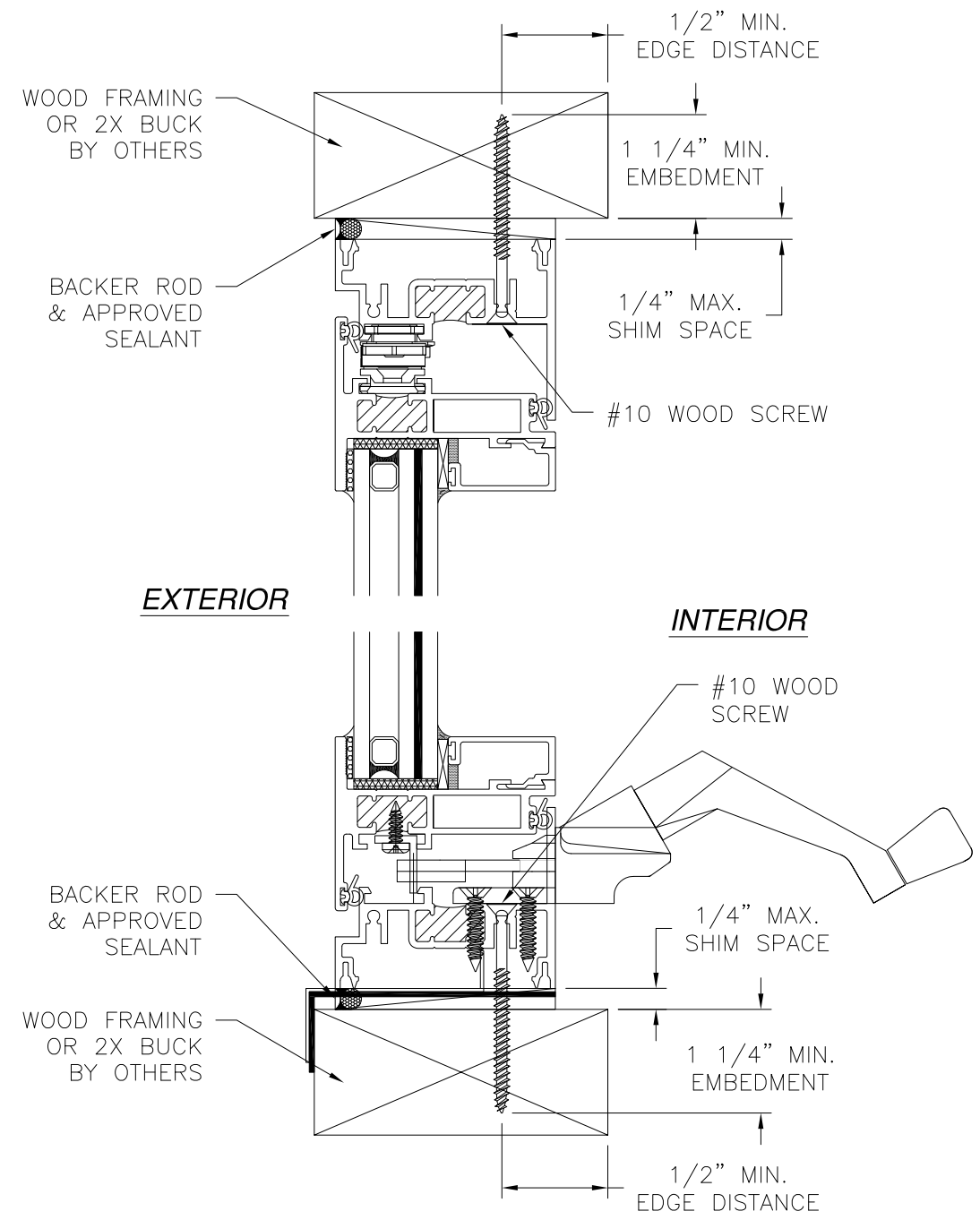
SIGNED: 04/06/2020

<b>SOLAR INNOVATIONS, INC.</b> 31 ROBERTS RD. PINE GROVE, PA 17963		
G-2 INTERNATIONAL AWNING PROJECT OUT AT THE BOTTOM WINDOW IMPACT CROSS SECTIONS		
DRAWN: N.G.	DWG NO. 08-02663	REV A
SCALE NTS	DATE 03/26/15	SHEET 3 OF 6
L. ROBERTO LOMAS P.E. 1432 WOODFORD RD LEWISVILLE, NC 27023 434-688-0609 rllomas@rlomaspe.com		

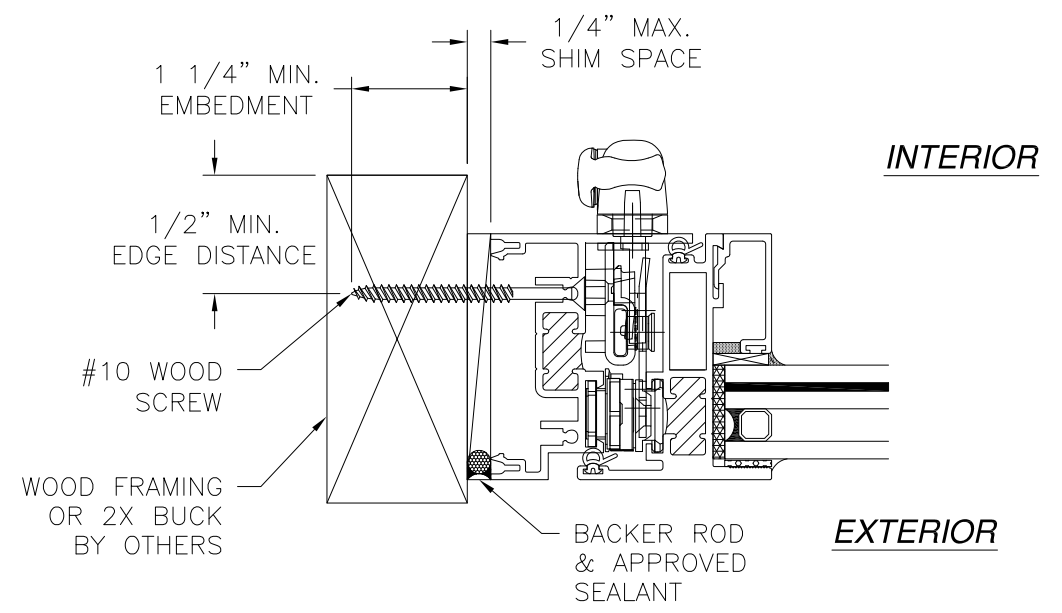


Luis R. Lomas P.E.  
 TX No.: 101889

REVISIONS			
REV	DESCRIPTION	DATE	APPROVED
A	REVISED PER NEW REQUIREMENTS	03/18/2020	R.L.



**VERTICAL CROSS SECTION**  
WOOD FRAMING OR 2X BUCK INSTALLATION



**JAMB INSTALLATION DETAIL**  
WOOD FRAMING OR 2X BUCK INSTALLATION

**NOTES:**  
 1. INTERIOR AND EXTERIOR FINISHES, BY OTHERS, NOT SHOWN FOR CLARITY.  
 2. PERIMETER AND JOINT SEALANT BY OTHERS TO BE DESIGNED IN ACCORDANCE WITH ASTM E2112

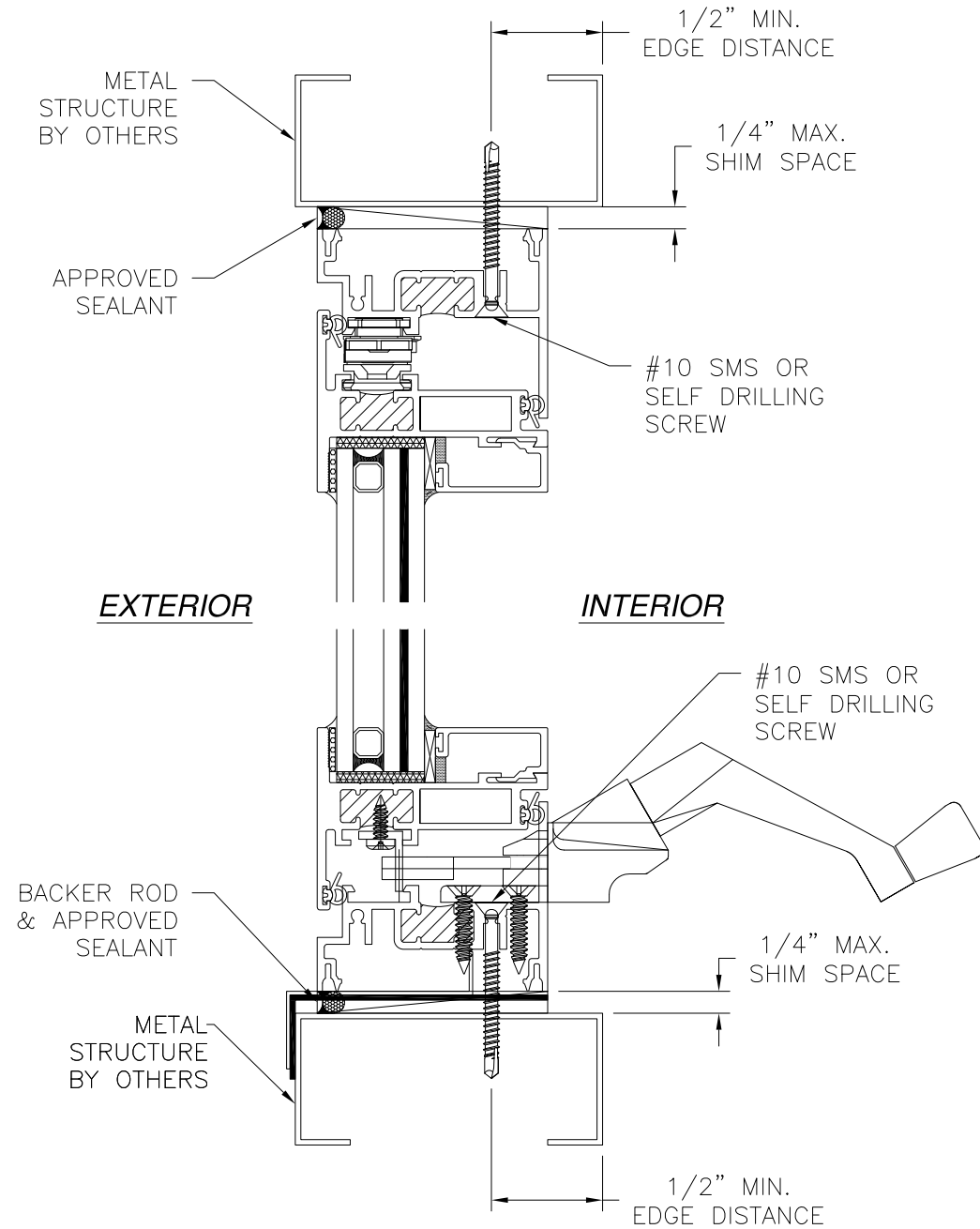
SIGNED: 04/06/2020

SOLAR INNOVATIONS, INC. 31 ROBERTS RD. PINE GROVE, PA 17963		
G-2 INTERNATIONAL AWNING PROJECT OUT AT THE BOTTOM WINDOW IMPACT INSTALLATION DETAILS		
DRAWN: N.G.	DWG NO. 08-02663	REV A
SCALE NTS	DATE 03/26/15	SHEET 4 OF 6
L. ROBERTO LOMAS P.E. 1432 WOODFORD RD LEWISVILLE, NC 27023 434-688-0609 rllomas@rlomaspe.com		

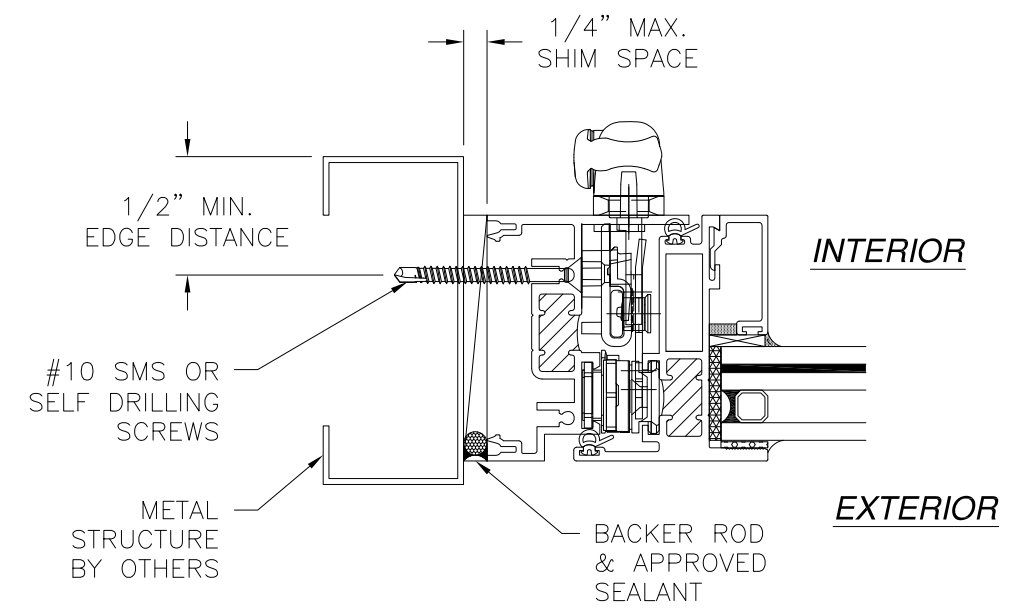


Luis R. Lomas P.E.  
TX No.: 101889

REVISIONS			
REV	DESCRIPTION	DATE	APPROVED
A	REVISED PER NEW REQUIREMENTS	03/18/2020	R.L.



**VERTICAL CROSS SECTION**  
METAL STRUCTURE INSTALLATION



**JAMB INSTALLATION DETAIL**  
METAL STRUCTURE INSTALLATION

**NOTES:**  
 1. INTERIOR AND EXTERIOR FINISHES, BY OTHERS, NOT SHOWN FOR CLARITY.  
 2. PERIMETER AND JOINT SEALANT BY OTHERS TO BE DESIGNED IN ACCORDANCE WITH ASTM E2112

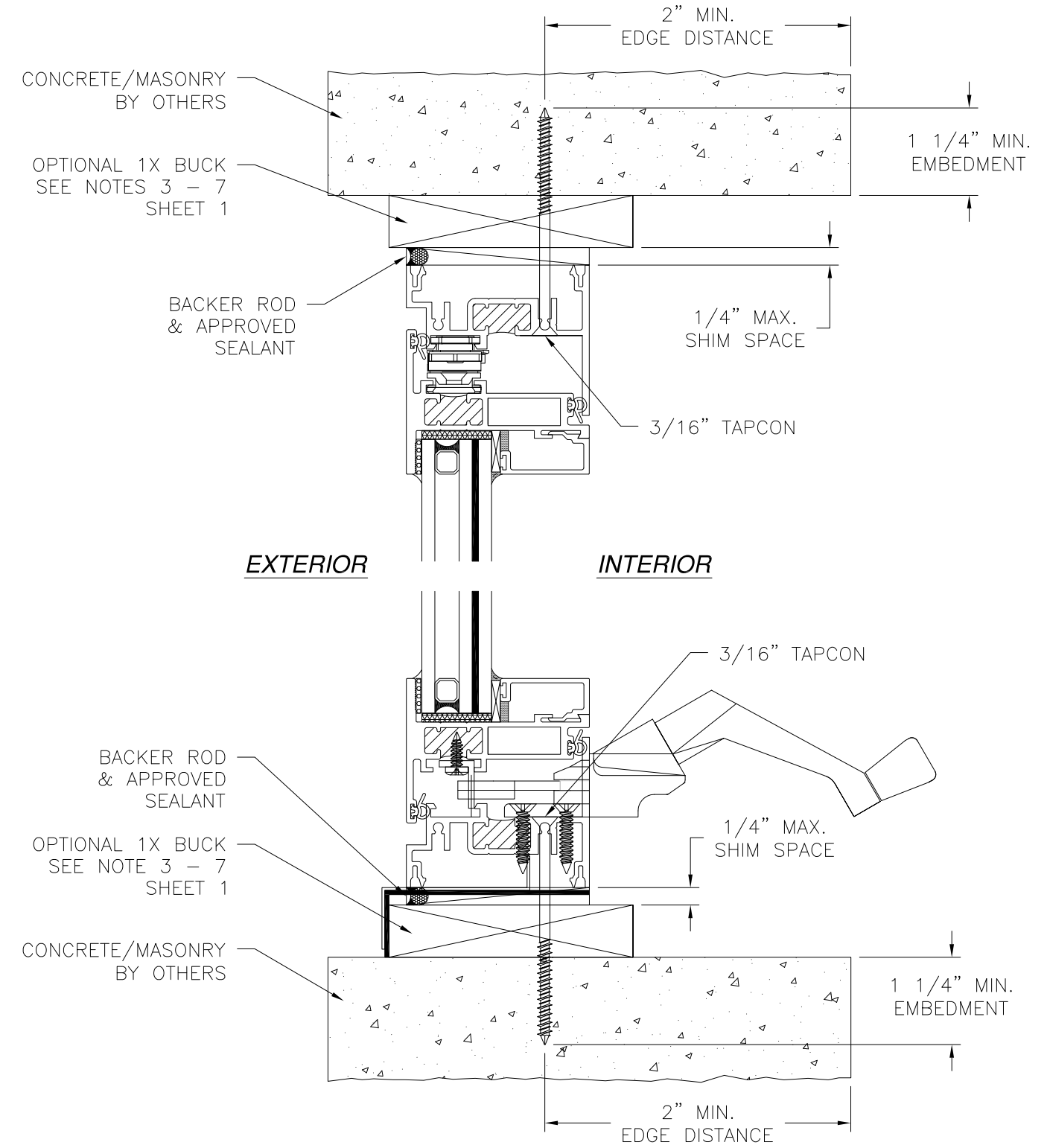
SIGNED: 04/06/2020

SOLAR INNOVATIONS, INC. 31 ROBERTS RD. PINE GROVE, PA 17963		
G-2 INTERNATIONAL AWNING PROJECT OUT AT THE BOTTOM WINDOW IMPACT INSTALLATION DETAILS		
DRAWN: N.G.	DWG NO. 08-02663	REV A
SCALE NTS	DATE 03/26/15	SHEET 5 OF 6
L. ROBERTO LOMAS P.E. 1432 WOODFORD RD LEWISVILLE, NC 27023 434-688-0609 rllomas@rlomaspe.com		

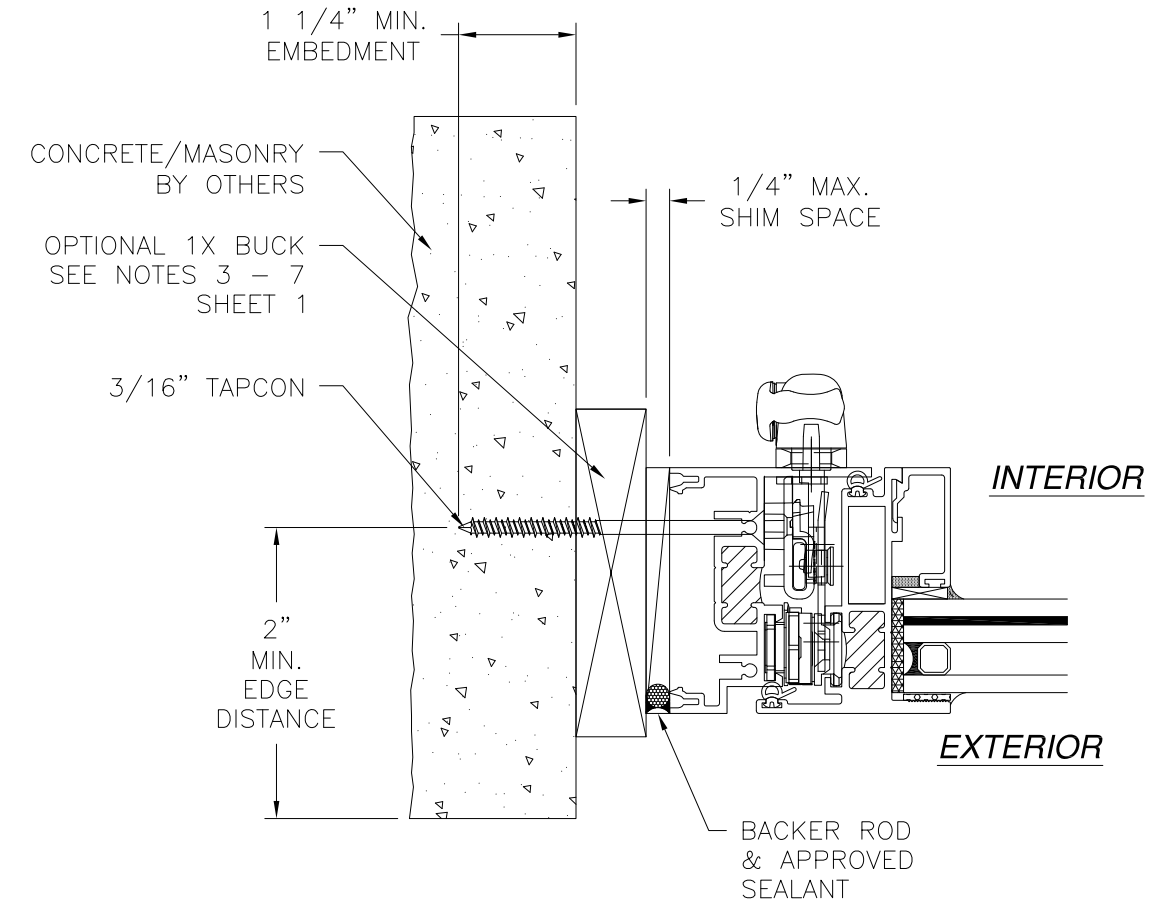


Luis R. Lomas P.E.  
TX No.: 101889

REVISIONS			
REV	DESCRIPTION	DATE	APPROVED
A	REVISED PER NEW REQUIREMENTS	03/18/2020	R.L.



**VERTICAL CROSS SECTION**  
CONCRETE/MASONRY INSTALLATION



**JAMB INSTALLATION DETAIL**  
CONCRETE/MASONRY INSTALLATION

**NOTES:**  
 1. INTERIOR AND EXTERIOR FINISHES, BY OTHERS, NOT SHOWN FOR CLARITY.  
 2. PERIMETER AND JOINT SEALANT BY OTHERS TO BE DESIGNED IN ACCORDANCE WITH ASTM E2112

SIGNED: 04/06/2020

SOLAR INNOVATIONS, INC. 31 ROBERTS RD. PINE GROVE, PA 17963		
G-2 INTERNATIONAL AWNING PROJECT OUT AT THE BOTTOM WINDOW IMPACT INSTALLATION DETAILS		
DRAWN: N.G.	DWG NO. 08-02663	REV A
SCALE NTS	DATE 03/26/15	SHEET 6 OF 6
L. ROBERTO LOMAS P.E. 1432 WOODFORD RD LEWISVILLE, NC 27023 434-688-0609 rllomas@rlomaspe.com		



Luis R. Lomas P.E.  
TX No.: 101889