

# ANDERSEN CORPORATION

## A-SERIES DOUBLE HUNG PG UPGRADE WINDOW (NON-IMPACT)



100 FOURTH AVE NORTH  
BAYPORT, MN 55003-1096  
PH: (651) 264-5150 FX: (651) 264-5485

**INSTALLATION NOTES:**

1. ONE (1) INSTALLATION ANCHOR IS REQUIRED AT EACH ANCHOR LOCATION SHOWN.
2. THE NUMBER OF INSTALLATION ANCHORS DEPICTED IS THE MINIMUM NUMBER OF ANCHORS TO BE USED FOR PRODUCT INSTALLATION OF THE MAXIMUM SIZE LISTED.
3. INSTALL INDIVIDUAL INSTALLATION ANCHORS WITHIN A TOLERANCE OF ±1/2 INCH THE DEPICTED LOCATION & SPACING IN THE ANCHOR LAYOUT DETAILS (I.E., WITHOUT CONSIDERATION OF TOLERANCES). TOLERANCES ARE NOT CUMULATIVE FROM ONE INSTALLATION ANCHOR TO THE NEXT.
4. SHIM AS REQUIRED AT EACH INSTALLATION ANCHOR WITH LOAD BEARING SHIM(S). MAXIMUM ALLOWABLE SHIM STACK TO BE 3/8 INCH. SHIM WHERE SPACE OF 1/16 INCH OR GREATER OCCURS. SHIM(S) SHALL BE CONSTRUCTED OF HIGH DENSITY PLASTIC OR BETTER.
5. **INSTALLATION CLIP:** FOR INSTALLATION INTO WOOD FRAMING USE TWO (2) #10 WOOD SCREWS PER LOCATION OF SUFFICIENT LENGTH TO ACHIEVE 1 1/2 INCH MINIMUM EMBEDMENT INTO WOOD SUBSTRATE.
6. **INSTALLATION CLIP:** FOR INSTALLATION INTO METAL STUD OR APPROVED MULLION USE TWO (2) #10-16 GR. 5 SELF-TAPPING SCREW PER LOCATION OF SUFFICIENT LENGTH TO ACHIEVE A MINIMUM OF 3 THREADS PENETRATION BEYOND METAL FRAME SUBSTRATE.
7. **INSTALLATION CLIP:** FOR INSTALLATION THROUGH 1X BUCK TO CONCRETE/MASONRY, OR DIRECTLY INTO CONCRETE/MASONRY, USE TWO (2) 3/16 INCH DIAMETER ITW TAPCONS OR ONE (1) 1/4" ITW TAPCON PER LOCATION OF SUFFICIENT LENGTH TO ACHIEVE 1 1/4 INCH MINIMUM EMBEDMENT. ANCHORS SHALL BE INSTALLED THROUGH CLIP SUCH THAT A MINIMUM 1 3/4" O.C. SPACING IS MAINTAINED.
8. MINIMUM EMBEDMENT AND EDGE DISTANCE EXCLUDE WALL FINISHES, INCLUDING BUT NOT LIMITED TO STUCCO, FOAM, BRICK VENEER, AND SIDING.
9. INSTALLATION ANCHORS AND ASSOCIATED HARDWARE MUST BE MADE OF CORROSION RESISTANT MATERIAL OR HAVE A CORROSION RESISTANT COATING.
10. FOR HOLLOW BLOCK AND GROUT FILLED BLOCK, DO NOT INSTALL INSTALLATION ANCHORS INTO MORTAR JOINTS. EDGE DISTANCE IS MEASURED FROM FREE EDGE OF BLOCK OR EDGE OF MORTAR JOINT INTO FACE SHELL OF BLOCK.
11. INSTALLATION ANCHORS SHALL BE INSTALLED IN ACCORDANCE WITH ANCHOR MANUFACTURER'S INSTALLATION INSTRUCTIONS, AND ANCHORS SHALL NOT BE USED IN SUBSTRATES WITH STRENGTHS LESS THAN THE MINIMUM STRENGTH SPECIFIED BY THE ANCHOR MANUFACTURER.
12. INSTALLATION ANCHOR CAPACITIES FOR PRODUCTS HEREIN ARE BASED ON SUBSTRATE MATERIALS WITH THE FOLLOWING PROPERTIES:
  - A. WOOD - MINIMUM SPECIFIC GRAVITY OF 0.42.
  - B. CONCRETE -MINIMUM COMPRESSIVE STRENGTH OF 3000 PSI.
  - C. GROUT-FILLED CMU- UNIT STRENGTH CONFORMS TO ASTM C-90 WITH MINIMUM COMPRESSIVE STRENGTH OF 2000 PSI AND GROUT CONFORMS TO ASTM C 476, MINIMUM GROUT COMPRESSIVE STRENGTH OF 2000 PSI.
  - D. HOLLOW BLOCK CMU - UNIT STRENGTH CONFORMS TO ASTM C-90 WITH MINIMUM COMPRESSIVE STRENGTH OF 2000 PSI.
  - E. STEEL - MINIMUM YIELD STRENGTH OF 33 KSI. MINIMUM WALL THICKNESS OF 35.9 MIL (0.0359" or 20 GAUGE). MIN. 1/2" EDGE DISTANCE.
  - F. ALUMINUM - MINIMUM ALLOY 6063-T5. MINIMUM WALL THICKNESS OF 0.078". MIN. 1/2" EDGE DISTANCE.

**GENERAL NOTES:**

1. THE PRODUCT SHOWN HEREIN IS DESIGNED AND MANUFACTURED TO COMPLY WITH THE 2018 INTERNATIONAL BUILDING CODE (IBC) AND INTERNATIONAL RESIDENTIAL CODE (IRC). ALL PRODUCTS HAVE BEEN EVALUATED ACCORDING TO THE FOLLOWING:
  - AAMA/WDMA/CSA 101/I.S.2/A440-17
2. ADEQUACY OF THE EXISTING STRUCTURAL CONCRETE/MASONRY, 2X FRAMING, AND METAL FRAMING AS A MAIN WIND FORCE RESISTING SYSTEM CAPABLE OF WITHSTANDING AND TRANSFERRING APPLIED PRODUCT LOADS TO THE FOUNDATION IS THE RESPONSIBILITY OF THE ENGINEER OR ARCHITECT OF RECORD FOR THE PROJECT OF INSTALLATION.
3. 1X AND 2X BUCKS (WHEN USED) SHALL BE DESIGNED AND ANCHORED TO PROPERLY TRANSFER ALL LOADS TO THE STRUCTURE. BUCK DESIGN AND INSTALLATION IS THE RESPONSIBILITY OF THE ENGINEER OR ARCHITECT OF RECORD FOR THE PROJECT OF INSTALLATION.
4. THE INSTALLATION DETAILS DESCRIBED HEREIN ARE GENERIC AND MAY NOT REFLECT ACTUAL CONDITIONS FOR A SPECIFIC SITE. IF SITE CONDITIONS CAUSE INSTALLATION TO DEVIATE FROM THE REQUIREMENTS DETAILED HEREIN, A LICENSED ENGINEER OR ARCHITECT SHALL PREPARE SITE SPECIFIC DOCUMENTS FOR USE WITH THIS DOCUMENT.
5. APPROVED IMPACT PROTECTIVE SYSTEM **IS REQUIRED** ON THIS PRODUCT IN AREAS REQUIRING IMPACT RESISTANCE.
6. WINDOW FRAME MATERIAL: PONDEROSA PINE
7. CLADDING MATERIAL: FIBREX® AND FIBERGLASS
8. IN ACCORDANCE WITH CHAPTER 23 OF THE IBC/IRC, WOOD COMPONENTS SHALL HAVE BEEN PRESERVATIVE TREATED OR SHALL BE OF A DURABLE SPECIES.
9. GLASS MEETS THE REQUIREMENTS OF ASTM E 1300 GLASS CHARTS. SEE SHEET 4 FOR GLAZING DETAIL.

TABLE OF CONTENTS	
SHEET	SHEET DESCRIPTION
1	INSTALLATION & GENERAL NOTES
2	ELEVATION & ANCHOR LAYOUTS
3	VERTICAL SECTIONS
4	HORIZONTAL SECTIONS & GLAZING OPTIONS
5	BILL OF MATERIALS & COMPONENTS
6	COMPONENTS

OVERALL SIZE		DESIGN PRESSURE	MISSILE IMPACT RATING
WIDTH	HEIGHT		
47 1/4"	95 1/4"	+70/- 70 PSF	NON-IMPACT

TITLE: A-SERIES DOUBLE HUNG PG UPGRADE WINDOW (NON-IMPACT)

PREPARED BY: INSTALLATION & GENERAL NOTES

BUILDING DROPS, INC.  
398 E. DANIA BEACH BLVD., STE. 338  
DANIA BEACH, FL 33004  
PH: (954) 399-8478  
FAX: (954) 744-4738  
WEB: www.buildingdrops.com

REMARKS	BY	DATE

THE INSTALLATION DETAILS DESCRIBED HEREIN ARE GENERIC AND MAY NOT REFLECT ACTUAL CONDITIONS FOR A SPECIFIC SITE. IF SITE CONDITIONS CAUSE INSTALLATION TO DEVIATE FROM THE REQUIREMENTS DETAILED HEREIN, A LICENSED ENGINEER OR ARCHITECT SHALL PREPARE SITE SPECIFIC DOCUMENTS FOR USE WITH THIS DOCUMENT.



HERMES F. NORERO, P.E.  
TEXAS P.E. No 118471  
BUILDING DROPS, INC  
398 E. DANIA BEACH BLVD. # 338  
DANIA BEACH, FL 33004  
TBPE FIRM No. 13734

DATE: **06.30.22**

DWG. BY: <b>SH</b>	CHK. BY: <b>HFN</b>
--------------------	---------------------

SCALE: **NTS**

DWG. #: **AWD305**

SHEET

1

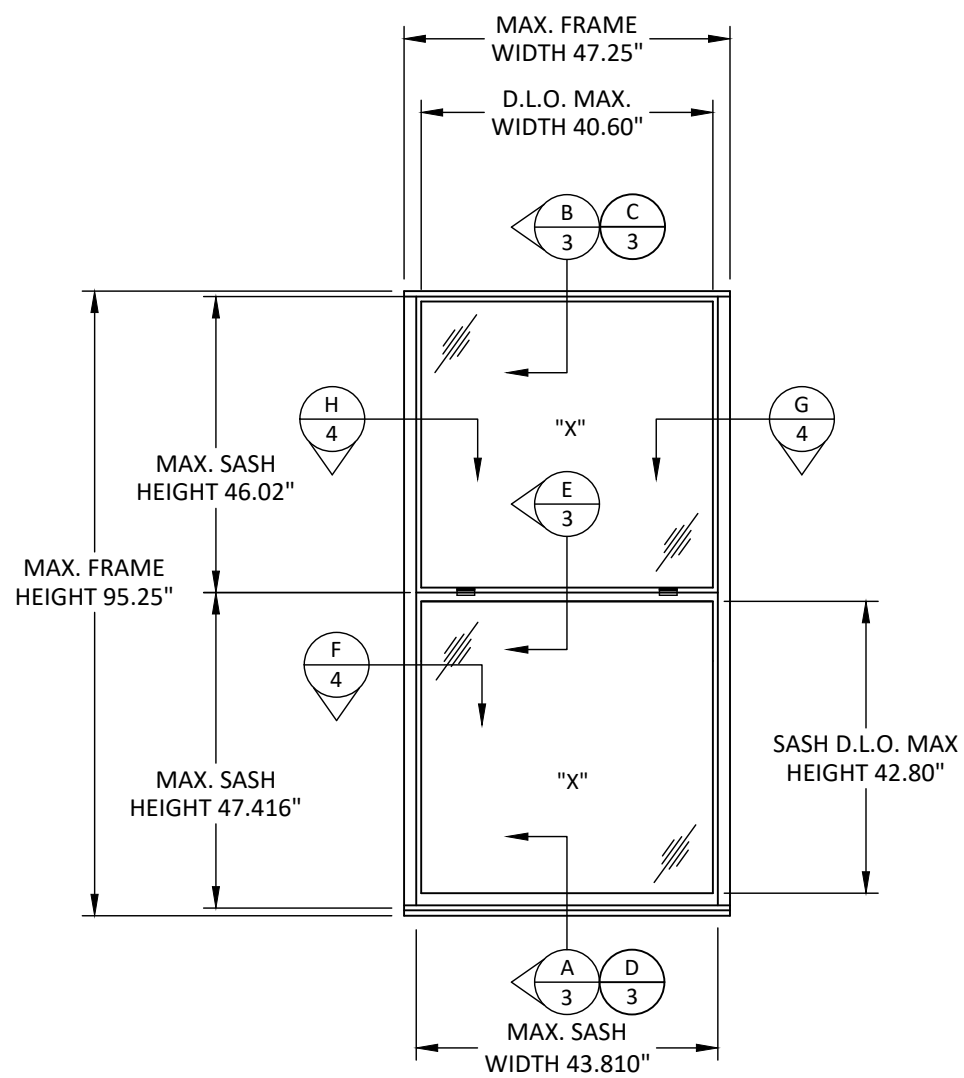
OF 6

9/6/2022 4:46 PM  
s:\projects\andersen windows\tdi-22-0251 - tdi submittal - a-series pg upgrade windows\dwgs\1-a-series pg upgrade window\awd305.dwg

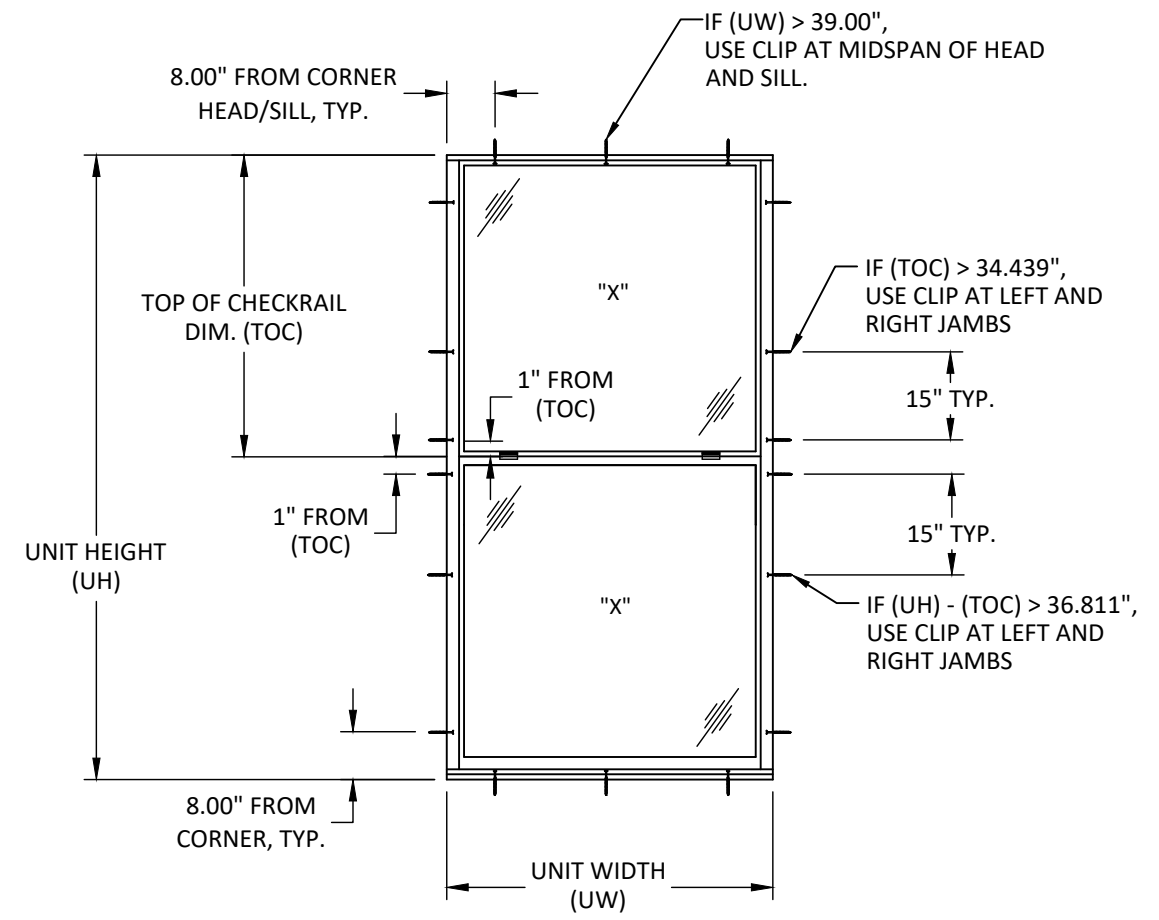
9/6/2022 4:46 PM  
s:\projects\andersen windows\ltdi-22-0251 - tdi submittal - a-series pg upgrade windows\dwg\ltdi-22-0251 - a-series pg upgrade window\awd305.dwg



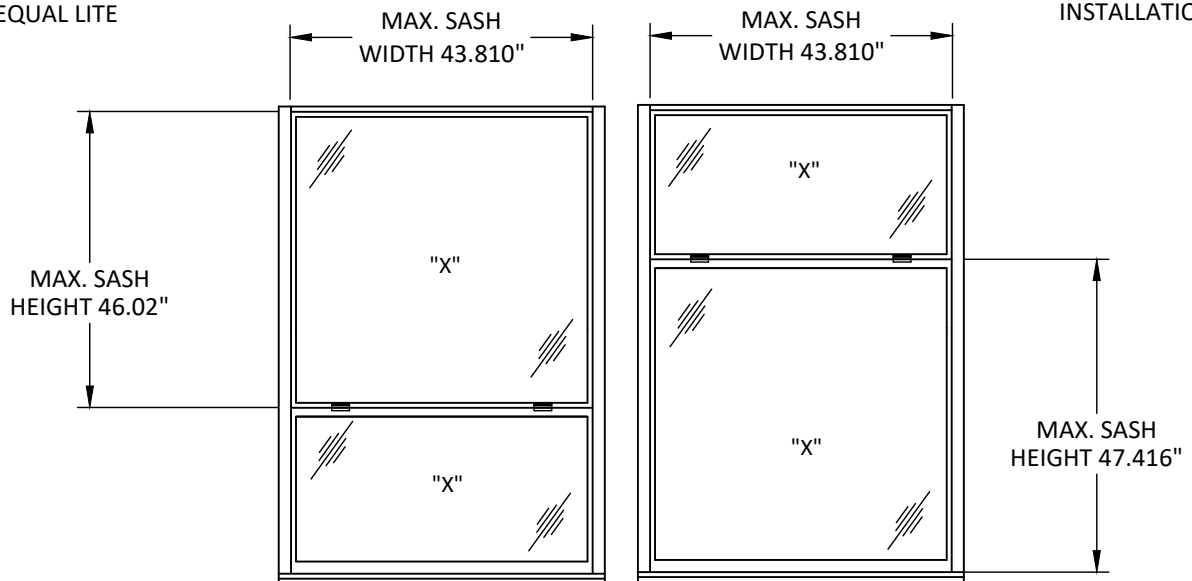
**ANDERSEN**  
WINDOWS & DOORS  
100 FOURTH AVE NORTH  
BAYPORT, MN 55003-1096  
PH: (651) 264-5150 FX: (651) 264-5485



**TYPICAL ELEVATION**  
EQUAL LITE



**ANCHOR LAYOUT**  
INSTALLATION CLIPS



**TYPICAL ELEVATION**  
UNEQUAL LITE

ANCHOR LEGEND	
—	INSTALLATION CLIP LOCATION.

NOTE: COTTAGE AND REVERSE COTTAGE CONFIGURATIONS ARE QUALIFIED SUCH THAT MAXIMUM SASH DIMENSIONS DO NOT EXCEED THOSE SHOWN.

TITLE: A-SERIES DOUBLE HUNG  
PG UPGRADE WINDOW  
(NON-IMPACT)  
ELEVATIONS &  
ANCHOR LAYOUT

PREPARED BY: **BD** BUILDING DROPS  
BUILDING DROPS, INC.  
398 E. DANIA BEACH BLVD., STE. 338  
DANIA BEACH, FL 33004  
PH: (954) 399-8478  
FAX: (954) 744-4738  
WEB: www.buildingdrops.com

REMARKS	BY	DATE

THE INSTALLATION DETAILS DESCRIBED HEREIN ARE GENERIC AND MAY NOT REFLECT ACTUAL CONDITIONS FOR A SPECIFIC SITE. IF SITE CONDITIONS CAUSE INSTALLATION TO DEVIATE FROM THE REQUIREMENTS DETAILED HEREIN, A LICENSED ENGINEER OR ARCHITECT SHALL PREPARE SITE SPECIFIC DOCUMENTS FOR USE WITH THIS DOCUMENT.

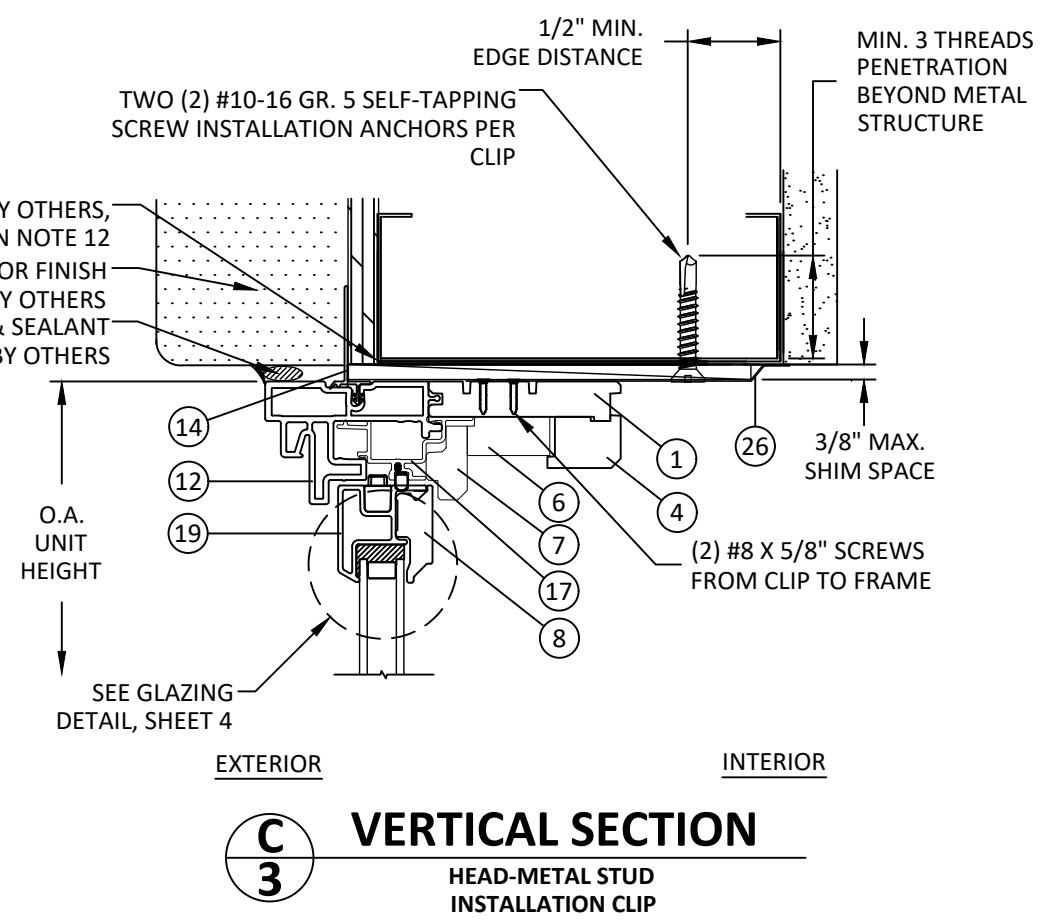
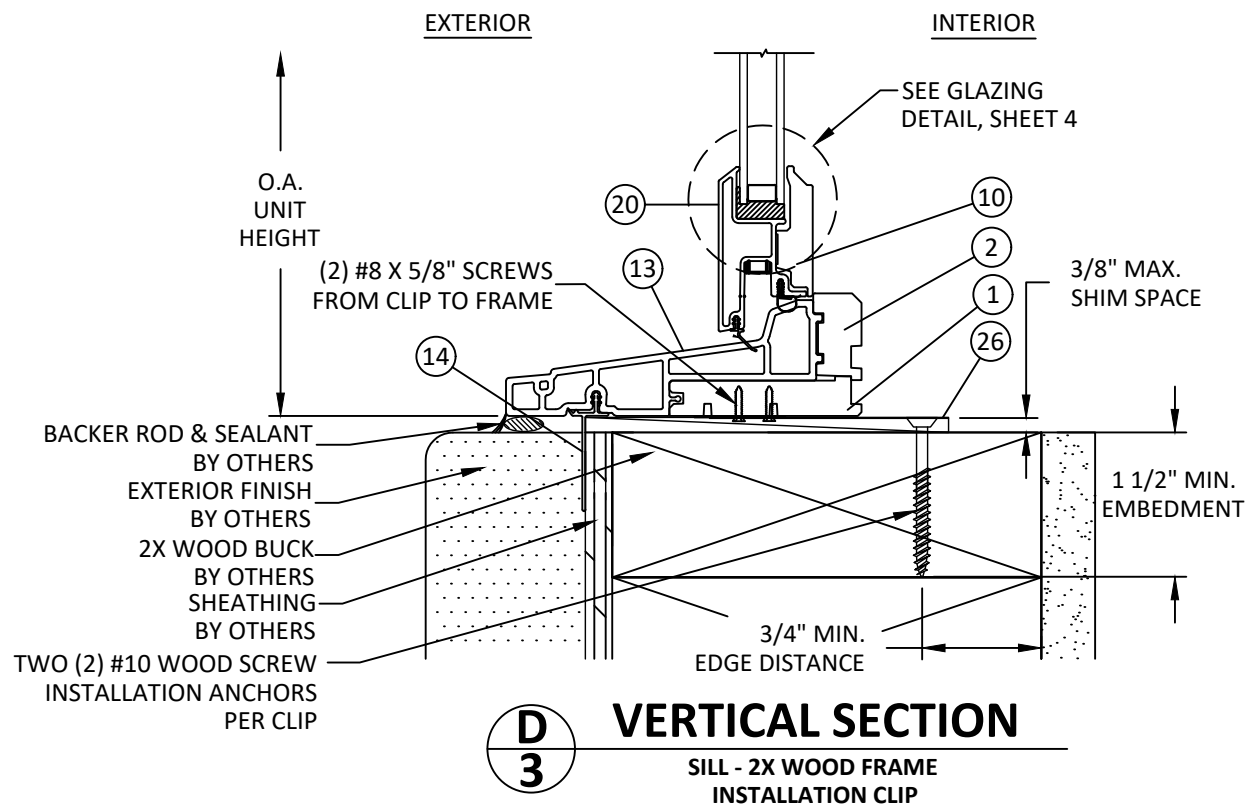
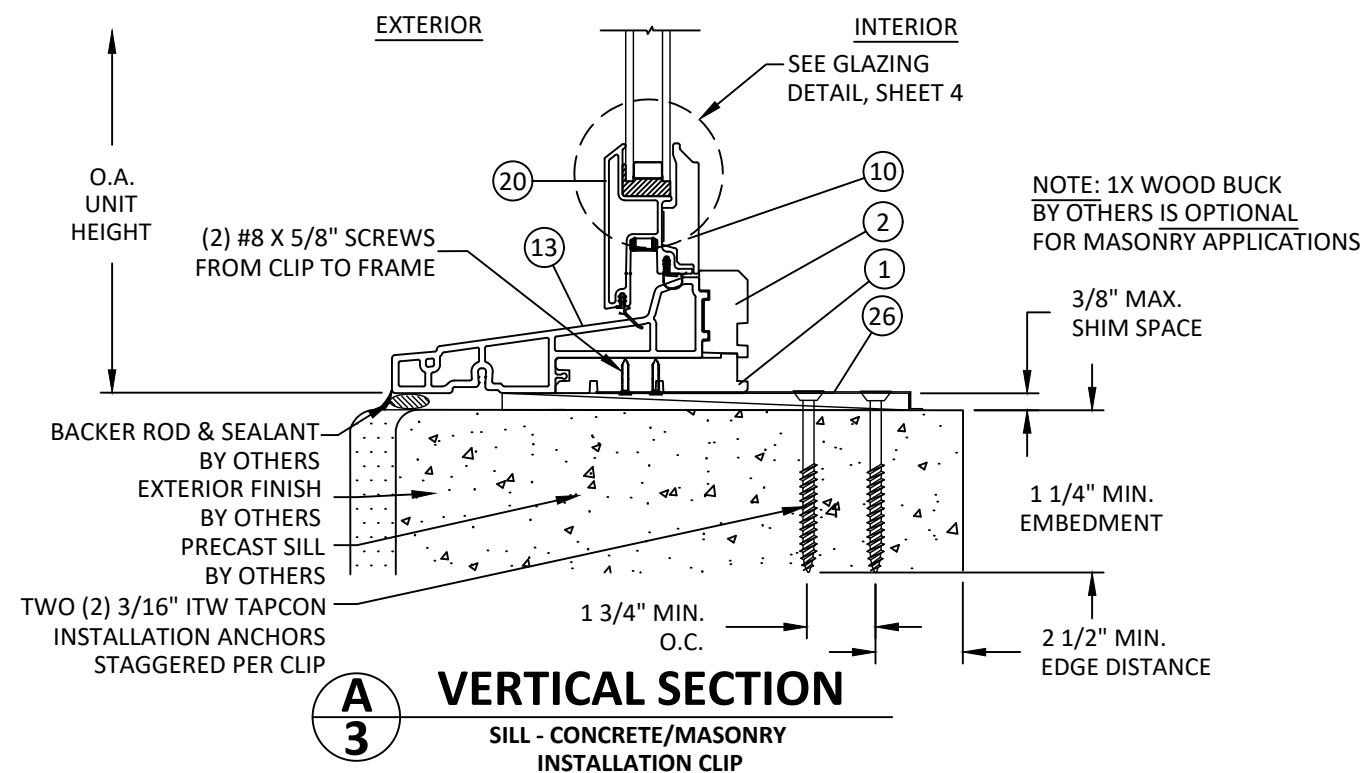
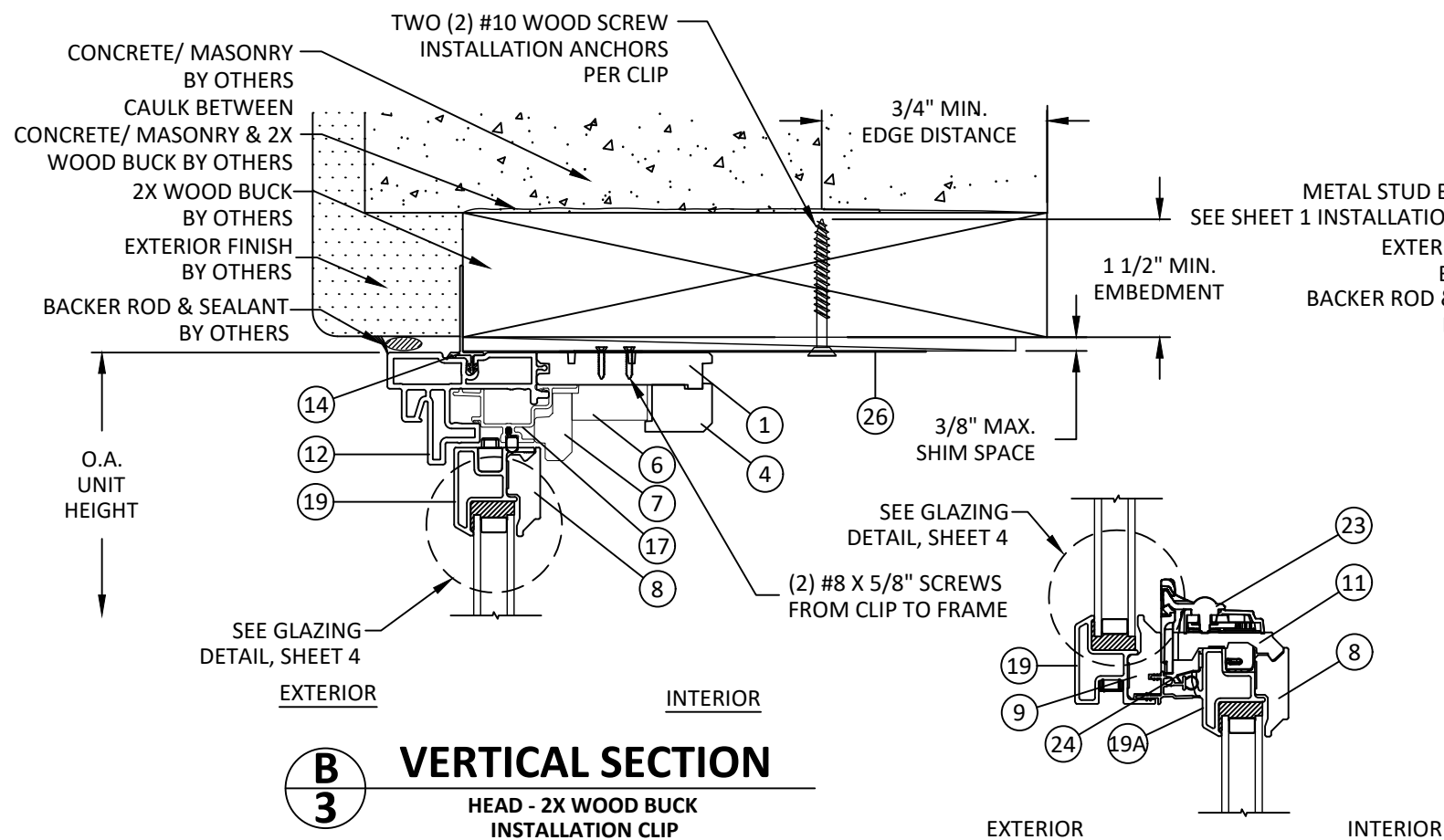


HERMES F. NORERO, P.E.  
TEXAS P.E. No 118471  
BUILDING DROPS, INC  
398 E. DANIA BEACH BLVD. # 338  
DANIA BEACH, FL 33004  
TBPE FIRM No. 13734

DATE:	06.30.22	
DWG. BY:	SH	CHK. BY: HFN
SCALE:	NTS	
DWG. #:	AWD305	

SHEET  
**2**  
OF 6

9/6/2022 4:46 PM  
 s:\projects\andersen windows\tdi-22-0251 - tdi submittal - a-series pg upgrade windows\tdi-series double hung pg upgrade window\awd305.dwg



100 FOURTH AVE NORTH  
BAYPORT, MN 55003-1096  
PH: (651) 264-5150 FX: (651) 264-5485

TITLE: A-SERIES DOUBLE HUNG  
PG UPGRADE WINDOW  
(NON-IMPACT)

VERTICAL SECTIONS

PREPARED BY: **BD**  
BUILDING DROPS

**BUILDING DROPS, INC.**  
398 E. DANIA BEACH BLVD., STE. 338  
DANIA BEACH, FL 33004  
PH: (954) 399-8478  
FAX: (954) 744-4738  
WEB: www.buildingdrops.com

REMARKS	BY	DATE

THE INSTALLATION DETAILS DESCRIBED HEREIN ARE GENERIC AND MAY NOT REFLECT ACTUAL CONDITIONS FOR A SPECIFIC SITE. IF SITE CONDITIONS CAUSE INSTALLATION TO DEVIATE FROM THE REQUIREMENTS DETAILED HEREIN, A LICENSED ENGINEER OR ARCHITECT SHALL PREPARE SITE SPECIFIC DOCUMENTS FOR USE WITH THIS DOCUMENT.



HERMES F. NORERO, P.E.  
TEXAS P.E. No. 118471  
BUILDING DROPS, INC  
398 E. DANIA BEACH BLVD. # 338  
DANIA BEACH, FL 33004  
TBPE FIRM No. 13734

DATE: **06.30.22**

DWG. BY: **SH**      CHK. BY: **HFN**

SCALE: **NTS**

DWG. #: **AWD305**

SHEET

**3**

9/6/2022 4:46 PM  
s:\projects\andersen windows\tdi-22-0251 - tdi submittal - a-series pg upgrade windows\dwg\pg upgrade window\awd305.dwg



100 FOURTH AVE NORTH  
BAYPORT, MN 55003-1096  
PH: (651) 264-5150 FX: (651) 264-5485

TITLE: A-SERIES DOUBLE HUNG  
PG UPGRADE WINDOW  
(NON-IMPACT)  
HORIZONTAL SECTIONS &  
GLAZING DETAIL

PREPARED BY: **BD** BUILDING DROPS  
BUILDING DROPS, INC.  
398 E. DANIA BEACH BLVD., STE. 338  
DANIA BEACH, FL 33004  
PH: (954) 399-8478  
FAX: (954) 744-4738  
WEB: www.buildingdrops.com

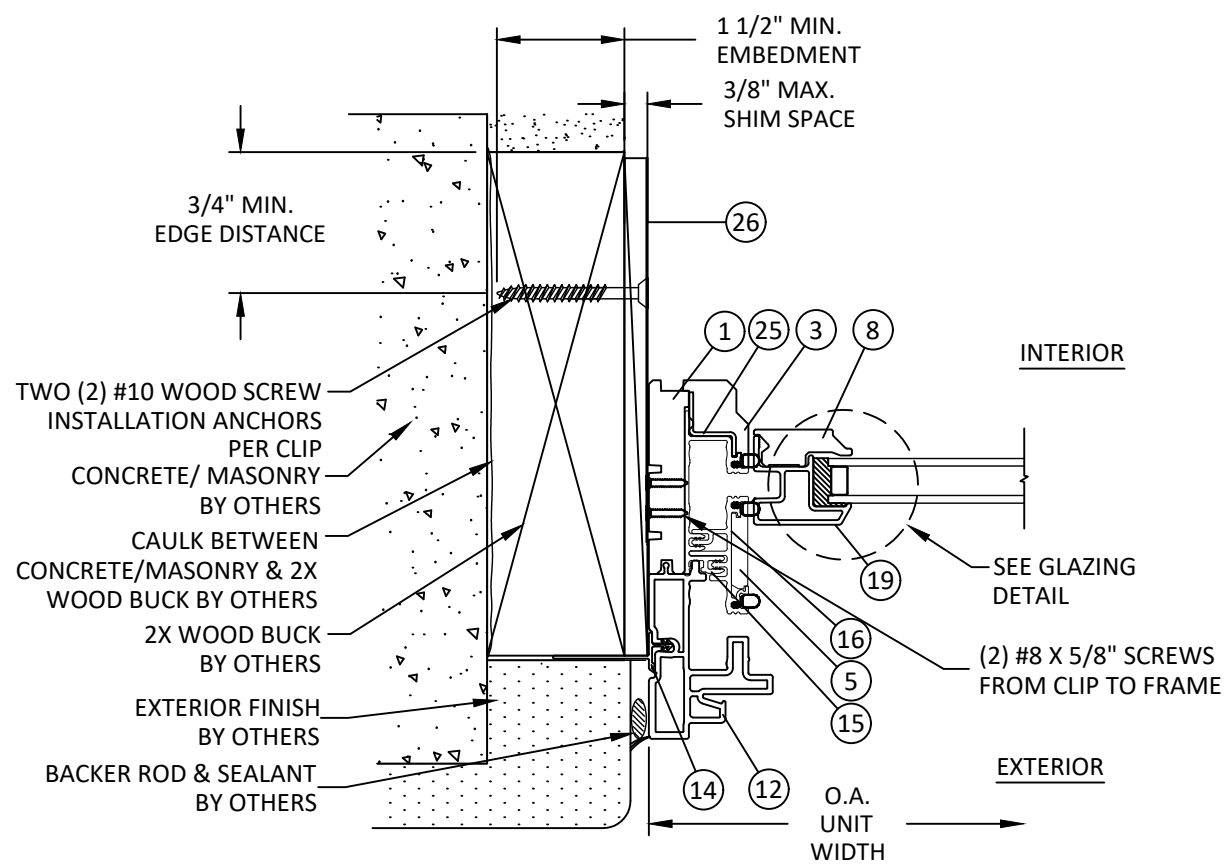
REMARKS	BY	DATE

THE INSTALLATION DETAILS DESCRIBED HEREIN ARE GENERIC AND MAY NOT REFLECT ACTUAL CONDITIONS FOR A SPECIFIC SITE. IF SITE CONDITIONS CAUSE INSTALLATION TO DEVIATE FROM THE REQUIREMENTS DETAILED HEREIN, A LICENSED ENGINEER OR ARCHITECT SHALL PREPARE SITE SPECIFIC DOCUMENTS FOR USE WITH THIS DOCUMENT.

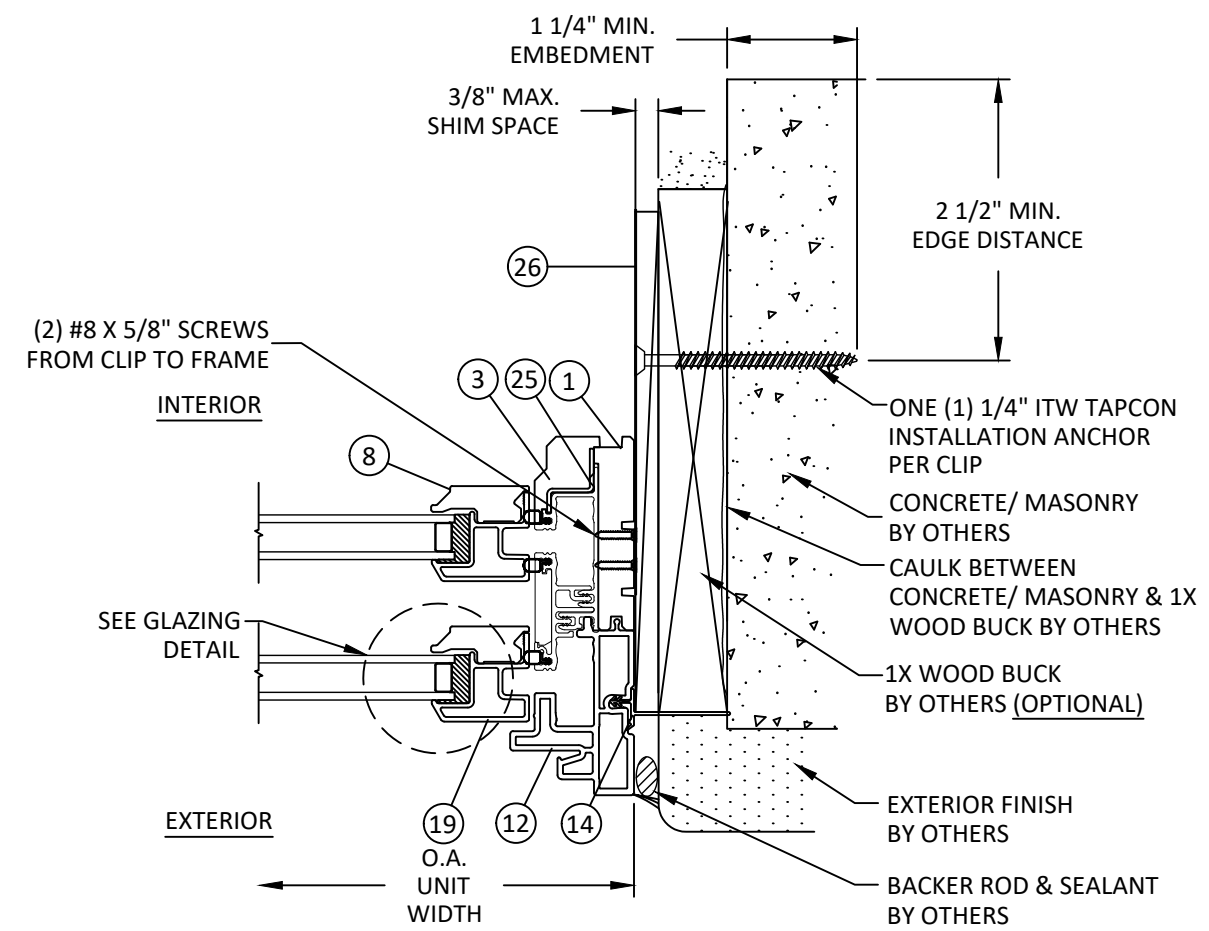


HERMES F. NORERO, P.E.  
TEXAS P.E. No 118471  
BUILDING DROPS, INC  
398 E. DANIA BEACH BLVD. # 338  
DANIA BEACH, FL 33004  
TBPE FIRM No. 13734

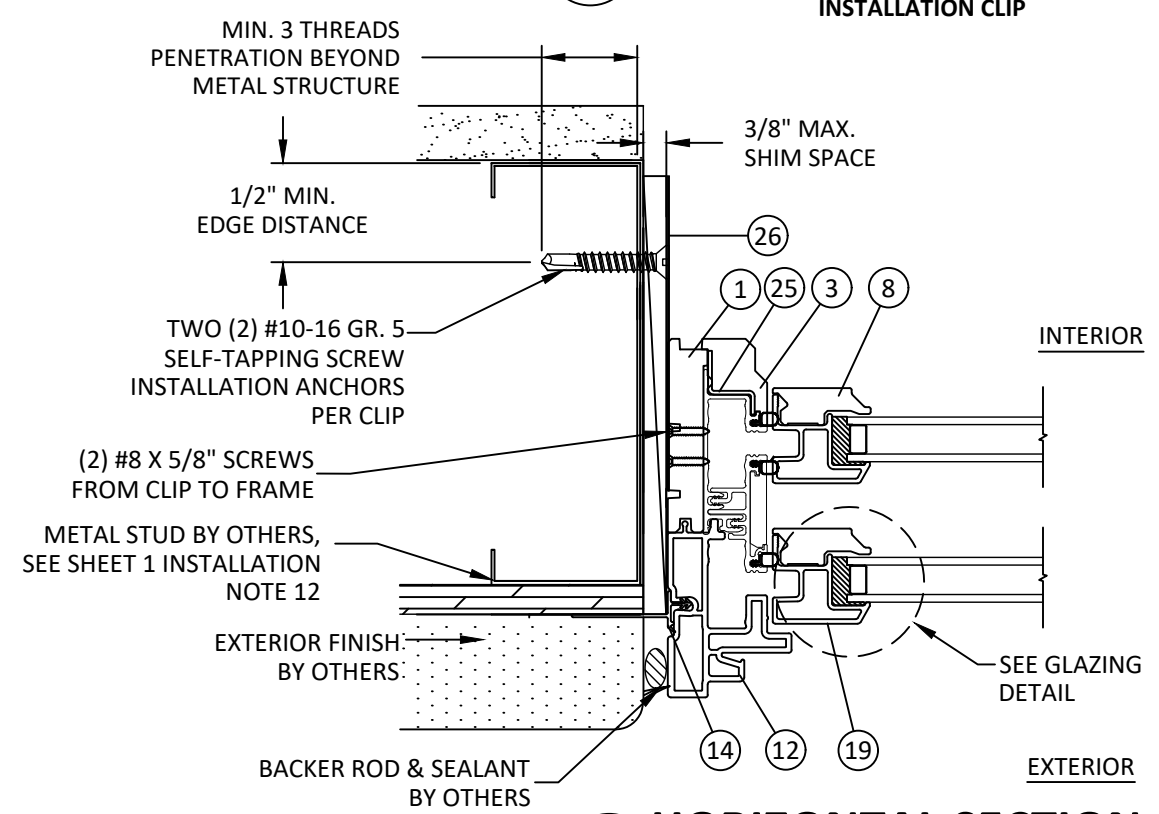
DATE:	06.30.22	
DWG. BY:	SH	CHK. BY: HFN
SCALE:	NTS	
DWG. #:	AWD305	
SHEET	4	



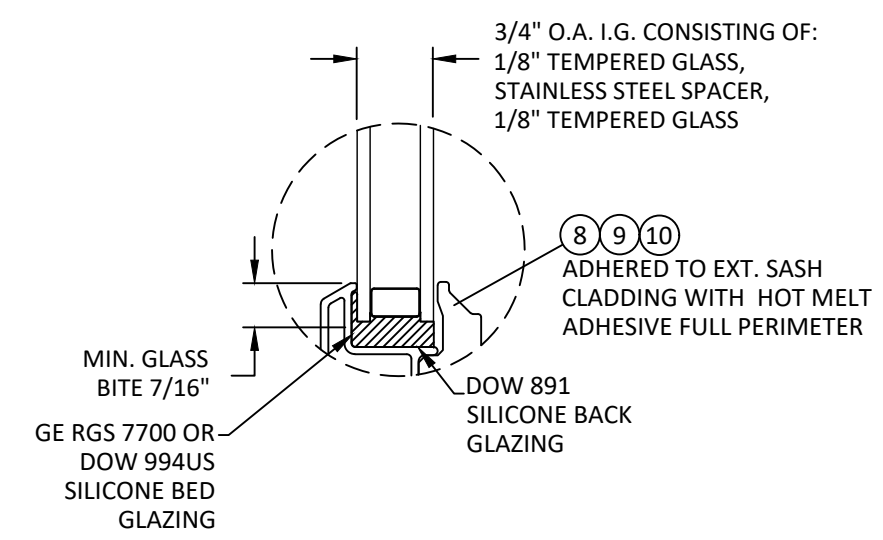
**F**  
**4** HORIZONTAL SECTION  
JAMB - 2X WOOD BUCK  
INSTALLATION CLIP



**G**  
**4** HORIZONTAL SECTION  
JAMB - CONCRETE/MASONRY  
INSTALLATION CLIP



**H**  
**4** HORIZONTAL SECTION  
JAMB-METAL STUD  
INSTALLATION CLIP



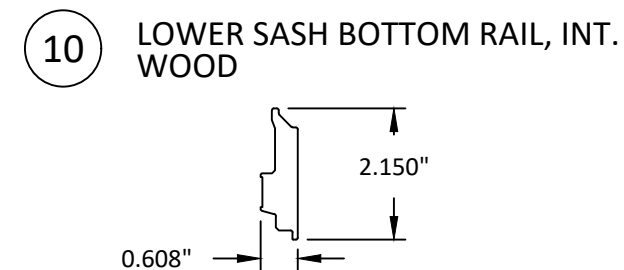
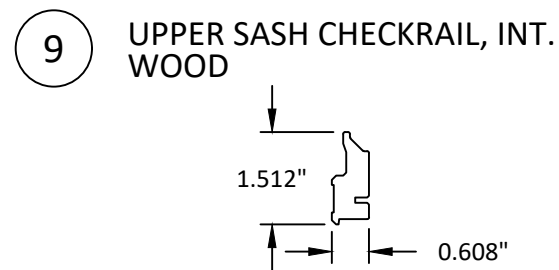
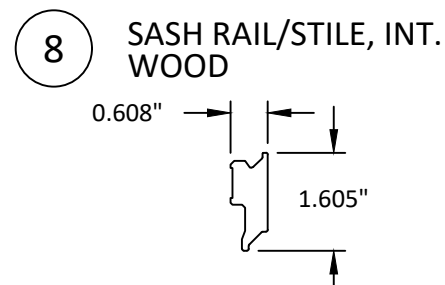
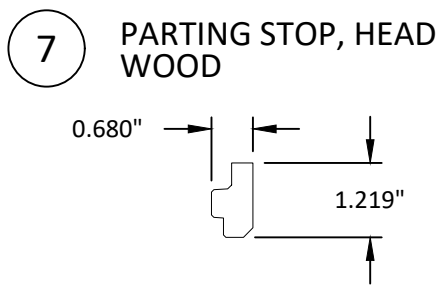
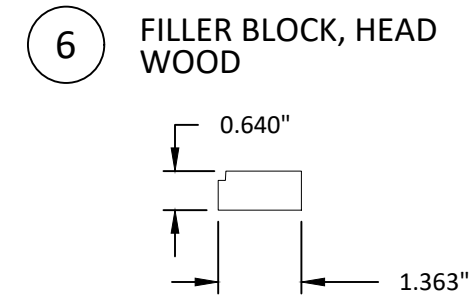
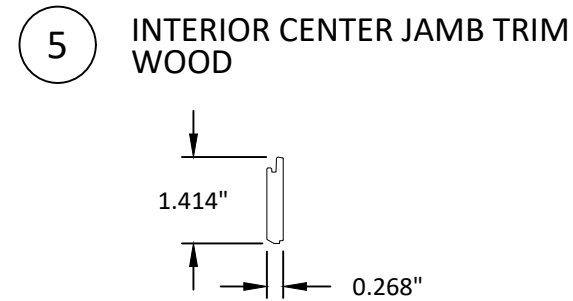
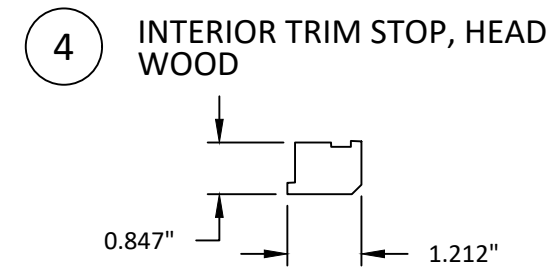
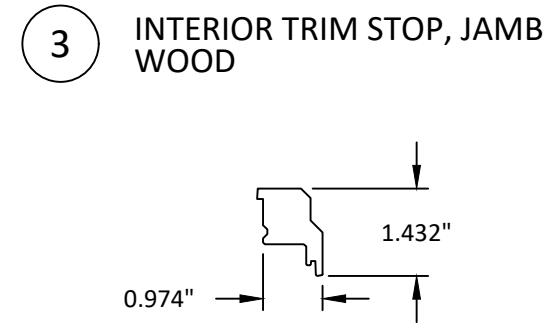
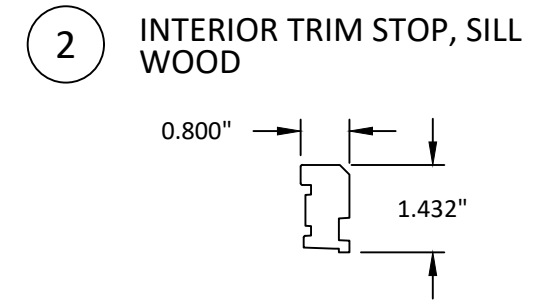
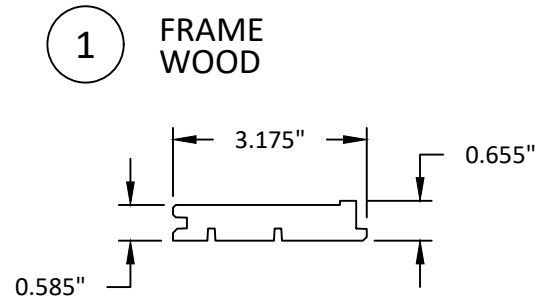
**TYPICAL GLAZING DETAIL**

- NOTE:
- GLASS COMPLIES WITH ASTM E1300 REQUIREMENTS AS WELL AS APPLICABLE SAFETY GLAZING REQUIREMENTS PER IBC. THICKNESS, TEMPER, AND SAFETY GLAZING REQUIREMENTS SHALL BE REVIEWED ON A SITE SPECIFIC BASIS.
  - SETTING BLOCK DUROMETER HARDNESS OF 70-90 (SHORE A).
  - SETTING BLOCKS TO BE LOCATED AT 1/4 SPAN LENGTH FOR GLASS WIDER THAN 36".
  - D.L.O. MAY NOT EXCEED MAX DIMENSIONS SHOWN IN ELEVATIONS.

9/6/2022 4:46 PM  
s:\projects\andersen windows\tdi-22-0251 - a-series pg upgrade windows\dwg\awd305.dwg

BILL OF MATERIALS			
ITEM #	DESCRIPTION	MATERIAL	MANUFACTURER
1	FRAME	WOOD	ANDERSEN
2	INTERIOR TRIM STOP, SILL	WOOD	ANDERSEN
3	INTERIOR TRIM STOP, JAMB	WOOD	ANDERSEN
4	INTERIOR TRIM STOP, HEAD	WOOD	ANDERSEN
5	INTERIOR CENTER JAMB TRIM	WOOD	ANDERSEN
6	FILLER BLOCK, HEAD	WOOD	ANDERSEN
7	PARTING STOP, HEAD	WOOD	ANDERSEN
8	SASH RAIL/STILE, INTERIOR	WOOD	ANDERSEN
9	UPPER SASH CHECKRAIL, INTERIOR	WOOD	ANDERSEN
10	LOWER SASH BOTTOM RAIL, INTERIOR	WOOD	ANDERSEN
11	LOWER SASH CHECKRAIL CAP, INTERIOR	WOOD	ANDERSEN
12	FRAME CLADDING, EXTERIOR	FIBREX <sup>®</sup>	ANDERSEN
13	SILL FRAME CLADDING, EXTERIOR	FIBREX <sup>®</sup>	ANDERSEN
14	NAILING FLANGE	RIGID PVC	ANDERSEN
15	SIDE JAMB LINER	RIGID PVC	ANDERSEN
16	BALANCE COVER	RIGID PVC	ANDERSEN
17	HEAD JAMB LINER	RIGID PVC	ANDERSEN
19	SASH RAIL/STILE, EXTERIOR	FIBERGLASS	ANDERSEN
19A	CHECKRAIL LOWER SASH	FIBERGLASS	ANDERSEN
20	LOWER SASH BOTTOM RAIL, EXTERIOR	FIBERGLASS	ANDERSEN
24	INTERLOCK, CHECKRAIL	304 SS	-
25	LOAD BRACKET, CHECKRAIL	GALV. STEEL	-
26	INSTALLATION CLIP	304 SS	-

NOTE: ALL WOOD COMPONENTS ARE PINE



100 FOURTH AVE NORTH  
BAYPORT, MN 55003-1096  
PH: (651) 264-5150 FX: (651) 264-5485

TITLE: A-SERIES DOUBLE HUNG  
PG UPGRADE WINDOW  
(NON-IMPACT)

BILL OF MATERIALS  
& COMPONENTS

PREPARED BY:

**BUILDING DROPS, INC.**  
398 E. DANIA BEACH BLVD., STE. 338  
DANIA BEACH, FL 33004  
PH: (954) 399-8478  
FAX: (954) 744-4738  
WEB: www.buildingdrops.com



REMARKS	BY	DATE

THE INSTALLATION DETAILS DESCRIBED HEREIN ARE GENERIC AND MAY NOT REFLECT ACTUAL CONDITIONS FOR A SPECIFIC SITE. IF SITE CONDITIONS CAUSE INSTALLATION TO DEVIATE FROM THE REQUIREMENTS DETAILED HEREIN, A LICENSED ENGINEER OR ARCHITECT SHALL PREPARE SITE SPECIFIC DOCUMENTS FOR USE WITH THIS DOCUMENT.



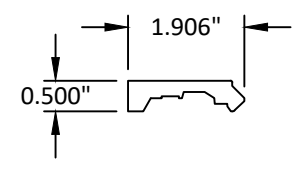
HERMES F. NORERO, P.E.  
TEXAS P.E. No 118471  
BUILDING DROPS, INC  
398 E. DANIA BEACH BLVD. # 338  
DANIA BEACH, FL 33004  
TBPE FIRM No. 13734

DATE:	06.30.22
DWG. BY:	SH
CHK. BY:	HFN
SCALE:	NTS
DWG. #:	AWD305

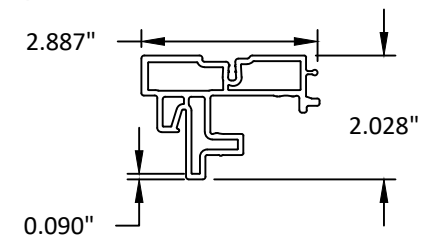
SHEET  
**5**  
OF 6

9/6/2022 4:46 PM  
s:\projects\andersen windows\ltd-22-0251 - tdi submittal - a-series pg upgrade windows\dwg\ltd-22-0251 - a-series pg upgrade window\awd305.dwg

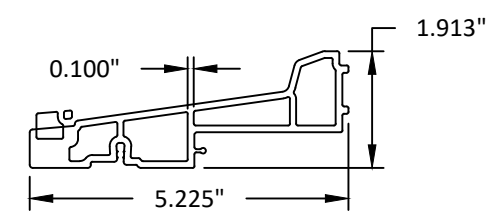
**11** LOW. SASH CHECKRAIL CAP, INT. WOOD



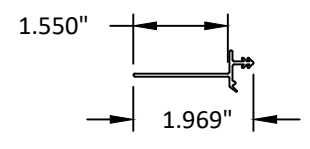
**12** FRAME CLADDING, EXT. FIBREX



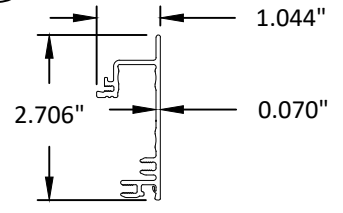
**13** SILL FRAME CLADDING, EXT. FIBREX



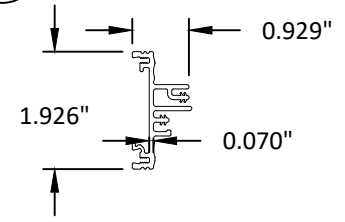
**14** NAILING FLANGE RIGID PVC



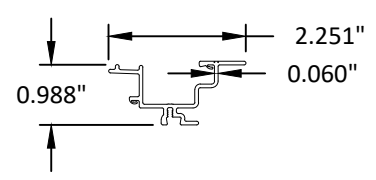
**15** SIDE JAMB LINER RIGID PVC



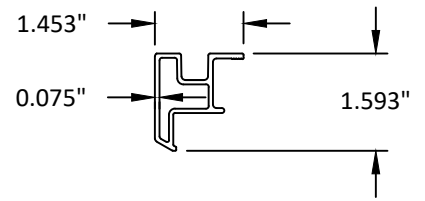
**16** BALANCE COVER RIGID PVC



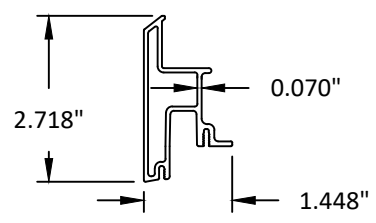
**17** HEAD JAMB LINER RIGID PVC



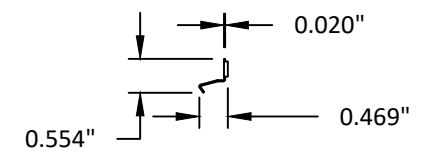
**19** SASH RAIL/STILE, EXT. FIBERGLASS



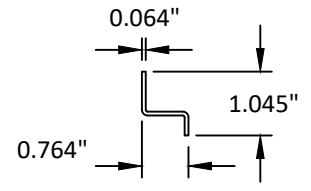
**20** LOWER SASH BOTTOM RAIL, EXT. FIBERGLASS



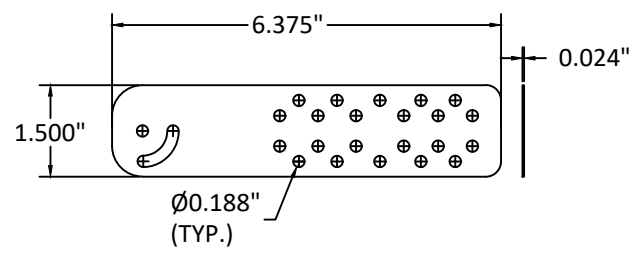
**24** INTERLOCK, CHECKRAIL 304 SS



**25** LOAD BRACKET CHECKRAIL GALV. STEEL (INTERLOCK)



**26** INSTALLATION CLIPS 304 SS



NOTE: INSTALLATION CLIPS SHALL BE ATTACHED TO WINDOW FRAME WITH TWO (2) #8 X 5/8" SCREWS



100 FOURTH AVE NORTH  
BAYPORT, MN 55003-1096  
PH: (651) 264-5150 FX: (651) 264-5485

TITLE: A-SERIES DOUBLE HUNG PG UPGRADE WINDOW (NON-IMPACT) COMPONENTS

PREPARED BY: **BD BUILDING DROPS**

**BUILDING DROPS, INC.**  
398 E. DANIA BEACH BLVD., STE. 338  
DANIA BEACH, FL 33004  
PH: (954) 399-8478  
FAX: (954) 744-4738  
WEB: www.buildingdrops.com

REMARKS	BY	DATE

THE INSTALLATION DETAILS DESCRIBED HEREIN ARE GENERIC AND MAY NOT REFLECT ACTUAL CONDITIONS FOR A SPECIFIC SITE. IF SITE CONDITIONS CAUSE INSTALLATION TO DEVIATE FROM THE REQUIREMENTS DETAILED HEREIN, A LICENSED ENGINEER OR ARCHITECT SHALL PREPARE SITE SPECIFIC DOCUMENTS FOR USE WITH THIS DOCUMENT.



HERMES F. NORERO, P.E.  
TEXAS P.E. No 118471  
BUILDING DROPS, INC  
398 E. DANIA BEACH BLVD. # 338  
DANIA BEACH, FL 33004  
TBPE FIRM No. 13734

DATE: **06.30.22**

DWG. BY: **SH**      CHK. BY: **HFN**

SCALE: **NTS**

DWG. #: **AWD305**

SHEET **6** OF 6