

GENERAL NOTES:

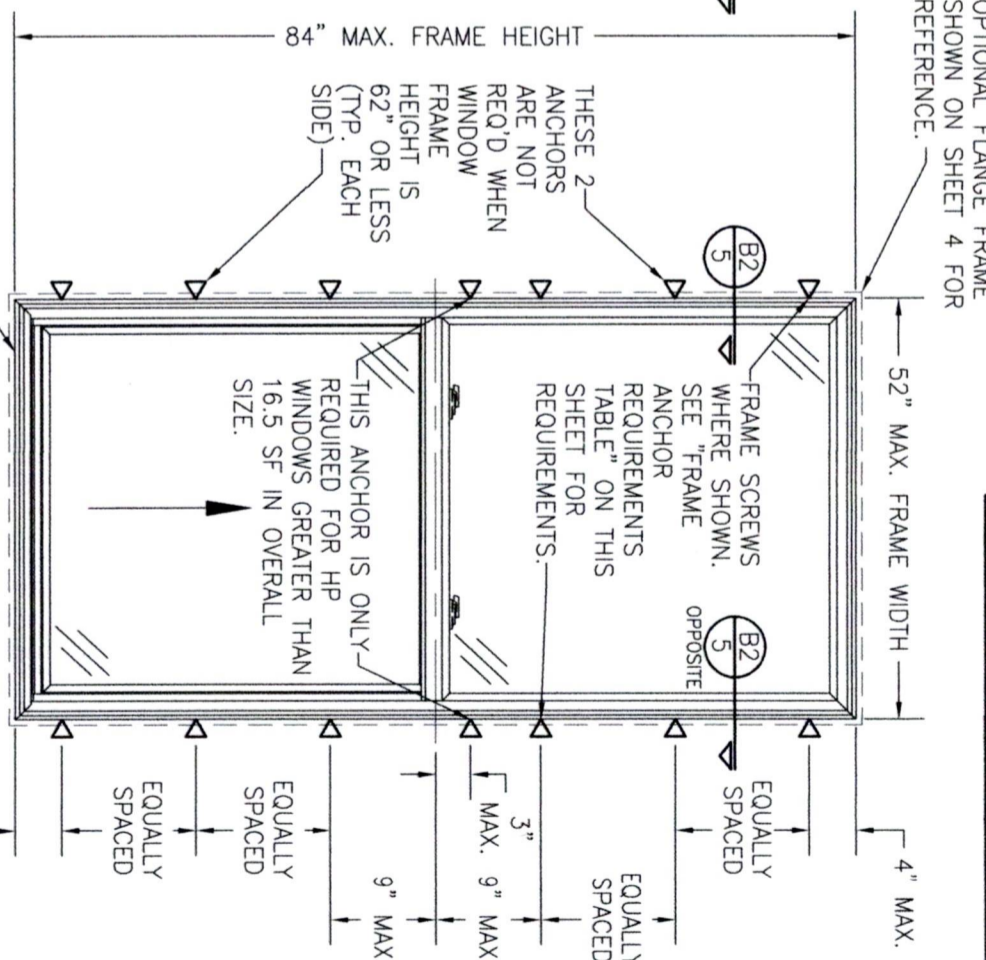
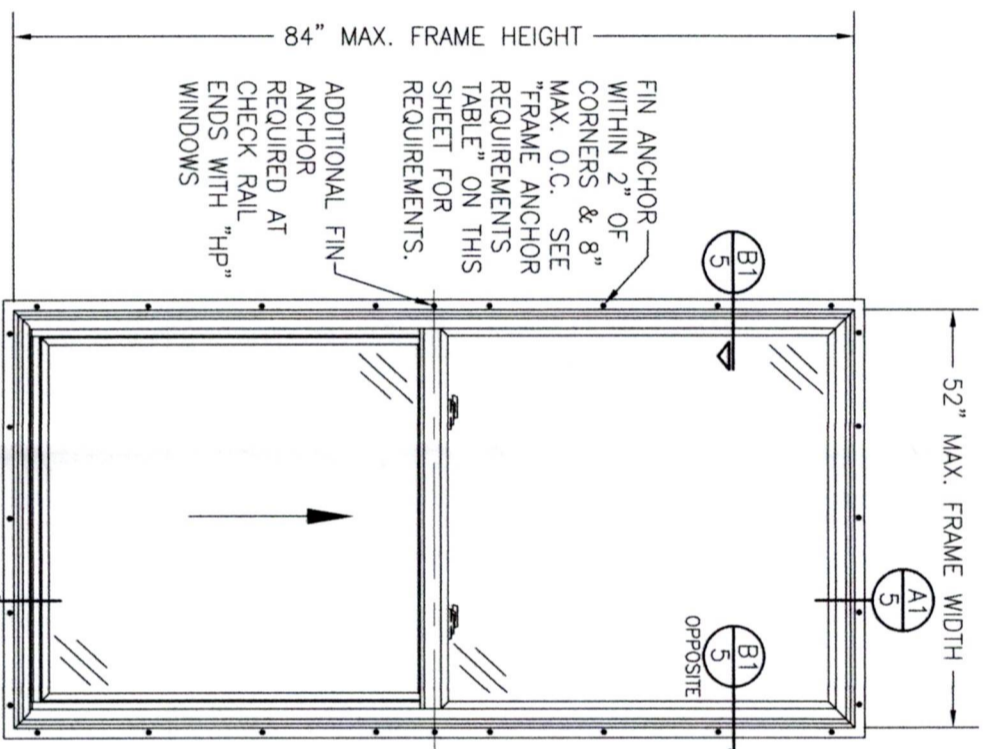
1. ALL FASTENERS SHALL BE IN ACCORDANCE WITH THESE DRAWINGS. SPECIFIED ANCHOR EMBED TO BASE MATERIAL SHALL BE BEYOND WALL FINISH OR STUCCO.
2. OPENINGS, BUCKING & BUCKING FASTENERS MUST BE PROPERLY DESIGNED & INSTALLED TO TRANSFER WIND LOADS TO THE STRUCTURE.
3. THESE NON-IMPACT RATED PRODUCT INSTALLATIONS ARE IN ACCORDANCE WITH AND MEET THE REQUIREMENTS OF THE 2018 INTERNATIONAL BUILDING CODE (IBC).
4. ALL ANCHORS SECURING PRODUCT FRAME TO PRESSURE TREATED BUCKS OR WOOD FRAMING SHALL BE CAPABLE OF RESISTING CORROSION CAUSED BY THE PRESSURE TREATING CHEMICALS IN THE WOOD.
5. TO THE BEST OF OUR KNOWLEDGE, THE PRODUCT SHOWN HEREIN IS CERTIFIED & QUALITY ASSURED BY A NATIONALLY ACCREDITED CERTIFICATION/QA ENTITY & SHALL BE LABELED IN ACCORDANCE WITH CERTIFICATION/QA ENTITIES SPECIFICATIONS. PRODUCT ASSEMBLY IS NOT PART OF THIS DRAWING AND SHALL BE IN ACCORDANCE WITH THE MANUFACTURER'S QUALITY ASSURANCE SPECIFICATIONS & TESTING REPORTS.
6. CERTIFICATION OF THESE PRODUCT INSTALLATIONS SHALL BE CONSIDERED VOID IF ANY OF THE FOLLOWING APPLY: 1) THEY ARE INSTALLED WITHOUT A BUILDING PERMIT FROM THE APPLICABLE LOCAL BUILDING DEPARTMENT. 2) IF THEY ARE INSTALLED BY ANOTHER OTHER THAN A LICENSED CONTRACTOR EXPERIENCED WITH WINDOW/DOOR INSTALLATIONS. 3) IF CHANGES HAVE OCCURRED TO THE PRODUCT'S CERTIFICATION ENTITY'S CERTIFICATE THAT CAUSE THESE INSTALLATIONS TO BE INCORRECT OR INCONSISTENT WITH WHAT HAS BEEN TESTED.
7. THE LEAST DESIGN PRESSURE SPECIFIED EITHER IN THIS DRAWING OR IN THE PRODUCTS CERTIFICATION SHALL CONTROL FOR THE INSTALLED PRODUCT.
8. THESE DRAWINGS CERTIFY THE PRODUCT INSTALLATION ONLY. WATER PROOFING OF THE INSTALLED PRODUCT IS NOT PART OF THIS INSTALLATION CERTIFICATION. THAT RESPONSIBILITY SHALL BE THAT OF THE MANUFACTURER &/OR INSTALLER.

INSTALLATION EVALUATION IS BASED ON APPLICABLE ANCHOR STANDARDS AND/OR INFORMATION & RESULTS FROM APPLICABLE TEST REPORTS. THE BUILDING CODE VERSION CONSIDERED WITH THE EVALUATION WAS THAT IN FORCE AT THE TIME OF THE EVALUATION. IN THE EVENT OF CODE VERSION CHANGES/UPDATES OR IN THE EVENT THAT NEW OR ADDITIONAL TESTING IS COMPLETED ON THE REFERENCED PRODUCT, PRIOR TO STATING CODE COMPLIANCE, THE MANUFACTURER SHALL CONFIRM WITH THE INSTALLATION EVALUATION ENGINEER OF RECORD THAT THE INSTALLATIONS SPECIFIED HERE-IN ARE CURRENT WITH THE THEN CURRENT TESTING, CODE AND APPLICABLE STANDARDS.

ANCHOR/SUBSTRATE EVALUATION NOTE:
ALL ANCHORS IN THEIR SPECIFIED SUBSTRATES HAVE BEEN ANALYZED IN ACCORDANCE WITH THEIR APPLICABLE STANDARD(S) AND ARE FOUND TO BE CAPABLE OF SUPPORTING ALL LOADS IMPOSED ON THEM UNDER THE GUIDELINES OF THIS DOCUMENT. ANY SUBSTRATES OR CONDITIONS OUTSIDE OF WHAT IS SHOWN HERE-IN SHALL BE SUBJECT TO JOB SPECIFIC ENGINEER'S REVIEW & CERTIFICATION.

FRAME ANCHOR REQUIREMENTS TABLE

OPENING TYPE (SUBSTRATE)	FRAME/CLIP/NAIL FIN TO OPENING FASTENER TYPE	MINIMUM EMBED	MINIMUM EDGE DIST.
(1) FRAME SCREWS (SERIES 20)			
MIN. 2X4 WOOD FRAME OR BUCK (MIN. GR. 3 & G=0.55)	NO. 10 SMS OR WOOD SCREW	1 1/4"	3/4"
MIN. 1.8 GA. 33 KSI METAL STUD	NO. 10 GR. 5 SELF TAP/DRILL SCREW	FULL	1/2"
MIN. 1/8" THK A36 STEEL	NO. 10 GR. 5 SELF TAP/DRILL SCREW	FULL	1/2"
MIN. 1/8" THK 6063-T5 ALUM.	NO. 10 GR. 5 SELF TAP/DRILL SCREW	FULL	1/2"
C-90 CMU/2500 PSI CONCRETE	(2) 1/4" CONCRETE SCREW	1 1/4"	2"
(1) INSTALLATION CLIP SCREWS (SERIES 20)			
MIN. 2X4 WOOD FRAME OR BUCK (MIN. GR. 3 & G=0.55)	NO. 10 SMS OR WOOD SCREW	1 1/4"	3/4"
MIN. 1.8 GA. 33 KSI METAL STUD	NO. 10 GR. 5 SELF TAP/DRILL SCREW	FULL	1/2"
MIN. 1/8" THK A36 STEEL	NO. 10 GR. 5 SELF TAP/DRILL SCREW	FULL	1/2"
MIN. 1/8" THK 6063-T5 ALUM.	NO. 10 GR. 5 SELF TAP/DRILL SCREW	FULL	1/2"
C-90 CMU/2500 PSI CONCRETE	(2) 1/4" CONCRETE SCREW	1 1/4"	2"
NAILING FIN FASTENERS (SERIES 10)			
MIN. 2X4 WOOD FRAME OR BUCK (MIN. GR. 3 & G=0.55)	(3) NO. 8 X 1 1/2" SMS	1 3/8"	1/2"
MIN. 2X4 WOOD FRAME OR BUCK (MIN. GR. 3 & G=0.55)	(4) 2" X 11 GA. ROOFING NAIL	1 7/8"	1/2"
MIN. 1/8" THK A36 STEEL	(3) NO. 8 GR. 5 SELF TAP/DRILL SCREW	FULL	1/2"
MIN. 1/8" THK 6063-T5 ALUM.	(3) NO. 8 GR. 5 SELF TAP/DRILL SCREW	FULL	1/2"



ALLOWABLE DESIGN PRESSURE (SINGLE WINDOW)

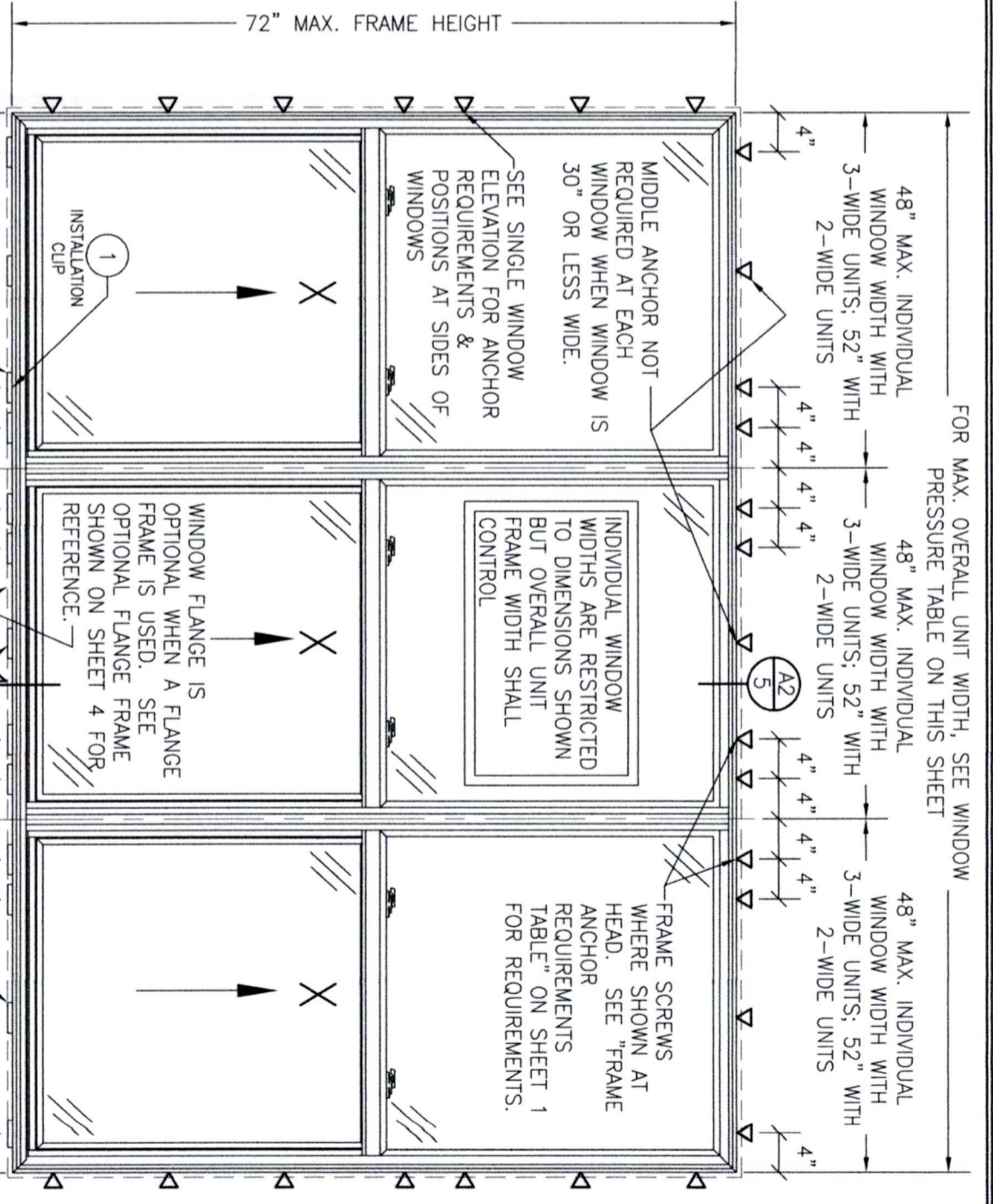
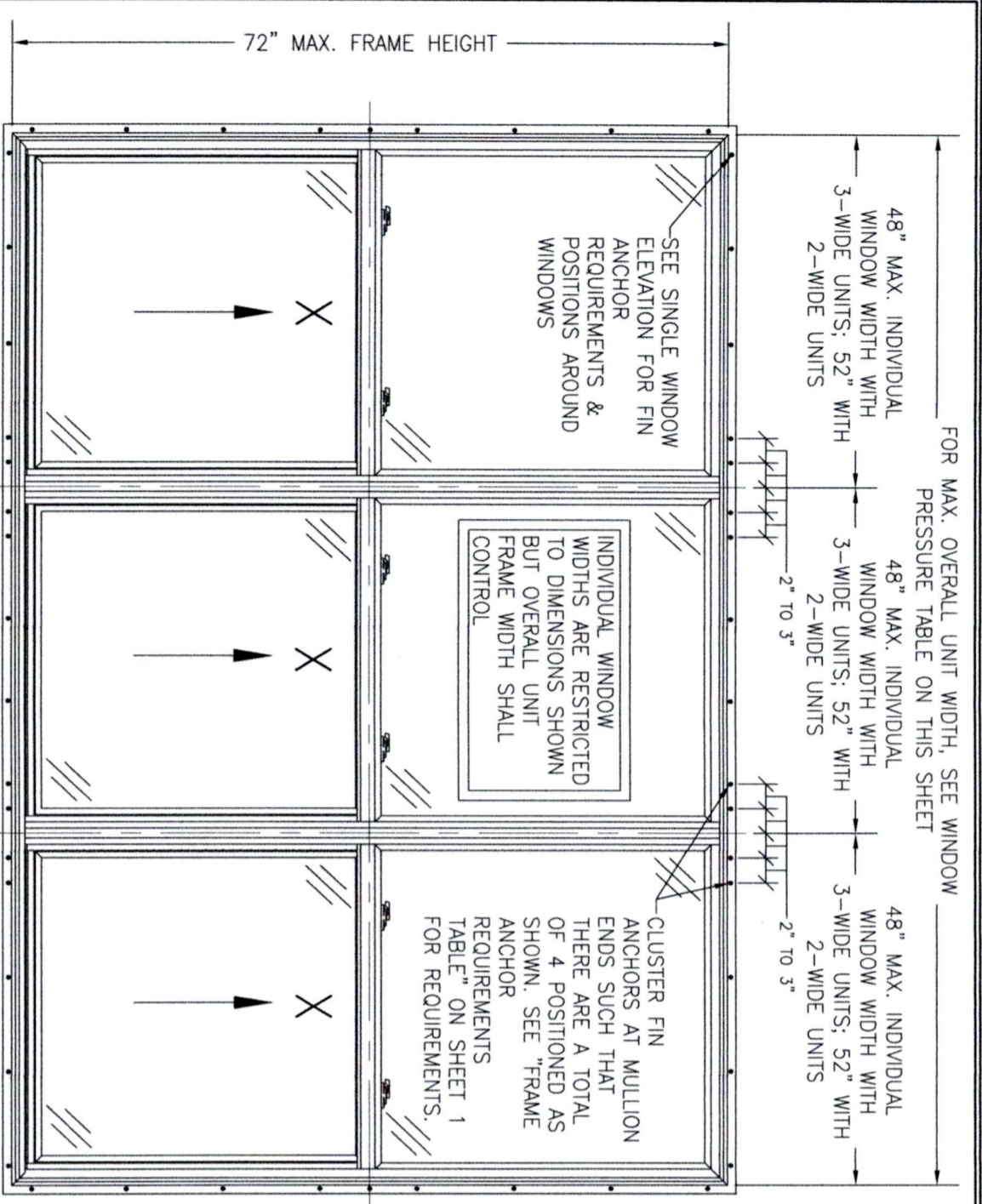
WINDOW SIZE	MAX. FRAME WIDTH (IN.)	MAX. FRAME HEIGHT (IN.)	STILE REINFORCEMENT	FIXED SASH MEETING RAIL REINFORCEMENT	ACTIVE SASH MEETING RAIL REINFORCEMENT	ALLOWABLE PRESSURE (POSITIVE & NEGATIVE) (PSF)
(2) 36	59.5	72	NO	NO	YES	35
(2) 36	72	72	YES	NO	YES	35
(2) 42	72	72	YES	YES	YES	50
(2) 48	59.5	72	NO	YES	YES	35
(2) 48	72	72	YES	YES	YES	35
(2) 48	84	84	YES	YES	YES	35
(2) 52	62	62	YES	YES	YES	50

(1) WINDOW HAS A MAXIMUM 35" TALL BOTTOM VENT.
(2) WINDOW HAS EQUAL TOP & BOTTOM VENTS.
PRESSURE SHOWN IN THIS TABLE IS FOR INSTALLATION CONDITIONS ONLY. THE GOVERNING DESIGN PRESSURE ON THE WINDOWS SHALL BE THE LESSER OF THAT SHOWN IN THE INDIVIDUAL WINDOW'S APPROVAL OR THAT SHOWN IN THIS TABLE.

WINDOW FLANGE IS OPTIONAL WHEN A FLANGE FRAME IS USED. SEE OPTIONAL FLANGE FRAME SHOWN ON SHEET 4 FOR REFERENCE.
THESE DRAWINGS ARE APPLICABLE ONLY TO THE PRODUCT SPECIFIED. THEY MAY NOT BE USED FOR THE ASSEMBLY AND/OR INSTALLATION OF ANY OTHER PRODUCT NOR MAY THEY BE USED FOR RATIONAL AND/OR LOCAL APPROVAL OF ANY PRODUCT NOT PRODUCED BY THE MANUFACTURER STATED ON THESE DRAWINGS.



DRAWING NO. 1572T SHEET NO. 1 OF 4	CERTIFICATION DEC 19 2022	DRAWING TITLE SERIES 10/20 VINYL SINGLE HUNG WINDOW		JOB INFORMATION: PELLA CORPORATION 2000 PROLINE PLACE GETTYSBURG, PA 17325 717-334-0099
		CONSULTANTS W. W. SCHAEFER ENGINEERING & CONSULTING, P.A. (REG. NO. F-14980) 26376 NADIR ROAD, UNIT 309 PUNTA GORDA, FL 33983 PHONE: 561-744-3424	CHECKED BY: W.W.S.	
WARREN W. SCHAEFER, P.E. P.E. NO. 113497		NO. REVISION DESCRIPTION BY DATE A1 ADD FLANGE FRAME OPTION W.W.S. 01/24/22 B1 UPDATE PER NEW TESTING W.W.S. 12/15/22		DATE: 01/20/20



**EXTERIOR ELEVATION:
MULTIPLE WINDOWS
(FIN INSTALLED SERIES 10)**

SCALE: 3/4" = 1'-0"

INSTALLATION CLIPS WHERE SHOWN. SEE "FRAME ANCHOR REQUIREMENTS TABLE" ON SHEET 1 FOR REQUIREMENTS.
NOTE: CLIPS MAY BE USED AT HEAD ALSO IN LIEU OF FRAME SCREWS

**EXTERIOR ELEVATION:
MULTIPLE WINDOWS
(FRAME SCREW INSTALLED SERIES 20)**

SCALE: 3/4" = 1'-0"

MIDDLE ANCHOR NOT REQUIRED AT EACH WINDOW WHEN WINDOW IS 30" OR LESS WIDE.

PRESSURE SHOWN IN THIS TABLE IS FOR INSTALLATION CONDITIONS ONLY. THE GOVERNING DESIGN PRESSURE ON THE WINDOWS SHALL BE THE LESSER OF THAT SHOWN IN THE INDIVIDUAL WINDOW'S APPROVAL OR THAT SHOWN IN THIS TABLE.

ALLOWABLE DESIGN PRESSURE (DOUBLE & TRIPLE WINDOWS)					
OVERALL WINDOW SIZE	MULLION REINFORCEMENT TYPE	STILE REINFORCEMENT	FIXED SASH MEETING RAIL REINFORCEMENT	ACTIVE SASH MEETING RAIL REINFORCEMENT	ALLOWABLE PRESSURE (POSITIVE & NEGATIVE) (PSF)
DOUBLE WINDOWS					
72	N/A	NO	NO	YES	35
72	I-BAR	NO	NO	YES	35
72	I-BAR	YES	YES	YES	50
72	I-BAR	YES	NO	YES	40
96.5	N/A	NO	NO	YES	35
96.5	I-BAR	NO	NO	YES	35
96.5	I-BAR	YES	YES	YES	35
104.5	I-BAR	YES	YES	YES	+35/-50
104.5	I-BAR	YES	YES	YES	+35/-40
TRIPLE WINDOWS					
108	N/A	NO	NO	YES	35
109	I-BAR	NO	NO	YES	35
109	I-BAR	YES	YES	YES	40

HP (HIGH PERFORMANCE) UNIT

FRAME SCREW INSTALLED UNIT

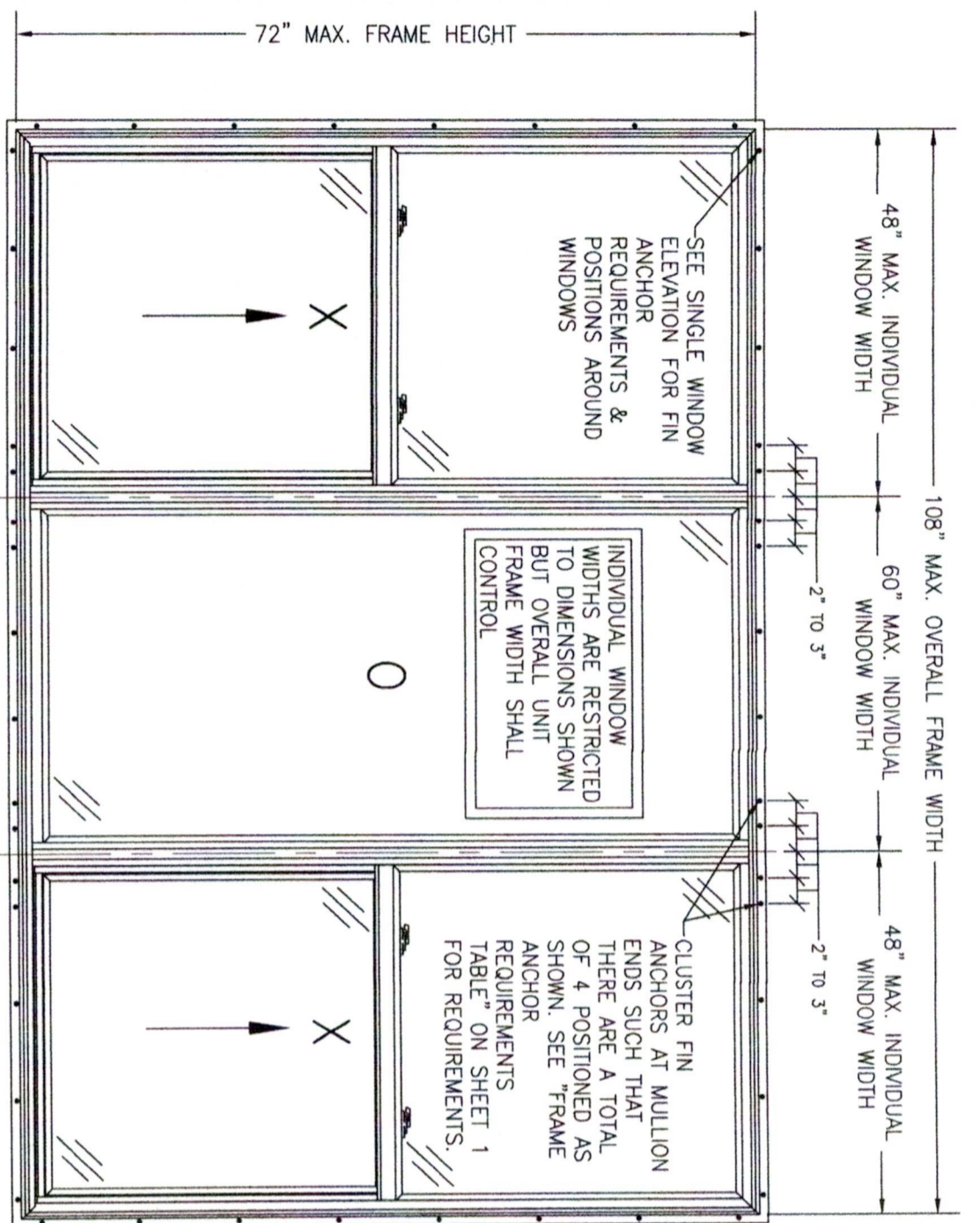
NAIL FIN INSTALLED UNIT

NOTE:

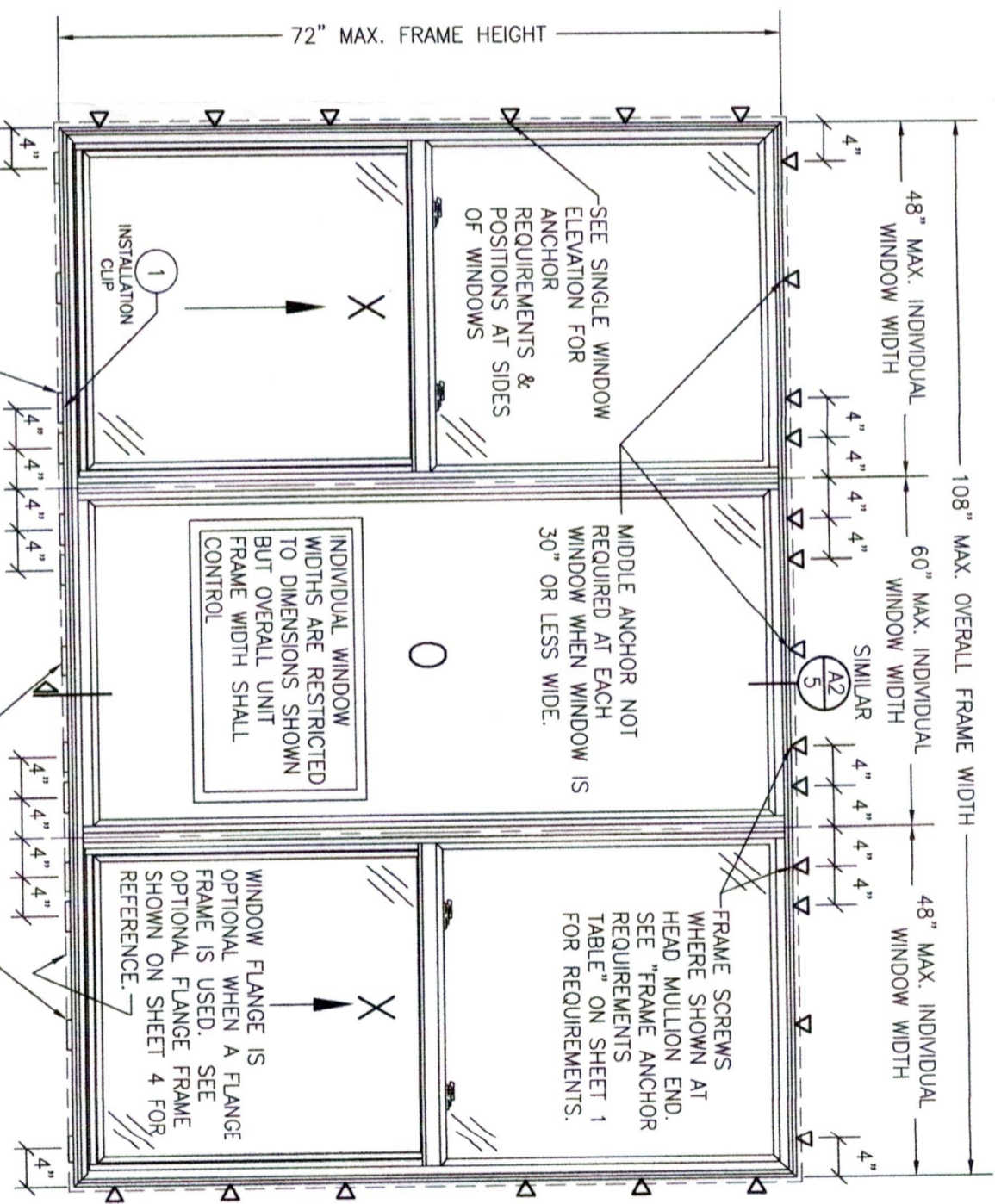
1. ALL WINDOWS ARE RESTRICTED BY THE DIMENSIONS SPECIFIED.
2. TRIPLE WINDOW SHOWN. DOUBLE WINDOW ALSO APPLIES.
3. IF MORE THAN 3 WINDOWS ARE TO BE MULLED IN ONE OPENING, ALLOWABLE PRESSURE ON THOSE UNITS SHALL BE AS STATED FOR THE COMPARABLE TRIPLE UNIT.



DRAWING NO. 1572T SHEET NO. 2 OF 4	DRAWING TITLE SERIES 10/20 VINYL SINGLE HUNG WINDOW	CONSULTANTS W. W. SCHAEFER ENGINEERING & CONSULTING, P.A. (REG. NO. F-14980) 26376 NADIR ROAD, UNIT 309 PUNTA GORDA, FL 33983 PHONE: 561-744-3424	JOB INFORMATION: PELLA CORPORATION 2000 PROLINE PLACE GETTYSBURG, PA 17325 717-334-0099	DRAWN BY: W.M.S. CHECKED BY: W.M.S. DATE: 01/30/20							
		REVISIONS: <table border="1"> <thead> <tr> <th>NO.</th> <th>REVISION DESCRIPTION</th> <th>BY</th> <th>DATE</th> </tr> </thead> <tbody> <tr> <td>1</td> <td></td> <td></td> <td></td> </tr> </tbody> </table>			NO.	REVISION DESCRIPTION	BY	DATE	1		
NO.	REVISION DESCRIPTION	BY	DATE								
1											



**EXTERIOR ELEVATION:
MULTIPLE OPERABLE/FIXED WINDOWS
(FIN INSTALLED SERIES 10)**
SCALE: 3/4" = 1'-0"



**EXTERIOR ELEVATION:
MULTIPLE OPERABLE/FIXED WINDOWS
(FRAME SCREW INSTALLED SERIES 20)**
SCALE: 3/4" = 1'-0"

ALLOWABLE DESIGN PRESSURE (XOX WINDOWS)
+/-30 PSF

PRESSURE SHOWN IN THIS TABLE IS FOR INSTALLATION CONDITIONS ONLY. THE GOVERNING DESIGN PRESSURE ON THE WINDOWS SHALL BE THE LESSER OF THAT SHOWN IN THE INDIVIDUAL WINDOW'S APPROVAL OR THAT SHOWN IN THIS TABLE.

NOTE:
1. ALL WINDOWS ARE RESTRICTED BY THE DIMENSIONS SPECIFIED.
2. TRIPLE WINDOW SHOWN. DOUBLE WINDOW ALSO APPLIES & IS RESTRICTED TO A MAXIMUM OVERALL FRAME WIDTH OF 96".



CERTIFICATION
DEC 19 2022

WARREN W. SCHAEFER, P.E.
NO. 113497

DRAWING TITLE
SERIES 10/20 VINYL SINGLE HUNG WINDOW

CONSULTANTS
W. W. SCHAEFER ENGINEERING & CONSULTING, P.A. (REG. NO. F-14980)
26376 NADIR ROAD; UNIT 309
PUNTA GORDA, FL 33983
PHONE: 561-744-3424

JOB INFORMATION:
PELLA CORPORATION
2000 PROLINE PLACE
GETTYSBURG, PA 17325
717-334-0099



NO.	REVISION DESCRIPTION	BY	DATE

DRAWN BY: W.M.S.
CHECKED BY: W.M.S.
PLOT: 1-16
DATE: 01/20/20

DRAWING NO. 1572T
REV. A
SHEET NO. 3 OF 4

