

Product Evaluation

RC721 | 0723

Engineering Services Program

The following product has been evaluated for compliance with the wind loads specified in the International Residential Code (IRC) and the International Building Code (IBC).

This product evaluation is not an endorsement of this product or a recommendation that this product be used. The Texas Department of Insurance has not authorized the use of any information contained in the product evaluation for advertising, or other commercial or promotional purpose.

This product evaluation is intended for use by those individuals who are following the design wind load criteria in Chapter 3 of the IRC and Section 1609 of the IBC. The design loads determined for the building or structure shall not exceed the design load rating specified for the products shown in the limitations section of this product evaluation. This product evaluation does not relieve a Texas licensed engineer of his responsibilities as outlined in the Texas Insurance Code, the Texas Administrative Code, and the Texas Engineering Practice Act.

For more information, contact TDI Engineering Services Program at (800) 248-6032.

Evaluation ID: RC-721

Effective Date: July 1, 2023

Re-evaluation Date: July 2027

Product Name: Doc Palapa Palm Synthetic Roof Covering Over a Plywood Deck

Manufacturer: Premier Plastics
9680 S. Oakwood Dr.
Franklin, WI 53132
(414) 423-5940

General Description:

The Doc Palapa Palm Synthetic Roof Covering, manufactured by Premier Plastics, is a non-structural plastic roof covering. The palms are constructed from 0.030" Premier proprietary plastic. The palms are suitable for installation with an exposure of 8". Figure 1 shows the profile of the product.

Limitations:

Roof Decking: Minimum 5/8" plywood over roof framing supports (rafters or trusses) spaced 24" max on center.

Roof Deck Attachment: The roof decking must meet or exceed the uplift requirements of the IRC or the IBC.

Design Wind Pressures: The design wind pressure uplift resistance is -66.0 psf.

Installation over an Existing Roof Covering: Installation over an existing roof covering is limited to a maximum of one existing layer of composition shingles, wood shingles or shakes, built-up roofing, or roll roofing applied over an existing solid roof deck of minimum 5/8" plywood. Note: Inspection of existing roof deck must be made prior to the installation of the Doc Palapa Palm Synthetic Roof Covering. The condition of the existing roof deck must be acceptable to receive the palm roof covering before roof covering installation can begin.

Roof Slope: The roof covering may be installed on roofs with a roof slope as low as 4:12.

Installation:

General: Install the roof covering in accordance with the manufacturer's recommended installation instructions and this evaluation report.

Roof Framing Members: Space the roof-framing members (rafters or trusses) at maximum of 24" on center.

Roof Deck Attachment: #8d x 2" Galvanized ring-shank roofing nail. Field installation at 12" max on center. Perimeter installation at 6" max on center.

Underlayment: Minimum ASTM D 226 Type II with 4" overlaps and 6" end-laps, anchored with 12 Ga. x 1-1/4" galvanized roof nails with 32 Ga. Tin caps spaced 6" on center in rows at the perimeter, at overlaps, and two intermediate rows staggered and spaced 12" on center.

Attachment of Shingles to Wood Deck: Secure each palm with seven #8 x 1-3/4" FH screws with plastic caps; four screws spaced 6" on center 16" from the top of the palm and three screws spaced 6" on center 8" from the top of the palm. The perimeter shall be secured with the same fasteners and caps spaced at 3" on center.

Note: Keep the manufacturer's installation instructions available on the job site during the installation. Use corrosion resistant fasteners as specified in the IRC and the IBC.

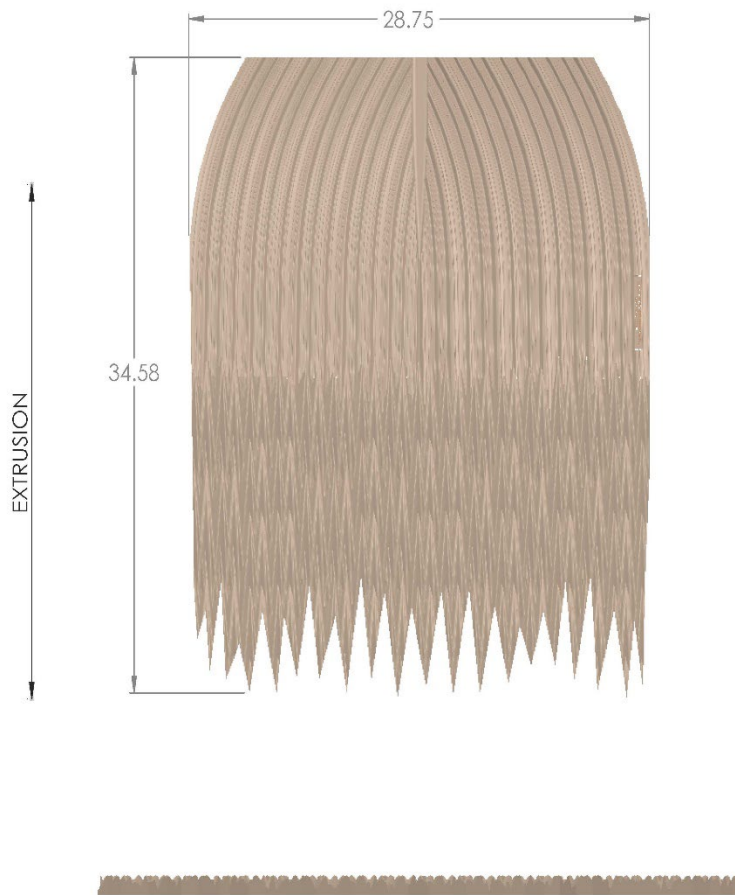


Figure 1. Shingle Profile.