

## Product Evaluation

GDR01 | 0622

Engineering Services Program

The following product has been evaluated for compliance with the wind loads specified in the International Residential Code (IRC) and the International Building Code (IBC).

This product evaluation is not an endorsement of this product or a recommendation that this product be used. The Texas Department of Insurance has not authorized the use of any information contained in the product evaluation for advertising, or other commercial or promotional purpose.

This product evaluation is intended for use by those individuals who are following the design wind load criteria in Chapter 3 of the IRC and Section 1609 of the IBC. The design loads determined for the building or structure shall not exceed the design load rating specified for the products shown in the limitations section of this product evaluation. This product evaluation does not relieve a Texas licensed engineer of his responsibilities as outlined in the Texas Insurance Code, the Texas Administrative Code, and the Texas Engineering Practice Act.

For more information, contact TDI Engineering Services Program at (800) 248-6032.

**Evaluation ID:** GDR-01

**Effective Date:** June 1, 2022

**Re-evaluation Date:** September 2025

**Product Name:** Residential Sectional Steel Garage Doors, Non-impact Resistant

**Manufacturer:** Amarr Garage Door  
165 Carriage Ct.  
Winston-Salem, NC 27105  
(336) 744-5100

**Brand Names:** Amarr  
Reliabilt  
Pella  
Thermastar  
Encompass  
Sears  
Champion  
Precision  
Home Depot  
Orchard Supply

The product referenced above will be accepted for use in designated catastrophe areas along the Texas Gulf Coast when installed in accordance with this product evaluation. Installation instructions and the appropriate design drawings for the particular model, as shown in Tables 4 through 17, must be provided and available on the job site during installation.

**General Description:**

**Amarr Garage Doors** are sectional overhead doors constructed from galvanized steel with a baked on polyester finish. Doors may be raised panel or flush and have a smooth or embossed wood grain texture. Doors may be single skin model 600, 625, 650, 675, 950, 500, 1000, 2000, 2400, 2700, and 2720, 2" thick, with or without insulation. Doors may be insulated models P500, C500, D500, 1200, 1350, 1380, 1480, 1500, 1600, 3100 and 1650 with an interior skin and 1-3/8" or 2" polystyrene insulation between the skins. Doors may be insulated sectional model 3000, 2" thick, with an interior skin and polyurethane insulation. Doors may be full view model 3500 and 3550, 2" thick with an extruded aluminum frame. Model dimensions, drawing number, glazing option, and vertical reinforcement are shown in Tables 4 through 17.

**Product Identification:** The garage doors are marketed under several retail names. Refer to the "Retailing Branding Product Cross Reference Chart" in Table 3 to determine the appropriate Amarr model number. An Amarr label will be affixed to each garage door. The Amarr label must include the manufacturer's name (**Amarr**), the model number, test standards, allowable design pressure rating, and the design drawing number.

**Product Brand Names:** Product brand names for individual retailers are shown in Table 3. The brand names are cross referenced to the Amarr model number.

**Limitations:**

This evaluation report includes non-impact resistant sectional garage doors.

Doors may include optional glazing. Refer to Tables 4 through 17.

**Glazing:** The design pressure rating for doors with glazing must not exceed the design pressure rating specified in Tables 4 through 17.

The maximum height of each door section is specified on the design drawings.

The doors must have a maximum allowable width of 24' 2". Refer to Tables 4 through 17 for the allowable width of the door for a particular door model.

The doors must have a maximum allowable height of 24' 1". Refer to Tables 4 through 17 for the allowable height of the door for a particular door model.

The design pressure rating for a particular model door is specified in Tables 4 through 17.

Each model door may have multiple design pressure ratings based upon the type of horizontal, vertical, and end reinforcing that is utilized. To attain the specified design pressure ratings, doors must be installed and reinforced according to the appropriate design drawing shown in Tables 4 through 17. Doors using the Vertical Post system must have the system activated in order to achieve the allowable design pressure rating as noted in this evaluation report and on the design drawings.

**Impact Resistance:** The garage door assemblies listed in Tables 4 through 17 have not been tested for windborne debris resistance. Garage doors with glazing will need to be protected with an impact protective system.

**Installation:**

**Design Drawings:** The doors must be installed as specified on the design drawings. The design drawings must be provided with the door. Each page of the design drawings must be sealed, signed, and dated by Thomas Shelmerdine, PE. The following information, as a minimum, must be provided within boxes located on each page of the design drawings:

- Model Number
- Amarr Brand Names
- Drawing Number
- Drawing Revision Number
- Design Pressure Rating
- Maximum Door Size (Width and Height)

**Door Installation:** Doors must be installed according to the appropriate design drawing specified for the particular model and design pressure shown in Tables 4 through 17. Wall framing members and 2x6 wood jambs must be minimum Spruce-Pine-Fir dimension lumber unless otherwise specified on the approved drawings or in this evaluation report.

**Attachment of Doors to Wall Framing:** The door track brackets must be attached either directly to the wall framing or to minimum 2x6 wood jambs that are secured to the wall framing with fasteners.

**Track Bracket Spacing:** Fastener requirements for track brackets must be as specified on the design drawings. Wood jambs must be minimum Spruce-Pine-Fir dimension lumber. Wall framing for the direct attachment of track brackets must be minimum Spruce-Pine-Fir dimension lumber. Track bracket spacing must not exceed either the spacing specified on the design drawings for the door to be installed or the spacing specified in Table 1, whichever is closer.

**Table 1**  
**Track Bracket Spacing (1)**  
**Direct Attachment of Brackets to Wall Framing**  
**Attachment of Track Brackets to Wood Jambs**

| Door Width | Maximum Positive Design Load (psf) | Track Bracket Spacing |
|------------|------------------------------------|-----------------------|
| 9'         | +45.5                              | 24"                   |
| 9'         | +60.6                              | 18"                   |
| 9'         | +68.3                              | 16"                   |
| 9'         | +91.0                              | 12"                   |
| 16'        | +25.6                              | 24"                   |
| 16'        | +34.1                              | 18"                   |
| 16'        | +38.4                              | 16"                   |
| 16'        | +51.2                              | 12"                   |
| 18'        | +22.7                              | 24"                   |
| 18'        | +30.3                              | 18"                   |
| 18'        | +34.1                              | 16"                   |
| 18'        | +45.5                              | 12"                   |

1) Wood framing members must be Spruce-Pine-Fir Pine lumber ( $SG \geq 0.42$ ).

**Methods of Door Attachment:** The allowable methods of attachment of the doors to the wall framing and illustrations of the allowable methods of attachment are specified below (Use one of the following options):

1. **Direct attachment of track to wood-framed walls:** Brackets for the vertical tracks and flag angles of the door may be attached directly to the wall framing with the fasteners specified on the design drawings, therefore eliminating the need for the 2x6 wood jamb called for on the design drawings. The attachment of the vertical tracks must be as shown in Figure 1. Track bracket spacing must be as specified in the Installation section of this evaluation report.
2. **Attachment of track to concrete, masonry block or wood-framed walls using a wood jamb:** For drawings beginning with the prefix "IRC" or "IBC," if 2x6 wood jambs are used, attach using the type, number and minimum embedment for fasteners shown on each drawing. The attachment of the vertical tracks must be as shown in Figure 2. Track bracket spacing must be as specified in the Installation section of this evaluation report. For the attachment of wood jambs to Spruce-Pine-Fir wall framing, attach using the type, number, and minimum embedment for fasteners shown on Table 2.
3. **Attachment of garage door brackets directly to structure through wood jamb:** Brackets for the vertical tracks and flag angles of the door may be attached directly to the wall framing through the wood back jamb with 5/16" x 3-1/2" lag screws as shown in Figure 3. This configuration will eliminate the need for the back jamb to have additional fastenings to the structure due to the load being transferred from the door directly to the wood framed

structure. Track bracket spacing must be as specified in the Installation section of this evaluation report.

4. **Attachment of garage door brackets directly to structure through wood jamb with finishing material behind jamb:** Brackets for the vertical tracks and flag angles of the door may be attached directly to the wall framing through a wood back jamb and wall finishing material with 5/16" x 4" lag screws as shown in Figure 4. This configuration will eliminate the need for the back jamb to have additional fastenings to the structure due to the load being transferred from the door directly to the wood framed structure. Track bracket spacing must be as specified in the Installation section of this evaluation report.
5. **Overlap of jamb trim boards:** Doors that are not required to overlap the jamb may overlap jamb trim boards shown in Figures 3 and 4. Jamb trim boards may also be installed on construction types shown in Figures 1 and 2. Doors requiring 1" overlap must have 1" of overlap extending over the framing studs and (or) the wood back jamb when installed over the framing studs. Framing "studs" may also be concrete or steel.

**Note:** Keep the manufacturer's installation instructions and the design drawings available on the job site during installation. Use corrosion resistant fasteners as specified in the IRC and the IBC.

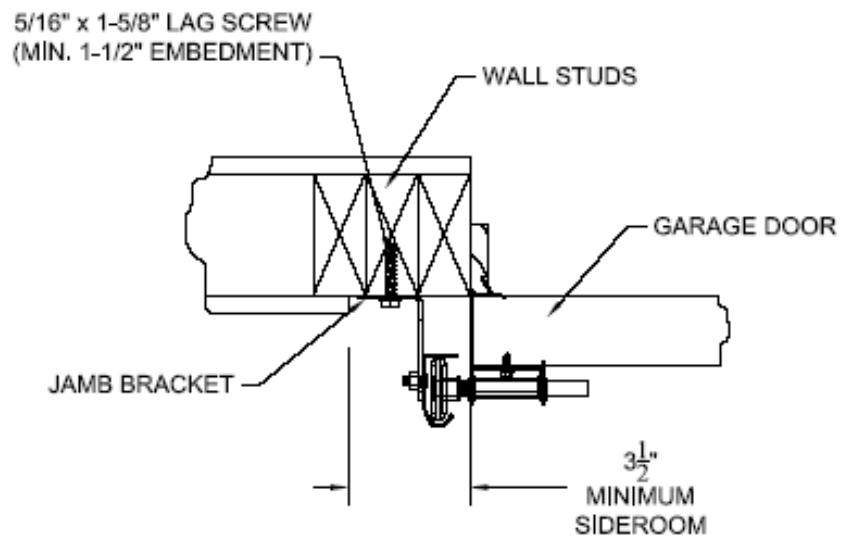


Figure 1: Attachment of garage door brackets directly to wood wall framing (Option 1)

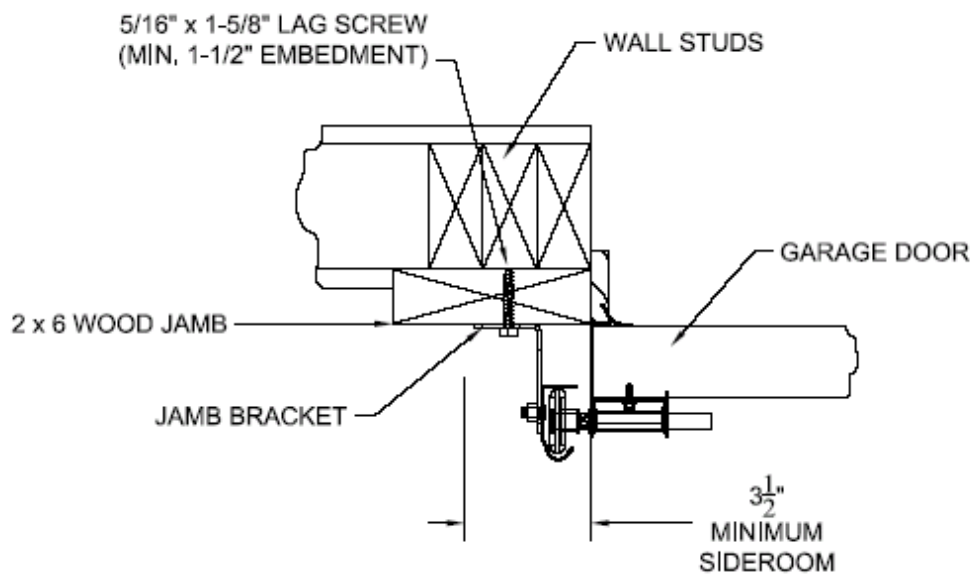


Figure 2: Attachment of garage door brackets directly 2 x 6 wood jamb (Option 2)

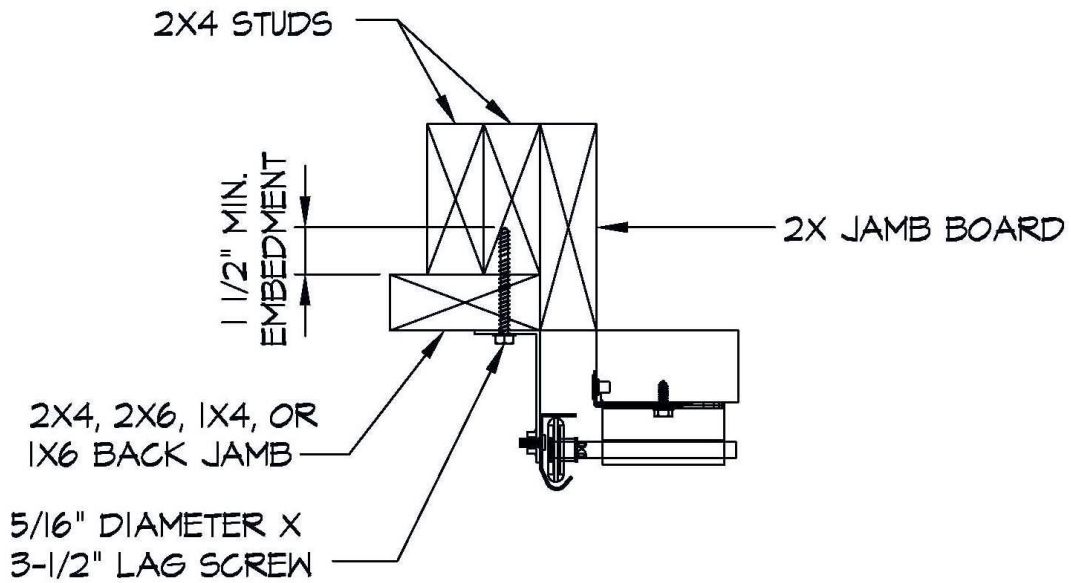


Figure 3: Attachment of garage door brackets directly to structure through wood jamb (Option 3)

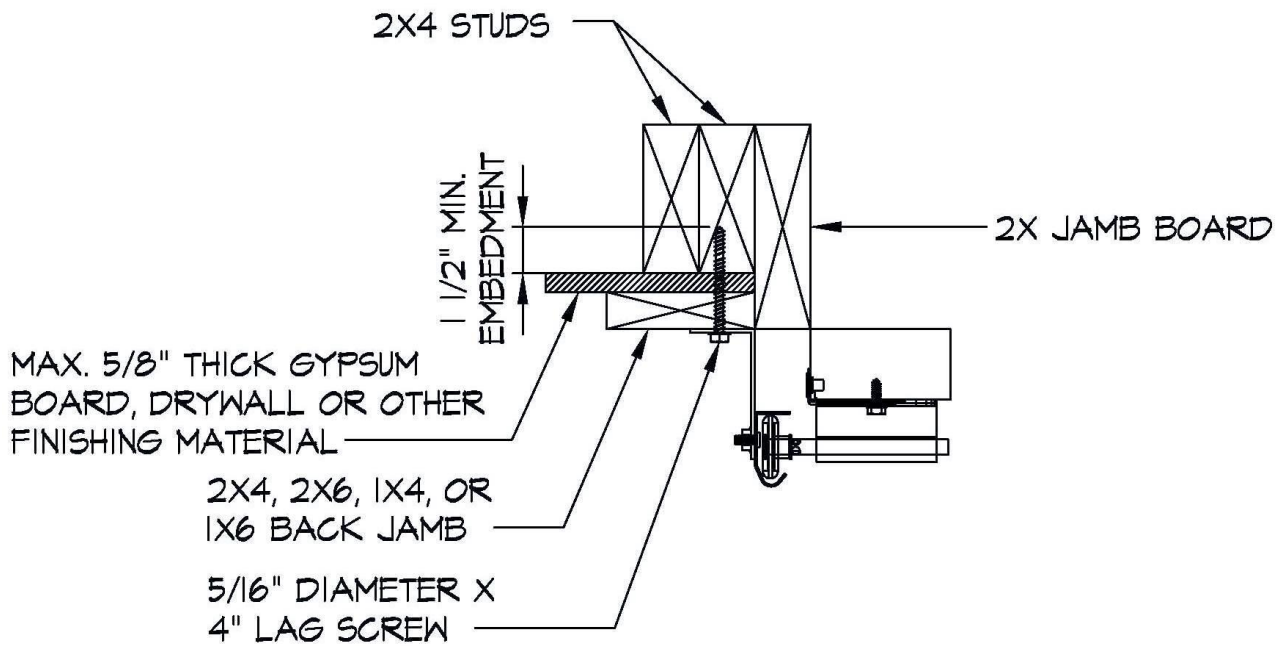


Figure 4: Attachment of garage door brackets directly to structure through wood jamb with finishing material behind jamb (Option 4)

**Table 2**  
**Jamb Attachment to Structure**

| Wall Type          | Bolt Type           | Bolt Diameter         | Anchor Diameter | Hole Diameter | Embedment Length | Bolt Spacing For           |                         |                            |
|--------------------|---------------------|-----------------------|-----------------|---------------|------------------|----------------------------|-------------------------|----------------------------|
|                    |                     |                       |                 |               |                  | 9' wide (9)                | 16' wide (10)           | 18' wide (11)              |
| Concrete           | Hilti Kwik Bolt     | 3/8"                  | 3/8"            | 3/8"          | 2-1/2"           | 24" O.C.<br>(2)            | 24" O.C.<br>(2)         | 24" O.C.<br>(2)            |
|                    | ITW/Ramset Red Head | 3/8"                  | 3/8"            | 3/8"          | 2-1/2"           | 24" O.C.<br>(2)            | 24" O.C.<br>(2)         | 24" O.C.<br>(2)            |
|                    | Hilti Sleeve Anchor | 3/8"                  | 5/16"           | 3/8"          | 1-1/4"           | 24" O.C.<br>(2)            | 24" O.C.<br>(2)         | 16" O.C.<br>(2)            |
| Hollow Block       | ITW/Ramset Tapcon   | 1/4"                  | 1/4"            | 3/16"         | 1-1/4"           | Pair at 16" O.C.<br>(2)(3) | Pair at 16" O.C. (2)(3) | Pair at 12" O.C.<br>(2)(3) |
|                    | Hilti Sleeve Anchor | 3/8"                  | 5/16"           | 3/8"          | 1-1/4"           | 24" O.C.<br>(2)            | 16" O.C.<br>(2)         | 16" O.C.<br>(2)            |
| Wood (5)           | Lag Bolts           | 5/16"                 | 5/16"           | 3/16"         | 1-1/2"           | 24" O.C.<br>(2)            | 16" O.C.<br>(2)         | 16" O.C.<br>(2)            |
| Wood (6)           | Lag Bolts           | 5/16"                 | 5/16"           | 3/16"         | 1-1/2"           | 18" O.C.<br>(2)            | 16" O.C.<br>(2)         | 12" O.C.<br>(2)            |
| Steel (12 Ga. Min) | Hilti Kwik-Pro      | 1/4"-14 x 3/4" HWH #3 |                 | Self-Drilling | N/A              | 12" O.C.<br>(2)            | 16" O.C.<br>(2)         | 16" O.C.<br>(2)            |

## Notes:

- 1) Chart used only when 2 x 6 or 2 x 8 jambs are attached to structure for attachment of track.
- 2) Install first anchor a maximum of 6" from each end of jamb.
- 3) Pair of anchors must be approximately 3" center to center.
- 4) For 9' wide doors maximum allowable design load to jamb is +274 PLF; 16' wide doors maximum allowable design load to jamb is +300 PLF; 18' wide doors maximum allowable design load to jamb is +396 PLF.
- 5) Wood framing members must be Southern Yellow Pine lumber ( $SG \geq 0.55$ ).
- 6) Wood framing members must be Spruce-Pine-Fir Pine lumber ( $SG \geq 0.42$ ).
- 7) Concrete must have minimum  $f'c = 2000$  psi.
- 8) Steel structure members must be minimum 12-gauge (0.1046").
- 9) This chart applies to openings up to 9' wide with maximum design pressures of +60.9 psf.
- 10) This chart applies to openings up to 16' wide with maximum design pressures of +37.5 psf.
- 11) This chart applies to openings up to 18' wide with maximum design pressures of +44.0 psf.



**Table 3**  
**Retail Branding Product Cross Reference Chart**

| Product Brand Name |                                  |                       |                     |  |                               |
|--------------------|----------------------------------|-----------------------|---------------------|--|-------------------------------|
| Amarr Model        | Amarr                            | Reliabilt             | Pella               | Sears  | Champion                      |
| 600                | Stratford 1000                   | Model 300             | Sutherland          | Sears Traditional 1000                                       | Medallion 1000                |
| 600i               | Stratford 2000                   | Model 500             | Sutherland          | Sears Traditional 2000                                       | Medallion 2000                |
| 625                | Lincoln 1000                     | N/A                   | N/A                 | N/A  | N/A                           |
| 625i               | Lincoln 2000                     | N/A                   | N/A                 | N/A  | N/A                           |
| 650                | Oak Summit 1000                  | Model 800             | Onslow              | Steel CH 1000  | Triumph 1000                  |
| 650i               | Oak Summit 2000                  | Model 850             | Onslow              | Steel CH 2000  | Triumph 2000                  |
| 675                | Hillcrest 1000                   | N/A                   | N/A                 | N/A  | N/A                           |
| 675i               | Hillcrest 2000                   | N/A                   | N/A                 | N/A  | N/A                           |
| 950                | Heritage 1000                    | Heritage 1000         | Hillsboro           | Traditional Plus 1000  | Heritage 1000                 |
| 950i               | Heritage 2000                    | Heritage 2000         | Hillsboro           | Traditional Plus 1000  | Heritage 2000                 |
| 1200 & 1200D       | Heritage 3000 / Oak Summit 3000  | Model 700 / Model 800 | Hillsboro / Onslow  | Traditional Plus 3000 / Steel CH 3000                        | Heritage 3000 / Triumph 3000  |
| 1500 & 1500D       | Stratford 3000 / Oak Summit 3000 | Model 700 / Model 860 | Sutherland / Onslow | Sears Traditional 3000 / Steel CH 3000                       | Medallion 3000 / Triumph 3000 |
| 1600               | Lincoln 3000                     | Lincoln 3000          | Ladora              | Sears Traditional 3500                                       | Lincoln 3000                  |
| 1650               | Hillcrest 3000                   | Hillcrest 3000        | Hamilton            | Steel Carriage House 3500                                    | Hillcrest 3000                |
| 500                | Classica 1000                    | 890 Series            | Colesburg           | Premier 1000   | Winner's Circle 1000          |
| 500i               | Classica 2000                    | 900 Series            | Colesburg           | Premier 2000   | Winner's Circle 2000          |
| 3000               | Classica 3000                    | 950 Series            | Colesburg           | Premier 3000   | Winner's Circle 3000          |
| 3500 & 3550        | AFV / Vista                      | N/A                   | Ventura             | N/A  | N/A                           |
| P500, C500, D500   | Olympus Designers Choice         | N/A                   | Otteson / Dansbury  | Traditional Max 4000, 5000 / Steel Carriage House 4000, 5000 | Victory Lane 500              |

**Table 3 (Continued)**  
**Retail Branding Product Cross Reference Chart**

| Product Brand Name |                                  |  |  |                                       |
|--------------------|----------------------------------|--|--|---------------------------------------|
| Amarr Model        | Amarr                            | Precision  | Home Depot   | Orchard Supply                        |
| 600                | Stratford 1000                   | Distinct Precision 100                           | Home Depot Traditional 1000                                  | Vintage Oaks 1000                     |
| 600i               | Stratford 2000                   | Distinct Precision 200                           | Home Depot Traditional 2000                                  | Vintage Oaks 2000                     |
| 650                | Oak Summit 1000                  | Oak Ridge Precision 100                          | Home Depot Carriage House 1000                               | Vintage Oaks 1000                     |
| 650i               | Oak Summit 2000                  | Oak Ridge Precision 200                          | Home Depot Carriage House 1000                               | Turtle Creek 2000                     |
| 950                | Heritage 1000                    | Enduring Precision 100                           | N/A  | Heritage 1000                         |
| 950i               | Heritage 2000                    | Enduring Precision 200                           | N/A  | Heritage 2000                         |
| 1200 & 1200D       | Heritage 3000 / Oak Summit 3000  | Enduring Precision 300 / Oak Ridge Precision 300 | Home Depot Carriage House 3000                               | Heritage 3000 / Turtle Creek 3000     |
| 1500 & 1500D       | Stratford 3000 / Oak Summit 3000 | Distinct Precision 300 / Oak Ridge Precision 300 | Home Depot Traditional 3000 / Home Depot Carriage House 3000 | Vintage Oaks 3000 / Turtle Creek 3000 |
| 3100               | Lincoln 3138                     | N/A  | N/A  | N/A                                   |
| 1600               | Lincoln 3000                     | Lincoln 3000                                     | N/A  | N/A                                   |
| 3150               | Hillcrest 3138                   | N/A  | N/A  | N/A                                   |
| 1650               | Hillcrest 3000                   | Hillcrest 3000                                   | N/A  | N/A                                   |
| 500                | Classica 1000                    | Cambridge Precision 100                          | N/A  | Echo Canyon 1000                      |
| 500i               | Classica 2000                    | Cambridge Precision 200                          | N/A  | Echo Canyon 2000                      |
| 3000               | Classica 3000                    | Cambridge Precision 300                          | Home Depot Carriage House 4000                               | Echo Canyon 3000                      |
| 3500 & 3550        | AFV / Vista                      | N/A  | N/A  | N/A                                   |
| P500, C500, D500   | Olympus / Designers Choice       | Olympus / Designers Choice                       | N/A  | N/A                                   |

**Table 4: Model 600, 650, and 950**

| Door Width (Max.) | Door Height (Max.) | Drawing Number  | Design Pressure (PSF) | Glazing Option | Vertical Reinforcing   | Skin (Min.)         |
|-------------------|--------------------|---|-----------------------|----------------|------------------------|---------------------|
| 9'-0"             | 14'-0"             | IRC-6009-110-11<br>Rev. E, 1-08-13<br>Sealed 1-05-22  | +19.1, -22.6          | Yes            | No                     | Ext.- 24 or 25 ga.  |
| 9'-0"             | 14'-0"             | IRC-6009-120-15<br>Rev. D, 2-08-13<br>Sealed 1-05-22  | +22.8, -26.9          | Yes            | No                     | Ext.- 24 or 25 ga.  |
| 9'-0"             | 14'-0"             | IRC-6009-130-15<br>Rev. C, 3-1-13<br>Sealed 1-05-22   | +26.7, -31.6          | Yes            | No                     | Ext.- 24 or 25 ga.  |
| 9'-0"             | 14'-0"             | IRC-6009-140-15<br>Rev. C, 2-27-13<br>Sealed 1-05-22  | +31.0; -35.1          | Yes            | No                     | Ext.- 24 or 25 ga.  |
| 9'-0"             | 14'-0"             | IRC-6009-150-15<br>Rev. E, 4-5-13<br>Sealed 1-05-22   | +35.6, -42.1          | Yes            | No                     | Ext.- 24 or 25 ga.  |
| 9'-0"             | 14'-0"             | IRC-6009-169-15<br>Rev. E, 4-11-13<br>Sealed 1-05-22  | +45.3, -51.2          | Yes            | No                     | Ext.- 24 or 25 ga.  |
| 16'-0"            | 14'-0"             | IRC-6016-110-15<br>Rev. E, 11-1-12<br>Sealed 1-05-22  | +18.3, -20.8          | Yes            | No                     | Ext.- 24 or 25 ga.  |
| 16'-0"            | 14'-0"             | IRC-6016-120-15<br>Rev. E, 11-06-12<br>Sealed 1-05-22 | +21.8, -24.8          | Yes            | No                     | Ext.- 24 or 25 ga.  |
| 16'-0"            | 14'-0"             | IRC-6016-130-15<br>Rev. E, 11-07-12<br>Sealed 1-05-22 | +25.6, -29.1          | Yes            | No                     | Ext.- 24 or 25 ga.  |
| 16'-0"            | 14'-0"             | IRC-6016-130-15-P<br>5-22-14<br>Sealed 1-05-22        | +25.6; -29.1          | Yes            | No                     | Ext.- 24 or 25 ga.  |
| 16'-0"            | 14'-0"             | IRC-6016-133-17<br>3-3-14<br>Sealed 1-05-22           | +27.4; -30.5          | Yes            | No                     | Ext. 24 or 25 ga.   |
| 16'-0"            | 14'-0"             | IRC-6016-140-24<br>Rev. F, 8-10-15<br>Sealed 1-05-22  | +29.7, -33.8          | Yes            | No                     | Ext.- 24 or 25 ga.  |
| 16'-0"            | 14'-0"             | IRC-6016-145-24<br>Rev. D, 4-6-12<br>Sealed 1-05-22   | +31.9, -37.2          | Yes            | None                   | Ext.- 25 or 24 ga.  |
| 16'-0"            | 8'-0"              | IRC-6016-155-45<br>Rev. B, 4-17-12<br>Sealed 1-05-22  | +37.0, -41.0          | Yes            | Yes; Vertical Post (2) | Ext. - 25 or 24 ga. |
| 18'-0"            | 14'-0"             | IRC-6018-110-15<br>Rev. E, 2-8-17<br>Sealed 1-05-22   | +18.2, -20.6          | Yes            | No                     | Ext. - 25 or 24 ga. |

**Table 4 (Continued): Model 600, 650, and 950**

| Door Width (Max.) | Door Height (Max.) | Drawing Number                                       | Design Pressure (PSF) | Glazing Option | Vertical Reinforcing | Skin (Min.)         |
|-------------------|--------------------|--|-----------------------|----------------|----------------------|---------------------|
| 18'-0"            | 14'-0"             | IRC-6018-120-15<br>Rev. C, 1-14-13<br>Sealed 1-05-22 | +21.6, -24.5          | Yes            | No                   | Ext. - 25 or 24 ga. |
| 18'-0"            | 14'-0"             | IRC-6018-130-24<br>10-01-07<br>Sealed 1-5-22         | +25.4, -28.7          | No             | No                   | Ext. - 25 or 24 ga. |
| 18'-0"            | 14'-0"             | IRC-6018-130-24-L<br>2-09-17<br>Sealed 1-05-22       | +25.4, -28.7          | Yes            | No                   | Ext. - 25 or 24 ga. |
| 18'-0"            | 14'-0"             | IRC-6018-145-26<br>1-10-08<br>Sealed 1-05-22         | +31.6, -35.7          | Yes            | No                   | Ext. - 25 or 24 ga. |

**Table 5: Model 500**

| Door Width (Max.) | Door Height (Max.) | Drawing Number                                 | Design Pressure (PSF) | Glazing Option | Vertical Reinforcing | Skin (Min.)   |
|-------------------|--------------------|--|-----------------------|----------------|----------------------|---------------|
| 9'-0"             | 14'-0"             | IRC-5209-130-15<br>2-04-21<br>Sealed 3-25-21   | +26.7;<br>-31.6       | Yes            | No                   | Ext. - 24 ga. |
| 9'-0"             | 14'-0"             | IRC-5309-110-15<br>1-11-21<br>Sealed 3-25-21   | +19.0;<br>-22.3       | Yes            | No                   | Ext. - 24 ga. |
| 9'-0"             | 8'-0"              | IRC-5309-120-15<br>1-04-21<br>Sealed 3-25-21   | +22.8;<br>-26.9       | Yes            | No                   | Ext. - 24 ga. |
| 9'-0"             | 14'-0"             | IRC-5309-130-15<br>1-06-21<br>Sealed 3-25-21   | +26.7;<br>-31.6       | Yes            | No                   | Ext. - 24 ga. |
| 16'-0"            | 14'-0"             | IRC-5216-140-24<br>2-04-21<br>Sealed 3-25-21   | +29.7;<br>-33.1       | No             | No                   | Ext. - 24 ga. |
| 16'-0"            | 14'-0"             | IRC-5316-110-24<br>6-25-20<br>Sealed 3-22-21   | +18.3;<br>-20.8       | Yes            | No                   | Ext. - 24 ga. |
| 16'-0"            | 14'-0"             | IRC-5316-130-24<br>6-25-20<br>Sealed 3-22-21   | +25.6;<br>-29.1       | No             | No                   | Ext. - 24 ga. |
| 16'-0"            | 14'-0"             | IRC-5316-140-24-T<br>6-17-20<br>Sealed 3-22-21 | +29.3;<br>-33.3       | Yes            | No                   | Ext. - 24 ga. |
| 18'-0"            | 14'-0"             | IRC-5318-110-24<br>7-6-20<br>Sealed 3-22-21    | +18.2;<br>-20.6       | Yes            | No                   | Ext. - 24 ga. |
| 18'-0"            | 14'-0"             | IRC-5318-130-24<br>6-30-20<br>Sealed 3-24-21   | +25.1;<br>-28.4       | Yes            | No                   | Ext. - 24 ga. |

**Table 6: Model 625 and 675**

| Door Width (Max.) | Door Height (Max.) | Drawing Number  | Design Pressure (PSF) | Glazing Option | Vertical Reinforcing | Skin (Min.)   |
|-------------------|--------------------|---|-----------------------|----------------|----------------------|---------------|
| 9'-0"             | 14'-0"             | IRC-6209-110-11<br>Rev A 3-01-22<br>Sealed 4-22-22    | +19.1;<br>-22.6       | Yes            | No                   | Ext. - 25 ga. |
| 9'-0"             | 14'-0"             | IRC-6209-120-15<br>12-19-19<br>Sealed 4-22-22         | +22.8;<br>-26.9       | Yes            | No                   | Ext. - 25 ga. |
| 9'-0"             | 14'-0"             | IRC-6209-130-15<br>Rev A 3-01-22<br>Sealed 4-22-22    | +26.7;<br>-31.6       | Yes            | No                   | Ext. - 25 ga. |
| 9'-0"             | 14'-0"             | IRC-6209-140-15<br>Rev A 3-01-22<br>Sealed 4-22-22    | +31.0<br>-35.1        | Yes            | No                   | Ext. - 25 ga. |
| 9'-0"             | 14'-0"             | IRC-6209-150-15<br>Rev A 3-01-22<br>Sealed 4-22-22    | +35.6<br>-42.1        | Yes            | No                   | Ext. - 25 ga. |
| 9'-0"             | 14'-0"             | IRC-6209-169-15<br>Rev A 3-01-22<br>Sealed 4-22-22    | +45.3<br>-51.2        | Yes            | No                   | Ext. - 25 ga. |
| 16'-0"            | 14'-0"             | IRC-6216-110-15<br>Rev A 3-01-22<br>Sealed 4-22-22    | +21.8<br>-24.8        | Yes            | No                   | Ext. - 25 ga. |
| 16'-0"            | 14'-0"             | IRC-6216-120-15<br>Rev A 3-01-22<br>Sealed 4-22-22    | +18.2<br>-20.8        | Yes            | No                   | Ext. - 25 ga. |
| 16'-0"            | 14'-0"             | IRC-6216-120-15-L<br>Rev. A, 3-1-22<br>Sealed 4-22-22 | +21.8<br>-24.8        | Yes            | No                   | Ext. - 25 ga. |
| 16'-0"            | 14'-0"             | IRC-6216-130-15<br>Rev A 3-01-22<br>Sealed 4-22-22    | +25.6;<br>-29.1       | Yes            | No                   | Ext. - 25 ga. |
| 16'-0"            | 14'-0"             | IRC-6216-130-17-L<br>Rev A 3-01-22<br>Sealed 4-22-22  | +25.6<br>-29.1        | Yes            | No                   | Ext. - 25 ga. |
| 18'-0"            | 14'-0"             | IRC-6218-110-15<br>Rev A 3-01-22<br>Sealed 4-22-22    | +18.2<br>-20.6        | Yes            | No                   | Ext. - 25 ga. |
| 18'-0"            | 14'-0"             | IRC-6218-120-15<br>Rev A 3-01-22<br>Sealed 4-22-22    | +21.6<br>-24.5        | Yes            | No                   | Ext. - 25 ga. |
| 18'-0"            | 14'-0"             | IRC-6218-120-17-L<br>Rev. A, 3-1-22<br>Sealed 4-22-22 | +21.6<br>-24.5        | Yes            | No                   | Ext. - 25 ga. |
| 18'-0"            | 14'-0"             | IRC-6218-130-24<br>Rev A 3-01-22<br>Sealed 4-22-22    | +25.4;<br>-28.7       | Yes            | No                   | Ext. - 25 ga. |
| 18'-0"            | 14'-0"             | IRC-6218-130-24-L<br>Rev A 3-01-22<br>Sealed 4-22-22  | +25.4<br>-28.7        | Yes            | No                   | Ext. - 25 ga. |

**Table 6 (Continued): Model 625 and 675**

| Door Width (Max.) | Door Height (Max.) | Drawing Number                                     | Design Pressure (PSF) | Glazing Option | Vertical Reinforcing | Skin (Min.)   |
|-------------------|--------------------|--|-----------------------|----------------|----------------------|---------------|
| 18'-0"            | 14'-0"             | IRC-6218-145-26<br>Rev A 3-01-22<br>Sealed 4-22-22 | +31.6<br>-35.7        | Yes            | No                   | Ext. - 25 ga. |

**Table 7: Model 1000**

| Door Width (Max.) | Door Height (Max.) | Drawing Number                                | Design Pressure (PSF) | Glazing Option | Vertical Reinforcing | Skin (Min.)                    |
|-------------------|--------------------|---|-----------------------|----------------|----------------------|--------------------------------|
| 9'-2"             | 24'-0"             | IBC-1009-132-00<br>4-02-14<br>Sealed 6-22-21  | +28.1;<br>-29.5       | Yes            | No                   | Ext. 27 or<br>20 ga.           |
| 9'-2"             | 24'-0"             | IBC-1009-150-11<br>8-02-17<br>Sealed 6-22-21  | +32.7;<br>-38.4       | Yes            | No                   | Ext. - 24 ga.<br>Int. - 27 ga  |
| 10'-2"            | 24'-0"             | IBC-1010-116-00<br>3-06-18<br>Sealed 6-22-21  | +19.2;<br>-22.3       | Yes            | No                   | Ext. - 24 ga.<br>Int. - 27 ga  |
| 10'-2"            | 24'-0"             | IBC-1010-130-11<br>12-06-16<br>Sealed 6-22-21 | +24.1;<br>-28.0       | Yes            | No                   | Ext. - 27 ga.<br>Int. - 27 ga  |
| 12'-2"            | 24'-0"             | IBC-1012-120-15<br>2-20-18<br>Sealed 6-22-21  | +20.2;<br>-23.2       | Yes            | No                   | Ext. - 24 ga.<br>Int. - 27 ga  |
| 12'-2"            | 24'-0"             | IBC-1012-130-15<br>12-05-16<br>Sealed 6-22-21 | +23.8;<br>-27.3       | Yes            | No                   | Ext. - 24 ga.<br>Int. - 27 ga  |
| 12'-2"            | 24'-0"             | IBC-1012-150-15<br>7-20-16<br>Sealed 6-22-21  | +32.0;<br>-36.7       | Yes            | No                   | Ext. - 24 ga.<br>Int. - 27 ga  |
| 14'-2"            | 24'-0"             | IBC-1014-120-15<br>3-15-18<br>Sealed 6-22-21  | +20.0;<br>-22.8       | Yes            | No                   | Ext. - 24 ga.<br>Int. - 27 ga  |
| 14'-2"            | 24'-0"             | IBC-1014-130-15<br>3-08-18<br>Sealed 6-22-21  | +23.5;<br>-26.7       | Yes            | No                   | Ext. - 24 ga.<br>Int. - 27 ga  |
| 14'-2"            | 24'-0"             | IBC-1014-150-15<br>6-06-17<br>Sealed 6-22-21  | +31.5;<br>-35.9       | Yes            | No                   | Ext. - 24 ga.<br>Int. - 27 ga  |
| 16'-2"            | 24'-0"             | IBC-1016-120-15<br>6-14-18<br>Sealed 4-21-22  | +20.0<br>-22.4        | Yes            | No                   | Ext. - 24 ga.<br>Int. - 27 ga. |
| 16'-2"            | 24'-0"             | IBC-1016-130-15<br>6-28-11<br>Sealed 6-22-21  | +23.3;<br>-26.3       | Yes            | No                   | Ext. - 24 ga.<br>Int. - 27 ga. |
| 16'-2"            | 24'-0"             | IBC-1016-150-26<br>9-22-18<br>Sealed 4-21-22  | +31.2<br>-35.3        | Yes            | No                   | Ext. - 24 ga.<br>Int. - 27 ga. |

**Table 7 (Continued): Model 1000**

| Door Width (Max.) | Door Height (Max.) | Drawing Number                               | Design Pressure (PSF) | Glazing Option | Vertical Reinforcing | Skin (Min.)                    |
|-------------------|--------------------|--|-----------------------|----------------|----------------------|--------------------------------|
| 16'-2"            | 24'-0"             | IBC-1018-130-24<br>4-05-17<br>Sealed 6-22-21 | +23.3;<br>-26.0       | Yes            | No                   | Ext. - 24 ga.<br>Int. - 27 ga. |

**Table 8: Model 1350**

| Door Width (Max.) | Door Height (Max.) | Drawing Number                               | Design Pressure (PSF) | Glazing Option | Vertical Reinforcing | Skin (Min.)                    |
|-------------------|--------------------|--|-----------------------|----------------|----------------------|--------------------------------|
| 9'-2"             | 24'-0"             | IBC-1309-133-11<br>5-1-18<br>Sealed 6-21-21  | +25.5;<br>-30.0       | Yes            | No                   | Ext. - 27 ga.<br>Int. - 27 ga. |
| 9'-2"             | 24'-0"             | IBC-1309-150-15<br>4-19-18<br>Sealed 6-21-21 | +32.6;<br>-38.2       | Yes            | No                   | Ext. - 27 ga.<br>Int. - 27 ga. |
| 12'-2"            | 24'-0"             | IBC-1312-133-15<br>4-13-18<br>Sealed 6-21-21 | +25.0;<br>-28.7       | Yes            | No                   | Ext. - 27 ga.<br>Int. - 27 ga. |
| 12'-2"            | 24'-0"             | IBC-1312-150-15<br>4-13-18<br>Sealed 6-21-21 | +32.0;<br>-36.7       | Yes            | No                   | Ext. - 27 ga.<br>Int. - 27 ga. |
| 14'-2"            | 24'-0"             | IBC-1314-130-15<br>3-13-18<br>Sealed 6-21-21 | +23.5;<br>-26.7       | Yes            | No                   | Ext. - 27 ga.<br>Int. - 27 ga. |
| 14'-2"            | 24'-0"             | IBC-1314-150-15<br>3-13-18<br>Sealed 6-21-21 | +31.5;<br>-35.9       | Yes            | No                   | Ext. - 27 ga.<br>Int. - 27 ga. |
| 16'-2"            | 24'-0"             | IBC-1316-130-15<br>1-16-15<br>Sealed 6-21-21 | +23.3;<br>-26.3       | Yes            | No                   | Ext. - 27 ga.<br>Int. - 27 ga. |
| 16'-2"            | 24'-0"             | IBC-1316-133-15<br>1-16-15<br>Sealed 6-21-21 | +24.4;<br>-27.7       | Yes            | No                   | Ext. - 27 ga.<br>Int. - 27 ga. |

**Table 9: Model 3000**

| Door Width (Max.) | Door Height (Max.) | Drawing Number                               | Design Pressure (PSF) | Glazing Option | Vertical Reinforcing | Skin (Min.)                    |
|-------------------|--------------------|--|-----------------------|----------------|----------------------|--------------------------------|
| 9'-0"             | 14'-0"             | IRC-3309-140-15<br>1-20-21<br>Sealed 3-24-21 | +31.0;<br>-35.1       | Yes            | No                   | Ext. - 27 ga.<br>Int. - 27 ga. |
| 16'-0"            | 14'-0"             | IRC-3316-120-17<br>5-28-20<br>Sealed 3-22-21 | +21.8;<br>-24.8       | Yes            | No                   | Ext. - 27 ga.<br>Int. - 27 ga. |
| 16'-0"            | 14'-0"             | IRC-3316-130-24<br>5-28-21<br>Sealed 3-24-21 | +25.3;<br>-28.8       | Yes            | No                   | Ext. - 27 ga.<br>Int. - 27 ga. |

**Table 9 (Continued): Model 3000**

| Door Width (Max.) | Door Height (Max.) | Drawing Number                               | Design Pressure (PSF) | Glazing Option | Vertical Reinforcing | Skin (Min.)                    |
|-------------------|--------------------|--|-----------------------|----------------|----------------------|--------------------------------|
| 16'-0"            | 14'-0"             | IRC-3316-140-24<br>6-15-20<br>Sealed 3-24-21 | +25.3;<br>-28.8       | Yes            | No                   | Ext. - 27 ga.<br>Int. - 27 ga. |

**Table 10: Model P500, C500, and D500**

| Door Width (Max.) | Door Height (Max.) | Drawing Number                                | Design Pressure (PSF) | Glazing Option | Vertical Reinforcing | Skin (Min.)                    |
|-------------------|--------------------|---|-----------------------|----------------|----------------------|--------------------------------|
| 9'-2"             | 14'-0"             | IRC-P509-120-11<br>8-01-16<br>Sealed 1-05-22  | +22.8;<br>-26.9       | Yes            | No                   | Ext. - 27 ga.<br>Int. - 27 ga. |
| 9'-2"             | 14'-0"             | IRC-C509-120-11<br>11-18-15<br>Sealed 1-05-22 | +22.8;<br>-26.9       | Yes            | No                   | Ext. - 27 ga.<br>Int. - 27 ga. |
| 9'-2"             | 14'-0"             | IRC-P509-130-11<br>12-06-17<br>Sealed 1-05-22 | +26.7;<br>-31.6       | Yes            | No                   | Ext. - 27 ga.<br>Int. - 27 ga. |
| 16'-2"            | 14'-0"             | IRC-P516-110-15<br>8-1-16<br>Sealed 1-05-22   | +18.3;<br>-20.8       | Yes            | No                   | Ext. - 27 ga.<br>Int. - 27 ga. |
| 16'-2"            | 14'-0"             | IRC-C516-110-15<br>10-20-15<br>Sealed 1-05-22 | +18.3;<br>-20.8       | Yes            | No                   | Ext. - 27 ga.<br>Int. - 27 ga. |
| 16'-2"            | 14'-0"             | IRC-C516-130-15<br>8-03-17<br>Sealed 1-05-22  | +25.6;<br>-29.1       | Yes            | No                   | Ext. - 27 ga.<br>Int. - 27 ga. |
| 18'-2"            | 14'-0"             | IRC-P518-110-15<br>8-1-16<br>Sealed 1-05-22   | +18.2;<br>-20.6       | Yes            | No                   | Ext. - 27 ga.<br>Int. - 27 ga. |
| 18'-2"            | 14'-0"             | IRC-C518-110-15<br>10-19-15<br>Sealed 1-05-22 | +18.2;<br>-20.6       | Yes            | No                   | Ext. - 27 ga.<br>Int. - 27 ga. |

**Table 11: Model 2700 and 2720**

| Door Width (Max.) | Door Height (Max.) | Drawing Number                                  | Design Pressure (PSF) | Glazing Option | Vertical Reinforcing | Skin (Min.)   |
|-------------------|--------------------|---|-----------------------|----------------|----------------------|---|
| 9'-2"             | 24'-0"             | IBC-2709-140-11-A<br>10-17-17<br>Sealed 6-21-21 | +28.1;<br>-33.0       | Yes            | No                   | Ext. - 27 or 20 ga.<br>Int. - 27 ga. /<br>6063-T6; 0.050"<br>Extruded<br>Aluminum |
| 9'-2"             | 24'-0"             | IBC-2709-150-11<br>2-18-16<br>Sealed 6-21-21    | +32.6;<br>-38.3       | Yes            | No                   | Ext. - 27 or 20 ga.<br>Int. - 27 ga.  |



**Table 11 (Continued): Model 2700 and 2720**

| Door Width (Max.) | Door Height (Max.) | Drawing Number                                  | Design Pressure (PSF) | Glazing Option | Vertical Reinforcing | Skin (Min.)   |
|-------------------|--------------------|---|-----------------------|----------------|----------------------|---|
| 10'-2"            | 24'-0"             | IRC-2710-130-00<br>4-20-18<br>Sealed 6-21-21    | +24.1;<br>-28.0       | Yes            | No                   | Ext. - 27 or 20 ga.<br>Int. - 27 ga.  |
| 10'-2"            | 24'-0"             | IRC-2710-150-11<br>4-20-18<br>Sealed 6-21-21    | +32.1;<br>-37.3       | Yes            | No                   | Ext. - 27 or 20 ga.<br>Int. - 27 ga.  |
| 12'-2"            | 24'-0"             | IRC-2712-130-15<br>4-16-18<br>Sealed 6-21-21    | +23.8;<br>-27.3       | Yes            | No                   | Ext. - 27 or 20 ga.<br>Int. - 27 ga.  |
| 12'-2"            | 24'-0"             | IRC-2712-140-63-A<br>10-18-17<br>Sealed 6-21-21 | +27.6;<br>-31.6       | Yes            | No                   | Ext. - 27 or 20 ga.<br>Int. - 27 ga. /<br>6063-T6; 0.050"<br>Extruded<br>Aluminum |
| 12'-2"            | 24'-0"             | IBC-2712-150-15<br>4-6-16<br>Sealed 6-21-21     | +32.0;<br>-36.7       | Yes            | No                   | Ext. - 27 or 20 ga.<br>Int. - 27 ga.  |
| 16'-2"            | 24'-0"             | IBC-2716-150-24<br>2-09-16<br>Sealed 6-21-21    | +31.3;<br>-35.4       | Yes            | No                   | Ext. - 27 or 20 ga.<br>Int. - 27 ga.  |
| 18'-2"            | 24'-0"             | IRC-2718-120-15<br>7-18-13<br>Sealed 6-21-21    | +21.6;<br>-24.5       | No             | No                   | Ext. - 27 or 20 ga.<br>Int. - 27 ga.  |

**Table 12: Model 2000, 2400, and 2500**

| Door Width (Max.) | Door Height (Max.) | Drawing Number                                  | Design Pressure (PSF) | Glazing Option | Vertical Reinforcing | Skin (Min.)  |
|-------------------|--------------------|---|-----------------------|----------------|----------------------|--|
| 9'-2"             | 24'-0"             | IBC-2509-130-15<br>1-22-15<br>Sealed 6-16-21    | +24.3;<br>-28.4       | Yes            | No                   | Ext.-25, 24 or<br>20 ga.   |
| 9'-2"             | 24'-0"             | IBC-2009-130-11<br>1-19-17<br>Sealed 6-16-21    | +24.3;<br>-28.4       | Yes            | No                   | Ext.-20 ga.  |
| 9'-4"             | 24'-0"             | IBC-2009-130-11-R<br>5-23-18<br>Sealed 6-16-21  | +24.2;<br>-28.4       | Yes            | No                   | Ext.-20 ga.  |
| 9'-2"             | 24'-0"             | IBC-2509-130-15-R<br>8-02-17<br>Sealed 6-16-21  | +24.2;<br>-28.4       | Yes            | No                   | Ext. 25, 24 or<br>20 ga.   |
| 9'-2"             | 24'-0"             | IBC-2509-140-15-A<br>10-18-17<br>Sealed 6-16-21 | +28.1;<br>-33.0       | Yes            | No                   | Ext. 25, 24 or<br>20 ga. / 6063-<br>T6; 0.050"<br>Extruded<br>Aluminum |

**Table 12 (Continued): Model 2000, 2400, and 2500**

| Door Width (Max.) | Door Height (Max.) | Drawing Number                                       | Design Pressure (PSF) | Glazing Option | Vertical Reinforcing | Skin (Min.)   |
|-------------------|--------------------|--|-----------------------|----------------|----------------------|---|
| 9'-2"             | 24'-0"             | IBC-2509-150-15<br>1-30-15<br>Sealed 6-16-21         | +32.6;<br>-38.3       | Yes            | No                   | Ext. 25, 24 or 20 ga.                                     |
| 9'-2"             | 24'-0"             | IBC-2009-150-11<br>1-19-17<br>Sealed 6-16-21         | +32.7;<br>-38.4       | Yes            | No                   | Ext.-20 ga.   |
| 9'-2"             | 24'-0"             | IBC-2009-150-11-R<br>6-04-18<br>Sealed 6-16-21       | +32.5;<br>-38.1       | Yes            | No                   | Ext.-20 ga.   |
| 9'-2"             | 24'-0"             | IBC-2409-150-11<br>2-09-15<br>Sealed 6-16-21         | +32.7;<br>-38.4       | Yes            | No                   | Ext.- 24 or 20 ga.  |
| 9'-2"             | 24'-0"             | IBC-2509-150-15-R<br>5-31-16<br>Sealed 6-16-21       | +32.7;<br>-38.4       | Yes            | No                   | Ext. 25, 24 or 20 ga.                                     |
| 10'-2"            | 24'-0"             | IBC-2410-130-15<br>Rev. A, 4-22-14<br>Sealed 6-16-21 | +24.1;<br>-28.1       | Yes            | No                   | Ext.- 24 or 20 ga.  |
| 10'-2"            | 24'-0"             | IBC-2410-145-15<br>1-21-15<br>Sealed 6-16-21         | +30.0;<br>-34.9       | Yes            | No                   | Ext.- 24 or 20 ga.  |
| 10'-2"            | 24'-0"             | IBC-2410-150-15<br>Rev. A, 5-7-14<br>Sealed 6-16-21  | +32.1;<br>-37.3       | Yes            | No                   | Ext.- 24 or 20 ga.  |
| 12'-2"            | 24'-0"             | IBC-2412-120-15<br>3-19-18<br>Sealed 6-16-21         | +20.2;<br>-23.2       | Yes            | No                   | Ext.- 24 or 20 ga.  |
| 12'-2"            | 24'-0"             | IBC-2412-130-15<br>Rev. A, 5-22-14<br>Sealed 6-16-21 | +23.8;<br>-27.3       | Yes            | No                   | Ext.- 24 or 20 ga.  |
| 12'-2"            | 24'-0"             | IBC-2512-140-63-A<br>10-18-17<br>Sealed 6-16-21      | +27.6;<br>-31.6       | Yes            | No                   | Ext. 25, 24 or 20 ga. / 6063-T6; 0.050" Extruded Aluminum |
| 12'-2"            | 24'-0"             | IBC-2412-140-63-A<br>5-3-18<br>Sealed 6-16-21        | +27.6;<br>-31.6       | Yes            | No                   | Ext. 25, 24 or 20 ga. / 6063-T6; 0.050" Extruded Aluminum |
| 12'-2"            | 24'-0"             | IBC-2412-145-24<br>10-6-14<br>Sealed 6-16-21         | +29.6;<br>-34.0       | Yes            | No                   | Ext.- 24 or 20 ga.  |
| 12'-2"            | 24'-0"             | IBC-2412-150-15<br>Rev. A, 6-5-14<br>Sealed 6-16-21  | +31.7;<br>-36.4       | Yes            | No                   | Ext.- 24 or 20 ga.  |

**Table 12 (Continued): Model 2000, 2400, and 2500**

| Door Width (Max.) | Door Height (Max.) | Drawing Number                                       | Design Pressure (PSF) | Glazing Option | Vertical Reinforcing | Skin (Min.)           |
|-------------------|--------------------|--|-----------------------|----------------|----------------------|-----------------------|
| 14'-2"            | 24'-0"             | IBC-2414-120-15<br>1-30-18<br>Sealed 6-16-21         | +20.0;<br>-22.8       | Yes            | No                   | Ext.-24 or 20 ga.     |
| 14'-2"            | 24'-0"             | IBC-2414-130-24<br>6-28-18<br>Sealed 6-16-21         | +23.5;<br>-26.7       | Yes            | No                   | Ext.-24 or 20 ga.     |
| 14'-2"            | 24'-0"             | IBC-2414-145-24<br>1-22-15<br>Sealed 6-16-21         | +29.2; -<br>33.3      | Yes            | No                   | Ext.-24 or 20 ga.     |
| 16'-2"            | 24'-0"             | IBC-2516-130-24<br>1-22-15<br>Sealed 6-16-21         | +23.3;<br>-26.3       | Yes            | No                   | Ext. 25, 24 or 20 ga. |
| 16'-2"            | 24'-0"             | IBC-2416-130-24<br>Rev. A, 6-12-14<br>Sealed 6-16-21 | +23.3;<br>-26.3       | Yes            | No                   | Ext.- 24 or 20 ga.    |
| 16'-2"            | 24'-0"             | IBC-2416-140-24<br>Rev. A, 6-18-14<br>Sealed 6-16-21 | +27.0;<br>-30.6       | Yes            | No                   | Ext.- 24 or 20 ga.    |
| 16'-2"            | 24'-0"             | IBC-2516-150-26<br>2-10-15<br>Sealed 6-16-21         | +31.4;<br>-35.5       | Yes            | No                   | Ext. 25, 24 or 20 ga. |
| 18'-2"            | 24'-1"             | IBC-2418-145-26<br>1-30-15<br>Sealed 6-16-21         | +28.7;<br>-32.3       | Yes            | No                   | Ext.- 24 or 20 ga.    |
| 24'-2"            | 24'-1"             | IBC-2424-118-26<br>8-27-14<br>Sealed 6-16-21         | +18.5,<br>-20.7       | Yes            | No                   | Ext. - 20 or 24 ga.   |

**Table 13: Model 1380**

| Door Width (Max.) | Door Height (Max.) | Drawing Number                                | Design Pressure (PSF) | Glazing Option | Vertical Reinforcing | Skin (Min.)                    |
|-------------------|--------------------|---|-----------------------|----------------|----------------------|--------------------------------|
| 9'-2"             | 24'-0"             | IBC-1809-136-15<br>11-25-14<br>Sealed 6-22-21 | +26.4;<br>-31.1       | Yes            | No                   | Ext. - 27 ga.<br>Int. - 27 ga. |
| 16'-2"            | 24'-0"             | IBC-1816-136-15<br>11-24-14<br>Sealed 6-22-21 | +25.3;<br>-28.7       | Yes            | No                   | Ext. - 27 ga.<br>Int. - 27 ga. |
| 18'-2"            | 24'-0"             | IBC-1818-136-26<br>12-8-14<br>Sealed 6-22-21  | +25.1;<br>-28.4       | Yes            | No                   | Ext. - 27 ga.<br>Int. - 27 ga. |

**Table 14: Model 1200, 1500 and 1550**

| Door Width (Max.) | Door Height (Max.) | Drawing Number                                       | Design Pressure (PSF) | Glazing Option | Vertical Reinforcing | Skin (Min.)                    |
|-------------------|--------------------|--|-----------------------|----------------|----------------------|--------------------------------|
| 9'-0"             | 14'-0"             | IRC-1509-120-15<br>7-07-12<br>Sealed 6-22-21         | +22.8;<br>-26.9       | Yes            | No                   | Ext. - 27 ga.<br>Int. - 27 ga. |
| 9'-0"             | 14'-0"             | IRC-1209-130-11<br>7-28-14<br>Sealed 1-05-22         | +26.7;<br>-31.6       | Yes            | No                   | Ext. - 27 ga.<br>Int. - 27 ga. |
| 9'-0"             | 14'-0"             | IRC-1209-130-11-M<br>1-31-18<br>Sealed 1-05-22       | +26.7;<br>-31.6       | Yes            | No                   | Ext. - 27 ga.<br>Int. - 27 ga. |
| 9'-0"             | 14'-0"             | IRC-1509-130-15<br>6-22-12<br>Sealed 6-22-21         | +26.7;<br>-30.7       | Yes            | No                   | Ext. - 27 ga.<br>Int. - 27 ga. |
| 9'-0"             | 8'-0"              | IRC-1509-140-15<br>3-1-12<br>Sealed 6-22-21          | +31.0;<br>-35.1       | Yes            | No                   | Ext. - 27 ga.<br>Int. - 27 ga. |
| 16'-0"            | 14'-0"             | IRC-1216-130-15<br>3-14-22<br>Sealed 5-09-22         | +25.6;<br>-29.1       | Yes            | No                   | Ext. - 24 ga.<br>Int. - 27 ga  |
| 16'-0"            | 14'-0"             | IRC-1216-130-15-M<br>6-5-18<br>Sealed 1-05-22        | +25.6;<br>-29.1       | Yes            | No                   | Ext. - 24 ga.<br>Int. - 27 ga  |
| 16'-0"            | 14'-0"             | IRC-1516-110-15<br>4-22-14<br>Sealed 6-22-21         | +18.3;<br>-20.8       | Yes            | No                   | Ext. - 27 ga.<br>Int. - 27 ga  |
| 16'-0"            | 14'-0"             | IRC-1516-120-15<br>5-7-14<br>Sealed 6-22-21          | +21.8;<br>-24.8       | Yes            | No                   | Ext. - 27 ga.<br>Int. - 27 ga  |
| 16'-0"            | 14'-0"             | IRC-1216-120-15-M<br>3-7-22<br>Sealed 5-09-22        | +21.8;<br>-24.8       | Yes            | No                   | Ext. - 27 ga.<br>Int. - 27 ga  |
| 16'-0"            | 14'-0"             | IRC-1516-130-15<br>Rev. A, 5-07-13<br>Sealed 6-22-21 | +25.6;<br>-29.1       | Yes            | No                   | Ext. - 27 ga.<br>Int. - 27 ga. |
| 16'-0"            | 14'-0"             | IRC-1216-140-24<br>3-09-22<br>Sealed 4-12-22         | +29.7;<br>-33.8       | No             | No                   | Ext. - 27 ga.<br>Int. - 27 ga. |
| 18'-0"            | 14'-0"             | IRC-1518-110-15<br>6-5-14<br>Sealed 6-22-21          | +18.2;<br>-20.6       | Yes            | No                   | Ext. - 27 ga.<br>Int. - 27 ga. |
| 18'-0"            | 14'-0"             | IRC-1218-130-24<br>7-10-14<br>Sealed 1-05-22         | +25.4;<br>-28.7       | Yes            | No                   | Ext. - 27 ga.<br>Int. - 27 ga. |
| 18'-0"            | 14'-0"             | IRC-1218-130-24-M<br>7-25-18<br>Sealed 1-05-22       | +25.4;<br>-28.7       | Yes            | No                   | Ext. - 24 ga.<br>Int. - 27 ga. |

**Table 14 (Continued): Model 1200, 1500 and 1550**

| Door Width (Max.) | Door Height (Max.) | Drawing Number                                       | Design Pressure (PSF) | Glazing Option | Vertical Reinforcing | Skin (Min.)                    |
|-------------------|--------------------|--|-----------------------|----------------|----------------------|--------------------------------|
| 18'-0"            | 14'-0"             | IRC-1518-120-24<br>11-24-13<br>Sealed 6-22-21        | +21.6;<br>-24.5       | Yes            | No                   | Ext. – 27 ga.<br>Int. – 27 ga. |
| 18'-0"            | 14'-0"             | IRC-1518-130-24<br>9-24-13<br>Sealed 6-22-21         | +25.4;<br>-28.7       | Yes            | No                   | Ext. – 27 ga.<br>Int. – 27 ga. |
| 18'-0"            | 8'-0"              | IRC-1518-155-45<br>Rev D, 08-20-19<br>Sealed 6-22-21 | +37.0;<br>-40.6       | No             | No                   | Ext. – 27 ga.<br>Int. – 27 ga. |

**Table 15: Model 1480**

| Door Width (Max.) | Door Height (Max.) | Drawing Number                                | Design Pressure (PSF) | Glazing Option | Vertical Reinforcing | Skin (Min.)                    |
|-------------------|--------------------|---|-----------------------|----------------|----------------------|--------------------------------|
| 9'-2"             | 14'-0"             | IRC-1409-130-15<br>11-25-14<br>Sealed 1-05-22 | +26.4;<br>-31.1       | Yes            | No                   | Ext. - 27 ga.                  |
| 16'-2"            | 14'-0"             | IRC-1416-130-15<br>11-20-14<br>Sealed 1-05-22 | +25.3;<br>-28.7       | Yes            | No                   | Ext. - 27 ga.                  |
| 18'-2"            | 14'-0"             | IRC-1418-130-26<br>12-08-14<br>Sealed 1-05-22 | +25.1;<br>-28.4       | Yes            | No                   | Ext. - 27 ga.<br>Int. – 27 ga. |

**Table 16: Model 1600, 1650, 3100, and 3150**

| Door Width (Max.) | Door Height (Max.) | Drawing Number                                     | Design Pressure (PSF) | Glazing Option | Vertical Reinforcing | Skin (Min.)                    |
|-------------------|--------------------|--|-----------------------|----------------|----------------------|--------------------------------|
| 9'-0"             | 14'-0"             | IRC-3109-120-11<br>12-12-18<br>Sealed 6-22-21      | +22.8;<br>-26.9       | Yes            | No                   | Ext. – 27 ga.<br>Int. – 27 ga. |
| 9'-0"             | 14'-0"             | IRC-3109-130-15<br>12-12-18<br>Sealed 6-22-21      | +26.7;<br>-31.6       | Yes            | No                   | Ext. – 27 ga.<br>Int. – 27 ga. |
| 9'-0"             | 14'-0"             | IRC-1609-130-15<br>5-21-13<br>Sealed 1-05-22       | +26.7;<br>-31.6       | Yes            | No                   | Ext. – 27 ga.<br>Int. – 27 ga. |
| 9'-0"             | 14'-0"             | IRC-3109-140-15<br>Rev A 3-01-22<br>Sealed 4-21-22 | +31.0;<br>-35.1       | Yes            | No                   | Ext. – 27 ga.<br>Int. – 27 ga. |

**Table 16 (Continued): Model 1600, 1650, 3100, and 3150**

| Door Width (Max.) | Door Height (Max.) | Drawing Number                                     | Design Pressure (PSF) | Glazing Option | Vertical Reinforcing | Skin (Min.)                    |
|-------------------|--------------------|--|-----------------------|----------------|----------------------|--------------------------------|
| 16'-0"            | 14'-0"             | IRC-3116-110-15<br>Rev A 3-01-22<br>Sealed 4-22-22 | +18.3;<br>-20.8       | Yes            | No                   | Ext. – 27 ga.<br>Int. – 27 ga. |
| 16'-0"            | 14'-0"             | IRC-3116-120-15<br>12-12-18<br>Sealed 6-22-21      | +21.8;<br>-24.8       | Yes            | No                   | Ext. – 27 ga.<br>Int. – 27 ga. |
| 16'-0"            | 14'-0"             | IRC-3116-130-15<br>12-20-18<br>Sealed 6-22-21      | +25.6;<br>-29.1       | Yes            | No                   | Ext. – 27 ga.<br>Int. – 27 ga. |
| 16'-0"            | 14'-0"             | IRC-1616-130-15<br>12-19-11<br>Sealed 1-05-22      | +25.6;<br>-29.1       | Yes            | No                   | Ext. – 27 ga.<br>Int. – 27 ga. |
| 18'-0"            | 14'-0"             | IRC-3118-110-15<br>1-23-19<br>Sealed 6-22-21       | +18.2;<br>-20.6       | Yes            | No                   | Ext. – 27 ga.<br>Int. – 27 ga. |
| 18'-0"            | 14'-0"             | IRC-3118-120-24<br>2-8-19<br>Sealed 6-22-21        | +21.6;<br>-24.5       | Yes            | No                   | Ext. – 27 ga.<br>Int. – 27 ga. |
| 18'-0"            | 14'-0"             | IRC-3118-130-24<br>1-23-19<br>Sealed 6-22-21       | +25.4;<br>-28.7       | Yes            | No                   | Ext. – 27 ga.<br>Int. – 27 ga. |
| 18'-0"            | 14'-0"             | IRC-1618-130-24<br>Rev A 2-28-22<br>Sealed 4-21-22 | +25.4;<br>-28.7       | Yes            | No                   | Ext. – 27 ga.<br>Int. – 27 ga. |

**Table 17: Model 3500 and 3550**

| Door Width (Max.) | Door Height (Max.) | Drawing Number                                | Design Pressure (PSF) | Glazing Option | Vertical Reinforcing | Skin (Min.)   |
|-------------------|--------------------|---|-----------------------|----------------|----------------------|---|
| 9'-2"             | 24'-1"             | IBC-3609-140-00<br>4-14-10<br>Sealed 4-21-22  | +28.2<br>-33.1        | Yes            | No                   | 6063-T6; 0.050"<br>Extruded<br>Aluminum                       |
| 10'-2"            | 24'-0"             | IBC-3610-136-00<br>12-06-17<br>Sealed 6-21-21 | +26.2;<br>-30.6       | Yes            | No                   | 6063-T6; 0.050"<br>Extruded<br>Aluminum                       |
| 10'-2"            | 24'-0"             | IBC-2450-140-63<br>12-06-16<br>Sealed 6-16-21 | +27.9;<br>-32.5       | Yes            | No                   | Ext. 24 or 20 ga<br>/ 6063-T6;<br>0.050" Extruded<br>Aluminum |
| 12'-2"            | 24'-0"             | IBC-2452-130-15<br>5-23-12<br>Sealed 6-16-21  | +26.8;<br>-29.5       | Yes            | No                   | Ext. 24 or 20 ga<br>/ 6063-T6;<br>0.050" Extruded<br>Aluminum |
| 12'-2"            | 24'-1"             | IBC-3612-140-63<br>8-12-14<br>Sealed 1-05-22  | +27.6;<br>-31.7       | No             | No                   | Ext. 24 or 20 ga<br>/ 6063-T6;<br>0.050" Extruded<br>Aluminum |

**Table 17 (Continued): Model 3500 and 3550**

| <b>Door Width<br/>(Max.)</b> | <b>Door<br/>Height<br/>(Max.)</b> | <b>Drawing Number</b>                                | <b>Design<br/>Pressure<br/>(PSF)</b> | <b>Glazing<br/>Option</b> | <b>Vertical<br/>Reinforcing</b> | <b>Skin<br/>(Min.)</b>   |
|------------------------------|-----------------------------------|--|--------------------------------------|---------------------------|---------------------------------|--|
| 16'-2"                       | 24'-1"                            | IBC-3516-120-15<br>Rev. B, 5-10-21<br>Sealed 6-21-21 | +19.8;<br>-22.4                      | Yes                       | No                              | Ext. 24 or 20 ga.  |
| 16'-2"                       | 24'-0"                            | IBC-2456-110-15<br>9-30-10<br>Sealed 4-21-22         | +16.7<br>-18.9                       | Yes                       | No                              | Ext.- 24 or 20<br>ga/<br>6063-T6; 0.050"<br>Extruded<br>Aluminum |
| 16'-2"                       | 24'-1"                            | IBC-3616-110-63<br>5-13-10<br>Sealed 4-21-22         | +16.7<br>-18.9                       | Yes                       | No                              | 6063-T6; 0.050"<br>Extruded<br>Aluminum                          |
| 16'-2"                       | 24'-1"                            | IBC-3616-130-63<br>6-17-10<br>Sealed 6-21-21         | +23.5<br>-26.7                       | Yes                       | No                              | 6063-T6; 0.050"<br>Extruded<br>Aluminum                          |
| 16'-2"                       | 24'-1"                            | IBC-3616-150-63<br>6-06-18<br>Sealed 6-21-21         | +31.2;<br>-35.3                      | No                        | No                              | 6063-T6; 0.050"<br>Extruded<br>Aluminum                          |
| 18'-2"                       | 24'-1"                            | IBC-3618-132-63<br>10-3-17<br>Sealed 6-21-21         | +23.8;<br>-26.8                      | Yes                       | No                              | 6063-T6; 0.050"<br>Extruded<br>Aluminum                          |