

**NOTES:**

1. GLAZING OPTION - .125" MINIMUM ANNEALED DSB GLAZING IN MOLDED FRAMES SCREWED TOGETHER IN TOP SECTION ONLY (WITH OR WITHOUT DECORATIVE INSERTS) MEETS UNIFORM STATIC DESIGN PRESSURES SHOWN ON THIS DRAWING. FOR THE VERTICAL RAISED PANEL GLAZING SHALL HAVE A DAYLIGHT OPENING OF 11.375" X 16.25" AND A MINIMUM OF (8) #8x1" SCREWS (2X ALONG THE HORIZONTAL AND 2X ALONG THE VERTICAL) AND FOR THE HORIZONTAL RAISED PANEL GLAZING SHALL HAVE A DAYLIGHT OPENING OF 24.375" X 6.5" AND A MINIMUM OF (8) #8x1" SCREWS (3X ALONG THE HORIZONTAL AND 1X ALONG THE VERTICAL). REFER TO DETAIL E ON SH 3. GLAZING IS NOT IMPACT RESISTANT AND DOES NOT MEET THE REQUIREMENTS FOR WIND-BORNE DEBRIS REGION.

2. VINYL OR WOOD DOOR STOP-MOLDING NAILED WITH 6D COMMON NAILS ON 6" MAXIMUM SPACING MUST OVERLAP TOP AND BOTH ENDS OF PANELS MINIMUM 7/16".

3. SLIDE LOCK OR DRAWBAR OPERATOR REQUIRED.

4. SECTION SHALL BE CONSTRUCTED WITH FOAMED IN PLACE POLYURETHANE FOAM INSULATION CHEMICALLY BONDED TO A MINIMUM .070" FIBERGLASS FACER AND 27 GA STEEL BACKER.

5. THE DESIGN OF THE SUPPORTING STRUCTURAL ELEMENTS SHALL BE THE RESPONSIBILITY OF THE PROFESSIONAL OF RECORD FOR THE BUILDING OR STRUCTURE AND IN ACCORDANCE WITH CURRENT BUILDING CODES FOR THE LOADS LISTED ON THIS DRAWING.

6. DOOR JAMB TO BE MINIMUM 2x4 SOUTHERN PINE LUMBER. REFER TO JAMB CONNECTION SUPPLEMENT FOR ATTACHMENT TO SUPPORTING STRUCTURE.

7. SECTION SHALL HAVE A 5" 25 GA STEEL BACKUP PLATE ACROSS THE TOP OF EACH SECTION.

8. FOR LOW HEAD ROOM LIFT CONDITIONS, TOP BRACKET SHALL BE A 13 GA LHR 7/4 TOP BRACKET WITH A MINIMUM OF (3) 1/4-14x7/8" SELF DRILLING CRIMPITE SCREWS IN LIEU OF THE BRACKET SHOWN ON THIS DRAWING. U-BAR ON TOP SECTION SHALL BE INSTALLED ON TOP OF LHR TOP BRACKETS.

13 GA HORIZ ANGLE  
13 GA FLAG ANGLE  
16 GA MIN HORIZ TRACK  
5/16x1-5/8" LAG SCREW (MIN 3 AS SHOWN)  
1/4-20x9/16" TRACK BOLT AND 1/4-20 HEX NUT AT JB-1 JAMB BRACKET  
16 GA MIN VERT TRACK  
5/16x1-5/8" LAG SCREW AT EACH JAMB BRACKET  
15 GA STIFFENED JAMB BRACKETS SEE SCHEDULE FOR QUANTITY, LOCATION, AND TYPE  
SECURE LOCK STRIKER PLATE (ONLY REQUIRED WITH SLIDE LOCK) ATTACHED TO TRACK WITH (2) 1/4-20x9/16" TRACK BOLTS AND 1/4-20 NUTS  
SLIDE LOCK ONE END (NOT REQUIRED WITH OPERATOR - SEE NOTE 3)

NOTE: (3) SECTION SOLID DOOR SHOWN. SEE SHEET 2 FOR U-BAR LOCATIONS FOR DOORS WITH OTHER SECTION QUANTITIES AND SEE NOTE 1 THIS SHEET FOR GLAZING OPTION.

SUPERIMPOSED DESIGN PRESSURE LOADS ON SUPPORTING STRUCTURE		
MAX DOOR WIDTH	DOOR HEIGHT	UNIFORM LOAD EACH JAMB (PLF)
8'-0"	ALL	+164.0/-185.2
9'-0"	ALL	+184.5/-208.4

JAMB BRACKET SCHEDULE			
DOOR HEIGHT	NO. OF SECTIONS	NO. OF JAMB BRACKETS (EACH JAMB)	LOCATION OF CENTERLINE OF JAMB BRACKETS MEASURED FROM BOTTOM OF TRACK (ALL DIMENSIONS ± 2")
7'-0"	3	5	2" (JB), 14" (JB), 29-1/2" (JB), 44" (JB), 63-1/4" (JB)
8'-0"	4	6	2" (JB), 14" (JB), 23" (JB), 34" (JB), 46" (JB), 66-1/2" (JB)
> 8'-0"			SEE NOTE BELOW

NOTE:  
(JB-1) FOLLOWING DIMENSION DENOTES SLOTTED JAMB BRACKET ATTACHED TO TRACK WITH 1/4-20x9/16" TRACK BOLT AND NUT.  
(QI) FOLLOWING DIMENSION DENOTES QUICK INSTALL JAMB BRACKET INSTALLED IN BUTTERFLY SLOT. NO ADDITIONAL HARDWARE NEEDED TO ATTACH TO TRACK.  
ALL DOORS GREATER THAN 8' IN HEIGHT REQUIRE USE OF CONTINUOUS WALL ANGLE. SEE SUPPLEMENT TRACK CHART FOR DETAILS.

NOTE: COMPLIES WITH IBC/IRC 2018.

JOHN E. SCATES, PE  
2560 King Arthur #124-25  
Lewisville, TX 75056  
FL PE 51737 TX PE 56308/F2203  
PROFESSIONAL ENGINEER'S SEAL PROVIDED ONLY FOR VERIFICATION OF WINDLOAD CONSTRUCTION DETAILS.

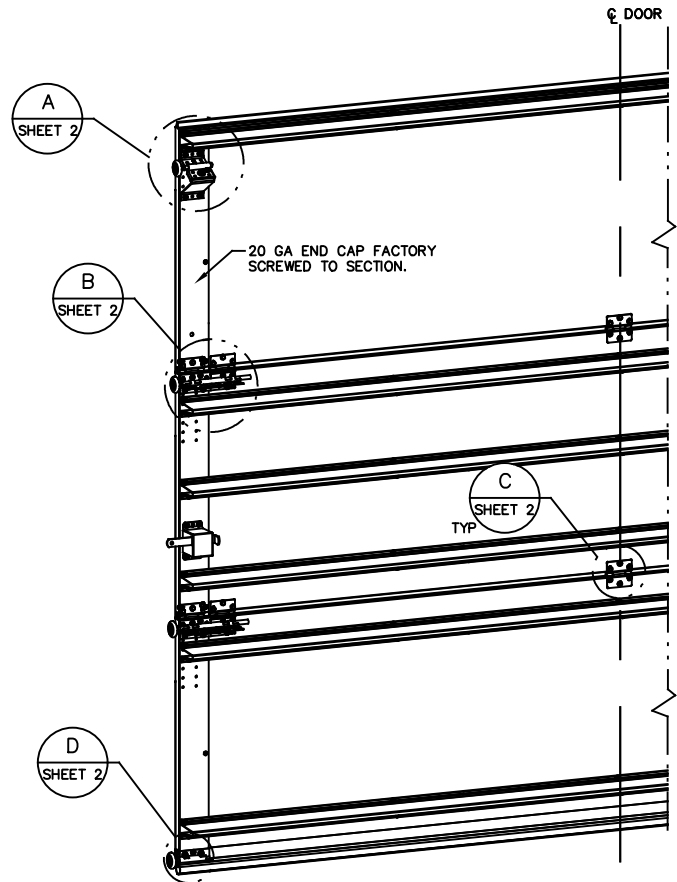
The Genuine. The Original.



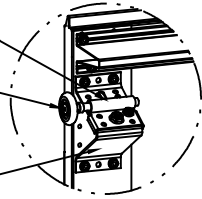
OVERHEAD DOOR CORPORATION  
2501 SOUTH STATE HIGHWAY 121  
SUITE 200 LEWISVILLE, TX 75067  
(800) 275-3920

STATIC PRESSURE RATINGS		APPROVED SIZES	SCALE: N.T.S.	SIZE: A
DESIGN (PSF):	+41.00/-46.30	MAX WIDTH: 9'-0"	DATE	NAME
TEST (PSF):	+61.50/-69.45	MAX HEIGHT: 10'-0"	DRAWN	GRT
IMPACT/CYCLIC RATED (YES/NO): NO		MAX SECTION HEIGHT: 28"	CHECKED	
MODEL 980, 7800			SHEET 1 OF 3	
			DRAWING PART NO.	REV.
			411359	C

REVISIONS  
PCR 32177 REV A  
ADDED ORACLE MODEL NUMBERS  
10/28/19  
PCR 32442 REV B  
ADDED NYLON BALL BEARING ROLLER OPTION.  
JQ 9/17/20  
D UPDATED PER PCR32744. UPDATED REV LEVELS TO ALPHABETICAL  
12/8/21 SW



13 GA ROLLER SLIDE  
ATTACHED TO BRACKET  
WITH 5/16-18 BOLT & NUT  
IN CENTER SLOT AND  
1/4-20x9/16" TRACK BOLT  
& 1/4-20 HEX NUT  
THROUGH ANY TWO  
ALIGNING HOLES

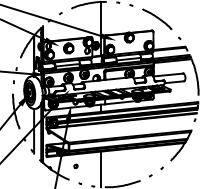


DETAIL A

2" STEEL ROLLER WITH 4"  
STEM. OPTIONAL NYLON BALL  
BEARING ROLLER AVAILABLE

(2) 15 GA HINGE LEAFS  
ATTACHED WITH (3)  
1/4-14x5/8" CRIMPTITE  
SCREWS EACH

14 GA HINGE BASE  
FACTORY ATTACHED TO  
DOOR WITH (5)  
1/4-14x1/2" SELF DRILLING  
CRIMPTITE SCREWS

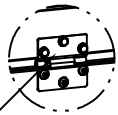


DETAIL B

2" STEEL ROLLER WITH 9"  
1144 GRADE OR EQUIVALENT  
STEM. OPTIONAL NYLON BALL  
BEARING ROLLER AVAILABLE

13 GA ROLLER SLIDE FACTORY  
RIVETED TO HINGE BASE

13 GA REINFORCING BRACKET  
ATTACHED TO HINGE BASE WITH (2)  
1/4-20x5/8" CARRIAGE BOLTS &  
1/4-20 HEX NUTS AND ATTACHED  
TO DOOR WITH (2) 1/4-14x7/8"  
SELF DRILLING CRIMPTITE SCREWS



DETAIL C

15 GA HINGE ATTACHED WITH (3)  
FIELD ATTACHED 1/4-14x5/8"  
CRIMPTITE SCREWS AND (3)  
FACTORY ATTACHED 1/4-14x1/2"  
SELF DRILLING CRIMPTITE SCREWS

12 GA BOTTOM BRACKET FACTORY  
ATTACHED WITH (2) 1/4-14x1/2"  
SELF DRILLING CRIMPTITE SCREWS  
AND (1) 1/4-14x5/8" TAMPER  
RESISTANT SCREW

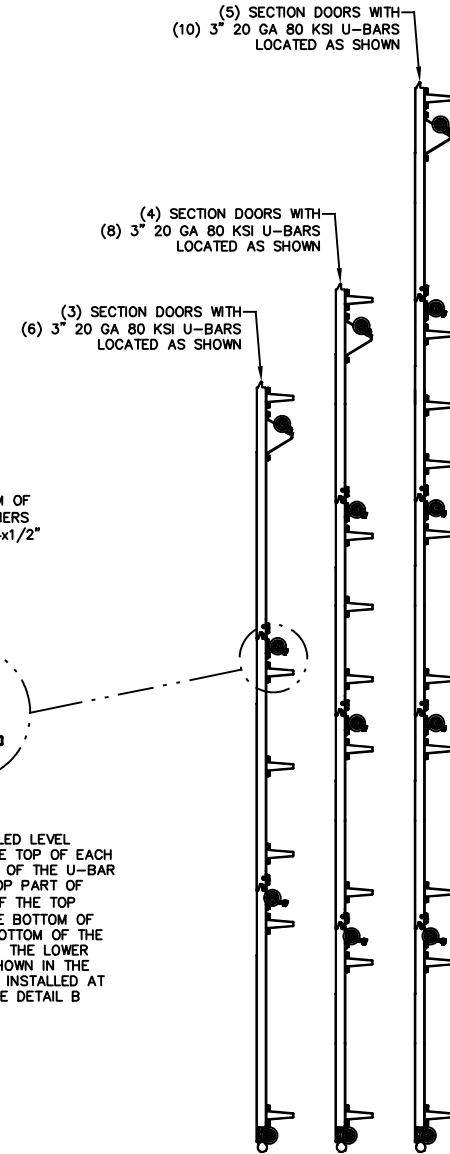


DETAIL D

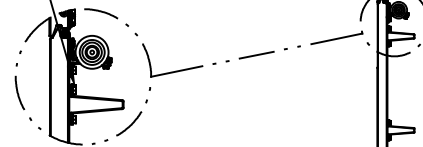
2" STEEL ROLLER WITH 4"  
STEM. OPTIONAL NYLON BALL  
BEARING ROLLER AVAILABLE

U-BAR  
ALIGNMENT  
LINES ON  
END CAPS

U-BAR LOCATIONS



ALL U-BARS SHALL BE ATTACHED WITH (1)  
FASTENER AT EACH HOLE LOCATION (MINIMUM OF  
(10) FASTENERS EACH U-BAR). ALL FASTENERS  
USED TO ATTACH U-BARS SHALL BE 1/4-14x1/2"  
SELF DRILLING CRIMPTITE SCREWS EXCEPT AT  
ENDS WHICH SHALL BE 1/4-14x7/8" SELF  
DRILLING CRIMPTITE SCREWS.



NOTE: U-BARS SHALL BE INSTALLED LEVEL  
ACROSS DOOR. THE U-BAR ON THE TOP OF EACH  
SECTION SHALL HAVE THE BOTTOM OF THE U-BAR  
ALIGNED WITH THE LINE ON THE TOP PART OF  
THE END CAP (EXCEPT THE TOP OF THE TOP  
SECTION). THE U-BAR ACROSS THE BOTTOM OF  
EACH SECTION SHALL HAVE THE BOTTOM OF THE  
U-BAR ALIGNED WITH THE LINE ON THE LOWER  
PART OF THE END CAP. U-BAR SHOWN IN THE  
MIDDLE OF THE SECTION SHALL BE INSTALLED AT  
THE MIDPOINT OF THE SECTION. SEE DETAIL B  
THIS SHEET.

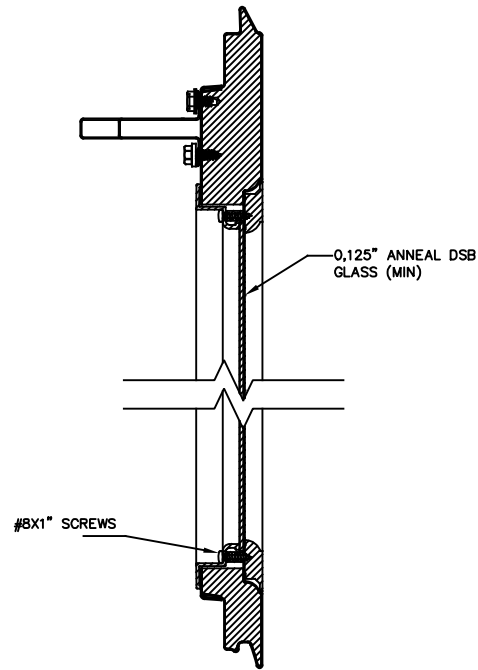
JOHN E. SCATES, PE  
2560 King Arthur #124-25  
Lewisville, TX 75056  
FL PE 51737 TX PE 56308/F2203  
PROFESSIONAL ENGINEER'S SEAL PROVIDED ONLY FOR  
VERIFICATION OF WINDLOAD CONSTRUCTION DETAILS.

The Genuine. The Original.



OVERHEAD DOOR CORPORATION  
2501 SOUTH STATE HIGHWAY 121  
SUITE 200 LEWISVILLE, TX 75067  
(800) 275-3920

STATIC PRESSURE RATINGS		APPROVED SIZES		SCALE: N.T.S.		SIZE: A	
DESIGN (PSF):	+41.00/-46.30	MAX WIDTH:	9'-0"	DATE	NAME		
TEST (PSF):	+61.50/-69.45	MAX HEIGHT:	10'-0"	DRAWN	GRT		
IMPACT/CYCLIC RATED (YES/NO): NO		MAX SECTION HEIGHT: 28"	CHECKED				
MODEL 980, 7800				SHEET 2 OF 3			
				DRAWING PART NO. 411359			REV. C



NON-IMPACT FRAME  
(STATIC RATED)

DETAIL E

JOHN E. SCATES, PE  
2560 King Arthur #124-25  
Lewisville, TX 75056  
FL PE 51737 TX PE 56308/F2203  
PROFESSIONAL ENGINEER'S SEAL PROVIDED ONLY FOR  
VERIFICATION OF WINDLOAD CONSTRUCTION DETAILS.

The Genuine. The Original.



OVERHEAD DOOR CORPORATION  
2501 SOUTH STATE HIGHWAY 121  
SUITE 200 LEWISVILLE, TX 75067  
(800) 275-3920

STATIC PRESSURE RATINGS		APPROVED SIZES		SCALE: N.T.S.		SIZE: A	
DESIGN (PSF):	+41.00/-46.30	MAX WIDTH:	9'-0"	DATE	NAME		
TEST (PSF):	+61.50/-69.45	MAX HEIGHT:	10'-0"	DRAWN	GRT		
IMPACT/CYCLIC RATED (YES/NO): NO		MAX SECTION HEIGHT: 28"		CHECKED			
MODEL 980, 7800				SHEET 3 OF 3			
				DRAWING PART NO.		REV.	
				411359		C	