

NOTES:

1. NON-IMPACT RESISTANT GLAZING OPTION - 3/32" MINIMUM SSB ANNEALED GLAZING IN MOLDED FRAMES SCREWED TOGETHER WITH A MINIMUM OF (14) #8x1" SCREWS (2X ALONG THE VERTICAL AND 5X ALONG THE HORIZONTAL) INSTALLED IN ANY OR ALL SECTIONS MEETS UNIFORM STATIC WIND PRESSURES SHOWN ON THIS DRAWING. MAXIMUM GLAZING DIMENSIONS SHALL BE 38.5" x 13" CLEAR OPENING. GLASS IS NOT IMPACT RESISTANT AND DOES NOT MEET THE REQUIREMENTS FOR WIND-BORNE DEBRIS REGIONS. SEE DETAIL E ON SHEET 2 FOR ASSEMBLY DETAILS.

ALTERNATE OPTION- 1/2" INSULATED DSB ANNEALED GLAZING IN ALUMINUM EXTERIOR FRAME/PLASTIC MOLDED INTERIOR FRAME SCREWED TOGETHER WITH A MINIMUM OF (14) #8x1" SCREWS (2X ALONG THE HORIZONTAL AND 5X ALONG THE HORIZONTAL) INSTALLED IN ANY OR ALL SECTIONS MEETS UNIFORM STATIC WIND PRESSURES SHOWN ON THIS DRAWING. MAXIMUM GLAZING DIMENSIONS SHALL BE 39" X 5-1/8" CLEAR OPENING. GLASS IS NOT IMPACT RESISTANT AND DOES NOT MEET THE REQUIREMENTS FOR WIND-BORNE DEBRIS REGIONS. SEE DETAIL F ON SHEET 2 FOR ASSEMBLY DETAILS.

2. VINYL OR WOOD DOOR STOP NAILED A MAXIMUM OF 6" O.C. MUST OVERLAP TOP AND BOTH ENDS OF PANELS MINIMUM 7/16" OR DOOR MAY OVERLAP JAMBS BY 1" ON EACH SIDE.

3. KEY LOCK, SLIDE LOCK, OR OPERATOR REQUIRED.

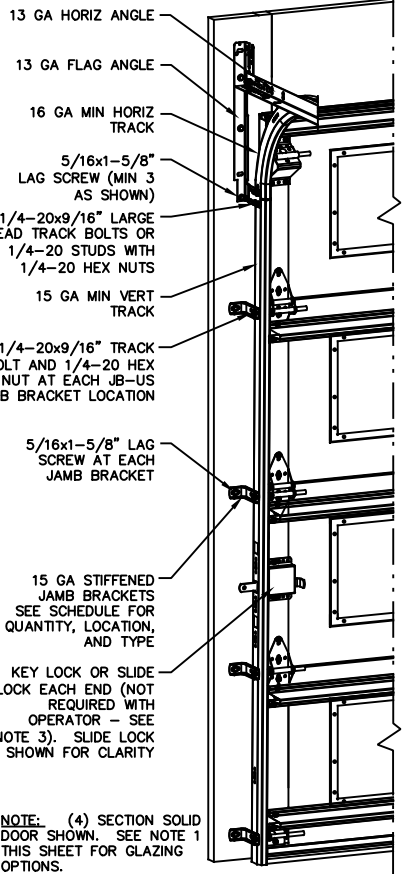
4. FACER STEEL TO HAVE A MINIMUM 27 GA THICKNESS AND BACKER STEEL TO HAVE A MINIMUM 29 GA THICKNESS.

5. THE DESIGN OF THE SUPPORTING STRUCTURAL ELEMENTS SHALL BE THE RESPONSIBILITY OF THE PROFESSIONAL OF RECORD FOR THE BUILDING OR STRUCTURE AND IN ACCORDANCE WITH CURRENT BUILDING CODES FOR THE LOADS LISTED ON THIS DRAWING.

6. DOOR JAMB TO BE MINIMUM 2x6 SOUTHERN PINE LUMBER. REFER TO JAMB CONNECTION SUPPLEMENT FOR ATTACHMENT TO SUPPORTING STRUCTURE.

7. FOR LOW HEAD ROOM LIFT CONDITIONS, TOP BRACKET SHALL BE A 13 GA LHR 7/4 TOP BRACKET WITH A MINIMUM OF (3) 1/4-14x7/8" SELF DRILLING CRIMPITTE SCREWS IN LIEU OF THE BRACKET SHOWN ON THIS DRAWING. U-BAR ON TOP SECTION SHALL BE INSTALLED ON TOP OF LHR TOP BRACKETS.

8. COMPLIES WITH THE REQUIREMENTS OF IBC/IRC 2018.

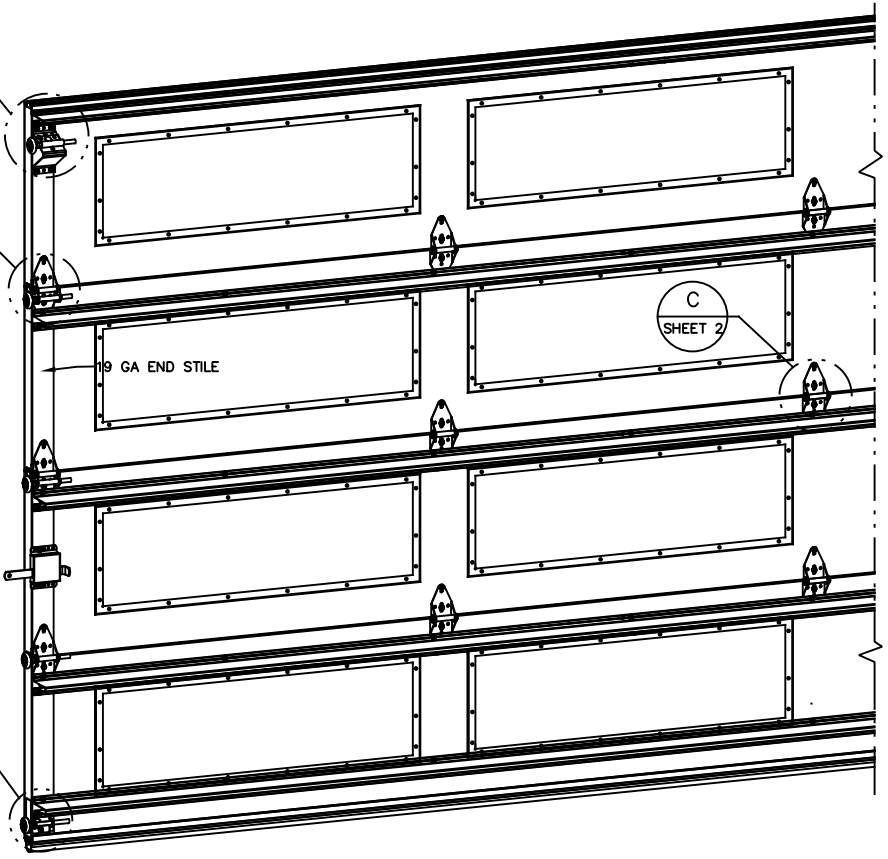


NOTE: (4) SECTION SOLID DOOR SHOWN. SEE NOTE 1 THIS SHEET FOR GLAZING OPTIONS.

A SHEET 2

B SHEET 2

D SHEET 2



REVISIONS
REV - INITIAL DRAWING
JQ 3/23/21

SUPERIMPOSED DESIGN PRESSURE LOADS ON SUPPORTING STRUCTURE

DOOR WIDTH	DOOR HEIGHT	UNIFORM LOAD EACH JAMB (PLF)
17'-2"	ALL	+109.9/-127.0
18'-2"	ALL	+116.3/-134.4

JAMB BRACKET SCHEDULE

DOOR HEIGHT	NO. OF SECTIONS	NO. OF JAMB BRACKETS (EACH JAMB)	LOCATION OF CENTERLINE OF JAMB BRACKETS MEASURED FROM BOTTOM OF TRACK (ALL DIMENSIONS ± 2")
6'-6"	4	4	2" (JB-US), 21-3/4" (JB-US), 48" (JB-US), 57-1/4" (JB-US)
7'-0"	4	4	2" (JB-US), 21-3/4" (JB-US), 42" (JB-US), 63-1/4" (JB-US)
7'-6"	4 OR 5	4	2" (JB-US), 26-3/4" (JB-US), 45" (JB-US), 74-1/2" (JB-US)
8'-0"	4 OR 5	4	2" (JB-US), 21-3/4" (JB-US), 48" (JB-US), 75-1/2" (JB-US)
> 8'-0"			SEE NOTE BELOW

NOTE: (JB-US) FOLLOWING DIMENSION DENOTES SLOTTED JAMB BRACKET ATTACHED TO TRACK WITH 1/4-20x9/16" TRACK BOLT AND NUT AS SHOWN ABOVE.

ALL DOORS GREATER THAN 8' IN HEIGHT REQUIRE USE OF CONTINUOUS WALL ANGLE. SEE SUPPLEMENT TRACK CHART FOR DETAILS.

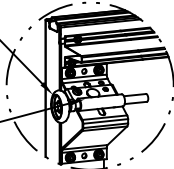
JOHN E. SCATES, PE
2560 KING ARTHUR #124-54
LEWISVILLE, TX 75056
FL PE 51737
TX PE 56308/F2203
PROFESSIONAL ENGINEER'S SEAL PROVIDED ONLY FOR VERIFICATION OF WINDLOAD CONSTRUCTION DETAILS.



A DIVISION OF OVERHEAD DOOR CORP
3395 ADDISON DRIVE
PENSACOLA, FLORIDA 32514
(850) 474-9890

STATIC PRESSURE RATINGS	APPROVED SIZES	SCALE: N.T.S.	SIZE: A
DESIGN (PSF): +12.80/-14.80	MAX WIDTH: 18'-2"	DATE: 03/09/21	NAME: JQ
TEST (PSF): +19.20/-22.20	MAX HEIGHT: 24'-0"	DRAWN: 03/31/21	DK
IMPACT/CYCLIC RATED (YES/NO): NO	MAX SECTION HEIGHT: 24"	CHECKED: 03/31/21	DK
MODELS 5745/5765/7565/7655/515/525		SHEET 1 OF 2	
WINDLOAD SPECIFICATION OPTION CODE 2614		DRAWING PART NO. 411904	REV. -

13 GA ROLLER SLIDE ATTACHED TO BRACKET WITH 5/16-18 BOLT & NUT IN CENTER SLOT AND 1/4-20x9/16" TRACK BOLT & 1/4-20 HEX NUT THROUGH ANY TWO ALIGNING HOLES

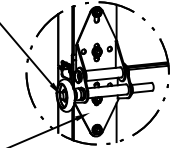


DETAIL A

13 GA COMMERCIAL 'A' FRAME TOP BRACKET ATTACHED WITH (4) 1/4-14x7/8" SELF DRILLING CRIMPTITE SCREWS

2" STEEL ROLLER WITH 5-1/4" STEM. OPTIONAL- 11 BALL BEARING NYLON ROLLER.

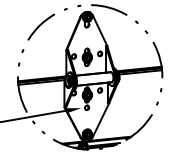
SINGLE END HINGE
#1 HINGE 14GA
#2 HINGE 13GA
#3 HINGE 13GA



DETAIL B

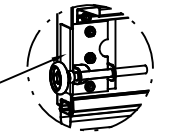
14 GA WIDE BODY END HINGE ATTACHED WITH (4) 1/4-14x7/8" SELF DRILLING CRIMPTITE SCREWS

14 GA WIDE BODY INTERMEDIATE HINGE ATTACHED WITH (4) 1/4-14x7/8" SELF DRILLING CRIMPTITE SCREWS



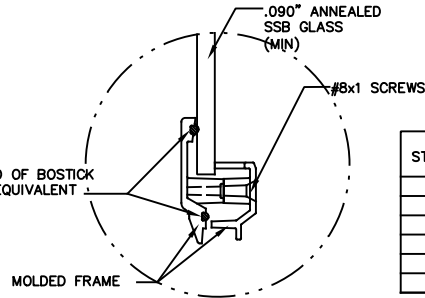
DETAIL C

14 GA BOTTOM BRACKET ATTACHED WITH (2) 1/4-14x7/8" SELF DRILLING CRIMPTITE SCREWS AND (1) 1/4-14x5/8" SELF DRILLING TAMPER RESISTANT SCREW



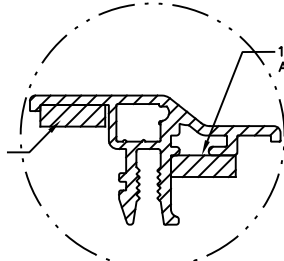
DETAIL D

1/8" BEAD OF BOSTICK 1100 OR EQUIVALENT



PLASTIC FRAME (STATIC RATED) DETAIL E

1/8" FOAM TAPE APPLIED HERE



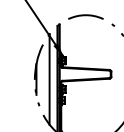
ALUMINUM FRAME (STATIC RATED ALTERNATE FRAME OPTION) DETAIL F

TOP STRUT SHALL BE 2" 20GA 80KSI U-BAR.

(4) SECTION DOORS WITH
(1) 2" 20 GA 80 KSI U-BARS
(4) 3" 18 GA 80 KSI U-BARS
LOCATED AS SHOWN



ALL U-BARS SHALL BE ATTACHED WITH (2) 1/4-14x7/8" SELF DRILLING CRIMPTITE SCREWS AT EACH HINGE LOCATION AND BETWEEN ALL END HINGES AND INTERMEDIATE HINGES. A MINIMUM OF (22) FASTENERS ARE TO BE USED.



STATIC FRAME SIZE	DAYLIGHT OPENING (DLO)	SCREW QTY
18.74 X 13.76	15 X 11	10
18.25 X 15.25	15.75 X 12.75	6
39.88 X 12.69	35.8 X 8.6	14
40.50 X 15.25	37.8 X 12.75	14
40.75 X 7	37.75 X 4	14
43.96 X 15.09	40.13 X 11.25	22

(10) SECTION DOORS WITH
(1) 2" 20 GA 80 KSI U-BARS
(10) 3" 18 GA 80 KSI U-BARS
LOCATED AS SHOWN

(9) SECTION DOORS WITH
(1) 2" 20 GA 80 KSI U-BARS
(9) 3" 18 GA 80 KSI U-BARS
LOCATED AS SHOWN

(8) SECTION DOORS WITH
(1) 2" 20 GA 80 KSI U-BARS
(8) 3" 18 GA 80 KSI U-BARS
LOCATED AS SHOWN

(7) SECTION DOORS WITH
(1) 2" 20 GA 80 KSI U-BARS
(7) 3" 18 GA 80 KSI U-BARS
LOCATED AS SHOWN

(6) SECTION DOORS WITH
(1) 2" 20 GA 80 KSI U-BARS
(6) 3" 18 GA 80 KSI U-BARS
LOCATED AS SHOWN

(5) SECTION DOORS WITH
(1) 2" 20 GA 80 KSI U-BARS
(5) 3" 18 GA 80 KSI U-BARS
LOCATED AS SHOWN

JOHN E. SCATES, PE
2560 KING ARTHUR #124-54
LEWISVILLE, TX 75056
FL PE 51737
TX PE 56308/F2203
PROFESSIONAL ENGINEER'S SEAL PROVIDED ONLY FOR VERIFICATION OF WINDLOAD CONSTRUCTION DETAILS.

The Genuine. The Original.



A DIVISION OF OVERHEAD DOOR CORP
3395 ADDISON DRIVE
PENSACOLA, FLORIDA 32514
(850) 474-9890

STATIC PRESSURE RATINGS		APPROVED SIZES		SCALE: N.T.S.		SIZE: A	
DESIGN (PSF):	+12.80/-14.80	MAX WIDTH:	18'-2"	DATE	NAME		
TEST (PSF):	+19.20/-22.20	MAX HEIGHT:	24'-0"	DRAWN	03/09/21	JQ	
IMPACT/CYCLIC RATED (YES/NO): NO		MAX SECTION HEIGHT:	24"	CHECKED	03/31/21	DK	
MODELS 5745/5765/7565/7655/515/525				SHEET 2 OF 2			
WINDLOAD SPECIFICATION OPTION CODE 2614				DRAWING PART NO.		REV.	
				411904		-	