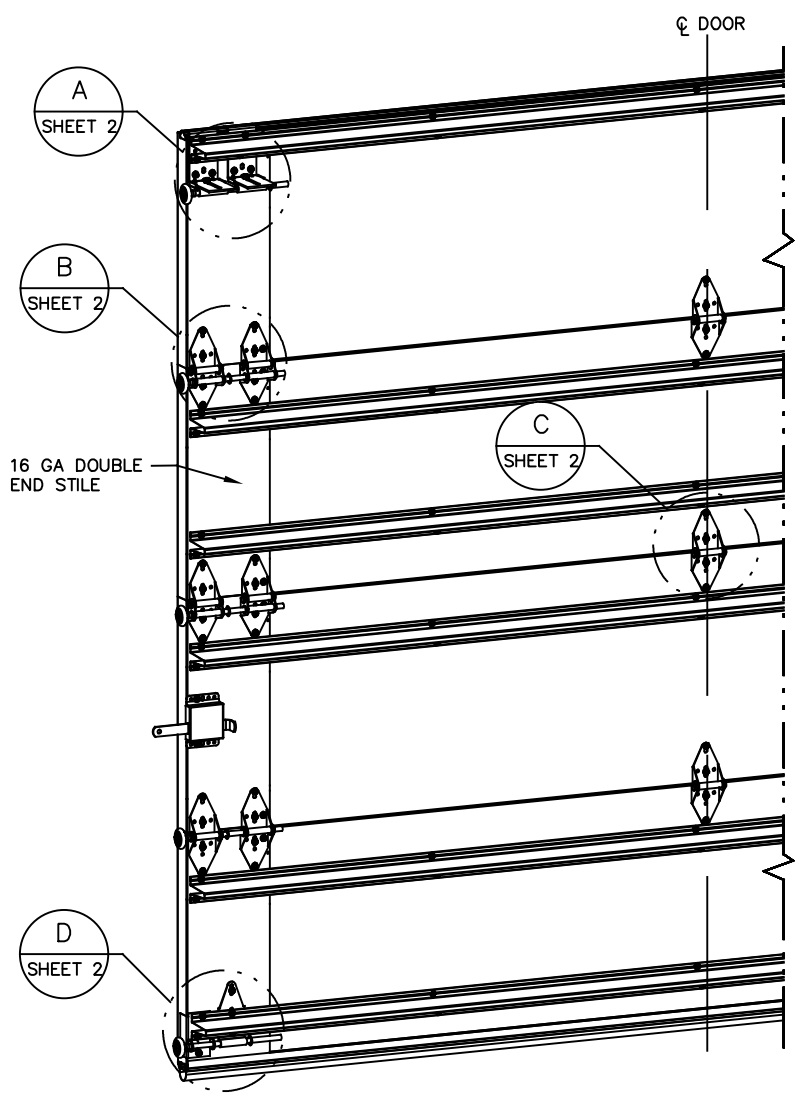
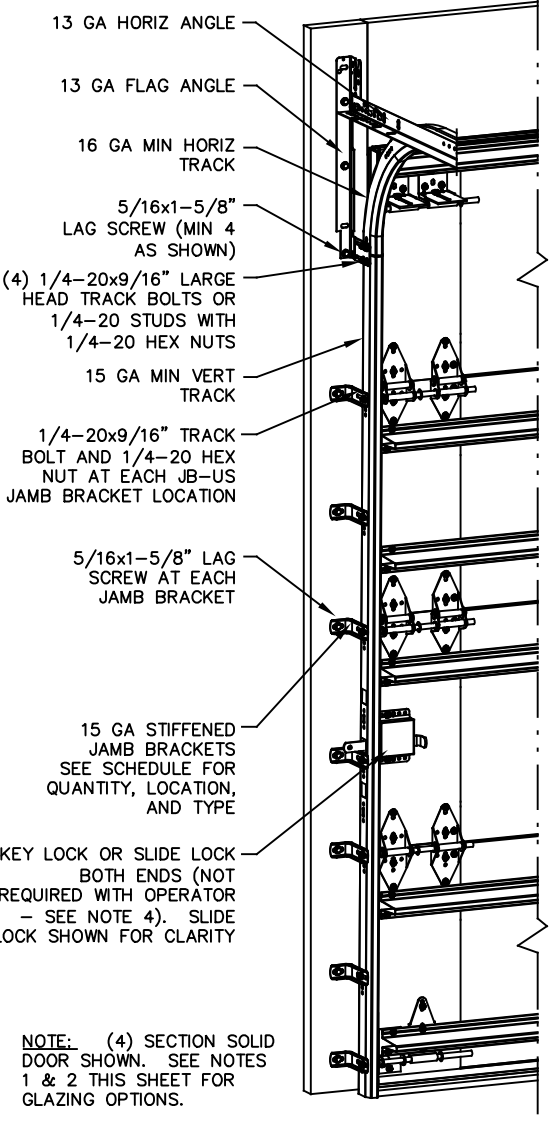


NOTES:
 1. IMPACT RESISTANT GLAZING OPTION – IMPACT RESISTANT GLAZING SYSTEM MAY BE INSTALLED IN TOP OR INTERMEDIATE SECTION (WITH OR WITHOUT DECORATIVE INSERTS). GLAZING SHALL BE 1/4" POLYCARBONATE. MAXIMUM GLAZING DIMENSIONS SHALL BE 14" x 46" CUTOUT, FASTENED WITH A MINIMUM #8 X 1" SMS: 3X ALONG THE HORIZONTAL AND 3X ALONG THE VERTICAL. SEE DETAIL E ON SHEET 2 FOR ASSEMBLY DETAILS.
 2. NON-IMPACT REISTANT GLAZING OPTION – .090" MINIMUM SSB GLAZING IN MOLDED FRAMES SCREWED TOGETHER WITH A MINIMUM OF (10) #8x1" SCREWS (3X ALONG THE HORIZONTAL AND 2X ALONG THE VERTICAL) INSTALLED IN TOP OR INTERMEDIATE SECTION (WITH OR WITHOUT DECORATIVE INSERTS) MEETS UNIFORM STATIC WIND PRESSURES SHOWN ON THIS DRAWING. MAXIMUM GLAZING DIMENSIONS SHALL BE 15" x 46" CUTOUT. GLAZING IS NOT IMPACT RESISTANT AND DOES NOT MEET THE REQUIREMENTS FOR WIND-BORNE DEBRIS REGIONS.
 3. VINYL OR WOOD DOOR STOP NAILED A MAXIMUM OF 6" O.C. MUST OVERLAP TOP AND BOTH ENDS OF PANELS MINIMUM 7/16" TO MEET NEGATIVE PRESSURES.
 4. KEY LOCK, SLIDE LOCK, OR OPERATOR REQUIRED.
 5. LOUVER OPTION – .040" MINIMUM LOUVERS IN MOLDED FRAMES SCREWED TOGETHER WITH A MINIMUM OF (10) #8x1" SCREWS (3X ALONG THE HORIZONTAL AND 2X ALONG THE VERTICAL) INSTALLED IN THE BOTTOM SECTION. MAXIMUM LOUVER DIMENSIONS SHALL BE 15" x 19" CUTOUT. LOUVERS ARE NOT IMPACT RESISTANT AND DO NOT MEET THE REQUIREMENTS FOR WIND-BORNE DEBRIS REGIONS.
 6. FACER STEEL TO HAVE A MINIMUM 27 GA THICKNESS AND BACKER STEEL TO HAVE A MINIMUM 29 GA THICKNESS.
 7. A 4-1/2" x 6" x 22 GA BACKER PLATE IS TO BE LOCATED AT EVERY INTERMEDIATE AND OUTER END HINGE LOCATION.
 8. THE DESIGN OF THE SUPPORTING STRUCTURAL ELEMENTS SHALL BE THE RESPONSIBILITY OF THE PROFESSIONAL OF RECORD FOR THE BUILDING OR STRUCTURE AND IN ACCORDANCE WITH CURRENT BUILDING CODES FOR THE LOADS LISTED ON THIS DRAWING.
 9. DOOR JAMB TO BE MINIMUM 2x4 STRUCTURAL GRADE LUMBER. REFER TO JAMB CONNECTION SUPPLEMENT FOR ATTACHMENT TO SUPPORTING STRUCTURE.
 10. FOR LOW HEAD ROOM LIFT CONDITIONS, TOP BRACKET SHALL BE A 13 GA LHR 7/4 TOP BRACKET WITHOUT PUSHNUTS AND WITH A MINIMUM OF (3) 1/4-14x7/8" SELF DRILLING CRIMPTITE SCREWS IN LIEU OF THE BRACKET SHOWN ON THIS DRAWING. U-BAR ON TOP SECTION SHALL BE INSTALLED ON TOP OF LHR TOP BRACKETS.



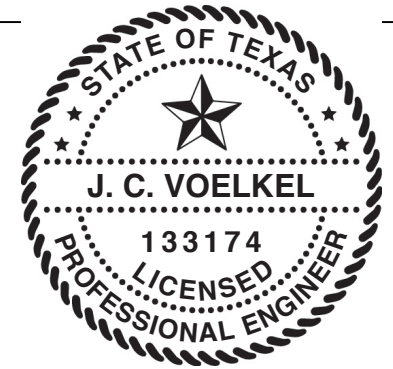
| REVISIONS | | | | |
|-----------|-----|------------------------|------------|----------|
| ER | REV | DESCRIPTION | DATE | APPROVAL |
| | C | REV TITLE BLOCK | 10/2/2017 | ESC |
| 32177 | D | ADD MODEL# 7655 | 11/15/2019 | TLC |
| 32442 | E | ADDED NYLON ROLLER OPT | 8/2/2020 | TLC |
| 32442 | F | ADDED IRC/IBC NOTE | 8/2/2020 | TLC |

| STATIC PRESSURE RATINGS | APPROVED SIZES |
|-----------------------------------|-------------------------|
| DESIGN PRESSURE(PSF): +46.0/-52.0 | MAX WIDTH: 9'-2" |
| IMPACT/CYCLIC RATED: YES | MAX HEIGHT: 24' |
| | MAX SECTION HEIGHT: 24' |

| SUPERIMPOSED DESIGN PRESSURE LOADS ON SUPPORTING STRUCTURE | | |
|--|-------------|------------------------------|
| DOOR WIDTH | DOOR HEIGHT | UNIFORM LOAD EACH JAMB (PLF) |
| 8'-2" | ALL | +187.8/-212.3 |
| 9'-2" | ALL | +210.8/-238.3 |

| JAMB BRACKET SCHEDULE | | | |
|-----------------------|-----------------|----------------------------------|---|
| DOOR HEIGHT | NO. OF SECTIONS | NO. OF JAMB BRACKETS (EACH JAMB) | LOCATION OF CENTERLINE OF JAMB BRACKETS MEASURED FROM BOTTOM OF TRACK (ALL DIMENSIONS ± 2") |
| 6'-6" | 4 | 7 | 2" (JB-US), 10" (JB-US), 21-3/4" (JB-US), 29-3/4" (JB-US), 39" (JB-US), 48" (JB-US), 57-1/4" (JB-US) |
| 7'-0" | 4 | 7 | 2" (JB-US), 10" (JB-US), 21-3/4" (JB-US), 29-3/4" (JB-US), 42" (JB-US), 52-1/2" (JB-US), 63-1/4" (JB-US) |
| 7'-6" | 4 OR 5 | 8 | 2" (JB-US), 10" (JB-US), 18-3/4" (JB-US), 26-3/4" (JB-US), 36" (JB-US), 45" (JB-US), 54-1/4" (JB-US), 74-1/2" (JB-US) |
| 8'-0" | 4 OR 5 | 8 | 2" (JB-US), 10" (JB-US), 21-3/4" (JB-US), 29-3/4" (JB-US), 39" (JB-US), 48" (JB-US), 57-1/2" (JB-US), 75-1/2" (JB-US) |
| > 8'-0" | | | SEE NOTE BELOW |

NOTE:
 (JB-US) FOLLOWING DIMENSION DENOTES SLOTTED JAMB BRACKET ATTACHED TO TRACK WITH 1/4-20x9/16" TRACK BOLT AND NUT AS SHOWN ABOVE.
 ALL DOORS GREATER THAN 8' IN HEIGHT REQUIRE USE OF CONTINUOUS WALL ANGLE. SEE SUPPLEMENT TRACK CHART FOR DETAILS.



J. CHRISTIAN VOELKEL, PE
 312 N. NEW WARRINGTON RD, UNIT 1A
 PENSACOLA, FL
 FL PE 82229
 TX PE 133174

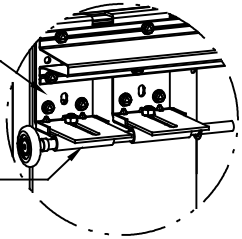
PROFESSIONAL ENGINEER'S SEAL PROVIDED ONLY FOR VERIFICATION OF WIND LOAD CONSTRUCTION DETAILS.

THE DOORS ARE DESIGNED AND MANUFACTURED TO COMPLY WITH THE 2018 IRC AND THE 2018 IBC.

| THE DRAWINGS AND ALL OTHER INFORMATION CONTAINED HEREIN ARE THE CONFIDENTIAL AND PROPRIETARY PROPERTY OF OVERHEAD DOOR CORPORATION AND ITS AFFILIATED COMPANIES. THIS DRAWING AND INFORMATION, IN WHOLE OR IN PART, MAY NOT BE COPIED IN ANY MANNER OR DISCLOSED TO ANYONE WITHOUT THE PRIOR WRITTEN CONSENT OF OVERHEAD DOOR CORPORATION. NO DISCLOSURE OF ANY OF THIS DRAWING OR INFORMATION IS INTENDED TO OPERATE AS A LICENSE OR AUTHORIZATION TO USE IT FOR ANY PURPOSE WITHOUT THE SPECIFIC WRITTEN CONSENT OF OVERHEAD DOOR CORPORATION. | | | | | | | | | |
|--|---------|---------------------------------------|----------------|-----------------|----------------------------|--|--------------|----------|----------------------------|
| REF DWG | USED ON | TOLERANCES UNLESS OTHERWISE SPECIFIED | | FINISH | THE GENUINE. THE ORIGINAL. | | NAME | DATE | DRAWING TITLE |
| | | HOLE DIAMETER | WHOLE NUMBERS: | N/A | OVERHEAD DOOR | | G. TAYLOR | 10/25/13 | SERIES 5745/5765/7565 |
| | | UNDER .251 +.004/-0.003 | .X ± .1 | UNIT OF MEASURE | LEWISVILLE, TEXAS | | CHECKED BY: | | 7655/515/525 |
| | | .251 TO .500 +.006/-0.003 | .XX ± .03 | EACH | MATERIAL: | | APPROVED BY: | | D-411319 |
| | | OVER .500 +.008/-0.003 | .XXX ± .010 | | NONE | | | | DRAWING NUMBER |
| | | FRACTIONS ± 1/16 | ANGLES: ± .5° | | | | | | D-411319 |
| | | | | | | | | | SCALE: N.T.S. SHEET 1 OF 2 |

| REVISIONS | | | | |
|-----------|------------------------|------------|----------|--|
| REV | DESCRIPTION | DATE | APPROVAL | |
| C | REV TITLE BLOCK | 10/2/2017 | ESC | |
| D | ADD MODEL# 7655 | 11/15/2019 | TLC | |
| E | ADDED NYLON ROLLER OPT | 8/2/2020 | TLC | |
| F | ADDED IRC/IBC NOTE | 8/2/2020 | TLC | |

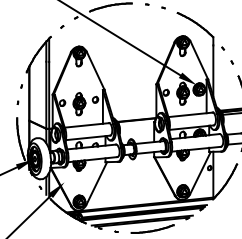
(2) 12 GA COMMERCIAL 'L' FRAME TOP BRACKETS ATTACHED WITH (4) 1/4-20x7/8" SELF DRILLING SCREWS (2 THROUGH STRUT AND TOP BRACKET)



DETAIL A

13 GA ROLLER SLIDE ATTACHED TO BRACKET WITH 5/16-18 BOLT & NUT IN THE CENTER SLOT

ADD (2) 1/4-14x7/8" SELF DRILLING CRIMPITE SCREWS (INSIDE OF EACH INSIDE END HINGE)

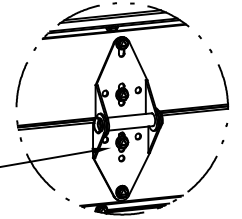


DETAIL B

2" STEEL ROLLER WITH 9" GRADE 1144 OR EQUIVALENT STEM AND 7/16" PUSH NUT AT EACH ROLLER LOCATION LOCATED BETWEEN THE BRACKET OR HINGE (EXCEPT PUCHNUT LOCATED ON THE TOP AND BOTTOM ROLLER IS LOACTED OUTSIDE OF BOTH BRACKETS). 1/4" MAX BETWEEN PUSH NUT AND OUTER HINGE. OPTIONAL NYLON, 10/11-BALL BEARING ROLLER AVAILABLE

NOTE: IF 3" TRACK IS USED, THEN END HINGERS TO BE 11 GA MODIFIED HINGES. ROLLERS TO BE 3" STEEL ROLLERS WITH 9/16" DIA. X 9" LONG SHAFT AT ALL LOCATIONS EXCEPT TOP AND BOTTOM. TOP AND BOTTOM ROLLERS TO BE 3" STEEL ROLLERS WITH 7/16" DIA. X 9" LONG SHAFT. PUSH NUTS ONLY USED AT TOP AND BOTTOM ROLLER LOCATIONS.

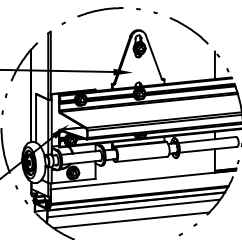
(2) 14 GA WIDE BODY END HINGES EACH ATTACHED WITH (4) 1/4-14x7/8" SELF DRILLING CRIMPITE SCREWS



DETAIL C

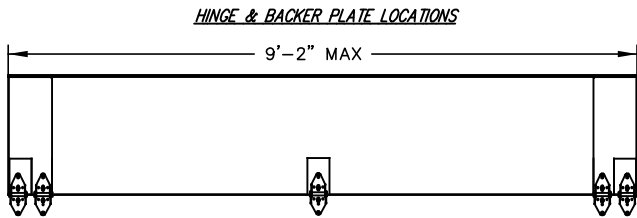
14 GA WIDE BODY INTERMEDIATE HINGE ATTACHED WITH (4) 1/4-14x7/8" SELF DRILLING CRIMPITE SCREWS

12 GA EXTENSION BRACKET ATTACHED WITH (3) 1/4-14x7/8" SELF DRILLING CRIMPITE SCREWS (2 THROUGH STRUT AND BRACKET)



DETAIL D

14 GA BOTTOM BRACKET ATTACHED WITH (2) 1/4-14x7/8" SELF DRILLING CRIMPITE SCREWS THROUGH STRUT AND BOTTOM BRACKET AND (1) 1/4-14x5/8" SELF DRILLING TAMPER RESISTANT SCREW



HINGE & BACKER PLATE LOCATIONS

ALL U-BARS SHALL BE ATTACHED WITH (2) 1/4-14x7/8" SELF DRILLING CRIMPITE SCREWS AT EACH HINGE LOCATION AND BETWEEN ALL END HINGES AND INTERMEDIATE HINGES. A MINIMUM OF (10) FASTENERS ARE TO BE USED.

(4) SECTION DOORS WITH (6) 3" 20 GA 80 KSI U-BARS LOCATED AS SHOWN

(5) SECTION DOORS WITH (8) 3" 20 GA 80 KSI U-BARS LOCATED AS SHOWN

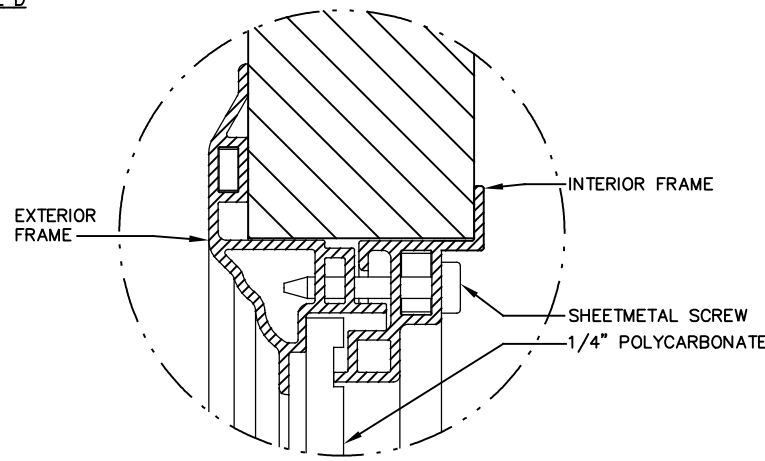
(6) SECTION DOORS WITH (9) 3" 20 GA 80 KSI U-BARS LOCATED AS SHOWN

(7) SECTION DOORS WITH (11) 3" 20 GA 80 KSI U-BARS LOCATED AS SHOWN

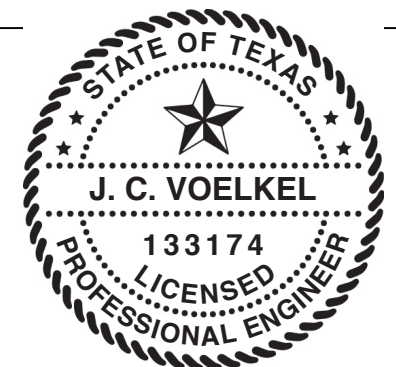
(8) SECTION DOORS WITH (12) 3" 20 GA 80 KSI U-BARS LOCATED AS SHOWN

(9) SECTION DOORS WITH (14) 3" 20 GA 80 KSI U-BARS LOCATED AS SHOWN

(10) SECTION DOORS WITH (15) 3" 20 GA 80 KSI U-BARS LOCATED AS SHOWN



DETAIL E



J. CHRISTIAN VOELKEL, PE
312 N. NEW WARRINGTON RD, UNIT 1A
PENSACOLA, FL
FL PE 82229
TX PE 133174

PROFESSIONAL ENGINEER'S SEAL PROVIDED ONLY FOR VERIFICATION OF WIND LOAD CONSTRUCTION DETAILS.

THE DOORS ARE DESIGNED AND MANUFACTURED TO COMPLY WITH THE 2018 IRC AND THE 2018 IBC.

THE DRAWINGS AND ALL OTHER INFORMATION CONTAINED HEREIN ARE THE CONFIDENTIAL AND PROPRIETARY PROPERTY OF OVERHEAD DOOR CORPORATION AND ITS AFFILIATED COMPANIES. THIS DRAWING AND INFORMATION, IN WHOLE OR IN PART, MAY NOT BE COPIED IN ANY MANNER OR DISCLOSED TO ANYONE WITHOUT THE PRIOR WRITTEN CONSENT OF OVERHEAD DOOR CORPORATION. NO DISCLOSURE OF ANY OF THIS DRAWING OR INFORMATION IS INTENDED TO OPERATE AS A LICENSE OR AUTHORIZATION TO USE IT FOR ANY PURPOSE WITHOUT THE SPECIFIC WRITTEN CONSENT OF OVERHEAD DOOR CORPORATION.

| TOLERANCES UNLESS OTHERWISE SPECIFIED | | FINISH | | MATERIAL | |
|---------------------------------------|----------------------|--------|-----------------|----------|--|
| HOLE DIAMETER | WHOLE NUMBERS: ± .25 | N/A | UNIT OF MEASURE | NONE | |
| UNDER .251 +.004/-0.003 | .X ± .1 | EACH | EACH | | |
| .251 TO .500 +.006/-0.003 | .XX ± .03 | | | | |
| OVER .500 +.008/-0.003 | .XXX ± .010 | | | | |
| FRACTIONS | ANGLES: ± .5° | | | | |
| ± 1/16 | | | | | |

| | | | | | | |
|---------|---------|---|--|-----------------|----------------|---|
| REF DWG | USED ON | ASME Y14.100 AND Y14.5 APPLY, UNLESS OTHERWISE SPECIFIED DIMENSIONS ARE IN U.S. CUSTOMARY UNITS | THE GENUINE. THE ORIGINAL. OVERHEAD DOOR LEWISVILLE, TEXAS | NAME: G. TAYLOR | DATE: 10/25/13 | DRAWING TITLE: SERIES 5745/5765/7565 7655/515/525 |
| | | | | CHECKED BY: | | DRAWING NUMBER: D-411319 |
| | | | | APPROVED BY: | | SCALE: N.T.S. SHEET 2 OF 2 |