

Window Options:
 1/8" DSB
 1/4" Tempered Glass
 7/16" Insulated Glass
 7/16" Tempered Insulated Glass

Door Height	Section Quantity	Strut Quantity	Per Bkt Side
6'-0" to 8'-0"	4	10	6
8'-3" to 10'-0"	5	12	9
10'-3" to 12'-0"	6	14	11
12'-3" to 14'-0"	7	16	13
14'-3" to 16'-0"	8	18	14
16'-3" to 18'-0"	9	20	15
18'-3" to 20'-0"	10	22	17
20'-3" to 22'-0"	11	24	19
22'-3" to 24'-0"	12	26	22

Track bracket quantities shown are for use with grade 2 or better southern pine jambs. When using softer wood species like spruce-pine-fir (SPF) use the quantity of track brackets specified in the chart plus three track brackets per side or seven track brackets per side for doors taller than 14 feet.

This door has been evaluated per ASCE 7-02 & 7-05 as referenced by 2006 IBC 1609 & 2006 IRC 301, in accordance with ANSI/DASMA 108-02, 108-05, & ASTM E330-02. Design Pressures (DP) typically meet requirements for the following exposure B wind speeds. These wind speeds are for 8' high doors on buildings with a flat roof height less than 30 feet.

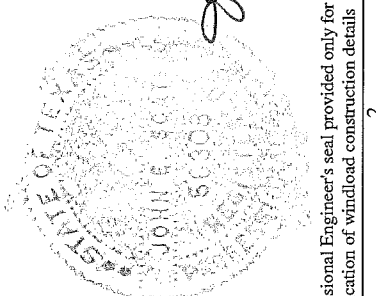
Door Width	With windows		No windows		Backer plates
	Design Pressure	Exp B	Design Pressure	Exp B	
22'-02"	26.2 / - 29.6 (psf)	139 (mph)	26.2 / - 29.6 (psf)	139 (mph)	9
21'-02"	28.7 / - 32.4 (psf)	145 (mph)	28.7 / - 32.4 (psf)	145 (mph)	9
20'-02"	31.6 / - 35.7 (psf)	153 (mph)	31.6 / - 35.7 (psf)	153 (mph)	9
19'-02"	35.0 / - 39.5 (psf)	160 (mph)	35.0 / - 39.5 (psf)	160 (mph)	9
18'-02"	39.0 / - 44.0 (psf)	169 (mph)	39.0 / - 44.0 (psf)	169 (mph)	9
17'-02"	39.0 / - 44.0 (psf)	168 (mph)	41.3 / - 46.6 (psf)	173 (mph)	7
16'-02"	39.0 / - 44.0 (psf)	168 (mph)	43.8 / - 49.4 (psf)	178 (mph)	7
15'-02"	39.0 / - 44.0 (psf)	168 (mph)	46.7 / - 52.7 (psf)	183 (mph)	7
14'-02"	39.0 / - 44.0 (psf)	167 (mph)	50.0 / - 56.4 (psf)	189 (mph)	5

Supporting structural elements to be designed by registered professional engineer for specified wind loads. If door is not electrically operated, a lock must be installed.
 Door height: 24'-0" max
 Section height: 24" max

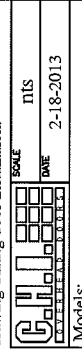
Backer plate quantity is minimum per section.

Professional Engineer's seal provided only for verification of windload construction details

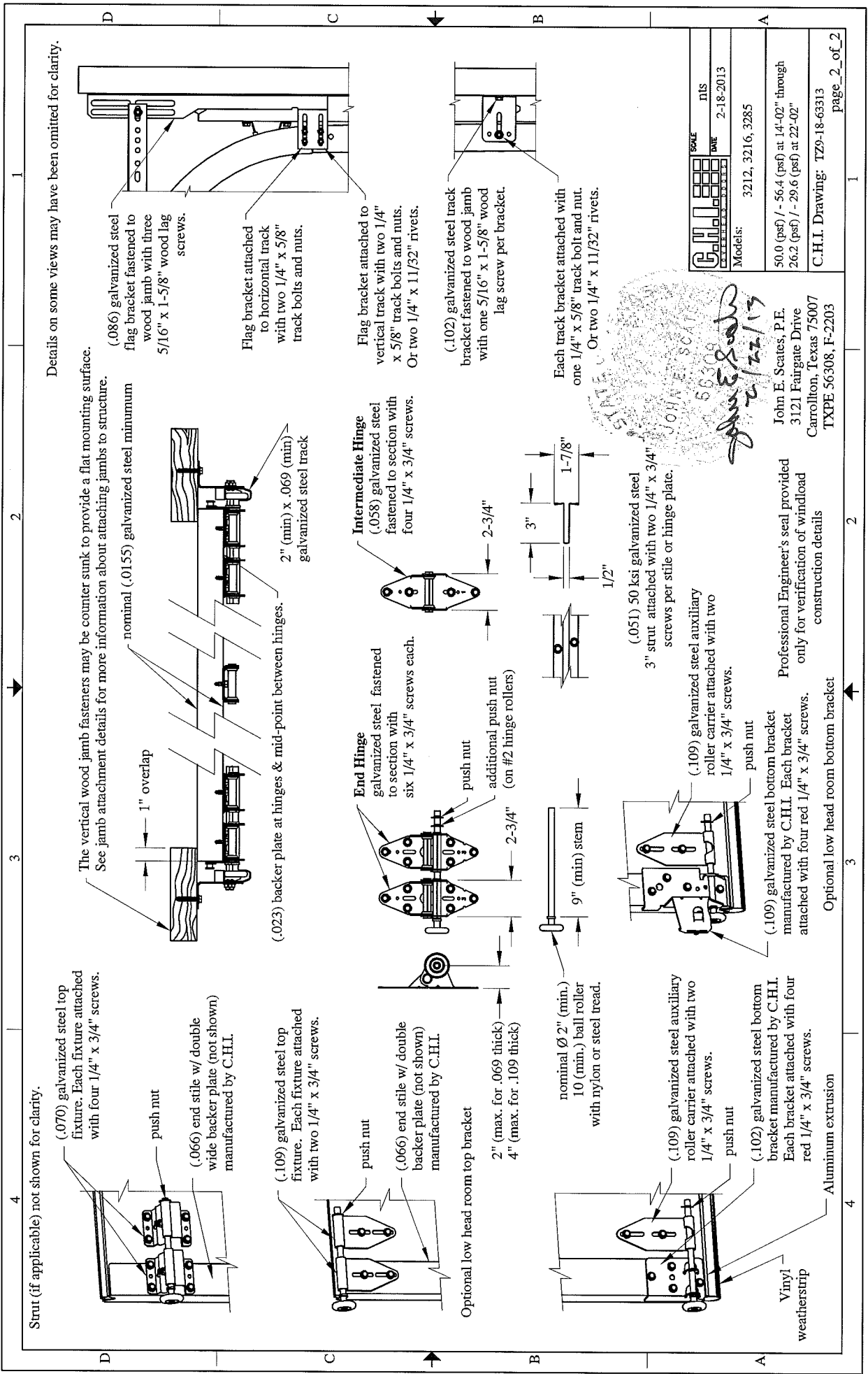
John E. Scates, P.E.
 3121 Fairgate Drive
 Carrollton, Texas 75007
 TXPE 56308, F-2203



Supplemental Instructions contain details for doors up to 24'-0" high. These are required in addition to this drawing for installation. Always use supplemental instructions in addition to this drawing during door installation.



C.H.I. Drawing: TZ9-18-63313
 page 1 of 2



Details on some views may have been omitted for clarity.

	TITLE THIS
	DATE 2-18-2013
Models: 3212, 3216, 3285	SCALE AS SHOWN
50.0 (psf) / - 56.4 (psf) at 14'-02" through 26.2 (psf) / - 29.6 (psf) at 22'-02"	Models: 3212, 3216, 3285
C.H.I. Drawing: ITZ9-18-63313 page_2_of_2	Models: 3212, 3216, 3285

Professional Engineer's seal provided only for verification of windload construction details.

John E. Seates, P.E.
 3121 Fairgate Drive
 Carrollton, Texas 75007
 TXPE 56308, F-2203

Professional Engineer's seal provided only for verification of windload construction details.