

Window Options:  
 max daylight opening 39-3/8" x 12-1/2"  
 1/8" DSB  
 1/8" Polycarbonate  
 1/8" Glue Chip Glass  
 1/4" Tempered Glass  
 7/16" Insulated Glass  
 7/16" Tempered Insulated Glass  
 1/2" Insulated Glue Chip Glass  
 max daylight opening 29-1/2" x 13-1/8"  
 1/4" Lexan with Aluminum Frame

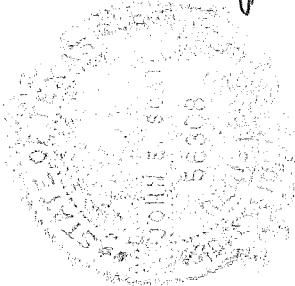
Door Height	Section Quantity	Strut Quantity	Trk Bklt Per Side
6'-0" to 8'-0"	4	8	6
8'-3" to 10'-0"	5	10	9
10'-3" to 12'-0"	6	12	11
12'-3" to 14'-0"	7	14	13
14'-3" to 16'-0"	8	16	14
16'-3" to 18'-0"	9	18	15
18'-3" to 20'-0"	10	20	17
20'-3" to 22'-0"	11	22	19
22'-3" to 24'-0"	12	24	22

Track bracket quantities shown are for use with grade 2 or better southern pine jambs. When using softer wood species like spruce-pine-fir (SPF) use the quantity of track brackets specified in the chart plus four track brackets per side.

Supplemental Instructions contain details for doors up to 24'-0" high. These are required in addition to this drawing for installation. Always use supplemental instructions in addition to this drawing during door installation.

<b>SCALE</b>	Nts
<b>DATE</b>	2-18-2013
<b>Models:</b>	3212, 3216, 3285
	105 (psf) / - 121 (psf) at 06'-02" through
	51.7 (psf) / - 59.7 (psf) at 11'-02"

C.H.I. Drawing: TZ14-10-63313 page 1\_of\_2



*John E. Scates*  
 2/21/13

John E. Scates, P.E.  
 3121 Fairgate Drive  
 Carrollton, Texas 75007  
 TXPE 56308, F-2203

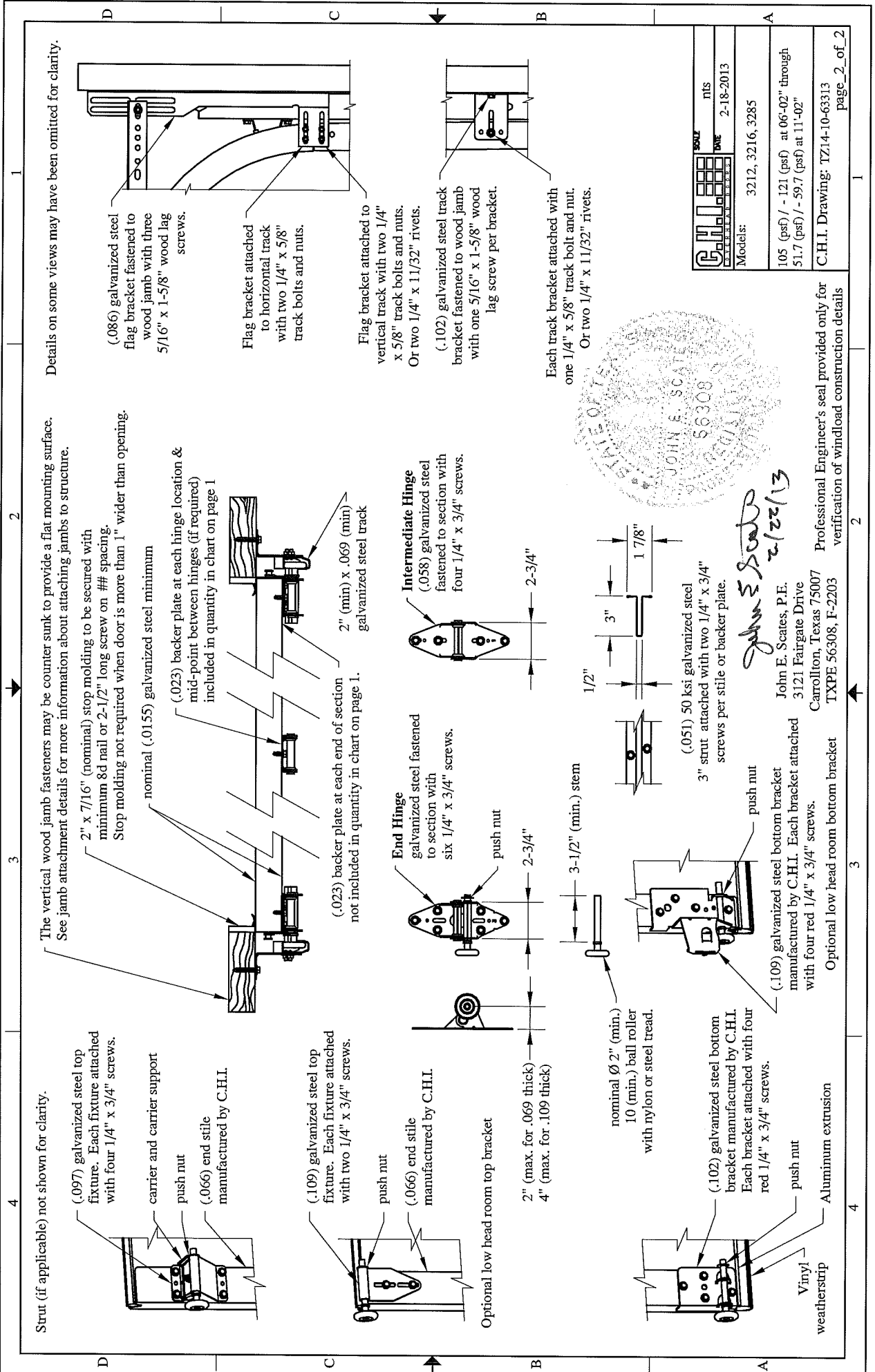
This door has been evaluated per ASCE 7-02 & 7-05 as referenced by 2006 IBC 1609 & 2006 IRC 301, in accordance with ANSI/DASMA 108-02, 108-05, & ASTM E330-02.

Design Pressures (DP) typically meet requirements for the following exposure B wind speeds. These wind speeds are for 8' high doors on buildings with a flat roof height less than 30 feet.

Door Width	With windows		No windows		Backer plates
	Design Pressure	Exp B	Design Pressure	Exp B	
11'-02"	51.7 / - 59.7 (psf)	191 (mph)	51.7 / - 59.7 (psf)	191 (mph)	3
10'-06"	58.5 / - 67.6 (psf)	202 (mph)	58.5 / - 67.6 (psf)	202 (mph)	3
10'-02"	62.4 / - 72.1 (psf)	209 (mph)	62.4 / - 72.1 (psf)	209 (mph)	3
10'-00"	64.5 / - 74.5 (psf)	212 (mph)	64.5 / - 74.5 (psf)	212 (mph)	3
09'-02"	64.5 / - 74.5 (psf)	212 (mph)	70.4 / - 81.3 (psf)	221 (mph)	3
08'-02"	64.5 / - 74.5 (psf)	211 (mph)	79.0 / - 91.2 (psf)	233 (mph)	2
07'-02"	64.5 / - 74.5 (psf)	210 (mph)	90.0 / - 104 (psf)	248 (mph)	2
06'-02"	64.5 / - 74.5 (psf)	209 (mph)	105 / - 121 (psf)	266 (mph)	2

Supporting structural elements to be designed by registered professional engineer for specified wind loads. If door is not electrically operated, a lock must be installed.  
 Door height: 24'-0" max  
 Section height: 24'-0" max

Professional Engineer's seal provided only for verification of windload construction details



Details on some views may have been omitted for clarity.

The vertical wood jamb fasteners may be counter sunk to provide a flat mounting surface. See jamb attachment details for more information about attaching jambs to structure.

2" x 7/16" (nominal) stop molding to be secured with minimum 8d nail or 2-1/2" long screw on ## spacing. Stop molding not required when door is more than 1" wider than opening.

nominal (.0155) galvanized steel minimum

(.023) backer plate at each hinge location & mid-point between hinges (if required) included in quantity in chart on page 1.

(.023) backer plate at each end of section not included in quantity in chart on page 1.

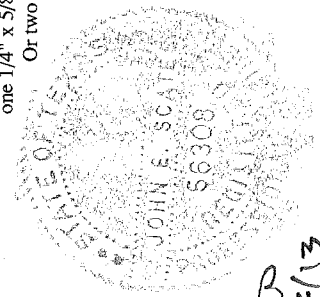
(.086) galvanized steel flag bracket fastened to wood jamb with three 5/16" x 1-5/8" wood lag screws.

Flag bracket attached to horizontal track with two 1/4" x 5/8" track bolts and nuts.

Flag bracket attached to vertical track with two 1/4" x 5/8" track bolts and nuts. Or two 1/4" x 11/32" rivets.

(.102) galvanized steel track bracket fastened to wood jamb with one 5/16" x 1-5/8" wood lag screw per bracket.

Each track bracket attached with one 1/4" x 5/8" track bolt and nut. Or two 1/4" x 11/32" rivets.



*John E. Scates*  
2/22/13

John E. Scates, P.E.  
3121 Fairgate Drive  
Carrollton, Texas 75007  
TXPE 56308, F-2203

(.109) galvanized steel bottom bracket manufactured by C.H.I. Each bracket attached with four red 1/4" x 3/4" screws.

Optional low head room bottom bracket

Aluminum extrusion

C.H.I. GALVANNEAL	DATE	2-18-2013
	ITIS	
Models:	3212, 3216, 3285	
105 (psf) / - 121 (psf) at 06'-02" through 51.7 (psf) / - 59.7 (psf) at 11'-02"		
C.H.I. Drawing: TZ14-10-63313		
page 2 of 2		

Professional Engineer's seal provided only for verification of windload construction details