

Window Options:
 1/8" DSB
 1/4" Tempered Glass
 7/16" Insulated Glass
 7/16" Tempered Insulated Glass

Door Height	Section	Quantity	Strut	Quantity	Trk Brkt	Per Side
6'-0" to 8'-0"	4	6	5			
8'-3" to 10'-0"	5	8	7			
10'-3" to 12'-0"	6	9	9			
12'-3" to 14'-0"	7	11	11			
14'-3" to 16'-0"	8	12	13			
16'-3" to 18'-0"	9	14	15			
18'-3" to 20'-0"	10	15	17			
20'-3" to 22'-0"	11	17	19			
22'-3" to 24'-0"	12	18	21			

Track bracket quantities shown are for use with grade 2 or better southern pine jambs. When using softer wood species like spruce-pine-fir (SPF) use the quantity of track brackets specified in the chart plus two track brackets per side.
 Supplemental instructions contain details for doors up to 24'-0" high. These are required in addition to this drawing for installation. Always use supplemental instructions in addition to this drawing during door installation.

Professional Engineer's Seal: JOHN E. SCATES, P.E. No. 56308

Model #: 3212, 3216, 3285

Scale: 1/8" = 1'-0"

Date: 2-18-2013

ITIS

45.8 (psf) / - 57.2 (psf) at 08'-02" through 25.9 (psf) / - 32.4 (psf) at 16'-02"

C.H.I. Drawing: YZ11-12-67313 page 1_of_2

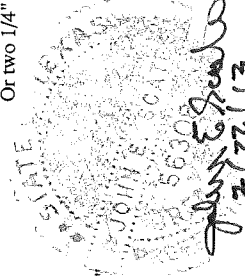
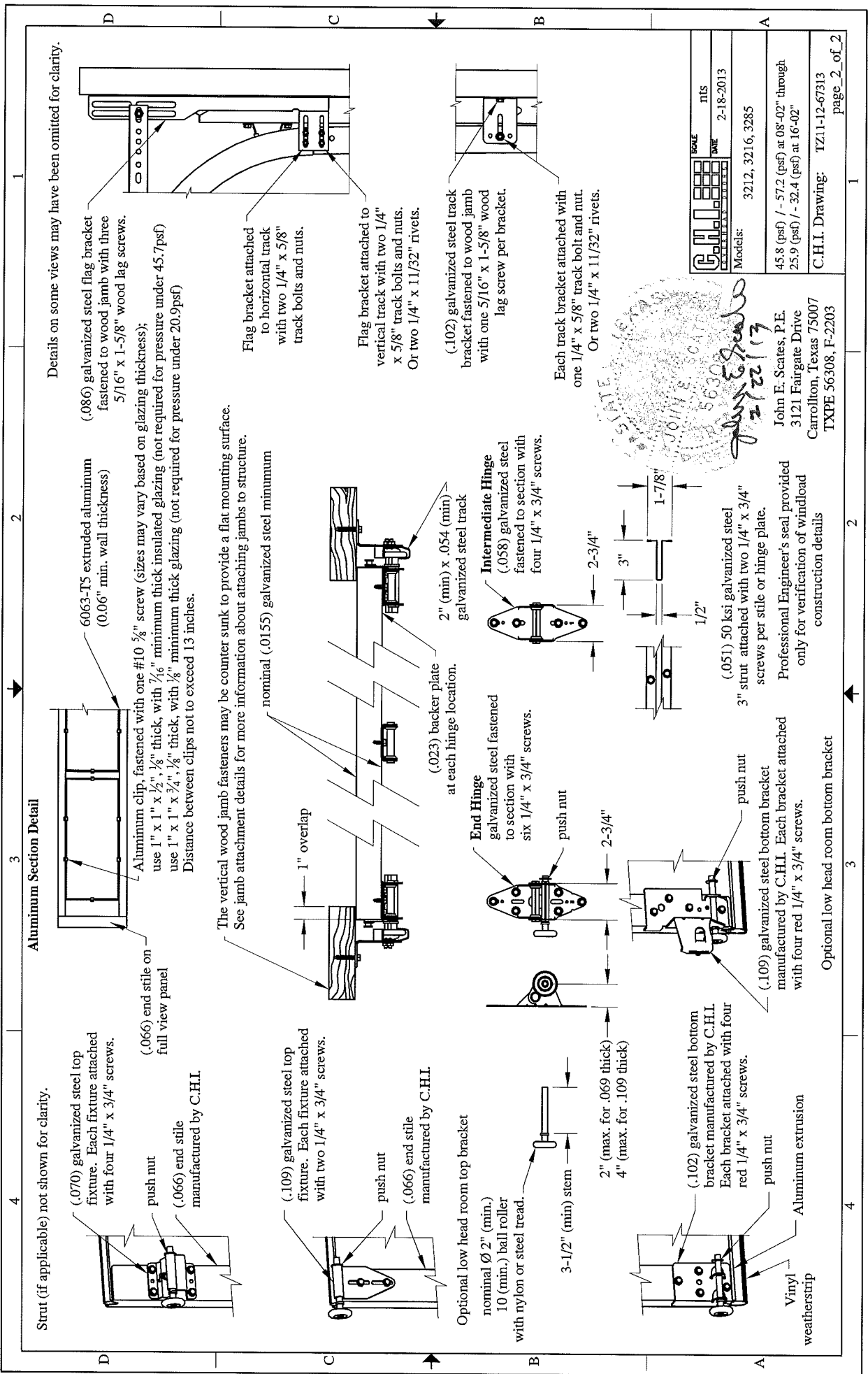
This door has been evaluated per ASCE 7-02 & 7-05 as referenced by 2006 IBC 1609 & 2006 IRC 301, in accordance with ANS/DASMA 108-02, 108-05, & ASTM E330-02. Design Pressures (DP) typically meet requirements for the following exposure B wind speeds. These wind speeds are for 8' high doors on buildings with a flat roof height less than 30 feet.

Door Width	With and Without Windows		Backer Plates
	Design Pressure	Exp B	
16'-02"	25.9 / - 32.4 (psf)	137 (mph)	3
15'-02"	29.5 / - 36.8 (psf)	146 (mph)	3
14'-02"	33.8 / - 42.2 (psf)	156 (mph)	3
13'-02"	39.1 / - 48.8 (psf)	167 (mph)	3
12'-02"	45.8 / - 57.2 (psf)	180 (mph)	2
11'-02"	45.8 / - 57.2 (psf)	180 (mph)	2
10'-02"	45.8 / - 57.2 (psf)	179 (mph)	1
09'-02"	45.8 / - 57.2 (psf)	178 (mph)	1
08'-02"	45.8 / - 57.2 (psf)	177 (mph)	1

Supporting structural elements to be designed by registered professional engineer for specified wind loads. If door is not electrically operated, a lock must be installed.
 Door height: 24'-0" max
 Section height: 24" max
 Backer plate quantity is minimum per section.

John E. Scates
 2/22/13
 John E. Scates, P.E.
 3121 Fairgate Drive
 Carrollton, Texas 75007
 TXPE 56308, F-2203

Professional Engineer's seal provided only for verification of windload construction details



SCALE	TITS
DATE	2-18-2013
Models:	3212, 3216, 3285
45.8 (psf) / - 57.2 (psf) at 08'-02" through 25.9 (psf) / - 32.4 (psf) at 16'-02"	
C.H.I. Drawing: TZ11-12-67313 page 2 of 2	

John E. Scates, P.E.
 3121 Fairgate Drive
 Carrollton, Texas 75007
 TXPE 56308, F-2203