

Window options (max 28.8 / - 35.4 psf)
 1/8" DSB
 1/4" Tempered Glass
 7/16" Insulated Glass
 7/16" Tempered Insulated Glass

| Door Height | Section | Quantity | Trk Brkt |
|------------------|---------|----------|----------|
| 6'-0" to 8'-0" | 4 | 6 | 4 |
| 8'-3" to 10'-0" | 5 | 8 | 6 |
| 10'-3" to 12'-0" | 6 | 10 | 7 |
| 12'-3" to 14'-0" | 7 | 12 | 8 |
| 14'-3" to 16'-0" | 8 | 14 | 10 |
| 16'-3" to 18'-0" | 9 | 16 | 11 |
| 18'-3" to 20'-0" | 10 | 18 | 13 |
| 20'-3" to 22'-0" | 11 | 20 | 15 |
| 22'-3" to 24'-0" | 12 | 22 | 17 |

Track bracket quantities shown are for use with grade 2 or better southern pine jambs. When using softer wood species like spruce-pine-fir (SPF) use the quantity of track brackets specified in the chart plus two track brackets per side.

Supplemental Instructions contain details for doors up to 24'-0" high. These are required in addition to this drawing for installation. Always use supplemental instructions in addition to this drawing during door installation.

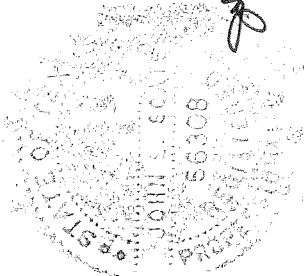
SCALE 1/8" = 1'-0"

DATE 2-12-2013

Models: 3220, 3221, 3222, 3240, 3241, 3242, 3250, 3251, 3252

30.2 (psf) / - 37.1 (psf) at 13'-06" through 22.1 (psf) / - 27.2 (psf) at 16'-02"

C.H.I.I. Drawing: TZ6-14-61313 page 1 of 2



Supporting structural elements to be designed by registered professional engineer for specified wind loads. If door is not electrically operated, a lock must be installed.
 Door height: 24'-0" max
 Section height: 24" max

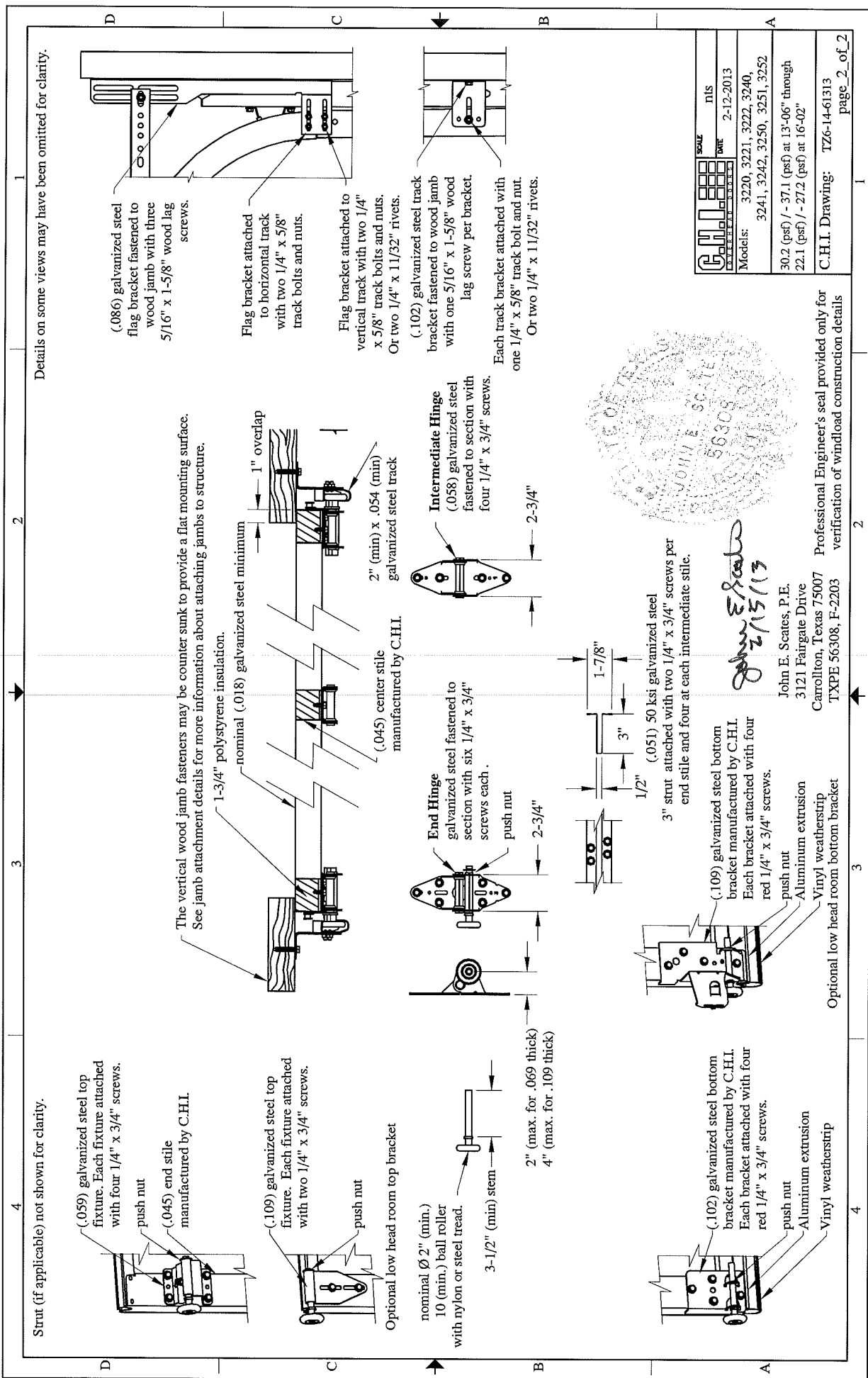
This door has been evaluated per ASCE 7-02 & 7-05 as referenced by 2006 IBC 1609 & 2006 IRC 301, in accordance with ANSI/DASMA 108-02, 108-05, & ASTM E330-02.

Design Pressures (DP) typically meet requirements for the following exposure B wind speeds. These wind speeds are for 8' high doors on buildings with a flat roof height, less than 30 feet.

| Door Width | With windows | | No windows | | Center Stiles |
|------------|---------------------|-----------|---------------------|-----------|---------------|
| | Design Pressure | Exp B | Design Pressure | Exp B | |
| 16'-02" | 22.1 / - 27.2 (psf) | 126 (mph) | 22.1 / - 27.2 (psf) | 126 (mph) | 3 |
| 15'-02" | 25.1 / - 30.9 (psf) | 134 (mph) | 25.1 / - 30.9 (psf) | 134 (mph) | 3 |
| 14'-02" | 28.8 / - 35.4 (psf) | 144 (mph) | 28.8 / - 35.4 (psf) | 144 (mph) | 3 |
| 13'-06" | 28.8 / - 35.4 (psf) | 143 (mph) | 30.2 / - 37.1 (psf) | 147 (mph) | 3 |

Center stile quantity is minimum per section.

John E. Scates
 2/15/13
 John E. Scates, P.E.
 3121 Fairgate Drive
 Carrollton, Texas 75007
 TXPE 56308, P-2203



Strut (if applicable) not shown for clarity.

(.059) galvanized steel top fixture. Each fixture attached with four 1/4" x 3/4" screws.

push nut

(.045) end stile manufactured by C.H.I.

(.109) galvanized steel top fixture. Each fixture attached with two 1/4" x 3/4" screws.

push nut

Optional low head room top bracket

nominal \varnothing 2" (min.) 10 (min.) ball roller with nylon or steel tread.

3-1/2" (min.) stem

2" (max. for .069 thick)
4" (max. for .109 thick)

The vertical wood jamb fasteners may be counter sunk to provide a flat mounting surface. See jamb attachment details for more information about attaching jambs to structure.

1-3/4" polystyrene insulation.

nominal (.018) galvanized steel minimum

1" overlap

2" (min) x .054 (min) galvanized steel track

(.045) center stile manufactured by C.H.I.

End Hinge galvanized steel fastened to section with six 1/4" x 3/4" screws each.

push nut

2-3/4"

Intermediate Hinge (.058) galvanized steel fastened to section with four 1/4" x 3/4" screws.

2-3/4"

(.102) galvanized steel bottom bracket manufactured by C.H.I. Each bracket attached with four 1/4" x 3/4" screws.

push nut

Aluminum extrusion

Vinyl weatherstrip

Optional low head room bottom bracket

(.109) galvanized steel bottom bracket manufactured by C.H.I. Each bracket attached with four 1/4" x 3/4" screws.

push nut

Aluminum extrusion

Vinyl weatherstrip

3" strut attached with two 1/4" x 3/4" screws per end stile and four at each intermediate stile.

(.051) 50 ksi galvanized steel

1/2" 1-7/8" 3" 2-3/4"

Details on some views may have been omitted for clarity.

(.086) galvanized steel flag bracket fastened to wood jamb with three 5/16" x 1-5/8" wood lag screws.

Flag bracket attached to horizontal track with two 1/4" x 5/8" track bolts and nuts.

Flag bracket attached to vertical track with two 1/4" x 5/8" track bolts and nuts. Or two 1/4" x 11/32" rivets.

(.102) galvanized steel track bracket fastened to wood jamb with one 5/16" x 1-5/8" wood lag screw per bracket.

Each track bracket attached with one 1/4" x 5/8" track bolt and nut. Or two 1/4" x 11/32" rivets.

| | | |
|-----------------|---|--------------|
| | SCALE | NIS |
| | DATE | 2-12-2013 |
| Models: | 3220, 3221, 3222, 3240, 3241, 3242, 3250, 3251, 3252 | |
| | 30.2 (psf) / - 37.1 (psf) at 13'-06" through 22.1 (psf) / - 27.2 (psf) at 16'-02" | |
| C.H.I. Drawing: | | TZ6-14-61313 |
| | | page 2 of 2 |



John E. Scates
2/15/13

John E. Scates, P.E.
3121 Faingate Drive
Carrollton, Texas 75007
TXPE 56308, F-2203

Professional Engineer's seal provided only for verification of windload construction details