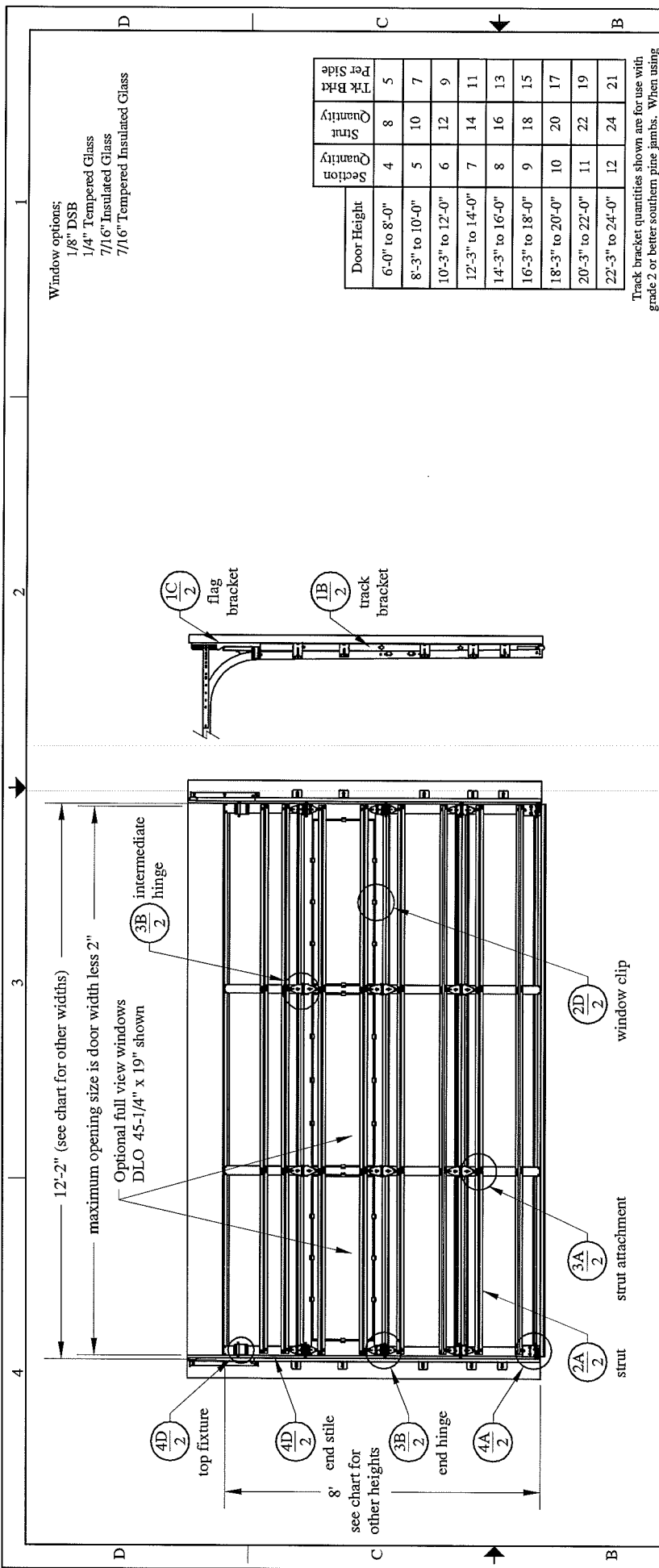


Window options:
 1/8" DSB
 1/4" Tempered Glass
 7/16" Insulated Glass
 7/16" Tempered Insulated Glass



This door has been evaluated per ASCE 7-02 & 7-05 as referenced by 2006 IBC 1609 & 2006 IRC 301, in accordance with ANSI/DASMA 108-02, 108-05, & ASTM E330-02. Design Pressures (DP) typically meet requirements for the following exposure B wind speeds. These wind speeds are for 8' high doors on buildings with a flat roof height less than 30 feet.

Door Width	With and Without Windows		center stiles
	Design Pressure	Exp B	
14'-02"	33.6 / - 44.8 (psf)	155 (mph)	3
13'-02"	38.9 / - 51.8 (psf)	167 (mph)	3
12'-02"	45.6 / - 60.7 (psf)	180 (mph)	2
11'-02"	45.6 / - 60.7 (psf)	179 (mph)	2
10'-02"	45.6 / - 60.7 (psf)	179 (mph)	2
09'-02"	45.6 / - 60.7 (psf)	178 (mph)	1
08'-02"	45.6 / - 60.7 (psf)	177 (mph)	1

Center stile quantity is minimum per section.

Supporting structural elements to be designed by registered professional engineer for specified wind loads. If door is not electrically operated, a lock must be installed. Door height: 24'-0" max Section height: 24" max



John E. Scates
 7/15/13
 John E. Scates, P.E.
 3121 Fairgate Drive
 Carrollton, Texas 75007
 TXPE 56308, F-2203

Professional Engineer's seal provided only for verification of windload construction details

SCALE 1/8" = 1'-0"

DATE 2-12-2013

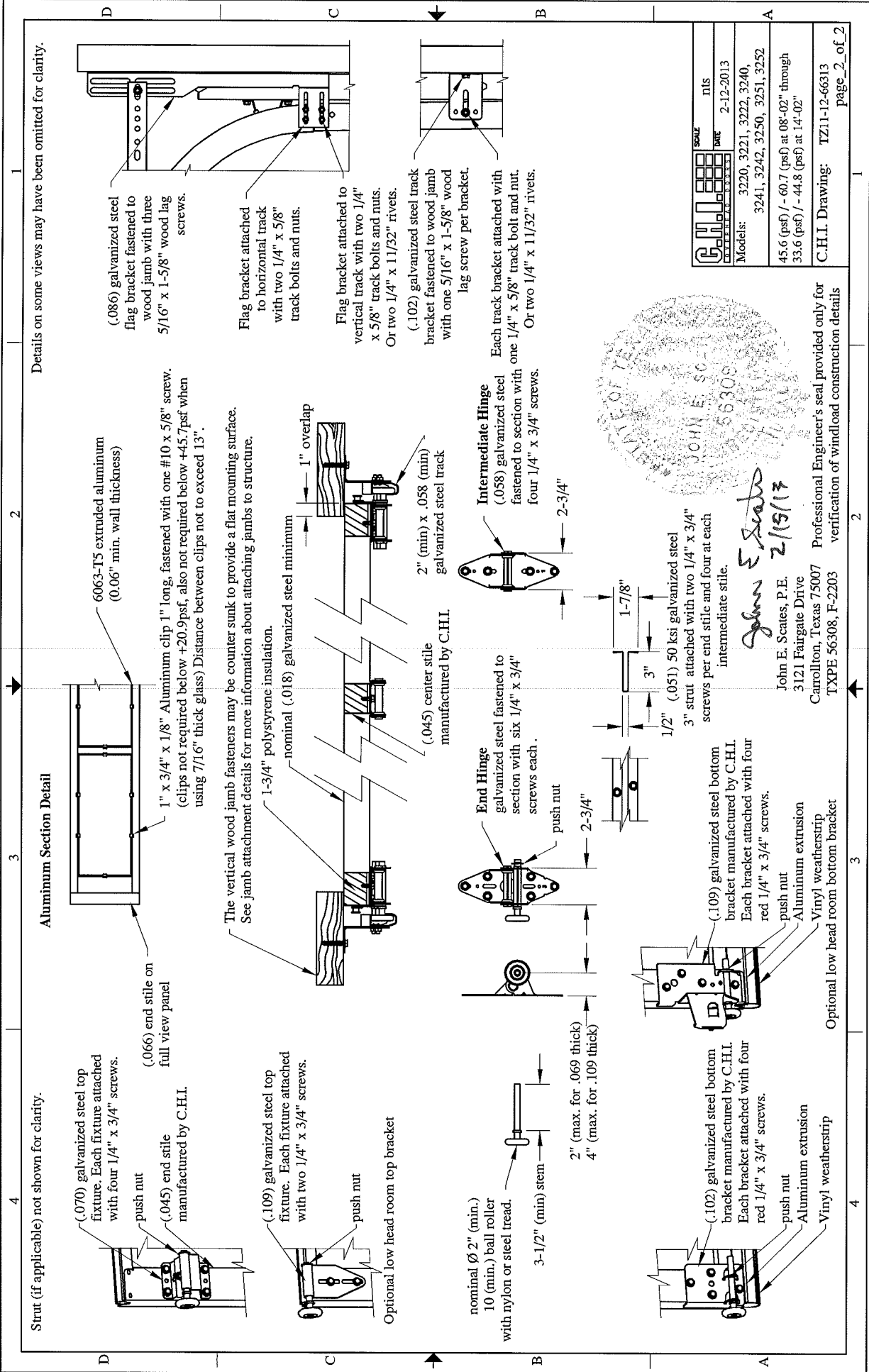
Models: 3220, 3221, 3222, 3240, 3241, 3242, 3250, 3251, 3252

45.6 (psf) / - 60.7 (psf) at 08'-02" through 33.6 (psf) / - 44.8 (psf) at 14'-02"

C.H.I. Drawing: TZ11-12-66313 page 1_of_2

Track bracket quantities shown are for use with grade 2 or better southern pine jambs. When using softer wood species like spruce-pine-fir (SPF) use the quantity of track brackets specified in the chart plus two track brackets per side.

Supplemental Instructions contain details for doors up to 24'-0" high. These are required in addition to this drawing for installation. Always use supplemental instructions in addition to this drawing during door installation.



Strut (if applicable) not shown for clarity.

Details on some views may have been omitted for clarity.

(.070) galvanized steel top fixture. Each fixture attached with four 1/4" x 3/4" screws.

(.066) end stile on full view panel

(.045) end stile manufactured by C.H.I.

(.109) galvanized steel top fixture. Each fixture attached with two 1/4" x 3/4" screws.

push nut

Optional low head room top bracket

nominal Ø 2" (min.) 10 (min.) ball roller with nylon or steel tread.

3-1/2" (min) stem

2" (max. for .069 thick)

4" (max. for .109 thick)

(.102) galvanized steel bottom bracket manufactured by C.H.I. Each bracket attached with four red 1/4" x 3/4" screws.

push nut
Aluminum extrusion
Vinyl weatherstrip

Optional low head room bottom bracket

Aluminum Section Detail

6063-T5 extruded aluminum (0.06" min. wall thickness)

1" x 3/4" x 1/8" Aluminum clip 1" long, fastened with one #10 x 5/8" screw. (clips not required below +20.9psf, also not required below +45.7psf when using 7/16" thick glass) Distance between clips not to exceed 13".

The vertical wood jamb fasteners may be counter sunk to provide a flat mounting surface. See jamb attachment details for more information about attaching jambs to structure.

1-3/4" polystyrene insulation.

nominal (.018) galvanized steel minimum

1" overlap

2" (min) x .058 (min) galvanized steel track

(.045) center stile manufactured by C.H.I.

Intermediate Hinge (.058) galvanized steel fastened to section with four 1/4" x 3/4" screws.

2-3/4"

End Hinge galvanized steel fastened to section with six 1/4" x 3/4" screws each.

push nut

2-3/4"

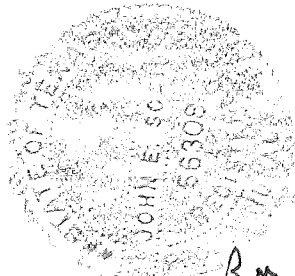
1-7/8"

3" strut attached with two 1/4" x 3/4" screws per end stile and four at each intermediate stile.

(.109) galvanized steel bottom bracket manufactured by C.H.I. Each bracket attached with four red 1/4" x 3/4" screws.

push nut
Aluminum extrusion
Vinyl weatherstrip

	SCALE	NIS
	DATE	2-12-2013
Models:	3220, 3221, 3222, 3240,	
	3241, 3242, 3250, 3251, 3252	
	45.6 (psf) / - 60.7 (psf) at 08'-02" through	
	33.6 (psf) / - 44.8 (psf) at 14'-02"	
C.H.I. Drawing:		TZ11-12-66313
		page 2 of 2



John E. Scates
2/19/13

John E. Scates, P.E.
3121 Fairgate Drive
Carrollton, Texas 75007
TXPE 56308, F-2203
Professional Engineer's seal provided only for verification of windload construction details