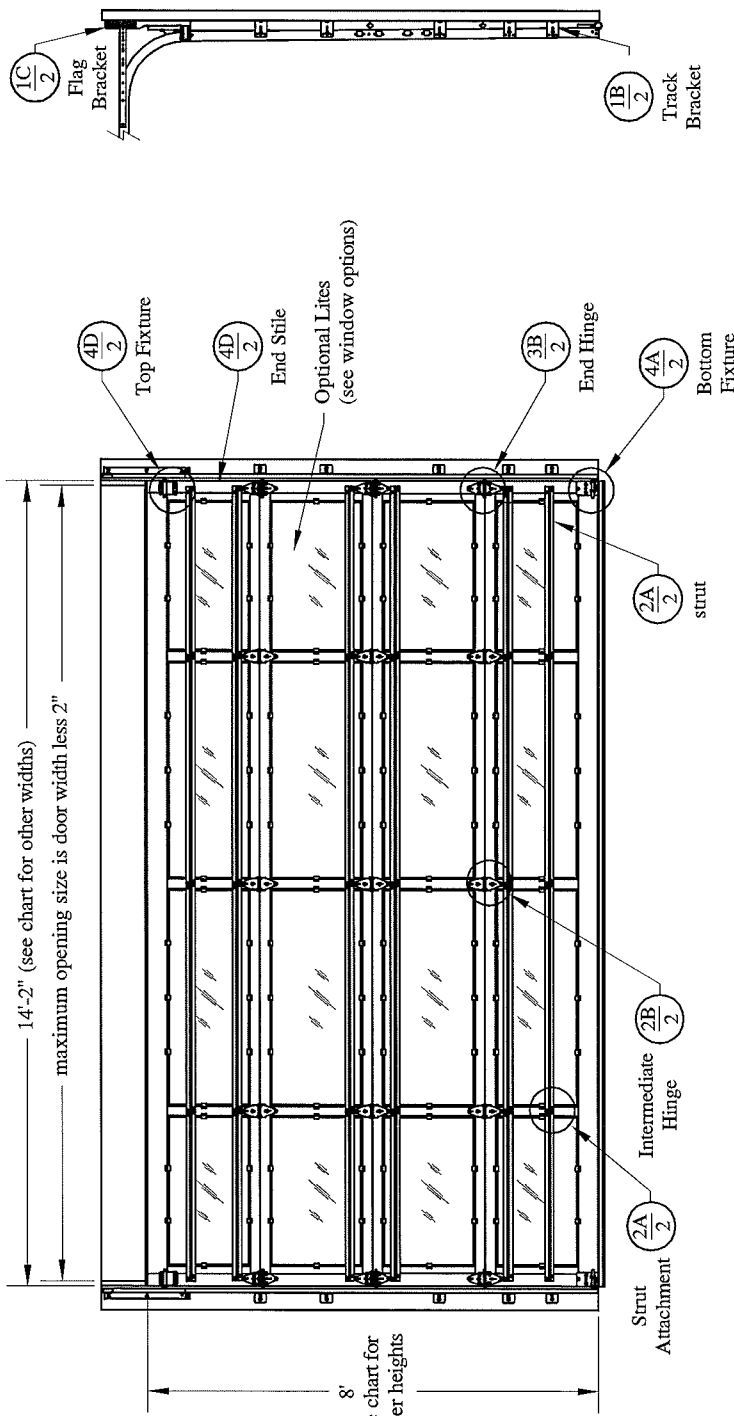


Window Options:
 max daylight opening 45-1/4" x 19"
 1/8" DSB
 1/4" Tempered Glass
 7/16" Insulated Glass
 7/16" Tempered Insulated Glass
 .049" Aluminum Panel
 7/16" Insulated Aluminum Panel



Door Height	Section Quantity	Trk Bkt Quantity	Per Side
6'-0" to 8'-0"	4	6	5
8'-3" to 10'-0"	5	8	7
10'-3" to 12'-0"	6	9	9
12'-3" to 14'-0"	7	11	11
14'-3" to 16'-0"	8	12	13
16'-3" to 18'-0"	9	14	15
18'-3" to 20'-0"	10	15	17
20'-3" to 22'-0"	11	17	19
22'-3" to 24'-0"	12	18	21

Track bracket quantities shown are for use with grade 2 or better southern pine jambs. When using softer wood species like spruce-pine-fir (SPF) use the quantity of track brackets specified in the chart plus two track brackets per side.

Supplemental Instructions contain details for doors up to 24'-0" high. These are required in addition to this drawing for installation. Always use supplemental instructions in addition to this drawing during door installation.

SCALE	DATE	NO.	REV.
1/8" = 1'-0"	3-1-2013		

Models: 3290, 3295, 329X

38.2 (psf) / -42.8 (psf) at 12'-0" through
 23.2 (psf) / -26.0 (psf) at 18'-0"

C.H.I. Drawing: TZ9-14-64313 page 1 of 2

Professional Engineer's seal provided only for verification of windload construction details

John E. Scates, P.E.
 3121 Fairgate Drive
 Carrollton, Texas 75007
 TXPE 56308, F-2203

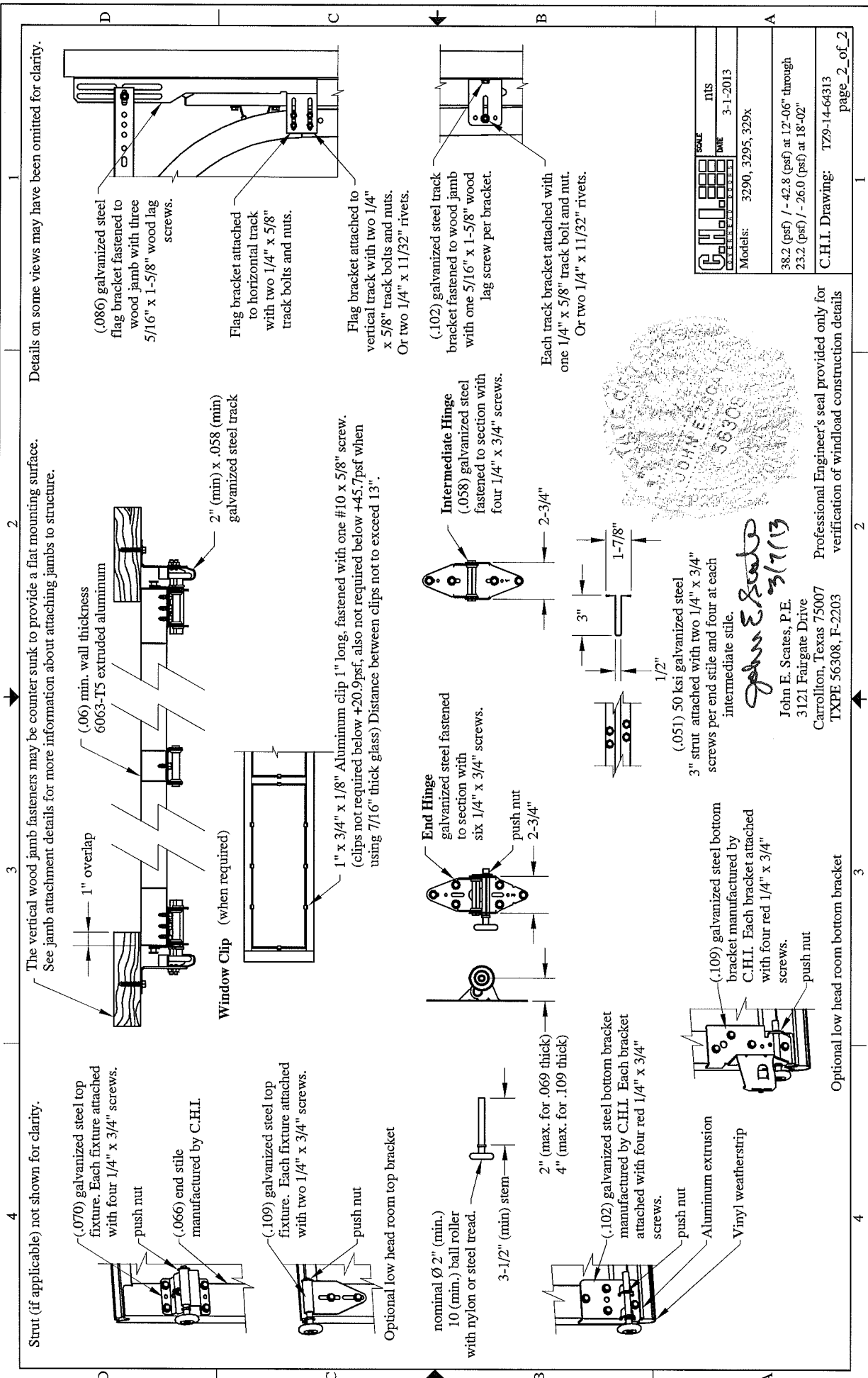
This door has been evaluated per ASCE 7-02 & 7-05 as referenced by 2006 IBC 1609 & 2006 IRC 301, in accordance with ANSI/DASMA 108-02, 108-05, & ASTM E330-02. Design Pressures (DP) typically meet requirements for the following exposure B wind speeds. These wind speeds are for 8' high doors on buildings with a flat roof height less than 30 feet.

Door Width	With and Without Windows		Center Stiles
	Design Pressure	Exp B	
18'-02"	23.2 / - 26.0 (psf)	130 (mph)	4
17'-02"	26.0 / - 29.1 (psf)	137 (mph)	4
16'-06"	28.2 / - 31.6 (psf)	143 (mph)	3
16'-02"	29.3 / - 32.9 (psf)	146 (mph)	3
15'-02"	33.3 / - 37.3 (psf)	155 (mph)	3
14'-02"	38.2 / - 42.8 (psf)	165 (mph)	3
13'-02"	38.2 / - 42.8 (psf)	165 (mph)	3
12'-06"	38.2 / - 42.8 (psf)	165 (mph)	2

Center stile quantity is minimum per section.

Supporting structural elements to be designed by registered professional engineer for specified wind loads. If door is not electrically operated, a lock must be installed.

Door height: 24'-0" max
 Section height: 24" max



Details on some views may have been omitted for clarity.

The vertical wood jamb fasteners may be counter sunk to provide a flat mounting surface. See jamb attachment details for more information about attaching jambs to structure.

Strut (if applicable) not shown for clarity.

SCALE	nts
	3-1-2013
Models:	3290, 3295, 329x
	38.2 (psf) / - 42.8 (psf) at 12'-06" through 23.2 (psf) / - 26.0 (psf) at 18'-02"
C.H.I. Drawing: T79-14-64313	
page 2_of_2	



John E. Scates
3/17/13

John E. Scates, P.E.
3121 Fairgate Drive
Carrollton, Texas 75007
TXPE 56308, F-2203

Professional Engineer's seal provided only for verification of windload construction details

Optional low head room bottom bracket