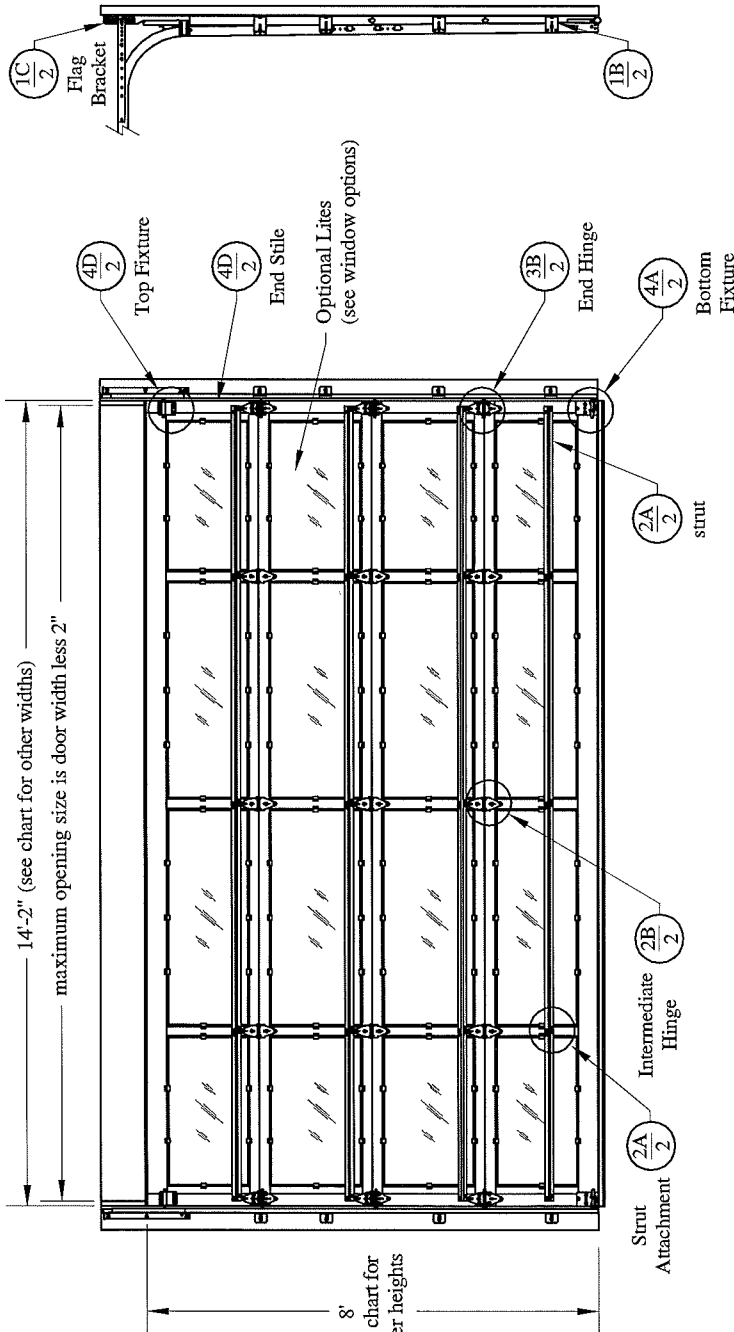


Window Options:  
 max daylight opening 45-1/4" x 19"  
 1/8" DSB  
 1/4" Tempered Glass  
 7/16" Insulated Glass  
 7/16" Tempered Insulated Glass  
 .049" Aluminum Panel  
 7/16" Insulated Aluminum Panel



Door Height	Section	Quantity	Trk Bkt Per Side
6'-0" to 8'-0"	4	4	4
8'-3" to 10'-0"	5	5	6
10'-3" to 12'-0"	6	6	7
12'-3" to 14'-0"	7	7	8
14'-3" to 16'-0"	8	8	10
16'-3" to 18'-0"	9	9	11
18'-3" to 20'-0"	10	10	13
20'-3" to 22'-0"	11	11	15
22'-3" to 24'-0"	12	12	17

Track bracket quantities shown are for use with grade 2 or better southern pine jambs. When using softer wood species like spruce-pine-fir (SPF) use the quantity of track brackets specified in the chart plus two track brackets per side.

Supplemental Instructions contain details for doors up to 24'-0" high. These are required in addition to this drawing for installation. Always use supplemental instructions in addition to this drawing during door installation.

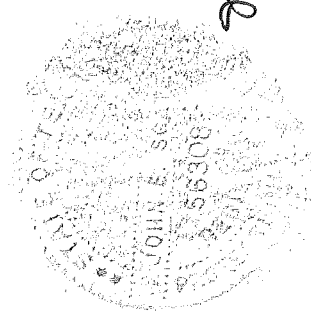


Models: 3290, 3295, 329x

31.3 (psf) / - 34.9 (psf) at 13'-10" through  
 27.9 (psf) / - 31.1 (psf) at 15'-00"

C.H.I. Drawing: TZ7-14-64313

page 1 of 2



*John E. Scates*  
 3/17/13  
 John E. Scates, P.E.  
 3121 Fairgate Drive  
 Carrollton, Texas 75007  
 TXPE 56308, F-2203

This door has been evaluated per ASCE 7-02 & 7-05 as referenced by 2006 IBC 1609 & 2006 IRC 301, in accordance with ANSI/DASMA 108-02, 108-05, & ASTM E330-02.

Design Pressures (DP) typically meet requirements for the following exposure B wind speeds. These wind speeds are for 8' high doors on buildings with a flat roof height less than 30 feet.

Supporting structural elements

to be designed by registered

professional engineer for

specified wind loads. If door is

not electrically operated, a lock

must be installed.

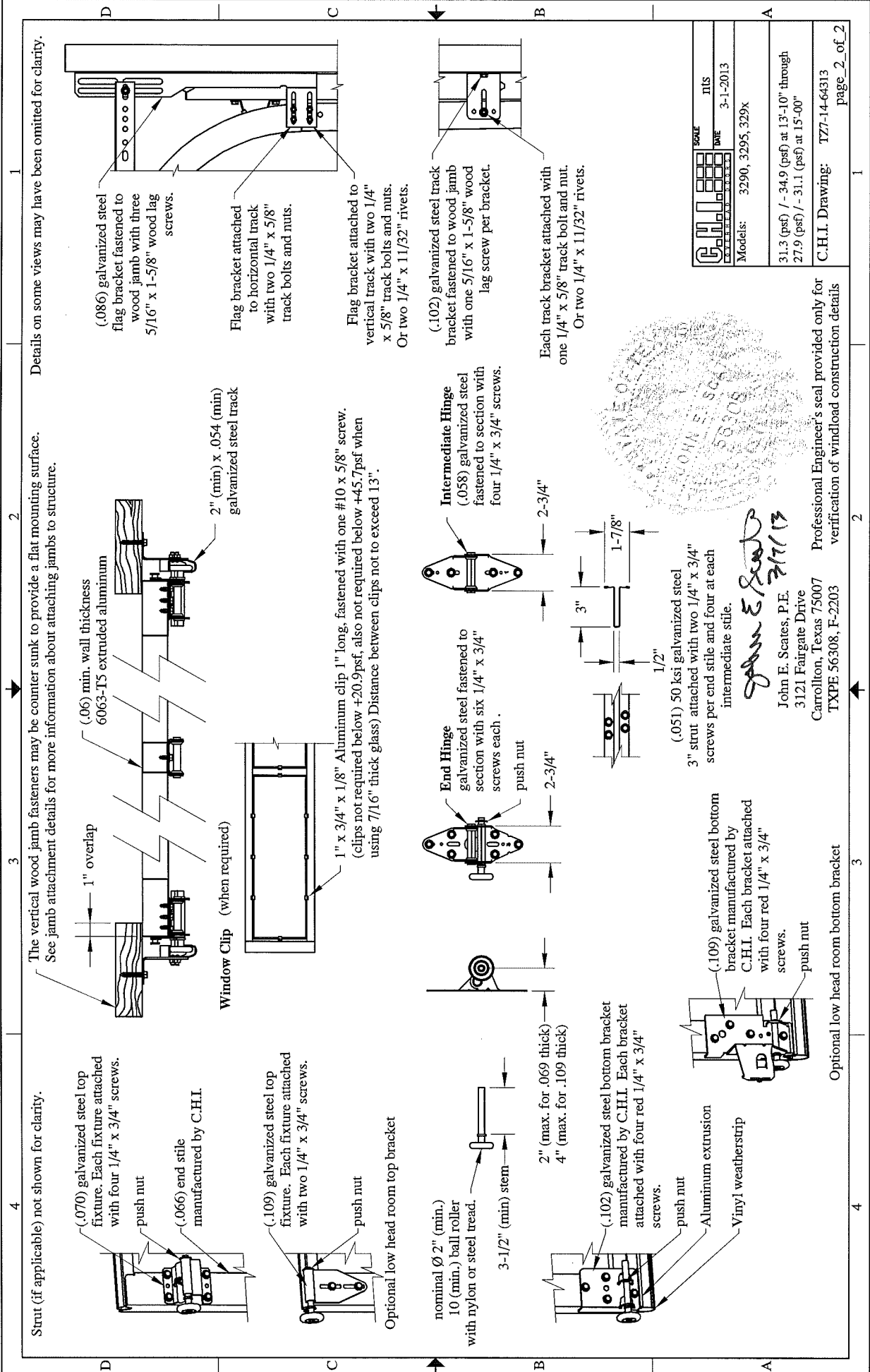
Door height: 24'-0" max

Section height: 24" max

Door Width	With and Without Windows Design Pressure	Center Stiles Exp B	Center Stiles
15'-00"	27.9 / - 31.1 (psf)	142 (mph)	3
14'-02"	31.3 / - 34.9 (psf)	150 (mph)	3
13'-10"	31.3 / - 34.9 (psf)	150 (mph)	3

Center stile quantity is minimum per section.

Professional Engineer's seal provided only for verification of windload construction details



Professional Engineer's seal provided only for verification of windload construction details

John E. Seates, P.E.  
3121 Fargate Drive  
Carrollton, Texas 75007  
TXPE 56308, F-2203

3/11/13

Optional low head room bottom bracket

Professional Engineer's seal provided only for verification of windload construction details