

Window Options:
 max daylight opening 45-1/4" x 19"
 1/8" DSB
 1/4" Tempered Glass
 7/16" Insulated Glass
 7/16" Tempered Insulated Glass
 .049" Aluminum Panel
 7/16" Insulated Aluminum Panel

Door Height	Section	Strut Quantity	Trk Bkt Per Side
6'-0" to 8'-0"	4	4	4
8'-3" to 10'-0"	5	5	6
10'-3" to 12'-0"	6	6	7
12'-3" to 14'-0"	7	7	8
14'-3" to 16'-0"	8	8	10
16'-3" to 18'-0"	9	9	11
18'-3" to 20'-0"	10	10	13
20'-3" to 22'-0"	11	11	15
22'-3" to 24'-0"	12	12	17

Track bracket quantities shown are for use with grade 2 or better southern pine jambs. When using softer wood species like spruce-pine-fir (SPPF) use the quantity of track brackets specified in the chart plus two track brackets per side.

Supplemental Instructions contain details for doors up to 24'-0" high. These are required in addition to this drawing for installation. Always use supplemental instructions in addition to this drawing during door installation.

SOFT	
DATE	3-1-2013
MODELS	3290, 3295, 329X
NLS	
27.5 (psf) / - 30.6 (psf) at 15'-02" through	
17.7 (psf) / - 19.7 (psf) at 20'-02"	
C.H.I. Drawing: TZ6-16-64313	
page 1 of 2	



John E. Scates
 3/7/13
 John E. Scates, P.E.
 3121 Fairgate Drive
 Carrollton, Texas 75007
 TXPE 56308, F-2203

Professional Engineer's seal provided only for verification of windload construction details

This door has been evaluated per ASCE 7-02 & 7-05 as referenced by 2006 IBC 1609 & 2006 IRC 301, in accordance with ANSI/DASMA 108-02, 108-05, & ASTM E330-02. Design Pressures (DP) typically meet requirements for the following exposure B wind speeds. These wind speeds are for 8' high doors on buildings with a flat roof height less than 30 feet.

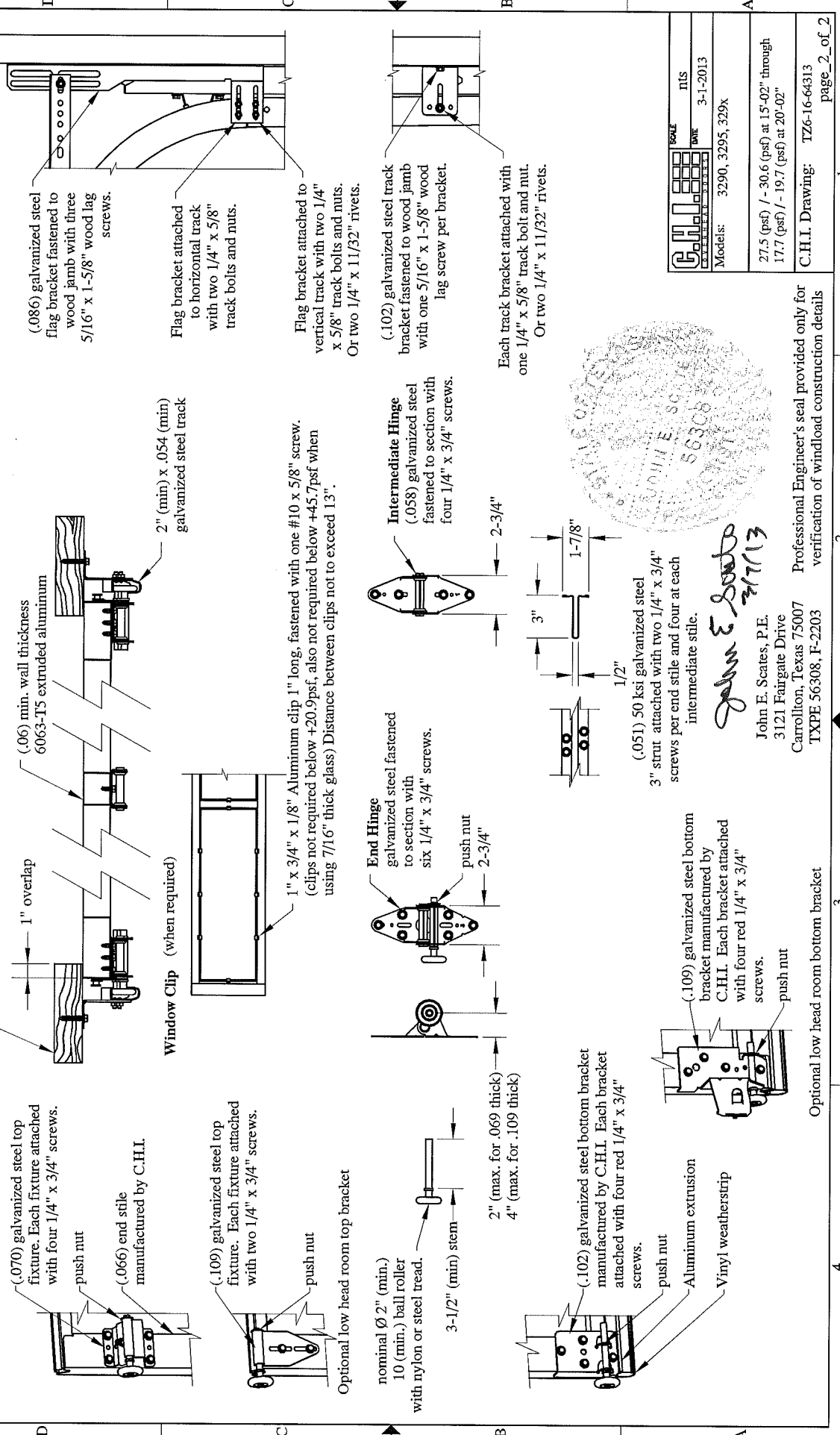
Door Width	Design Pressure	Exp B	Center Stiles
20'-02"	17.7 / - 19.7 (psf)	114 (mph)	4
19'-02"	19.6 / - 21.8 (psf)	120 (mph)	4
18'-02"	21.8 / - 24.2 (psf)	126 (mph)	4
17'-02"	24.4 / - 27.1 (psf)	133 (mph)	4
16'-06"	26.4 / - 29.4 (psf)	138 (mph)	3
16'-02"	27.5 / - 30.6 (psf)	141 (mph)	3
15'-02"	27.5 / - 30.6 (psf)	141 (mph)	3

Supporting structural elements to be designed by registered professional engineer for specified wind loads. If door is not electrically operated, a lock must be installed.
 Door height: 24'-0" max
 Section height: 24" max
 Center stile quantity is minimum per section.

Strut (if applicable) not shown for clarity.

The vertical wood jamb fasteners may be counter sunk to provide a flat mounting surface. See jamb attachment details for more information about attaching jambs to structure.

Details on some views may have been omitted for clarity.



	SCALE	nts
	DATE	3-1-2013
Model:	3290, 3295, 329X	
27.5 (psf) / - 30.6 (psf) at 15'-02" through 17.7 (psf) / - 19.7 (psf) at 20'-02"		
C.H.I. Drawing: TZ6-16-64313 page 2 of 2		



John E. Scates
 3/17/13
 John E. Scates, P.E.
 3121 Fairgate Drive
 Carrollton, Texas 75007
 TXPE 56308, F-2203

Professional Engineer's seal provided only for verification of windload construction details

Optional low head room bottom bracket