

Window Options:  
 max daylight opening 49-1/8" x 19"  
 1/8" DSB  
 1/4" Tempered Glass  
 7/16" Insulated Glass  
 7/16" Tempered Insulated Glass  
 .049" Aluminum Panel  
 7/16" Insulated Aluminum Panel

Door Height	Section Quantity	Strut Quantity	Trk Brkt Per Side
6'-0" to 8'-0"	4	0	3
8'-3" to 10'-0"	5	0	4
10'-3" to 12'-0"	6	0	5
12'-3" to 14'-0"	7	0	6
14'-3" to 16'-0"	8	0	8
16'-3" to 18'-0"	9	0	9
18'-3" to 20'-0"	10	0	10
20'-3" to 22'-0"	11	0	12
22'-3" to 24'-0"	12	0	13

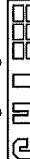
Track bracket quantities shown are for use with grade 2 or better spruce-pine-fir (SPF) or southern pine jambs.

This door has been evaluated per ASCE 7-02 & 7-05 as referenced by 2006 IBC 1609 & 2006 IRC 301, in accordance with ANS/DASMA 108-02, 108-05, & ASTM E330-02. Design Pressures (DP) typically meet requirements for the following exposure B wind speeds. These wind speeds are for 8' high doors on buildings with a flat roof height less than 30 feet.

Door Width	Design Pressure		Center Stiles	
	With	Without	Exp B	Stiles
13'-02"	20.7 / - 23.3 (psf)	115 (mph)	3	
12'-02"	20.7 / - 23.3 (psf)	119 (mph)	2	
11'-02"	20.7 / - 23.3 (psf)	121 (mph)	2	
10'-02"	20.7 / - 23.3 (psf)	121 (mph)	2	
09'-02"	20.7 / - 23.3 (psf)	120 (mph)	1	
08'-02"	20.7 / - 23.3 (psf)	120 (mph)	1	
07'-02"	20.7 / - 23.3 (psf)	119 (mph)	1	
06'-02"	20.7 / - 23.3 (psf)	119 (mph)	1	

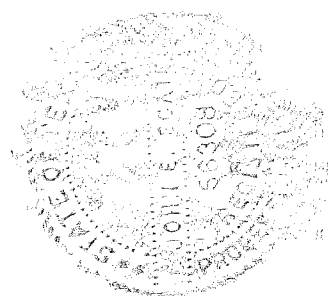
Supporting structural elements to be designed by registered professional engineer for specified wind loads. If door is not electrically operated, a lock must be installed.  
 Door height: 24'-0" max  
 Section height: 24" max  
 Center stile quantity is minimum per section.

Supplemental Instructions contain details for doors up to 24'-0" high. These are required in addition to this drawing for installation. Always use supplemental instructions in addition to this drawing during door installation.


 SCALE: NTS  
 DATE: 3-1-2013  
 Models: 3290, 3295, 329X

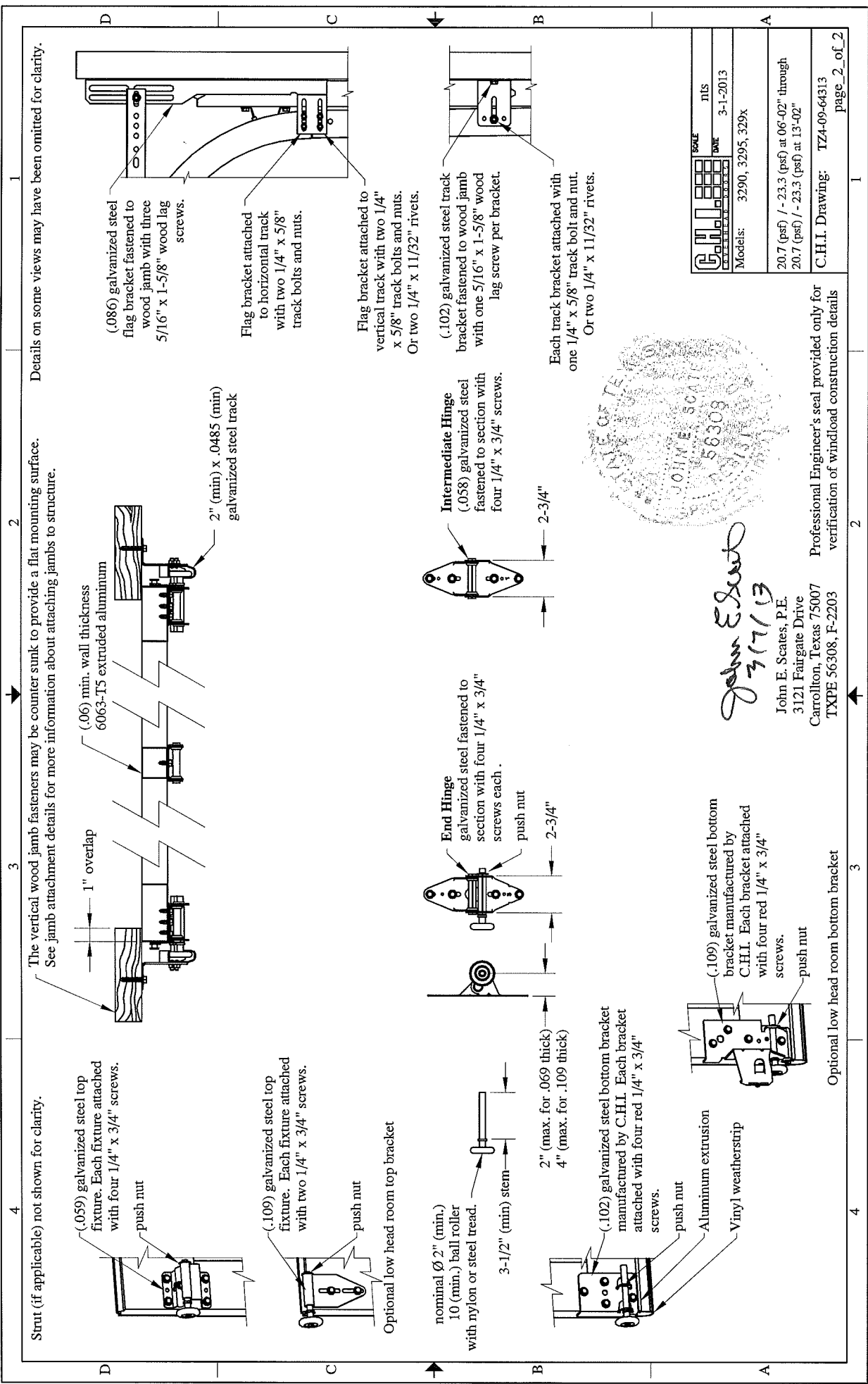
20.7 (psf) / - 23.3 (psf) at 06'-02" through  
 20.7 (psf) / - 23.3 (psf) at 13'-02"

C.H.I. Drawing: TZ4-09-64313 page 1 of 2

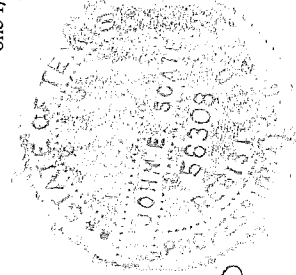


Professional Engineer's seal provided only for verification of windload construction details

John E. Scates  
 3/17/13  
 John E. Scates, P.E.  
 3121 Fairgate Drive  
 Carrollton, Texas 75007  
 TXPE 56308, F-2203



Details on some views may have been omitted for clarity.



*John E. Scates*  
 3/17/13  
 John E. Scates, P.E.  
 3121 Fairgate Drive  
 Carrollton, Texas 75007  
 TXPE 56308, F-2203

	SCALE	NIS
	DATE	3-1-2013
Models: 3290, 3295, 329x		
20.7 (psf) / - 23.3 (psf) at 06'-02" through		
20.7 (psf) / - 23.3 (psf) at 13'-02"		
C.H.I. Drawing: TZ4-09-64313		
page_2_of_2		

Professional Engineer's seal provided only for verification of windload construction details

Optional low head room bottom bracket