

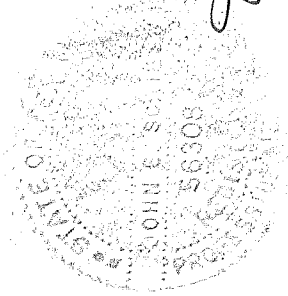
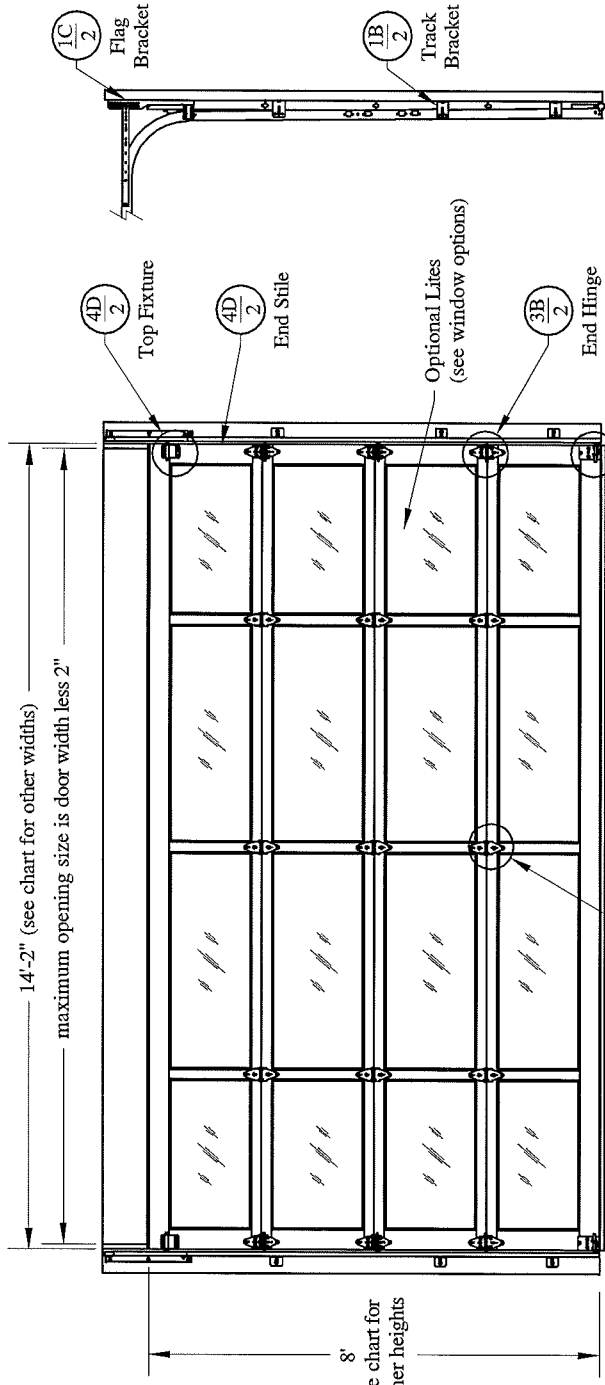
Window Options:  
 max daylight opening 45-1/4" x 19"  
 1/8" DSB  
 1/4" Tempered Glass  
 7/16" Insulated Glass  
 7/16" Tempered Insulated Glass  
 .049" Aluminum Panel  
 7/16" Insulated Aluminum Panel

Door Height	Section Quantity	Strut Quantity	Trk Brkt Per Side
6'-0" to 8'-0"	4	0	3
8'-3" to 10'-0"	5	0	4
10'-3" to 12'-0"	6	0	5
12'-3" to 14'-0"	7	0	6
14'-3" to 16'-0"	8	0	8
16'-3" to 18'-0"	9	0	9
18'-3" to 20'-0"	10	0	10
20'-3" to 22'-0"	11	0	12
22'-3" to 24'-0"	12	0	13

Track bracket quantities shown are for use with grade 2 or better spruce-pine-fir (SPF) or southern pine jambs.

Supplemental Instructions contain details for doors up to 24'-0" high. These are required in addition to this drawing for installation. Always use supplemental instructions in addition to this drawing during door installation.

SCALE		INS
ONE	3-1-2013	
Models: 3290, 3295, 329X		
17.1 (psf) / - 19.2 (psf) at 13'-04" through		
17.1 (psf) / - 19.2 (psf) at 14'-02"		
C.H.I. Drawing: TZ3-14-64313		
page 1 of 2		



*John E. Scates*  
 3/17/13

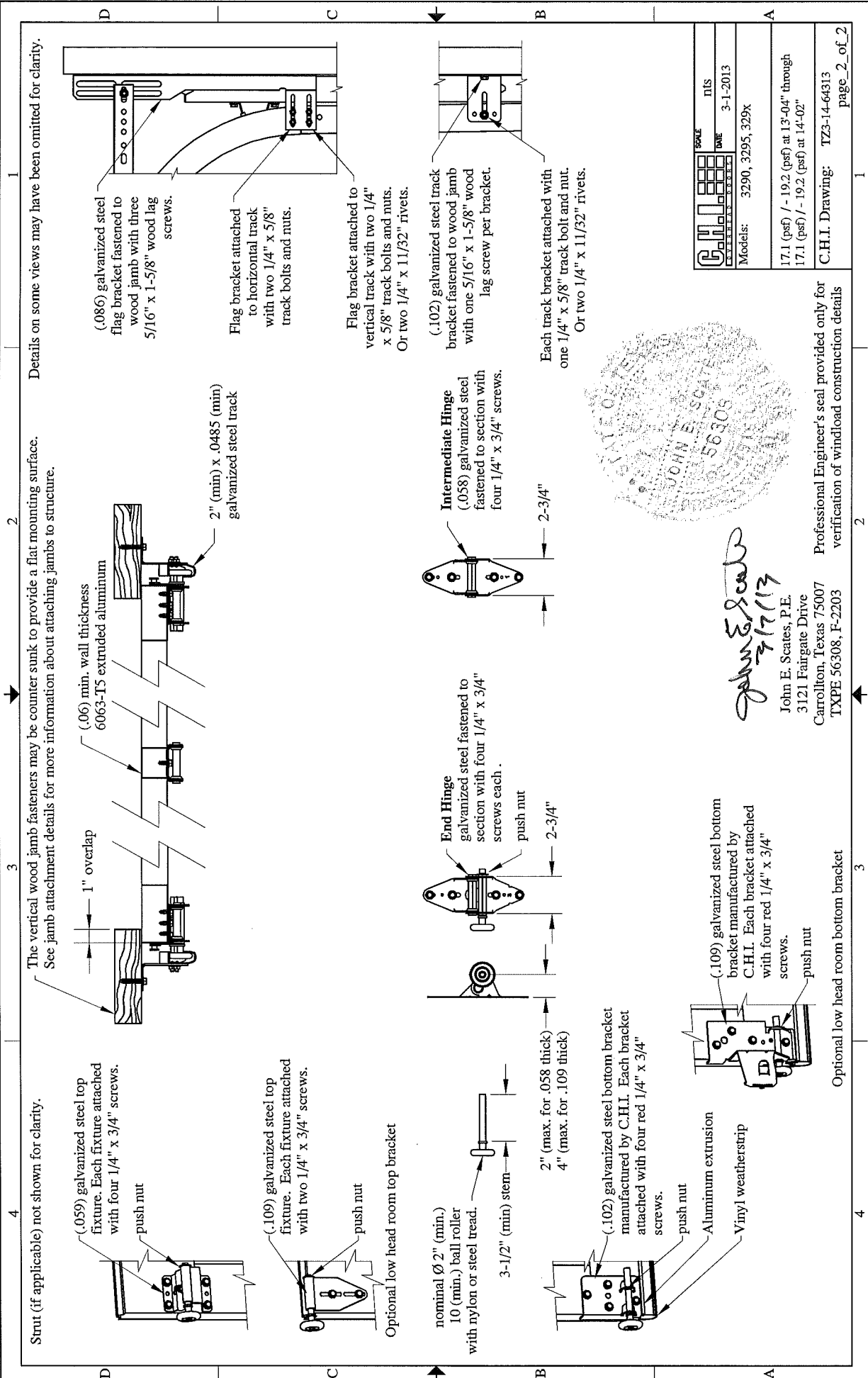
John E. Scates, P.E.  
 3121 Fairgate Drive  
 Carrollton, Texas 75007  
 TXPE 56308, F-2203

This door has been evaluated per ASCE 7-02 & 7-05 as referenced by 2006 IBC 1609 & 2006 IRC 301, in accordance with ANSI/DASMA 108-02, 108-05, & ASTM E330-02. Design Pressures (DP) typically meet requirements for the following exposure B wind speeds. These wind speeds are for 8' high doors on buildings with a flat roof height less than 30 feet.

Supporting structural elements to be designed by registered professional engineer for specified wind loads. If door is not electrically operated, a lock must be installed.  
 Door height: 24'-0" max  
 Section height: 24" max

Door Width	Design Pressure	Exp B	Center Stiles
14'-02"	17.1 / - 19.2 (psf)	111 (mph)	3
13'-04"	17.1 / - 19.2 (psf)	110 (mph)	3

Professional Engineer's seal provided only for verification of windload construction details



The vertical wood jamb fasteners may be counter sunk to provide a flat mounting surface. See jamb attachment details for more information about attaching jambs to structure.

Strut (if applicable) not shown for clarity.

Optional low head room top bracket

Details on some views may have been omitted for clarity.

(.059) galvanized steel top fixture. Each fixture attached with four 1/4" x 3/4" screws. push nut

(.109) galvanized steel top fixture. Each fixture attached with two 1/4" x 3/4" screws. push nut

nominal Ø 2" (min.) 10 (min.) ball roller with nylon or steel tread. 3-1/2" (min) stem

2" (max. for .058 thick) 4" (max. for .109 thick)

(.102) galvanized steel bottom bracket manufactured by C.H.I. Each bracket attached with four red 1/4" x 3/4" screws. push nut

Aluminum extrusion Vinyl weatherstrip

(.109) galvanized steel bottom bracket manufactured by C.H.I. Each bracket attached with four red 1/4" x 3/4" screws. push nut

(.06) min. wall thickness 6063-T5 extruded aluminum

2" (min) x .0485 (min) galvanized steel track

(.086) galvanized steel flag bracket fastened to wood jamb with three 5/16" x 1-5/8" wood lag screws.

Flag bracket attached to horizontal track with two 1/4" x 5/8" track bolts and nuts.

Flag bracket attached to vertical track with two 1/4" x 5/8" track bolts and nuts. Or two 1/4" x 1 1/32" rivets.

Intermediate Hinge (.058) galvanized steel fastened to section with four 1/4" x 3/4" screws.

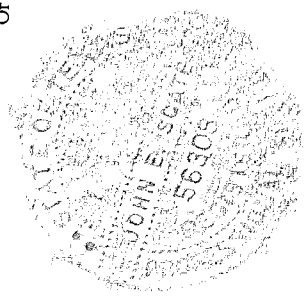
End Hinge galvanized steel fastened to section with four 1/4" x 3/4" screws each. push nut

2-3/4"

2-3/4"

(.102) galvanized steel track bracket fastened to wood jamb with one 5/16" x 1-5/8" wood lag screw per bracket.

Each track bracket attached with one 1/4" x 5/8" track bolt and nut. Or two 1/4" x 1 1/32" rivets.



*John E. Scates*  
7/17/13

John E. Scates, P.E.  
3121 Fairgate Drive  
Carrollton, Texas 75007  
TXPE 56308, F-2203

Professional Engineer's seal provided only for verification of windload construction details

Optional low head room bottom bracket

	SCALE	NIS
	DWG	3-1-2013
Models:		3290, 3295, 329X
		17.1 (psf) / - 19.2 (psf) at 13'-04" through 17.1 (psf) / - 19.2 (psf) at 14'-02"
C.H.I. Drawing:		TZ3-14-64313
		page_2_of_2