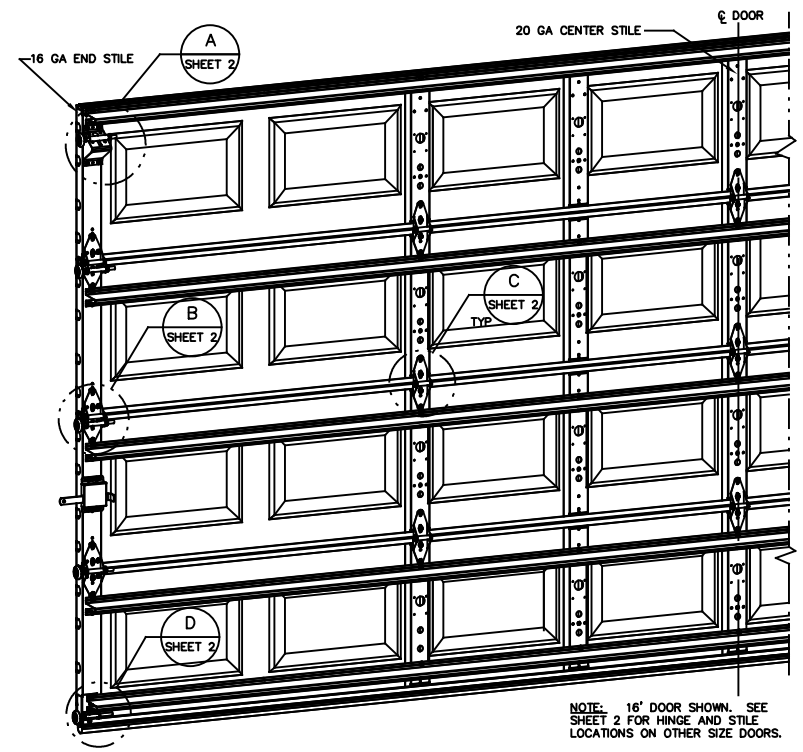
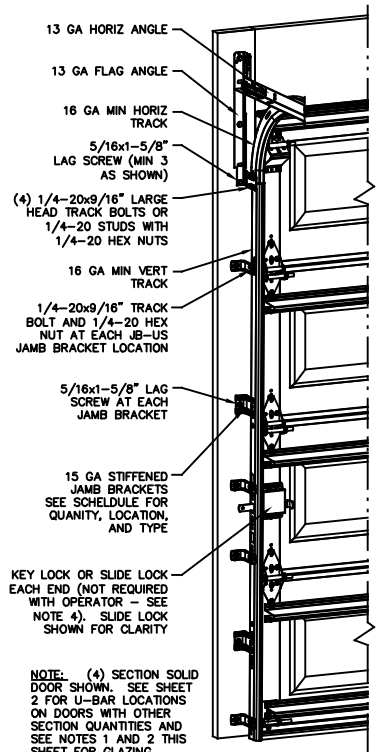


NOTES:

- NON IMPACT GLAZING OPTIONS:
 - 16 X 9.75 CLEAR OPENING INSTALLED TOP OR INTERMEDIATE SECTION.
 - 36.75 X 9.75 CLEAR OPENING INSTALLED TOP OR INTERMEDIATE SECTION.
 GLAZING SSB (0.090") MINIMUM. MAY INCLUDE DECORATIVE INSERTS NOT AVAILABLE IN MORE THAN ONE SECTION. DOES NOT SATISFY WINDBORNE-DEBRIS.
- IMPACT GLAZING OPTION:
 - 16.75 X 9.75 CLEAR OPENING
 - GLAZING 1/4" GROOVED POLYCARBONATE ALUMINUM FRAMES WITH 10 SCREWS MAY INCLUDE DECORATIVE INSERTS INSTALLED IN TOP OR INTERMEDIATE SECTION. NOT AVAILABLE IN MORE THAN ONE SECTION. SEE ASSEMBLY DETAIL ON SHEET 2.
- VINYL OR WOOD DOOR STOP NAILED A MAXIMUM OF 8" O.C. MUST OVERLAP TOP AND BOTH ENDS OF PANELS MINIMUM 7/16" TO MEET NEGATIVE PRESSURES.
- KEY LOCK, SLIDE LOCKS, OR OPERATOR REQUIRED.
- LOUVER OPTION - .032" MINIMUM LOUVERS IN MOLDED FRAMES SCREWED TOGETHER WITH A MINIMUM OF (10) #8x1" SCREWS INSTALLED IN THE BOTTOM SECTION. LOUVERS ARE NOT IMPACT RESISTANT AND DO NOT MEET THE REQUIREMENTS FOR WIND-BORNE DEBRIS REGIONS.
- SECTION STEEL TO HAVE A MINIMUM 25 GA THICKNESS.
- THE DESIGN OF THE SUPPORTING STRUCTURAL ELEMENTS SHALL BE THE RESPONSIBILITY OF THE PROFESSIONAL OF RECORD FOR THE BUILDING OR STRUCTURE AND IN ACCORDANCE WITH CURRENT BUILDING CODES FOR THE LOADS LISTED ON THIS DRAWING.
- DOOR JAMB TO BE MINIMUM 2" X 6", GRADE 2 SOUTHERN PINE. REFER TO JAMB CONNECTION SUPPLEMENT FOR ATTACHMENT TO SUPPORTING STRUCTURE.
- FOR LOW HEAD ROOM LIFT CONDITIONS, TOP BRACKET SHALL BE A 13 GA LHR 7/4 TOP BRACKET WITH A MINIMUM OF (3) 1/4-14x7/8" SELF DRILLING CRIMP-TITE SCREWS IN LIEU OF THE BRACKET SHOWN ON THIS DRAWING. U-BAR ON TOP SECTION SHALL BE INSTALLED ON TOP OF LHR TOP BRACKETS.



REVISIONS				
CR	REV	DESCRIPTION	DATE	APPROVAL
31052	A	NEW DRAWING	10/16/18	ESC
31052	B	UPDATE NOTES ADD LHR DETAIL	2/13/19	ESC
	C	ADDED IBC/IRC NOTES FOR TDI	4/13/21	TLC

SUPERIMPOSED DESIGN PRESSURE LOADS ON SUPPORTING STRUCTURE

DOOR WIDTH	DOOR HEIGHT	UNIFORM LOAD EACH JAMB (PLF)
10'-0"	ALL	+130.0/-145.0
12'-0"	ALL	+156.0/-174.0
14'-0"	ALL	+182.0/-203.0
15'-0"	ALL	+195.0/-217.5
16'-0"	ALL	+208.0/-232.0

NOTE: (4) SECTION SOLID DOOR SHOWN. SEE SHEET 2 FOR U-BAR LOCATIONS ON DOORS WITH OTHER SECTION QUANTITIES AND SEE NOTES 1 AND 2 THIS SHEET FOR GLAZING OPTIONS.

JAMB BRACKET SCHEDULE				
DOOR HEIGHT	NO. OF SECTIONS	NO. OF JAMB BRACKETS (EACH JAMB)	TRACK TYPE	LOCATION OF CENTERLINE OF JAMB BRACKETS MEASURED FROM BOTTOM OF TRACK (ALL DIMENSIONS ± 2")
8'-6"	4	6	QI	2" (JB-US), 14" (QI), 23-1/2" (JB-US), 34" (JB-US), 44" (QI), 56" (JB-US)
8'-6"	4	6	FAT	2" (JB-US), 10" (JB-US), 21-3/4" (JB-US), 39" (JB-US), 48" (JB-US), 57-1/4" (JB-US)
7'-0"	4	6	QI	2" (JB-US), 14" (QI), 25-1/2" (JB-US), 34" (JB-US), 44" (QI), 63-1/4" (JB-US)
7'-0"	4	6	FAT	2" (JB-US), 10" (JB-US), 25-3/4" (JB-US), 36" (JB-US), 52-1/2" (JB-US), 63-1/4" (JB-US)
7'-6"	5	8	QI	2" (JB-US), 14" (QI), 24-1/2" (JB-US), 32-1/2" (JB-US), 43" (QI), 49" (JB-US), 62-1/2" (QI), 72" (JB-US)
7'-6"	5	8	FAT	2" (JB-US), 10" (JB-US), 22-3/4" (JB-US), 36" (JB-US), 45" (JB-US), 54-1/4" (JB-US), 63" (JB-US), 74-1/2" (JB-US)
8'-0"	5	8	QI	2" (JB-US), 14" (QI), 23" (JB-US), 34" (JB-US), 46" (QI), 58" (JB-US), 66-1/2" (QI), 75-1/2" (JB-US)
8'-0"	5	8	FAT	2" (JB-US), 10" (JB-US), 25-3/4" (JB-US), 39" (JB-US), 48" (JB-US), 57-1/2" (JB-US), 66" (JB-US), 75-1/2" (JB-US)
> 8'-0"				SEE NOTE BELOW

NOTE: (JB-US) FOLLOWING DIMENSION DENOTES SLOTTED JAMB BRACKET ATTACHED TO TRACK WITH 1/4-20x9/16" TRACK BOLT AND NUT. (QI) FOLLOWING DIMENSION DENOTES QUICK INSTALL JAMB BRACKET INSTALLED IN BUTTERFLY SLOT. NO ADDITIONAL HARDWARE NEEDED TO ATTACH TO TRACK. ALL DOORS GREATER THAN 8' IN HEIGHT REQUIRE USE OF CONTINUOUS WALL ANGLE. SEE SUPPLEMENT TRACK CHART FOR DETAILS.

SERIES 170-177, 180-187, 1400, 1440, 1500, 1540

COMPLIES WITH THE REQUIREMENTS OF IBC/IRC 2018.

STATIC PRESSURE RATINGS	APPROVED SIZES
DESIGN PRESSURE (PSF): +26.0/-29.0	MAX WIDTH: 16'
IMPACT/CYCLIC RATED: YES	MAX HEIGHT: 14'
	MAX SECTION HEIGHT: 21'

JOHN E. SCATES, PE
2560 KING ARTHUR BLVD #124-54
LEWISVILLE, TX 75056
FL PE 51737
TX PE 56308/F2203

PROFESSIONAL ENGINEER'S SEAL PROVIDED ONLY FOR VERIFICATION OF WINDLOAD CONSTRUCTION DETAILS.

THE DRAWINGS AND ALL OTHER INFORMATION CONTAINED HEREIN ARE THE CONFIDENTIAL AND PROPRIETARY PROPERTY OF OVERHEAD DOOR CORPORATION AND ITS AFFILIATED COMPANIES. THIS DRAWING AND INFORMATION, IN WHOLE OR IN PART, MAY NOT BE COPIED IN ANY MANNER WITHOUT THE PRIOR WRITTEN CONSENT OF OVERHEAD DOOR CORPORATION. NO DISCLOSURE OF ANY OF THIS DRAWING OR INFORMATION IS INTENDED TO OPERATE AS A LICENSE OR AUTHORIZATION TO USE IT FOR ANY PURPOSE WITHOUT THE SPECIFIC WRITTEN CONSENT OF OVERHEAD DOOR CORPORATION.

	TOLERANCES UNLESS OTHERWISE SPECIFIED HOLE DIAMETER UNDER .251 +.004/- .003 .251 TO .500 +.006/- .003 OVER .500 +.008/- .003	FINISH N/A	NONE
	WHOLE NUMBERS: ± .25 .X ± .1 .XX ± .03 .XXX ± .010 ANGLES: ± .5°	UNIT OF MEASURE EACH	
REF DWG USED ON	DATE USED ON	MATERIAL NONE	NAME E. CONRAD D. KORNISH T. CLARK
		DATE 10/16/18 10/18/18 4/13/21	DRAWING TITLE SERIES 170, 180WL WS7, 16' MAX WIDE D-411548 SCALE: N.T.S. SHEET 1 OF 2

NOTES

12 GA ROLLER SLIDE ATTACHED TO BRACKET WITH 5/16-18 BOLT & NUT IN CENTER SLOT AND 1/4-20x9/16" TRACK BOLT & 1/4-20 HEX NUT THROUGH ANY TWO ALIGNING HOLES

12 GA COMMERCIAL 'A' FRAME TOP BRACKET ATTACHED WITH (4) 1/4-14x7/8" SELF DRILLING CRIMPITTE SCREWS

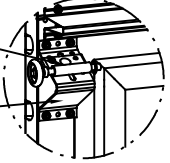
ADD (2) 1/4-14x7/8" SELF DRILLING CRIMPITTE SCREWS (INSIDE OF EACH END HINGE)

2" NYLON STORMGARD ROLLER WITH 4-1/2" STEM AND 7/16" PUSHNUT AT EACH ROLLER LOCATION. 1/4" MAX BETWEEN PUSHNUT AND BRACKET OR HINGE. OPTIONAL- 11 BALL BEARING NYLON ROLLER

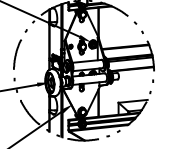
#1 HINGE IS 14 GA
#2 HINGE IS 13 GA
#3 HINGE (AND ALL ABOVE) ARE 13 GA WIDE BODY END HINGE ATTACHED WITH (4) 1/4-14x5/8" SELF TAPPING SCREWS

18 GA NARROW BODY INTERMEDIATE HINGE ATTACHED WITH (4) 1/4-14x5/8" SELF TAPPING SCREWS

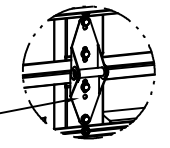
14 GA BOTTOM BRACKET ATTACHED WITH (4) 1/4-14x7/8" SELF DRILLING CRIMPITTE SCREWS (2) OF WHICH IS THROUGH STRUT AND AND (1) 1/4-14x5/8" SELF DRILLING RED SCREW



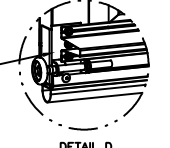
DETAIL A



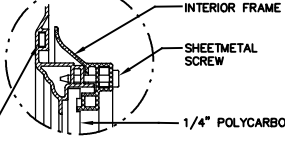
DETAIL B



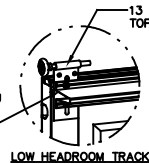
DETAIL C



DETAIL D

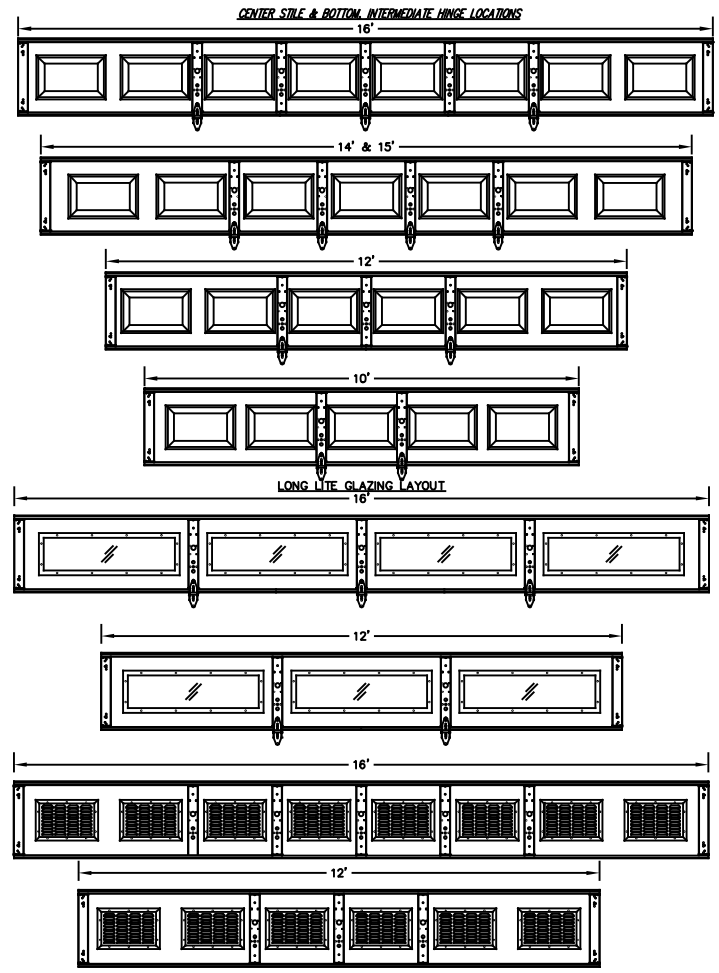


IMPACT WINDOW / ALUMINUM FRAME WITH GROOVED POLYCARBONATE
DETAIL E

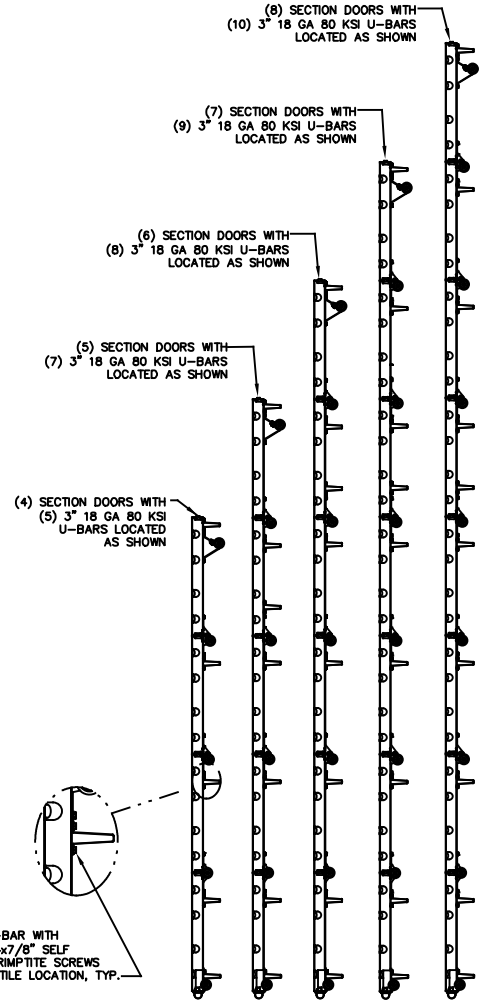


PLACE 3" U-BAR OVER LOW HEADROOM BRACKET ATTACH THRU END STILE AT EACH END WITH (2) 1/4-14x7/8" SELF DRILLING CRIMPITTE SCREWS.

LOW HEADROOM TRACK
DETAIL F



U-BAR LOCATIONS



ATTACH U-BAR WITH (2) 1/4-14x7/8" SELF DRILLING CRIMPITTE SCREWS AT EACH STILE LOCATION, TYP.

JOHN E. SCATES, PE
2560 KING ARTHUR BLVD #124-54
LEWISVILLE, TX 75056
FL PE 51737
TX PE 56308/F2203

PROFESSIONAL ENGINEER'S SEAL PROVIDED ONLY FOR VERIFICATION OF WINDLOAD CONSTRUCTION DETAILS.

THE DRAWINGS AND ALL OTHER INFORMATION CONTAINED HEREIN ARE THE CONFIDENTIAL AND PROPRIETARY PROPERTY OF OVERHEAD DOOR CORPORATION AND ITS AFFILIATED COMPANIES. THIS DRAWING AND INFORMATION, IN WHOLE OR IN PART, MAY NOT BE COPIED OR DISCLOSED TO ANYONE WITHOUT THE PRIOR WRITTEN CONSENT OF OVERHEAD DOOR CORPORATION. NO DISCLOSURE OF ANY OF THIS DRAWING OR INFORMATION IS INTENDED TO OPERATE AS A LICENSE OR AUTHORIZATION TO USE IT FOR ANY PURPOSE WITHOUT THE SPECIFIC WRITTEN CONSENT OF OVERHEAD DOOR CORPORATION.		<table border="1"> <tr> <th colspan="2">STATIC PRESSURE RATINGS</th> <th colspan="2">APPROVED SIZES</th> </tr> <tr> <td colspan="2">DESIGN PRESSURE(PSF): +26.0/-29.0</td> <td colspan="2">MAX WIDTH: 16'</td> </tr> <tr> <td colspan="2">IMPACT/CYCLIC RATED: YES</td> <td colspan="2">MAX HEIGHT: 14'</td> </tr> <tr> <td colspan="2"></td> <td colspan="2">MAX SECTION HEIGHT: 21'</td> </tr> </table>		STATIC PRESSURE RATINGS		APPROVED SIZES		DESIGN PRESSURE(PSF): +26.0/-29.0		MAX WIDTH: 16'		IMPACT/CYCLIC RATED: YES		MAX HEIGHT: 14'				MAX SECTION HEIGHT: 21'																																	
STATIC PRESSURE RATINGS		APPROVED SIZES																																																	
DESIGN PRESSURE(PSF): +26.0/-29.0		MAX WIDTH: 16'																																																	
IMPACT/CYCLIC RATED: YES		MAX HEIGHT: 14'																																																	
		MAX SECTION HEIGHT: 21'																																																	
<table border="1"> <tr> <th colspan="2">TOLERANCES UNLESS OTHERWISE SPECIFIED</th> <th colspan="2">FINISH</th> </tr> <tr> <td>HOLE DIAMETER</td> <td>WHOLE NUMBERS: ± .25</td> <td colspan="2">N/A</td> </tr> <tr> <td>UNDER .251 +.004/- .003</td> <td>± .1</td> <td colspan="2">NONE</td> </tr> <tr> <td>.251 TO .500 +.006/- .003</td> <td>± .03</td> <td colspan="2"></td> </tr> <tr> <td>OVER .500 +.008/- .003</td> <td>± .010</td> <td colspan="2"></td> </tr> <tr> <td>FRACTIONS</td> <td>± .010</td> <td colspan="2"></td> </tr> <tr> <td>± 1/16</td> <td>± .5°</td> <td colspan="2"></td> </tr> </table>	TOLERANCES UNLESS OTHERWISE SPECIFIED		FINISH		HOLE DIAMETER	WHOLE NUMBERS: ± .25	N/A		UNDER .251 +.004/- .003	± .1	NONE		.251 TO .500 +.006/- .003	± .03			OVER .500 +.008/- .003	± .010			FRACTIONS	± .010			± 1/16	± .5°			<table border="1"> <tr> <td>UNIT OF MEASURE</td> <td>EACH</td> </tr> </table>	UNIT OF MEASURE	EACH	<table border="1"> <tr> <td>DATE</td> <td>10/16/18</td> </tr> <tr> <td>NAME</td> <td>E. CONRAD</td> </tr> <tr> <td>CHECKED BY</td> <td>D. KORNISH</td> </tr> <tr> <td>APPROVED BY</td> <td>T. CLARK</td> </tr> </table>	DATE	10/16/18	NAME	E. CONRAD	CHECKED BY	D. KORNISH	APPROVED BY	T. CLARK	<table border="1"> <tr> <td>DRAWING TITLE</td> <td>SERIES 170, 180WL</td> </tr> <tr> <td></td> <td>WS7, 16' MAX WIDE</td> </tr> <tr> <td>DESIGN NUMBER</td> <td>D-411548</td> </tr> <tr> <td>SCALE</td> <td>N.T.S.</td> </tr> <tr> <td>SHEET</td> <td>2 OF 2</td> </tr> </table>	DRAWING TITLE	SERIES 170, 180WL		WS7, 16' MAX WIDE	DESIGN NUMBER	D-411548	SCALE	N.T.S.	SHEET	2 OF 2
TOLERANCES UNLESS OTHERWISE SPECIFIED		FINISH																																																	
HOLE DIAMETER	WHOLE NUMBERS: ± .25	N/A																																																	
UNDER .251 +.004/- .003	± .1	NONE																																																	
.251 TO .500 +.006/- .003	± .03																																																		
OVER .500 +.008/- .003	± .010																																																		
FRACTIONS	± .010																																																		
± 1/16	± .5°																																																		
UNIT OF MEASURE	EACH																																																		
DATE	10/16/18																																																		
NAME	E. CONRAD																																																		
CHECKED BY	D. KORNISH																																																		
APPROVED BY	T. CLARK																																																		
DRAWING TITLE	SERIES 170, 180WL																																																		
	WS7, 16' MAX WIDE																																																		
DESIGN NUMBER	D-411548																																																		
SCALE	N.T.S.																																																		
SHEET	2 OF 2																																																		