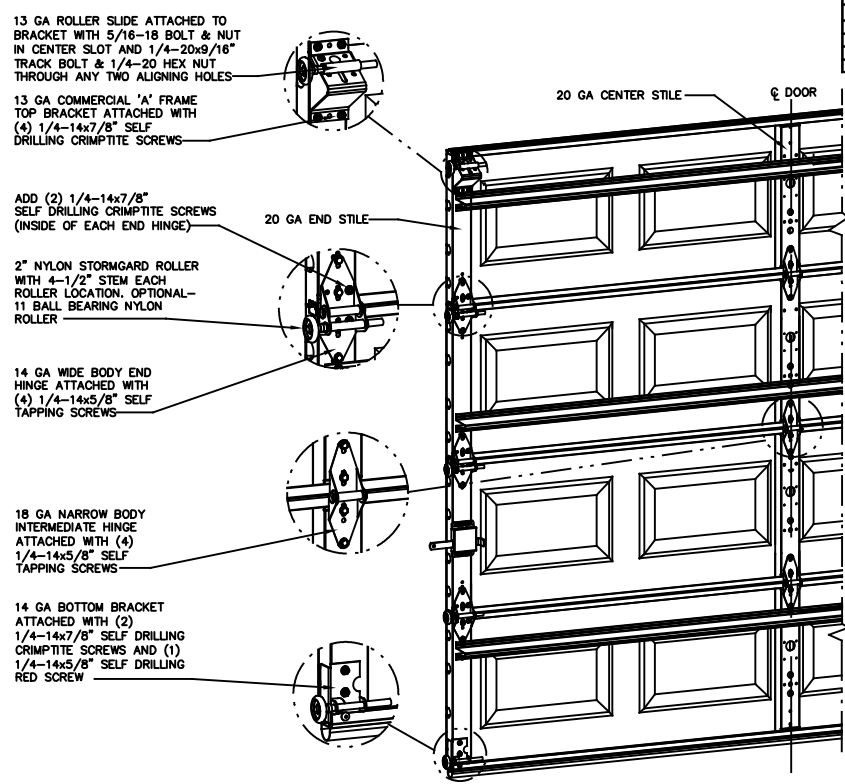
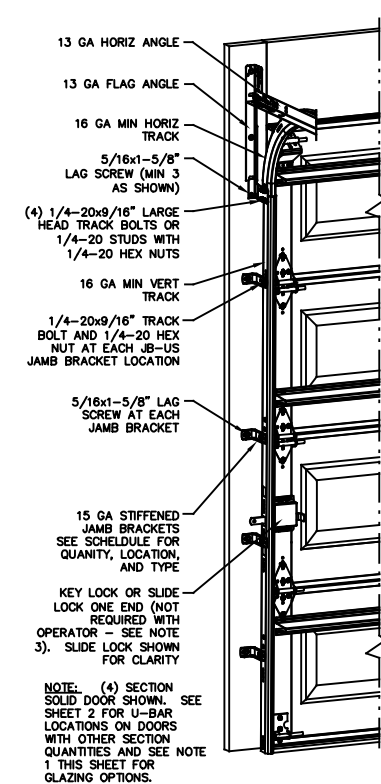


- NOTES:**
- NON IMPACT GLAZING OPTIONS:  
16 X 9.75 CLEAR OPENING  
36.75 X 9.75 CLEAR OPENING  
GLAZING SSB (0.090") MINIMUM.  
MAY INCLUDE DECORATIVE INSERTS  
INSTALLED IN TOP OR INTERMEDIATE SECTION.  
NOT AVAILABLE IN MORE THAN ONE SECTION.  
DOES NOT SATISFY WINDBORNE-DEBRIS.
  - IMPACT GLAZING NOT AVAILABLE.
  - VINYL OR WOOD DOOR STOP NAILED A  
MAXIMUM OF 6" O.C. MUST OVERLAP TOP AND  
BOTH ENDS OF PANELS MINIMUM 7/16" TO  
MEET NEGATIVE PRESSURES.
  - KEY LOCK, SLIDE LOCK, OR OPERATOR  
REQUIRED.
  - LOUVER OPTION - .032" MINIMUM LOUVERS  
IN MOLDED FRAMES SCREWED TOGETHER WITH A  
MINIMUM OF (10) #8x1" SCREWS INSTALLED IN  
THE BOTTOM SECTION. LOUVERS ARE NOT  
IMPACT RESISTANT AND DO NOT MEET THE  
REQUIREMENTS FOR WIND-BORNE DEBRIS  
REGIONS.
  - SECTION STEEL TO HAVE A MINIMUM 25 GA  
THICKNESS.
  - THE DESIGN OF THE SUPPORTING  
STRUCTURAL ELEMENTS SHALL BE THE  
RESPONSIBILITY OF THE PROFESSIONAL OF  
RECORD FOR THE BUILDING OR STRUCTURE AND  
IN ACCORDANCE WITH CURRENT BUILDING CODES  
FOR THE LOADS LISTED ON THIS DRAWING.
  - DOOR JAMB TO BE GRADE 2 SOUTHERN  
PINE. REFER TO JAMB CONNECTION  
SUPPLEMENT FOR ATTACHMENT TO SUPPORTING  
STRUCTURE.
  - FOR LOW HEAD ROOM LIFT CONDITIONS, TOP  
BRACKET SHALL BE A 13 GA LHR 7/4 TOP  
BRACKET WITH A MINIMUM OF (3) 1/4-14x7/8"  
SELF DRILLING CRIMPITITE SCREWS IN LIEU OF  
THE BRACKET SHOWN ON THIS DRAWING.



REVISIONS				
CR	REV	DESCRIPTION	DATE	APPROVAL
31052	A	NEW DRAWING	10/12/18	ESC
31052	B	UPDATE NOTES ADD LHR DETAIL	2/13/19	ESC
	C	ADDED IRC/IBC NOTES FOR TD	4/13/21	TLC

SUPERIMPOSED DESIGN PRESSURE LOADS ON SUPPORTING STRUCTURE		
DOOR WIDTH	DOOR HEIGHT	UNIFORM LOAD EACH JAMB (PLF)
8'-0"	ALL	+91.6/-105.2
9'-0"	ALL	+103.1/-118.4

JAMB BRACKET SCHEDULE				
DOOR HEIGHT	NO. OF SECTIONS	NO. OF JAMB BRACKETS (EACH JAMB)	TRACK TYPE	LOCATION OF CENTERLINE OF JAMB BRACKETS MEASURED FROM BOTTOM OF TRACK (ALL DIMENSIONS ± 2")
6'-6"	4	4	FAT 10"	(JB-US), 25-3/4" (JB-US), 39" (JB-US), 57-1/4" (JB-US)
7'-0"	4	4	FAT 10"	(JB-US), 28-3/4" (JB-US), 42" (JB-US), 63-1/4" (JB-US)
7'-6"	5	5	FAT 10"	(JB-US), 26-3/4" (JB-US), 45" (JB-US), 63" (JB-US), 74-1/2" (JB-US)
8'-0"	5	5	FAT 10"	(JB-US), 29-3/4" (JB-US), 48" (JB-US), 57-1/2" (JB-US), 77-1/2" (JB-US)
> 8'-0"				SEE NOTE BELOW

NOTE: (FAT AND NGR) FOLLOWING DIMENSION DENOTES SLOTTED JAMB BRACKET ATTACHED TO TRACK WITH 1/4-20x9/16" TRACK BOLT AND NUT. ALL DOORS GREATER THAN 8' IN HEIGHT REQUIRE USE OF CONTINUOUS WALL ANGLE. SEE SUPPLEMENT TRACK CHART FOR DETAILS.

## SERIES 170-177, 180-187, 1400, 1440, 1500, 1540

COMPLIES WITH THE REQUIREMENTS OF IBC/IRC 2018.

THE DRAWINGS AND ALL OTHER INFORMATION CONTAINED HEREIN ARE THE CONFIDENTIAL AND PROPRIETARY PROPERTY OF OVERHEAD DOOR CORPORATION AND ITS AFFILIATED COMPANIES. THIS DRAWING AND INFORMATION, IN WHOLE OR IN PART, MAY NOT BE COPIED IN ANY MANNER OR DISCLOSED TO ANYONE WITHOUT THE PRIOR WRITTEN CONSENT OF OVERHEAD DOOR CORPORATION. NO DISCLOSURE OF ANY OF THIS DRAWING OR INFORMATION IS INTENDED TO OPERATE AS A LICENSE OR AUTHORIZATION TO USE IT FOR ANY PURPOSE WITHOUT THE SPECIFIC WRITTEN CONSENT OF OVERHEAD DOOR CORPORATION.

STATIC PRESSURE RATINGS	APPROVED SIZES
DESIGN PRESSURE (PSF): +22.9/-26.3	MAX WIDTH: 9'
	MAX HEIGHT: 14'
IMPACT/CYCLIC RATED: NO	MAX SECTION HEIGHT: 21'

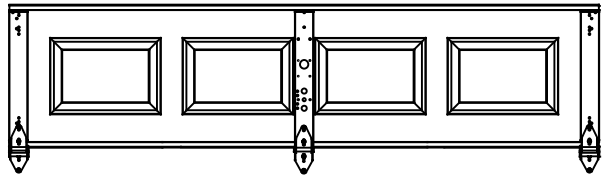
JOHN E. SCATES, PE  
2560 KING ARTHUR BLVD #124-54  
LEWISVILLE, TX 75056  
FL PE 51737  
TX PE 56308/F2203

PROFESSIONAL ENGINEER'S SEAL PROVIDED ONLY FOR VERIFICATION OF WINDLOAD CONSTRUCTION DETAILS.

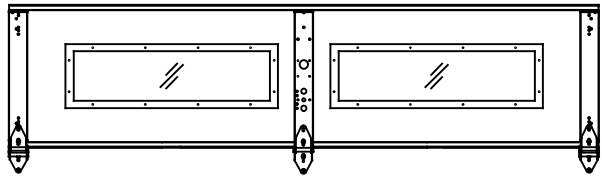
REF DWG	USED ON	HOLE DIAMETER	WHOLE NUMBERS:	FINISH	UNIT OF MEASURE	INTERPOL:	NAME	DATE	DRAWING TITLE
		UNDER .251 +.004/- .003	± .25	N/A	EACH		E. CONRAD	10/12/18	SERIES 170, 180WL
		.251 TO .500 +.006/- .003	± .1				D. KORNISH	10/12/18	WS3, 9' MAX WIDE
		OVER .500 +.008/- .003	± .03				T. CLARK	4/13/21	D-411536
		FRACTIONS	± .010						SCALE: N.T.S.
		ANGLES:	± .5'						SHEET 1 OF 2

NOTES:

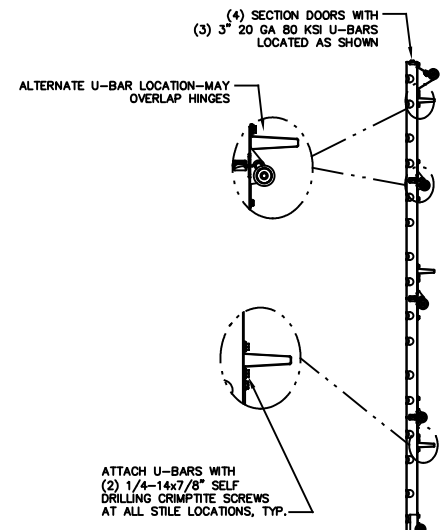
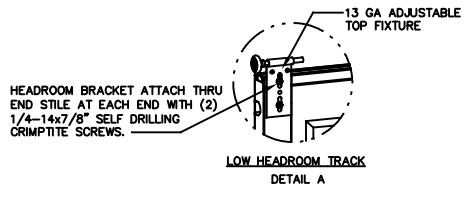
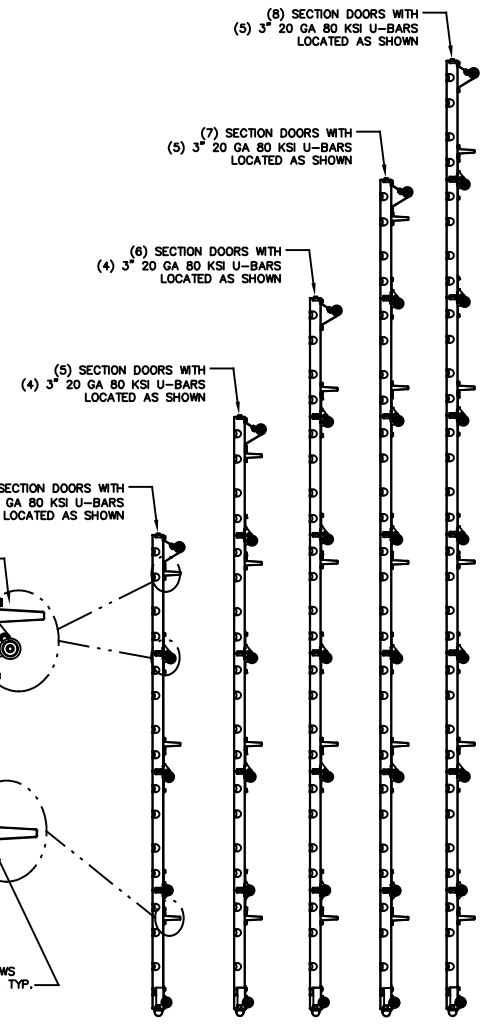
CENTER STILE & INTERMEDIATE HINGE LOCATIONS



LONG LITE GLAZING LAYOUT



U-BAR LOCATIONS



STATIC PRESSURE RATINGS	APPROVED SIZES
DESIGN PRESSURE(PSF): +22.9/-26.3	MAX WIDTH: 9'
	MAX HEIGHT: 14'
IMPACT/CYCLIC RATED: NO	MAX SECTION HEIGHT: 21'

THE DRAWINGS AND ALL OTHER INFORMATION CONTAINED HEREIN ARE THE CONFIDENTIAL AND PROPRIETARY PROPERTY OF OVERHEAD DOOR CORPORATION AND ITS AFFILIATED COMPANIES. THIS DRAWING AND INFORMATION, IN WHOLE OR IN PART, MAY NOT BE COPIED IN ANY MANNER OR DISCLOSED TO ANYONE WITHOUT THE PRIOR WRITTEN CONSENT OF OVERHEAD DOOR CORPORATION. NO DISCLOSURE OF ANY OF THIS DRAWING OR INFORMATION IS INTENDED TO OPERATE AS A LICENSE OR AUTHORIZATION TO USE IT FOR ANY PURPOSE WITHOUT THE SPECIFIC WRITTEN CONSENT OF OVERHEAD DOOR CORPORATION.													
REF DWG	USED ON	HOLE DIMENSIONS UNLESS OTHERWISE SPECIFIED		FINISH N/A	UNIT OF MEASURE EACH	MATERIAL NONE	APPROVED BY T. CLARK	DATE 4/13/21	DRAWING TITLE SERIES 170, 180WL WS3, 9' MAX WIDE				
		<table border="1"> <tr> <th>HOLE DIAMETER</th> <th>WHOLE NUMBERS</th> </tr> <tr> <td>UNDER .251 +.004/-0.003</td> <td>± .25</td> </tr> <tr> <td>.251 TO .500 +.006/-0.003</td> <td>± .1</td> </tr> <tr> <td>OVER .500 +.008/-0.003</td> <td>± .03</td> </tr> </table>	HOLE DIAMETER							WHOLE NUMBERS	UNDER .251 +.004/-0.003	± .25	.251 TO .500 +.006/-0.003
HOLE DIAMETER	WHOLE NUMBERS												
UNDER .251 +.004/-0.003	± .25												
.251 TO .500 +.006/-0.003	± .1												
OVER .500 +.008/-0.003	± .03												
FRACTIONS	ANGLES												
± 1/16	± .5°												

JOHN E. SCATES, PE  
2560 KING ARTHUR BLVD #124-54  
LEWISVILLE, TX 75056  
FL PE 51737  
TX PE 56308/F2203

PROFESSIONAL ENGINEER'S SEAL PROVIDED ONLY FOR VERIFICATION OF WINDLOAD CONSTRUCTION DETAILS.