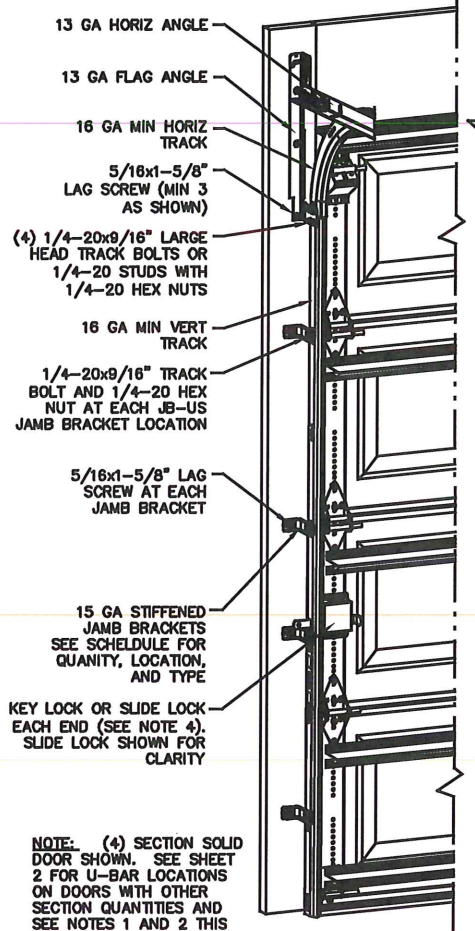


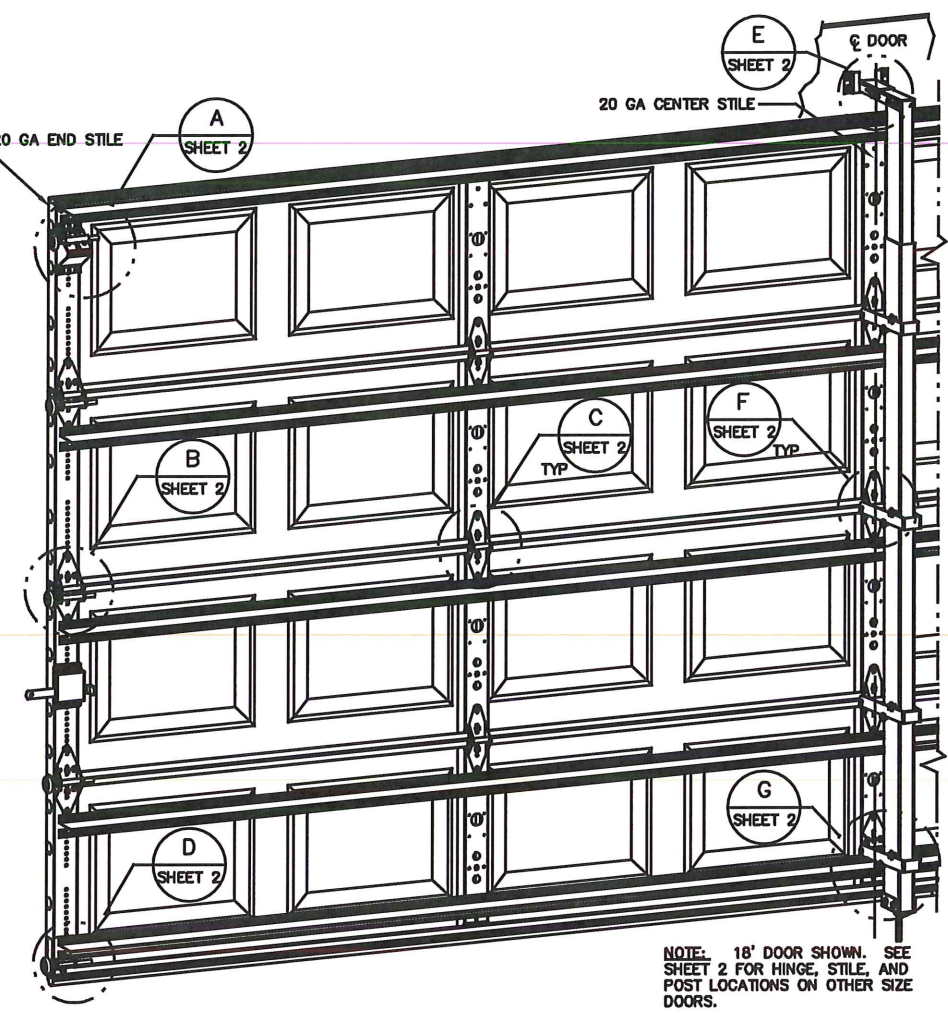
NOTES

- NOTES:**
- IMPACT RESISTANT GLAZING OPTION-- IMPACT RESISTANT GLAZING SYSTEM MAY BE INSTALLED IN TOP OR INTERMEDIATE SECTION (WITH OR WITHOUT DECORATIVE INSERTS). GLAZING SHALL BE 1/4" POLYCARBONATE. MAXIMUM GLAZING DIMENSIONS SHALL BE 12.41" x 18.53" CUTOUT, FASTENED WITH #8 X 1" SMS: 3X ALONG THE HORIZONTAL AND 2X ALONG THE VERTICAL. SEE DETAIL J ON SHEET 2 FOR ASSEMBLY DETAILS.
 - NON-IMPACT RESISTANT GLAZING OPTION -- .090" MINIMUM SSB GLAZING IN MOLDED FRAMES SCREWED TOGETHER WITH A MINIMUM OF (10) #8x1" SCREWS INSTALLED IN TOP OR INTERMEDIATE SECTION (WITH OR WITHOUT DECORATIVE INSERTS) MEETS UNIFORM STATIC WIND PRESSURES SHOWN ON THIS DRAWING. GLAZING SHALL HAVE A MAXIMUM HEIGHT OF 10.89" AND A MAXIMUM LENGTH OF 16.94". GLAZING IS NOT IMPACT RESISTANT AND DOES NOT MEET THE REQUIREMENTS FOR WIND-BORNE DEBRIS REGIONS.
 - VINYL OR WOOD DOOR STOP NAILED A MAXIMUM OF 6" O.C. MUST OVERLAP TOP AND BOTH ENDS OF PANELS MINIMUM 7/16" TO MEET NEGATIVE PRESSURES.
 - KEY LOCK OR SLIDE LOCKS REQUIRED.
 - LOUVER OPTION -- .040" MINIMUM LOUVERS IN MOLDED FRAMES SCREWED TOGETHER WITH A MINIMUM OF (10) #8x1" SCREWS INSTALLED IN THE BOTTOM SECTION. LOUVERS ARE NOT IMPACT RESISTANT AND DO NOT MEET THE REQUIREMENTS FOR WIND-BORNE DEBRIS REGIONS.
 - SECTION STEEL TO HAVE A MINIMUM 26 GA THICKNESS.
 - THE DESIGN OF THE SUPPORTING STRUCTURAL ELEMENTS SHALL BE THE RESPONSIBILITY OF THE PROFESSIONAL OF RECORD FOR THE BUILDING OR STRUCTURE AND IN ACCORDANCE WITH CURRENT BUILDING CODES FOR THE LOADS LISTED ON THIS DRAWING.
 - DOOR JAMB TO BE MINIMUM 2x4 STRUCTURAL GRADE LUMBER. REFER TO JAMB CONNECTION SUPPLEMENT FOR ATTACHMENT TO SUPPORTING STRUCTURE.
 - FOR LOW HEAD ROOM LIFT CONDITIONS, TOP BRACKET SHALL BE A 13 GA LHR 7/4 TOP BRACKET WITH A MINIMUM OF (3) 1/4-14x7/8" SELF DRILLING CRIMPITE SCREWS IN LIEU OF THE BRACKET SHOWN ON THIS DRAWING. U-BAR ON TOP SECTION SHALL BE INSTALLED ON TOP OF LHR TOP BRACKETS.
 - IN LIEU OF THE SHORT PANEL EMBOSMENT SHOWN, LONG PANEL EMBOSMENT, V12 PANEL EMBOSMENT, OR NO EMBOSMENT MAY BE USED

"FAT" TRACK TYPE SHOWN BELOW



NOTE: (4) SECTION SOLID DOOR SHOWN. SEE SHEET 2 FOR U-BAR LOCATIONS ON DOORS WITH OTHER SECTION QUANTITIES AND SEE NOTES 1 AND 2 THIS SHEET FOR GLAZING OPTIONS.

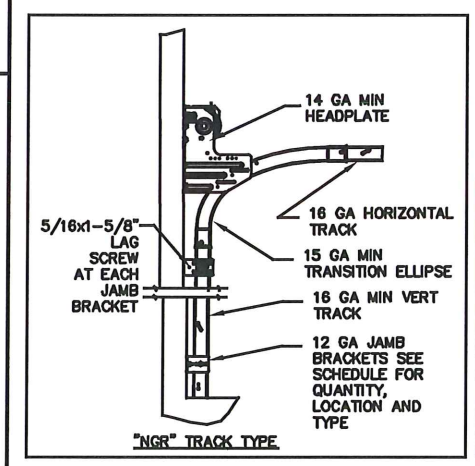


NOTE: 18" DOOR SHOWN. SEE SHEET 2 FOR HINGE, STILE, AND POST LOCATIONS ON OTHER SIZE DOORS.

REVISIONS				
OR	REV	DESCRIPTION	DATE	APPROVAL
30704	B	REV PER ER	11/13/12	GRT
	C	REV TITLE BLOCK	10/2/2017	ESC
32177	D	REV PER PCR	10/24/19	JQ
	F	ADDED IBC/IRC NOTES FOR TL	4/12/21	TLG

COMPLIES WITH THE REQUIREMENTS OF IBC/IRC 2018.

STATIC PRESSURE RATINGS	APPROVED SIZES
DESIGN PRESSURE(PSF): 34.4/-38.3	MAX WIDTH: 18'
IMPACT/CYCLIC RATED: NO	MAX HEIGHT: 8'
	MAX SECTION HEIGHT: 21'



SUPERIMPOSED DESIGN PRESSURE LOADS ON SUPPORTING STRUCTURE

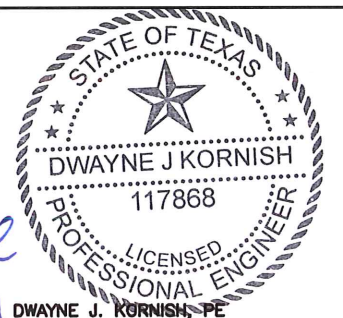
MAX DOOR WIDTH	MAX DOOR HEIGHT	UNIFORM LOAD EACH JAMB (PLF)	POINT LOAD AT HEADER AND SLAB AT EACH POST LOCATION (LBS)
15'-0"	7'-0"	+147.7/-164.4	+933.8/-1039.4
	8'-0"	+147.7/-164.4	+1060.9/-1181.2
16'-0"	7'-0"	+135.0/-150.3	+1028.4/-1145.0
	8'-0"	+135.0/-150.3	+1168.6/-1301.1
17'-0"	7'-0"	+138.7/-154.4	+1127.3/-1255.1
	8'-0"	+138.7/-154.4	+1281.0/-1426.2
18'-0"	7'-0"	+142.7/-158.8	+1224.2/-1383.0
	8'-0"	+142.7/-158.8	+1391.1/-1548.8

JAMB BRACKET SCHEDULE			
DOOR HEIGHT	NO. OF SECTIONS	NO. OF JAMB BRACKETS (EACH JAMB)	TRACK TYPE
6'-6"	4	4	FAT 10" (JB-US), 25-3/4" (JB-US), 39" (JB-US), 57-1/4" (JB-US) NGR 5" (STD), 22-1/2" (STD), 35-3/4" (STD), 67" (STD)
7'-0"	4	4	FAT 10" (JB-US), 28-3/4" (JB-US), 42" (JB-US), 63-1/4" (JB-US) NGR 5" (STD), 22-1/2" (STD), 35-3/4" (STD), 67" (STD)
7'-6"	5	5	FAT 10" (JB-US), 28-3/4" (JB-US), 45" (JB-US), 63" (JB-US), 74-1/2" (JB-US) NGR 5" (STD), 22-1/2" (STD), 35-3/4" (STD), 67" (STD), 80" (STD)
8'-0"	5	5	FAT 10" (JB-US), 28-3/4" (JB-US), 48" (JB-US), 57-1/2" (JB-US), 77-1/2" (JB-US) NGR 5" (STD), 22-1/2" (STD), 35-3/4" (STD), 67" (STD), 80" (STD)
> 8'-0"			SEE NOTE BELOW

NOTE: (FAT AND NGR) FOLLOWING DIMENSION DENOTES SLOTTED JAMB BRACKET ATTACHED TO TRACK WITH 1/4-20x9/16" TRACK BOLT AND NUT.

SERIES 170-177, 180-187, 1400, 1440, 1540

THE DRAWINGS AND ALL OTHER INFORMATION CONTAINED HEREIN ARE THE CONFIDENTIAL AND PROPRIETARY PROPERTY OF OVERHEAD DOOR CORPORATION AND ITS AFFILIATED COMPANIES. THIS DRAWING AND INFORMATION, IN WHOLE OR IN PART, MAY NOT BE COPIED IN ANY MANNER OR DISCLOSED TO ANYONE WITHOUT THE PRIOR WRITTEN CONSENT OF OVERHEAD DOOR CORPORATION. NO DISCLOSURE OF ANY OF THIS DRAWING OR INFORMATION IS INTENDED TO OPERATE AS A LICENSE OR AUTHORIZATION TO USE IT FOR ANY PURPOSE WITHOUT THE SPECIFIC WRITTEN CONSENT OF OVERHEAD DOOR CORPORATION.			
	FINISH: N/A UNIT OF MEASURE: EACH	DATE: 10/15/10 DRAWN BY: G. TAYLOR CHECKED BY: M. SAWICKI APPROVED BY: T. CLARK	DRAWING NO.: SERIES 170, 180WL WS7, 18' MAX WIDE, POST D-411053 SHEET 1 OF 2



Edke
4/11/2021

DWAYNE J. KORNISH - PE
4576 COUNTY ROAD 160
MOUNT HOPE, OHIO
FL PE 77945
TX PE 117868

PROFESSIONAL ENGINEER'S SEAL PROVIDED ONLY FOR VERIFICATION OF WIND LOAD CONSTRUCTION DETAILS.

8 | 7 | 6 | 5 | 4 | 3 | 2 | 1

NOTES

13 GA ROLLER SLIDE ATTACHED TO BRACKET WITH 5/16-18 BOLT & NUT IN CENTER SLOT AND 1/4-20x9/16" TRACK BOLT & 1/4-20 HEX NUT THROUGH ANY TWO ALIGNING HOLES

13 GA COMMERCIAL 'A' FRAME TOP BRACKET ATTACHED WITH (4) 1/4-14x7/8" SELF DRILLING CRIMPITTE SCREWS

ADD (2) 1/4-14x7/8" SELF DRILLING CRIMPITTE SCREWS (INSIDE OF EACH END HINGE)

2" NYLON STORMGARD ROLLER WITH 4-1/2" STEM

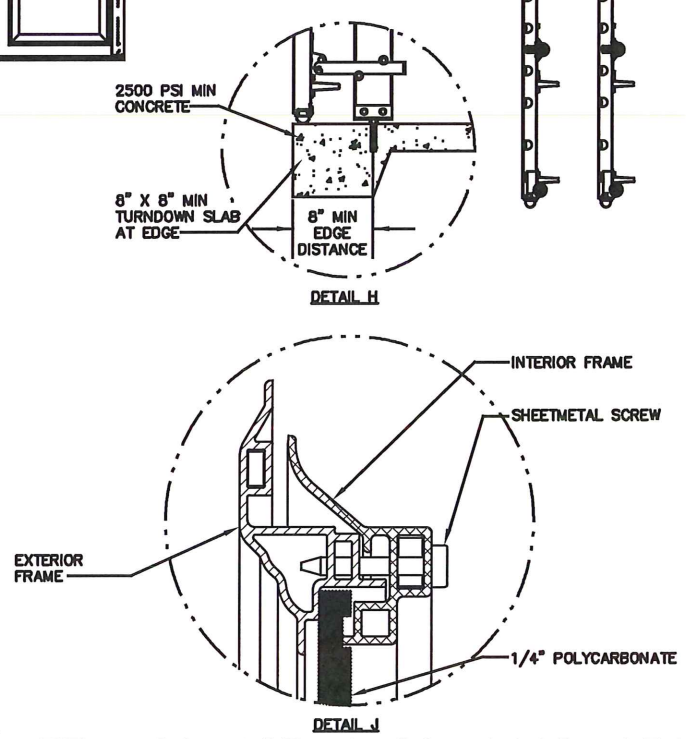
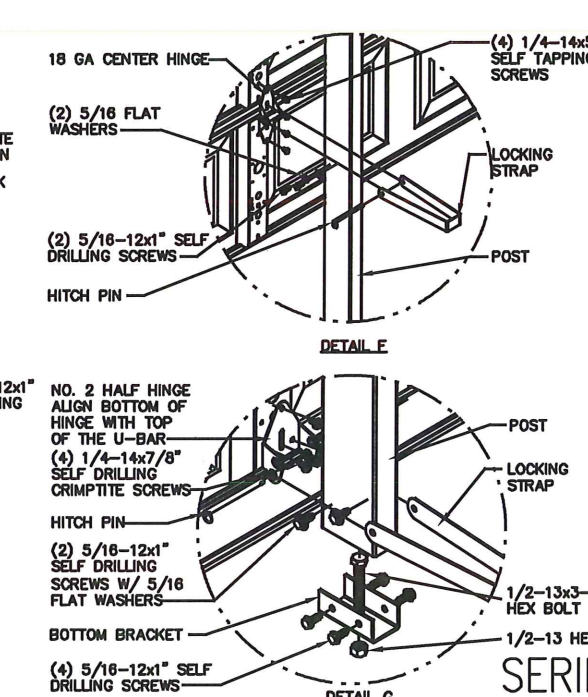
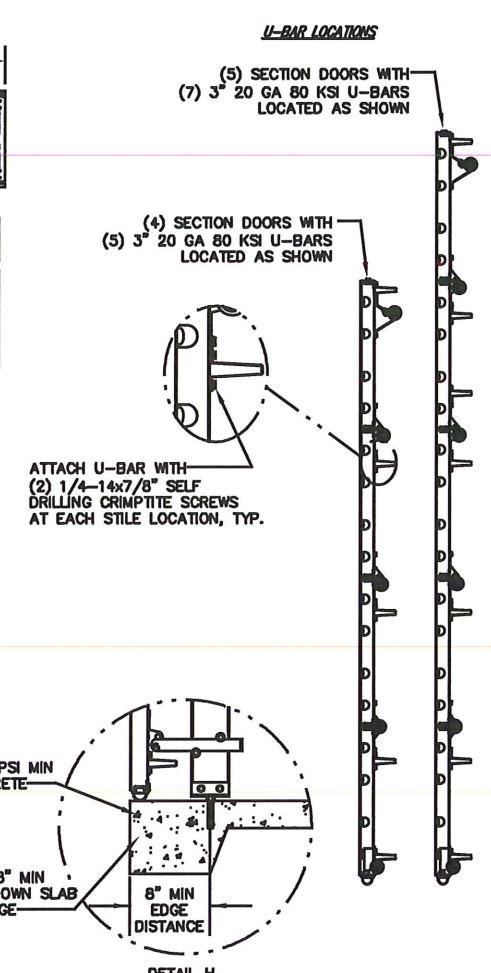
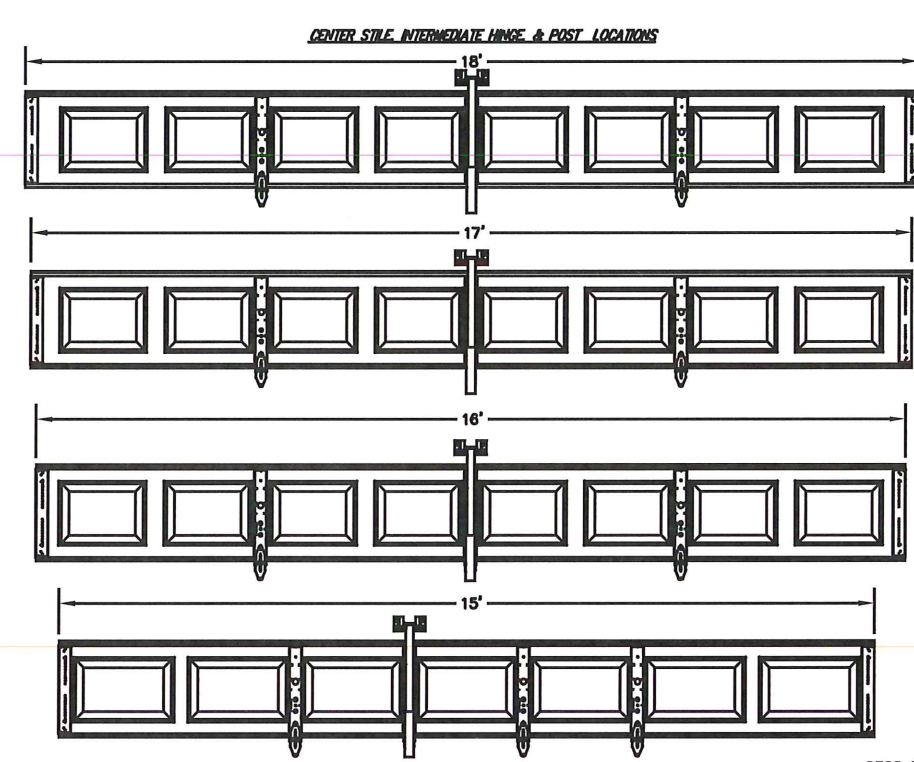
14 GA WIDE BODY END HINGE ATTACHED WITH (4) 1/4-14x5/8" SELF TAPPING SCREWS

18 GA NARROW BODY INTERMEDIATE HINGE ATTACHED WITH (4) 1/4-14x5/8" SELF TAPPING SCREWS

14 GA BOTTOM BRACKET ATTACHED WITH (2) 1/4-14x7/8" SELF DRILLING CRIMPITTE SCREWS THROUGH STRUT AND BOTTOM BRACKET AND (1) 1/4-14x5/8" SELF DRILLING TAMPER RESISTANT SCREW

HEADER
HEADER LOCK BRACKET
TOP PLATE EXTENSION
TOP LOCK PLATE

(4) 5/16x1-5/8" LAG SCREWS
5/16-18x2-1/2" HEX BOLT & NUT
INNER POST
(4) 5/16-12x1" SELF DRILLING SCREWS



STATE OF TEXAS
DWAYNE J. KORNISH
117868
LICENSED PROFESSIONAL ENGINEER

DWAYNE J. KORNISH, PE
4576 COUNTY ROAD 160
MOUNT HOPE, OHIO
FL PE 77945
TX PE 117868

PROFESSIONAL ENGINEER'S SEAL PROVIDED ONLY FOR VERIFICATION OF WIND LOAD CONSTRUCTION DETAILS.

SERIES 170-177, 180-187, 1400, 1440, 1540

THE DRAWINGS AND ALL OTHER INFORMATION CONTAINED HEREIN ARE THE CONFIDENTIAL AND PROPRIETARY PROPERTY OF OVERHEAD DOOR CORPORATION AND ITS AFFILIATED COMPANIES. THIS DRAWING AND INFORMATION, IN WHOLE OR IN PART, MAY NOT BE COPIED IN ANY MANNER OR DISCLOSED TO ANYONE WITHOUT THE PRIOR WRITTEN CONSENT OF OVERHEAD DOOR CORPORATION. NO DISCLOSURE OF ANY OF THIS DRAWING OR INFORMATION IS INTENDED TO OPERATE AS A LICENSE OR AUTHORIZATION TO USE IT FOR ANY PURPOSE WITHOUT THE SPECIFIC WRITTEN CONSENT OF OVERHEAD DOOR CORPORATION.

REF DWG	USED ON	FINISH	N/A	UNIT OF MEASURE	EACH
HOLE DIAMETER UNDER .251 +.004/-0.003 .251 TO .500 +.008/-0.003 OVER .500 +.008/-0.003 FRACTIONS ± 1/16		WHOLE NUMBERS: ± .25 .X ± .1 .XX ± .03 .XXX ± .010 ANGLES: ± .5°	NONE	NONE	NONE

DATE	10/15/10	BY	G. TAYLOR
DATE	10/25/10	BY	M. SAWICKI
DATE	4/12/21	BY	T. CLARK

PROJECT	SERIES 170, 180WL
DESCRIPTION	WS7, 18' MAX WIDE, POST
DRAWING NUMBER	D-411053
SCALE	N.T.S.
SHEET	2 OF 2

8 | 7 | 6 | 5 | 4 | 3 | 2 | 1