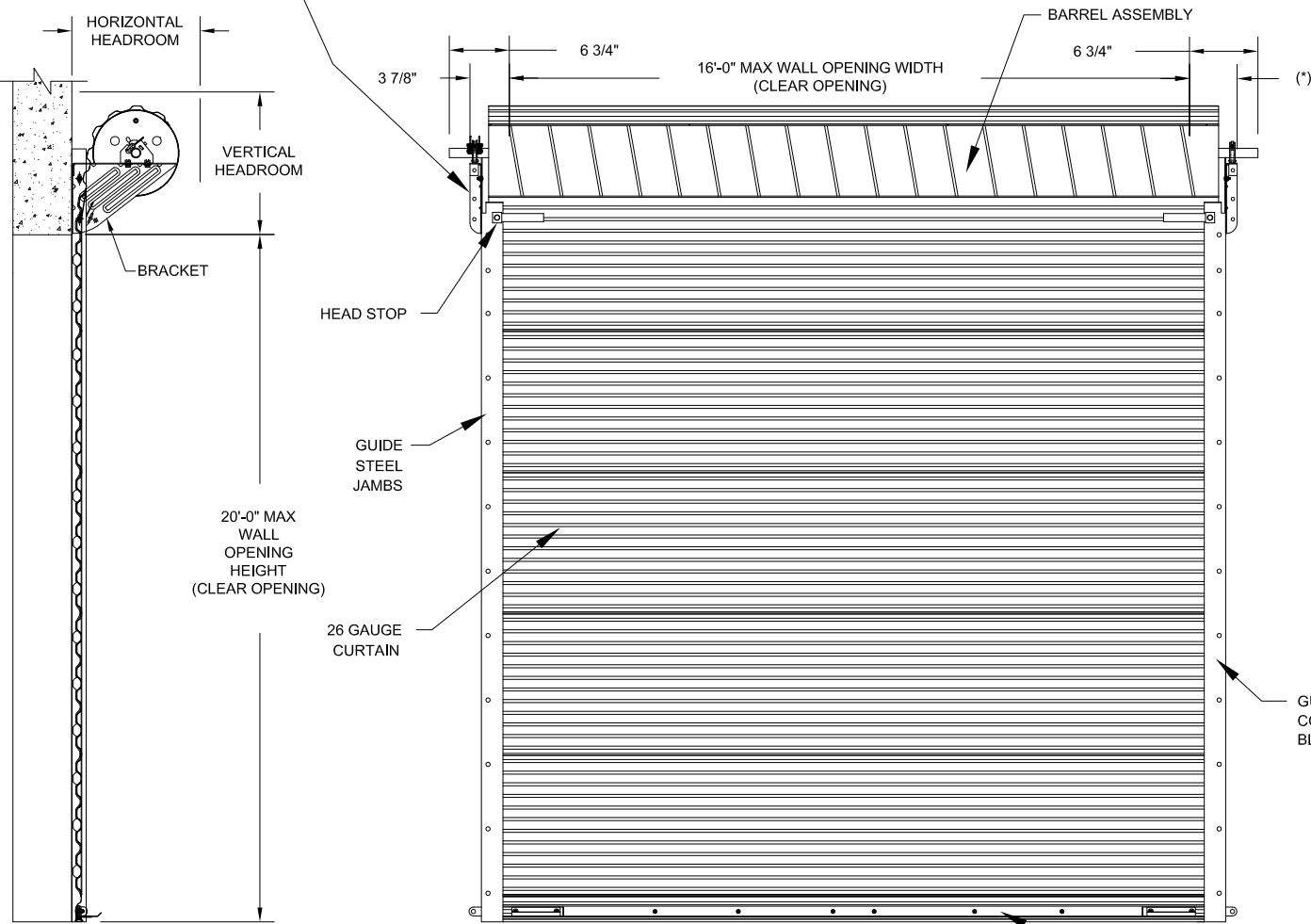


BRACKET ATTACHMENT
 CONCRETE/FILLED BLOCK: DEWALT SCREW-BOLT+, 3/8 X 1 3/4" LONG
 STEEL: HEX BOLT, GR 5, 3/8-16 X 1 1/4" LONG OR 3/8-16 X 1" HWH
 TYPE 23 THREAD-CUTTING SCREW

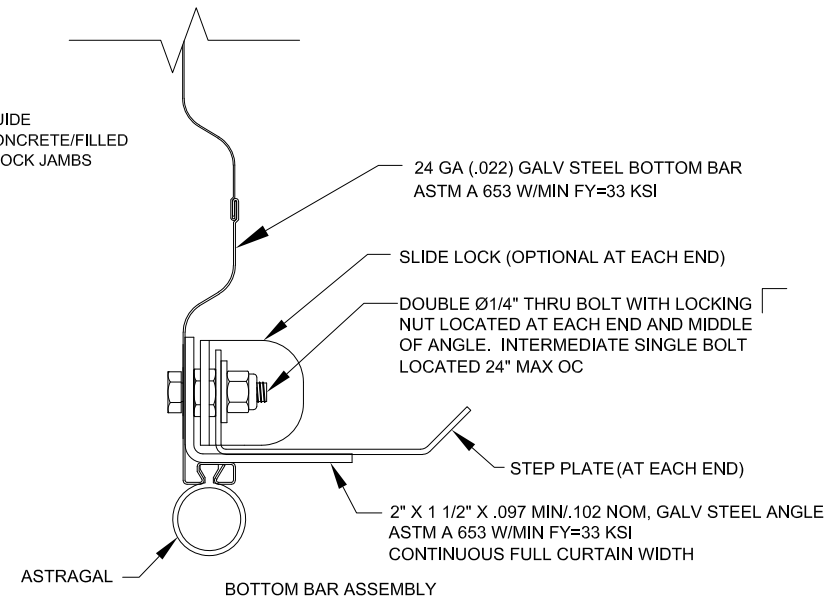
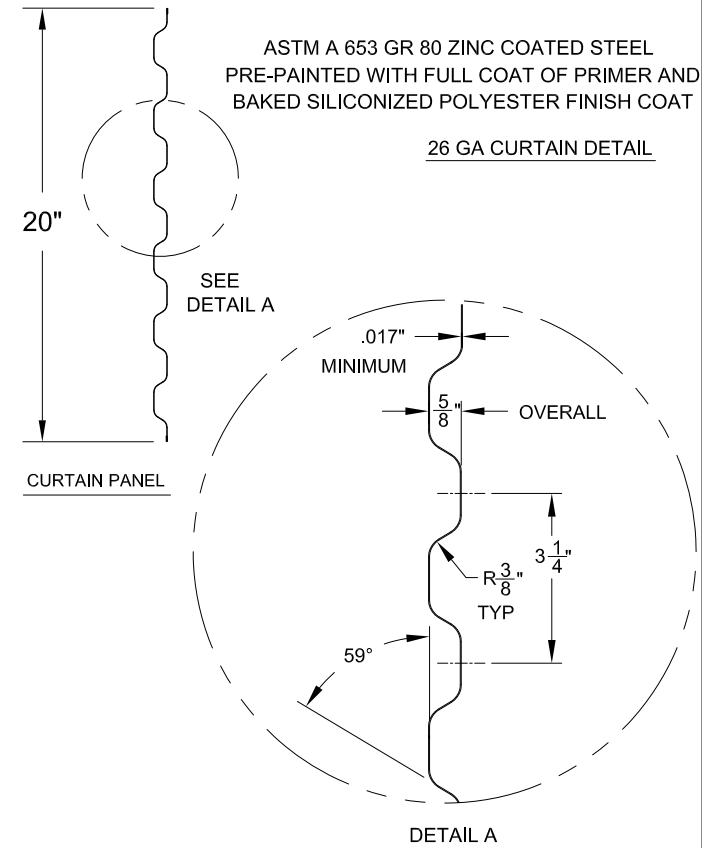
(*) FOR PUSH-UP OPERATION: 3 7/8"
 FOR HAND CHAIN OPERATION: 4 5/8"
 FOR ELECTRIC OPERATION: 5 3/8"
 FOR OUTSIDE OF CHAIN DRIVE: 6 1/8"
 NOTE: RIGHT SIDE DRIVE SHOWN



HEADROOM REQUIRED		
OPENING HEIGHT	VERTICAL HEADROOM	HORIZONTAL HEADROOM
THRU 8'-0"	20"	20"
OVER 8'-0" THRU 10'-0"	21"	21"
OVER 10'-0" THRU 14'-0"	21-1/2"	21"
OVER 14'-0" THRU 16'-0"	22"	22"
OVER 16'-0" THRU 18'-0"	22"	22"
OVER 18'-0" THRU 20'-0"	22"	22"

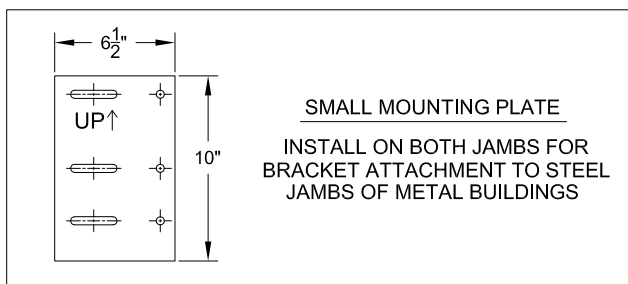
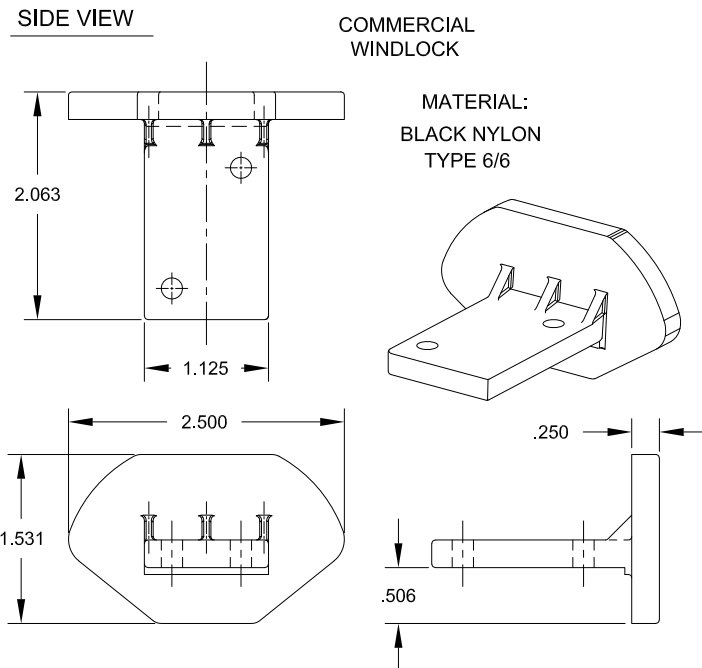
ALLOWABLE TRANSVERSE DESIGN WIND LOADS (PSF)			
MAX DOOR WIDTH	MAX DOOR HEIGHT	DESIGN LOAD POSITIVE (PSF)	DESIGN LOAD NEGATIVE (PSF)
8'-0"	20'-0"	53.6	59.6
9'-0"	20'-0"	47.8	53.1
10'-0"	20'-0"	43.0	47.8
11'-0"	20'-0"	39.2	43.5
12'-0"	20'-0"	36.0	40.0
13'-0"	20'-0"	30.6	34.0
14'-0"	20'-0"	26.6	29.5
15'-0"	20'-0"	23.4	26.0
16'-0"	20'-0"	20.9	23.2

REVISIONS			
REV	DESCRIPTION	DATE	APPROVAL
—	DRAWING RELEASE	1-31-03	DM
A	ADDED "T" BRACKET OPTION	01-23-12	CS
B	FASTENER CHANGE, 14 GA & 12 GA JAMBS ADDED	06-08-18	CS
C	ADD IBC/IRC 2018 COMPLIANCE TO NOTES	11-11-21	BA



John E. Scates, P.E.
 2560 King Arthur Blvd, Ste 124-54
 Lewisville, TX 75056
 FL PE 51737_TX PE 56308/F2203

Professional Engineer's seal provided only for verification of windload construction details.
 Printed copies of this document are not considered signed and sealed and the signature must be verified on any electronic copies.



THESE CONFIDENTIAL DOCUMENTS SUBMITTED BY JANUS CONTAIN INFORMATION OF A PROPRIETARY NATURE AND MAY NOT BE REPRODUCED OR USED TO MANUFACTURE ANYTHING IN PART OR IN WHOLE FOR ANY PURPOSE OTHER THAN THAT WHICH IS NECESSARY FOR PREPARATION OF BIDS OF ENGINEERING WITHOUT THE EXPRESS PERMISSION OF JANUS WHICH MAY RECALL DOCUMENTS AT ANY TIME.

UNLESS OTHERWISE SPECIFIED DIMENSIONS ARE IN INCHES AND TOLERANCES ARE:

DECIMAL	FRACTIONS	ANGLES	HOLE DIAMETERS
.XX ±.03	± 1/16"	± 1°	UNDER .251 +.004 -.003
.XXX ±.005			.251 to .500 +.006 -.003
			OVER .500 +.008 -.003

PART NUMBER:	NA
MATERIAL:	NA
APPLIED FINISH:	NA
UNIT OF MEASURE:	NA
APPROVALS	DATE
DRAWN: BECKY NELSON	2-1-11
CHECKED: DON MILLS	2-21-11
APPROVED: DON MILLS	2-21-11

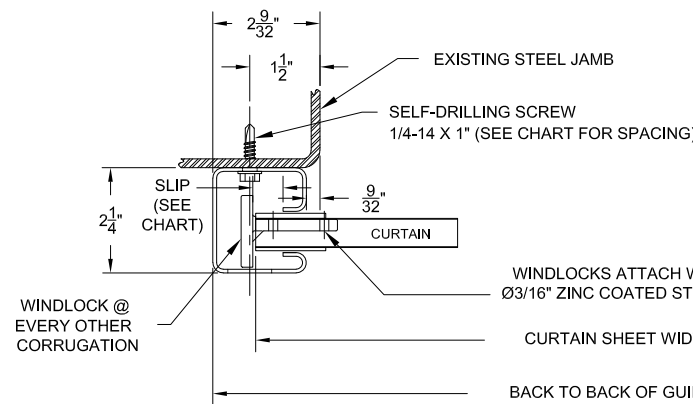
JANUS INTERNATIONAL GROUP, LLC.
 135 JANUS INTERNATIONAL BLVD TEMPLE, GA 30179
 770-562-2850/Fax 770-562-2264
 © 2018 Janus International Group, LLC. All Rights Reserved

CERTIFIED WIND LOAD RATED
 26 GA SERIES 3652 DOOR ASSEMBLY
 MAX SIZE 16'-0" X 20'-0"

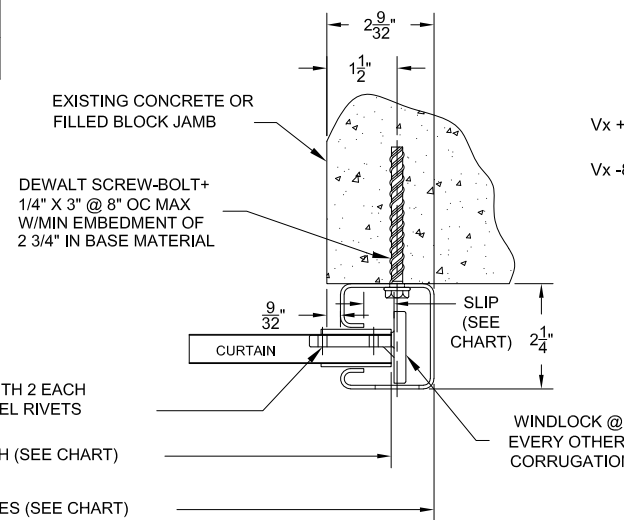
SIZE B	DRAWING NUMBER: T1014TX	REV: C
SCALE: NONE	SHEET: 1	OF: 2

SEE SHEET 2 FOR NOTES

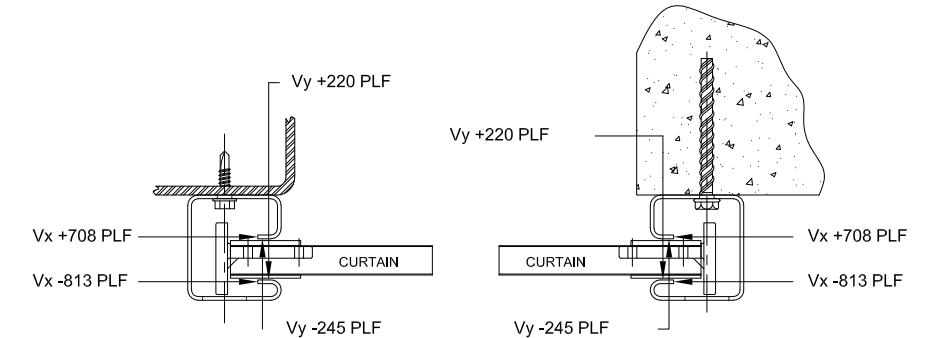
STEEL JAMB THICKNESS	FASTENER SPACING
14 GA (.075")	4.00" O.C. MAX
12 GA (.105")	5.00" O.C. MAX
3/16" (.188")	8.00" O.C. MAX



STEEL JAMBS
LH GUIDE MOUNT SHOWN



CONCRETE/FILLED BLOCK JAMBS
RH GUIDE MOUNT SHOWN



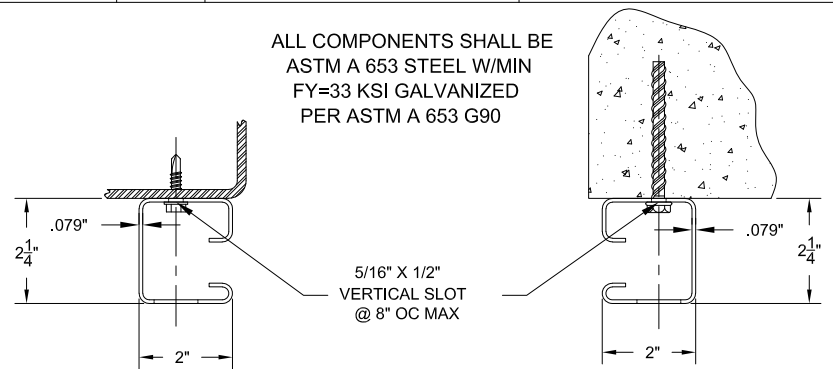
STEEL JAMBS
LH GUIDE MOUNT SHOWN

CONCRETE/FILLED BLOCK JAMBS
RH GUIDE MOUNT SHOWN

SUPERIMPOSED LOAD DIAGRAM

OPENING WIDTH	SLIP	CURTAIN SHEET WIDTH	BACK TO BACK OF GUIDES
≤7'-0"	3/8"	OPENING WIDTH + 2 3/16"	CURTAIN SHEET WIDTH + 2 3/8"
>7'-0" ≤9'-0"	1/2"	OPENING WIDTH + 2 7/16"	CURTAIN SHEET WIDTH + 2 1/8"
>9'-0" ≤18'-0"	21/32"	OPENING WIDTH + 2 3/4"	CURTAIN SHEET WIDTH + 1 13/16"

ALL COMPONENTS SHALL BE
ASTM A 653 STEEL W/MIN
FY=33 KSI GALVANIZED
PER ASTM A 653 G90



GUIDE MOUNTED TO
STEEL JAMBS
USING 1/4-14 X 1"
SELF-DRILLING SCREW

GUIDE MOUNTED TO
CONCRETE/FILLED BLOCK JAMBS
USING 1/4" X 3" DEWALT
SCREW-BOLT+

GENERAL NOTES:

- TESTING:
 - TESTED PER DASMA 108 (STATIC).
 - TESTING PERFORMED IN AN INDEPENDENT LAB.
 - DESIGN PRESSURE: +36.0/-40.0 PSF AT 12'-0" OPENING WIDTH.
- DESIGN WINDLOAD REQUIREMENTS FOR BUILDING OPENINGS SHALL BE DETERMINED BY OTHERS.
- SUPERIMPOSED LOADS ON THE JAMBS FROM THIS DOOR ARE DESIGNATED AS Vx and Vy HEREIN. OTHERS SHALL VERIFY ADEQUACY OF BUILDING STRUCTURE TO RESIST SUPERIMPOSED LOADS Vx, Vy.
- ALL WELDING SHALL BE PREFORMED BY QUALIFIED WELDERS IN ACCORDANCE WITH A.W.S. SPECIFICATIONS. WELDING ELECTRODES SHALL CONFORM TO A.W.S. A5.1 GRADE E-70
- DOORS SHALL BE PROVIDED WITH LOCK MECHANISMS AT THE OPTION OF THE OWNER
- ALL BOLTS AND WASHERS SHALL BE GALVANIZED OR STAINLESS STEEL WITH A MINIMUM TENSILE STRENGTH OF 60 KSI.
- ANCHOR NOTES:
 - EMBEDMENT LENGTH DOES NOT INCLUDE STUCCO FINISH.
 - FOR HOLLOW BLOCK, FILL ALL CELLS @ANCHOR WITH 2000 PSI GROUT.
 - CONCRETE TO BE 2500 PSI MIN.
 - ANCHORS SHALL BE INSTALLED IN ACCORDANCE WITH MANUFACTURER'S SPECIFICATIONS
 - APPROVED CONCRETE AND FILLED-CMU ANCHORS:
 - 1/4" DEWALT SCREW-BOLT+
 - 1/4" SIMPSON TITEN HD
- DOOR OPERATION TYPE MAY BE PUSH-UP, HAND CHAIN, OR ELECTRIC.
- GUIDE-TO-JAMB ATTACHMENT FASTENERS BEGIN 4" FROM FLOOR AND END 4" BELOW THE TOP OF WALL OPENING.
- COMPLIES WITH THE WINDLOAD REQUIREMENTS OF IBC/IRC 2018

THESE CONFIDENTIAL DOCUMENTS SUBMITTED BY JANUS CONTAIN INFORMATION OF A PROPRIETARY NATURE AND MAY NOT BE REPRODUCED OR USED TO MANUFACTURE ANYTHING IN PART OR IN WHOLE FOR ANY PURPOSE OTHER THAN THAT WHICH IS NECESSARY FOR PREPARATION OF BIDS OF ENGINEERING WITHOUT THE EXPRESS PERMISSION OF JANUS WHICH MAY RECALL DOCUMENTS AT ANY TIME.		PART NUMBER: NA		JANUS INTERNATIONAL GROUP, LLC. 135 JANUS INTERNATIONAL BLVD TEMPLE, GA 30179 770-562-2850/Fax 770-562-2264 © 2012 Janus International Group, LLC. All Rights Reserved																	
UNLESS OTHERWISE SPECIFIED DIMENSIONS ARE IN INCHES AND TOLERANCES ARE:		MATERIAL: NA																			
		APPLIED FINISH: NA																			
		UNIT OF MEASURE: NA																			
<table border="1"> <thead> <tr> <th>DECIMAL</th> <th>FRACTIONS</th> <th>ANGLES</th> <th>HOLE DIAMETERS</th> </tr> </thead> <tbody> <tr> <td>.XX ±.03</td> <td>± 1/16"</td> <td>± 1°</td> <td>UNDER .251</td> </tr> <tr> <td>.XXX ±.005</td> <td></td> <td></td> <td>.251 to .500</td> </tr> <tr> <td></td> <td></td> <td></td> <td>OVER .500</td> </tr> </tbody> </table>		DECIMAL	FRACTIONS	ANGLES	HOLE DIAMETERS	.XX ±.03	± 1/16"	± 1°	UNDER .251	.XXX ±.005			.251 to .500				OVER .500	APPROVALS		DATE	
		DECIMAL	FRACTIONS	ANGLES	HOLE DIAMETERS																
		.XX ±.03	± 1/16"	± 1°	UNDER .251																
.XXX ±.005			.251 to .500																		
			OVER .500																		
DRAWN: BECKY NELSON		2-1-11		CERTIFIED WIND LOAD RATED 26 GA SERIES 3652 DOOR ASSEMBLY MAX SIZE 16'-0" X 20'-0"																	
CHECKED: DON MILLS		2-21-11																			
APPROVED: DON MILLS		2-21-11																			
SCALE: NONE		DRAWING NUMBER: T1014TX		REV: C																	
SHEET: 2		OF: 2																			