

NOTE: ALL NON-DESCRIPTIVE FASTENERS SHOWN TO BE 1/4" X 3/4" LONG HEX HEAD SHEET METAL SCREWS.  
 NOTE: 4-SECTION DOOR STACK SHOWN. ADDITIONAL SECTIONS SHALL BE CONSTRUCTED SAME AS THE THIRD SECTION.  
 NOTE: 8 FOOT TALL TRACK BRACKETS SHOWN. BRACKET SPACING MAY BE ADJUSTED DOWNWARD FOR SHORTER DOORS. TALLER DOORS REQUIRE BRACKETS ADDED AT SPACINGS NOT EXCEEDING 15 INCHES.

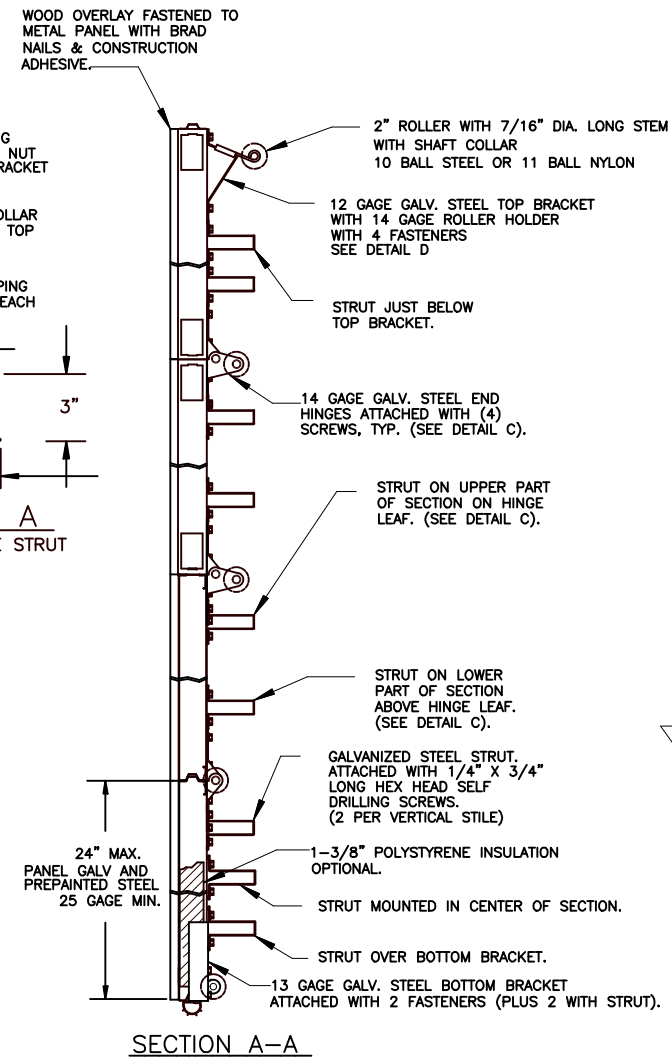
**SECTION B-B**

MAX. DOOR SIZE		P.S.F. TABLE			
WIDTH	HEIGHT	DESIGN PRESSURE POSITIVE	DESIGN PRESSURE NEGATIVE	TEST PRESSURE POSITIVE	TEST PRESSURE NEGATIVE
14'-0"	10'-0"	41.0	-50.9		
16'-0"	10'-0"	35.9	-44.5		
18'-0"	10'-0"	31.9	-39.6	47.9	-59.5

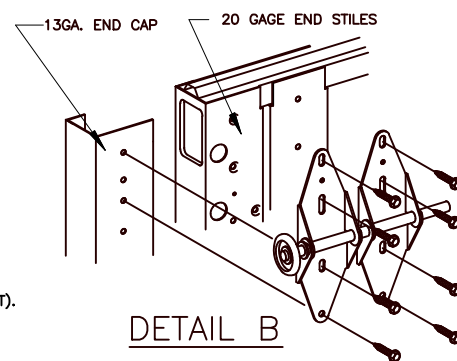
John E. Scates PE  
 2560 King Arthur Blvd #124-54  
 Lewisville, TX 75056  
 TX-PE 56308, F-2203  
 FL-PE-51737

Professional Engineer's seal provided only for verification of windload construction details.

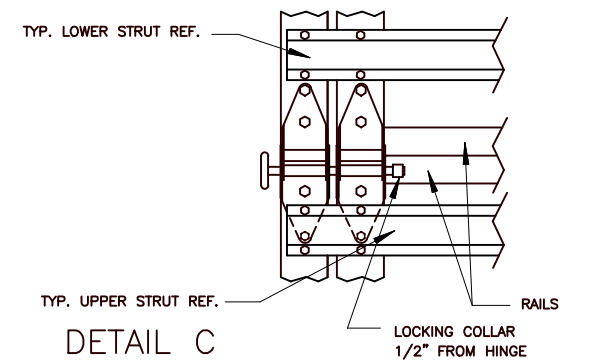
DOORS SHOWN ON THIS DRAWING HAVE BEEN DEMONSTRATED TO WITHSTAND THE PRESSURES LISTED IN THE TABLE ABOVE VIA TESTING TO ANSI/DASMA 108-05/12/17. DETERMINATION OF SUITABILITY FOR SPECIFIC SITES IS THE RESPONSIBILITY OF OTHERS.



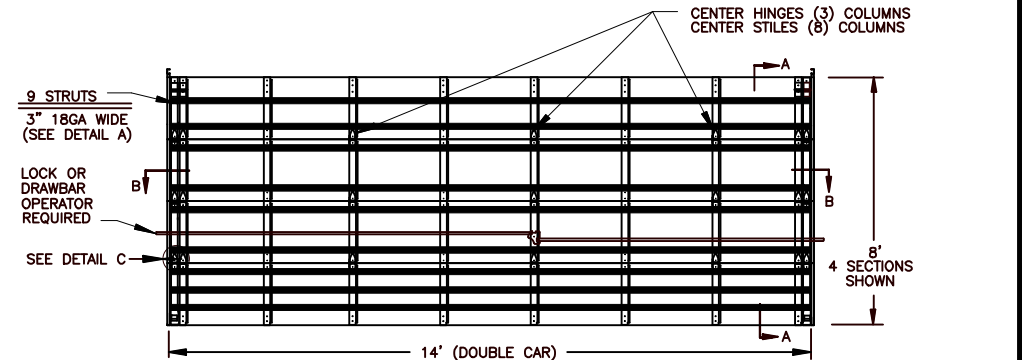
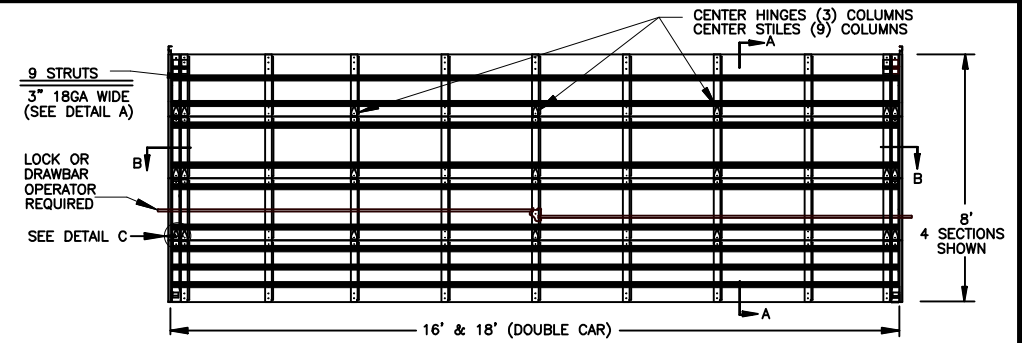
**SECTION A-A**



**DETAIL B**



**DETAIL C**



REV.	DATE	CHANGE
A	6/10/20	ROLLER NOTES, PE ADDRESS

## GARAGE DOOR SERVICES

MODELS: HURRICANE SERIES 100/200

RESIDENTIAL PAN DOORS WITH FULL FACE WOOD OR SMART TRIM.

TOLERANCE: FRAC. ± 1/64" DEC. ± .015 ANG. ± 1"

NEXT LEVEL	DATE: 10/06/10	DWG. NO. GDS-13-01
PLOT SCALE	DRN. BY RLH	SHT 2 OF 2