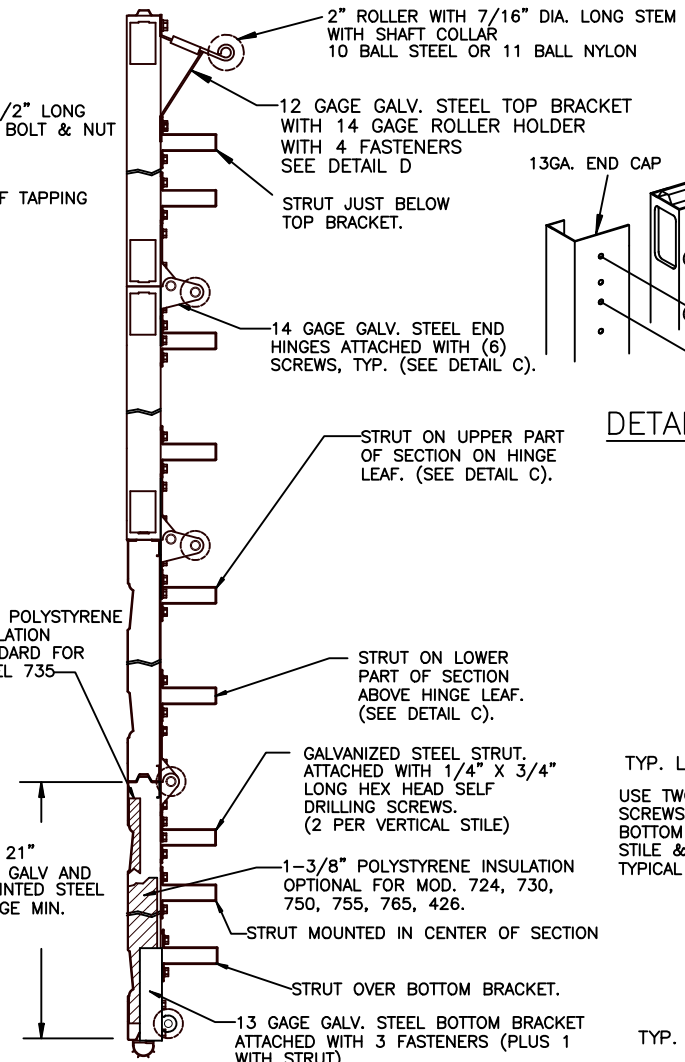
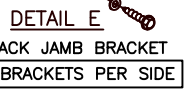
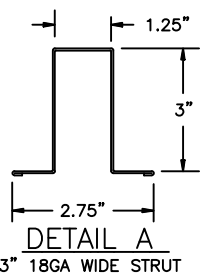
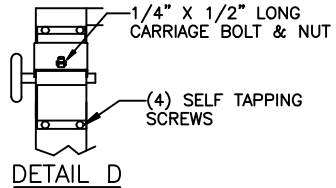


13 GAGE GALV. STEEL TRACK BRACKETS. SEE ABOVE FOR SPACING. FASTEN TO WOOD JAMBS WITH 5/16" X 1-1/2" LAG SCREWS & WASHERS. SEE DETAIL E. PREPARATION OF JAMBS BY OTHERS. SEE WINDSOR DWG. 99-A-061 FOR MORE INFO.

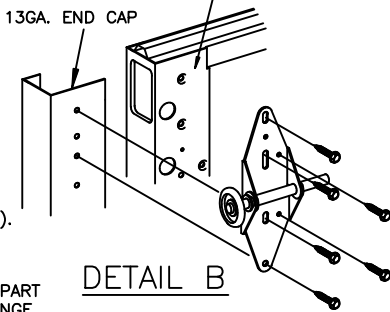
SECTION B-B



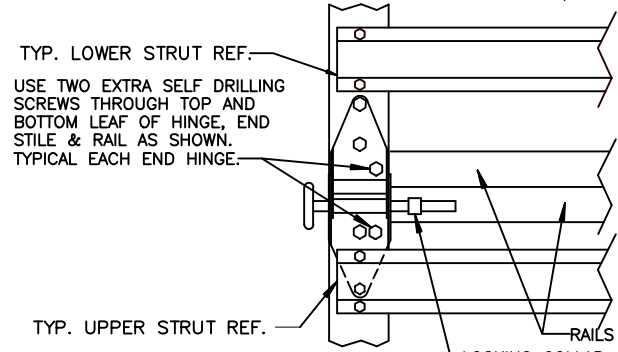
SECTION A-A

NOTE: ALL NON-DESCRIPTIVE FASTENERS SHOWN TO BE 1/4"-20 X 5/8" HEX BOLTS & NUTS OR 1/4" X 3/4" LONG HEX HEAD SHEET METAL SCREWS.

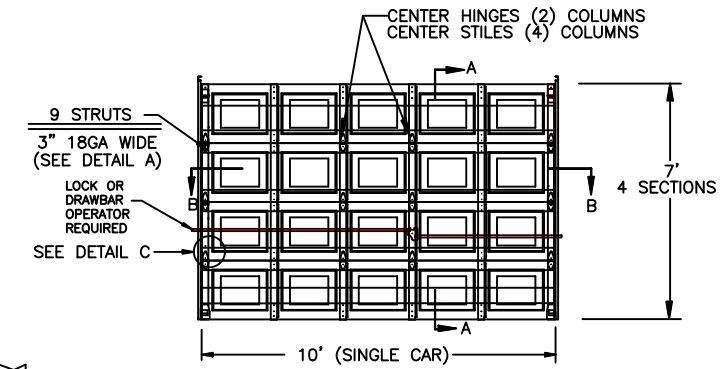
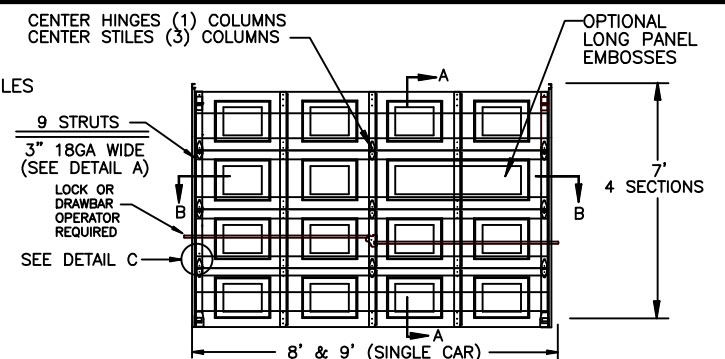
COMPLIES WITH THE WINDLOAD REQUIREMENTS OF THE IBC/IRC 2018.



DETAIL B



DETAIL C



FL 15080

DOOR SIZE		P.S.F. TABLE			
WIDTH	HEIGHT	DESIGN PRESSURE		TEST PRESSURE	
		POSITIVE	NEGATIVE	POSITIVE	NEGATIVE
8'-0"	7'-0"	+37.8	-42.9		
9'-0"	7'-0"	+37.8	-42.9		
10'-0"	7'-0"	+37.8	-42.9	+56.7	-64.35

TESTED PER ANSI/DASMA 108-05/12/17 (STATIC PRESSURE) & TAS 201/203-94 (IMPACT) PLUS ANSI/DASMA 115-05/17 (IMPACT). DETERMINATION OF SUITABILITY FOR SPECIFIC SITES IS THE RESPONSIBILITY OF OTHERS.

John E. Scates PE
2560 King Arthur Blvd #124-54
Lewisville, TX 75056
TX-PE 56308, F-2203
FL-PE-51737

Professional Engineer's seal provided only for verification of windload construction details.

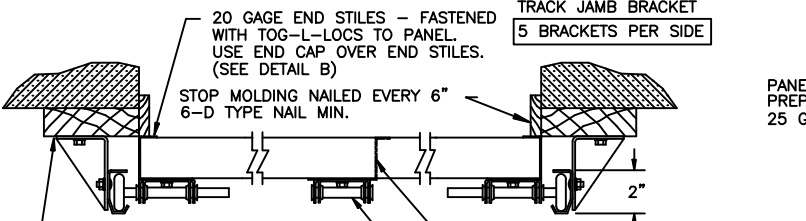
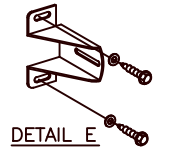
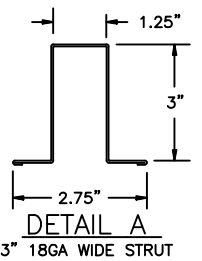
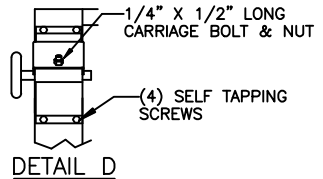
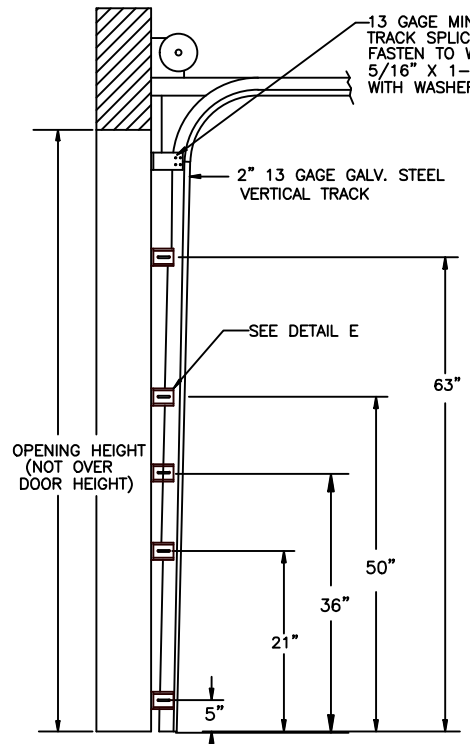
REV.	DATE	CHANGE
C	6/01/20	ROLLER NOTES, PE ADDRESS
B	1/28/13	REV LOGO & ADDRESS
A	12/15/11	NEW LOGO/ENG. STAMP



5800 SCOTT HAMILTON DR.
LITTLE ROCK, AR 72209
(501) 562-1872

MODELS: 730/735/724/750/755/426

PART NAME: WINDLOAD RESIDENTIAL PAN DOORS W3 C & W6 B 8 X 7, 9 X 7, 10 X 7		DATE: 6/09/10		DWG. NO. 99-B-096	
TOLERANCE FRAC. ± 1/64" DEC. ± .015 ANG. ± 1'	NEXT LEVEL	DRN. BY BNB	SHT 1 OF 4		
SCALE NONE	PLOT SCALE				



STOP MOLDING NAILED EVERY 6" 6-D TYPE NAIL MIN.

20 GAGE GALV. STEEL CENTER STILE ATTACHED WITH TOG-L-LOCKS OR RIVETS.

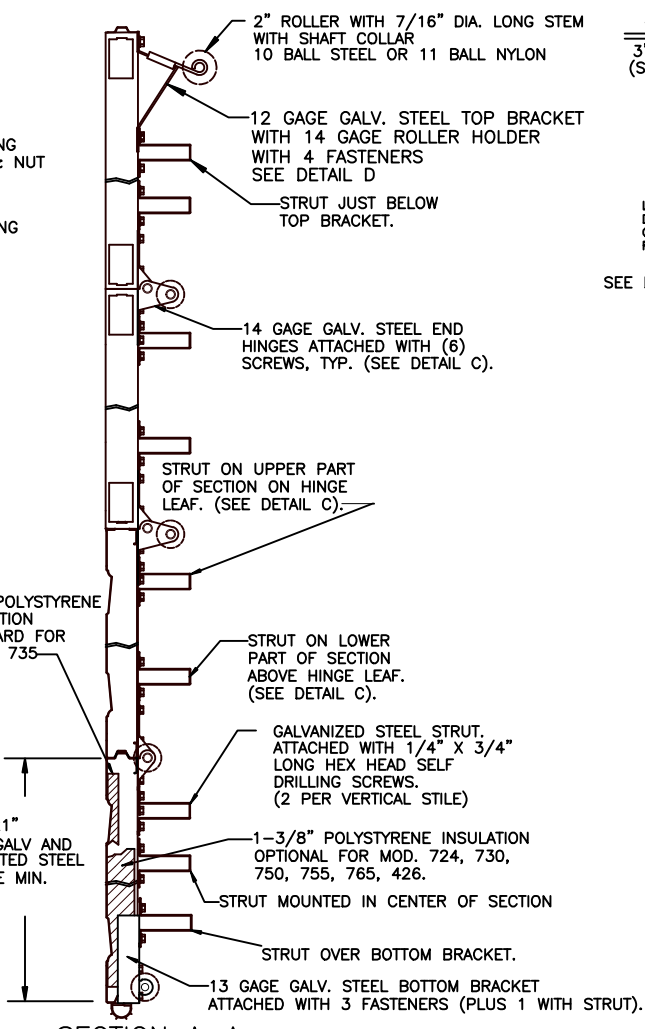
13 GAGE GALV. STEEL TRACK BRACKETS. SEE ABOVE FOR SPACING. FASTEN TO WOOD JAMBS WITH 5/16" X 1-1/2" LAG SCREWS & WASHERS. SEE DETAIL E. PREPARATION OF JAMBS BY OTHERS. SEE WINDSOR DWG. 99-A-061 FOR MORE INFO.

SECTION B-B

DOOR SIZE		P.S.F. TABLE			
WIDTH	HEIGHT	DESIGN PRESSURE POSITIVE	DESIGN PRESSURE NEGATIVE	TEST PRESSURE POSITIVE	TEST PRESSURE NEGATIVE
16'-0"	7'-0"	+30.8	-37.66		
18'-0"	7'-0"	+30.8	-37.66	+46.2	-56.49

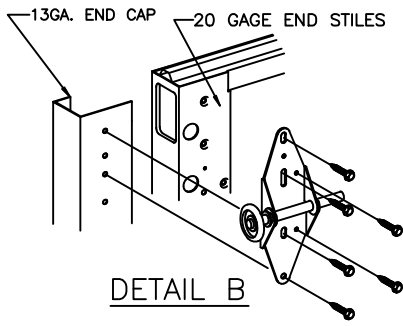
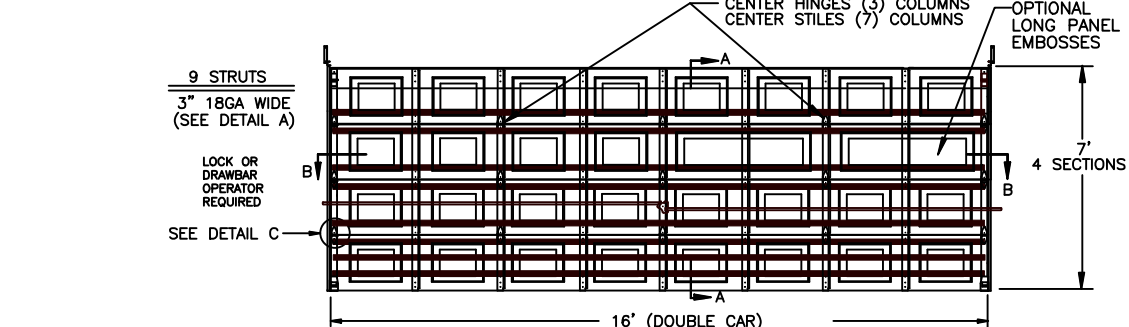
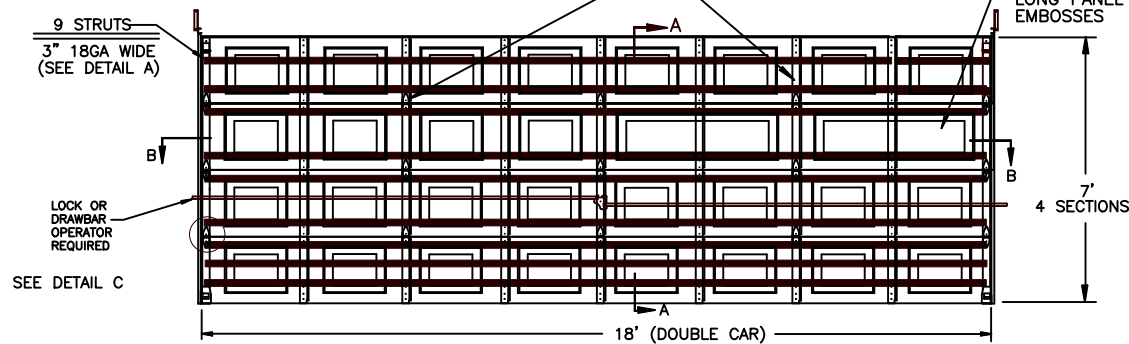
COMPLIES WITH THE WINDLOAD REQUIREMENTS OF THE IBC/IRC 2018.

TESTED PER ANSI/DASMA 108-05/12/17 (STATIC PRESSURE) & TAS 201/203-94 (IMPACT) PLUS ANSI/DASMA 115-05/17 (IMPACT).
DETERMINATION OF SUITABILITY FOR SPECIFIC SITES IS THE RESPONSIBILITY OF OTHERS.

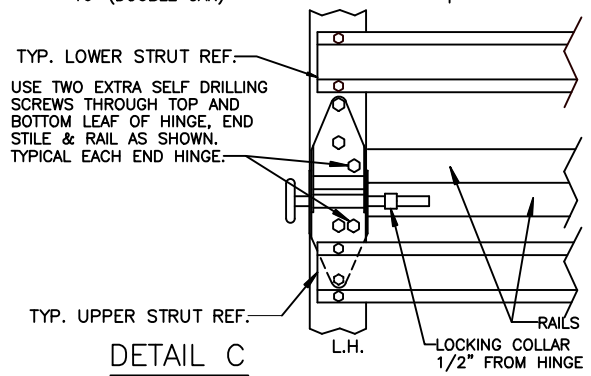


SECTION A-A

NOTE: ALL NON-DESCRIPTIVE FASTENERS SHOWN TO BE 1/4"-20 X 5/8" HEX BOLTS & NUTS OR 1/4" X 3/4" LONG HEX HEAD SHEET METAL SCREWS.



DETAIL B



DETAIL C

FL 15080

John E Scates PE
2560 King Arthur Blvd #124-54
Lewisville, TX 75056
TX-PE 56308, F-2203
FL-PE-51737

Professional Engineer's seal provided only for verification of windload construction details.

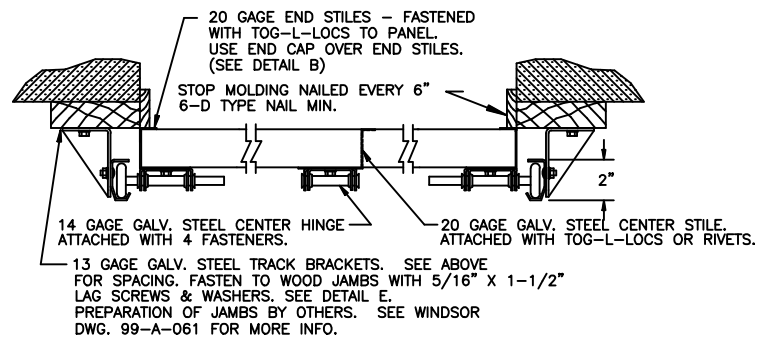
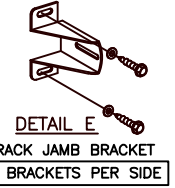
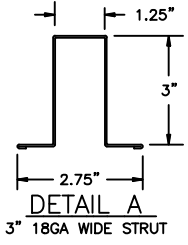
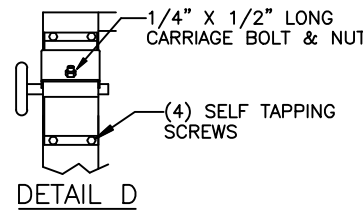
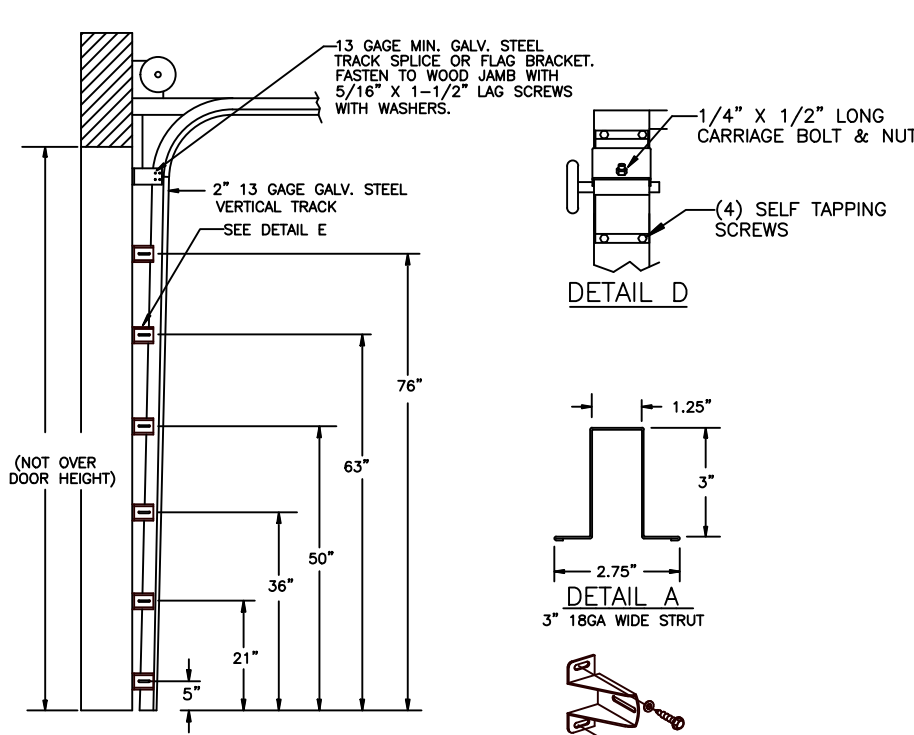
REV.	DATE	CHANGE
C	6/01/20	ROLLER NOTES, PE ADDRESS
B	1/28/13	REV LOGO & ADDRESS
A	12/15/11	NEW LOGO/ENG. STAMP

W WINDSOR DOOR

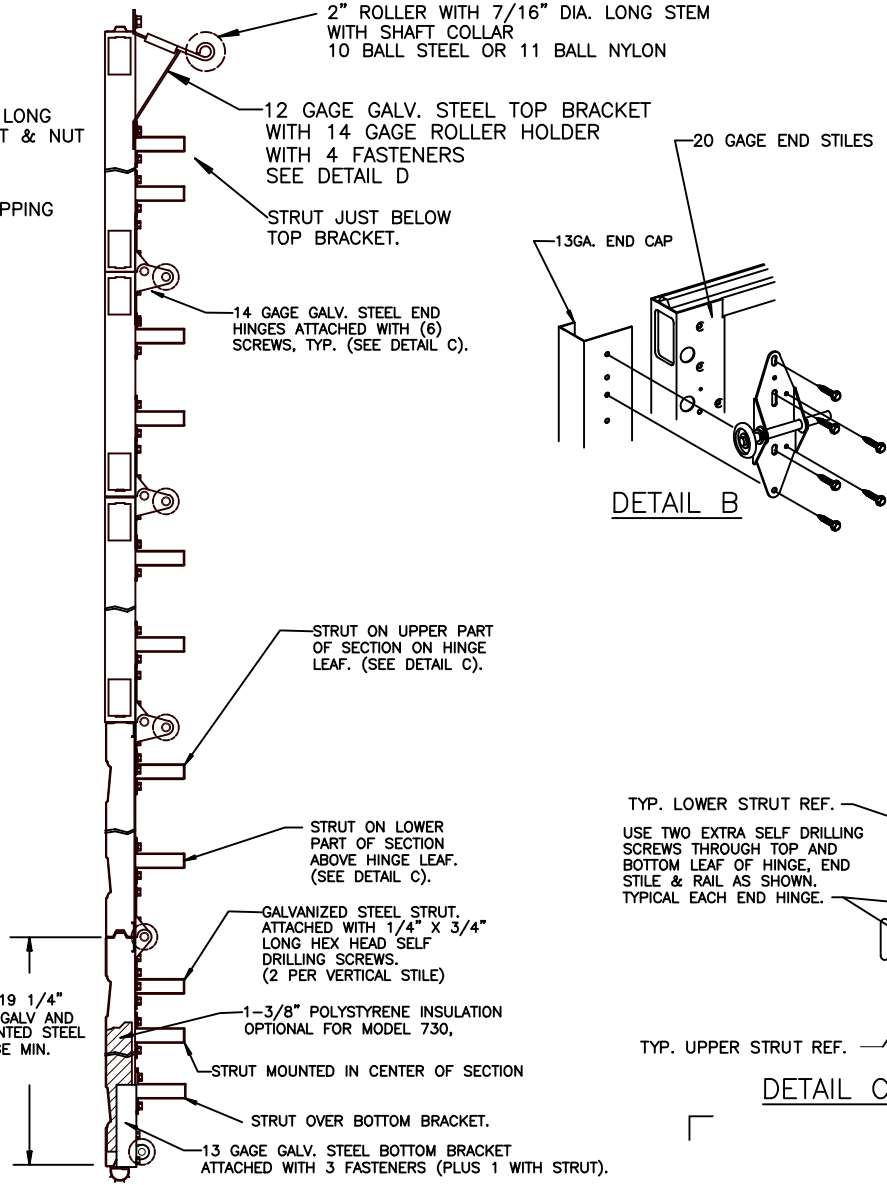
5800 SCOTT HAMILTON DR. LITTLE ROCK, AR 72209 (501) 562-1872

MODELS: 730/735/724/750/755/426

PART NAME: WINDLOAD RESIDENTIAL PAN DOORS		DATE: 6/09/10		DWG. NO. 99-B-096	
TOLERANCE FRAC. ± 1/64" DEC. ± .015 ANG. ± 1'		NEXT LEVEL 16 X 7, 18 X 7		DRN. BY BNB	
SCALE NONE		PLOT SCALE		SHT 2 OF 4	



SECTION B-B

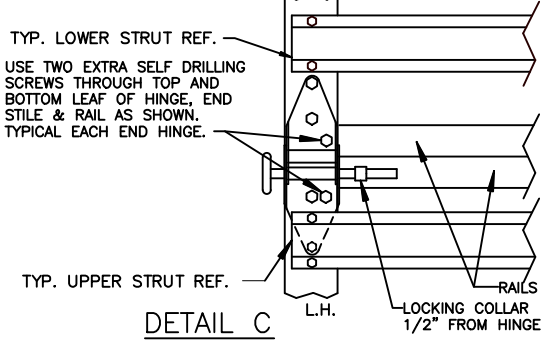
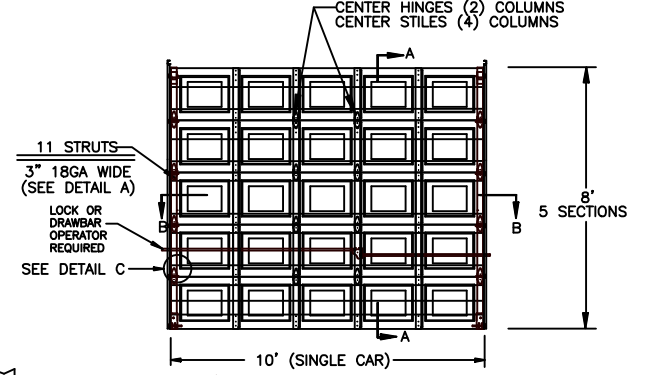
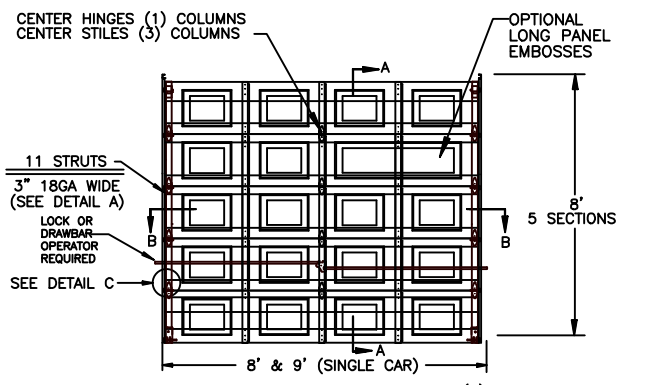


SECTION A-A

NOTE: ALL NON-DESCRIPTIVE FASTENERS SHOWN TO BE 1/4"-20 X 5/8" HEX BOLTS & NUTS OR 1/4" X 3/4" LONG HEX HEAD SHEET METAL SCREWS.

John E Scates PE
2560 King Arthur Blvd #124-54
Lewisville, TX 75056
TX-PE 56308, F-2203
FL-PE-51737

Professional Engineer's seal provided only for verification of windload construction details.



DETAIL C

FL 15080

DOOR SIZE		P.S.F. TABLE			
WIDTH	HEIGHT	DESIGN PRESSURE	TEST PRESSURE	POSITIVE	NEGATIVE
8'-0"	8'-0"	+37.8	-42.9		
9'-0"	8'-0"	+37.8	-42.9		
10'-0"	8'-0"	+37.8	-42.9	+56.7	-64.35

COMPLIES WITH THE WINDLOAD REQUIREMENTS OF THE IBC/IRC 2018.

TESTED PER ANSI/DASMA 108-05/12/17 (STATIC PRESSURE) & TAS 201/203-94 (IMPACT) PLUS ANSI/DASMA 115-05/17 (IMPACT).

DETERMINATION OF SUITABILITY FOR SPECIFIC SITES IS THE RESPONSIBILITY OF OTHERS.



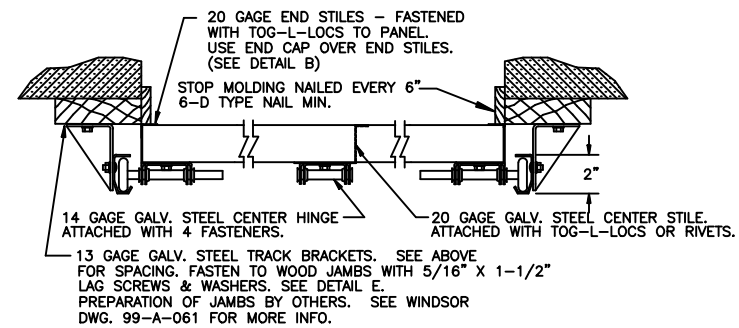
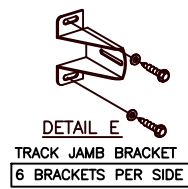
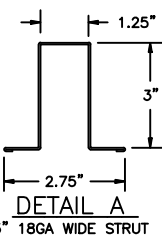
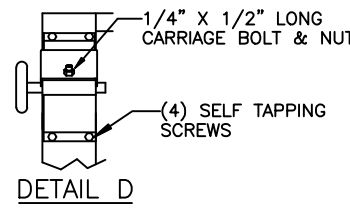
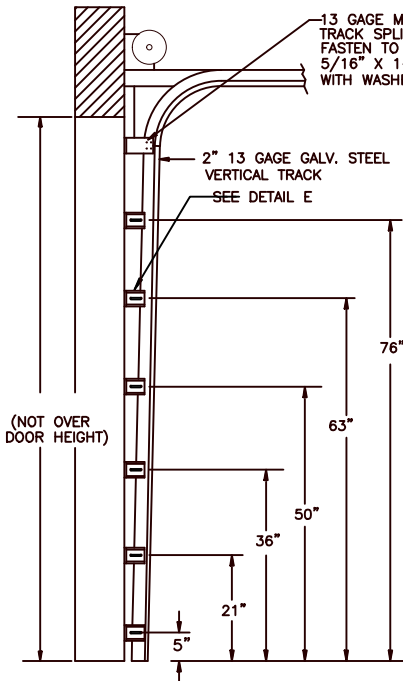
5800 SCOTT HAMILTON DR.
LITTLE ROCK, AR 72209
(501) 562-1872

MODELS: 730/735/724/750/755/426

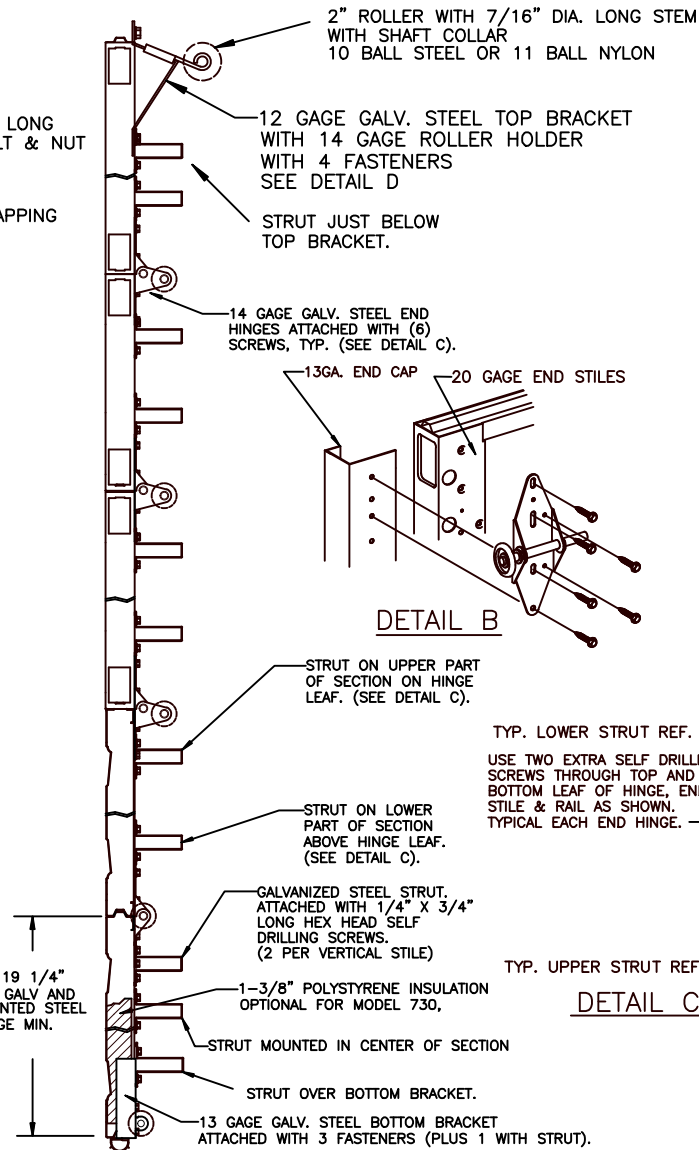
PART NAME: WINDLOAD RESIDENTIAL PAN DOORS
W3 C & W6 B
8 X 8, 9 X 8, 10 X 8

REV.	DATE	CHANGE
C	6/01/20	ROLLER NOTES, PE ADDRESS
B	1/28/13	REV LOGO & ADDRESS
A	12/15/11	NEW LOGO/ENG. STAMP

TOLERANCE	SCALE	FRAC. ± 1/64"	DEC. ± .015	ANG. ± 1'
NONE	NONE			
DATE:	6/09/10	DWG. NO.:	99-B-096	
DRN. BY:	BNB	SHT	3 OF 4	

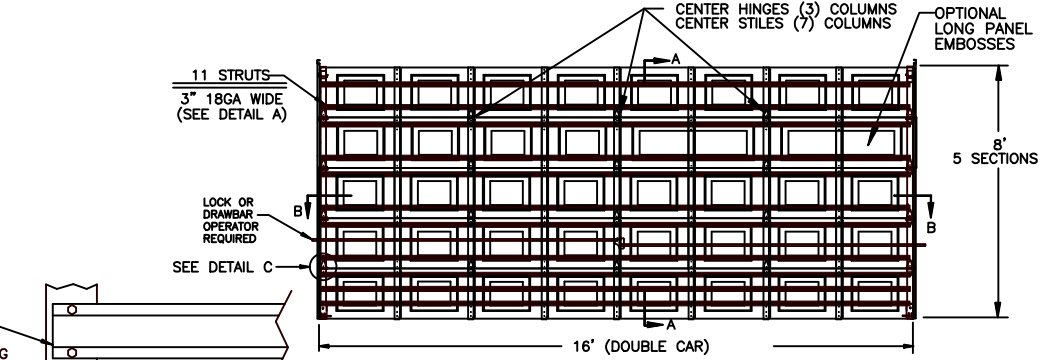
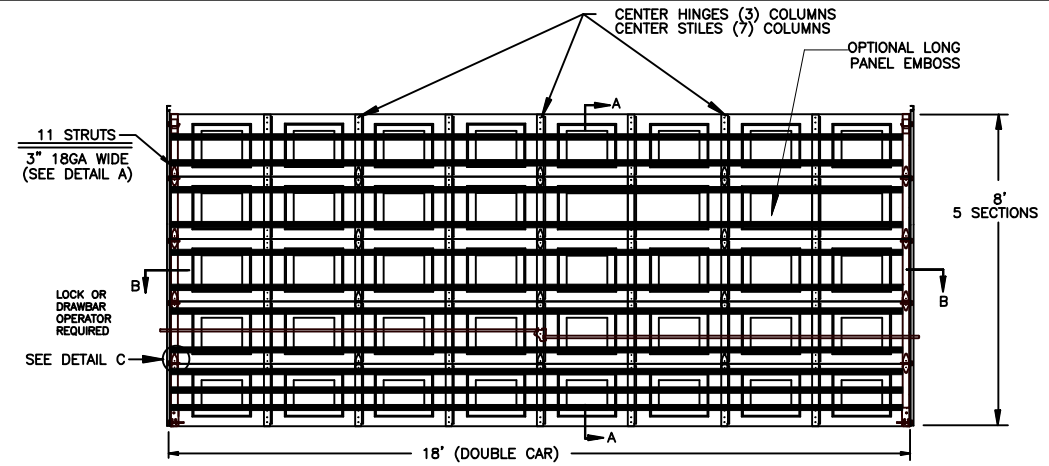


SECTION B-B



SECTION A-A

NOTE: ALL NON-DESCRIPTIVE FASTENERS SHOWN TO BE 1/4"-20 X 5/8" HEX BOLTS & NUTS OR 1/4" X 3/4" LONG HEX HEAD SHEET METAL SCREWS.



FL 15080

DOOR SIZE		P.S.F. TABLE			
WIDTH	HEIGHT	DESIGN PRESSURE		TEST PRESSURE	
		POSITIVE	NEGATIVE	POSITIVE	NEGATIVE
16'-0"	8'-0"	+30.8	-37.66		
18'-0"	8'-0"	+30.8	-37.66	+46.2	-56.49

COMPLIES WITH THE WINDLOAD REQUIREMENTS OF THE IBC/IRC 2018.

TESTED PER ANSI/DASMA 108-05/12/17 (STATIC PRESSURE) & TAS 201/203-94 (IMPACT) PLUS ANSI/DASMA 115-05/17 (IMPACT).

DETERMINATION OF SUITABILITY FOR SPECIFIC SITES IS THE RESPONSIBILITY OF OTHERS.

John E. Scates PE
2560 King Arthur Blvd #124-54
Lewisville, TX 75056
TX-PE 56308, F-2203
FL-PE-51737

Professional Engineer's seal provided only for verification of windload construction details.

REV.	DATE	CHANGE
C	6/01/20	ROLLER NOTES, PE ADDRESS
B	1/28/13	REV LOGO & ADDRESS
A	12/15/11	NEW LOGO/ENG. STAMP

W WINDSOR DOOR

5800 SCOTT HAMILTON DR. LITTLE ROCK, AR 72209 (501) 562-1872

MODELS: 730/735/724/750/755/426

PART NAME: WINDLOAD RESIDENTIAL PAN DOORS W2 C & W4 B 16 X 8, 18 X 8

TOLERANCE	FRAC. ± 1/64" DEC. ± .015 ANG. ± 1°	SCALE	PLOT SCALE
		SCALE NONE	PLOT SCALE

DATE: 6/09/10	DWG. NO. 99-B-096
DRN. BY BNB	SHT 4 of 4