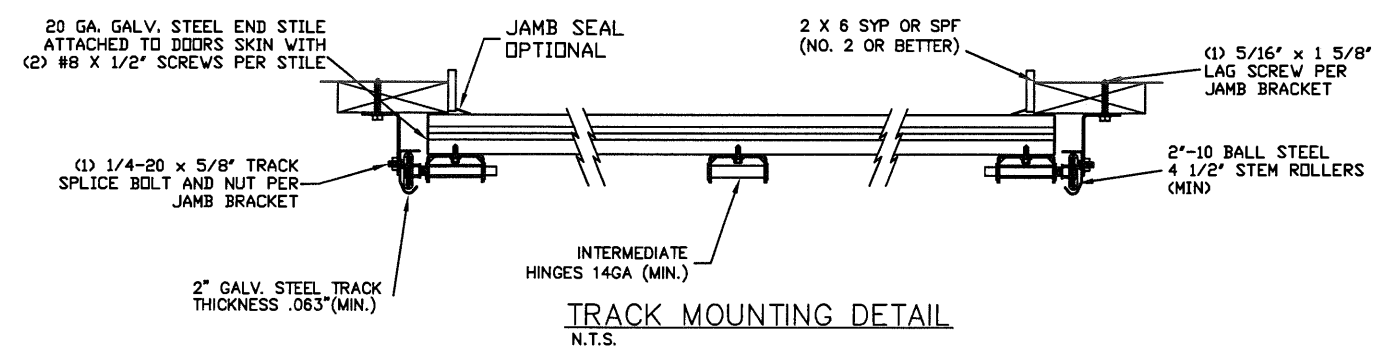
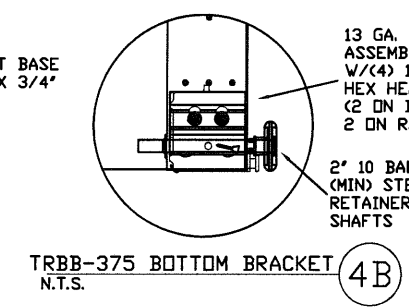
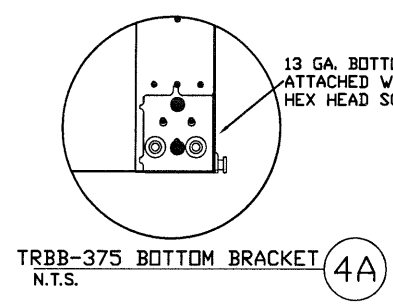
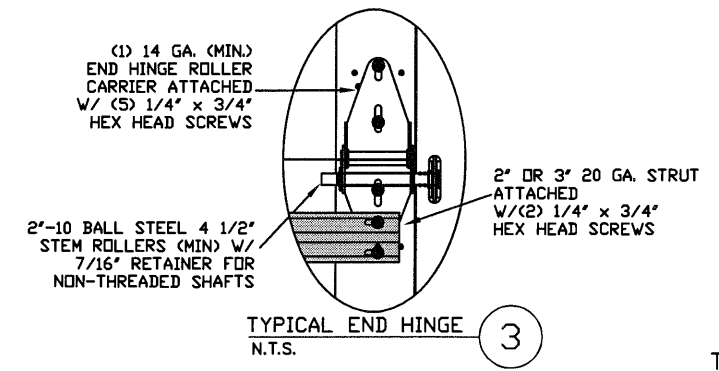
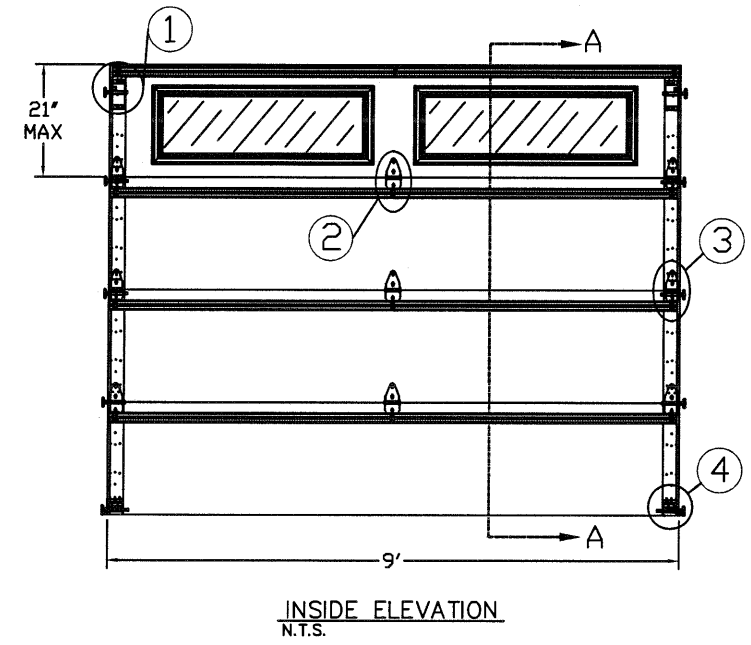
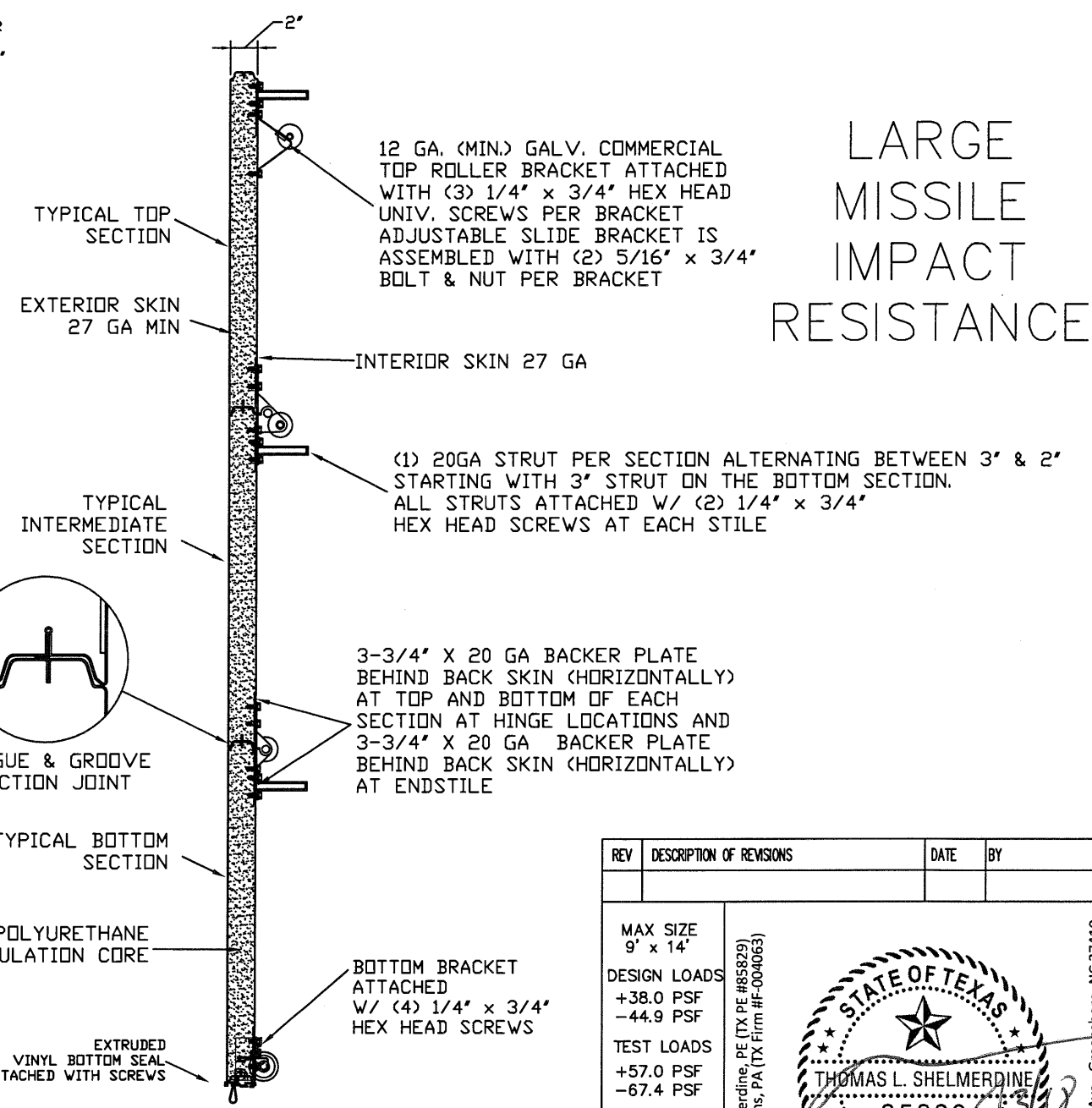
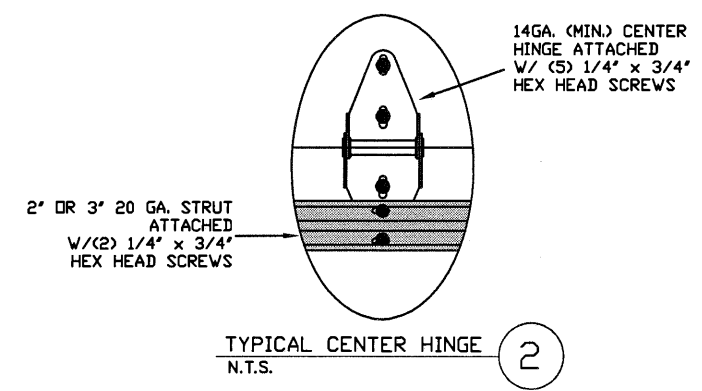
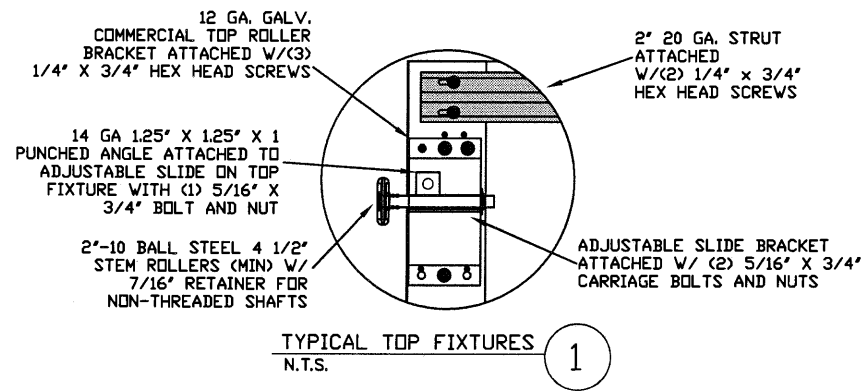


LARGE MISSILE IMPACT RESISTANCE



THE METHOD OF TESTING WAS IN SUBSTANTIAL CONFORMANCE WITH THE PROCEDURE DESCRIBED IN DASMA 108-05 & 115-05, AND ASTM E330-02, E1886-05, E1996-09, & F588-07. THE PRESSURES SHOWN ON THE DRAWINGS WERE CALCULATED USING ASCE 7-05 WITH THE FOLLOWING PARAMETERS (5 FEET OF DOOR WIDTH IN THE END ZONE, ROOF AT ANY SLOPE I=1.0):

WIND SPEED (MPH)	155	141	134	128	123
EXPOSURE LEVEL	B	C	C	D	D
MEAN ROOF HEIGHT	30'	15'	25'	15'	25'

REV	DESCRIPTION OF REVISIONS	DATE	BY

MAX SIZE 9' x 14'

DESIGN LOADS +38.0 PSF -44.9 PSF

TEST LOADS +57.0 PSF -67.4 PSF

LARGE MISSILE IMPACT RESISTANCE

Thomas L. Shelmerdine, PE (TX PE #85829) Structural Solutions, PA (TX Firm #F-004063)

STATE OF TEXAS
THOMAS L. SHELMERDINE
85829
LICENSED PROFESSIONAL ENGINEER

TX

Amarr
ENTREMATICS

MODEL P500 AMARR OLYMPUS 500
MODEL D500 AMARR DESIGNERS CHOICE DC-500

SIZE	DRAWN BY	RLR	DATE	02/06/18	DRAWING NUMBER
B	CHECKED BY	RLR	DATE	02/06/18	IRC-P509-155-15-1

ENTREMATICS
165 CARRIAGE COURT WINSTON-SALEM, NC. 27105

SHEET 1 OF 3

5921-G W. Friendly Ave., Greensboro, NC 27410

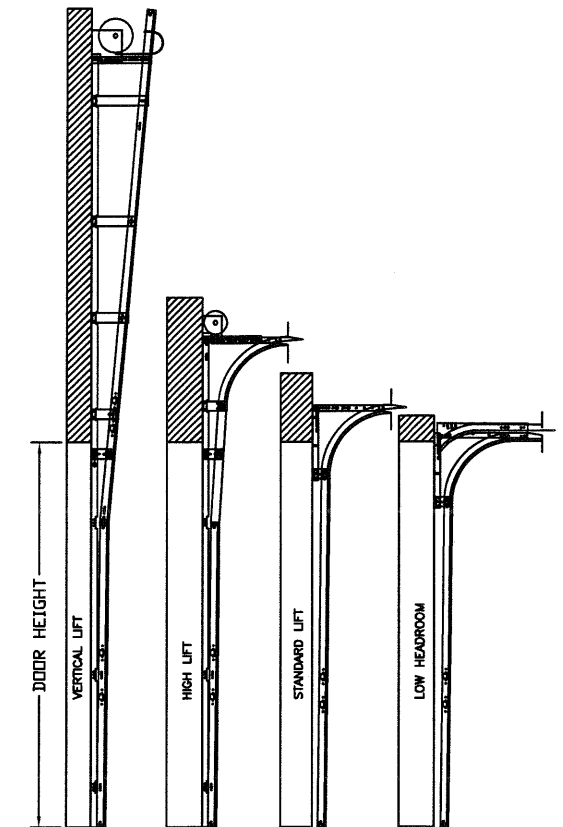
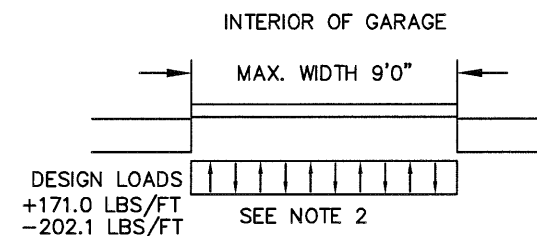
TABLE 1

HEIGHT	TRACK ATTACHMENT							SPLICE
	A	B	C	D	E	F	G	
6' 0"	3.5"	10"	38"					64"
6' 6"	3.5"	10"	38"	63"				70"
7' 0"	3.5"	10"	38"	63"				76"
7' 6"	3.5"	10"	38"	63"				82"
8' 0"	3.5"	10"	38"	63"				88"
8' 6"	3.5"	10"	38"	63"				94"
9' 0"	3.5"	10"	38"	63"	88"			100"
9' 6"	3.5"	10"	38"	63"	88"			106"
10' 0"	3.5"	10"	38"	63"	88"			112"
10' 6"	3.5"	10"	38"	63"	88"			118"
11' 0"	3.5"	10"	38"	63"	88"	112"		124"
11' 6"	3.5"	10"	38"	63"	88"	112"		130"
12' 0"	3.5"	10"	38"	63"	88"	112"		136"
12' 6"	3.5"	10"	38"	63"	88"	112"		142"
13' 0"	3.5"	10"	38"	63"	88"	112"	136"	148"
13' 6"	3.5"	10"	38"	63"	88"	112"	136"	154"
14' 0"	3.5"	10"	38"	63"	88"	112"	136"	160"

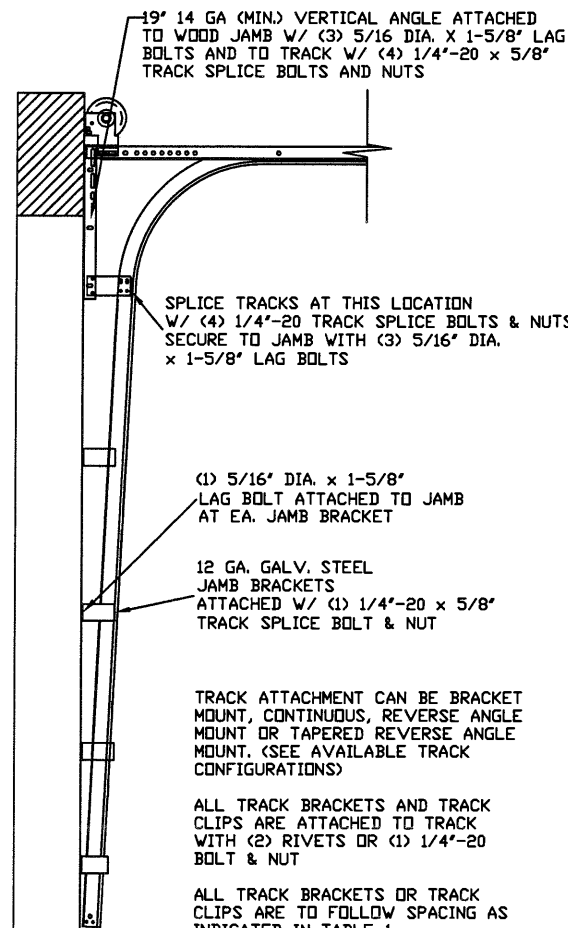
ALL TRACK ATTACHMENT SPACING +/- 2" ALLOWED WITH SYP OR SPF NO. 2 OR BETTER ONLY

SPECIFICATIONS AND NOTES

1. ALL THE LOAD FROM THE DOOR IS TRANSFERRED TO THE VERTICAL TRACK, FROM THE TRACK THE LOAD IS TRANSFERRED TO THE VERTICAL JAMBS. THE HORIZONTAL JAMB OR HEADER RECEIVES NO PORTION OF THE LOAD TRANSFERRED FROM THE DOOR.
2. EACH VERTICAL JAMBS RECEIVES MAXIMUM DESIGN LOADS OF: +171.0 LBS/FT & -202.1 LBS/FT.
3. DOOR AND HARDWARE WILL BE DESIGNED, MANUFACTURED AND INSTALLED WITH STANDARDS AS SET FORTH BY DASMA.
4. DOOR SECTIONS SHALL BE 27GA MIN. INTERIOR AND 27GA MIN. EXTERIOR SKIN ROLLED FORMED, W/ BAKED ON POLYESTER FINISH.
5. SUPPORTING STRUCTURAL ELEMENTS SHALL BE DESIGNED BY A REGISTERED PROFESSIONAL ENGINEER FOR WIND LOADS INDICATED ON THIS DRAWING IN ADDITION TO OTHER LOADINGS.
6. PANEL STAMP DOES NOT AFFECT WINDLOAD CAPABILITIES.



AVAILABLE TRACK CONFIGURATIONS
N.T.S.



TRACK CONFIGURATION FOR UP TO 14' TALL DOORS
N.T.S.

WOOD JAMB ATTACHMENT TO STRUCTURE

2 X 6 VERTICAL JAMB ATTACHMENT TO WOOD FRAME STRUCTURE
5/16" X 3" LAG SCREWS STARTING 6" FROM ENDS THEN 24" O.C. (1 1/2" EMBEDMENT)

2 X 6 VERTICAL JAMB ATTACHMENT TO 2,000 PSI CONCRETE
HILTI KWIK BOLT 3/8" X 4" STARTING 6" FROM ENDS THEN 24" O.C. (2 1/2" EMBEDMENT)
HILTI SLEEVE ANCHOR 3/8" X 2-3/4" STARTING 6" FROM ENDS THEN 24" O.C. (1 1/4" EMBEDMENT)
ITW/RAMSET REDHEAD (TRU-BOLT) 3/8" X 4" STARTING 6" FROM ENDS THEN 24" O.C. (2 1/2" EMBEDMENT)

2 X 6 VERTICAL JAMB ATTACHMENT TO HOLLOW C-90 BLOCK
SIMPSON 1/4" X 3" TITEN SCREWS STARTING 6" FROM ENDS, USE PAIRS OF FASTENERS (3" APART) AT 16" O.C. (1 1/2" EMBEDMENT)
HILTI 1/4" X 2-3/4" KWIK-CON II+ SCREWS STARTING 6" FROM ENDS, USE PAIRS OF FASTENERS (3" APART) AT 16" O.C. (1 1/4" EMBEDMENT)

2 X 6 VERTICAL JAMB ATTACHMENT TO GROUTED C-90 BLOCK (2000 PSI GROUT)
HILTI SLEEVE ANCHOR 3/8" X 2-3/4" STARTING 6" FROM ENDS THEN 24" O.C. (1 1/4" EMBEDMENT)
(OR, USE FASTENERS FOR HOLLOW C-90 BLOCK)

*LAGS AND BOLTS CAN BE COUNTERSUNK TO PROVIDE A FLUSH MOUNTING SURFACE.
*PREPARATION OF WOOD JAMBS BY OTHERS

REV	DESCRIPTION OF REVISIONS	DATE	BY

MAX SIZE 9' x 14'
DESIGN LOADS +38.0 PSF -44.9 PSF
TEST LOADS +57.0 PSF -67.4 PSF
LARGE MISSILE IMPACT RESISTANCE

Thomas L. Shelmerdine, PE (TX PE #85829)
Structural Solutions, PA (TX Firm #F-004063)

TX

Amarr
ENTREMATIC

MODEL P500 AMARR OLYMPUS 500
MODEL D500 AMARR DESIGNERS CHOICE DC-500

SIZE	DRAWN BY	RLR	DATE	02/06/18	DRAWING NUMBER
B	CHECKED BY	RLR	DATE	02/06/18	IRC-P509-155-15-1

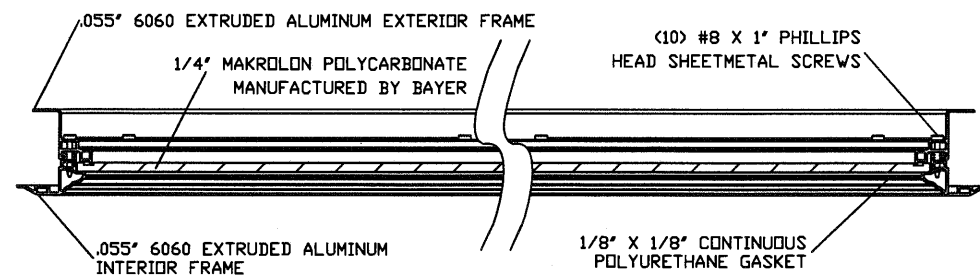
ENTREMATIC
165 CARRIAGE COURT WINSTON-SALEM, N.C. 27105

SHEET 2 OF 3

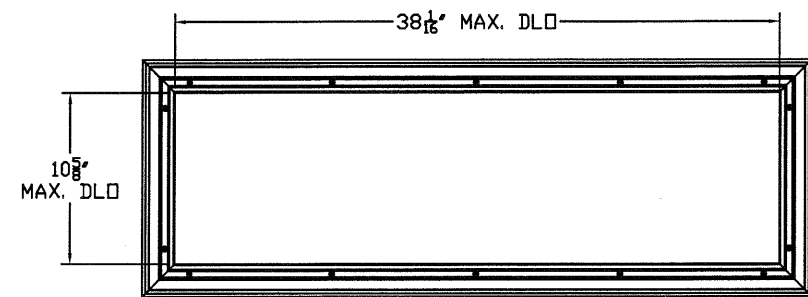
5921-G W. Friendly Ave., Greensboro, NC 27410

TABLE 2

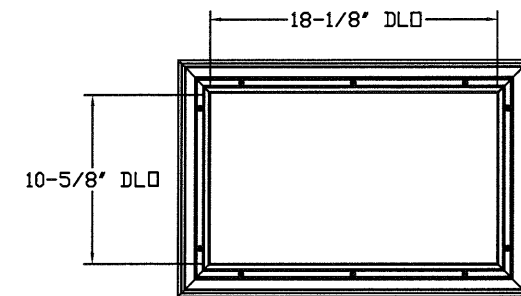
DOOR HEIGHT	SECTION HEIGHTS							
	Btm	#2	#3	#4	#5	#6	#7	#8
6' 0"	18"	18"	18"	18"				
6' 6"	21"	18"	18"	21"				
7' 0"	21"	21"	21"	21"				
7' 6"	18"	18"	18"	18"	18"			
8' 0"	21"	18"	18"	18"	21"			
8' 6"	21"	21"	21"	18"	21"			
9' 0"	18"	18"	18"	18"	18"	18"		
9' 6"	21"	18"	18"	18"	18"	21"		
10' 0"	21"	21"	21"	18"	18"	21"		
10' 6"	21"	21"	21"	21"	21"	21"		
11' 0"	21"	18"	18"	18"	18"	18"	21"	
11' 6"	21"	21"	21"	18"	18"	18"	21"	
12' 0"	21"	21"	21"	21"	21"	18"	21"	
12' 6"	21"	18"	18"	18"	18"	18"	18"	21"
13' 0"	21"	21"	21"	18"	18"	18"	18"	21"
13' 6"	21"	21"	21"	21"	21"	18"	18"	21"
14' 0"	21"	21"	21"	21"	21"	21"	21"	21"



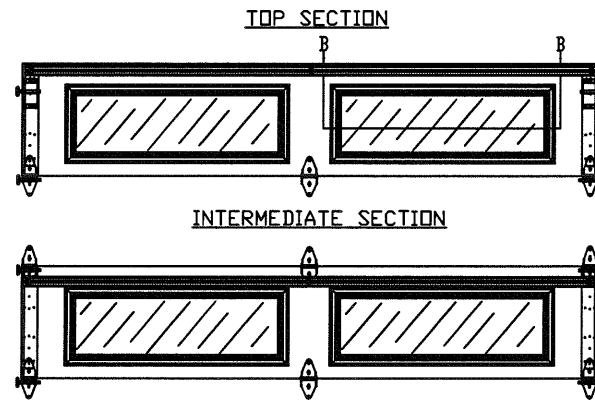
SECTION B-B IMPACT WINDOW DETAIL
N.T.S.



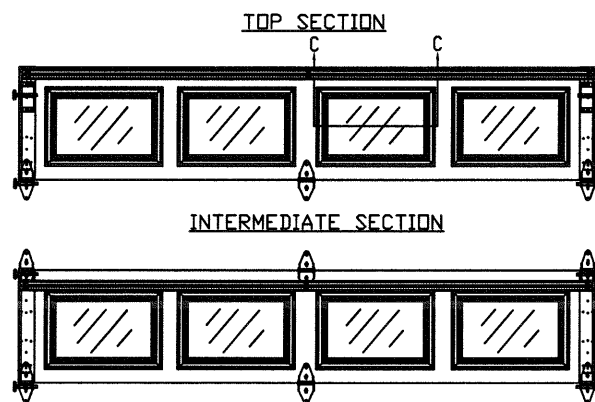
LONG PANEL GLAZING FASTENER DETAIL
N.T.S.



SHORT PANEL GLAZING FASTENER DETAIL
N.T.S.



OPTIONAL LONG PANEL GLAZED SECTION STRUT AND STILE LAYOUT
N.T.S.



OPTIONAL SHORT PANEL GLAZED SECTION STRUT AND STILE LAYOUT
N.T.S.

TOP FIXTURE REINFORCEMENT ILLUSTRATION

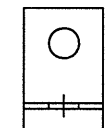
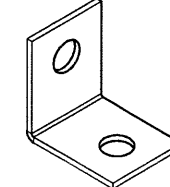
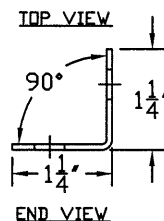
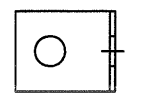
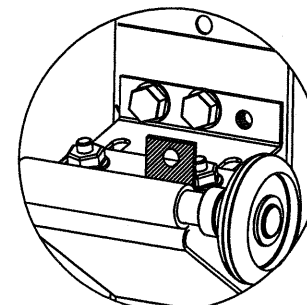


TABLE 3

Section Width (ft)	Panel Type	Center Stile Location (Measured from Left Edge)	
		1st (in)	2nd (in)
6' 0"	Short	24.406	47.594
7' 0"	Short	29.200	54.800
7' 2"	Short	30.200	55.800
7' 4"	Short	31.200	56.800
7' 6"	Short	32.200	57.800
7' 6"	Long	45.000	
7' 8"	Short	32.200	60.000
7' 8"	Long	46.000	
7' 10"	Short	33.000	61.000
7' 10"	Long	47.000	
8' 0"	Short	48.000	
8' 0"	Long	48.000	
8' 2"	Short	49.000	
8' 2"	Long	49.000	
8' 4"	Short	50.000	
8' 4"	Long	50.000	
8' 6"	Short	51.000	
8' 6"	Long	51.000	
8' 8"	Short	52.000	
8' 8"	Long	52.000	
8' 10"	Short	53.000	
8' 10"	Long	53.000	
9' 0"	Short	54.000	
9' 0"	Long	54.000	

REV	DESCRIPTION OF REVISIONS	DATE	BY

MAX SIZE 9' x 14'
 DESIGN LOADS +38.0 PSF -44.9 PSF
 TEST LOADS +57.0 PSF -67.4 PSF
 LARGE MISSILE IMPACT RESISTANCE

Thomas L. Shelmerdine, PE (TX PE #85829)
 Structural Solutions, PA (TX Firm #F-004063)

STATE OF TEXAS
 THOMAS L. SHELMERDINE
 85829
 LICENSED PROFESSIONAL ENGINEER
 TX

Amarr
 ENTREMATIC

MODEL P500 AMARR OLYMPUS 500
 MODEL D500 AMARR DESIGNERS CHOICE DC-500

SIZE	DRAWN BY RLR	DATE 02/06/18	DRAWING NUMBER
B	CHECKED BY RLR	DATE 02/06/18	RC-P509-155-15-1

ENTREMATIC
 165 CARRIAGE COURT WINSTON-SALEM, N.C. 27105

5921-G.W. Friendly Ave., Greensboro, NC 27410

SHEET 3 OF 3