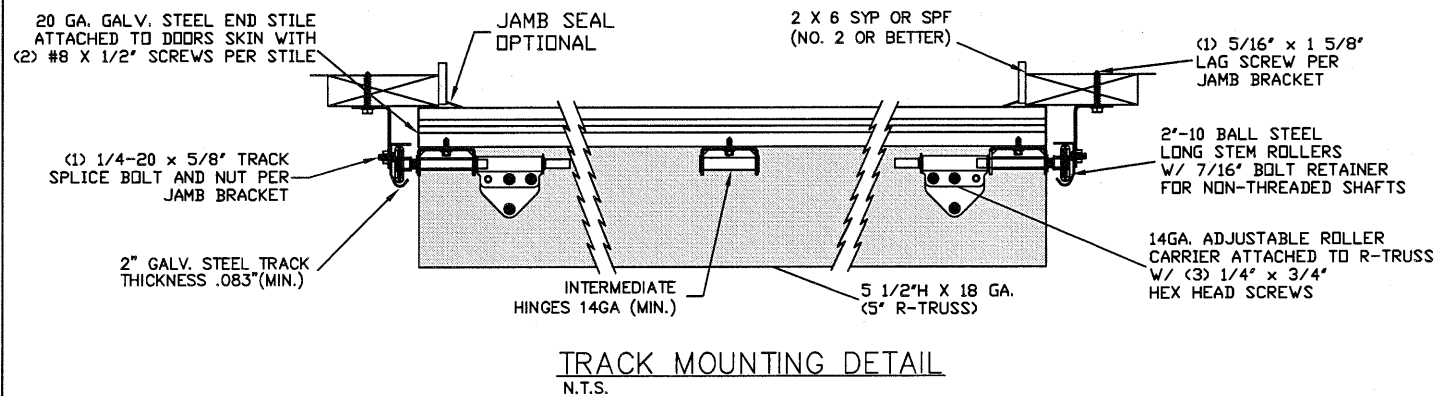
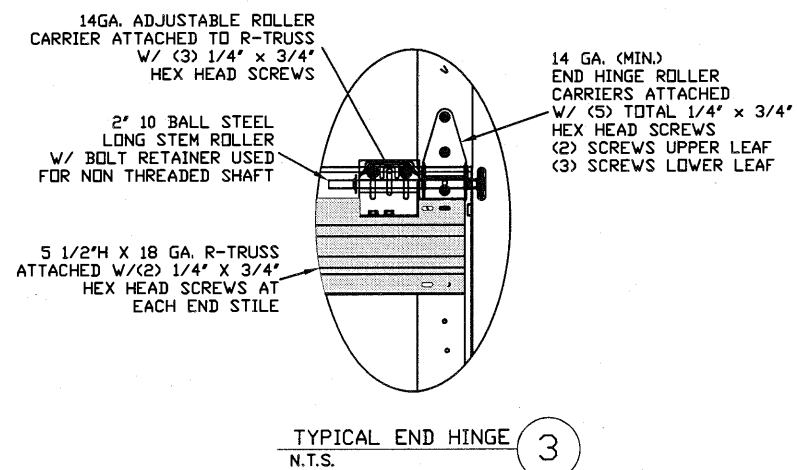
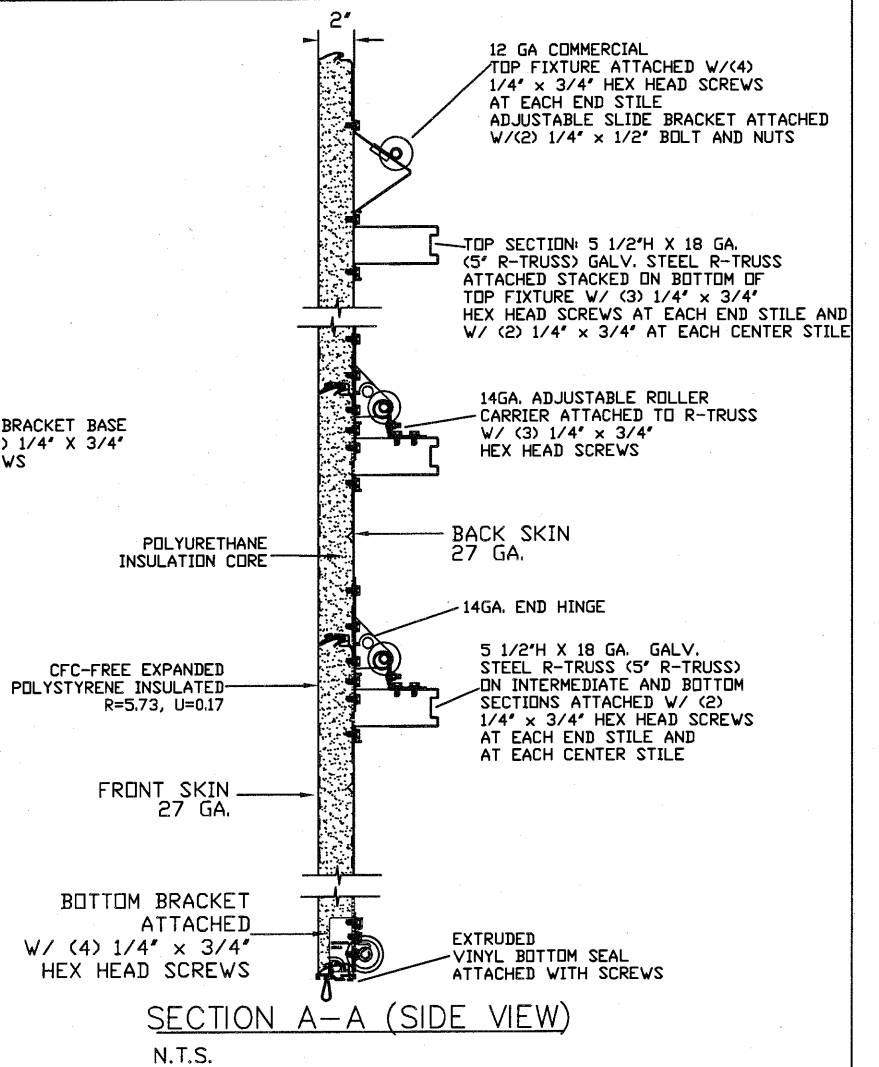


SLIDE LOCK ENGAGES INTO VERTICAL TRACK ON BOTH SIDES (SNAP LATCH, OR LOCK BAR OPTIONAL) ATTACH W/ (2) 1/4" X 3/4" HEX HEAD SCREWS



LARGE MISSILE
IMPACT RESISTANT

THE METHOD OF TESTING WAS IN SUBSTANTIAL CONFORMANCE WITH THE PROCEDURE DESCRIBED IN ASTM E330, E1886, E1996, F588 AND DASMA 108, 115. THE PRESSURES SHOWN ON THE DRAWINGS WERE CALCULATED USING ASCE 7-98/02/05 WITH THE FOLLOWING PARAMETERS (5 FEET OF DOOR WIDTH IN THE END ZONE, ROOF AT ANY SLOPE, AND I=1.0):

WIND SPEED (MPH)	155	141	134	128	123
EXPOSURE LEVEL	B	C	C	D	D
MEAN ROOF HEIGHT	30'	15'	25'	15'	25'

REV	DESCRIPTION OF REVISIONS	DATE	BY

MAX SIZE 16' x 14'

DESIGN LOADS
+36.4 PSF
-41.4 PSF

TEST LOADS
(1.5 x DESIGN LOADS)
+54.6 PSF
-62.1 PSF

Thomas L. Shelmerdine, PE (TX PE #85829)
Structural Solutions, PA (TX Firm #040603)

STATE OF TEXAS
THOMAS L. SHELMERDINE
85829
LICENSED PROFESSIONAL ENGINEER
TX

5921-G W. Friendly Ave., Greensboro, NC 27410

ENTRE/MATIC

165 CARRIAGE COURT WINSTON-SALEM, N.C. 27105

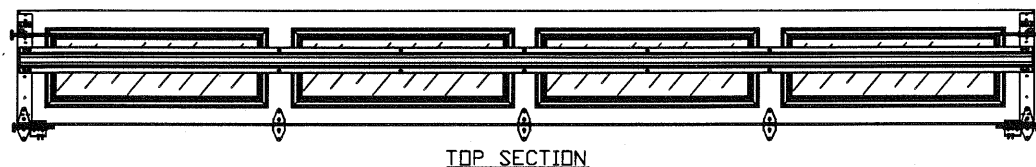
**MODEL C500 (CLAMSHELL)
AMARR OLYMPUS**

SIZE	DRAWN BY	RLR	DATE	01/13/16	DRAWING NUMBER
B	CHECKED BY	RLR	DATE	01/13/16	IRC-C516-155-26-1

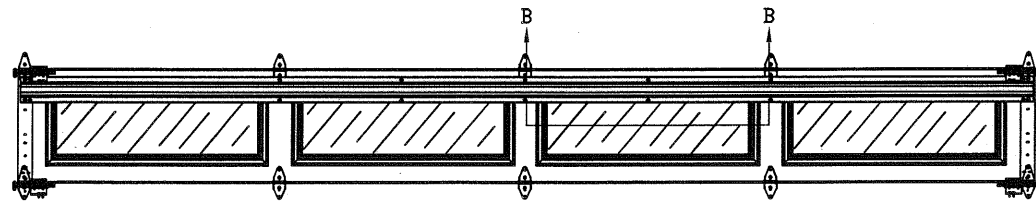
SHEET 1 OF 3

OPTIONAL SHORT AND LONG PANEL GLAZING LAYOUTS

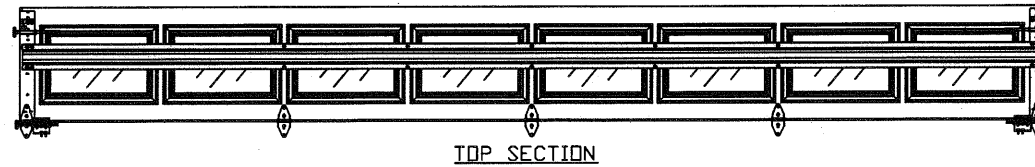
N.T.S.



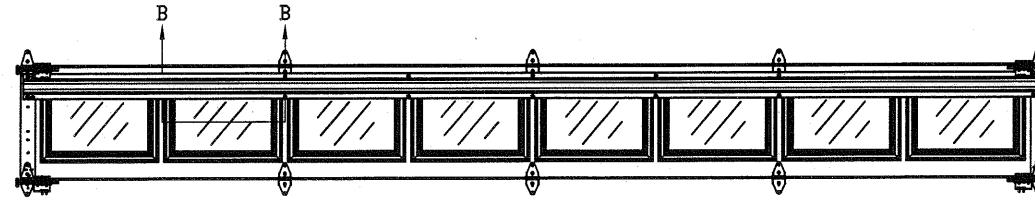
TOP SECTION



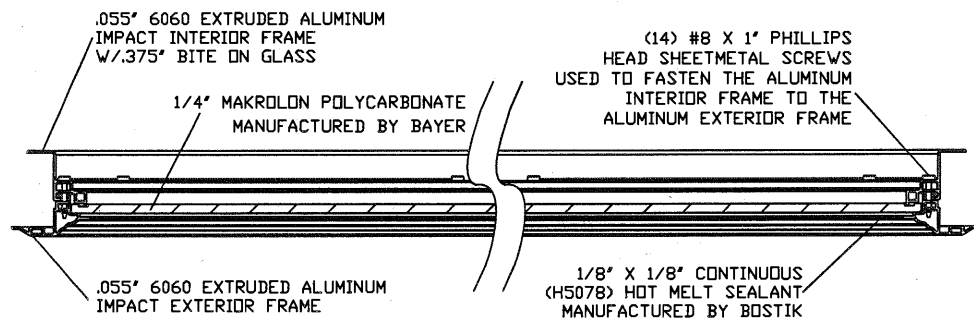
INTERMEDIATE SECTION



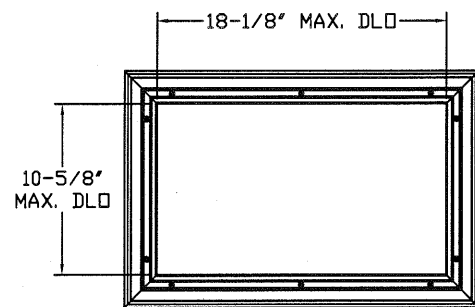
TOP SECTION



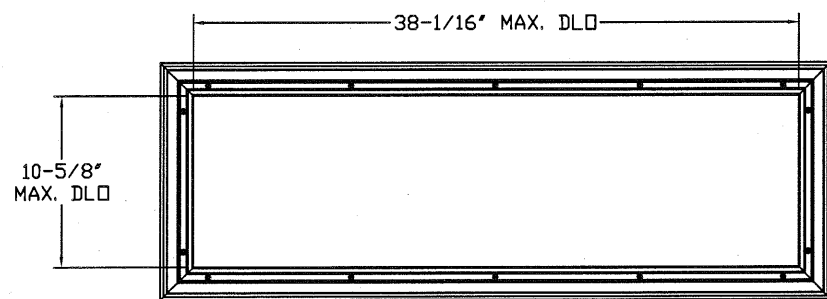
INTERMEDIATE SECTION



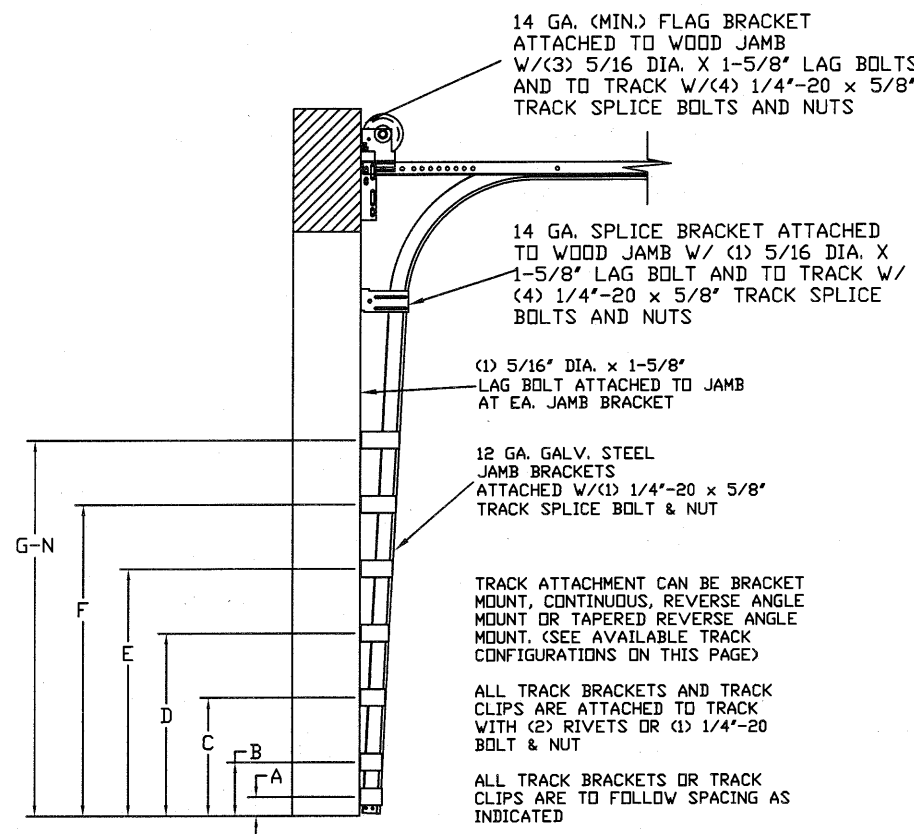
SECTION B-B IMPACT WINDOW DETAIL
N.T.S.



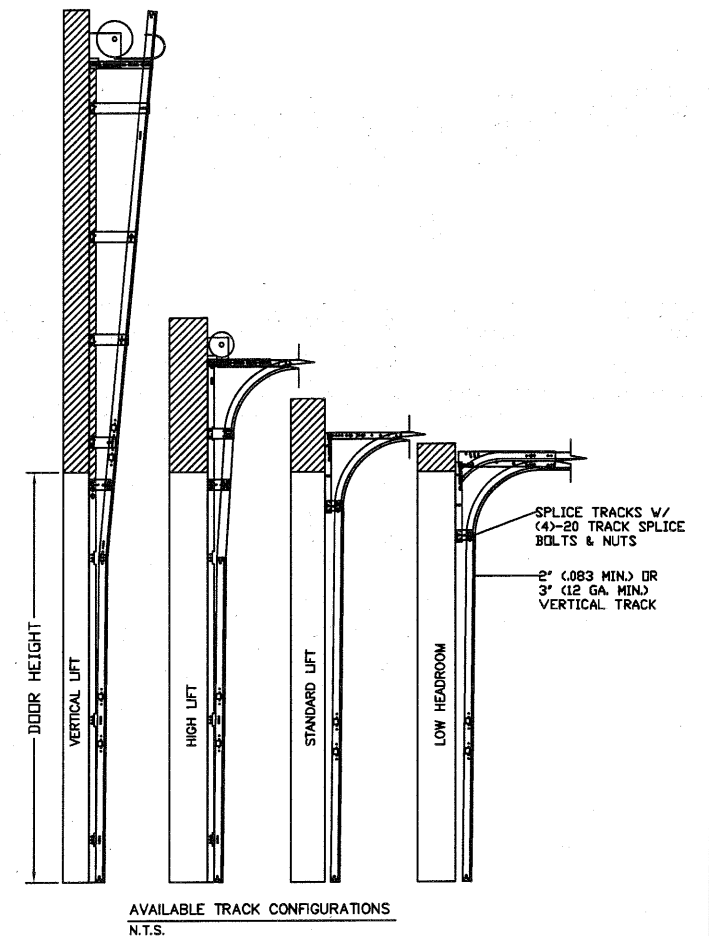
SHORT PANEL IMPACT GLAZING FASTENER DETAIL
N.T.S.



LONG PANEL IMPACT GLAZING FASTENER DETAIL
N.T.S.



TRACK CONFIGURATION FOR UP TO 14' TALL DOORS
SEE TABLE 1



AVAILABLE TRACK CONFIGURATIONS
N.T.S.

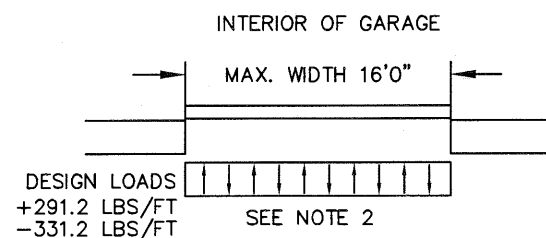
TRACK ATTACHMENT CAN BE BRACKET MOUNT, CONTINUOUS, REVERSE ANGLE MOUNT OR TAPERED REVERSE ANGLE MOUNT. (SEE AVAILABLE TRACK CONFIGURATIONS ON THIS PAGE)

ALL TRACK BRACKETS AND TRACK CLIPS ARE ATTACHED TO TRACK WITH (2) RIVETS OR (1) 1/4"-20 BOLT & NUT

ALL TRACK BRACKETS OR TRACK CLIPS ARE TO FOLLOW SPACING AS INDICATED

SPECIFICATIONS AND NOTES

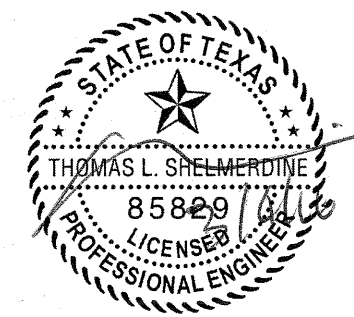
1. ALL THE LOAD FROM THE DOOR IS TRANSFERRED TO THE VERTICAL TRACK, FROM THE TRACK THE LOAD IS TRANSFERRED TO THE VERTICAL JAMBS. THE HORIZONTAL JAMB OR HEADER RECEIVES NO PORTION OF THE LOAD TRANSFERRED FROM THE DOOR.
2. EACH VERTICAL JAMBS RECEIVES MAXIMUM DESIGN LOADS OF: +291.2 LBS/FT & -331.2 LBS/FT
3. DOOR AND HARDWARE WILL BE DESIGNED, MANUFACTURED AND INSTALLED WITH STANDARDS AS SET FORTH BY DASMA.
4. DOOR SECTIONS SHALL BE 27 GA. (.015) MIN. EXTERIOR AND INTERIOR SKIN, ROLLED FORMED, W/ BAKED ON POLYESTER FINISH
5. DOORS UP TO 14'0" USE (1) 5.5" 18GA R-TRUSS PER SECTION.
6. SUPPORTING STRUCTURAL ELEMENTS SHALL BE DESIGNED BY A REGISTERED STRUCTURAL ENGINEER FOR WIND LOADS INDICATED ON THIS DRAWING IN ADDITION TO OTHER LOADINGS.



REV	DESCRIPTION OF REVISIONS	DATE	BY
-----	--------------------------	------	----

MAX SIZE
16' x 14'
DESIGN LOADS
+36.4 PSF
-41.4 PSF
TEST LOADS
(1.5 x DESIGN LOADS)
+54.6 PSF
-62.1 PSF

Thomas L. Shelmerdine, PE (TX PE #85829)
Structural Solutions, PA (TX Firm #F-004063)



TX

5921-G W. Friendly Ave., Greensboro, NC 27410

ENTRE/MATIC

165 CARRIAGE COURT WINSTON-SALEM, N.C. 27105

**MODEL C500 (CLAMSHELL)
AMARR OLYMPUS**

SIZE	DRAWN BY	RLR	DATE	01/13/16	DRAWING NUMBER
B	CHECKED BY	RLR	DATE	01/13/16	IRC-C516-155-26-1

SHEET 2 OF 3

WOOD JAMB ATTACHMENT TO STRUCTURE (OPTIONAL)

2 X 6 VERTICAL JAMB ATTACHMENT TO WOOD FRAME STRUCTURE
5/16" X 3" LAG SCREWS STARTING 6" FROM ENDS
THEN 16" O.C. (1 1/2" EMBEDMENT)

2 X 6 VERTICAL JAMB ATTACHMENT TO 2,000 PSI CONCRETE
HILTI KWIK BOLT 3/8" X 4" STARTING 6" FROM ENDS
THEN 24" O.C. (2 1/2" EMBEDMENT)

HILTI SLEEVE ANCHOR 3/8" X 2-3/4" STARTING 6" FROM ENDS
THEN 14" O.C. (1 1/4" EMBEDMENT)
ITW/RAMSET REDHEAD (TRU-BOLT) 3/8" X 4" STARTING 6" FROM ENDS
THEN 24" O.C. (2 1/2" EMBEDMENT)

2 X 6 VERTICAL JAMB ATTACHMENT TO HOLLOW C-90 BLOCK
SIMPSON 1/4" X 3" TITEN SCREWS STARTING 6" FROM ENDS,
USE PAIRS OF FASTENERS (3" APART)
AT 8" O.C. (1 1/2" EMBEDMENT)

HILTI 1/4" X 2-3/4" KWIK-CON II+ SCREWS STARTING 6" FROM ENDS,
USE PAIRS OF FASTENERS (3" APART) AT 8" O.C. (1 1/4" EMBEDMENT)

2 X 6 VERTICAL JAMB ATTACHMENT TO GROUTED C-90 BLOCK (2000 PSI GROUT)
HILTI SLEEVE ANCHOR 3/8" X 2-3/4" STARTING 6" FROM ENDS
THEN 16" O.C. (1 1/4" EMBEDMENT)
(OR, USE FASTENERS FOR HOLLOW C-90 BLOCK)

*LAGS AND BOLTS CAN BE COUNTERSUNK TO PROVIDE A FLUSH MOUNTING SURFACE.
*PREPARATION OF WOOD JAMBS BY OTHERS

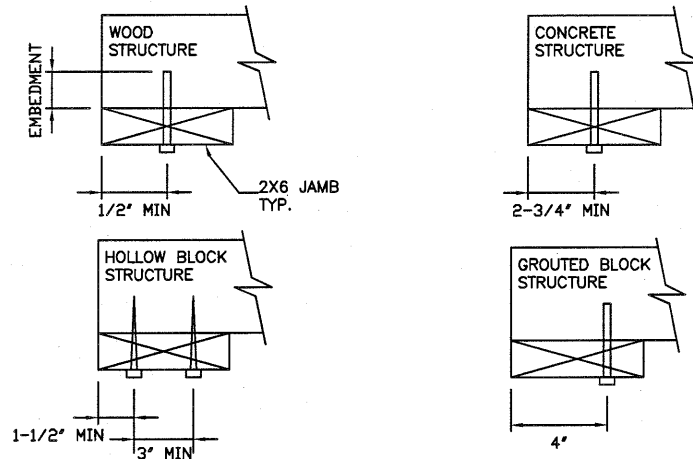


TABLE 1

HEIGHT	TRACK ATTACHMENT														SPLICE
	A	B	C	D	E	F	G	H	I	J	K	L	M	N	
6' 0"	3.5"	10"	22"	34"	46"	58"									64"
6' 6"	3.5"	10"	22"	34"	46"	58"									70"
7' 0"	3.5"	10"	22"	34"	46"	58"	70"								76"
7' 6"	3.5"	10"	22"	34"	46"	58"	70"								82"
8' 0"	3.5"	10"	22"	34"	46"	58"	70"	82"							88"
8' 6"	3.5"	10"	22"	34"	46"	58"	70"	82"							94"
9' 0"	3.5"	10"	22"	34"	46"	58"	70"	82"	94"						100"
9' 6"	3.5"	10"	22"	34"	46"	58"	70"	82"	94"						106"
10' 0"	3.5"	10"	22"	34"	46"	58"	70"	82"	94"	106"					112"
10' 6"	3.5"	10"	22"	34"	46"	58"	70"	82"	94"	106"					118"
11' 0"	3.5"	10"	22"	34"	46"	58"	70"	82"	94"	106"	118"				124"
11' 6"	3.5"	10"	22"	34"	46"	58"	70"	82"	94"	106"	118"				130"
12' 0"	3.5"	10"	22"	34"	46"	58"	70"	82"	94"	106"	118"	130"			136"
12' 6"	3.5"	10"	22"	34"	46"	58"	70"	82"	94"	106"	118"	130"			142"
13' 0"	3.5"	10"	22"	34"	46"	58"	70"	82"	94"	106"	118"	130"	142"		148"
13' 6"	3.5"	10"	22"	34"	46"	58"	70"	82"	94"	106"	118"	130"	142"		154"
14' 0"	3.5"	10"	22"	34"	46"	58"	70"	82"	94"	106"	118"	130"	142"	154"	160"

ALL TRACK ATTACHMENT SPACING +/- 2" ALLOWED WITH SYP OR SPF NO. 2 OR BETTER ONLY

TABLE 2

Section	Panel Type	Center Stile Locations (Measured from Left Edge)			
		1st (in)	2st (in)	3rd (in)	4th (in)
13' 10"	Short	57.16	82.94	108.71	
14' 0"	Short	57.76	83.94	110.11	
14' 2"	Short	58.85	84.94	111.41	
14' 4"	Short	59.16	85.94	112.71	
14' 6"	Short	59.86	86.94	114.01	
14' 8"	Short	60.56	87.94	115.31	
14' 8"	Long	44.81	88.00	131.19	
14' 10"	Short	61.26	88.94	116.61	
14' 10"	Long	45.60	89.00	132.40	
15' 0"	Short	61.94	89.94	117.94	
15' 0"	Long	46.60	90.00	133.40	
15' 2"	Short	62.66	90.94	119.21	
15' 2"	Long	47.60	91.00	134.40	
15' 4"	Short	53.60	79.20	104.80	130.40
15' 4"	Long	47.25	92.00	136.75	
15' 6"	Short	46.62	93.00	139.38	
15' 6"	Long	47.60	93.00	138.40	
15' 8"	Short	47.62	94.00	140.38	
15' 8"	Long	48.60	94.00	139.40	
15' 10"	Short	48.62	95.00	141.38	
15' 10"	Long	49.17	95.00	140.83	
16' 0"	Short	49.62	96.00	142.38	
16' 0"	Long	50.60	96.00	141.40	

REV	DESCRIPTION OF REVISIONS	DATE	BY

MAX SIZE
16' x 14'

DESIGN LOADS
+36.4 PSF
-41.4 PSF

TEST LOADS
(1.5 x DESIGN LOADS)
+54.6 PSF
-62.1 PSF

Thomas L. Shelmerdine, PE (TX PE #85829)
Structural Solutions, PA (TX Firm #004063)

STATE OF TEXAS
THOMAS L. SHELMERDINE
85829
LICENSED PROFESSIONAL ENGINEER
TX

5921-G W. Friendly Ave., Greensboro, NC 27410

ENTRE/MATIC
165 CARRIAGE COURT WINSTON-SALEM, N.C. 27105

**MODEL C500 (CLAMSHELL)
AMARR OLYMPUS**

SIZE	DRAWN BY	RLR	DATE	01/13/16	DRAWING NUMBER
B	CHECKED BY	RLR	DATE	01/13/16	IRC-C516-155-26-1

SHEET 3 OF 3