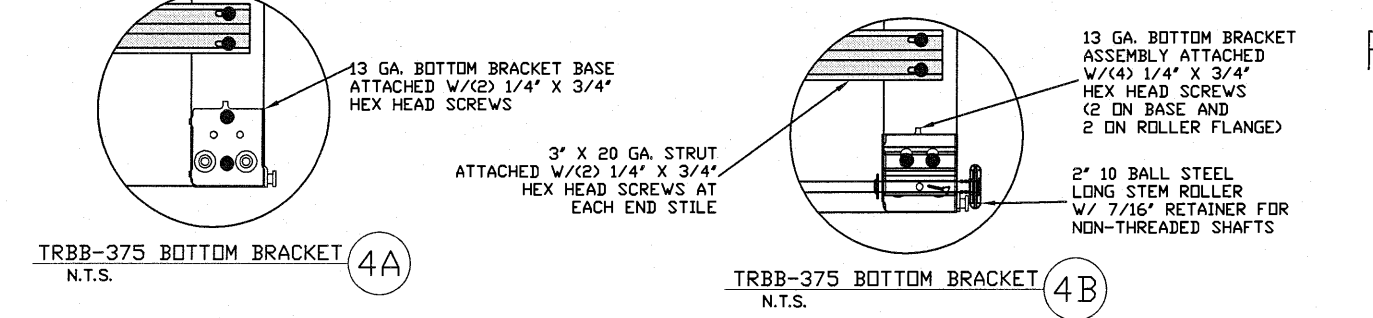
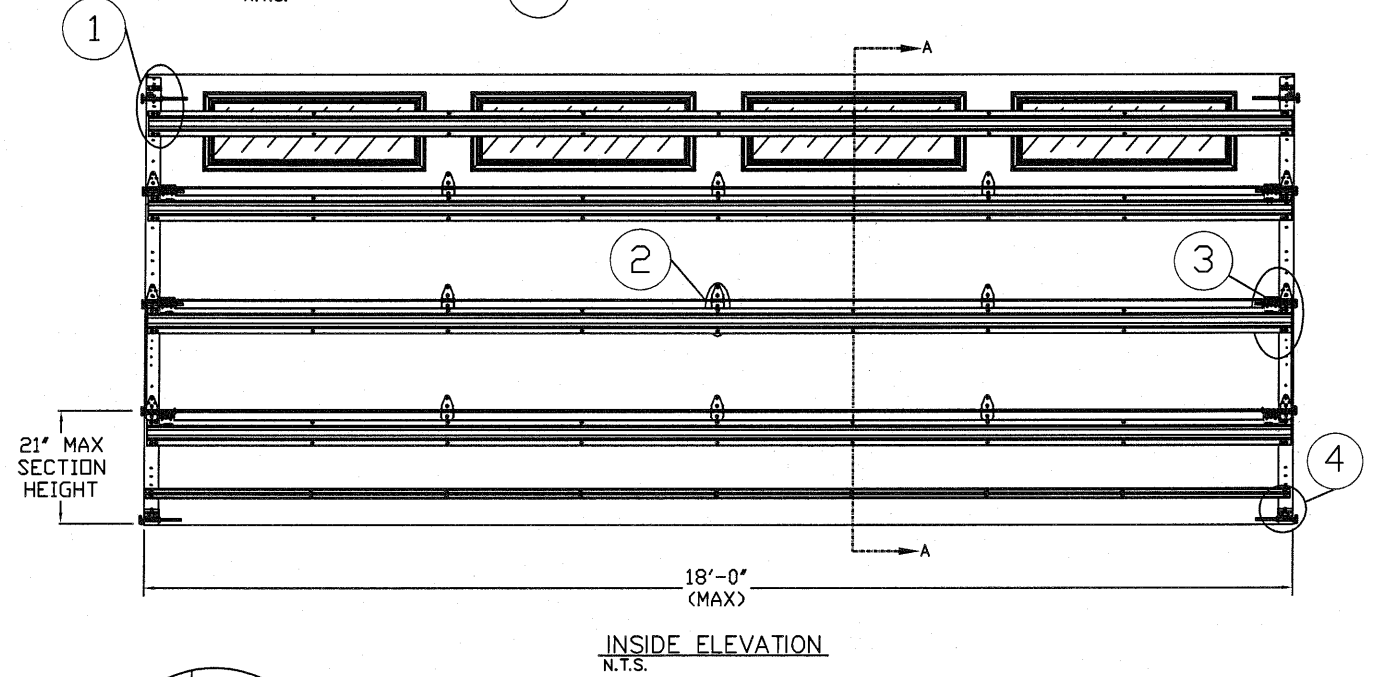


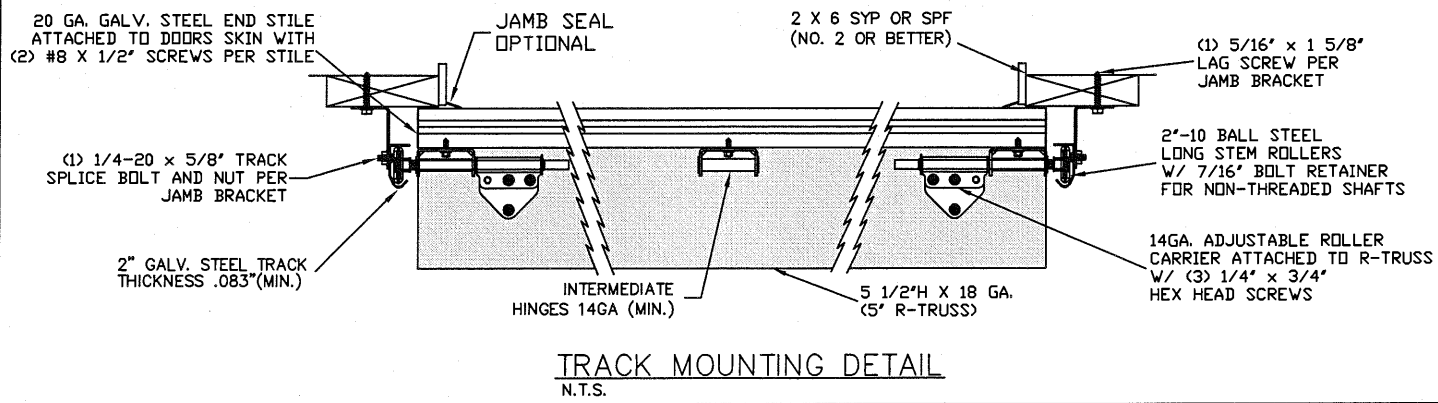
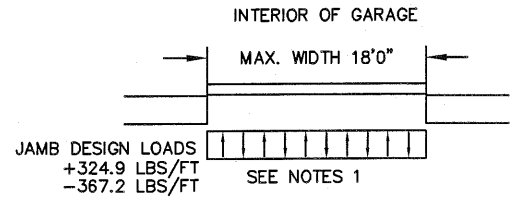
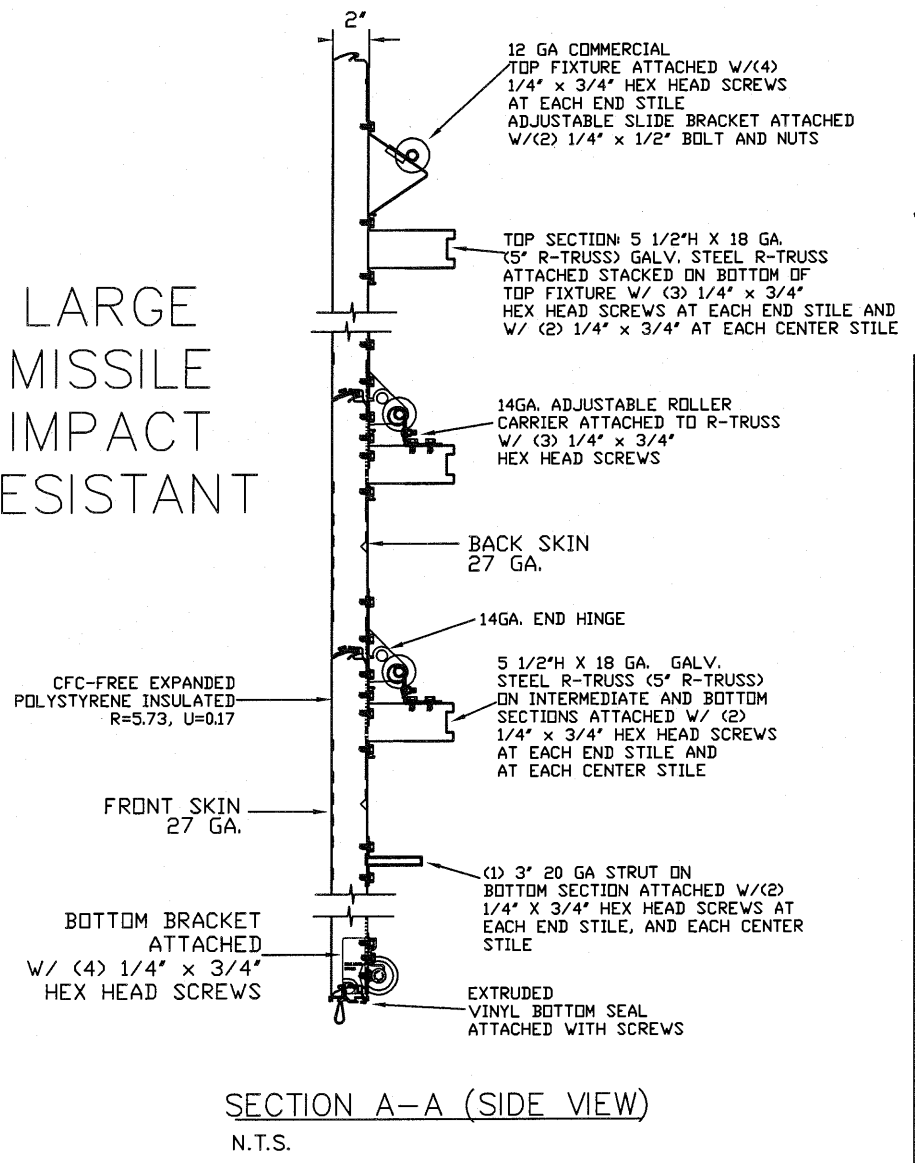
THE METHOD OF TESTING WAS IN SUBSTANTIAL CONFORMANCE WITH THE PROCEDURE DESCRIBED IN DASMA 108 & 115, ASTM E330, E1886, E1996, & F588. THE PRESSURES SHOWN ON THE DRAWINGS WERE CALCULATED USING ASCE 7-98/02/05 WITH THE FOLLOWING PARAMETERS (5 FEET OF DOOR WIDTH IN THE END ZONE, ROOF AT ANY SLOPE I=1.0):

| | | | | | |
|------------------|-----|-----|-----|-----|-----|
| WIND SPEED (MPH) | 155 | 141 | 134 | 128 | 123 |
| EXPOSURE LEVEL | B | C | C | D | D |
| MEAN ROOF HEIGHT | 30' | 15' | 25' | 15' | 25' |

- SPECIFICATIONS AND NOTES**
- DOORS AND HARDWARE WILL BE DESIGNED, MANUFACTURED AND INSTALLED WITH STANDARDS AS SET FORTH BY DASMA. EACH VERTICAL JAMBS RECEIVES MAXIMUM DESIGN LOADS OF: +324.9 LBS/FT & -367.2 LBS/FT
 - DOOR SECTIONS SHALL BE 27 GA. MIN. (.0151") ROLLED FORMED LIGHT COMMERCIAL QUALITY
 - SUPPORTING STRUCTURAL ELEMENTS SHALL BE DESIGNED BY A REGISTERED PROFESSIONAL ENGINEER FOR WIND LOADS INDICATED ON THIS DRAWING IN ADDITION TO OTHER LOADINGS.



LARGE MISSILE IMPACT RESISTANT



| REV | DESCRIPTION OF REVISIONS | DATE | BY |
|-----|--------------------------|------|----|
| | | | |

MAX SIZE 18' WIDTH 14' HEIGHT (DOOR HEIGHT SUBJECT TO WEIGHT LIMITATIONS)

DESIGN LOADS +36.1 PSF -40.8 PSF

TEST LOADS +54.2 PSF -61.2 PSF

Thomas L. Shelmerdine, PE (TX PE #85829) Structural Solutions, PA (TX Firm #F-004063)

STATE OF TEXAS

THOMAS L. SHELMEARDINE
 85829
 LICENSED PROFESSIONAL ENGINEER
 TX

Amarr
ENTRE/MATIC
 165 CARRIAGE COURT WINSTON-SALEM, N.C. 27105

MODEL #1600 LINCOLN 3000
MODEL #1650 HILLCREST 3000

| | | | | | |
|------|------------|-----|------|----------|-------------------|
| SIZE | DRAWN BY | RLR | DATE | 02/24/14 | DRAWING NUMBER |
| B | CHECKED BY | | DATE | | IRC-1618-155-26-1 |

SHEET 1 OF 3

TABLE 1

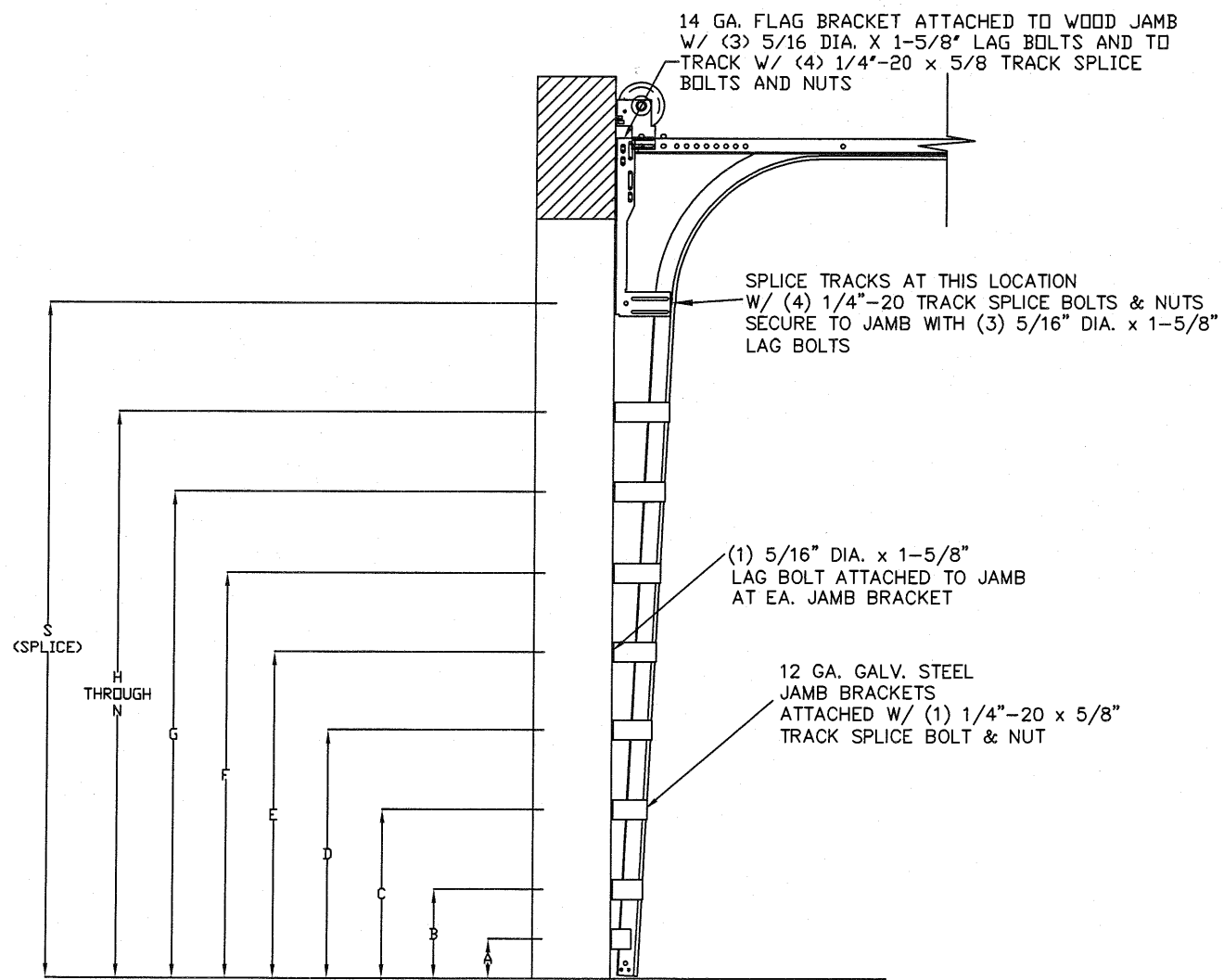
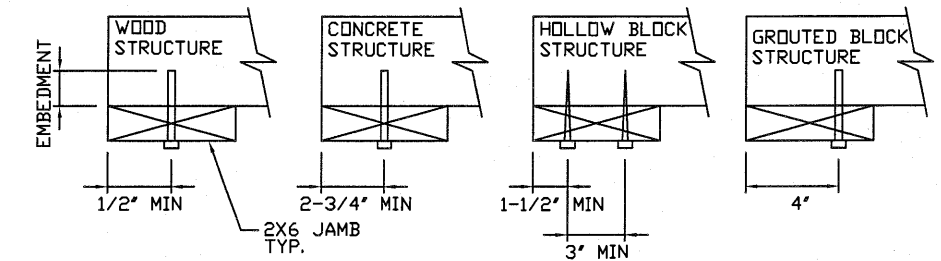
| HEIGHT | TRACK ATTACHMENT | | | | | | | | | | | | | | SPLICE | |
|--------|------------------|-----|-----|-----|-----|-----|-----|-----|-----|------|------|------|------|------|--------|------|
| | A | B | C | D | E | F | G | H | I | J | K | L | M | N | | |
| 6' 0" | 3.5" | 10" | 22" | 34" | 46" | 58" | | | | | | | | | | 64" |
| 6' 6" | 3.5" | 10" | 22" | 34" | 46" | 58" | | | | | | | | | | 70" |
| 7' 0" | 3.5" | 10" | 22" | 34" | 46" | 58" | 70" | | | | | | | | | 76" |
| 7' 6" | 3.5" | 10" | 22" | 34" | 46" | 58" | 70" | | | | | | | | | 82" |
| 8' 0" | 3.5" | 10" | 22" | 34" | 46" | 58" | 70" | 82" | | | | | | | | 88" |
| 8' 6" | 3.5" | 10" | 22" | 34" | 46" | 58" | 70" | 82" | | | | | | | | 94" |
| 9' 0" | 3.5" | 10" | 22" | 34" | 46" | 58" | 70" | 82" | 94" | | | | | | | 100" |
| 9' 6" | 3.5" | 10" | 22" | 34" | 46" | 58" | 70" | 82" | 94" | | | | | | | 106" |
| 10' 0" | 3.5" | 10" | 22" | 34" | 46" | 58" | 70" | 82" | 94" | 106" | | | | | | 112" |
| 10' 6" | 3.5" | 10" | 22" | 34" | 46" | 58" | 70" | 82" | 94" | 106" | | | | | | 118" |
| 11' 0" | 3.5" | 10" | 22" | 34" | 46" | 58" | 70" | 82" | 94" | 106" | 118" | | | | | 124" |
| 11' 6" | 3.5" | 10" | 22" | 34" | 46" | 58" | 70" | 82" | 94" | 106" | 118" | | | | | 130" |
| 12' 0" | 3.5" | 10" | 22" | 34" | 46" | 58" | 70" | 82" | 94" | 106" | 118" | 130" | | | | 136" |
| 12' 6" | 3.5" | 10" | 22" | 34" | 46" | 58" | 70" | 82" | 94" | 106" | 118" | 130" | | | | 142" |
| 13' 0" | 3.5" | 10" | 22" | 34" | 46" | 58" | 70" | 82" | 94" | 106" | 118" | 130" | 142" | | | 148" |
| 13' 6" | 3.5" | 10" | 22" | 34" | 46" | 58" | 70" | 82" | 94" | 106" | 118" | 130" | 142" | | | 154" |
| 14' 0" | 3.5" | 10" | 22" | 34" | 46" | 58" | 70" | 82" | 94" | 106" | 118" | 130" | 142" | 154" | | 160" |

ALL TRACK ATTACHMENT SPACING +/- 1" ALLOWED WITH SYP OR SPF NO. 2 OR BETTER ONLY

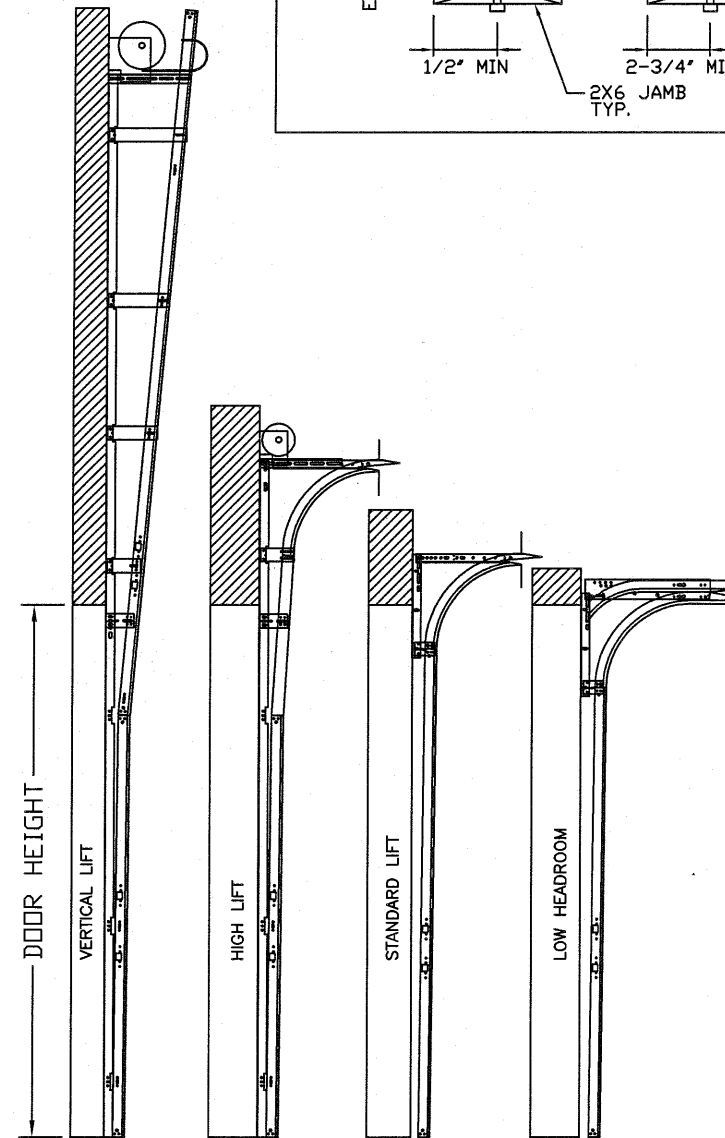
WOOD JAMB ATTACHMENT TO STRUCTURE

2 X 6 VERTICAL JAMB ATTACHMENT TO WOOD FRAME STRUCTURE
 5/16" X 3" LAG SCREWS STARTING 6" FROM ENDS THEN 14" O.C. (1 1/2" EMBEDMENT)
 2 X 6 VERTICAL JAMB ATTACHMENT TO 2,000 PSI CONCRETE
 HILTI KWIK BOLT 3/8" X 4" STARTING 6" FROM ENDS THEN 24" O.C. (2 1/2" EMBEDMENT)
 HILTI SLEEVE ANCHOR 3/8" X 2-3/4" STARTING 6" FROM ENDS THEN 12" O.C. (1 1/4" EMBEDMENT)
 ITW/RAMSET REDHEAD (TRU-BOLT) 3/8" X 4" STARTING 6" FROM ENDS THEN 24" O.C. (2 1/2" EMBEDMENT)
 2 X 6 VERTICAL JAMB ATTACHMENT TO HOLLOW C-90 BLOCK
 SIMPSON 1/4" X 3" TITEN SCREWS STARTING 6" FROM ENDS, USE PAIRS OF FASTENERS (3' APART) AT 8" O.C. (1 1/2" EMBEDMENT)
 HILTI 1/4" X 2-3/4" KWIK-CON II+ SCREWS STARTING 6" FROM ENDS, USE PAIRS OF FASTENERS (3' APART) AT 8" O.C. (1 1/4" EMBEDMENT)
 2 X 6 VERTICAL JAMB ATTACHMENT TO GROUTED C-90 BLOCK (2000 PSI GROUT)
 HILTI SLEEVE ANCHOR 3/8" X 2-3/4" STARTING 6" FROM ENDS THEN 16" O.C. (1 1/4" EMBEDMENT) (OR, USE FASTENERS FOR HOLLOW C-90 BLOCK)

*LAGS AND BOLTS CAN BE COUNTERSUNK TO PROVIDE A FLUSH MOUNTING SURFACE.
 *PREPARATION OF WOOD JAMBS BY OTHERS



SEE TABLE 1 FOR JAMB BRACKET SPACING
 TRACK CONFIGURATION FOR 6'6" UP TO 14' TALL DOORS



AVAILABLE TRACK CONFIGURATIONS
 N.T.S.

| REV | DESCRIPTION OF REVISIONS | DATE | BY |
|-----|--------------------------|------|----|
| | | | |

MAX SIZE
 18' WIDTH
 14' HEIGHT
 (DOOR HEIGHT SUBJECT TO WEIGHT LIMITATIONS)

DESIGN LOADS
 +36.1 PSF
 -40.8 PSF

TEST LOADS
 +54.2 PSF
 -61.2 PSF

Thomas L. Shelmerdine, PE (TX PE #85829)
 Structural Solutions, PA (TX Firm #004063)

STATE OF TEXAS
 THOMAS L. SHELMERDINE
 85829
 LICENSED PROFESSIONAL ENGINEER

TX

Amarr
 ENTRE/MATIC
 165 CARRIAGE COURT WINSTON-SALEM, N.C. 27105

MODEL #1600 LINCOLN 3000
 MODEL #1650 HILLCREST 3000

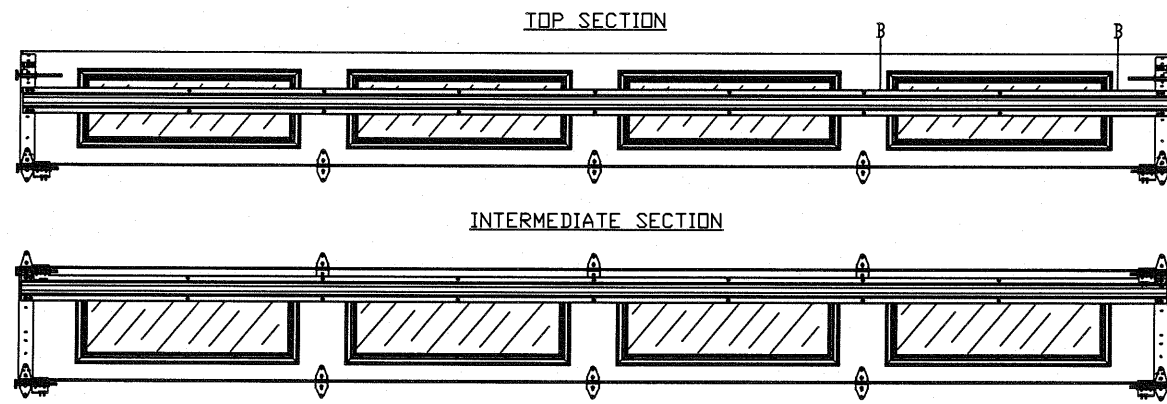
| | | | | | |
|------|------------|-----|------|----------|-------------------|
| SIZE | DRAWN BY | RLR | DATE | 02/24/14 | DRAWING NUMBER |
| B | CHECKED BY | | DATE | | IRC-1618-155-26-1 |

SHEET 2 OF 3

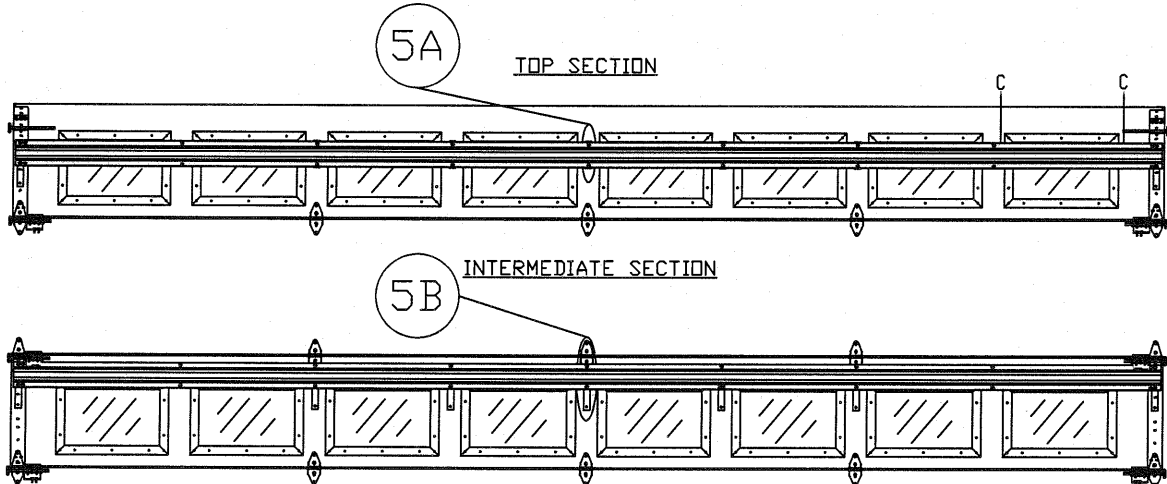
5921-G W. Friendly Ave., Greensboro, NC 27410

TABLE 2

| Section | Center Stile Locations (Measured from Left) | | |
|---------|------------------------------------------------|----------|----------|
| | Width (ft) | 1st (in) | 2st (in) |
| 16' 2 | 50.27 | 97.00 | 143.73 |
| 16' 4 | 51.27 | 98.00 | 144.73 |
| 16' 6 | 52.27 | 99.00 | 145.73 |
| 16' 8 | 51.34 | 100.00 | 148.66 |
| 16' 10 | 51.50 | 101.00 | 150.50 |
| 17' 0 | 53.34 | 102.00 | 150.66 |
| 17' 2 | 53.00 | 103.00 | 153.00 |
| 17' 4 | 54.00 | 104.00 | 154.00 |
| 17' 6 | 55.00 | 105.00 | 155.00 |
| 17' 8 | 54.80 | 106.00 | 157.20 |
| 17' 10 | 55.80 | 107.00 | 158.20 |
| 18' 0 | 57.25 | 108.00 | 158.75 |

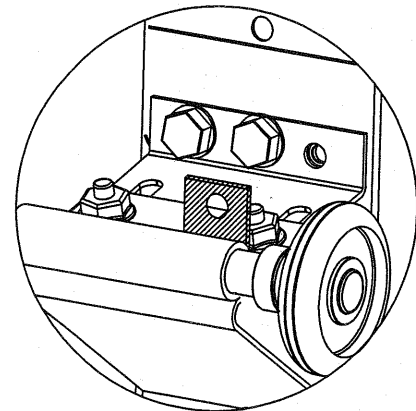


OPTIONAL LONG PANEL GLAZED SECTION R-TRUSS AND STILE LAYOUT
N.T.S.

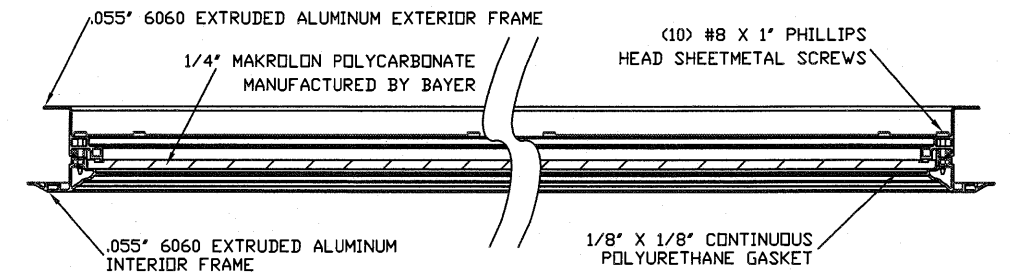
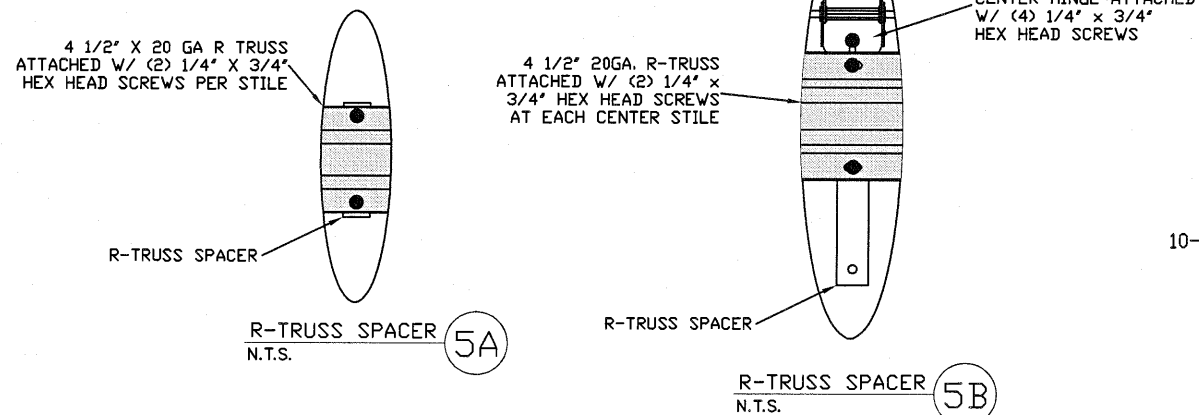
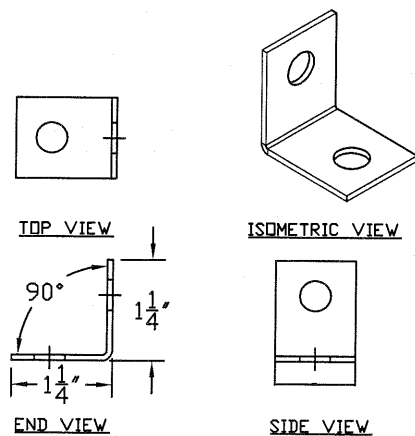


OPTIONAL SHORT PANEL GLAZED SECTION R-TRUSS AND STILE LAYOUT
N.T.S.

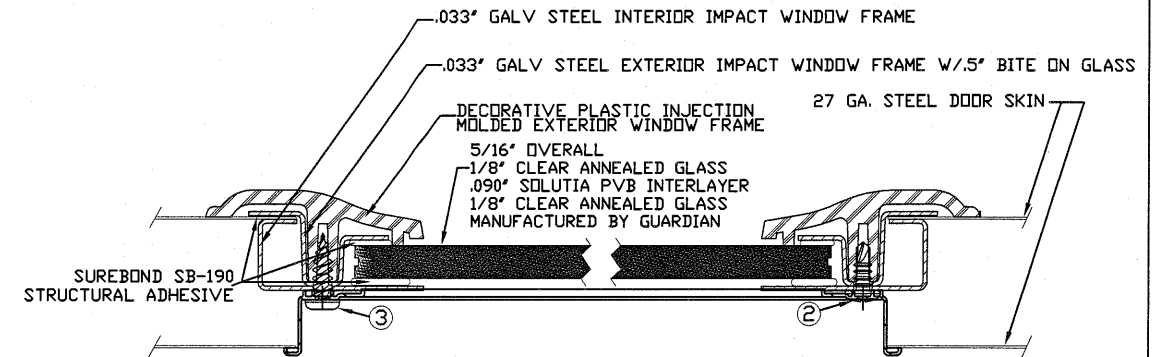
TOP FIXTURE REINFORCEMENT ILLUSTRATION



TOP FIXTURE ADDER PIECE

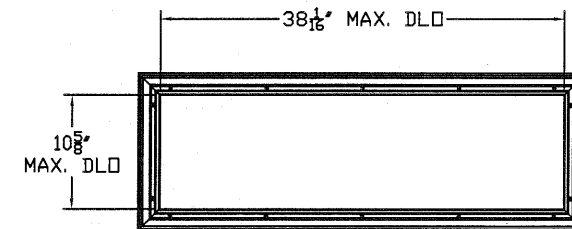


SECTION B-B IMPACT WINDOW DETAIL
N.T.S.

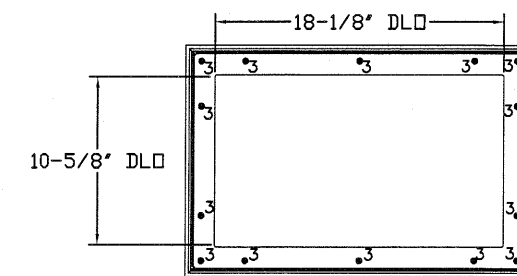


2. 3/16" X 1/2" SCREW - USED TO FASTEN THE STEEL EXTERIOR IMPACT WINDOW FRAME TO THE STEEL INTERIOR IMPACT WINDOW FRAME.
3. 11/64" X 1/2" SCREW - USED TO FASTEN DECORATIVE PLASTIC MOLDED WINDOW FRAME TO THE ASSEMBLY

SECTION C-C IMPACT WINDOW DETAIL
N.T.S.



LONG PANEL GLAZING FASTENER DETAIL
N.T.S.



IMPACT GLAZING FASTENER DETAIL
N.T.S.
GLAZING MEETS ASTM E1300-04

| REV | DESCRIPTION OF REVISIONS | DATE | BY |
|-----|--------------------------|------|----|
| | | | |

MAX SIZE
18' WIDTH
14' HEIGHT
(DOOR HEIGHT SUBJECT TO WEIGHT LIMITATIONS)

DESIGN LOADS
+36.1 PSF
-40.8 PSF

TEST LOADS
+54.2 PSF
-61.2 PSF

Thomas L. Shelmerdine, PE (TX PE #85829)
Structural Solutions, PA (TX Firm #F-004063)

STATE OF TEXAS
THOMAS L. SHELMEBDINE
85829
LICENSED PROFESSIONAL ENGINEER

TX
Amarr
ENTRE/MATIC
165 CARRIAGE COURT WINSTON-SALEM, N.C. 27105

MODEL #1600 LINCOLN 3000
MODEL #1650 HILLCREST 3000

| | | | | | |
|------|------------|-----|------|----------|-------------------|
| SIZE | DRAWN BY | RLR | DATE | 02/24/14 | DRAWING NUMBER |
| B | CHECKED BY | | DATE | | IRC-1618-155-26-1 |

SHEET 3 OF 3

5921-G W. Friendly Ave., Greensboro, NC 27410