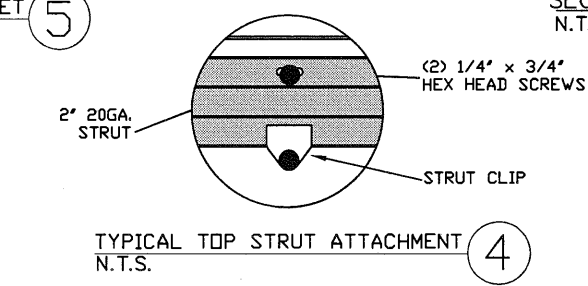
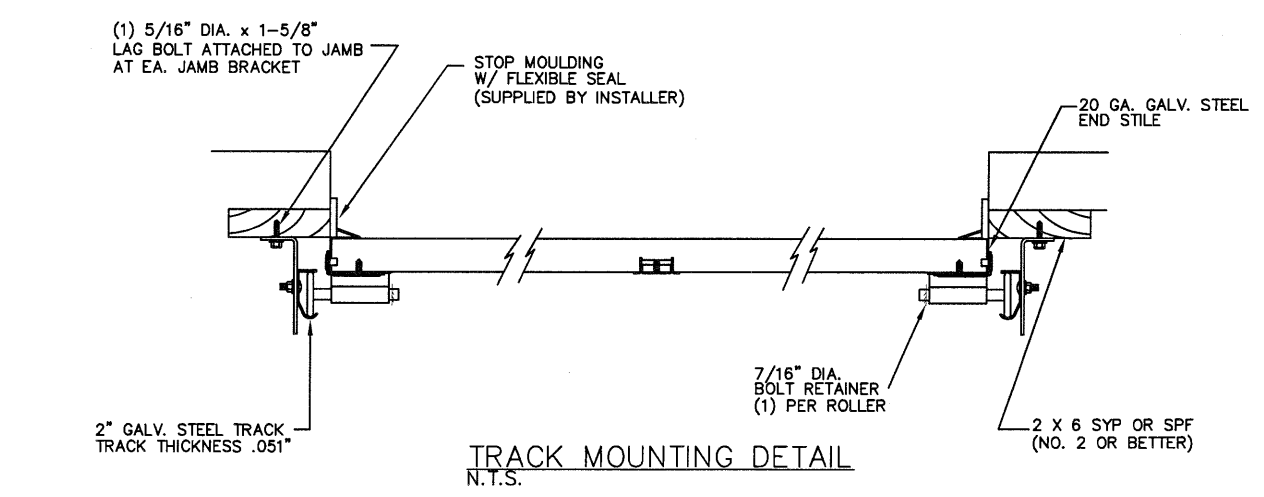


LARGE MISSILE IMPACT RESISTANT



THE METHOD OF TESTING WAS IN SUBSTANTIAL CONFORMANCE WITH THE PROCEDURE DESCRIBED IN DASMA 108-05 & 115-05, AND ASTM E330-02, E1886-05, E1996-09, & F588-07. THE PRESSURES SHOWN ON THE DRAWINGS WERE CALCULATED USING ASCE 7-05 WITH THE FOLLOWING PARAMETERS (3 FEET OF DOOR WIDTH IN THE END ZONE, ROOF AT ANY SLOPE I=1.0):

WIND SPEED (MPH)	130	118	112	107	103
EXPOSURE LEVEL	B	C	C	D	D
MEAN ROOF HEIGHT	30'	15'	25'	15'	25'

REV	DESCRIPTIONS OF REVISIONS	DATE	BY

MAX SIZE 9' x 14'

DESIGN LOADS +26.7 PSF -30.7 PSF

TEST LOADS +40.1 PSF -46.1 PSF

LARGE MISSILE IMPACT RESISTANCE

Thomas L. Shelmerdine, PE (TX PE #85829) Structural Solutions, PA (TX Firm #004063)

STATE OF TEXAS
THOMAS L. SHELMERDINE
85829
LICENSED PROFESSIONAL ENGINEER
TX

5921-G W. Friendly Ave., Greensboro, NC 27410

ENTREMATIC

165 CARRIAGE COURT WINSTON-SALEM, N.C. 27105

MODEL #1500 STRATFORD 3000
MODEL #1200 HERITAGE 3000
MODEL #1550 OAK SUMMIT 3000
SHORT, LONG, FLUSH & OAK SUMMIT PANELS

SIZE	DRAWN BY	RLR	DATE	10/16/14	DRAWING NUMBER
B	CHECKED BY		DATE		IRC-1509-130-15-1

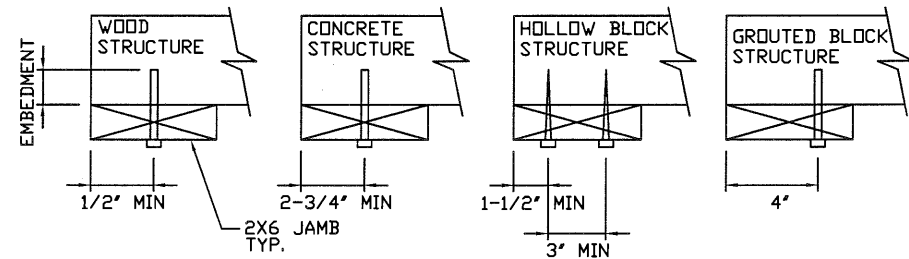
SHEET 1 OF 3

WOOD JAMB ATTACHMENT TO STRUCTURE

2 X 6 VERTICAL JAMB ATTACHMENT TO WOOD FRAME STRUCTURE
 5/16" X 3" LAG SCREWS STARTING 6" FROM ENDS THEN 24" O.C. (1 1/2" EMBEDMENT)
 2 X 6 VERTICAL JAMB ATTACHMENT TO 2,000 PSI CONCRETE
 HILTI KWIK BOLT 3/8" X 4" STARTING 6" FROM ENDS THEN 24" O.C. (2 1/2" EMBEDMENT)
 HILTI SLEEVE ANCHOR 3/8" X 2-3/4" STARTING 6" FROM ENDS THEN 24" O.C. (1 1/4" EMBEDMENT)
 ITW/RAMSET REDHEAD (TRU-BOLT) 3/8" X 4" STARTING 6" FROM ENDS THEN 24" O.C. (2 1/2" EMBEDMENT)
 2 X 6 VERTICAL JAMB ATTACHMENT TO HOLLOW C-90 BLOCK
 SIMPSON 1/4" X 3" TITEN SCREWS STARTING 6" FROM ENDS, USE PAIRS OF FASTENERS (3" APART) AT 24" O.C. (1 1/2" EMBEDMENT)
 HILTI 1/4" X 2-3/4" KWIK-CON II+ SCREWS STARTING 6" FROM ENDS, USE PAIRS OF FASTENERS (3" APART) AT 24" O.C. (1 1/4" EMBEDMENT)

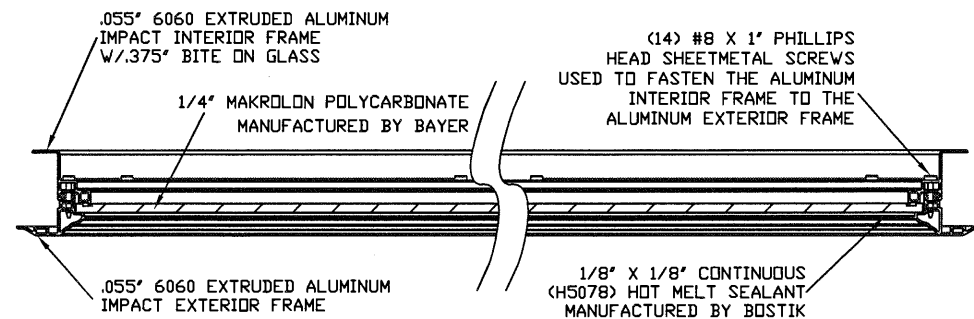
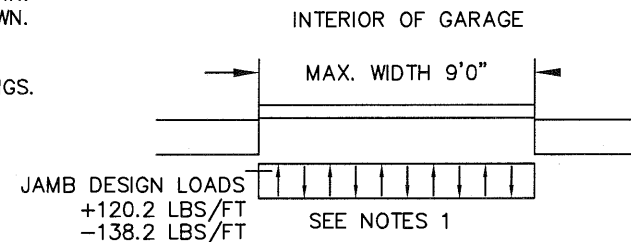
2 X 6 VERTICAL JAMB ATTACHMENT TO GROUTED C-90 BLOCK (2000 PSI GROUT)
 HILTI SLEEVE ANCHOR 3/8" X 2-3/4" STARTING 6" FROM ENDS THEN 24" O.C. (1 1/4" EMBEDMENT) (OR, USE FASTENERS FOR HOLLOW C-90 BLOCK)

*LAGS AND BOLTS CAN BE COUNTERSUNK TO PROVIDE A FLUSH MOUNTING SURFACE.
 *PREPARATION OF WOOD JAMBS BY OTHERS



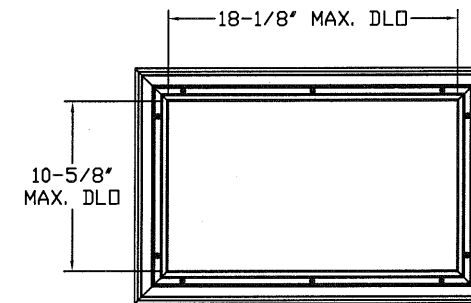
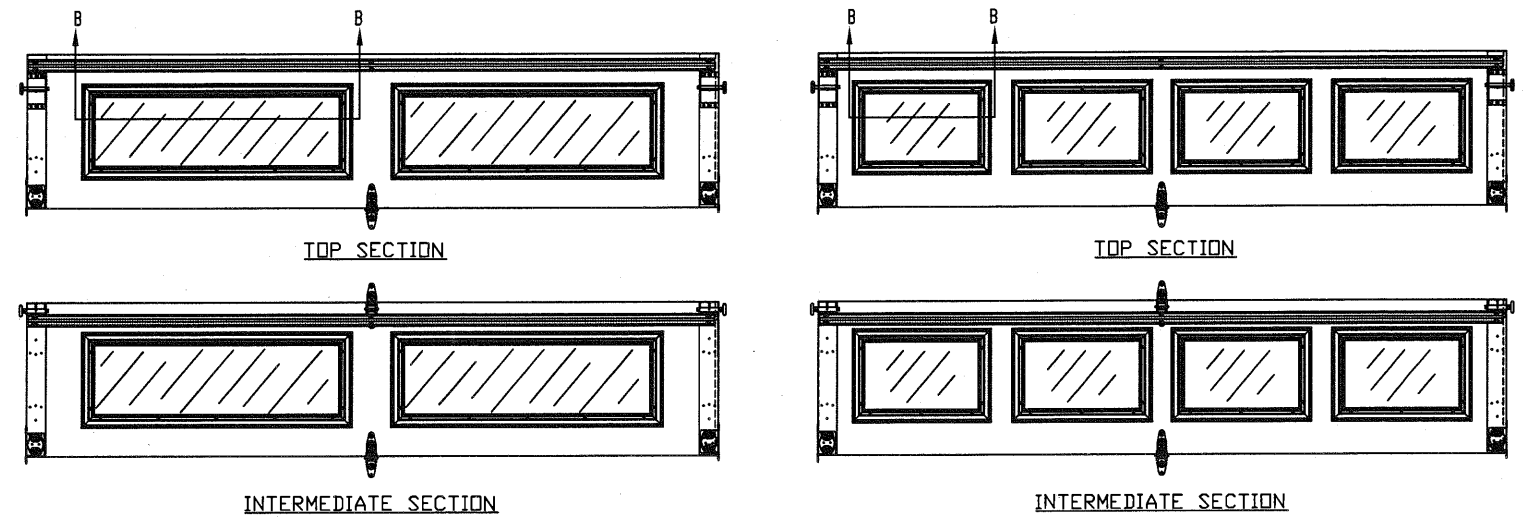
SPECIFICATIONS AND NOTES

- DOORS AND HARDWARE WILL BE DESIGNED, MANUFACTURED AND INSTALLED WITH STANDARDS AS SET FORTH BY DASMA.
- DOOR SECTIONS SHALL BE 27 GA. MIN. (.016") INTERIOR AND EXTERIOR ROLLED FORMED LIGHT COMMERCIAL QUALITY
- DOORS UP TO 7'0" HIGH CONSIST OF (4) SECTIONS AS SHOWN.
- DOORS UP TO 8'0" HIGH CONSIST OF (5) SECTIONS AS SHOWN.
- SUPPORTING STRUCTURAL ELEMENTS SHALL BE DESIGNED BY A REGISTERED PROFESSIONAL ENGINEER FOR WIND LOADS INDICATED ON THIS DRAWING IN ADDITION TO OTHER LOADINGS.

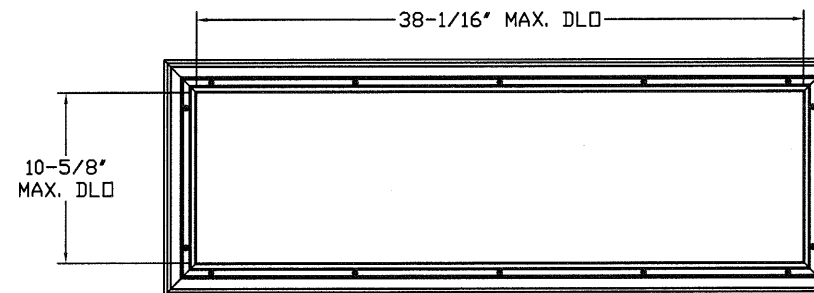


SECTION B-B IMPACT WINDOW DETAIL
 N.T.S.

OPTIONAL SHORT AND LONG PANEL GLAZING LAYOUTS



SHORT PANEL IMPACT GLAZING FASTENER DETAIL
 N.T.S.



LONG PANEL IMPACT GLAZING FASTENER DETAIL
 N.T.S.

REV	DESCRIPTIONS OF REVISIONS	DATE	BY
	MAX SIZE 9' x 14'		
	DESIGN LOADS +26.7 PSF -30.7 PSF		
	TEST LOADS +40.1 PSF -46.1 PSF		
	LARGE MISSILE IMPACT RESISTANCE		
	Thomas L. Shelmerdine, PE (TX PE #85829) Structural Solutions, PA (TX Firm #F-004063)		
	TX		

ENTRE/MATIC

165 CARRIAGE COURT WINSTON-SALEM, N.C. 27105

MODEL #1500 STRATFORD 3000
 MODEL #1200 HERITAGE 3000
 MODEL #1550 OAK SUMMIT 3000
 SHORT, LONG, FLUSH & OAK SUMMIT PANELS

SIZE	DRAWN BY	RLR	DATE	10/16/14	DRAWING NUMBER
B	CHECKED BY		DATE		IRC-1509-130-15-1
					SHEET 2 OF 3

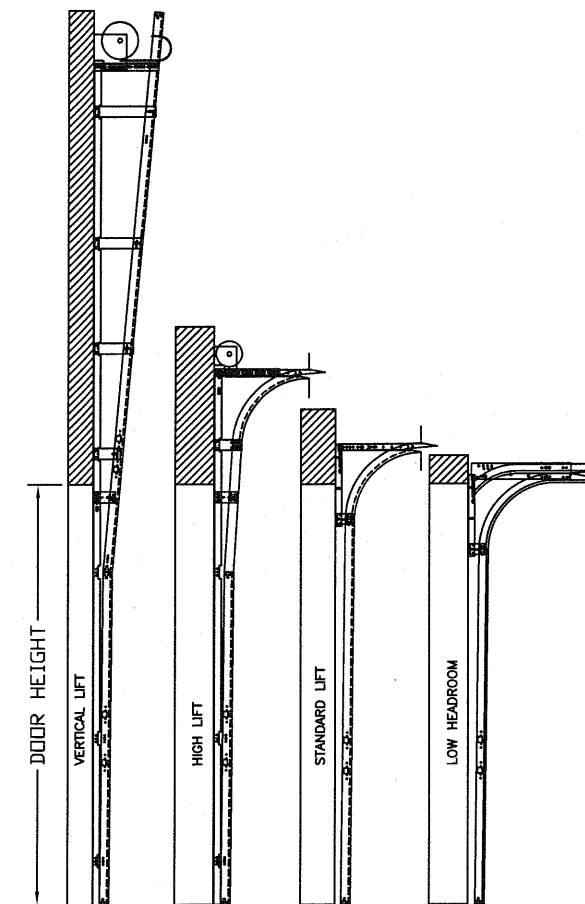
TABLE 1

Section	Panel Type	Center Stile Location (Measured from Left Edge)	
		1st (in)	2nd (in)
6'0"	Short	24.406	47.594
6'0"	Oak Summit	24.644	47.357
7'0"	Short	29.200	54.800
7'0"	Oak Summit	29.144	54.857
7'2"	Short	30.200	55.800
7'2"	Oak Summit	29.894	56.107
7'4"	Short	31.200	56.800
7'4"	Oak Summit	30.644	57.357
7'6"	Short	32.200	57.800
7'6"	Long	45.000	
7'6"	Oak Summit	45.000	
7'8"	Short	32.200	60.000
7'8"	Long	46.000	
7'8"	Oak Summit	46.000	
7'10"	Short	33.000	61.000
7'10"	Long	47.000	
7'10"	Oak Summit	47.000	
8'0"	Short	48.000	
8'0"	Long	48.000	
8'0"	Oak Summit	48.000	
8'2"	Short	49.000	
8'2"	Long	49.000	
8'2"	Oak Summit	49.000	
8'4"	Short	50.000	
8'4"	Long	50.000	
8'4"	Oak Summit	50.000	
8'6"	Short	51.000	
8'6"	Long	51.000	
8'6"	Oak Summit	51.000	
8'8"	Short	52.000	
8'8"	Long	52.000	
8'8"	Oak Summit	52.000	
8'10"	Short	53.000	
8'10"	Long	53.000	
8'10"	Oak Summit	53.000	
9'0"	Short	54.000	
9'0"	Long	54.000	
9'0"	Oak Summit	54.000	

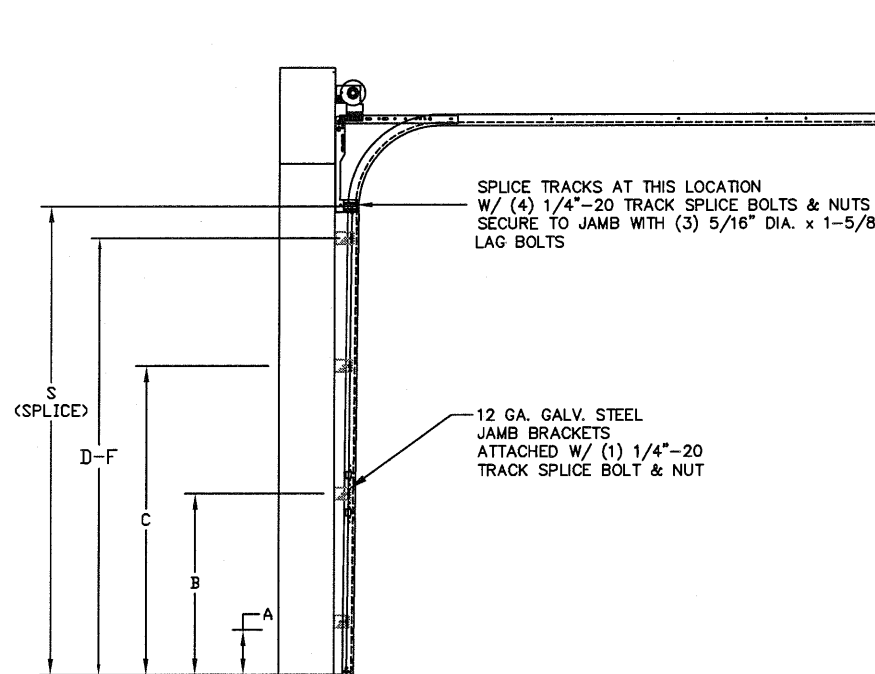
TABLE 2

DOOR HEIGHT	TRACK ATTACHMENT								SPLICE
	A	B	C	D	E	F	G	H	
6'6"	3.5"	21"	42"	63"					70"
7'	3.5"	21"	42"	63"					76"
7'6"	3.5"	21"	42"	63"					82"
8'	3.5"	21"	42"	63"					88"
8'6"	3.5"	21"	42"	63"	84"				94"
9'	3.5"	21"	42"	63"	84"				100"
9'6"	3.5"	21"	42"	63"	84"				106"
10'	3.5"	21"	42"	63"	84"	105"			112"
10'6"	3.5"	21"	42"	63"	84"	105"			118"
11'	3.5"	21"	42"	63"	84"	105"			124"
11'6"	3.5"	21"	42"	63"	84"	105"			130"
12'	3.5"	21"	42"	63"	84"	105"	126"		136"
12'6"	3.5"	21"	42"	63"	84"	105"	126"		142"
13'	3.5"	21"	42"	63"	84"	105"	126"	147"	154"
13'6"	3.5"	21"	42"	63"	84"	105"	126"	147"	154"
14'	3.5"	21"	42"	63"	84"	105"	126"	147"	160"

ALL TRACK ATTACHMENT SPACING +/-2" ALLOWED WITH SYP OR SPF NO. 2 OR BETTER ONLY



AVAILABLE TRACK CONFIGURATIONS
N.T.S.



TRACK CONFIGURATION FOR 6'6" UP TO 14' TALL DOORS (SEE TABLE 2)
N.T.S.

REV	DESCRIPTIONS OF REVISIONS	DATE	BY

MAX SIZE
9' x 14'

DESIGN LOADS
+26.7 PSF
-30.7 PSF

TEST LOADS
+40.1 PSF
-46.1 PSF

LARGE MISSILE IMPACT
RESISTANCE

Thomas L. Shelmerdine, PE (TX PE #85829)
Structural Solutions, PA (TX Firm #F-004063)

TX

ENTRE//MATIC

165 CARRIAGE COURT WINSTON-SALEM, N.C. 27105

MODEL #1500 STRATFORD 3000
MODEL #1200 HERITAGE 3000
MODEL #1550 OAK SUMMIT 3000
SHORT, LONG, FLUSH & OAK SUMMIT PANELS

SIZE	DRAWN BY	RLR	DATE	10/16/14	DRAWING NUMBER
B	CHECKED BY		DATE		IRC-1509-130-15-1

SHEET 3 OF 3

5921-G W. Friendly Ave., Greensboro, NC 27410